



# *City of Fairfax* *Emergency Management*



Evacuation Plan



**Table of Contents**

I. Introduction ..... 3

    A. Purpose..... 3

    B. Scope..... 3

    C. References ..... 3

II. Situation and Assumptions..... 4

    A. Situation ..... 4

    B. Assumptions ..... 4

III. Notifications and Activation..... 5

IV. Command and Control ..... 6

    A. Concept of Operations ..... 6

V. Financial Management..... 11

    A. General ..... 11

    B. Documentation of Costs ..... 11

VI. Roles and Responsibilities..... 11

    A. Police Department..... 11

    B. Fire Department ..... 11

    C. Department of Public Works ..... 12

    D. Department of Parks and Recreation ..... 12

    E. Emergency Management Coordinator/Office of Emergency Management ..... 12

    F. Fairfax County Health Department..... 12

    G. American Red Cross ..... 12

    H. EOC ..... 12

    I. Community Relations/Joint Information Center..... 13

VII. After-Action Review and Corrective Actions ..... 13

    A. Training and Exercises ..... 13

VIII. Maintenance ..... 13

Appendix A: Area Maps..... 15



## **I. Introduction**

### **A. Purpose**

The purpose of this plan is to provide operational guidelines for conducting evacuations of residents and businesses within the vicinity of the City of Fairfax Pickett Road Tank Farm (Tank Farm), in the event that there is an imminent danger to life or property caused by a fire, explosion or fuel spill. This plan identifies specific roles and responsibilities of City departments and organizations in conducting evacuations and addresses the processes for obtaining additional resources needed to support evacuation operations.

### **B. Scope**

This plan applies specifically to incidents or potential incidents at the Pickett Road Tank Farm within the City of Fairfax, which may impact portions of Fairfax County. While an incident at the Tank Farm may require a hazardous material response, this plan focuses exclusively on the evacuation related activities and not the technical response.

For the purposes of this plan, evacuation is defined as “*the movement of persons from a dangerous place due to the threat or occurrence of a disaster or emergency incident.*” This document addresses “off-site” evacuations only, as the City of Fairfax Fire Department (FD) maintains a separate plan for on-site evacuations at the Tank Farm itself.

This plan applies specifically to evacuation operations due to an actual or potential significant disaster or emergency. It is applicable to all City departments and organizations with emergency response responsibilities under the City of Fairfax Comprehensive Emergency Management Plan (CEMP), and augments the additional operational plans and procedures as identified in Section IV.A below.

### **C. References**

1. City of Fairfax CEMP (2009).
2. City of Fairfax Emergency Operations Center (EOP) Guide (2009).
3. City of Fairfax Joint Information Center (JIC) Standard Operating Procedures (need date).
4. City of Fairfax Hazardous Material Emergency Response Plan (need date).
5. City of Fairfax Police Department General Order: Contingency/All Hazard Plan (February 2010).
6. City of Fairfax Emergency Communications Center (ECC) Standard Operating Procedures (need to confirm title and date).
7. Northern Virginia Law Enforcement Mutual Aid Agreement (2002).



## **II. Situation and Assumptions**

### **A. Situation**

The Pickett Road Tank Farm is a 90 acre industrial site located off Pickett Road on the eastern border of the City of Fairfax. The tank farm stores nearly 1 million gallons of petroleum and five companies – British Petroleum, CITGO, Motiva, TransMontaigne, and Colonial Pipeline -- own property and operate their respective facilities at the site. Historically, there have been a series of fuel leaks and traffic accidents involving 18-wheeler tanker trucks that transport fuel in and out of the tank farm, initiating the development of this plan.

The Tank Farm is bordered to the north by the Army/Navy Country Club and is adjacent to several highly populated neighborhoods and several shopping centers. A significant spill or leak may warrant an evacuation of residents and businesses. Three maps are located in Appendix A, highlighting the proximity of the Tank Farm to these special areas of interest.

### **B. Assumptions**

- The planning assumptions stated in the City’s CEMP also apply to this plan.
- City departments and organizations will carry out their assigned emergency response responsibilities assigned by the CEMP as needed to meet operational requirements.
- Most evacuees will seek shelter with friends or relatives and many residents will remain with or near their homes.
- The majority of residents will follow emergency instructions and only evacuate after receiving evacuation instructions from City officials.
- Although advance notice to prepare for an evacuation (e.g. threat of an explosion or fuel release) is possible, most evacuation scenarios involving the Pickett Road Tank Farm will provide little or no advance notice.
- The primary means of transportation for the movement of evacuees will be by privately owned and operated motor vehicles. However transportation may need to be provided for evacuees without personal vehicles.
- In the event an assembly area or shelter is required to support evacuees, the facility(ies) selected will be located a safe distance from the incident to preclude the need to be re-evacuated.
- Local media will cooperate with City officials in disseminating warning and emergency public information during emergency situations.
- During an evacuation, roadways may become impassable due to the volume of vehicular traffic. In such cases, buses may be used to facilitate transportation. Rush hour traffic conditions will further complicate the situation.



- Significant protective actions, if implemented by the City may also be appropriate to portions of Fairfax County within close proximity of the facility (e.g., Mantua neighborhood). Close coordination and timely information sharing will be especially important to carry out a successful protective action.

### **III. Notifications and Activation**

- The Police Dispatch serves as the local warning point (LWP) and provides the City with a single point to disseminate information and warnings to City officials that a hazardous situation could threaten the general welfare, health, safety, and/or property of the City's population.
- The Police Dispatch may receive warnings of actual or potential emergency situations from a variety of sources including county, state and federal agencies, local officials, businesses, industry and the general public. The Police Dispatch is equipped with multiple communication networks composed of federal, state, regional, and local emergency systems.
- The Police Dispatch may also receive warnings through the Public Safety and Transportation Operations Center (PSTOC) in Fairfax County. The PSTOC includes the Fairfax County Department of Public Safety Communications (DPSC) which supports all of Fairfax County to include the City of Fairfax. This DPSC has the capability to transfer 911 calls that apply to City agencies to the Police Dispatch.
- City officials may become aware of an incident or potential incident at the Pickett Road Tank Farm through a variety of channels. Generally, the Police Dispatch will be notified by on-scene facility managers. The ECC will notify the Police on-duty supervisor, the on-duty Fire Department (FD) official, the Emergency Management Coordinator (EMC), the Community Relations Office, the Department of Public Works and Utilities in accordance with the Police Dispatch established operating procedures and protocols. The on-duty FD official will determine the need for additional notifications based upon the incident reported.
- Since an incident or potential incident may affect portions of Fairfax County and the Mantua neighborhood in particular, the EMC will ensure that Fairfax County is notified of the incident through the county's PSTOC.
- In the event of a traffic incident near the facility involving a tanker, the police officer(s) responding on-scene may be the point for initial notification to the Police Dispatch. In this case the on-scene officer will follow Police Department (PD) procedures in conducting additional notifications.
- This plan will be activated by the on-scene incident commander (IC) or the EMC once it is determined that evacuations may be necessary.
- Based upon the nature of the incident the City may activate its Emergency Operations Center (EOC) and/or Joint Information Center (JIC) to support on-scene operations.



- Notification information can be found in the City of Fairfax Emergency Contact List at Police Dispatch or the EOC. The PD, in coordination with the EMC, will conduct notification tests on a semi-annual basis to ensure notification and protocols are up-to-date.

#### **IV. Command and Control**

The senior police official on-scene will be in charge of evacuation operations and may request resources and other support through his/her department or through existing mutual aid agreements with neighboring jurisdictions. Generally, the senior PD official will be a part of a Unified Command (UC) at the incident command post (ICP). Under some circumstances, the senior police official may be the incident commander (IC). Based upon the actual or potential scope of operations the senior police official may request activation of the City's EOC and JIC through the EMC. The EOC and JIC will provide support to the on-scene operations.

##### **A. Concept of Operations**

- The Incident Command System (ICS) will be utilized to manage evacuations. ICS is an emergency management system designed to enable effective and efficient management of incidents by integrating a combination of facilities, equipment, personnel, procedures, and communications operating within a common organizational structure (See City of Fairfax Police Department General Order: Contingency/All Hazard Plan [February 2010] for further information on ICS).
- The responding City department will establish on-scene command. Generally, incidents at the Pickett Road Tank Farm will be the responsibility of the FD (e.g. hazardous materials spill) but there may be instances where the Police will be the lead (traffic accident). The senior fire and/or police supervisor on-scene will establish incident command and designate an ICP in order to manage the emergency.
- The ICP will be established within close proximity of the incident but outside of the area that may be impacted. The ICP will have telephone and two way radio communications capability. If possible, the ICP should have access to electrical connections and telephone lines. The ICP should be readily accessible by authorized vehicles and have adequate space for parking.
- Depending upon the magnitude of the incident a UC including the FD and PD will be established to direct and control the evacuation and to coordinate notification to affected residents and businesses.
- The PD will mobilize resources and conduct operations in accordance with the City of Fairfax Police Department Contingency/All Hazards Plan. Additional law enforcement resources may be requested through the Northern Virginia Law Enforcement Mutual Aid Agreement in accordance with PD protocols and procedures.



- Portions of the Mantua neighborhood west of Pickett Road may be threatened or affected by the incident. Since this neighborhood is located within Fairfax County, the IC will invite the county to provide a liaison officer to the ICP to facilitate the exchange of information and advise the IC of current or potential inter-jurisdictional issues or concerns. Note: Fairfax County will be responsible for implementing protective actions such as evacuations as appropriate for the Mantua neighborhood. Close coordination is necessary to ensure all residents at risk receive clear, consistent information and take the necessary protective actions.
  
- As part of the initial response, the PD will take action to close Pickett Road to through traffic. Barricades will be erected at Pickett Road and Route 236 indicating no through traffic and a police officer stationed at Pickett Road and Mathy Drive to assure that no one other than first responders proceed past this point northbound on Pickett Road. Southbound traffic on Pickett Road will be closed to through traffic with a barricade erected at Pickett Road and Route 237, with an officer stationed on Pickett Road at the City Property Yard to assure only authorized personnel proceed past this point. Additional detours will be established as necessary.
  
- The Incident Commander (IC) will make the determination if an evacuation is necessary and establish the zones around the Tank Farm to be evacuated. The key factor in ordering an evacuation will be the immediate threat to public health and safety. Zones within close proximity of the Tank Farm that may need to be evacuated include:
  1. Comstock Development – evacuation route will be Route 236 W (See Comstock Development map in Appendix A for evacuation phases).
  2. Barrister’s Keep – evacuation route will be Pickett Road (Route 237) N to Route 50.
  3. Army/Navy Country Club – evacuation route will be Old Lee Highway. Note: the Army/Navy Country Club has an internal system in place for providing emergency information to patrons. The lead PD official will notify Club management if evacuation is necessary.
  4. Lyndhurst Apartments – evacuation route will be Route 236 W.
  5. Little River Hills Development – evacuation route will be Route 236 W.
  6. Fairfax City Mall Shopping Center (Intersection of Pickett Road and Route 236) – evacuation route will be Route 236 E/W.
  7. Pickett Shopping Center - evacuation route will be Route 236 E/W.
  8. Turnpike Shopping Center (9520 Main Street) – evacuation route will be Route 236 E/W.
  9. Pickett’s Reserve Development – evacuation route will be Pickett Road (Route 237) N to Route 50.
  10. Fairfax Ice Arena (3779 Pickett Road) – evacuation route will be Pickett Road N to Route 50.
  11. Fairfax Post Office (3601 Pickett Road) – evacuation route will be Pickett Road N to Route 50.
  12. Commercial developments on the west side of Pickett Road – evacuation route will be Pickett Road N/S to Route 50/Route 236.
  13. Mantua Development (Fairfax County) – Fairfax County will determine evacuation routes.



- Based upon the specifics of the incident, the IC may determine that sheltering-in-place is the best option for protecting the public during the initial operations. In this case, the PD will need to assist in providing shelter-in-place information to residents and businesses. The procedures identified below for notifying residents of evacuations will be used by to disseminate the shelter-in-place information. Note: the IC, supported by the Fairfax County Department of Health as necessary will develop the shelter-in-place information.
- Once it is determined that an evacuation is necessary the PD will be the lead for implementing the evacuation. Other City departments will provide support as outlined in this document and in accordance with their assigned roles and responsibilities under the City's CEMP. The senior PD official on-scene will be in command.
- The following actions will be taken by the senior PD official in implementing evacuations:
  1. Based upon the scope of the evacuation request, activation of the City EOC and/or Joint Information Center (JIC) to provide support. The EOC will provide support in such areas as communications, alert, warning, transportation, protective actions, mass care and any other resources as required.
  2. Develop information that will be disseminated to residents and businesses. Alert Community Relations through the EMC/EOC to provide support in distributing information through the media and City website. Note: For a slow developing situation, advance warning will be given to affected residents. Advance notices will be distributed through the media and other systems available to the City and will address preparedness actions such as securing property, assembling emergency supplies, fueling vehicles, identifying evacuation routes and providing assembly areas and/or shelter locations as applicable.
  3. Contact Fairfax County through the PSTOC if the Mantua neighborhood is identified as a zone at-risk to advise the County of the situation.
  4. Determine if an assembly area and/or temporary shelter(s) will be needed and initiate appropriate actions. If the incident is expected to last 8 hours or less, an assembly area will be designated for evacuating residents. The primary assembly area for the City is the Stacy C. Sherwood Community Center located at 3740 Old Lee Highway. Ensure that the Department of Parks and Recreation is notified though the EMC/EOC to establish the assembly area.
  5. If the incident is expected to last more than 8 hours contact the EMC/EOC to request that one of more temporary shelters is established.
  6. Determine if additional traffic control points may be necessary to expedite evacuations (e.g. if Comstock is to be evacuated a traffic control point may be needed at Bradwater Street and Route 236). Assign officers as necessary. Request support from Department of Public Works (PW) as needed (e.g. barricades).





7. Establish priorities for zones to be notified and assign officers (minimum of 2 per zone) as applicable to enter the neighborhoods/shopping centers to alert residents/businesses to evacuate.
  8. If identified within the evacuation zone, contact the following organizations (See City of Fairfax Emergency Contact List maintained by OEM for contact information) to advise them of the situation and appropriate protective actions. Note: The Fairfax Ice Arena, Army/Navy Golf Club, the Fairfax Post Office and the Church of the Apostles will notify their patrons as appropriate to evacuate their premises.
    - a. Fairfax City Mall Shopping Center.
    - b. Pickett Shopping Center.
    - c. Turnpike Shopping Center
    - d. Army/Navy Golf Club.
    - e. Fairfax Ice Arena.
    - f. Fairfax Post Office.
    - g. Church of the Apostles.
- Alert Public Works (PW) to provide CUE buses for transportation of affected residents. Note: transportation will be to the designated assembly area or shelter as applicable to the situation. Advise PW to designate pickup points for each zone and provide that information to the ICP.
  - Alert the FD to provide transportation support for those with medical needs. Note: Contact the EMC/EOC to initiate coordination with the Fairfax County Department of Family Services to make provisions for those with medical needs.
  - Establish procedures for ensuring the security of zones to be evacuated. Security of evacuated areas is extremely important. Those who have evacuated may not do so in the future if their property has been damaged or stolen during their absence. Establish access control points to limit entry into evacuated areas and conduct periodic patrols.
  - The following procedures will be used for notifying residents in each neighborhood:
    - a. Officers assigned to the neighborhood will position themselves to cover the area.
    - b. When positioned, the officers will activate the sirens on their cruisers to draw the residents' attention. This will be done simultaneously by both officers for twenty (20) second duration. In the event of a large fuel spill, cruisers will not be utilized due to the possibility of vapor ignition. Officers will proceed to going from door-to-door.
    - c. After the sirens have been activated, officers will use the public address (PA) system making an announcement to vacate the development and assemble at the Stacy C. Sherwood Community Center. A minimum of three (3) announcements will be made in each area.
    - d. Once the announcements have been made, officers will begin a door-to-door check to assure that all residents received the message to evacuate. An interval of five (5) minutes should elapse prior to the door-to-door checks to allow residents to leave on their own. If residents need assistance in evacuating the officers will



contact the ICP to request appropriate support (e.g. transportation, medical assistance). Persons who refuse to evacuate will be left until all others have been warned and then, time permitting, further efforts may be made to persuade these individuals to leave.

- e. When it is determined that the neighborhood is cleared, officers will be assigned at the entrances/exits to prevent persons other than police, fire and rescue personnel from entering and to prevent looting. Officers will remain at their assigned location until relieved.
  - f. The Comstock neighborhood is considered to be the area most likely to be at high risk. This neighborhood has been identified into three priority zones as depicted on the Comstock Development map in Appendix A for purposes of notifying the residents.
- Police Officers will be assigned as appropriate to conduct notifications in the shopping centers at-risk (Fairfax City Mall, Pickett Road and Turnpike shopping centers as applicable) to ensure businesses and shoppers are notified. Note: shoppers will be advised to return to their residences rather than to the assembly area. Officers will also need to be assigned (as applicable) to notify the businesses along the west side of Pickett Road.
  - The major resource requirements for evacuations will be for law enforcement personnel and equipment to support traffic management, operate access control points and provide security. Additional law enforcement resources may be requested through the Northern Virginia Law Enforcement Mutual Aid Agreement by the senior PD official in accordance with PD protocols and procedures. Support from other City departments and agencies may be requested through the EMC/EOC. The EMC may also request additional resources through the National Capital Region (NCR) Mutual Aid Agreement.
  - Providing clear and consistent information to the public will be a key component of evacuation operations. In addition to the notifications conducted by police officers within each of the zones, the City will use all available means to ensure the public is notified and provided updated information as the incident evolves. The senior police official will ensure that the on-scene public information officer (PIO) works with the Community Relations Office (or EOC if activated) to disseminate information through the City's website, e-MAS and the media. Depending upon the scope of the incident, the City's JIC will be activated to coordinate public information activities.
  - Once evacuation operations are underway, the senior police official will monitor operations and make adjustments as necessary. Police Officers conducting notifications within the zones to be evacuated may report issues to the ICP that will require follow-up actions.
  - The Reentry Annex to this plan provides a framework for planning and conducting reentry operations following an evacuation. The senior police official will initiate the development of the incident specific reentry plan as outlined in the Reentry Annex once the evacuation operations are underway.



## **V. Financial Management**

### **A. General**

The Code of City of Fairfax Section 2-358 and City of Fairfax Purchasing Procedures, Section 2, establishes policy and procedure to implement statutory authorities and responsibilities for financial management related to response activities. This policy ensures that funds are provided expeditiously and that financial operations are conducted in accordance with appropriate policies, regulations, and standards. Additional assistance on financial management issues may be requested by the on-scene command from the Office of Finance.

### **B. Documentation of Costs**

City departments that have an automated financial management system will utilize that system to capture the incurred costs of available and contracted resources used to support operations under this plan. Departments that do not have an automated financial management system will utilize their normal financial management procedures to capture and document incurred costs. All automated financial management systems that are used to document incurred costs must comply with applicable agency, state, and federal guidelines, rules, standards, and laws. This understanding is based on the knowledge that any reimbursement of incurred costs must be verifiable.

## **VI. Roles and Responsibilities**

A major evacuation operation may require support from a variety of City departments and other organizations. This section identifies the roles and responsibilities that the various departments and organizations may perform to support evacuations.

### **A. Police Department**

- Provide overall direction and management for evacuation operations.
- Establish and maintain traffic and access control points as needed to manage traffic and limit access to evacuated areas.
- Conduct on-scene notifications to affected residences and businesses.
- Request additional law enforcement resources as needed through the Northern Virginia Law Enforcement Mutual Aid Agreement and/or other applicable mutual aid agreements.
- Provide traffic management for evacuation operations.
- Coordinate law enforcement activities with other emergency services.
- Provide information to the PIO for news releases to the public on the evacuation routes, protocols and procedures.

### **B. Fire Department**

- Provide technical assistance as needed in evaluating conditions in the evacuated area to determine if evacuation or shelter-in-place is advisable (e.g. hazardous materials).
- Provide assistance as needed in transporting residents with medical issues that require special transportation.



**C. Department of Public Works**

- In coordination with the Police Department, assist in traffic control, road closures, and traffic-routing.
- Provide barricades and barriers to restrict entry to evacuated areas and other areas where entry must be controlled.
- Coordinate transportation for evacuees without vehicles or who need assistance in evacuating, determining and establishing pickup points if necessary.
- Provide information to the PIO on pickup points or special pickup routes for those who require transportation, so that this information may be provided to the public.

**D. Department of Parks and Recreation**

- As necessary, establish and operate an assembly area for evacuated residents at the Stacy C. Sherwood Community Center.

**E. Emergency Management Coordinator/Office of Emergency Management**

- Coordinate the establishment of one or more shelters as necessary in conjunction with the American Red Cross and Fairfax County.
- Provide support to the Department of Parks and Recreation in establishing and operating an assembly area at the Stacy C. Sherwood Community Center.
- Provide technical assistance and support to the on-scene command in obtaining additional resources through City departments and agencies or other sources prior to EOC activation.
- Activate the EOC and serve as the Emergency Management Team Leader. Manage EOC operations as outlined in the CEMP.
- Liaise with the Virginia Department of Emergency Management, Virginia Department of Transportation and other local jurisdictions, state and federal agencies as appropriate.

**F. Fairfax County Health Department**

- Issue health advisories in coordination with the Community Relation/JIC and the EMT.
- Provide recommendations on health hazards and protective measures.

**G. American Red Cross**

- Assists with opening and operating one or more shelters as necessary in accordance with American Red Cross policies.

**H. EOC**

- Coordinate the opening of one of more shelters as necessary with the ARC.
- Coordinate support to the on-scene evacuation operations through City departments and agencies.
- Coordinate the opening and operating of an assembly area as needed.
- Coordinate requests for resources from sources outside the City.
- Coordinate the development and dissemination of emergency information to the residents of the City (in conjunction with JIC if activated).



## **I. Community Relations/Joint Information Center**

- Monitor the media to determine the need to clarify evacuation/protective action issues and provide updated information to the public.
- Develop and implement a public information strategy in coordination with the IC/UC/EOC to ensure that the public receives timely, accurate and consistent information related to the evacuation.
- Schedule and conduct press briefings, interviews and press releases as appropriate.
- Monitor rumors and take action to correct or control them.
- Coordinate with the City and County EOCs to disseminate alerts and warnings.
- Utilize all available communication tools including public information releases, the cable television emergency message system, the electronic alert messaging system (eMAS), the City of Fairfax Web site, news conferences, local radio and television, and media releases to provide information to the public on protective actions and evacuations.
- Facilitate the process of developing a “common message” and communications strategy to ensure the consistency among City departments and other local jurisdictions involved in the incident (e.g. Fairfax County).

## **VII. After-Action Review and Corrective Actions**

After-action reviews are essential for identifying issues that impeded operations or innovative approaches that were introduced during the field operations that may be applicable to future incidents. Before issues can be addressed, they must be identified and documented.

The PD will facilitate an after-action review within 30 days of completing an evacuation operation under this plan. All City departments and agencies that provided support to PD during the operation will be invited to participate. The after-action review will be used to identify issues, concerns, and successes that need to be addressed or incorporated into existing plans and procedures. An after-action report will be produced within 60 days of the after-action review.

The after-action review process will be used to identify issues for corrective action. Corrective actions will be assigned through the Police Chief for review and resolution. Issues requiring resolution by other City departments or agencies will be coordinated through the Emergency Management Coordinator.

### **A. Training and Exercises**

Periodic training and exercises of this plan will help ensure an effective implementation in the event of a real world incident. Exercises of this plan will be scheduled and conducted as part of the Office of Emergency Management’s annual training and exercise program.

## **VIII. Maintenance**

The Office of Emergency Management is responsible for developing, maintaining and distributing the Pickett Road Tank Farm Evacuation Plan. The plan will be reviewed annually by the Emergency Management Coordinator and the City’s Police and Fire Chiefs or as required to address significant operational issues. The City of Fairfax Emergency Contact List will be reviewed and updated quarterly by the Office of Emergency Management.



Changes may include additions of new or supplementary material or deletions of outdated information or as a result of an after-action review that identifies changes needed in the plan. Notices of Change will be prepared and distributed by OEM and will include the effective date, the change number, subject, purpose, and action required by the departments and agencies. Upon publication, the change will be considered as part of the Plan.

Copies of this and Notices of Change will be distributed electronically to City departments and agencies with assigned roles and responsibilities within this plan.



## **Appendix A: Area Maps**



### City of Fairfax Pickett Road Tank Farm Evacuation Plan Areas of Interest & 1/2 Mile Buffer

The Pickett Road Tank Farm is a 90 acre industrial site that stores nearly 1 million gallons of petroleum. A series of fuel leaks and traffic accidents involving the transport of fuel in and out of the tank farm helped to initiate the development of this plan.

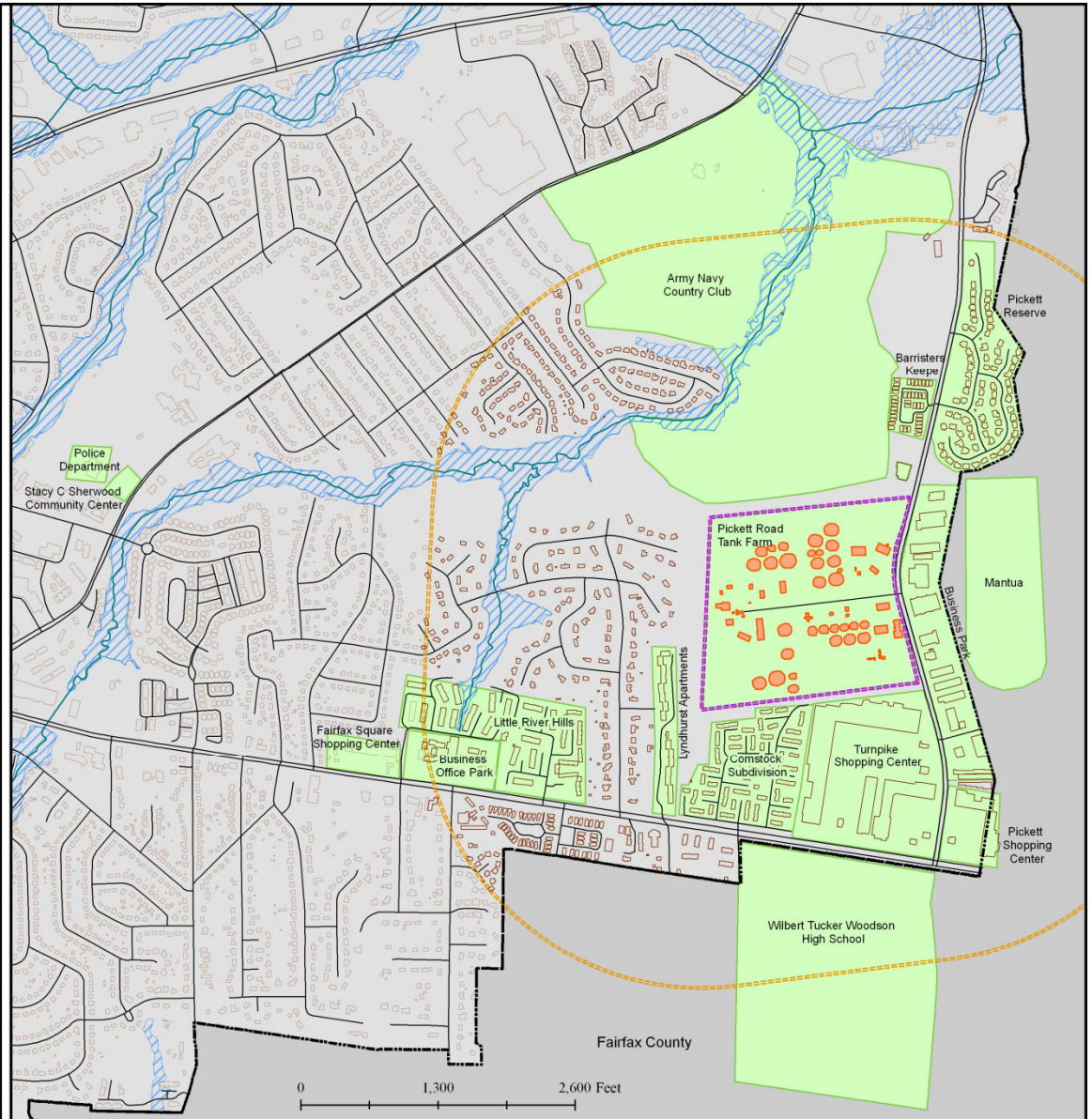
- Pickett Road Tank Farm
- 1/2 Mile Radius Buffer
- Tank Farm Building & Tank Footprints
- Areas of Interest
- Building Footprints
- Building Footprints within 1/2 mile of Tank Farm
- Street Centerlines
- FEMA Floodplain
- City of Fairfax

Data Sources: Boundaries, Roads, Building Footprints (City of Fairfax GIS), DFIRM (FEMA), Imagery (VGIN)

Coordinate System: Virginia State Plane North NAD 1983



Buildings located within 1/2 mile of Tank	
BUILDING TYPE	NUMBER OF BUILDINGS
APARTMENT	25
BANK	4
BUILDING	67
CAR DEALERSHIP	1
CHURCH	1
COMMERCIAL CONDO	12
DAY CARE	1
GARAGE	2
GAZEBO	2
ICE SKATING RINK	1
OFFICE BUILDING	11
POOL HOUSE	3
POST OFFICE	1
PUBLIC STORAGE	2
RESIDENTIAL CONDO	2
RESTAURANT	3
RETAIL	5
SHED	4
SINGLE FAMILY	446
TOWNHOUSE	43
<b>TOTAL</b>	<b>636</b>







**City of Fairfax Pickett Road Tank Farm Evacuation Plan  
Areas of Interest & 1/2 Mile Buffer**

The Pickett Road Tank Farm is a 90 acre industrial site that stores nearly 1 million gallons of petroleum. A series of fuel leaks and traffic accidents involving the transport of fuel in and out of the tank farm helped to initiate the development of this plan.

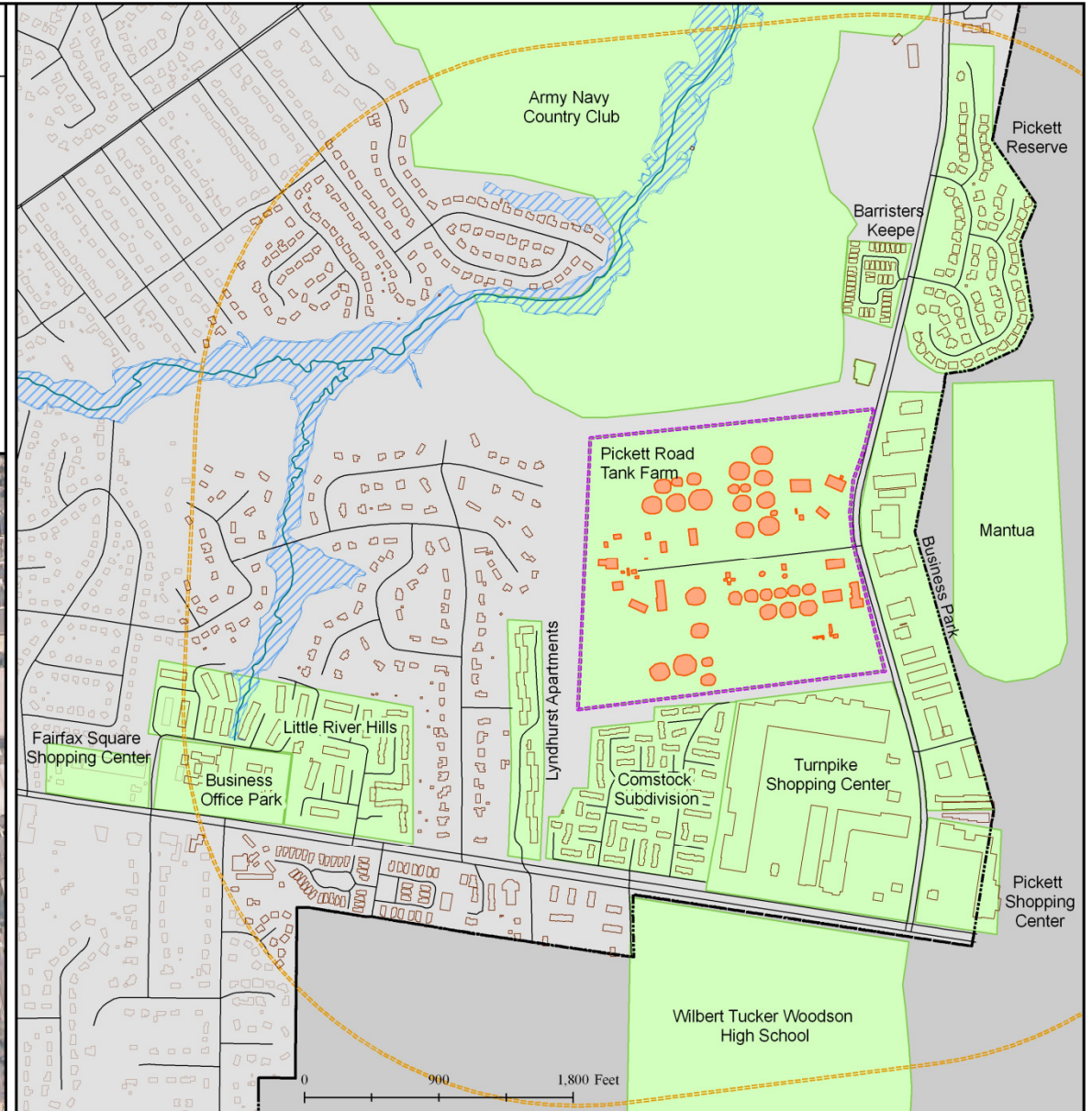
- Pickett Road Tank Farm
- 1/2 Mile Radius Buffer
- Tank Farm Building & Tank Footprints
- Areas of Interest
- Building Footprints
- Building Footprints within 1/2 mile of Tank Farm
- Street Centerlines
- FEMA Floodplain
- City of Fairfax

Data Sources: Boundaries, Roads, Building Footprints (City of Fairfax GIS), DFIRM (FEMA), Imagery (VGIN)

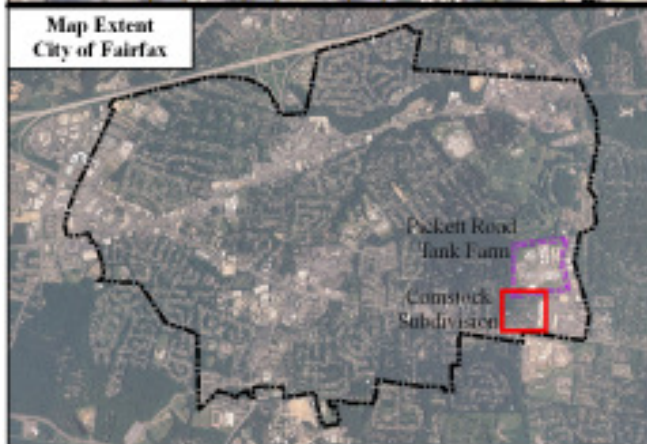
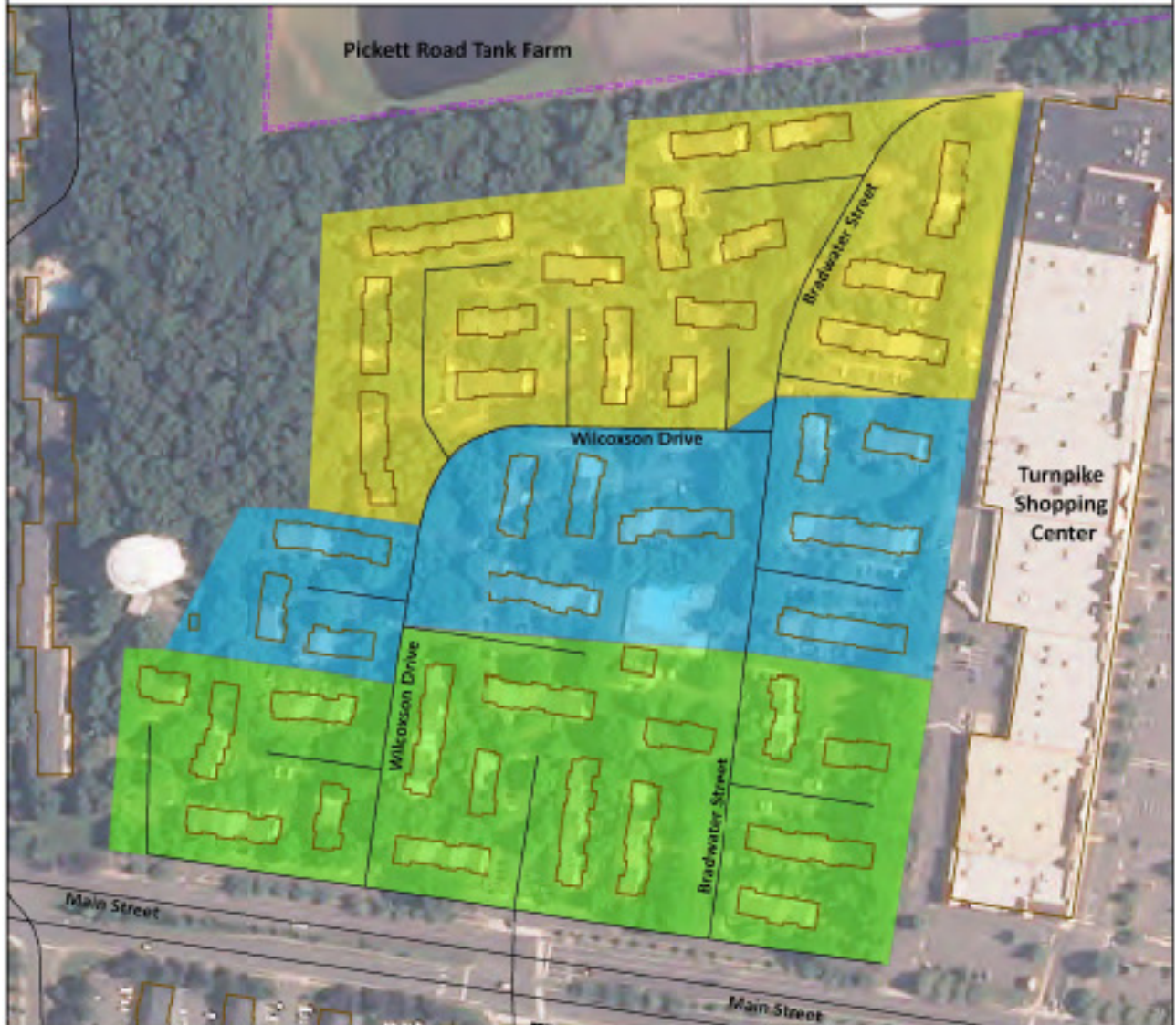
Coordinate System: Virginia State Plane North NAD 1983



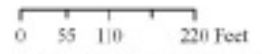
Buildings located within 1/2 mile of Tank	
BUILDING TYPE	NUMBER OF BUILDINGS
APARTMENT	25
BANK	4
BUILDING	67
CAR DEALERSHIP	1
CHURCH	1
COMMERCIAL CONDO	12
DAY CARE	1
GARAGE	2
GAZEBO	2
ICE SKATING RINK	1
OFFICE BUILDING	11
POOL HOUSE	3
POST OFFICE	1
PUBLIC STORAGE	2
RESIDENTIAL CONDO	2
RESTAURANT	3
RETAIL	5
SHED	4
SINGLE FAMILY	446
TOWNHOUSE	43
<b>TOTAL</b>	<b>636</b>



## City of Fairfax Pickett Road Tank Farm Evacuation Plan Evacuation Priorities Comstock Subdivision



- Legend**
- Evacuation Priority
    - Priority #1
    - Priority #2
    - Priority #3
  - Pickett Road Tank Farm
  - Street Centerlines
  - Building Footprints
  - City of Fairfax Boundary



Coordinate System: Virginia State Plane North NAD 1983  
Data Sources: Boundaries, Roads, Building Footprints (City of Fairfax GIS), Imagery (VGIN)