

NOTES:

-This streetscape elevation, material and color selection shows the intent, character, and quality of the proposed development. Architectural plans, elevations, and illustrations may be adjusted or modified subsequent to BAR approval as a result of final architectural and engineering design, provided they remain in conformance with that is shown in this package, and shall be approved at the discretion of the Planning Director. Final manufacturer and material selection may deviate, provided they remain in conformance with the intent and character shown in this package

-Azek capped polymer decking materials in Coastline
-Wapolo Jamestown Porch Railing, Extra White Pickets on porches with Iron Ore railing

-CertainTeed Grand Manor asphalt shingles in Black Pearl
-Snow guards in Slate Gray
-5" Gutters in Classical White

-JamesHardie Beaded Cedarmill lap siding in Autumn Tan
-Marvin Insert Double Hung windows in Classical White
-Marvin Flat Casing in Classical White
-Timberland Western Red Cedar operable shutters in Roycroft Copper Red



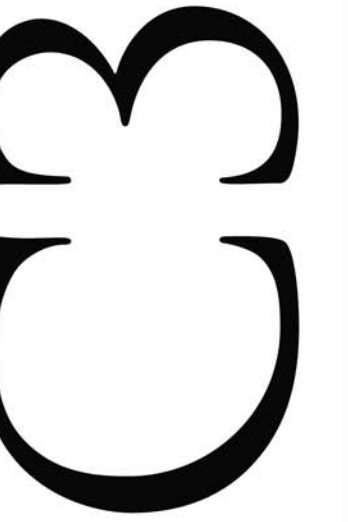
-Walpole Traditional Board Fence in white for TY1 along perimeter
-TY1 understory trees: Eastern Redbud, Koua Dogwood, Star Magnolia (as shown on landscaping plan)
-Canopy trees: Willow Oak (as shown on landscaping plan)

-ThermaTru Classic-Craft Maerican Style Collection 6 Panel Shaker front door in Roycroft Copper Red
-Marvin Swinging French Door in Classical White
-Carriage Style insulated garage door in Classical White
-Walpole Savannah Side Mount Lantern for front doors and garage
-Cashwa Brick Chimney

-Cashwa Brick Facade Wall and Columns in Traditional Red
-Cashwa Brick in Traditional Red along building foundation
-Montage Plus Metal fence in Black
-Precast architectural concrete topper for columns, or Walpole Savannah Lantern (to match building mounted lighting)

WEST DRIVE - STREETSCAPE

C3 Studio LLC
312 Gay Street · #200
Knoxville · TN 37902
865-200-4065
www.C3StudioLLC.com



WEST DRIVE

FAIRFAX, VA