



City of Fairfax

SmartScale Application
Country Club Commons Connector Trail
Project Area

0 0.125 0.25 0.5 Miles



Legend

Country Club Commons Connector Trail (proposed alignment)

Bicycle Routes

- On-Street Bicycle Route
- Existing Off-Street Trails
- Planned Off-Street Trails

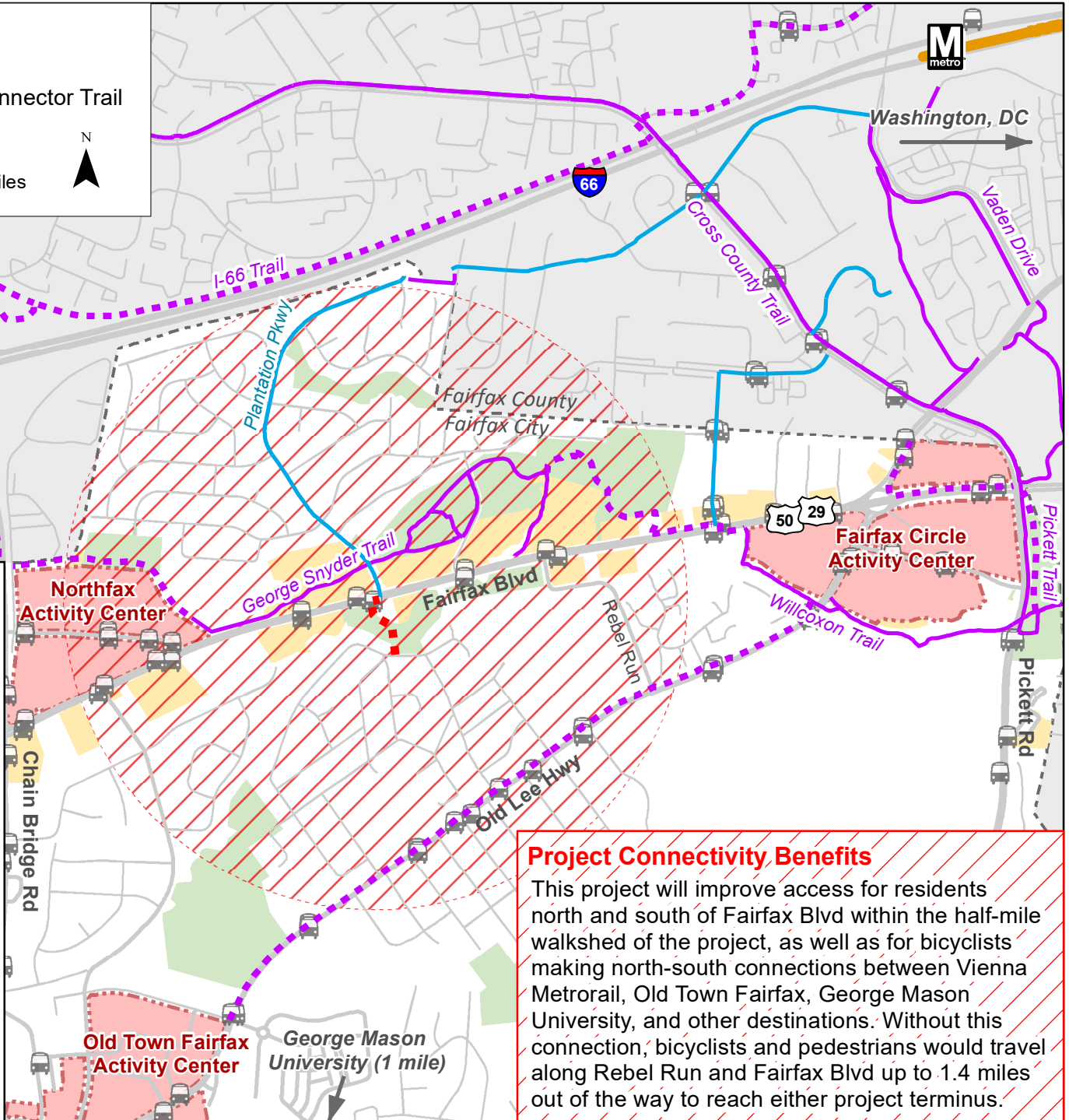
Metro Station

Bus Stop

City of Fairfax Activity Center

Other Commercial Areas

Half-Mile Walkshed from Project



Project Connectivity Benefits

This project will improve access for residents north and south of Fairfax Blvd within the half-mile walkshed of the project, as well as for bicyclists making north-south connections between Vienna Metrorail, Old Town Fairfax, George Mason University, and other destinations. Without this connection, bicyclists and pedestrians would travel along Rebel Run and Fairfax Blvd up to 1.4 miles out of the way to reach either project terminus.