



Bull Run

Sediment TMDL Action Plan

PERMIT NUMBER VAR040064

Submitted to DEQ:

Approved 2016

Updated - June 2020

INTRODUCTION

The City of Fairfax has updated this Bull Run Benthic (Sediment) TMDL Action Plan to address the Special Condition for approved local TMDLs (Part II.B) in the City's MS4 Permit. The City's approach for updates to this Action Plan is based on the requirements listed in the current MS4 General Permit and DEQ's Draft Local TMDL Action Plan Guidance Document released on November 21, 2016. Each of the sections in this Action Plan will address one or more of the required action plan content items as listed on pages 6-8 of DEQ's Draft Local TMDL Action Plan Guidance Document.

TMDL BACKGROUND INFORMATION

1. ***The name(s) of the Final TMDL report(s);***
2. ***The pollutant(s) causing the impairment(s);***
3. ***The WLA(s) assigned to the MS4 as aggregate or individual WLAs.***

[This section of the Action Plan directly addresses Part II.B.3.a-c of the MS4 Permit and DEQ Guidance Document Action Plan Content Items 1-3]

The City of Fairfax was assigned an aggregated Waste Load Allocation (WLA) under the approved TMDL report entitled *Benthic TMDL Development for Bull Run, Virginia, dated June 2006*. The impaired segment of Bull Run (Segment ID: VAN-A23R-01) is 4.8 miles in length extending from the confluence of Cub Run with Bull Run and continuing downstream to the confluence of Popes Head Creek with Bull Run. The segment is listed as impaired on Virginia's Section 303(d) Total Maximum Daily Load Priority List and Report due to water quality violations of the general standard (listed as a benthic impairment). Analyses of physical, chemical, biological, and observational data indicated that sediment was the most probable cause of the benthic impairments in the stream segment. A TMDL was therefore developed for sediment to address the benthic impairments in Bull Run. The City of Fairfax (VAR040064) and the Virginia Department of Transportation (VDOT) Urban Area (VAR040062) MS4s were assigned an aggregated WLA in the Final TMDL report as follows:

- Bull Run TMDL Sediment WLA = 14.2 Metric Tons/Year or 31305.60 lbs./year

The City does not drain directly to Bull Run, but rather Popes Head Creek which discharges at its confluence with Bull Run. The City's MS4 Boundary and 0.54 square mile contributing drainage area to Popes Head Creek (and ultimately Bull Run), as well as the location of the impaired reach in comparison to the City, is shown in Figure 1. The remainder of this Action Plan will focus on addressing the City's plan for complying with the WLAs assigned to the City under this TMDL.

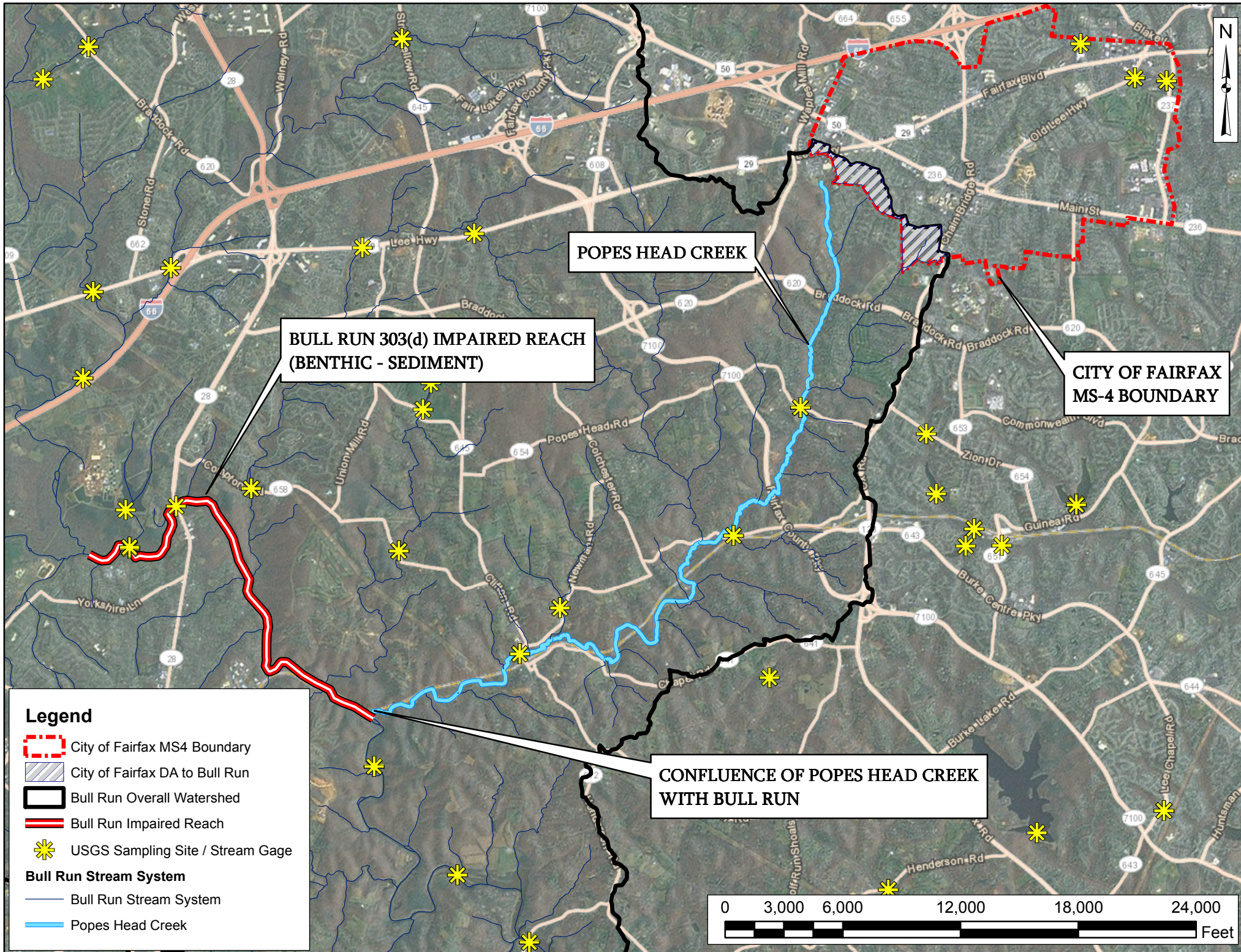


FIGURE 1: CITY OF FAIRFAX CONTRIBUTING DRAINAGE AREA (DA) TO BULL RUN

SIGNIFICANT SOURCES OF POC(S)

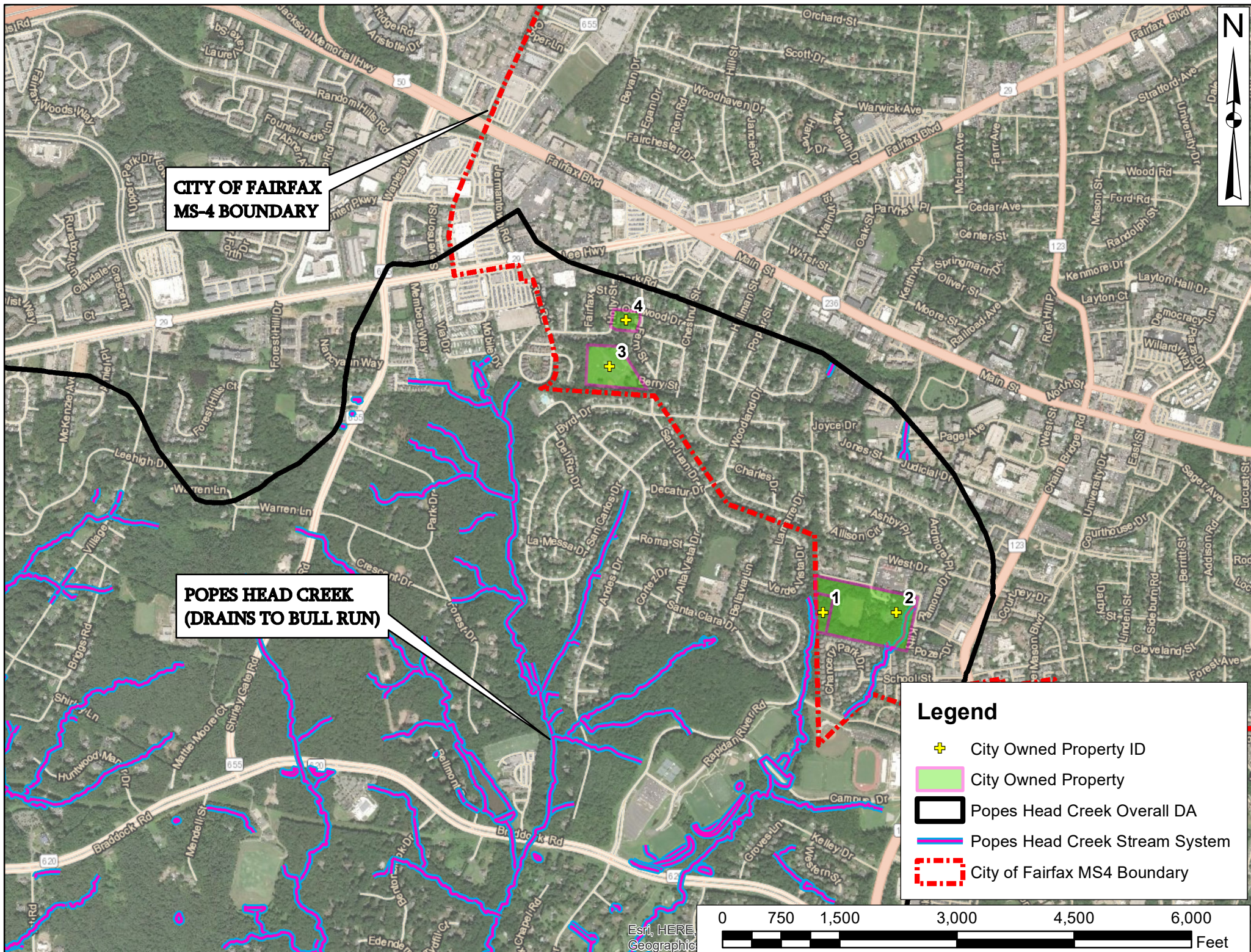
4. **Identification of significant sources of POC(s) from facilities of concern owned or operated by the MS4 operator that are not covered under a separate VPDES permit. A significant source of pollutant(s) from a facility of concern means a discharge where the expected pollutant loading is greater than the average pollutant loading for the land use identified in the TMDL.**
[This section of the Action Plan directly addresses Part II.B.3.d of the MS4 Permit and DEQ Guidance Document Action Plan Content Item 4]

A Geographic Information System (GIS) based evaluation was performed to confirm all City-owned/operated properties that ultimately drain to the Bull Run watershed. Utilizing the best available GIS shapefile data including parcel boundaries and current/historical activity descriptions, four (4) City-owned/operated properties were identified in the Bull Run watershed. The results of the initial evaluation are documented in Table 1, and each property's respective location within the City is shown in Figure 2.

Table 1. City-owned/operated properties in the Bull Run Watershed.

GIS ID*	Name	Facility Type	Area (Ac)
1	Jester Property	Park	2.0
2	Providence Park	Park	20.0
3	Westmore Elementary School Parcel	Vacant Lot	10.0
4	Westmore Park	Park	1.0

*** See Figure 2 for corresponding identifier**



**CITY OF FAIRFAX
MS-4 BOUNDARY**

**POPES HEAD CREEK
(DRAINS TO BULL RUN)**

Legend

- + City Owned Property ID
- City Owned Property
- Popes Head Creek Overall DA
- Popes Head Creek Stream System
- City of Fairfax MS4 Boundary

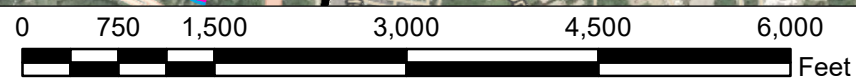


FIGURE 2: CITY OF FAIRFAX MS4 OWNED/OPERATED FACILITIES IN THE POPES HEAD CREEK/BULL RUN WATERSHED

Once the City-owned/operated properties were identified, a desktop based Pollutant of Concern (POC) source evaluation was performed utilizing each parcel's land use type, acreage, presence or absence of MS4 outfall(s), current activity descriptions, and site proximity to waters that drain to Bull Run. Large parks with on-site operational activities were weighted higher in this analysis due to the increased occurrence of material (i.e. aggregate) application and stockpiling, as well as nutrient application practices. One (1) site met the characteristics listed above, as well as displayed features visible in the City's aerial imagery that would indicate the increased potential for higher sediment loading. Providence Park was classified as having the potential for an expected pollutant loading greater than the average pollutant loading for the land use identified in the TMDL.

After the initial desktop analysis was completed, an on-site field reconnaissance was performed to review and assess the on-the-ground conditions for Providence Park. The site was visited June 11, 2020 to evaluate the potential for pollutant of concern (POC) generating activities, as well as assess the City's progress in implementing its approach to address TMDL waste load allocation for sediment. The desktop analysis, coupled with the findings from the on-site field reconnaissance determined that Providence Park continues to exhibit site features, operations, and pollutant related indicators that could categorize it as "having the potential for an expected pollutant loading greater than the average pollutant loading for the land use identified in the TMDL".

Providence Park

The 20-acre Providence Park Site (Figure 9) features multiple recreational fields, playground, tennis courts, small community center, large parking lot, and several intermittent stream channels which act as the headwaters of Popes Head Creek. The playground and recreational fields increase the potential for sediment loading due to the nature of their use, and subsequent maintenance activities addressing the field use. The playground and fields are comprised of gravel, dirt, sand and other aggregate that may runoff during storm events. The site has a small detention pond (Figure 3 and 4) that outfalls to the headwaters of Popes Head Creek, which drain to Bull Run. The pond collects runoff from the majority of the fields, as well as offsite drainage through a natural inflow channel (Figure 5 and 6). As one of the means and methods to address the sediment TMDL for Bull Run, the City, as outlined in their original TMDL Action Plan (2016), committed to remove sediment in the detention pond and stabilize the inflow channel. Stabilization of the inflow channel and excavation of sediment was completed in 2020.



Figure 3. On-site detention pond (Fairfax BMP #2010010210) with enhanced sedimentation (2016)



Figure 4. On-site detention pond (Fairfax BMP #2010010210) cleared of sediment and debris (2020)



Figure 5. Eroded pond inflow channel (2016)



Figure 6. Stabilized, stone-lined inflow channel (2020)



Figure 7. Bank erosion in the Popes Head Creek stream system



Figure 8. High bank erosion in the Popes Head Creek stream system

During the June 11, 2020 site visit, an actively eroding channel was discovered at the eastern portion of the site. Figures 7 and 8 illustrate the existing conditions at the channel. The degradation of this channel is potentially enhancing the sediment loading to Bull Run, through Popes Head Creek.



Figure 9. Providence Park Site Limits

Action Plan elements to address significant sources of POC loadings from facilities of concern owned or operated by the MS4 operator

The following subsection outlines the City’s proposed means and methods for addressing existing and future significant sources of POC loadings from the facility identified in the preceding section site analysis.

Providence Park

To address the potential for significant sources of sediment loading from Providence Park, the City plans to continue to implement the following means and methods:

- The City will continue to annually inspect and maintain all BMPs at Providence Park.
- The City will maintain the functional condition of the on-site detention pond. All inflow points (piped/natural), outflow points (riser, principal spillway pipe, outfall area), and the pond impoundment area will continue to be cleared of sediment.
- The City will maintain the riprap lined inflow channel draining to the pond. The City will also monitor for active erosion along the channel.
- The City will evaluate the stream reach exhibiting bank erosion at the eastern portion of the park. The reach is approximately 650 linear feet. Table 2 illustrates a preliminary estimated load reduction for sediment (interim rates) if the city would restore the reach.
- The City will continue to utilize good housekeeping measures when performing all park maintenance activities.

Table 2. Estimated Sediment (TSS) reductions for a potential restoration of the 650’ stream reach

Stream Restoration Pollutant Removal Efficiency Worksheet					
Anticipated Installation Date:					
Calculated By:	JGM	HUC8:	2070010		
Checked By:	JJD	Calc. Method:	Protocol 1		
Stream:	Bull Run	River Basin:	Potomac	Coastal Plain:	No
Jurisdiction:	Fairfax				
	Stream Length	Rate	Total	Unit	
Interim Rates for Sediment 44.88/LF (15.13/LF Coastal Plain)		649.460	44.880	29147.765	lb/yr
Interim Rate for TN		649.460	0.075	48.710	lb/yr
Interim Rate for TP		649.460	0.068	44.163	lb/yr

Section 8 on page 19 of this Action Plan outlines the milestone dates for implementation of the means and methods to address the potential for significant sources of POC loadings from facilities of concern owned or operated by the City. Furthermore, the City plans to continue their current

pollution prevention activities at all City properties, as well as incorporate additional pollution prevention activities to address Minimum Control Measure (MCM) 6 of their MS4 Program Plan.

EXISTING OR NEW BEST MANAGEMENT PRACTICES

- 5. Existing or new management practices, control techniques, and system design and engineering methods, that have been or will be implemented as part of the MS4 Program Plan that are applicable to reducing the pollutant identified in the WLA.**
[This section of the Action Plan directly addresses Part II.B.3.e. of the MS4 Permit and DEQ Guidance Document Action Plan Content Item 5]

Recognizing that sediment pollutant discharges from the City's MS4 need to be controlled to the maximum extent practicable in order to protect the water quality in Bull Run, City leaders and staff have incorporated several Best Management Practices (BMPs) into their MS4 Program Plan (revised in 2019), and their subsequent Annual Report(s), that specifically target sediment and focus on source control. The following is a list of forty one (41) BMPs that meet the Minimum Control Measures (MCMs) set forth in the City's MS4 Program Plan, and are further developed in their MS4 Annual Reports, that specifically address the reduction of sediment pollutant loads for the City's MS4 (*Note: BMPs with an asterisk in their identifier (i.e. 2.a.*) are from the City's 2019 MS4 Program Plan*):

- BMP 1.1. Stream Monitoring - The City, in conjunction with George Mason University (GMU), will perform stream monitoring to assess stream water quality. The City will publish an annual report related to the findings.
- BMP 1.2. Storm Drain Marker Program - The City will continue to use markers on existing storm drain inlets and place markers on new storm drain inlets. Marker reads "Drains to the Chesapeake Bay, No Dumping".
- BMP 1.3. City of Fairfax Watershed Management Plan - The City will post their Watershed Management Plan, and any updates, to their website to allow public access to watershed management information.
- BMP 1.5. Additional Public Education Material - The City will publish a quarterly newsletter to deliver stormwater program messages and distribute stormwater related information to citizens.
- BMP 1.6. Additional Public Education Material – The City will continue to promote the "Only Rain Down the Storm Drain" initiative on their website to educate the public on the effects of stormwater conveyance and pollution.
- BMP 2.1 (2.a.*) Develop and Implement Procedures for Public Involvement - The City will continue to develop and implement procedures for the public to report potential illicit discharges, report potential stormwater pollution concerns, provide input on the MS4 program plan, and submit complaints.
- BMP 2.3. Public Education utilizing the City's Stormwater Website - The City will routinely update its webpage to inform residents on activities regarding the City's Stormwater Program, environmental protection, watershed management, and proper waste disposal.

- BMP 2.4. Public Outreach and Activities - The City will continue to participate in local public outreach activities including (1) The City Environmental Sustainability Committee; (2) The Accotink Creek Stream Cleanups and/or Watershed Cleanup Events; (3) The Fall Festival Event; and, (4) Continue to be a member of the Northern Virginia Clean Water Partners.
- BMP 3.1. Storm Sewer System Map - The City will continue to update and revise their Storm Sewer Outfall Map, located on the City's website, as needed. The City utilizes a Capital Improvement Plan (CIP) that entails system updates and GIS based revisions. As of 2019, the City mapping has been updated.
- BMP 3.2. Storm sewer line and structure maintenance - The City will continue to maintain their storm sewers and associated structures in order to provide uninhibited flow through the City drainage system.
- BMP 3.3. Illicit Discharge Detection and Elimination (IDDE) - The City will conduct semi-annual system screening on their outfalls for the presence of illicit discharges. The City will utilize their storm sewer GIS layers to help track the total number of outfalls screened and screening results. The City will keep details of any follow up actions.
- BMP 3.4. Illicit Discharge Detection and Elimination Enforcement Procedure - The City will use legal authority to issue summons and prosecute violators for negligence and/or failure to properly report spills.
- BMP 3.5. Spill Reporting to DEQ and DCR - The City will ensure that the responsible party(s) reports spills that reach state waters to the Department of Environmental Quality Response Program (PREP).
- BMP 3.6. Spill Investigation from small MS4 operated properties - The City will investigate spills and potential illicit discharges from small MS4 operated facilities, in order to determine the cause and enforce corrective action to prevent future occurrences.
- BMP 3.7. Prevention of hazardous / illicit substances into the storm sewer system - The City will continue to provide residents a hazardous waste disposal facility to prevent hazardous/illicit materials from reaching the storm sewer system.
- BMP 3.8. (3.a.*) Provide Written Notification to Any Downstream Adjacent MS4 of Interconnections - The City will provide written notification to downstream adjacent MS4s of any interconnections identified through the site plan review process.
- BMP 4.1. City of Fairfax Erosion and Sediment Control - The City will provide site plan review and on-site Erosion and Sediment (E&S) Control inspections, as outlined in §4.17. of the Zoning Ordinance, Chapter 110. Article 4. Site Development Standards.
- BMP 4.2. VSMP Permits - The City will continue to require construction site owners and operators to obtain a VSMP permit from the State for construction activities resulting in a land disturbance greater than one acre. The City will also continue to require an owner and/or operator to obtain a City specific VSMP Permit for construction activities greater than 2500 square feet, and less than one acre, satisfying Part II.B.5.a.(3) of the MS4 Permit.
- BMP 4.3. E & SC Staff Training - The City will continue to require Inspectors, Plan Reviewers, and Program Administrators to obtain the appropriate certifications as

required under the Virginia Stormwater Management Program, and Erosion and Sediment Control Law.

- BMP 4.4 Land Disturbing Activity Reporting - The City will track the number of land disturbing plans and acres disturbed and develop corresponding quarterly reports summarizing these activities.
- BMP 5.1. Public Facilities Manual - The City will continue to provide information to developers through the Public Facilities Manual (PFM) regarding Stormwater and Best Management Practice (BMP) design requirements. The PFM will be updated as required to address changes in design standards. A copy of the current PFM, as of 2020, can be found here: <https://www.fairfaxva.gov/government/public-works/public-facilities-manual>
- BMP 5.2 Stormwater Management Ordinance - The City will continue to follow and update their Stormwater Management Ordinance to meet the provisions set forth in the State Stormwater Requirements and Chesapeake Bay Program Requirements.
- BMP 5.3. Best Management Practice (BMP) and Stormwater Management (SWM) Facility Maintenance - The City will continue to require all public and privately owned BMPs and SWM Facilities to be maintained to function as it was designed. The City will continue to require SWM maintenance plans to be provided on each approved site plan along with an executed stormwater maintenance agreement.
- BMP 5.4. Stormwater management maintenance and inspection - The City will maintain a Post-Development Stormwater Management facility inspection program and will perform annual inspections on these facilities.
- BMP 5.5 Stormwater Management (SWM) Facility and Best Management Practice (BMP) Tracking - The City will track all known permanent SWM and BMP facilities discharging into their regulated MS4 area. The City will track the following information: (1) Type of structural SWM Facility installed as defined in the VA Stormwater BMP Clearinghouse; (2) Geographic Location (HUC); (3) The impaired surface water that the SWM facility is discharging into; (4) The number of acres treated. As of 2020 the City has inventoried 38 publicly owned BMPs and 388 privately owned BMPs.
- BMP 5.6. Best Management Practice (BMP) and Stormwater Management (SWM) Facility Enforcement Procedures - The City will provide BMPs and SWM facility owners with violation notices when their facilities are not functioning as designed. The City will take enforcement action if the items outlined in the violation notice are not addressed within the City's required time frame.
- BMP 5.7. Stormwater Program Enhancements - The City will continue to enhance stormwater programs to reduce the impacts resulting from new and re-development projects. The City will continue to encourage the use of new and innovative stormwater strategies such as Low Impact Development (LID) and Environmental Site Design (ESD) through the site plan process
- BMP 5.8. Stormwater Program Enhancements - Employee Training - The City will continue to provide Stormwater Management Facility inspection training for the City's inspection staff.

- BMP 5.9. Stormwater Infrastructure Evaluation and Assessment - The City will evaluate, collect data, and inspect 30,000 feet of storm pipe throughout the MS4 to ensure all infrastructure is functioning as designed.
- BMP 5.11. (5.c.*) - Utilize Legal Authority for Enforcement – The city will utilize legal authority for the enforcement of maintenance responsibilities if neglected by the owner. Legal authority is obtained primarily through the long-term SWMF Maintenance Agreement, and enforcement is conducted according to §4.16 of the Zoning Ordinance, Chapter 110, Article 4 (Site Development Standards).
- BMP 6.1. Leaf Collection - The City will continue to provide special curbside leaf collection services in November and December to prevent decaying leaves from getting into streams, causing blockages, and releasing nutrients.
- BMP 6.2. Yard Waste Collection - The City will continue to provide regular yard waste collection services to collect yard waste before it can be transported by stormwater runoff to the City's streams.
- BMP 6.3. - Pollution Prevention Information Posted on City website and flyers distributed to City residents - The City will maintain a Refuse and Recycling website with the most recent version of the City's Solid Waste Management Plan. The website will also provide information to the public on proper solid waste disposal techniques and recycling practices.
- BMP 6.6. Employee Education and Training on Pollution Prevention and Good Housekeeping - The City will continue their employee Pollution Prevention and Good Housekeeping procedures training programs
- BMP 6.7. - Stormwater Pollution Prevention Plans - The City will continue to maintain Stormwater Pollution Prevention Plans (SWPPP) for the City's Property Yard.
- BMP 6.8. (6.e.*) – Annual Review of High Priority Facilities – The City will annually review high priority facilities that do not have a SWPPP and develop a SWPPP if necessary.
- BMP 6.9. (6.f.*) – Review SWPPP After Unauthorized Discharges – The City will review the SWPPP after any unauthorized discharge, release, or spill and revise the SWPPP if necessary.
- BMP 6.10. - Implement Turf and Landscape Nutrient Management Plans - The City will maintain and implement Nutrient Management Plans (NMPs) on city owned lands where nutrients are applied to a contiguous area greater than one acre.
- BMP 6.11. - Written Good Housekeeping and Pollution Prevention Protocols for Daily Municipal Operations and Maintenance -The City will develop written good housekeeping measures and pollution prevention standard operating procedures to be incorporated into daily operational activities.
- BMP 6.12.(6.m.*) – Develop and Maintain Training Plan for Staff -The City will continue to maintain and regularly update their MS4 training plan.
- Other BMPs - Street Sweeping - The City will continue its Street Sweeping Program.

More detailed descriptions for each BMP can be found in the City's MS4 Annual Reports which are available for download at <https://www.fairfaxva.gov/government/public-works/stormwater-and-floodplain-management/municipal-separate-storm-sewer-system-ms4>. The City plans to continue implementation of these BMPs to address the sediment WLA listed in the aforementioned TMDL. Based on the results of the City's Action Plan assessment methodology (as described in Section 9 on page 21 of this Action Plan), an adaptive iterative approach will be used to enhance/replace these BMPs to achieve the most effective plan for reducing the discharge of sediment from the City's MS4 and to meet the assigned TMDL WLA.

LEGAL AUTHORITIES

6. *Legal authorities such as ordinances, state and other permits, orders, specific contract language, and inter-jurisdictional agreements applicable to reducing the POCs identified in each respective TMDL.*

[This section of the Action Plan directly addresses DEQ Guidance Document Action Plan Content Item 6]

Along with specific BMPs implemented to address sediment and focus on source control, the City's political leadership has included several provisions to the City's Code in order to facilitate a reduction in these pollutant discharges. These provisions include:

- Instituting legal ramifications regarding lack of maintenance and upkeep on all of the privately-owned Stormwater Management Facilities and Best Management Practices within the City
- Enforcing the Chesapeake Bay Preservation Act (CBPA) land disturbing activity requirements which include submission of a land disturbance application package for land disturbing activities greater than 2500 ft² and less than 1 acre. Furthermore, the City also requires submission of land disturbing application packages for single family home development, aligning with the more stringent code requirements outlined in Part II.B.5.a.(3) of the MS4 Permit
- Prohibiting the accumulation of solid waste on vacant lots, private roadways, and other lands within the City under Chapter 38 §3.38-38
- Instituting a creek and channel usage, improvement, and preservation provision to improve natural drainage systems within the City in accordance with 9VAC25-870-66 under Chapter 110 §4.16.5

The City has reviewed its MS4 Program Plan and ordinances to evaluate its ability to comply with the Special Condition for approved (other than the Chesapeake Bay TMDL) TMDLs (Part II.B) in the MS4 Permit. Based on this review, it is our opinion that the City of Fairfax does not require any new or modified legal authorities or policies to meet the requirements of this special condition. The following is a list of the City's relevant existing legal authorities and policies:

- City of Fairfax's Code of Ordinance
- City of Fairfax's Storm Drainage Ordinance - (Chapter 110 §4.16 of the City Code)
- City of Fairfax's MS4 Program Plan
- City of Fairfax's Public Facilities Manual (PFM)

However, the City may choose to coordinate with other adjacent MS4s (Fairfax County, Fairfax County Public Schools, Town of Vienna, VDOT, and the George Washington Memorial Parkway) and explore the idea of establishing memoranda of understanding (MOU) to clarify MS4 service boundary lines and inter-jurisdictional responsibilities for POC loads and subsequent required POC load reductions in the future.

ENHANCEMENTS TO PUBLIC EDUCATION, OUTREACH, AND EMPLOYEE TRAINING

- 7. *Enhancements to public education, outreach, and employee training programs to also promote methods to eliminate and reduce discharges of the POC(s) for which a WLA has been assigned. [This section of the Action Plan directly addresses Part II.B.3.g of the MS4 Permit and DEQ Guidance Document Action Plan Content Item 7]***

Enhancements to Public Education and Outreach Program

The City continues to implement a public education and outreach program as part of its MS4 Program Plan. The City's Stormwater and Floodplain Management webpage (Webpage) (<https://www.fairfaxva.gov/government/public-works/stormwater-and-floodplain-management>) is the primary public education and outreach tool utilized for reaching the program's targeted audiences and providing for distribution of educational materials to convey the appropriate messages. The City's webpage has twelve hyperlinks that each contain educational information related to reducing sediment loading in the Bull Run watershed. The twelve hyperlinks, and corresponding public education and outreach materials available at those hyperlinks, are as follows:

- ***Stormwater and Floodplain Management Hyperlink***
 - Contact information for the City of Fairfax Stormwater Resource Engineer
 - General information about City of Fairfax's stormwater system
- ***Current Stormwater Projects***
 - Northern Virginia Regional Commission Stream Corridor Restoration information and FAQs.
 - Stream Restoration Project Along an Unnamed Tributary of the Accotink Creek

- **Stormwater Information**
 - Illustrations and Material Educating the Public on Stormwater Runoff
 - Northern Virginia Clean Water Partners “Only Rain Down the Storm Drain” initiative, as well as corresponding website;
 - Links to the EPA, Virginia DEQ, Chesapeake Bay Foundation, and Center for Watershed Protection
 - Information on Better Management Practices through the Virginia BMP Clearinghouse
 - Mosquito issues in relation to stormwater management facilities
 - Map of the City of Fairfax Streams
- **Flood Plain Information**
 - City of Fairfax Floodplain Ordinance (current)
 - Floodplain Permit Application
 - The City of Fairfax Zoning Ordinance, which refers to the City’s official flood plain map
- **Reporting Illicit Discharges**
 - Directions on reporting illicit discharges
 - Contact information for the City of Fairfax Fire Marshal and Police Department
- **Municipal Separate Storm Sewer System (MS4)**
 - A link to the City’s MS4 permit
 - MS4 Annual report(s), 2019 Program Plan, and Annual MS-4 Permits
 - Map of Stormwater Outfall Structure Locations
 - Links to the approved 1st and 2nd Phase Chesapeake Bay TMDL Action Plans
- **Watershed Management Planning**
 - Link to the City of Fairfax Watershed Management Plan completed in 2005
 - Accotink Creek Stream Stability Assessment and Prioritization Plan and Final Report
- **Chesapeake Bay Ordinance**
 - Links to applications related to RPA and WQIA studies and submissions
 - The Chesapeake Bay Ordinance document, Addendum, and Preservation Area Mapping
 - Site Plan Application
 - Links to design guidelines for BMPs
- **Stormwater Drainage Improvement Policy and Procedures**
 - Outline of the policies and procedures related to the engineering, funding, approval, design, construction, etc. of stormwater projects in the City of Fairfax
- **BMP and Stormwater Management Inspection Program**
 - Includes details on the inspection and maintenance process for BMPs
 - Links to the Stormwater BMP Clearinghouse and City of Fairfax BMP Agreement
 - Link to a guidebook for private BMP owners/operators in Northern Virginia

- ***Protecting Water Resources Hyperlink***
 - Contact information for citizens to report illicit discharges;
 - Educational information, including hyperlinks to Federal, State, and Local Stormwater initiatives, on what citizens can do to report and prevent illicit discharges; and
 - Educational information, including hyperlinks to Federal, State, and Local Stormwater initiatives, on what children can do to protect our water resources
- ***Virginia Stormwater Management Program (VSMP) Hyperlink***
 - Access to the City's Stormwater Ordinance (City Code), as well as any revisions;
 - VSMP related forms, applications, fee forms, and checklists; and
 - The City of Fairfax's VSMP Responsibility Flow Chart

As can be seen from this list, the City has, and continues to, utilize their webpage to compile several different publications and hyperlinks to directly address the pollutant of concern (sediment) for which a WLA has been assigned to the City. The City plans to add more public education and outreach materials to their website annually. Furthermore, since the development of the initial Bull Run Action Plan (2016), the City has added seven of the twelve hyperlinks to their webpage in order to continue to facilitate public involvement and outreach. The hyperlinks compiled all existing City publications that directly address the pollutant of concern (sediment), and added the following materials:

- Virginia Stormwater BMP Clearinghouse website
- Accotink Creek Restoration Project information
- Updated City of Fairfax Code(s) to include an updated Zoning Code
- Floodplain Ordinance and Floodplain Permit Application
- MS4 Annual Reports, Program Plans, and Permits
- Map of Stormwater Outfall Structure Locations
- Chesapeake Bay TMDL Action Plan(s)
- City of Fairfax Watershed Management Plan
- Chesapeake Bay Ordinance
- Site Plan Application, Resource Protection Area Site-Specific Study, and Water Quality Impact Assessment
- Maintaining Stormwater Systems, A Guidebook for Private Owners and Operators in Northern Virginia

Along with a fluid Public Education and Outreach hyperlink, all new available publications posted to the hyperlink may be distributed at future public events, if relevant. Section 8 on page 19 of this Action Plan outlines the milestone dates for implementation of the means and methods proposed to enhance the City's Public Education and Outreach Program.

Enhancements to Employee Training Program

Per MCM 6 of the City's MS4 Program Plan, the City has set guidelines on employee training to prevent and reduce stormwater pollution from activities such as park and open space maintenance,

fleet vehicle and building maintenance, new construction and land disturbance, and stormwater system maintenance. The following is a list of current City employee training activities that specifically address the pollutant of concern (sediment) for which a WLA has been assigned to the City:

- City Inspectors, Plan Reviewers, and Program Administrators are required to obtain proper certification as necessary under the Virginia Erosion and Sediment Control Law;
- All pertinent staff are required to obtain the Virginia Department of Environmental Quality (DEQ) Stormwater Certifications;
- All pertinent staff utilize training material from the EPA, State of Virginia, and other relevant organizations in conjunction with current City training materials;
- The City maintains and regularly updates an MS4 Training Plan meeting the requirements of Part I.E.6.m.(1)-(7). and documents training activities according to Part I.E.6.n.(1)-(3). of the MS4 General Permit.

BMP/MILESTONES IMPLEMENTATION SCHEDULE

8. A schedule of interim milestones and implementation of the items in sections 5, 6, and 7. [This section of the Action Plan directly addresses Part II.B.3.h. of the MS4 Permit and DEQ Guidance Document Action Plan Content Item 8]

As permitted in Part II.B.2 of the MS4 General Permit and referred to in DEQ’s Draft Local TMDL Action Plan Guidance Document, the City is proposing to implement this Action Plan in multiple stages over multiple permit cycles using an adaptive iterative approach. This approach will allow the City to gather the necessary data and information to determine the most effective BMPs/management strategies for controlling POC loads along with identifying targeted areas for their implementation to meet the TMDL WLA for sediment. The following schedule is proposed for implementation of the BMPs and milestone activities included in this Action Plan for the current permit cycle ending on June 30, 2023:

<u>BMP/Milestone Activity</u>	<u>Schedule</u>
Submission of Local TMDL Action Plan to DEQ	June 30, 2020
BMP 1.1. Stream Monitoring	Annually
BMP 1.2. Storm Drain Marker Program	Annually
BMP 1.3. City of Fairfax Watershed Management Plan	As-Needed
BMP 1.5. Additional Public Education Material - Quarterly Newsletter	Quarterly
BMP 1.6. Additional Public Education Material “ <i>Only Rain Down the Storm Drain</i> ”	Monthly
BMP 2.1 (2.a*) Develop and Implement Procedures for Public Involvement	On-Going
BMP 2.3. Public Education utilizing the City’s Stormwater Website	On-Going
BMP 2.4. Public Outreach and Community Activities	Annually
BMP 3.1. Storm Sewer System Map	As-Needed
BMP 3.2. Storm sewer line and structure maintenance	Annually

BMP 3.3. Illicit Discharge Detection and Elimination (IDDE)	On-Going
BMP 3.4. IDDE Enforcement and Procedures	As-Needed
BMP 3.5. Spill Reporting to DEQ and DCR	As-Required
BMP 3.6. Spill Investigation from small MS4 Operated Properties	As-Needed
BMP 3.7. Prevention of Illicit substances into storm sewer system	Annually
BMP 3.8 (3.a.*) Provide Written Notification to Downstream Adjacent MS4s	As-Needed
BMP 4.1. City of Fairfax Erosion and Sediment Control (E&SC) Ordinance	Annually
BMP 4.1 (4.a.*) City of Fairfax Erosion and Sediment Control Regulations	Annually
BMP 4.2. VSMP Permits	On-Going
BMP 4.3. Staff E&SC Training	On-Going
BMP 4.4 Land Disturbing Activity Reporting	Annually
BMP 5.1. Public Facility Manual (PFM) Updates	As-Required
BMP 5.2. Stormwater Management Ordinance	As-Required
BMP 5.3. BMP and SWM Facility Maintenance Program	Annually
BMP 5.4. BMP and SWM Facility Inspections	Annually
BMP 5.5. SWM Facility Tracking	Annually
BMP 5.6. BMP and SWM Facility Enforcement Procedures	As-Needed
BMP 5.7. Stormwater Program Enhancements - LID and ESD Practices	As-Needed
BMP 5.8. Stormwater Program Enhancements - Employee Training	Annually
BMP 5.9. Stormwater Infrastructure Evaluation and Assessment	Annually
BMP 5.10 (5.a.*) Implementation of VA Stormwater Management Program	On-Going
BMP 5.11 (5.c.*) Utilize Legal Authority for Enforcement	On-Going
BMP 6.1. Leaf Collection	On-Going
BMP 6.2. Yard Waste Collection	On-Going
BMP 6.3. Pollution Prevention Information posted to City Website	On-Going
BMP 6.6. Employee Education on Pollution Prevention / Good Housekeeping	Annually
BMP 6.7. Stormwater Pollution Prevention Plans (SWPPPs)	Annually / As-Needed
BMP 6.8 (6.e.*) Annual Review of High Priority Facilities	Annually
BMP 6.9 (6.f.*) Review SWPPP After Unauthorized Discharges	As-Needed
BMP 6.10. Implement Turf and Landscape Nutrient Management Plans	Annually
BMP 6.11. Standard Operating Procedures (Updates)	As-Needed
BMP 6.12 (6.m.*) Develop and Maintain Training Plan for Staff	On-Going
- Other BMPs. Street Sweeping	Annually
Implement WQ Monitoring Program	On-Going
Prepare WQ Monitoring Reports	Annually
Prepare Estimate of "End Date" for Compliance with WLA	March 30, 2023
Identify BMPs to be Implemented during Next Permit Cycle (2023-2028)	March 30, 2023

METHODS TO ASSESS TMDL ACTION PLAN

9. Methods to assess TMDL Action Plans for their effectiveness in reducing the pollutants identified in the WLAs.

[This section of the Action Plan directly addresses DEQ Guidance Document Action Plan Content Item 9]

In order to assess the effectiveness of the City's Bull Run Sediment TMDL Action Plan, the City has prepared a Water Quality (WQ) Monitoring Program Plan. Under the program, the City will collect water quality samples to be analyzed for POCs, in this case Total Suspended Solids (TSS), twice a year from representative MS4 outfalls located within the drainage sheds of the impaired reaches of Difficult Run, Accotink Creek, and Popes Head Creek.

The City will analyze the data to determine if any adjustments are necessary to the Action Plan with regards to BMPs / management strategies for controlling POC loads. At the end of each MS4 permit reporting period, the City will also prepare brief annual WQ monitoring summary reports to be included with the City's MS4 Annual Report.

MEASURABLE GOALS AND METRICS TO TRACK COMPLIANCE

10. Measurable goals and the metrics that the permittee and Department will use to track those goals (and the milestones required by the permit). Evaluation metrics other than monitoring may be used to determine compliance with the TMDL(s).

[This section of the Action Plan directly addresses DEQ Guidance Document Action Plan Content Item 10]

The City intends to demonstrate its progress on implementation of this Action Plan by tracking, monitoring, and reporting on BMP/milestone activity progress in its MS4 Program Annual Report that is submitted to DEQ on October 1st of each permit year. In the Annual Report, the City will provide updates on the status of each of the BMP/milestone activities listed under Section 8 on page 19 of this Action Plan to include compliance with the proposed schedule. In accordance with the adaptive iterative approach adopted by the City, referenced in this Action Plan, the City may modify/replace BMPs, as necessary, to achieve the most effective plan for reducing the discharge of sediment from the City's MS4 and meeting the assigned TMDL WLA.