

3500 Pickett Rd

Submission Date: April 22, 2020
with revisions through May 21, 2020 to reflect BAR guidance

THE NEIGHBORHOODS OF
EYA *life within walking distance*[®]

New/revised pages are indicated with a new date. Where no changes were made, the submission date is indicated as 4/22/20.





BAR Submission 4/22/20

The use of these plans shall be restricted to the original project for which they were created, and publication thereof is expressly limited to such use. Reuse, reproduction or publication by any method, in whole or in part, is prohibited. This drawing is classified as part of an unmodulated collection of visual art under the 1978 copyright act. It is an exclusive work of original authorship. None of the pictorial graphic or technical charts or drawings depicted on this sheet may be reproduced by any method, including tracing or photocopying, stored in a retrieval system, or transmitted in any form or by means electronic, mechanical or otherwise, nor may they be used or re-used for any purpose without the express prior written permission of the author. Title and ownership remains with the author without prejudice. Visual contact with these plans shall constitute prima facie evidence of the acceptance of these restrictions. ALL RIGHTS RESERVED.
Copyright ©2019 EYA, LLC

THE NEIGHBORHOODS OF
EYA
life within walking distance
 4800 Hampden Lane, Suite 300 Bethesda, MD 20814
 T 301-634-8600 F 301-634-8601 weya.com

SITE PLAN
APRIL 22, 2020

PICKETT ROAD
CITY OF FAIRFAX, VA

Scale: N.T.S.

C1



'A' UNIT (25)

'B' UNIT (20)

'C' UNIT (5)

BAR Submission 4/22/20

The use of these plans shall be restricted to the original project for which they were created, and publication thereof is expressly limited to such use. Reuse, reproduction or publication by any method, in whole or in part, is prohibited. This drawing is classified as part of an unmodulated collection of visual art under the 1978 copyright act. It is an exclusive work of original authorship. None of the pictorial graphic or technical charts or drawings depicted on this sheet may be reproduced by any method, including tracing or photocopying, stored in a retrieval system, or transmitted in any form or by means electronic, mechanical or otherwise, nor may they be used or re-used for any purpose without the express prior written permission of the author. Title and ownership remains with the author without prejudice. Visual contact with these plans shall constitute prima facie evidence of the acceptance of these restrictions. ALL RIGHTS RESERVED.
Copyright ©2019 EYA, LLC

THE NEIGHBORHOODS OF

life within walking distance
 4800 Hampden Lane, Suite 300 Bethesda, MD 20814
 T 301-634-8600 F 301-634-8601 w.eya.com

KEY PLAN
 APRIL 22, 2020

PICKETT ROAD
 CITY OF FAIRFAX, VA

Scale: N.T.S.

C2



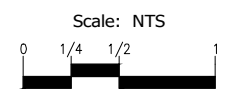
BAR Submission 4/22/20

SCHEMATIC RENDERING

FEBRUARY 14, 2020

3500 PICKETT ROAD

CITY OF FAIRFAX



A1



ENGINEERING SURVEYING/GEOMATICS
LANDSCAPE ARCHITECTURE PLANNING
VIKA VIRGINIA, LLC
8180 GREENSBORO DRIVE SUITE 200
TYSONS, VIRGINIA 22102
PHONE: (703) 442-7800
FAX: (703) 761-2787
TYSONS, VA. GERMANTOWN, MD.

THE INFORMATION, DESIGN, AND CONTENT OF THESE DRAWINGS AND/OR DOCUMENTS HERETO ARE PROPRIETARY TO VIKI VIRGINIA, LLC AND CONSTITUTE ITS PROPRIETARY INTELLECTUAL PROPERTY. THESE DRAWINGS AND/OR DOCUMENTS MUST NOT BE FORWARDED, SHARED, COPIED, DIGITALLY CONVERTED, MODIFIED, OR USED FOR ANY PURPOSE, IN ANY FORMAT, WITHOUT PRIOR WRITTEN AUTHORIZATION FROM VIKI VIRGINIA, LLC. VIOLATIONS MAY RESULT IN PROSECUTION. ONLY APPROVED, SIGNED AND SEALED PLANS OR DRAWINGS MAY BE UTILIZED FOR CONSTRUCTION PURPOSES.

© 2019 VIKI VIRGINIA, LLC

DEVELOPER
EYA DEVELOPMENT LLC
4800 HAMPTON LANE
SUITE 300
BETHESDA, MD 20814
301-634-8614

LAND USE ATTORNEY:
COOLEY LLP
11951 FREEDOM DRIVE
RESTON, VA 20190-5656
ATTN: MARK LOONEY
(703) 456-8039

LANDSCAPE ARCHITECT:
STUDIO 39
6416 GROVEDALE DRIVE
ALEXANDRIA, VA 22310
ATTN: JOE PLUMPE
(703) 719-6500

REVISIONS	DATE
2ND SUBMISSION	02/07/2020



3500 PICKETT ROAD
CITY OF FAIRFAX, VIRGINIA

ARCHITECTURAL ELEVATIONS

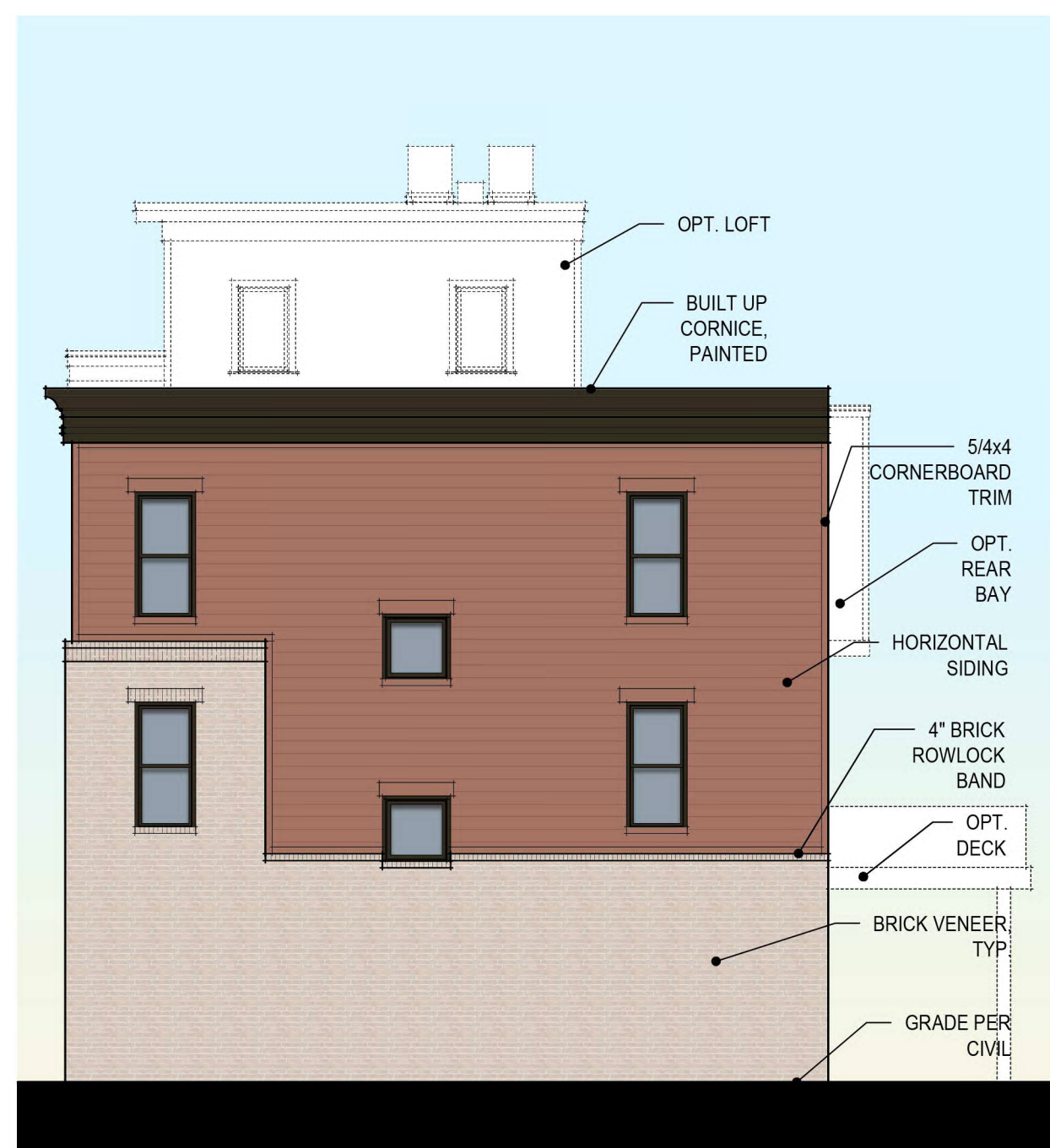
A2



B TYPICAL BUILDING ELEVATIONS (UNIT A)
Scale: 1/8" = 1'-0"
FRONT LOAD ELEVATIONS



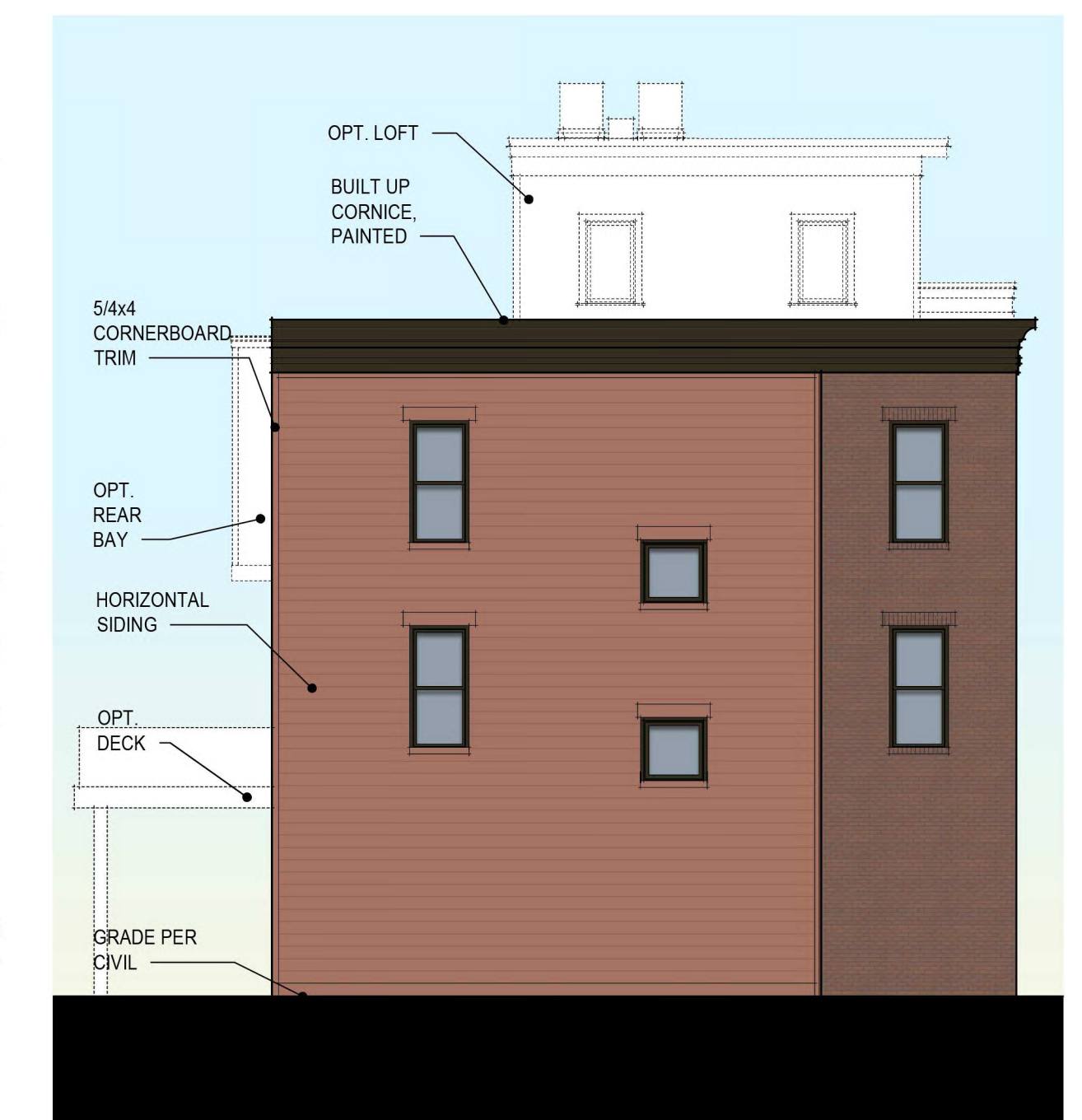
A TYPICAL BUILDING ELEVATIONS (UNIT B & C)
Scale: 1/8" = 1'-0"
REAR LOAD ELEVATIONS



UNIT TYPE 'A' - ALTERNATE SIDE ELEVATION



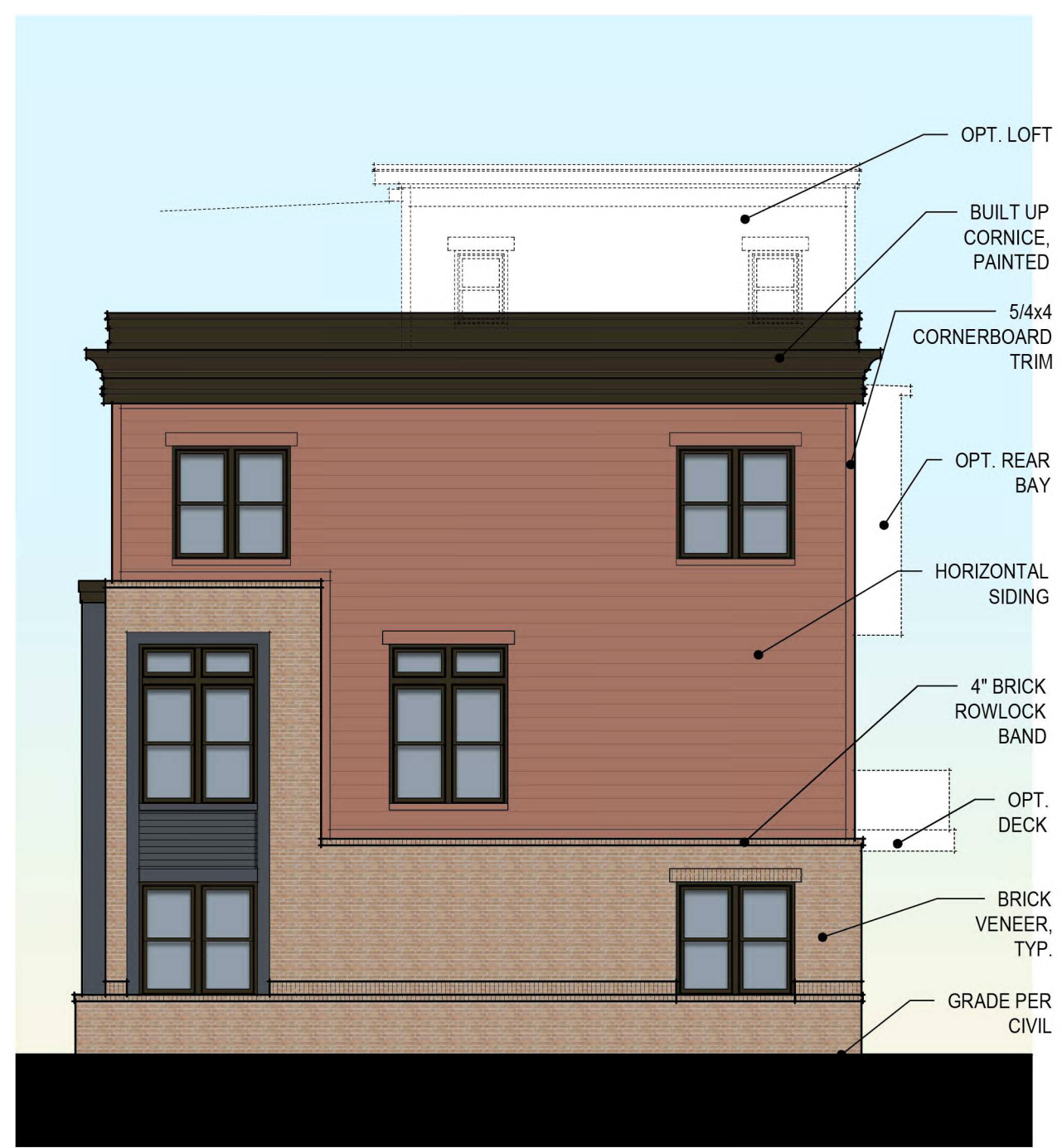
UNIT TYPE 'A' - REAR ELEVATION



UNIT TYPE 'A' - STANDARD SIDE ELEVATION

B TYPICAL BUILDING ELEVATIONS

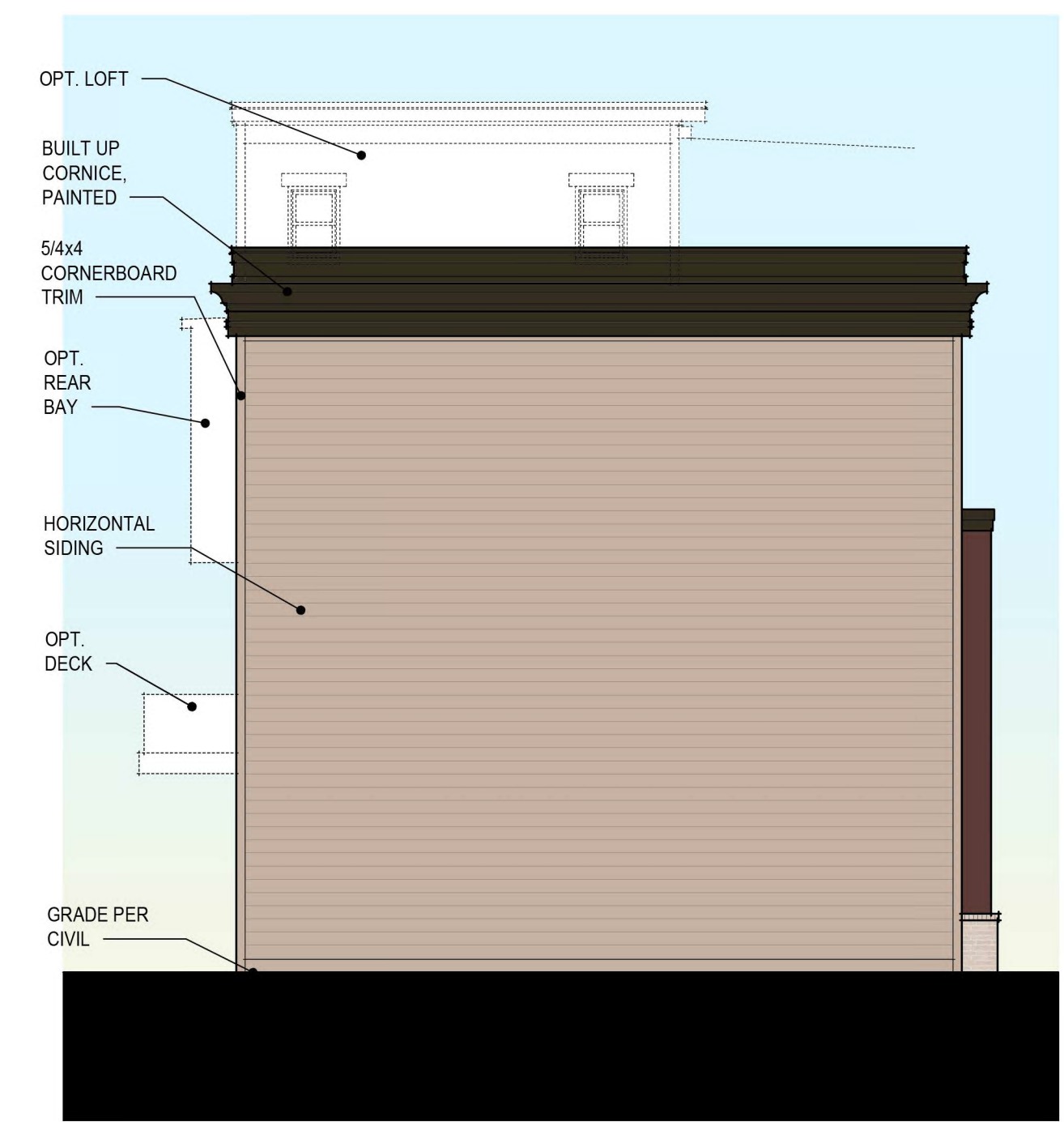
Scale: 1/8" = 1'-0"



UNIT TYPES 'B' & 'C' - ALTERNATE SIDE ELEVATION



UNIT TYPES 'B' & 'C' - REAR ELEVATION



UNIT TYPES 'B' & 'C' - STANDARD SIDE ELEVATION

(AT CONDITIONS WHERE BUILDING TO BUILDING SEPARATION IS LESS THAN 10FT)

A TYPICAL BUILDING ELEVATIONS

Scale: 1/8" = 1'-0"

BAR Submission 4/22/20

The use of these plans shall be restricted to the original project for which they were created, and publication thereof is expressly limited to such use. Reuse, reproduction or publication by any method, in whole or in part, is prohibited. This drawing is classified as part of an unpublished collection of visual art under the 1978 copyright act. It is an exclusive work of original authorship. None of the pictorial graphic or technical charts or drawings depicted on this sheet may be reproduced by any method, including tracing or photocopying, stored in a retrieval system, or transmitted in any form or by means electronic, mechanical or otherwise, nor may they be used or re-used for any purpose without the express prior written permission of the author. Title and ownership remains with the author without prejudice. Visual contact with these plans shall constitute prima facie evidence of the acceptance of these restrictions. ALL RIGHTS RESERVED.
Copyright ©2019 EYA, LLC

THE NEIGHBORHOODS OF

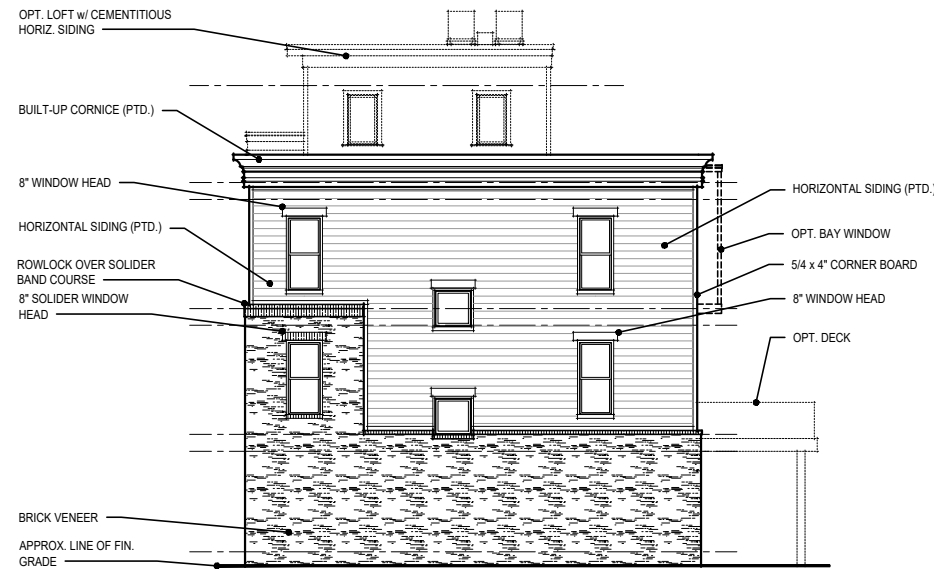
life within walking distance
 4800 Hampden Lane, Suite 300 Bethesda, MD 20814
 T 301-634-8600 F 301-634-8601 w.eya.com

SCHEMATIC ELEVATIONS
APRIL 22, 2020

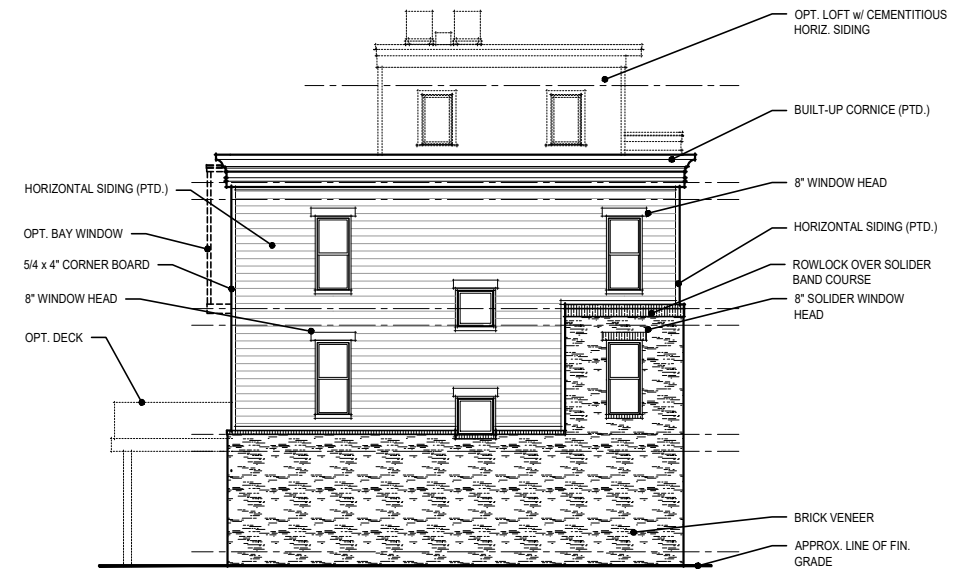
PICKETT ROAD
CITY OF FAIRFAX, VA

Scale: 1/8" = 1'-0"

A2a



C RIGHT SIDE ELEVATION - LOT 8
Scale: 1/16" = 1'-0" (ALTERNATE)



B LEFT SIDE ELEVATION - LOT 1
Scale: 1/16" = 1'-0" (ALTERNATE)



A REAR ELEVATION - LOTS 1-8
Scale: 1/16" = 1'-0"

BAR Supplemental Submission 5/21/20

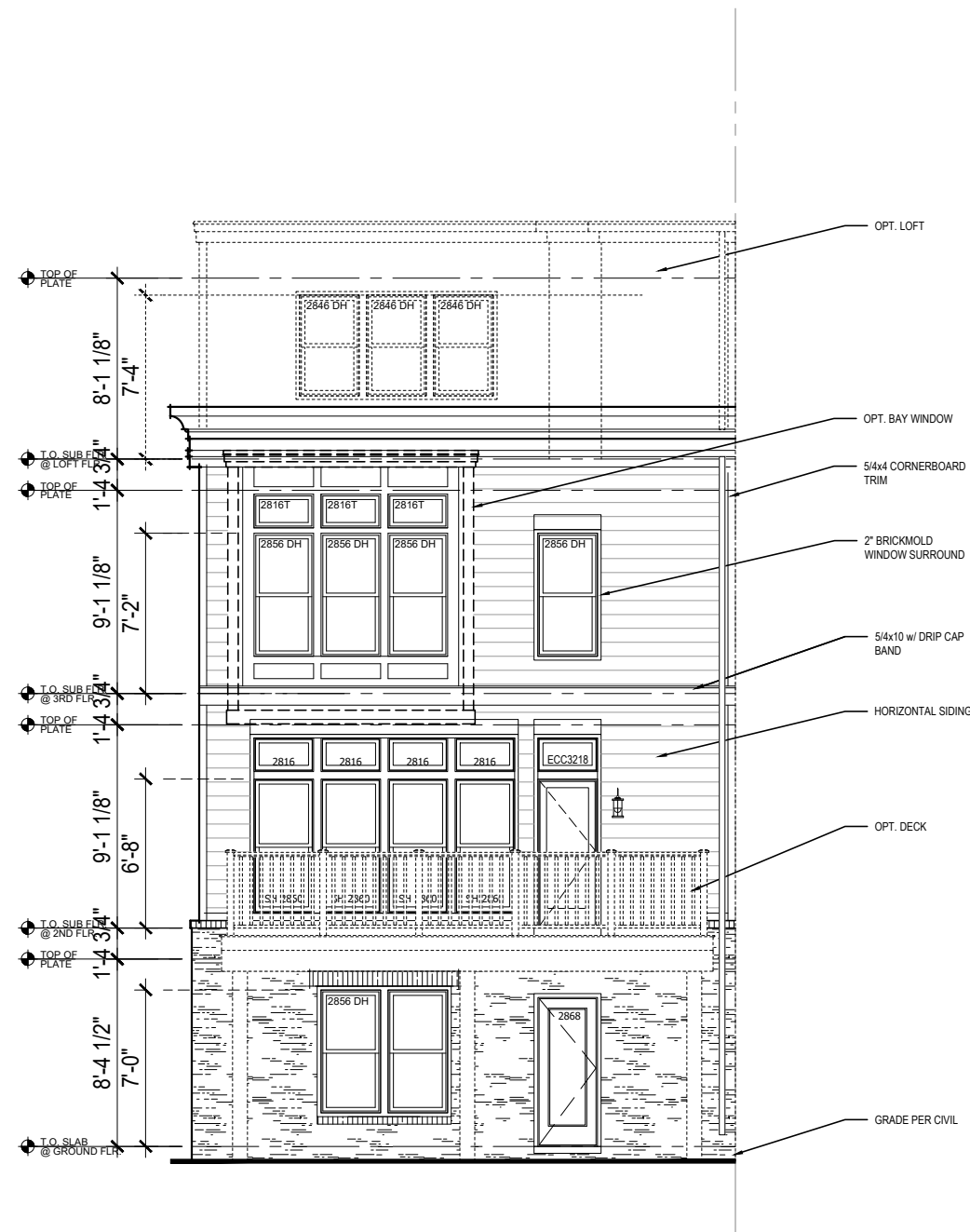


FRONT ELEVATION #1

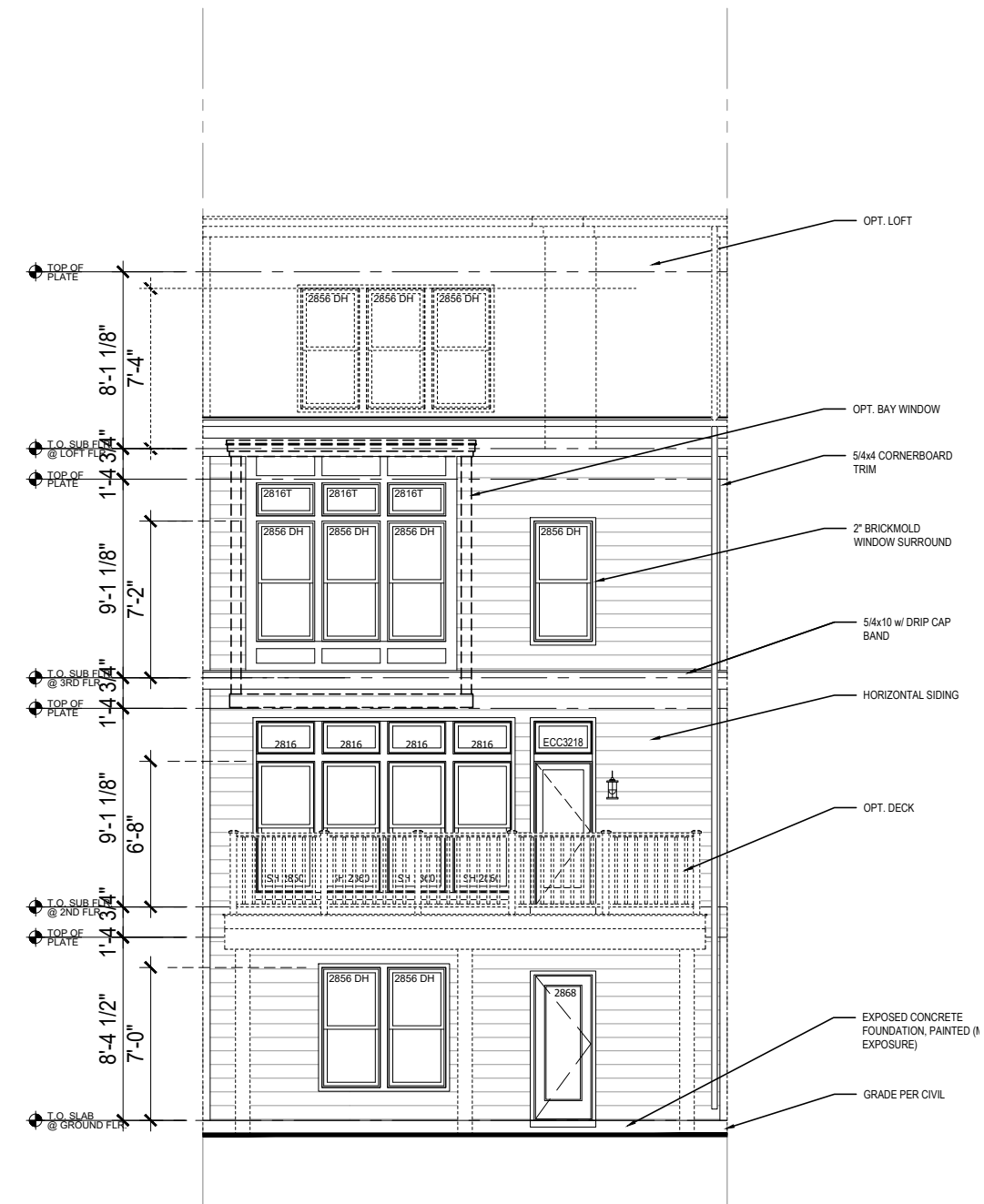


FRONT ELEVATION #2

BAR Supplemental Submission 5/21/20
 BAR Submission 4/22/20



REAR ELEVATION - ALTERNATE
(Lot 1, Lots 2-4 similar)



REAR ELEVATION

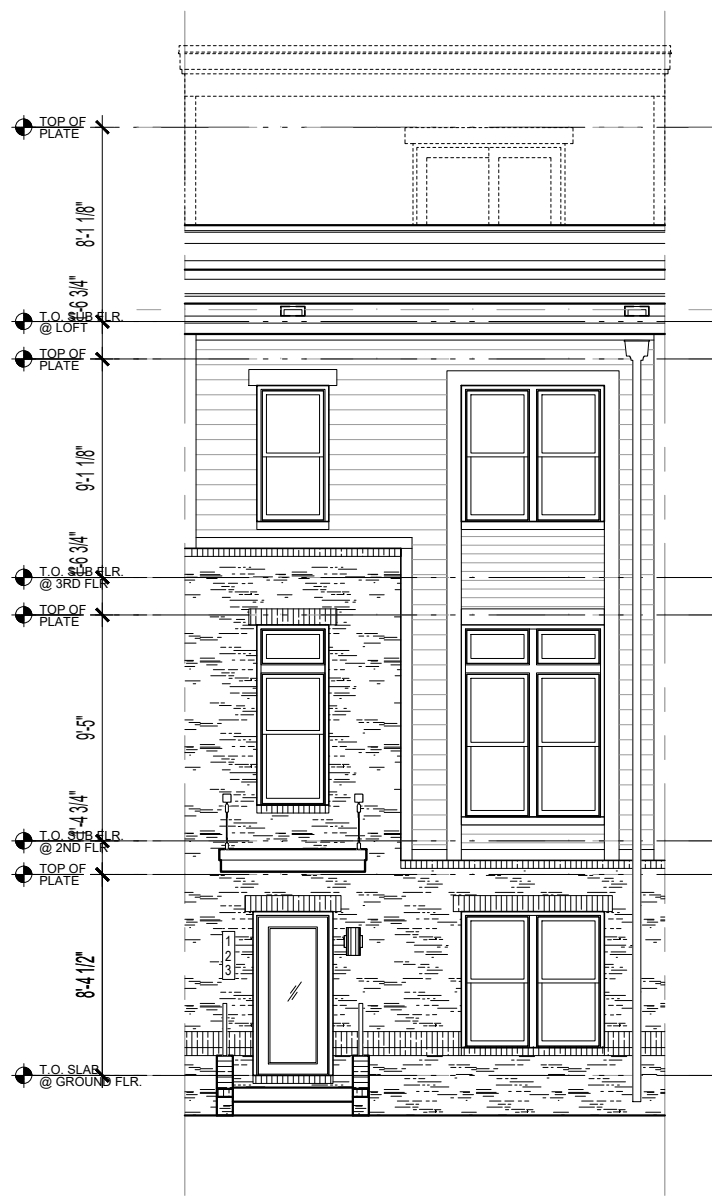


SIDE ELEVATION - ALTERNATE
(Lots 1, 8, 9 & 25)

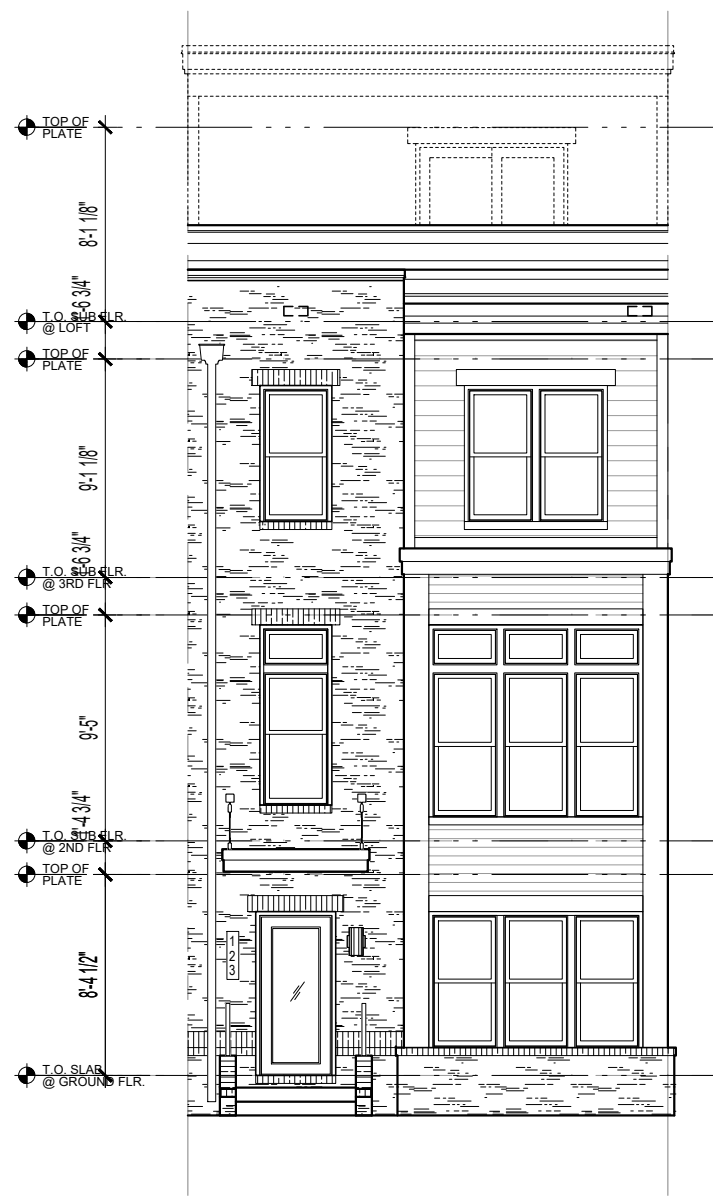


SIDE ELEVATION - STANDARD
(Lots 13, 14, 20 & 21)

BAR Supplemental Submission 5/21/20
BAR Submission 4/22/20



FRONT ELEVATION #1



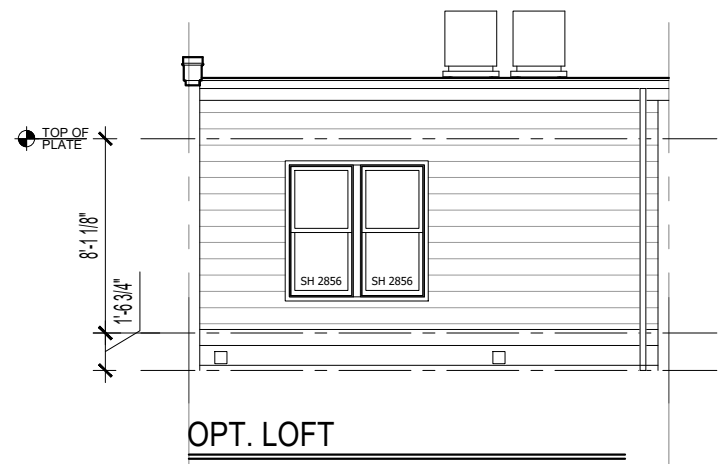
FRONT ELEVATION #2



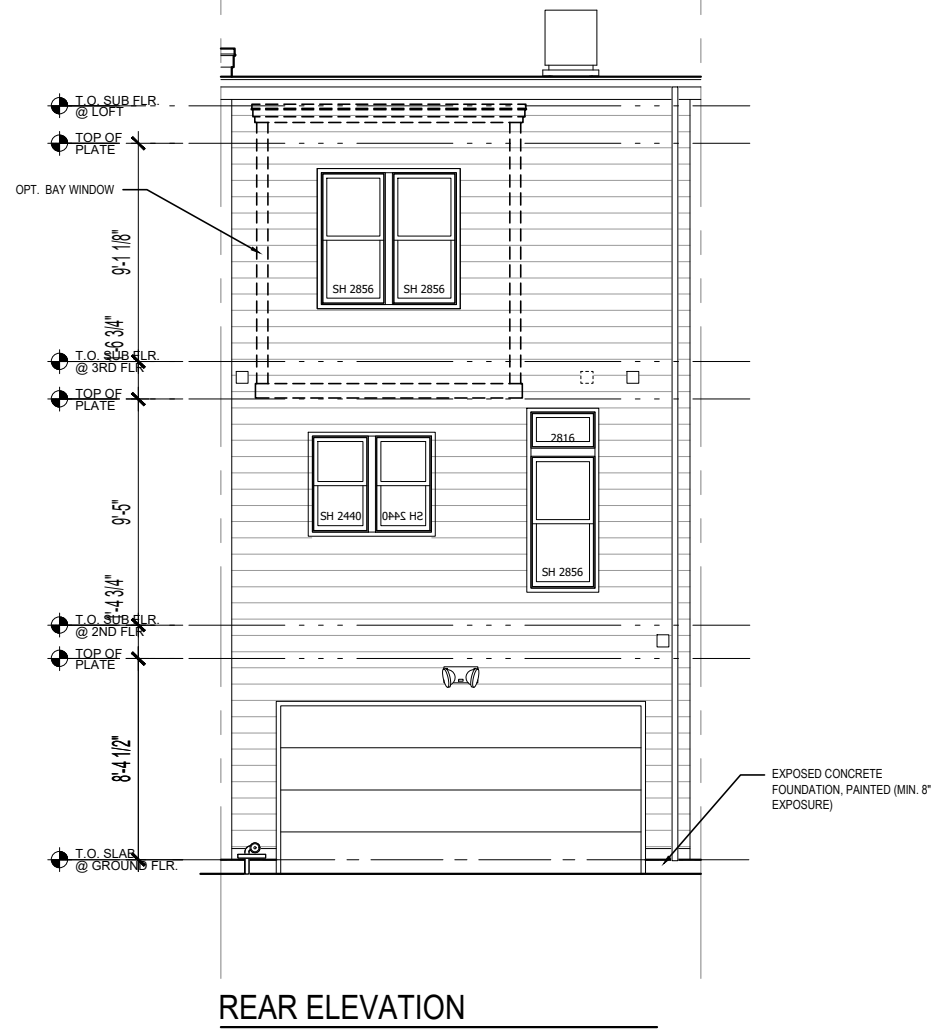
FRONT ELEVATION #3

Note: See sheet A2 & A2a for material references.

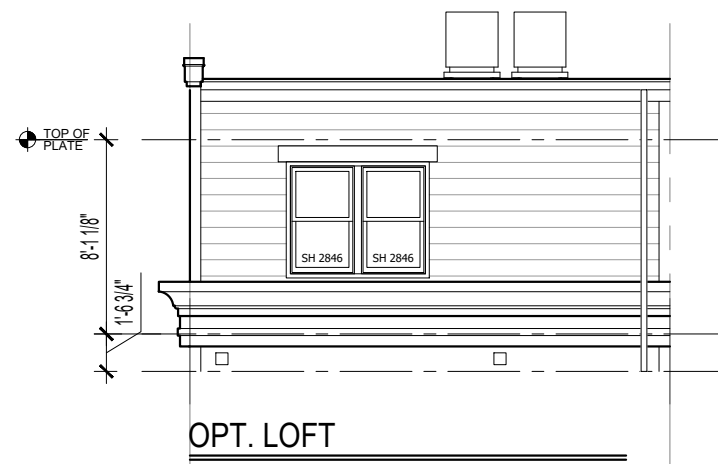
BAR Submission 4/22/20



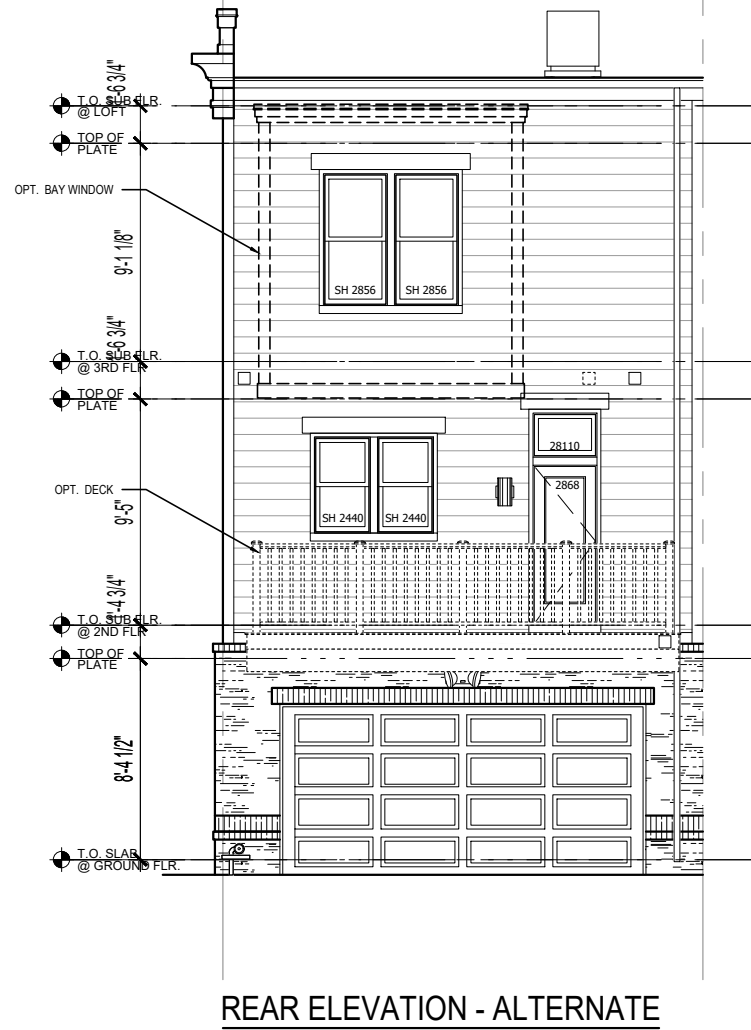
OPT. LOFT



REAR ELEVATION



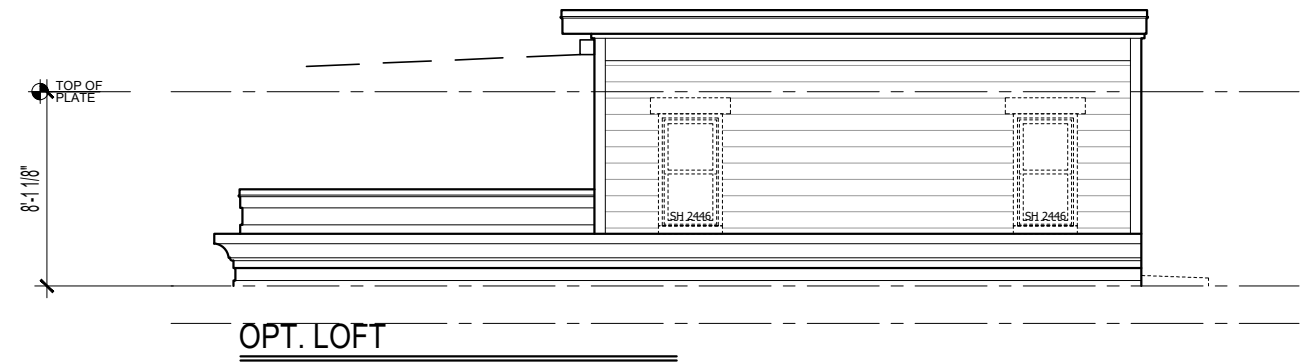
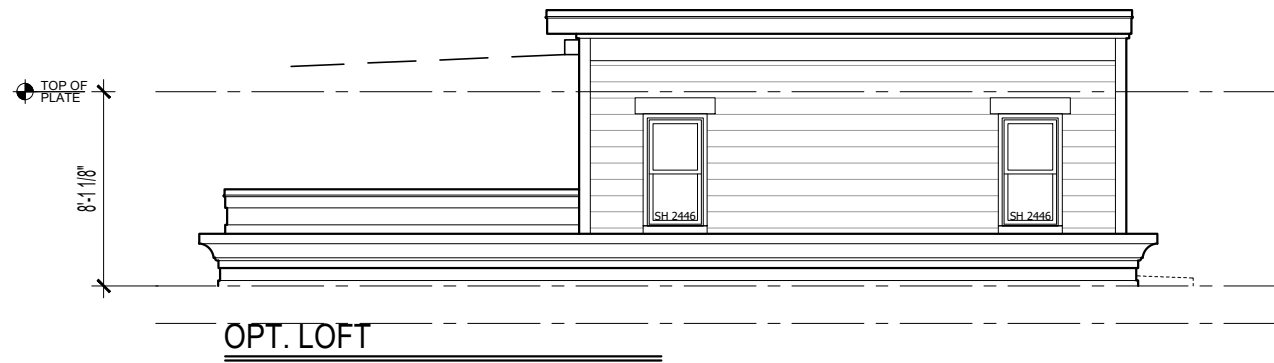
OPT. LOFT



REAR ELEVATION - ALTERNATE

(SHOWN w/ OPT. DECK) (Lots 26, 38, 39 & 50)

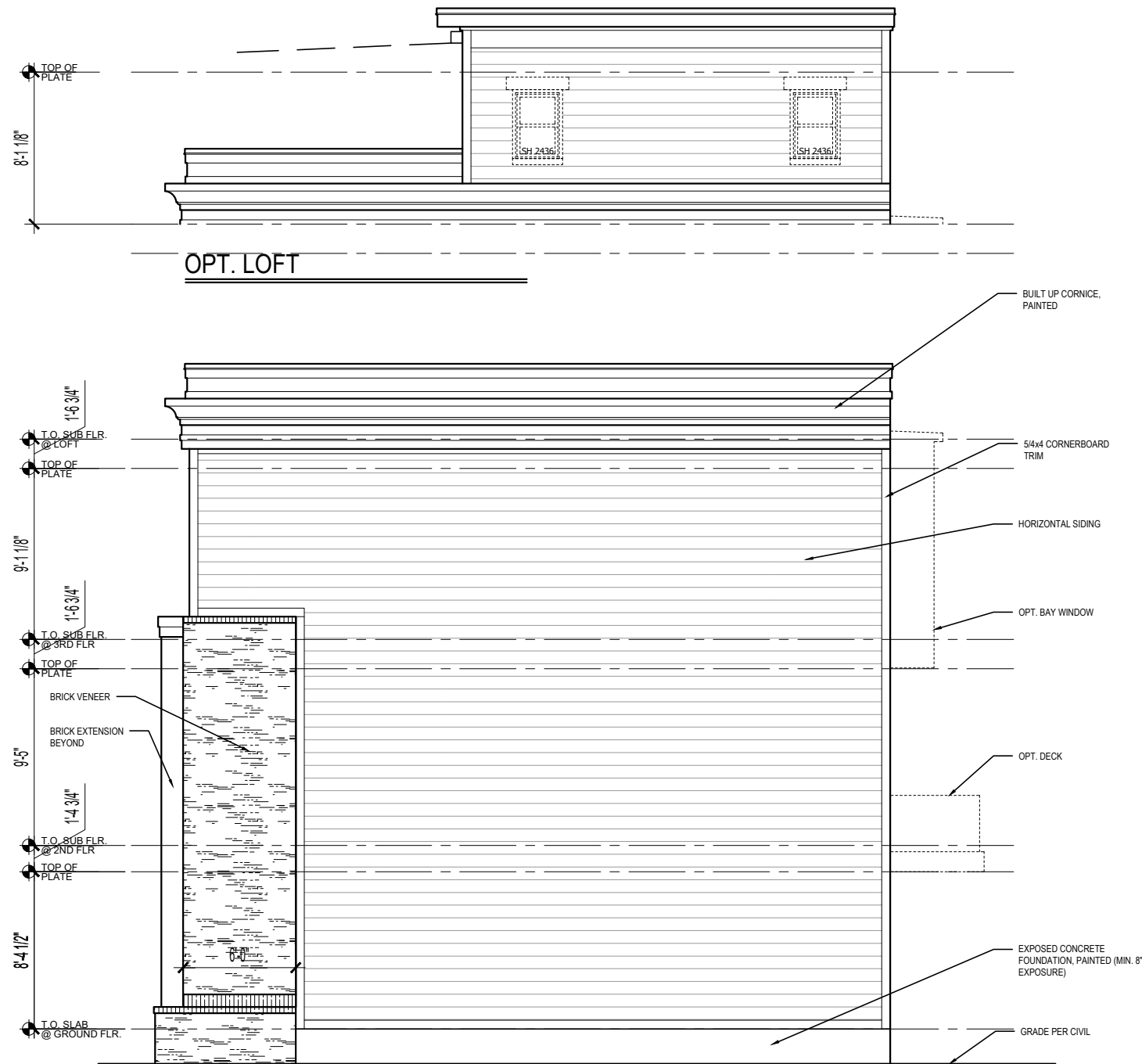
BAR Supplemental Submission 5/21/20
 BAR Submission 4/22/20



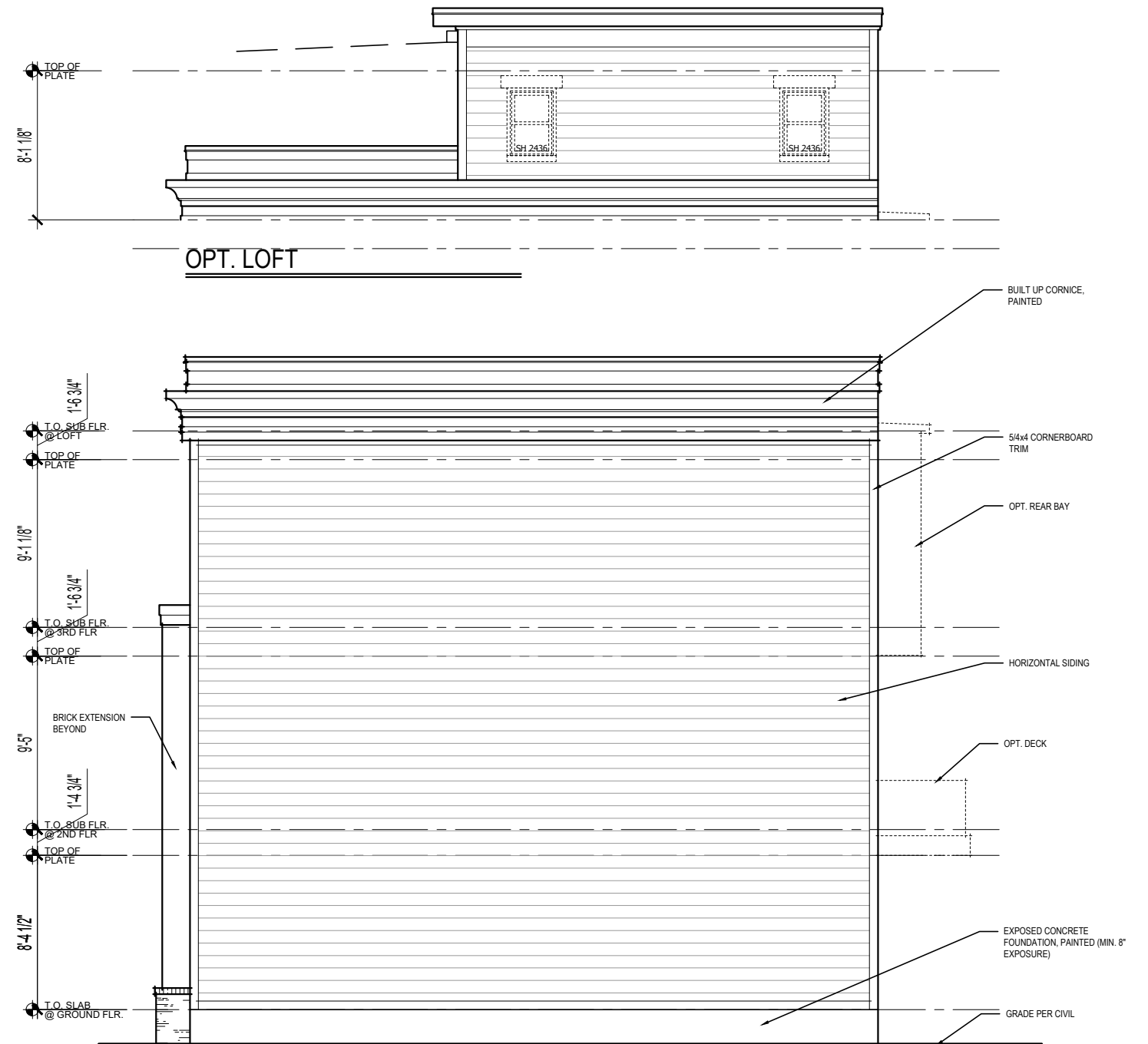
SIDE ELEVATION - ALTERNATE
(Lot 26, 38, 39 & 50)

SIDE ELEVATION - STANDARD
NOTE: SEE BUILDING ELEVATIONS FOR WINDOW AND BRICK VENEER PER LOT CONDITION

BAR Supplemental Submission 5/21/20
BAR Submission 4/22/20

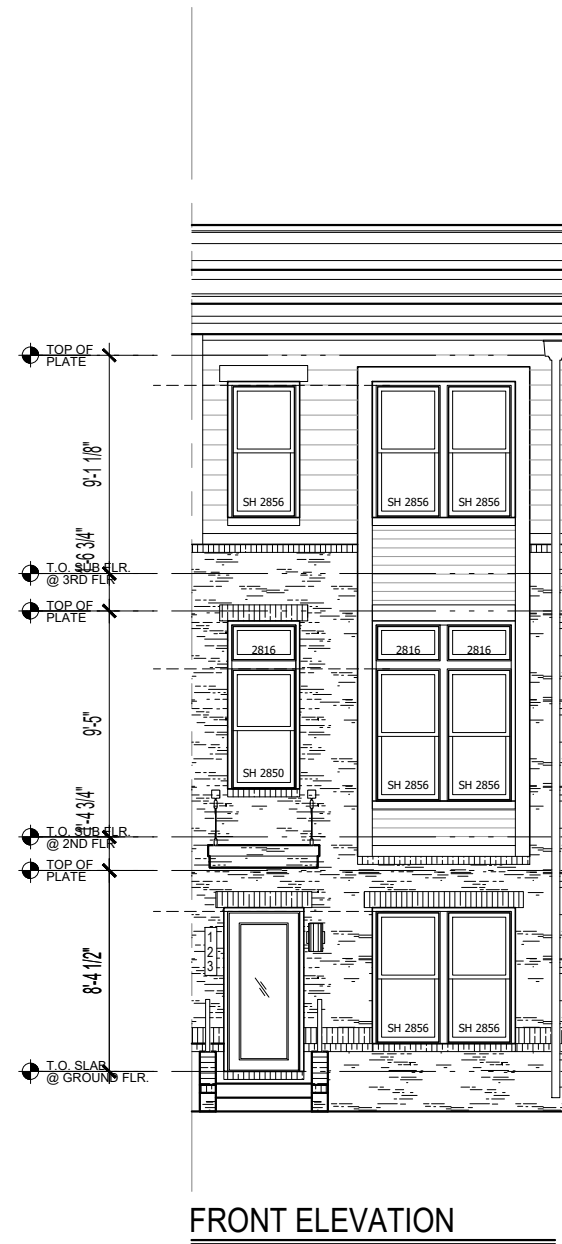
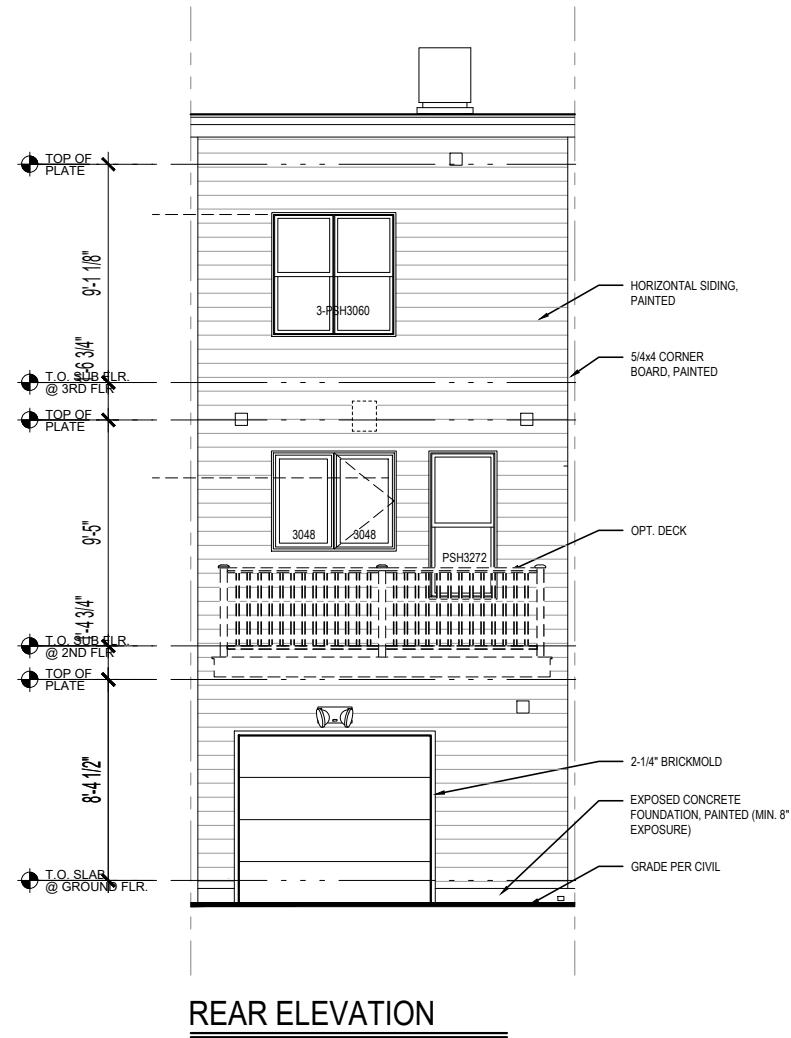


SIDE ELEVATION - STANDARD (LOTS 44 and 45)



SIDE ELEVATION - STANDARD (LOTS 32 and 33)

BAR Supplemental Submission 5/21/20
BAR Submission 4/22/20



BAR Supplemental Submission 5/21/20
 BAR Submission 4/22/20