



ENGINEERING SURVEYING/GEOMATICS
 LANDSCAPE ARCHITECTURE PLANNING
VIKA VIRGINIA, LLC
 8180 GREENSBORO DRIVE SUITE 200
 TYSONS, VIRGINIA 22102
 PHONE: (703) 442-7800
 FAX: (703) 761-2787
 TYSONS, VA. GERMANTOWN, MD.

THE INFORMATION, DESIGN, AND CONTENT OF THESE DRAWINGS AND/OR DOCUMENTS HERETO ARE PROPRIETARY TO VIKA VIRGINIA, LLC AND CONSTITUTE ITS PROPRIETARY INTELLECTUAL PROPERTY. THESE DRAWINGS AND/OR DOCUMENTS MUST NOT BE FORWARDED, SHARED, COPIED, DIGITALLY CONVERTED, MODIFIED, OR USED FOR ANY PURPOSE, IN ANY FORMAT, WITHOUT PRIOR WRITTEN AUTHORIZATION FROM VIKA VIRGINIA, LLC. VIOLATIONS MAY RESULT IN PROSECUTION. ONLY APPROVED, SIGNED AND SEALED PLANS OR DRAWINGS MAY BE UTILIZED FOR CONSTRUCTION PURPOSES.

© 2019 VIKA VIRGINIA, LLC

DEVELOPER
 EYA DEVELOPMENT LLC
 4800 HAMPTON LANE
 SUITE 300
 BETHESDA, MD 20814
 301-634-8614

LAND USE ATTORNEY:
 COOLEY LLP
 11951 FREEDOM DRIVE
 RESTON, VA 0190-5656
 ATTN: JOE PLUMPE
 (703) 456-8039

LANDSCAPE ARCHITECT:
 STUDIO 39
 6416 GROVEDALE DRIVE
 ALEXANDRIA, VA 22310
 ATTN: JOE PLUMPE
 (703) 719-6500

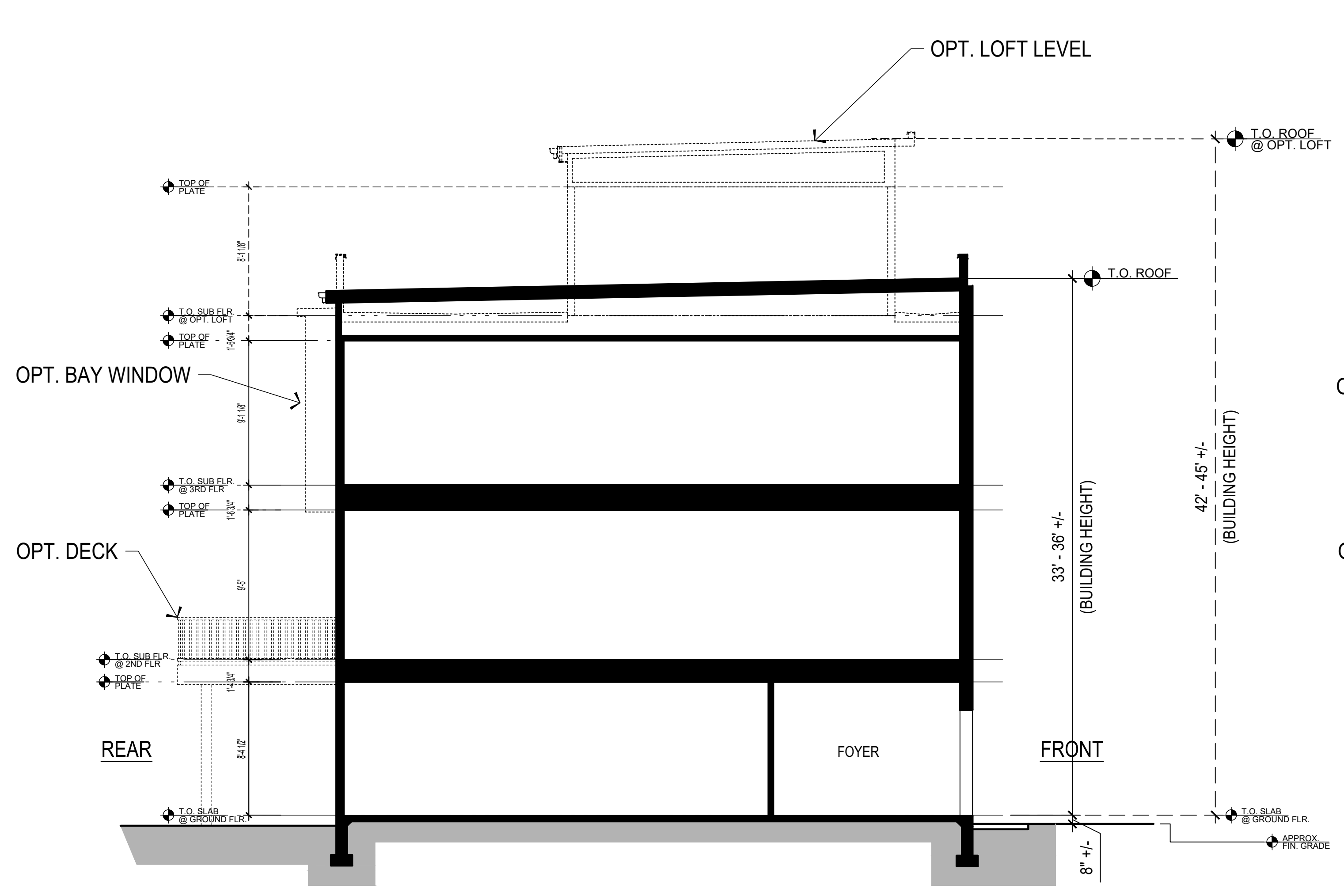
REVISIONS	DATE
1ST SUBMISSION	11/22/19

PROFESSIONAL SEAL

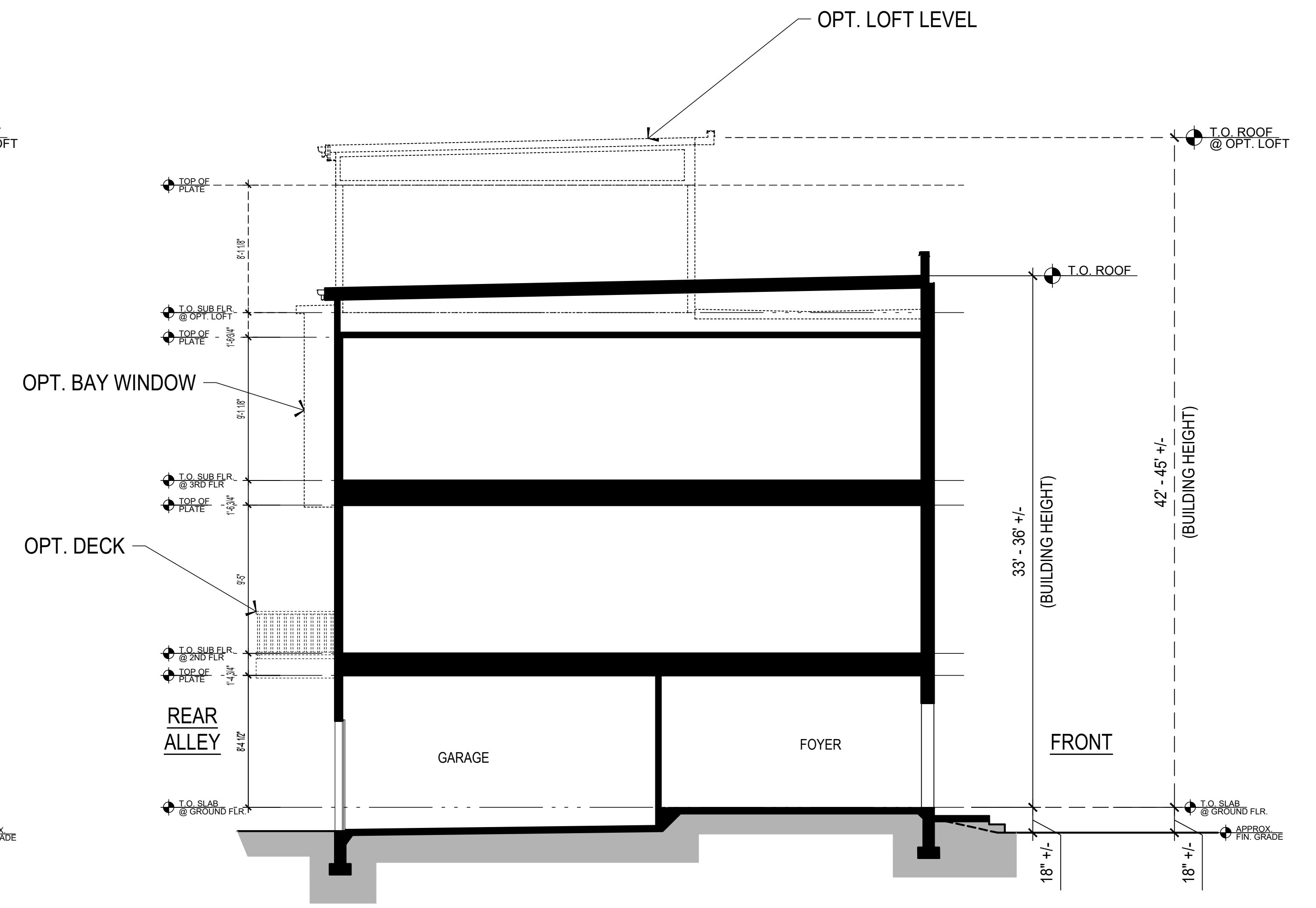
3500 PICKETT ROAD
 CITY OF FAIRFAX, VIRGINIA

TYPICAL BUILDING SECTIONS

A9

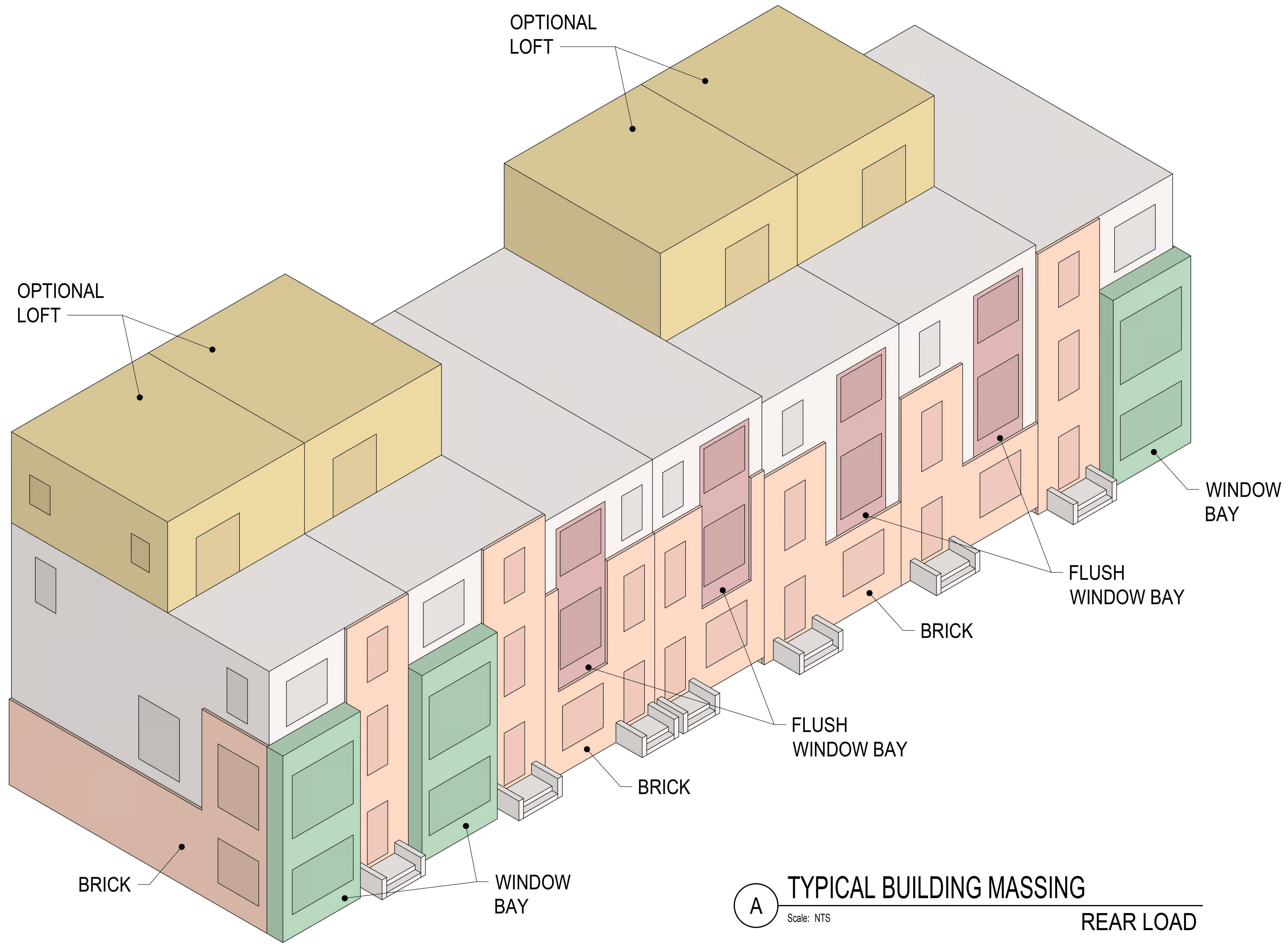


B TYPICAL BUILDING SECTION
 Scale: 3/16" = 1'-0"
FRONT LOAD UNITS UNIT A



A TYPICAL BUILDING SECTION
 Scale: 3/16" = 1'-0"
REAR LOAD UNITS UNIT B (UNIT C SIMILAR)

F:\Dep\Acquisition\LandPur\3500 Pickett Rd\Architecture\Elevations\DWG\Pickett - all elevations_v2.dwg, 2/5/2020 4:23:19 PM



A TYPICAL BUILDING MASSING
 Scale: NTS
 REAR LOAD

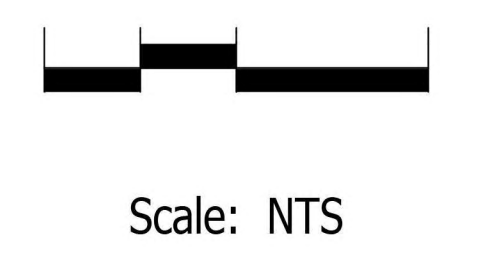
BAR Submission 4/22/20

The use of these plans shall be restricted to the original project for which they were created, and publication thereof is expressly limited to such use. Reuse, reproduction or publication by any method, in whole or in part, is prohibited. This drawing is classified as part of an unclassified collection of visual art under the 1978 copyright act. It is an exclusive work of original authorship. None of the pictorial graphic or technical charts or drawings depicted on this sheet may be reproduced by any method, including tracing or photocopying, stored in a retrieval system, or transmitted in any form or by means electronic, mechanical or otherwise, nor may they be used or re-used for any purpose without the express prior written permission of the author. Title and ownership remains with the author without prejudice. Visual contact with these plans shall constitute prima facie evidence of the acceptance of these restrictions. ALL RIGHTS RESERVED.
 Copyright ©2019 EYA, LLC

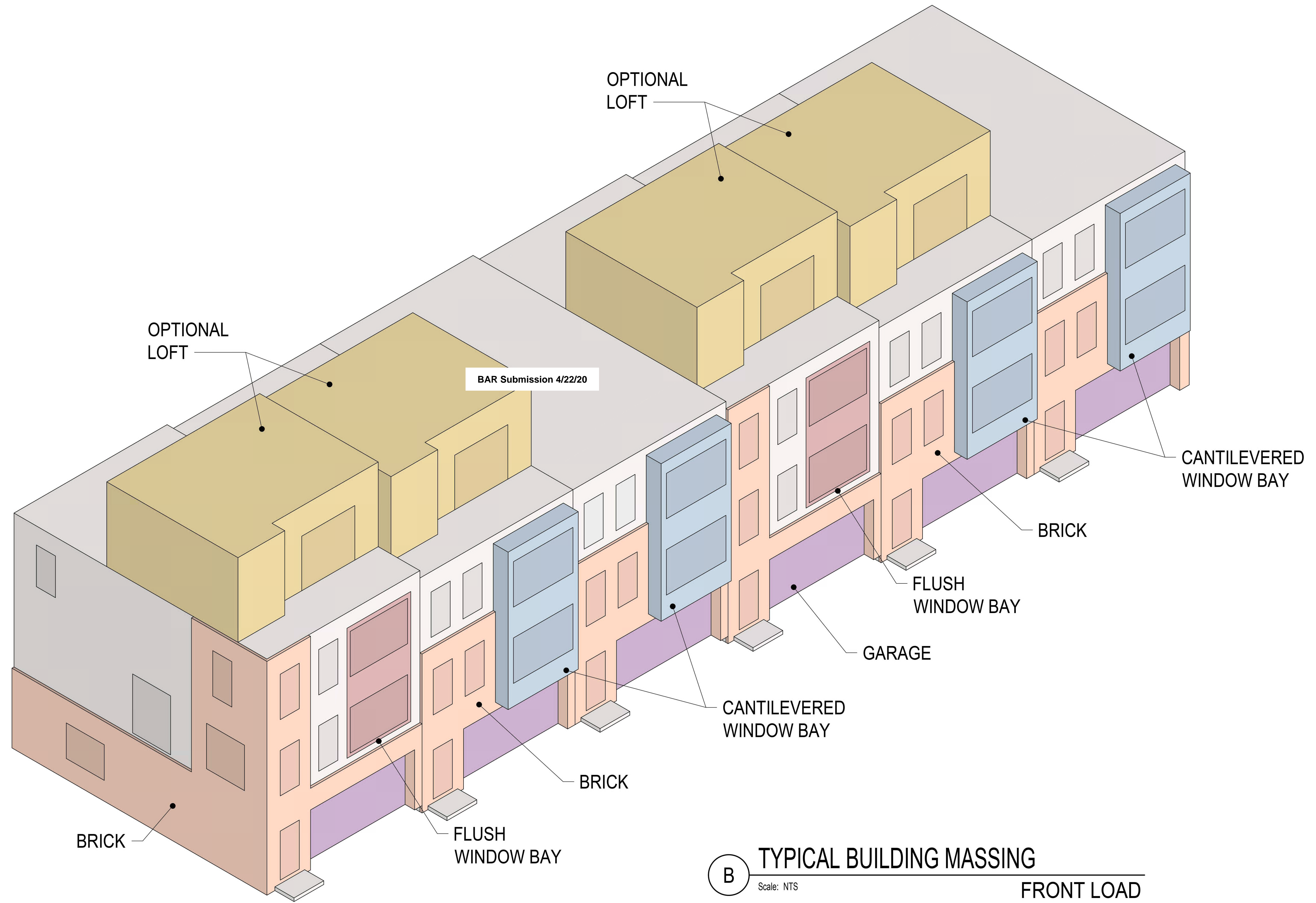
THE NEIGHBORHOODS OF
EYA
life within walking distance
 4800 Hampden Lane, Suite 300 Bethesda, MD 20814
 t 301-634-8600 f 301-634-8601 w eya.com

TYPICAL BUILDING MASSING - REAR LOAD
FEBRUARY 12, 2020

PICKETT ROAD
CITY OF FAIRFAX, VA



A10



BAR Submission 4/22/20

The use of these plans shall be restricted to the original project for which they were created, and publication thereof is expressly limited to such use. Reuse, reproduction or publication by any method, in whole or in part, is prohibited. This drawing is classified as part of an unpublished collection of visual art under the 1978 copyright act. It is an exclusive work of original authorship. None of the pictorial graphic or technical charts or drawings depicted on this sheet may be reproduced by any method, including tracing or photocopying, stored in a retrieval system, or transmitted in any form or by means electronic, mechanical or otherwise, nor may they be used or re-used for any purpose without the express prior written permission of the author. Title and ownership remains with the author without prejudice. Visual contact with these plans shall constitute prima facie evidence of the acceptance of these restrictions. ALL RIGHTS RESERVED.
Copyright ©2019 EYA, LLC

THE NEIGHBORHOODS OF
EYA
life within walking distance®
4800 Hampden Lane, Suite 300 Bethesda, MD 20814
t 301-634-8600 f 301-634-8601 w eya.com

TYPICAL BUILDING MASSING - FRONT LOAD

PICKETT ROAD
CITY OF FAIRFAX, VA

FEBRUARY 12, 2020

Scale: NTS

A11

3500 Pickett Road

City of Fairfax, VA

<p>MASONRY</p>	<p>TRIM, SIDING, & DOORS</p>		
 <p>Glen Gery Brick Ashfield Modular</p>  <p>Argos Mortar Beige</p>	 <p>Siding & Trim (Select Locations) Painted SW Color Mix - Brownstone</p>	 <p>Bay Siding & Trim, Doors & Frames Painted SW 7645 - Thunder Gray</p>	 <p>Rear Siding (Select Locations) Painted SW 6086 - Sand Dune</p>
<p>WINDOWS</p>	<p>EXTERIOR ACCESSORIES</p>		
 <p>Window Frames (Typ.) Jeldwen Dark Bronze</p>  <p>Window Frames (At Select Rear Windows) Jeldwen White</p>	 <p>Cornice Painted SW 7675 - Sealskin</p>	 <p>HVAC Louvers Painted SW 2808 - Rockwood Dark Brown</p>	 <p>Metals Jeldwen Dark Bronze</p>
<p>COLOR SCHEME 1</p>	<p>DECKING</p>  <p>Duradek Ultra Cork Espresso</p>  <p>Tamco Evergrain Decking Weathered Wood</p>  <p>Deck Rails Azek Premier Rail Kona</p>		

3500 Pickett Road

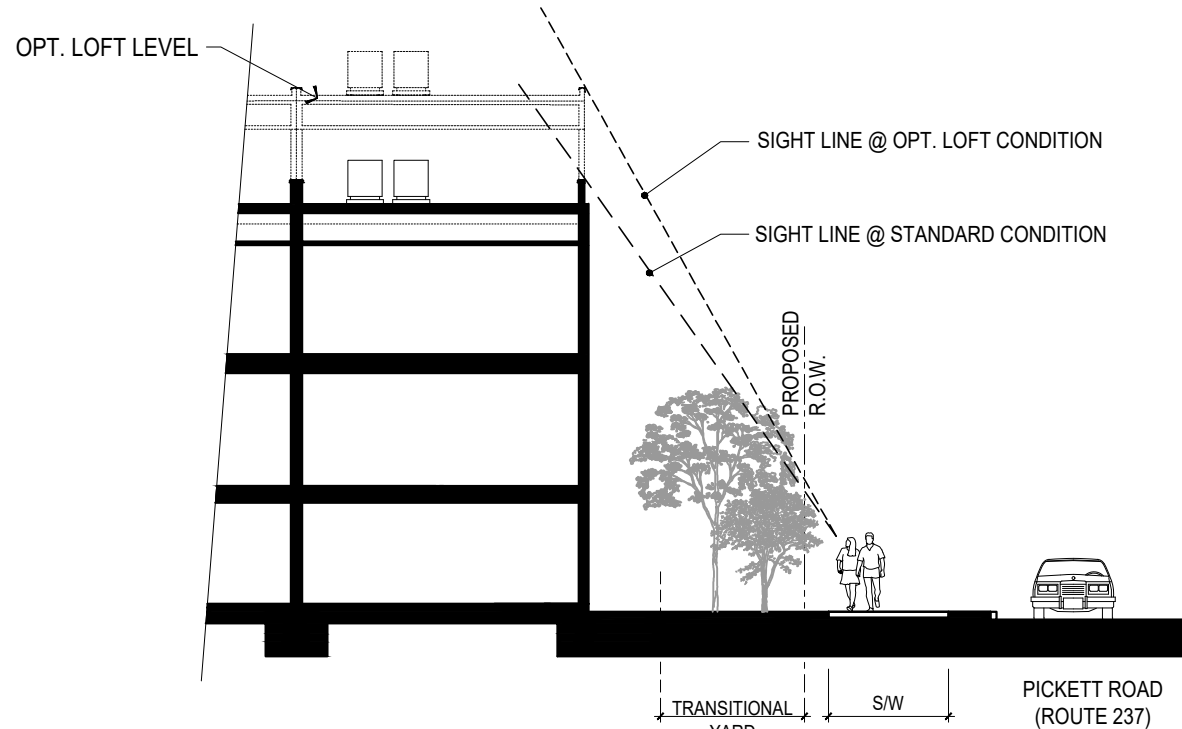
City of Fairfax, VA

<p>MASONRY</p>	<p>TRIM, SIDING, & DOORS</p>		
 <p>Glen Gery Brick Silverview Modular</p>  <p>Lehigh Mortar Tenn Buff</p>	 <p>Siding & Trim (Select Locations) Painted SW Color Mix - Brownstone</p>	 <p>Bay Siding & Trim, Doors & Frames Painted SW 7076 - Cyberspace</p>	 <p>Rear Siding (Select Locations) Painted SW 6086 - Sand Dune</p>
<p>WINDOWS</p>	<p>EXTERIOR ACCESSORIES</p>		
 <p>Window Frames (Typ.) Jeldwen Dark Bronze</p>  <p>Window Frames (At Select Rear Windows) Jeldwen White</p>	 <p>Cornice Painted SW 7675 - Sealskin</p>	 <p>HVAC Louvers Painted DE 6123 - Trail Dust</p>	 <p>Metals Jeldwen Dark Bronze</p>
<p>COLOR SCHEME 2</p>	<p>DECKING</p>  <p>Duradek Ultra Cork Espresso</p>  <p>Tamco Evergrain Decking Weathered Wood</p>  <p>Deck Rails Azek Premier Rail Kona</p>		

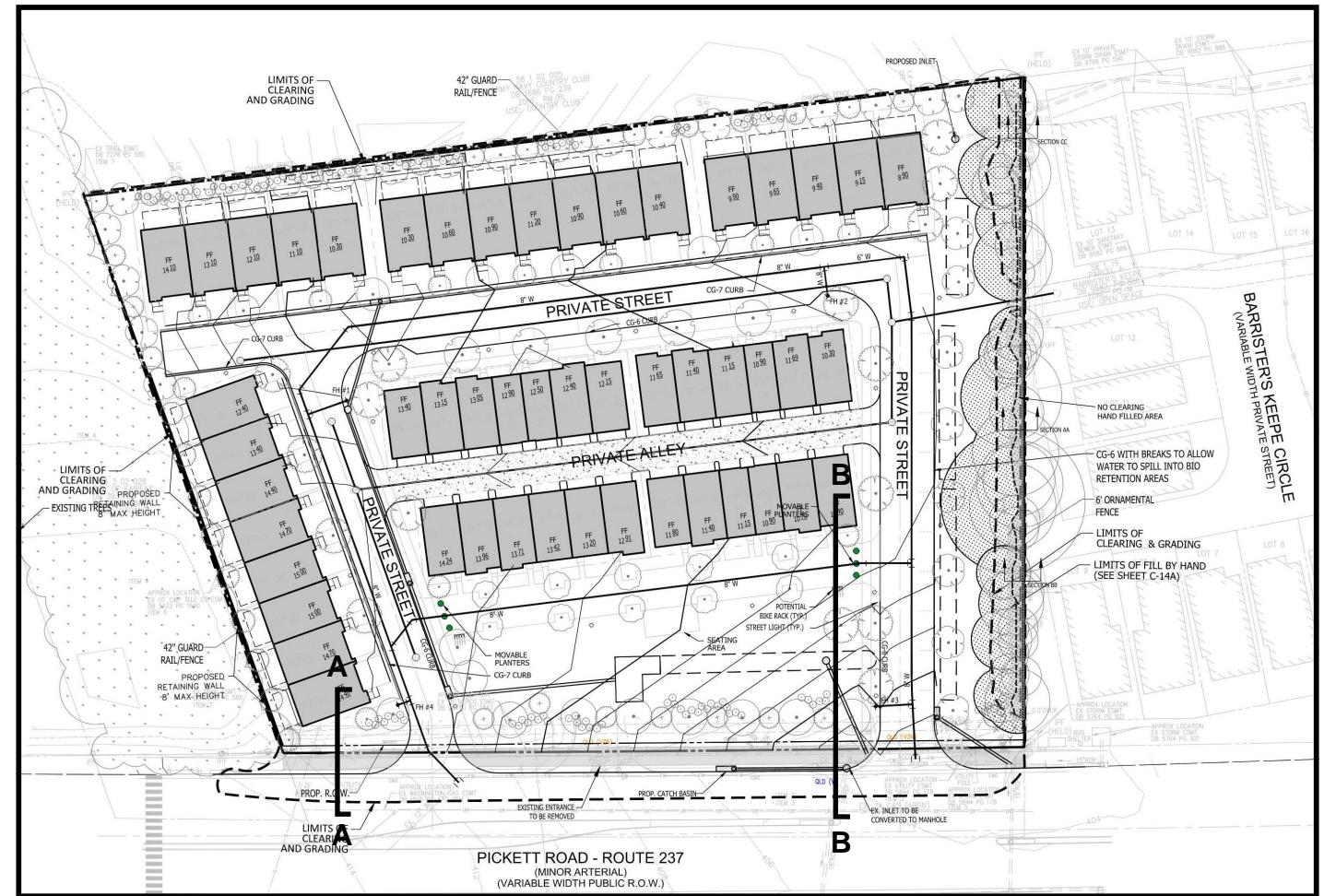
3500 Pickett Road

City of Fairfax, VA

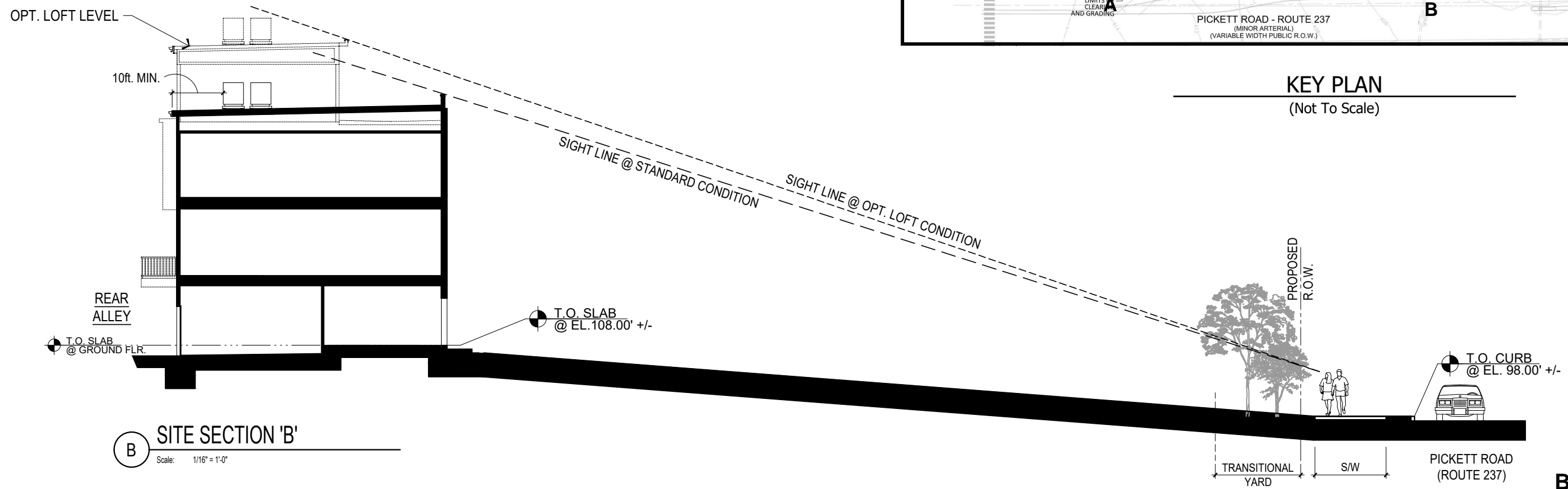
<p>MASONRY</p>	<p>TRIM, SIDING, & DOORS</p>		
 <p>Glen Gery Brick Madison Modular</p>  <p>Lehigh Mortar Tenn Buff</p>	 <p>Siding & Trim (Select Locations) Painted SW Color Mix - Brownstone</p>	 <p>Bay Siding & Trim, Doors & Frames Painted SW 2838 - Polished Mahogany</p>	 <p>Rear Siding (Select Locations) Painted SW 6086 - Sand Dune</p>
<p>WINDOWS</p>	<p>EXTERIOR ACCESSORIES</p>		
 <p>Window Frames (Typ.) Jeldwen Dark Bronze</p>  <p>Window Frames (At Select Rear Windows) Jeldwen White</p>	 <p>Cornice Painted SW 7675 - Sealskin</p>	 <p>HVAC Louvers Painted SW 2836 - Quartersawn Oak</p>	 <p>Metals Jeldwen Dark Bronze</p>
<p>COLOR SCHEME 3</p>	<p>DECKING</p>  <p>Duradek Ultra Cork Espresso</p>  <p>Tamco Evergrain Decking Weathered Wood</p>  <p>Deck Rails Azek Premier Rail Kona</p>		



A SITE SECTION 'A'
Scale: 1/16" = 1'-0"

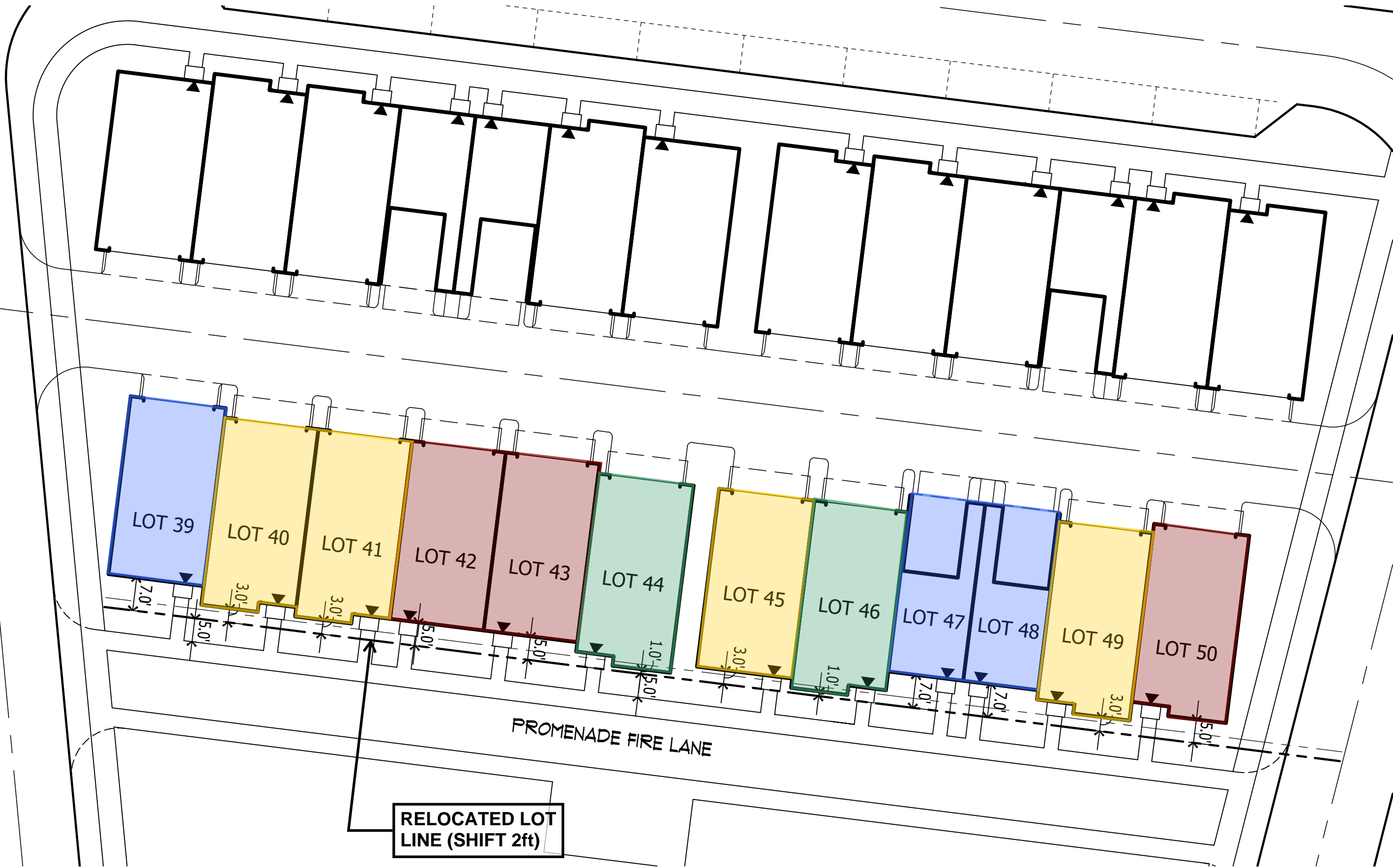


KEY PLAN
(Not To Scale)



B SITE SECTION 'B'
Scale: 1/16" = 1'-0"

BAR Supplemental Submission 4/28/20





OVERALL SITE PLAN

3500 PICKETT RD

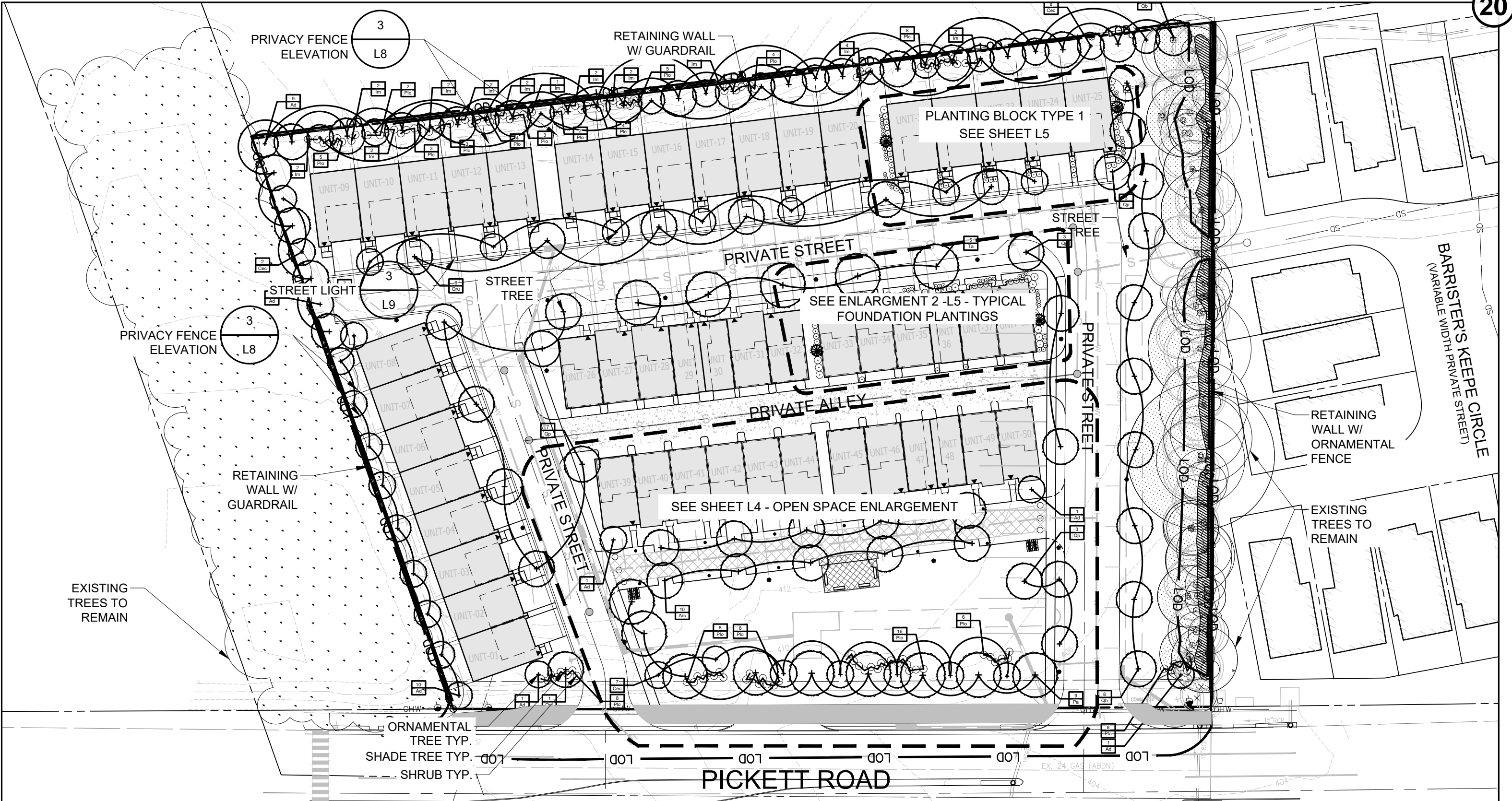
CITY OF FAIRFAX, VIRGINIA

SCALE: Viewport Scale

DATE:	04.22.2020	SHEET:	L1	OF:	9	SCALE:	1" = 50'-0"
-------	------------	--------	----	-----	---	--------	-------------



STUDIO39
 Landscape Architecture, P.C.
 6416 Grovedale Drive, Suite 100-A
 Alexandria, Virginia 22310
 Tel: 703.719.6500 Fax: 703.719.6503
 Email: frontdesk@studio39.com



OVERALL PLAN

3500 PICKETT RD

CITY OF FAIRFAX, VIRGINIA

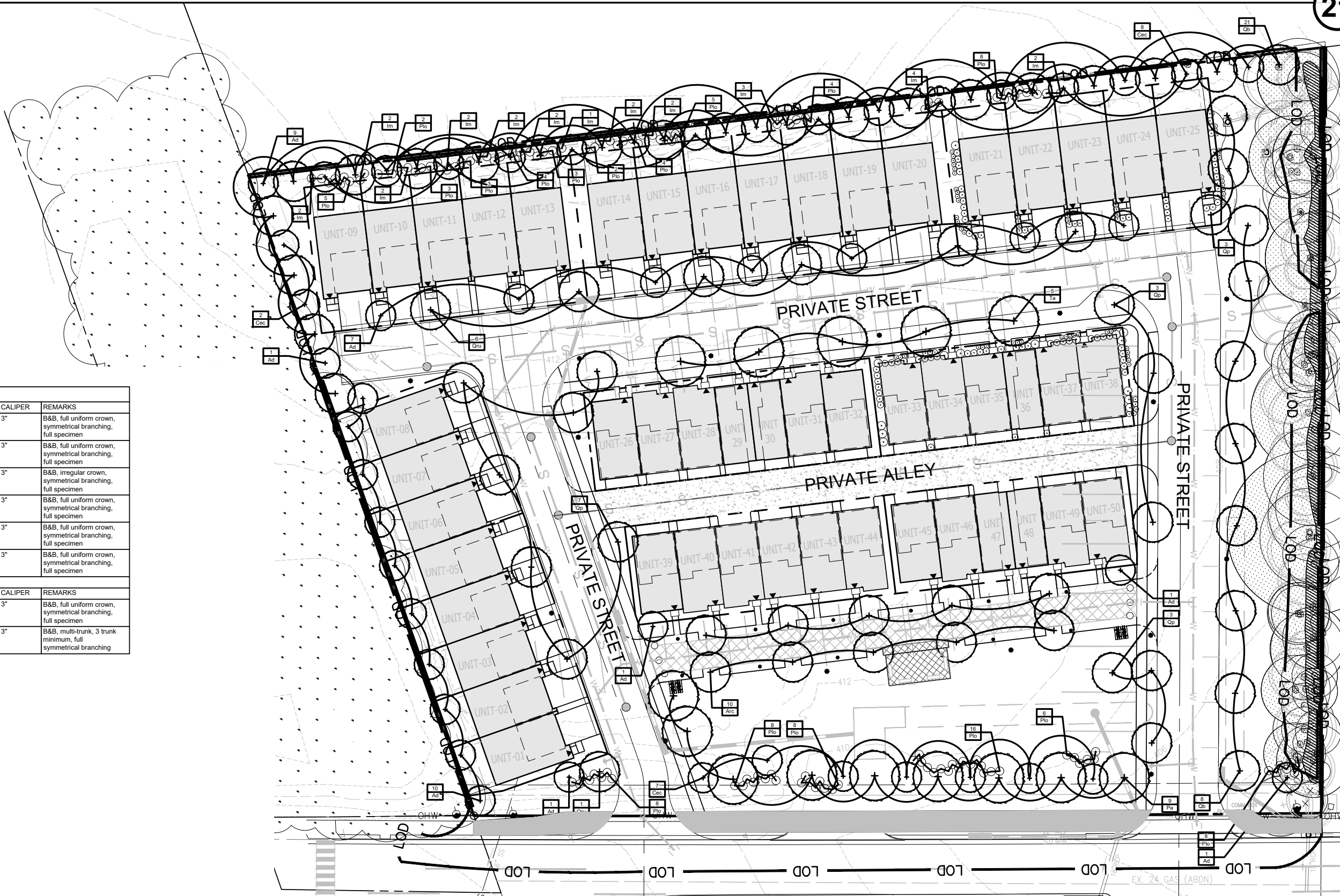
SCALE: Viewport Scale

DATE: 04.22.2020 SHEET: **L2** OF: **9** SCALE: 1" = 50'-0"



STUDIO39
 Landscape Architecture, P.C.
 6416 Grovedale Drive, Suite 100-A
 Alexandria, Virginia 22310
 Tel: 703.719.6500 Fax: 703.719.6503
 Email: frontdesk@studio39.com

PLANT SCHEDULE						
SHADE TREES	QTY	BOTANICAL NAME	COMMON NAME	HEIGHT	CALIPER	REMARKS
Arc	10	Acer rubrum 'Columnare'	Columnar Red Maple	14'-16'	3"	B&B, full uniform crown, symmetrical branching, full specimen
Pa	9	Platanus x acerifolia	London Plane Tree	14'-16'	3"	B&B, full uniform crown, symmetrical branching, full specimen
Ob	29	Quercus bicolor	Swamp White Oak	14'-16'	3"	B&B, irregular crown, symmetrical branching, full specimen
Op	16	Quercus phellos	Willow Oak	14'-16'	3"	B&B, full uniform crown, symmetrical branching, full specimen
Oru	7	Quercus rubra	Red Oak	14'-16'	3"	B&B, full uniform crown, symmetrical branching, full specimen
Ta	5	Tilia americana	American Linden	14'-16'	3"	B&B, full uniform crown, symmetrical branching, full specimen
UNDERSTORY TREES	QTY	BOTANICAL NAME	COMMON NAME	HEIGHT	CALIPER	REMARKS
Ad	31	Amelanchier arborea	Downy Serviceberry	8'-10'	3"	B&B, full uniform crown, symmetrical branching, full specimen
Cec	16	Cercis canadensis	Eastern Redbud	8'-10'	3"	B&B, multi-trunk, 3 trunk minimum, full symmetrical branching

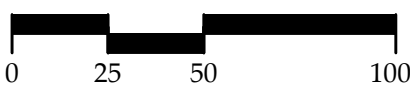


OVERALL TREE PLAN

3500 PICKETT RD

CITY OF FAIRFAX, VIRGINIA

SCALE: Viewport Scale



DATE: 04.22.2020

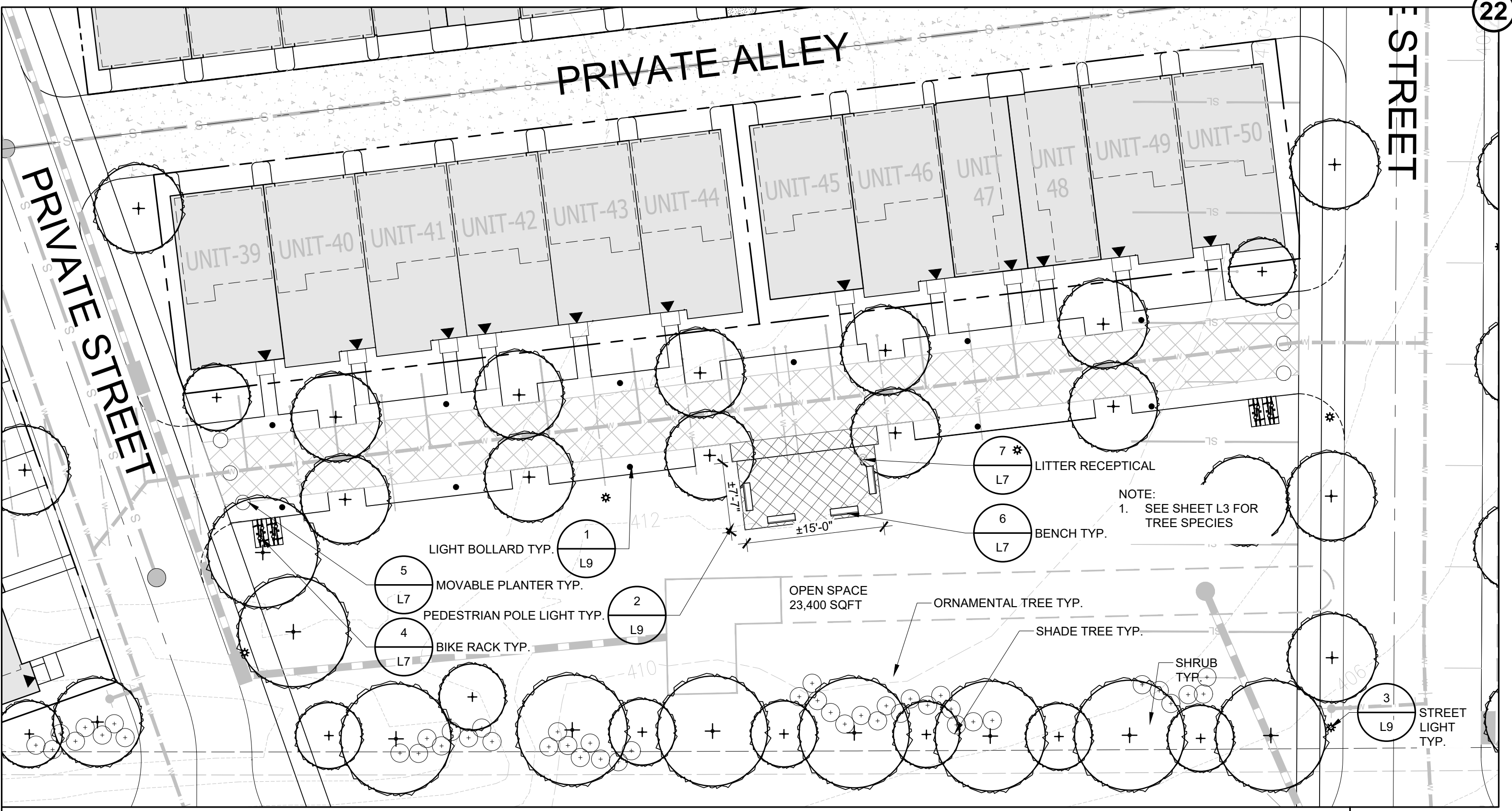
SHEET: L3

OF: 9

SCALE: 1" = 50'-0"

STUDIO39

Landscape Architecture, P.C.
 6416 Grovedale Drive, Suite 100-A
 Alexandria, Virginia 22310
 Tel: 703.719.6500 Fax: 703.719.6503
 Email: frontend@studio39.com



OPEN SPACE ENLARGEMENT

3500 PICKETT RD

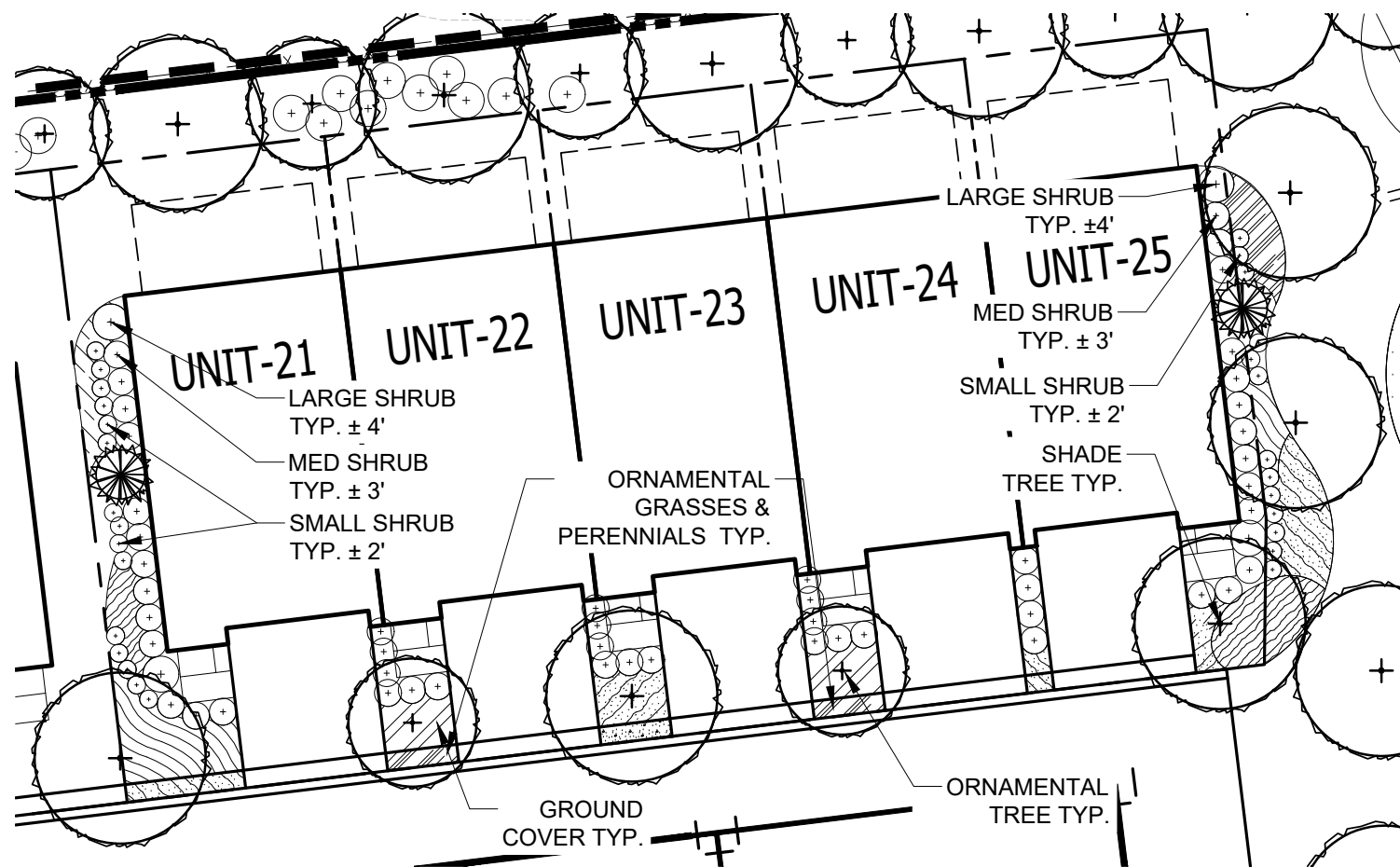
CITY OF FAIRFAX, VIRGINIA

SCALE: Viewport Scale



DATE:	04.22.2020	SHEET:	L4	OF:	9	SCALE:	1" = 20'-0"
-------	------------	--------	----	-----	---	--------	-------------

STUDIO39
 Landscape Architecture, P.C.
 6416 Grovedale Drive, Suite 100-A
 Alexandria, Virginia 22310
 Tel: 703.719.6500 Fax: 703.719.6503
 Email: frontdesk@studio39.com

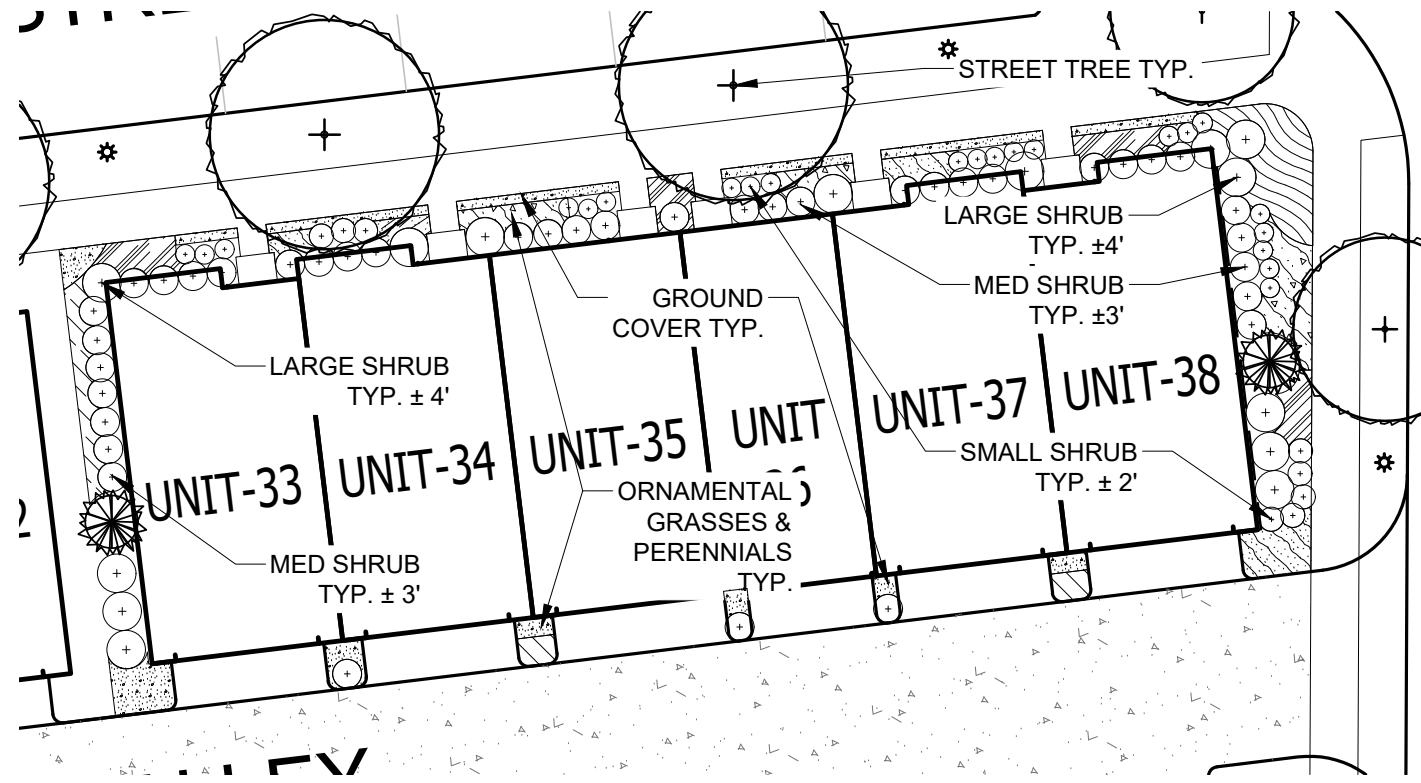


TYP. FOUNDATION LANDSCAPE PLAN -
FRONT LOAD UNITS

PLAN

1
L5

Scale: 1" = 20'-0"



TYP. FOUNDATION LANDSCAPE PLAN -
REAR LOAD UNITS

PLAN

2
L5

Scale: 1" = 20'-0"

NOTE:

-SEE PLANTING POOL ON PAGE L6.

-PLANTINGS ARE FOR ILLUSTRATIVE PURPOSES ONLY. PLANTINGS ARE SHOWN TO CONVEY DESIGN INTENT AND MASSING. FINAL LANDSCAPE DESIGN WILL BE DETERMINED BY BUILDING ARCHITECTURE, TOWNHOUSE WINDOW PLACEMENT AND HEIGHT, SUN EXPOSURE, FINAL GRADING AND OTHER ENVIRONMENTAL CONDITIONS.

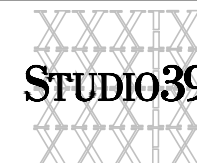
TYPICAL FOUNDATION PLANTINGS

3500 PICKETT RD

CITY OF FAIRFAX, VIRGINIA

SCALE: Viewport Scale

DATE: 04.22.2020 SHEET: L5 OF: 9 SCALE: 1" = 20'-0"



Landscape Architecture, P.C.
6416 Grovedale Drive, Suite 100-A
Alexandria, Virginia 22310
Tel: 703.719.6500 Fax: 703.719.6503
Email: frontend@studio39.com

PLANT POOL BLOCK TYPE 1							
SHADE TREES	BOTANICAL NAME	COMMON NAME	HEIGHT	CALIPER	SPREAD	INVASIVE	REMARKS
Qp	Quercus phellos	Willow Oak	14'-16'	3"			B&B, full uniform crown, symmetrical branching, full specimen
SHRUBS	BOTANICAL NAME	COMMON NAME	HEIGHT	SPREAD	SIZE	SPACING	REMARKS
Ago	Abelia x grandiflora 'Rose Creek'	Rose Creek Abelia	12"-15"	18"-24"	#2 cont.	3' o.c.	healthy vigorous, well-rooted & established in container
Alm	Aronia melanocarpa 'UCONNAM165' TM	Low Scape Mound Chokeberry	12"-24"	18"-24"	#3 cont.	2.5' o.c.	healthy, vigorous, well-rooted & established in container
Ajr	Aucuba japonica 'Rozannie'	Rozannie Japanese Aucuba	15"-18"	18"-24"	#2 cont.	3' o.c.	healthy vigorous, well-rooted & established in container
RGC	Azalea x 'Girard's Crimson'	Girard's Crimson Azalea	18"-24"	18"-24"	#3 cont.	3' o.c.	healthy, vigorous, well-rooted & established in container
Bmg	Buxus microphylla 'Green Mountain'	Green Mountain Boxwood	18"-24"	18"-24"	#3 cont.	3' o.c.	healthy vigorous, well-rooted & established in container
Bmi	Buxus microphylla 'Wintergreen'	Wintergreen Boxwood	18"-24"	18"-24"	#3 cont.	3' o.c.	healthy vigorous, well-rooted & established in container
Bd	Buxus sempervirens 'Dee Runk'	Dee Runk American Boxwood	36 - 42"	18"-24"	#5 cont.	2' o.c.	healthy, vigorous, well-rooted & established in container
Csk	Cornus sericea 'Kelsey'	Kelsey Dogwood	18"-24"	18"-24"	#3 cont.	2' o.c.	full specimen, healthy, vigorous, well-rooted and established
Dxy	Deutzia x 'NCDX1'	Yuki Snowflake Deutzia	18"-24"	18"-24"	#3 cont.	2.5' o.c.	healthy, vigorous, well-rooted & established in container
Fgm	Fothergilla gardenii 'Mt. Airy'	Dwarf Witchalder	18"-24"	18"-24"	#3 cont.	3' o.c.	healthy, vigorous, well-rooted & established in container
Haa	Hydrangea arborescens 'Annabelle'	Annabelle Smooth Hydrangea	18"-24"	18"-24"	#3 cont.	4' o.c.	healthy, vigorous, well-rooted & established in container
Hqp	Hydrangea quercifolia 'Pee Wee'	Oakleaf Hydrangea	18"-24"	18"-24"	#3 cont.	3' o.c.	healthy, vigorous, well-rooted & established in container
Igs	Ilex glabra 'Shamrock'	Inkberry	24"-30"	18"-24"	#3 cont.	3' o.c.	healthy, vigorous, well-rooted & established in container
Ivl	Itea virginica 'Little Henry'	Virginia Sweetspire	18"-24"	18"-24"	#3 cont.	2' o.c.	healthy, vigorous, well-rooted & established in container
Plo	Prunus laurocerasus 'Otto Luyken'	Luykens Laurel	18"-24"	18"-24"	#3 cont.	4' o.c.	healthy, vigorous, well-rooted & established in container
Pls	Prunus laurocerasus 'Schipkaensis'	Schipka Laurel	24"-30"	18"-24"	B&B	4' o.c.	healthy vigorous, well-rooted & established
PERENNIALS, ORNAMENTAL GRASSES AND FERNS	BOTANICAL NAME	COMMON NAME	CONT.	COLOR	SPACING	INVASIVE	REMARKS
Blm	Baptisia x 'Lemon Meringue' TM	Decadence Lemon Meringue False Indigo	1 qt.		36" o.c.		full specimen, healthy, vigorous, well-rooted and established
Cak	Calamagrostis x acutiflora 'Karl Foerster'	Feather Reed Grass	#1 cont.		18" o.c.		full specimen, healthy, vigorous, well-rooted and established
Cea	Carex elata 'Aurea'	Sedge	1 qt.		12" o.c.		full specimen, healthy, vigorous, well-rooted and established
Cve	Coreopsis verticillata	Tickseed	#1 cont.	yellow	18" o.c.		full specimen, healthy, vigorous, well-rooted and established
Lsc	Liriope spicata	Creeping Lily Turf	1 qt.		12" o.c.		full specimen, healthy, vigorous, well-rooted and established
Nfw	Nepeta x faassenii 'Walkers Low'	Walkers Low Catmint	#1 cont.	blue	16" o.c.		full specimen, healthy, vigorous, well-rooted and established
PaH	Pennisetum alopecuroides 'Hameln'	Hameln Dwarf Fountain Grass	#3 cont.		18" o.c.		full specimen, healthy, vigorous, well-rooted and established
PAL	Perovskia atriplicifolia 'Little Spire'	Little Spire Russian Sage	#1 cont.	blue	24" o.c.		full specimen, healthy, vigorous, well-rooted and established

PLANT POOL BLOCK TYPE 2							
SHADE TREES	BOTANICAL NAME	COMMON NAME	HEIGHT	CALIPER	SPREAD	INVASIVE	REMARKS
Qp	Quercus phellos	Willow Oak	14'-16'	3"			B&B, full uniform crown, symmetrical branching, full specimen
Qru	Quercus rubra	Red Oak	14'-16'	3"			B&B, full uniform crown, symmetrical branching, full specimen
UNDERSTORY TREES	BOTANICAL NAME	COMMON NAME	HEIGHT	CALIPER	SPREAD	INVASIVE	REMARKS
Ad	Amelanchier arborea	Downy Serviceberry	8'-10'	3"			B&B, full uniform crown, symmetrical branching, full specimen
SHRUBS	BOTANICAL NAME	COMMON NAME	HEIGHT	SPREAD	SIZE	SPACING	REMARKS
Ago	Abelia x grandiflora 'Rose Creek'	Rose Creek Abelia	12"-15"	18"-24"	#2 cont.	3' o.c.	healthy vigorous, well-rooted & established in container
Alm	Aronia melanocarpa 'UCONNAM165' TM	Low Scape Mound Chokeberry	12"-24"	18"-24"	#3 cont.	2.5' o.c.	healthy, vigorous, well-rooted & established in container
Bmw	Buxus microphylla 'Winter Gem'	Globe Winter Gem Boxwood	18"-24"	18"-24"	#3 cont.	4' o.c.	healthy vigorous, well-rooted & established in container
Bmi	Buxus microphylla 'Wintergreen'	Wintergreen Boxwood	18"-24"	18"-24"	#3 cont.	3' o.c.	healthy vigorous, well-rooted & established in container
Bd	Buxus sempervirens 'Dee Runk'	Dee Runk American Boxwood	36 - 42"	18"-24"	#5 cont.	2' o.c.	healthy, vigorous, well-rooted & established in container
Cbb	Caryopteris x clandonensis 'Korball'	Blue Balloon Bluebeard	24"-30"	24"-30"	#3 cont.		healthy, vigorous, well-rooted & established in container
Csk	Cornus sericea 'Kelsey'	Kelsey Dogwood	18"-24"	18"-24"	#3 cont.	2' o.c.	full specimen, healthy, vigorous, well-rooted and established
Fgm	Fothergilla gardenii 'Mt. Airy'	Dwarf Witchalder	18"-24"	18"-24"	#3 cont.	3' o.c.	healthy, vigorous, well-rooted & established in container
Haa	Hydrangea arborescens 'Annabelle'	Annabelle Smooth Hydrangea	18"-24"	18"-24"	#3 cont.	4' o.c.	healthy, vigorous, well-rooted & established in container
Igs	Ilex glabra 'Shamrock'	Inkberry	24"-30"	18"-24"	#3 cont.	3' o.c.	healthy, vigorous, well-rooted & established in container
Ivl	Itea virginica 'Little Henry'	Virginia Sweetspire	18"-24"	18"-24"	#3 cont.	2' o.c.	healthy vigorous, well-rooted & established in container
PERENNIALS, ORNAMENTAL GRASSES AND FERNS	BOTANICAL NAME	COMMON NAME	CONT.	COLOR	SPACING	INVASIVE	REMARKS
Ats	Amsonia tabernaemontana salicifolia	Bluestar	#1 cont.		24" o.c.		full specimen, healthy, vigorous, well-rooted and established
Blm	Baptisia x 'Lemon Meringue' TM	Decadence Lemon Meringue False Indigo	1 qt.		36" o.c.		full specimen, healthy, vigorous, well-rooted and established
Cea	Carex elata 'Aurea'	Sedge	1 qt.		12" o.c.		full specimen, healthy, vigorous, well-rooted and established
Cve	Coreopsis verticillata	Tickseed	#1 cont.	yellow	18" o.c.		full specimen, healthy, vigorous, well-rooted and established
Lsp	Liatis spicata	Spike Gayfeather	#1 cont.	purple	8" o.c.		full specimen, healthy, vigorous, well-rooted and established
Lsc	Liriope spicata	Creeping Lily Turf	1 qt.		12" o.c.		full specimen, healthy, vigorous, well-rooted and established
Nfw	Nepeta x faassenii 'Walkers Low'	Walkers Low Catmint	#1 cont.	blue	16" o.c.		full specimen, healthy, vigorous, well-rooted and established
PaH	Pennisetum alopecuroides 'Hameln'	Hameln Dwarf Fountain Grass	#3 cont.		18" o.c.		full specimen, healthy, vigorous, well-rooted and established
Vrc	Veronica spicata 'Royal Candles'	Spike Speedwell	1 qt.		10" o.c.		full specimen, healthy, vigorous, well-rooted and established

PLANTING POOL

3500 PICKETT RD

CITY OF FAIRFAX, VIRGINIA

SCALE AS SHOWN



DATE: 04.22.2020 SHEET: L6 OF: 9 SCALE: SCALE AS SHOWN

STUDIO39

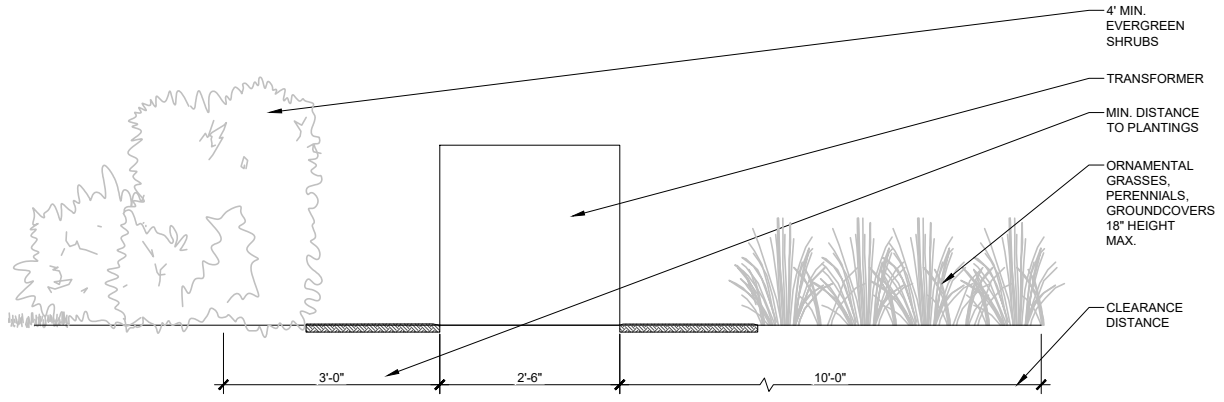
 Landscape Architecture, P.C.

 6416 Grovedale Drive, Suite 100-A

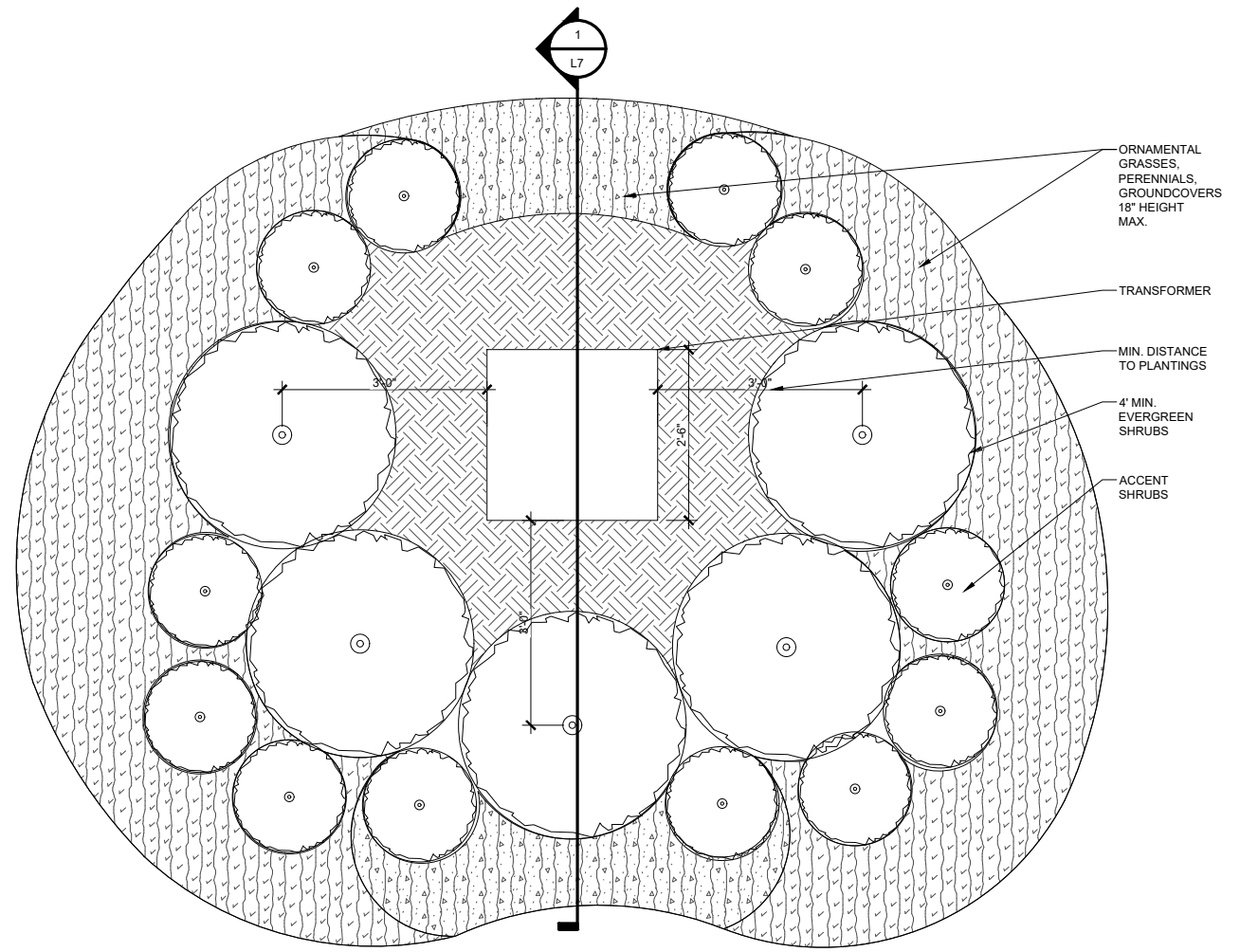
 Alexandria, Virginia 22310

 Tel: 703.719.6500 Fax: 703.719.6503

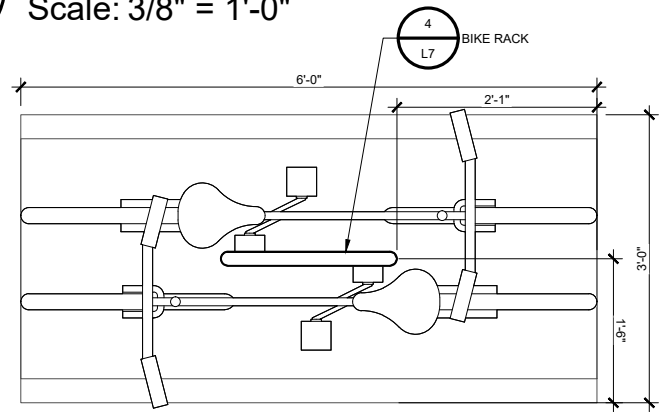
 Email: frontdesk@studio39.com



1 TRANSFORMER SCREEN SECTION SECTION
 Scale: 3/8" = 1'-0"



2 TRANSFORMER SCREEN PLAN SECTION
 Scale: 3/8" = 1'-0"



3 BIKE RACK LAYOUT SECTION
 Scale: 1/2" = 1'-0"



MODEL #: BRWS-101 OR APPROVED EQUAL
 DESCRIPTION: SINGLE WIDE LOOP BIKE RACK CONSTRUCTED OF 2 1/2" OD SCHEDULE 40 TUBULAR STEEL PIPE
 COLOR/FINISH: TBD
 QUANTITY: PER PLAN
 COMPANY: VICTOR STANLEY
 P.O. DRAWER 330
 DUNKIRK, MD 20754
 www.victorstanley.com
 CONTACT: CLAIRE COOLIDGE
 P: 301.855.8300
 F: 410.257.7579

NOTES:
 1) INSTALL PER MANUFACTURER'S RECOMMENDATIONS AND GOVERNING MUNICIPAL REQUIREMENTS.
 2) CONTRACTOR TO VERIFY QUANTITIES.



MODEL: SQUARE SERIES PRECAST CONCRETE PLANTER OR APPROVED EQUAL
 SIZE: TBD
 COLOR: TBD
 QUANTITY: PER PLAN
 COMPANY: LANDSCAPE FORMS - KORNEGAY DESIGN
 7800 E/ MICHIGAN AVE.
 KALAMAZOO, MI 49048
 (P) 800.430.6209
 NOTES: 1)INSTALL PER MANUFACTURER'S RECOMMENDATIONS 2)CONTRACTOR TO VERIFY QUANTITIES



MODEL: NEOLIVIANO BENCH 69" BACKED OR APPROVED EQUAL
 SIZE: 27" X 69" X 31"
 COLOR: TBD
 QUANTITY: PER PLAN
 COMPANY: LANDSCAPE FORMS
 7800 E/ MICHIGAN AVE.
 KALAMAZOO, MI 49048
 (P) 800.430.6209
 NOTES: 1)INSTALL PER MANUFACTURER'S RECOMMENDATIONS 2)CONTRACTOR TO VERIFY QUANTITIES



MODEL: LAKESIDE LITTER - GRASS TOP OPEN LITTER RECEPTICAL OR APPROVED EQUAL
 MODEM: TBD
 SIZE: 21" X 36" X 35 GAL.
 COLOR: TBD
 QUANTITY: PER PLAN
 COMPANY: LANDSCAPE FORMS
 7800 E/ MICHIGAN AVE.
 KALAMAZOO, MI 49048
 (P) 800.430.6209
 NOTES: 1)INSTALL PER MANUFACTURER'S RECOMMENDATIONS 2)CONTRACTOR TO VERIFY QUANTITIES

4 BIKE RACK PROD. INFO.
 Scale: NTS

5 MOVABLE PLANTER PROD. INFO.
 Scale: NTS

6 BENCH PROD. INFO.
 Scale: NTS

7 LITTER RECEPTICAL PROD. INFO.
 Scale: NTS

HARDSCAPE DETAILS

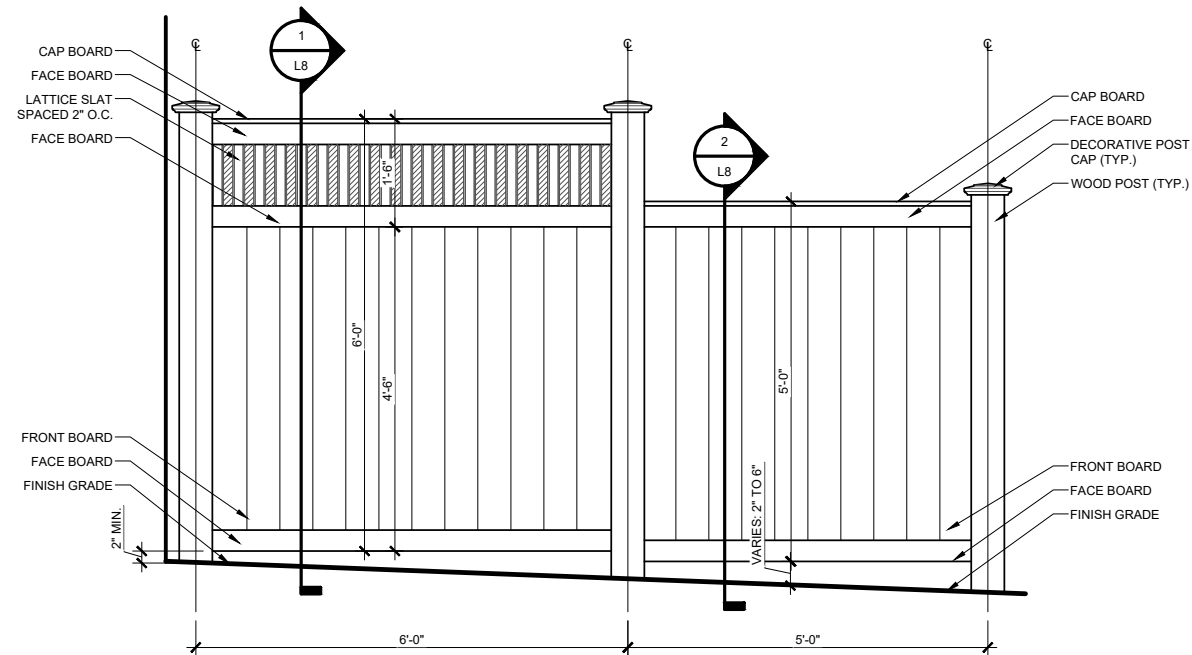
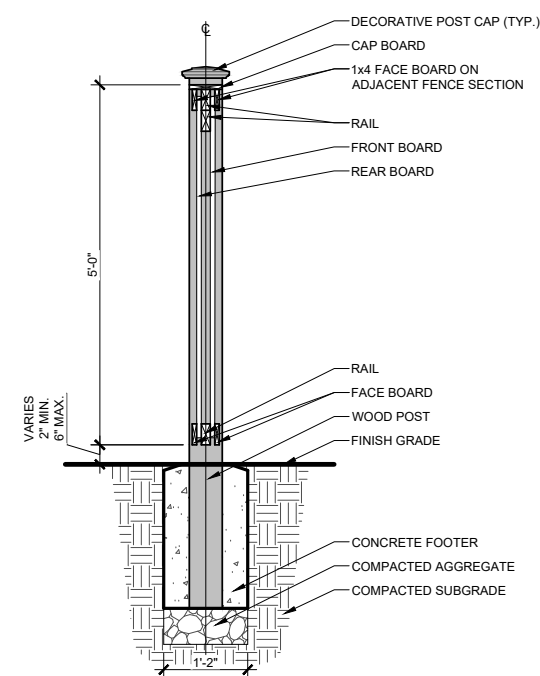
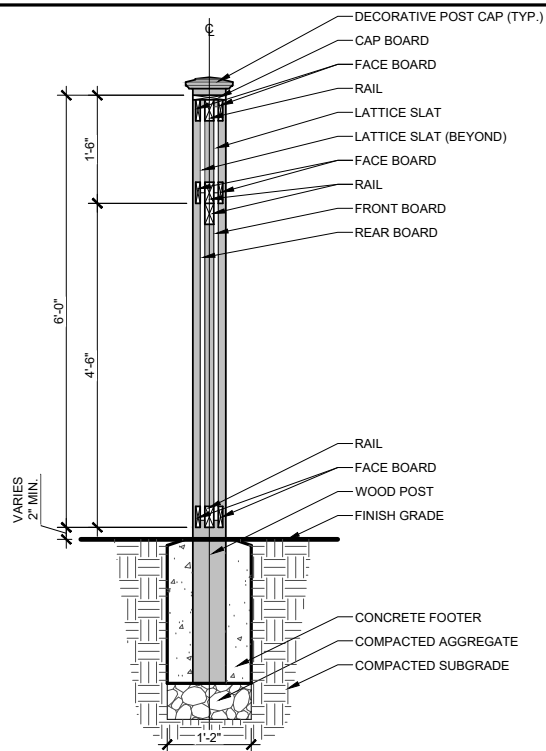
3500 PICKETT RD

CITY OF FAIRFAX, VIRGINIA

SCALE AS SHOWN



STUDIO39
 Landscape Architecture, P.C.
 6416 Grovedale Drive, Suite 100-A
 Alexandria, Virginia 22310
 Tel: 703.719.6500 Fax: 703.719.6503
 Email: frontdesk@studio39.com

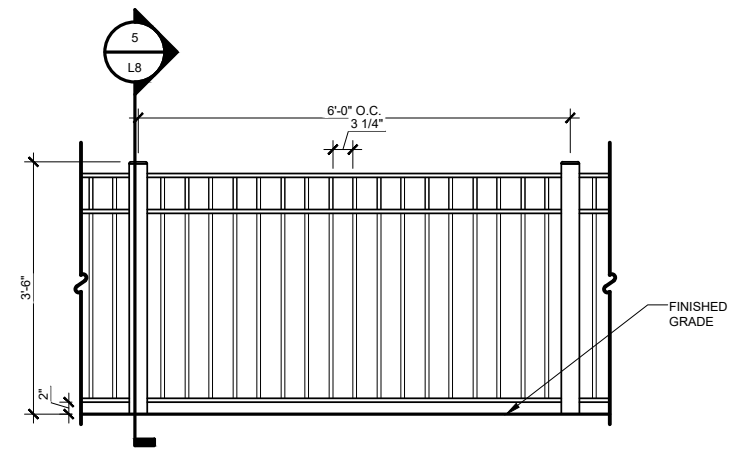
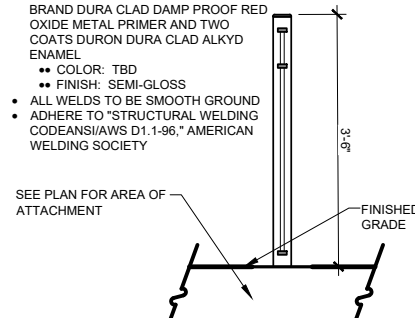


1 PRIVACY FENCE SECTION A
L8 Scale: 3/8" = 1'-0"

2 PRIVACY FENCE SECTION B
L8 Scale: 3/8" = 1'-0"

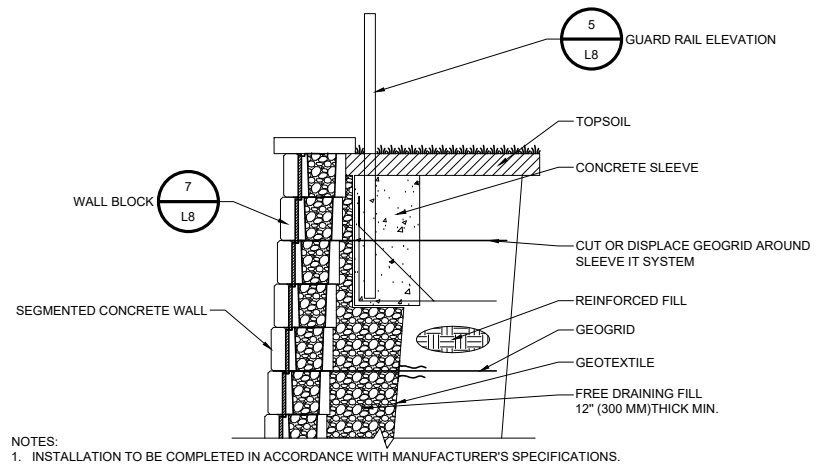
3 PRIVACY FENCE ELEVATION
L8 Scale: 3/8" = 1'-0"

- METAL NOTES:**
- ALL RUST ON MEMBERS TO BE REMOVED WITH WIRE BRUSH AND ELEMENTS CLEANED PRIOR TO PRIMING. ELEMENTS TO BE PRIMED IMMEDIATELY AFTER CLEANING
 - ALL RAILING MEMBERS TO BE PAINTED WITH TWO COATS DURON BRAND DURA CLAD DAMP PROOF RED OXIDE METAL PRIMER AND TWO COATS DURON DURA CLAD ALKYD ENAMEL
 - COLOR: TBD
 - FINISH: SEMI-GLOSS
 - ALL WELDS TO BE SMOOTH GROUND
 - ADHERE TO "STRUCTURAL WELDING CODES/ANSI/AWS D1.1-96," AMERICAN WELDING SOCIETY



4 GUARD RAIL SECTION
L8 Scale: 3/8" = 1'-0"

5 GUARD RAIL ELEVATION
L8 Scale: 3/8" = 1'-0"



NOTES:
1. INSTALLATION TO BE COMPLETED IN ACCORDANCE WITH MANUFACTURER'S SPECIFICATIONS.

6 RETAINING WALL WITH GUARD RAIL SECTION
L8 Scale: 3/8" = 1'-0"



MODEL: SEMMA WALL BLOCK OR APPROVED EQUAL
SIZE: 5 7/8" X 16"
COLOR: TBD
QUANTITY: PER PLAN
COMPANY: TECHO-BLOC
5255 ALBERT-MILLICHAMP,
ST-HUBERT, QC J3Y 8Z8
(P) 877.832.4625
CONTACT: MIKE NADOLSKI
P) 703.393.2828.231
C) 703.853.9048
mike@stoneva.com
NOTES: 1)INSTALL PER MANUFACTURER'S RECOMMENDATIONS
2)CONTRACTOR TO VERIFY QUANTITIES

7 WALL BLOCK PROD. INFO.
L8 Scale: NTS

HARDSCAPE DETAILS

3500 PICKETT RD

CITY OF FAIRFAX, VIRGINIA

SCALE AS SHOWN



DATE:	04.22.2020	SHEET:	L8	OF:	9	SCALE:	SCALE AS SHOWN
-------	------------	--------	----	-----	---	--------	----------------

STUDIO39
Landscape Architecture, P.C.
6416 Grovedale Drive, Suite 100-A
Alexandria, Virginia 22310
Tel: 703.719.6500 Fax: 703.719.6503
Email: frontdesk@studio39.com



MODEL: 84 063 LIGHT BOLLARD - LED SQUARE OR APPROVED EQUAL
 COLOR: BLACK
 SIZE: 39 1/2" H x 6 1/2" W
 QUANTITY: PER PLAN
 COMPANY: BEGA
 1000 BEGA WAY
 CARPINTERIA, CA 93013
 (P) 805.566.9474
 CONTACT: LIGHTING ENVIRONMENTS
 DEVIN CREHAN
 (P) 410.712.0239
 NOTES: 1)INSTALL PER MANUFACTURER'S RECOMMENDATIONS
 2)CONTRACTOR TO PROVIDE ALL CONDUIT, WIRING, PERMITS, ETC TO INSTALL
 3)COORDINATE POWER CONNECTION W/ OWNER



MODEL: 84 065 LIGHT ELEMENT - LED SQUARE OR APPROVED EQUAL
 COLOR: BLACK
 SIZE: 177" H x 8 1/2" W
 QUANTITY: PER PLAN
 COMPANY: BEGA
 1000 BEGA WAY
 CARPINTERIA, CA 93013
 (P) 805.566.9474
 CONTACT: LIGHTING ENVIRONMENTS
 DEVIN CREHAN
 (P) 410.712.0239
 NOTES: 1)INSTALL PER MANUFACTURER'S RECOMMENDATIONS
 2)CONTRACTOR TO PROVIDE ALL CONDUIT, WIRING, PERMITS, ETC TO INSTALL
 3)COORDINATE POWER CONNECTION W/ OWNER



MSRP- G2 LED TYPE III POST TOP W/ RA61 POLE OR APPROVED EQUAL
 COLOR: BLACK
 SIZE: FIXTURE: 27 1/4" H x 23" W
 POLE: 14"H
 QUANTITY: PER PLAN
 COMPANY: SIGNIFY
 200 FRANKLIN SQUARE DRIVE,
 SOMERSET, NJ 08873
 P: 855-486-2216
 CONTACT: LIGHTING ENVIRONMENTS
 DEVIN CREHAN
 (P) 410.712.0239
 NOTES: 1)INSTALL PER MANUFACTURER'S RECOMMENDATIONS
 2)CONTRACTOR TO PROVIDE ALL CONDUIT, WIRING, PERMITS, ETC TO INSTALL
 3)COORDINATE POWER CONNECTION W/ OWNER

1 LIGHT BOLLARD PROD. INFO.
 L9 Scale: NTS

2 PEDESTRIAN POLE LIGHT PROD. INFO.
 L9 Scale: NTS

3 STREET LIGHT PROD. INFO.
 L9 Scale: NTS

LIGHTING PRODUCT INFORMATION

3500 PICKETT RD

CITY OF FAIRFAX, VIRGINIA

SCALE AS SHOWN



DATE: 04.22.2020 SHEET: L9 OF: 9 SCALE: SCALE AS SHOWN

STUDIO39
 Landscape Architecture, P.C.
 6416 Grovedale Drive, Suite 100-A
 Alexandria, Virginia 22310
 Tel: 703.719.6500 Fax: 703.719.6503
 Email: frontdesk@studio39.com

BAR Submission for May 6, 2020 Hearing

3500 Pickett Rd

Submission Date: April 22, 2020

