



CITY OF FAIRFAX

DEPARTMENT OF PUBLIC WORKS

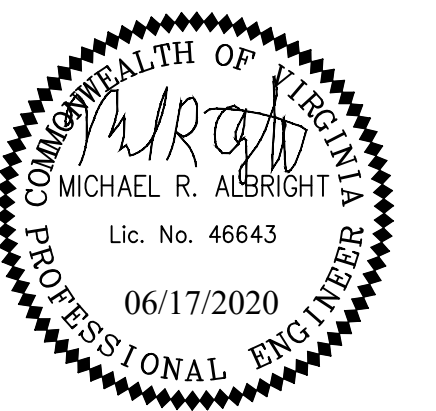
Transportation Division  
10455 Armstrong St. Room 200A  
Fairfax, VA 22030

Phone: 703-385-7889

**KimleyHorn**

© 2018 KIMLEY-HORN AND ASSOCIATES, INC.  
11400 Commerce Park Drive  
Suite 400  
Reston, Virginia  
20191  
Phone: 703-674-1300  
Fax: 703-674-1350

Seal



Revisions	Date
ENGINEERS DIRECTIVE NO. 26	09/25/2020

DESIGNED BY  
DRAWN BY  
CHECKED BY

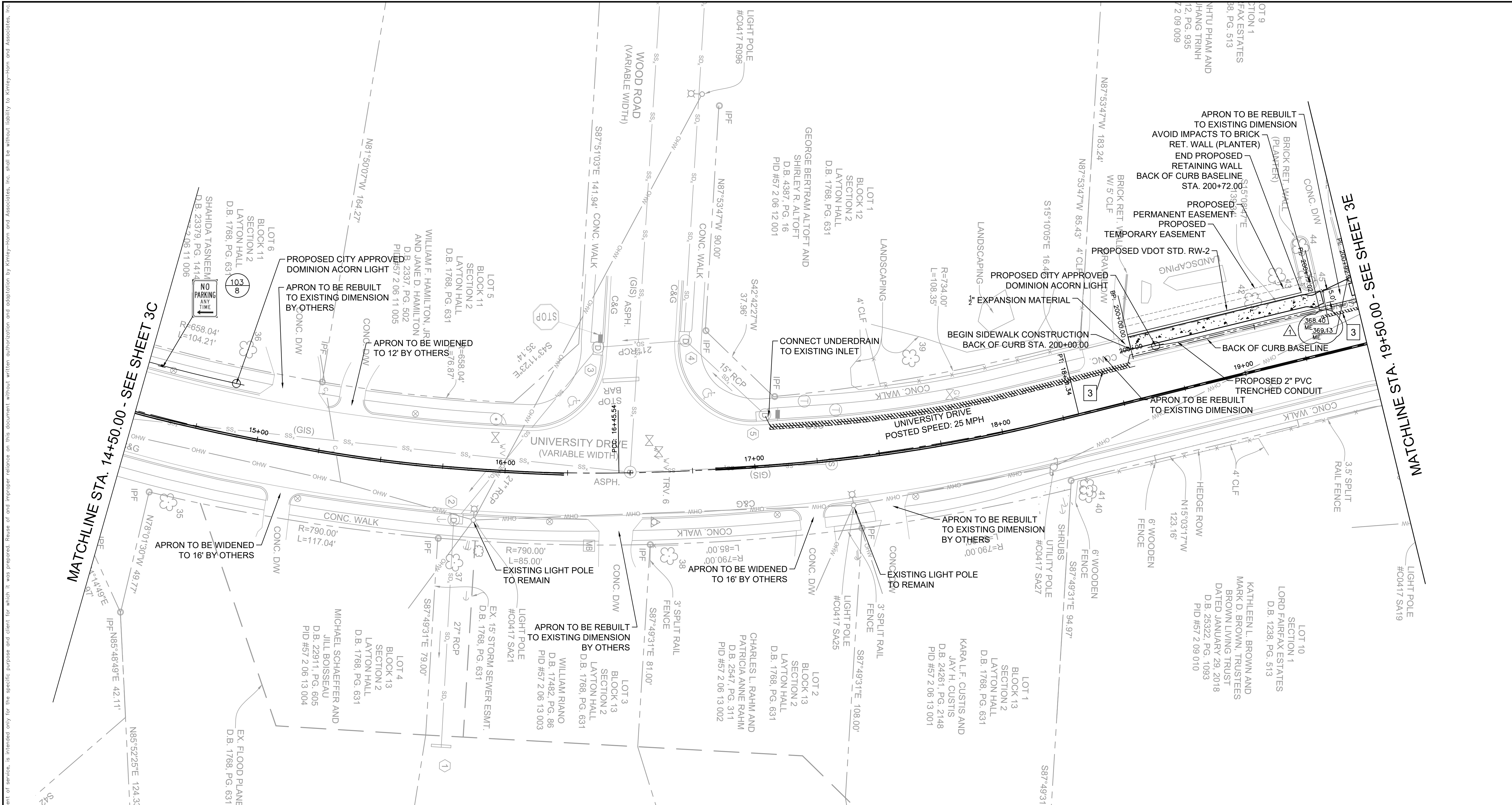
CITY OF FAIRFAX, VIRGINIA  
DEPARTMENT OF PUBLIC WORKS

**UNIVERSITY DRIVE TRAFFIC CALMING  
KENMORE DRIVE TO STRATFORD AVENUE  
CONSTRUCTION PLAN AND INTERIM PAVEMENT MARKINGS**

UPC # 113121

SCALE  
SEE GRAPHIC  
SCALE

SHEET  
**3D**

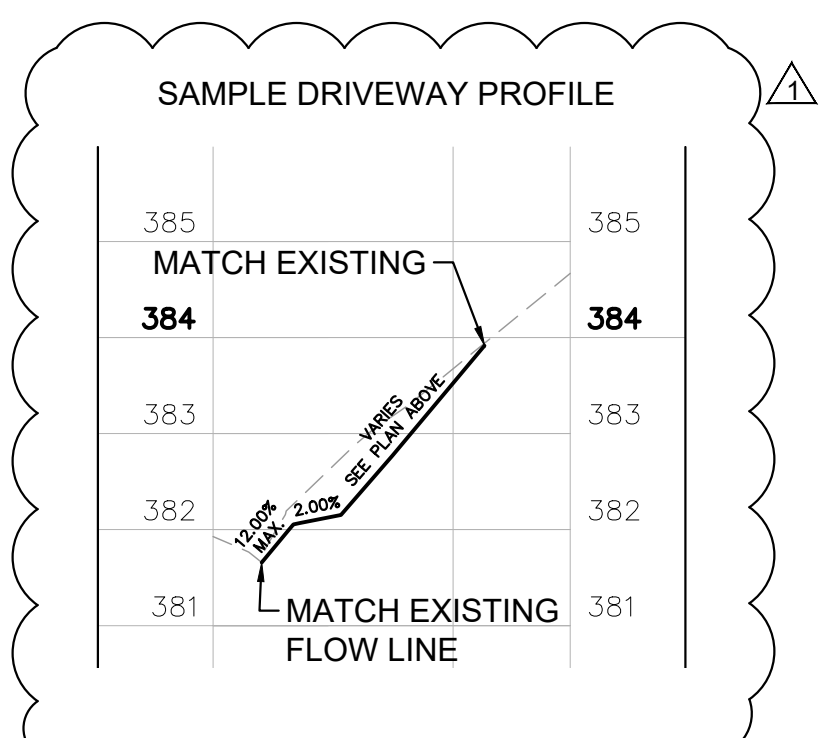
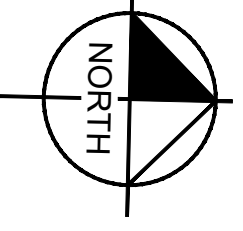
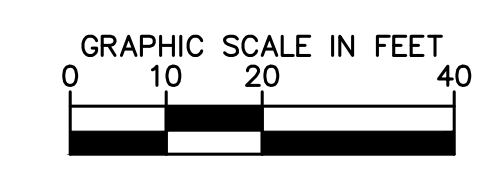
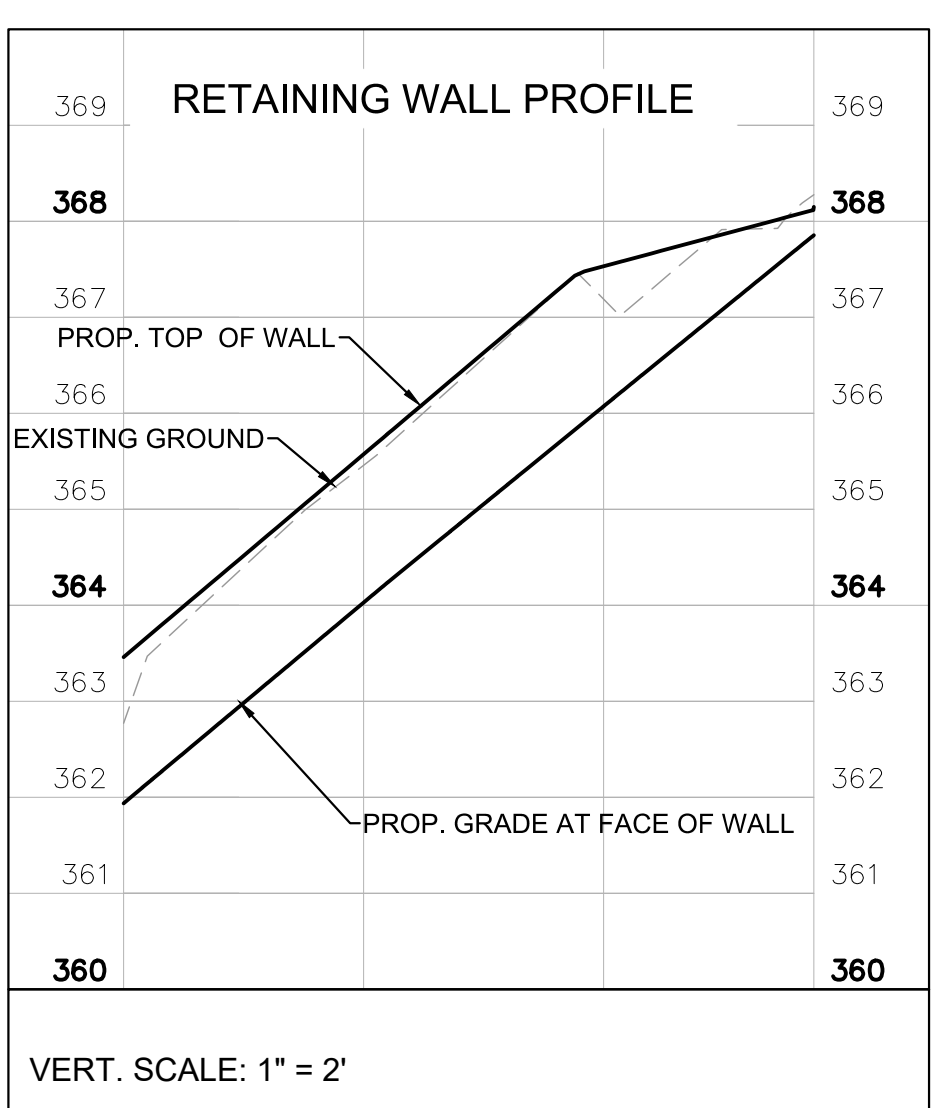


- LEGEND**
- 1 SAWCUT AND CONNECT TO EXISTING SIDEWALK
  - 2 SAWCUT AND CONNECT TO EXISTING CURB AND GUTTER
  - 3 SAWCUT EXISTING FULL DEPTH ASPHALT PAVEMENT
  - 4 PROPOSED VDOT STD' D CG-12 TYPE A CURB RAMP
  - 5 PROPOSED VDOT STD' D CG-12 TYPE B CURB RAMP
  - 6 PROPOSED VDOT STD' D CG-2
  - PROPOSED PERMANENT EASEMENT
  - - - PROPOSED TEMPORARY EASEMENT
  - - - LIMITS OF DISTURBANCE
  - - - PROPOSED SAWCUT
  - - - PROPOSED STD. UD-4
  - ▨ PROPOSED CONCRETE
  - ▨ PROPOSED FULL DEPTH PAVEMENT
  - ▨ PROPOSED SEED AND STRAW

- TEMPORARY PAVEMENT MARKING LEGEND**
- (A) TYPE F, YELLOW, 4" WIDTH, 4" SPACE
  - (B) TYPE F, WHITE, 4" WIDTH
  - (C) TYPE F, WHITE, 6" WIDTH
  - (D) TYPE F, WHITE, 24" WIDTH
  - (E) ERADICATE EXISTING PAVEMENT MARKINGS
  - (F) TIE TO EXISTING PAVEMENT MARKINGS

**NOTES:**

- DRIVEWAYS TO BE WIDENED TO DIMENSIONS NOTED ON PLAN AND ACCORDING TO DETAIL ON GENERAL NOTES SHEET 2B. DRIVEWAYS TO BE REBUILT TO EXISTING FLOW LINE.
- DRIVEWAYS TO BE WIDENED WITH HIGH EARLY STRENGTH CONCRETE
- GRADE AROUND PROPOSED ASPHALT AND CURB RAMPS TO ENSURE POSITIVE DRAINAGE.
- DO NOT DISTURB EXISTING STORM DRAIN INLETS UNLESS OTHERWISE NOTED ON PLAN.



This document, together with the concepts and designs presented herein, as an instrument of service, is intended only for the specific purpose and client for which it was prepared. Reuse of and improper reliance on this document without written authorization and adaptation by Kimley-Horn and Associates, Inc. shall be without liability to Kimley-Horn and Associates, Inc.



**CITY OF FAIRFAX**  
 DEPARTMENT OF PUBLIC WORKS  
 Transportation Division  
 10455 Armstrong St. Room 200A  
 Fairfax, VA 22030  
 Phone: 703-385-7889



© 2018 KIMLEY-HORN AND ASSOCIATES, INC.  
 11400 Commerce Park Drive  
 Suite 400  
 Reston, Virginia  
 20191  
 Phone: 703-674-1300  
 Fax: 703-674-1350



Revisions	Date
▲ ENGINEERS DIRECTIVE NO. 26	09/25/2020

DESIGNED BY  
 DRAWN BY  
 CHECKED BY

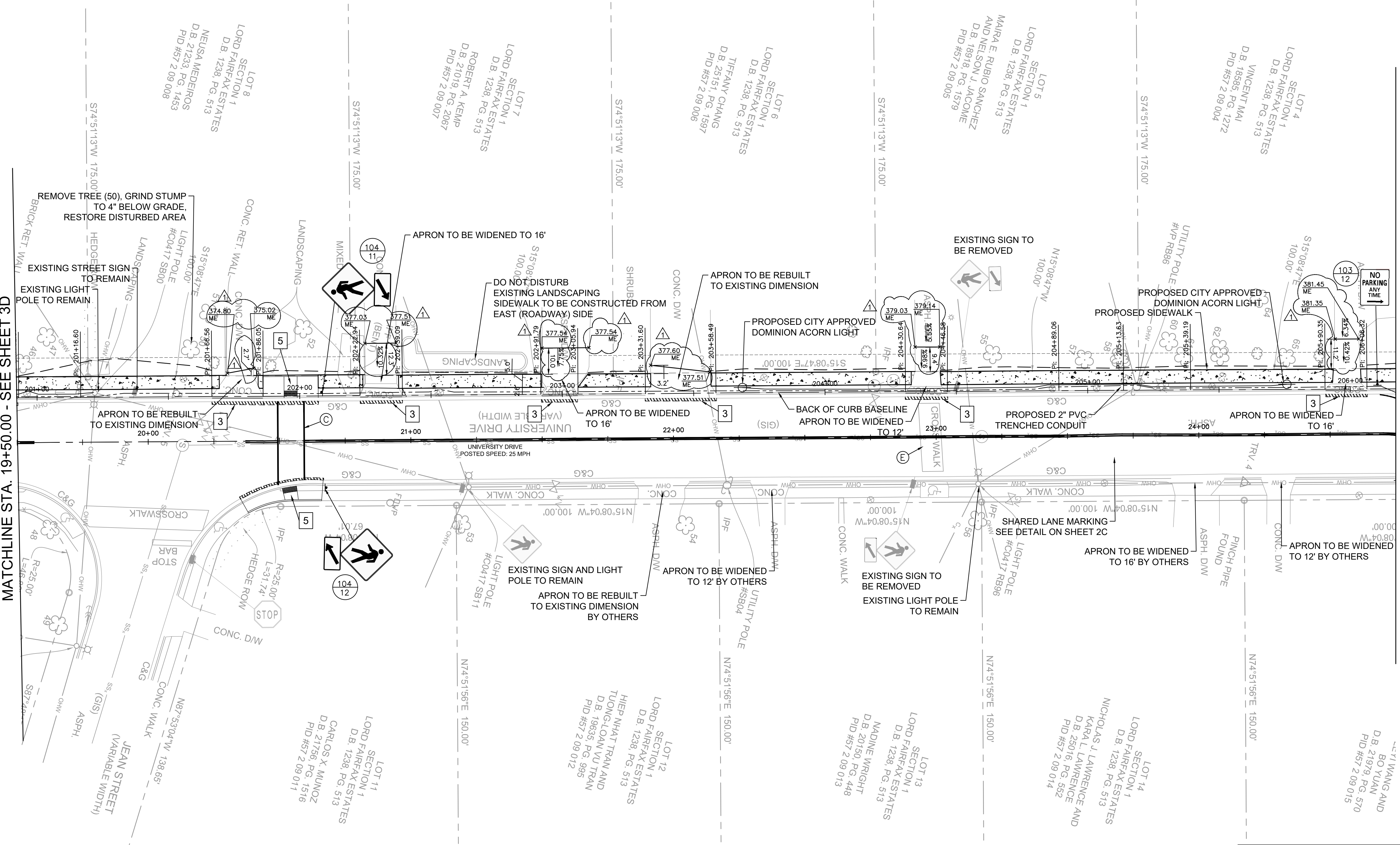
**CITY OF FAIRFAX, VIRGINIA**  
 DEPARTMENT OF PUBLIC WORKS

**UNIVERSITY DRIVE TRAFFIC CALMING**  
 KENMORE DRIVE TO STRATFORD AVENUE  
 CONSTRUCTION PLAN AND INTERIM PAVEMENT MARKINGS

UPC # 113121

SCALE  
 SEE GRAPHIC SCALE

SHEET  
 3E

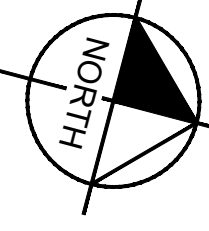
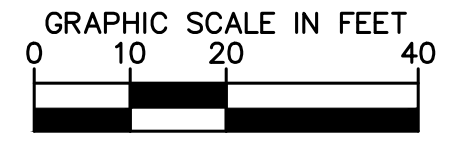


MATCHLINE STA. 19+50.00 - SEE SHEET 3D

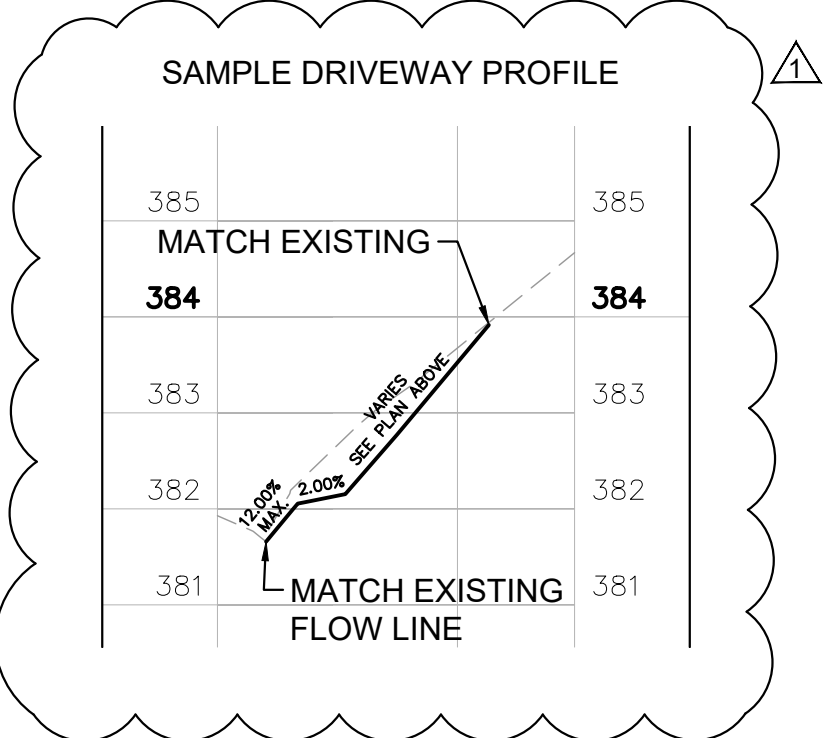
MATCHLINE STA. 24+75.00 - SEE SHEET 3F

- LEGEND**
- 1 SAWCUT AND CONNECT TO EXISTING SIDEWALK
  - 2 SAWCUT AND CONNECT TO EXISTING CURB AND GUTTER
  - 3 SAWCUT EXISTING FULL DEPTH ASPHALT PAVEMENT
  - 4 PROPOSED VDOT STD CG-12 TYPE A CURB RAMP
  - 5 PROPOSED VDOT STD CG-12 TYPE B CURB RAMP
  - 6 PROPOSED VDOT STD CG-2
  - PROPOSED PERMANENT EASEMENT
  - PROPOSED TEMPORARY EASEMENT
  - LIMITS OF DISTURBANCE
  - PROPOSED SAWCUT
  - PROPOSED STD. UD-4
  - [Pattern] PROPOSED CONCRETE
  - [Pattern] PROPOSED FULL DEPTH PAVEMENT
  - [Pattern] PROPOSED SEED AND STRAW

- TEMPORARY PAVEMENT MARKING LEGEND**
- A TYPE F, YELLOW, 4" WIDTH, 4" SPACE
  - B TYPE F, WHITE, 4" WIDTH
  - C TYPE F, WHITE, 6" WIDTH
  - D TYPE F, WHITE, 24" WIDTH
  - E ERADICATE EXISTING PAVEMENT MARKINGS
  - F TIE TO EXISTING PAVEMENT MARKINGS



- NOTES:**
- DRIVEWAYS TO BE WIDENED TO DIMENSIONS NOTED ON PLAN AND ACCORDING TO DETAIL ON GENERAL NOTES SHEET 2B. DRIVEWAYS TO BE REBUILT TO EXISTING FLOW LINE.
  - DRIVEWAYS TO BE WIDENED WITH HIGH EARLY STRENGTH CONCRETE
  - GRADE AROUND PROPOSED ASPHALT AND CURB RAMPS TO ENSURE POSITIVE DRAINAGE.
  - DO NOT DISTURB EXISTING STORM DRAIN INLETS UNLESS OTHERWISE NOTED ON PLAN.



This document, together with the concepts and designs presented herein, as an instrument of service, is intended only for the specific purpose and client for which it was prepared. Reuse of and improper reliance on this document without written authorization and adaptation by Kimley-Horn and Associates, Inc. shall be without liability to Kimley-Horn and Associates, Inc.

This document, together with the concepts and designs presented herein, as an instrument of service, is intended only for the specific purpose and client for which it was prepared. Reuse of and improper reliance on this document without written authorization and adaptation by Kimley-Horn and Associates, Inc. shall be without liability to Kimley-Horn and Associates, Inc.



**CITY OF FAIRFAX**  
 DEPARTMENT OF PUBLIC WORKS  
 Transportation Division  
 10455 Armstrong St. Room 200A  
 Fairfax, VA 22030  
 Phone: 703-385-7889

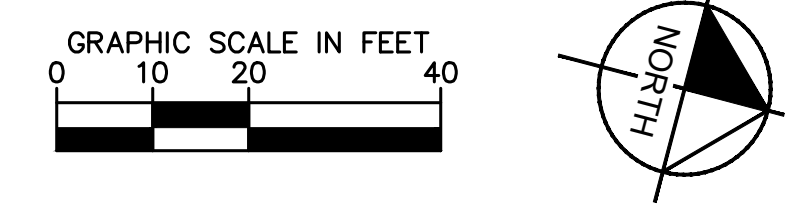
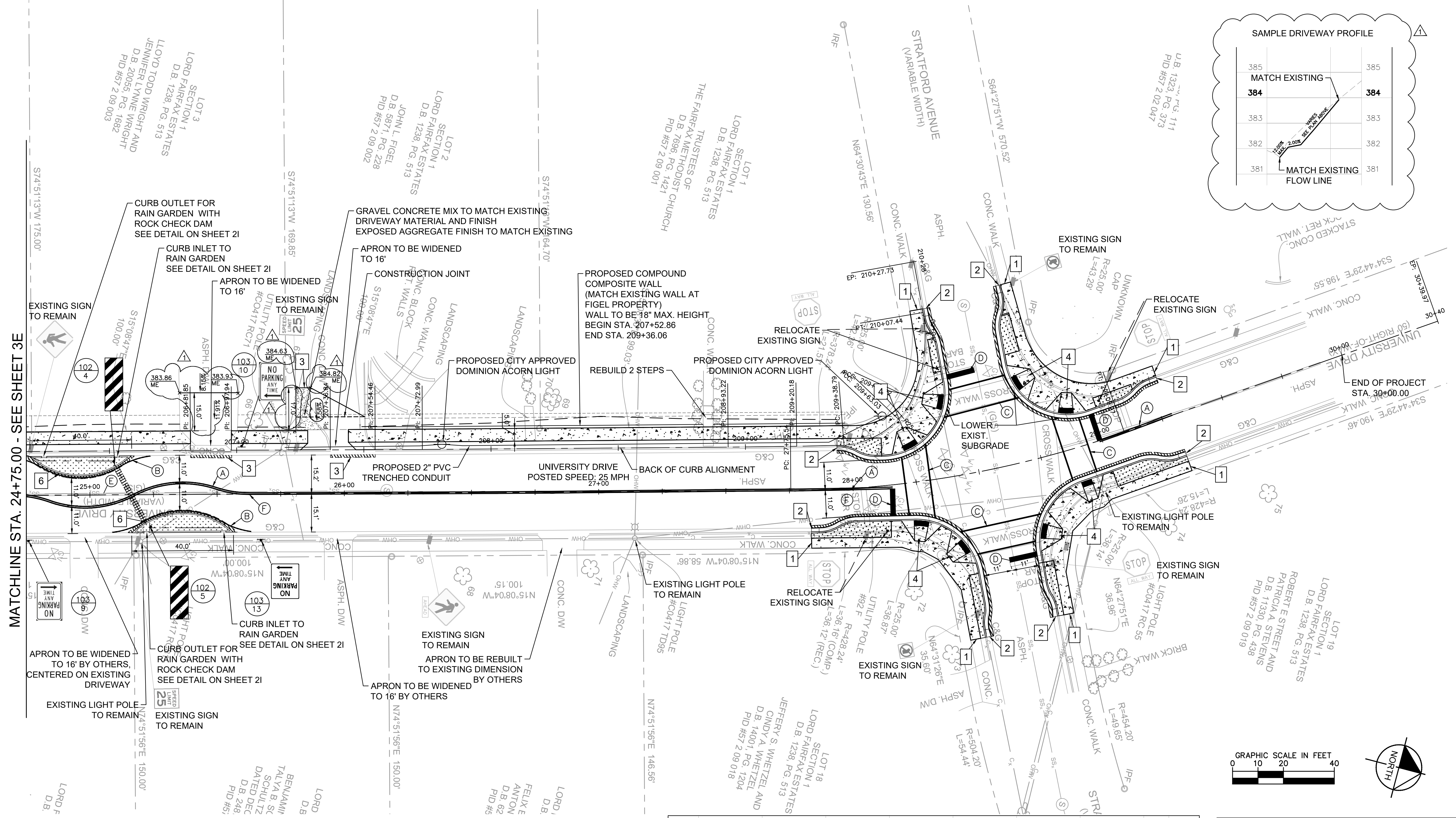
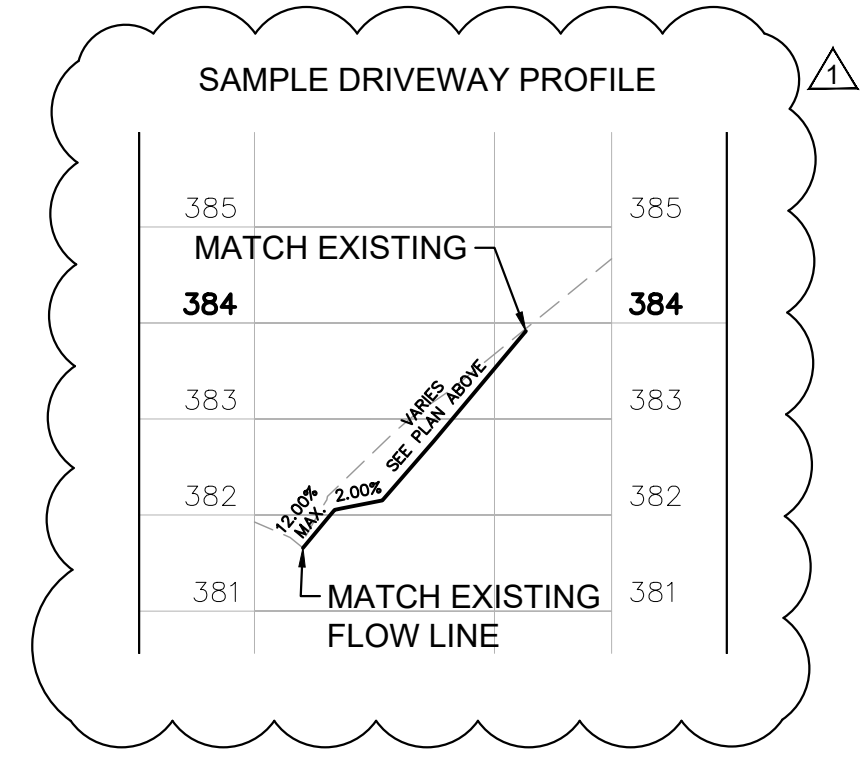


© 2018 KIMLEY-HORN AND ASSOCIATES, INC.  
 11400 Commerce Park Drive  
 Suite 400  
 Reston, Virginia  
 20191  
 Phone: 703-674-1300  
 Fax: 703-674-1350



Revisions	Date
ENGINEERS DIRECTIVE NO. 26	09/25/2020

DESIGNED BY  
 DRAWN BY  
 CHECKED BY

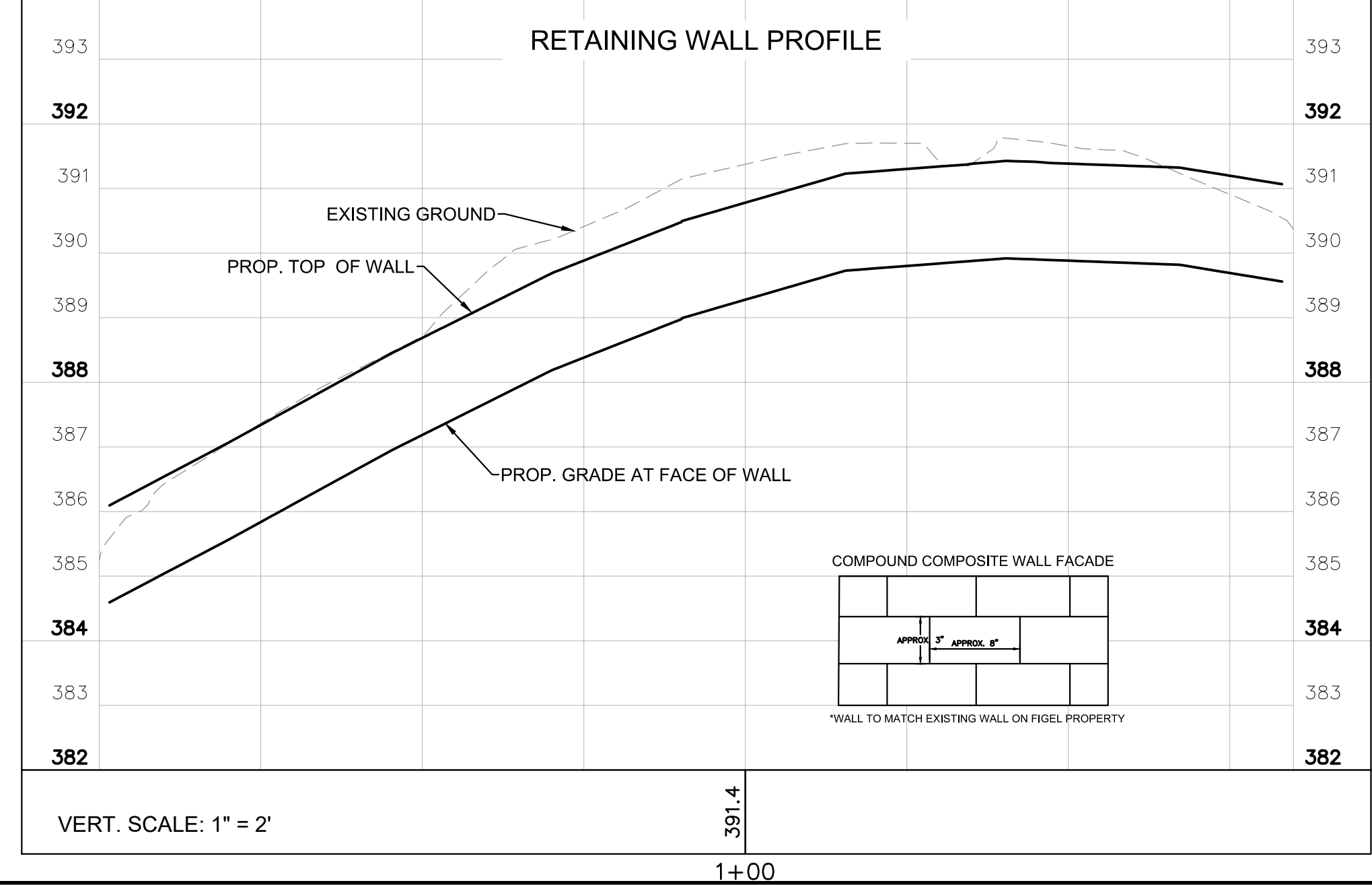


- LEGEND**
- 1 SAWCUT AND CONNECT TO EXISTING SIDEWALK
  - 2 SAWCUT AND CONNECT TO EXISTING CURB AND GUTTER
  - 3 SAWCUT EXISTING FULL DEPTH ASPHALT PAVEMENT
  - 4 PROPOSED VDOT ST'D CG-12 TYPE A CURB RAMP
  - 5 PROPOSED VDOT ST'D CG-12 TYPE B CURB RAMP
  - 6 PROPOSED VDOT ST'D CG-2
- PROPOSED PERMANENT EASEMENT  
 - - - PROPOSED TEMPORARY EASEMENT  
 - - - LIMITS OF DISTURBANCE  
 - - - PROPOSED SAWCUT  
 - - - PROPOSED STD. UD-4  
 [Pattern] PROPOSED CONCRETE  
 [Pattern] PROPOSED FULL DEPTH PAVEMENT  
 [Pattern] PROPOSED SEED AND STRAW

- TEMPORARY PAVEMENT MARKING LEGEND**
- (A) TYPE F, YELLOW, 4" WIDTH, 4" SPACE
  - (B) TYPE F, WHITE, 4" WIDTH
  - (C) TYPE F, WHITE, 6" WIDTH
  - (D) TYPE F, WHITE, 24" WIDTH
  - (E) ERADICATE EXISTING PAVEMENT MARKINGS
  - (F) TIE TO EXISTING PAVEMENT MARKINGS

**NOTES:**

- DRIVEWAYS TO BE WIDENED TO DIMENSIONS NOTED ON PLAN AND ACCORDING TO DETAIL ON GENERAL NOTES SHEET 2B. DRIVEWAYS TO BE REBUILT TO EXISTING FLOW LINE.
- DRIVEWAYS TO BE WIDENED WITH HIGH EARLY STRENGTH CONCRETE
- GRADE AROUND PROPOSED ASPHALT AND CURB RAMPS TO ENSURE POSITIVE DRAINAGE.
- DO NOT DISTURB EXISTING STORM DRAIN INLETS UNLESS OTHERWISE NOTED ON PLAN.



**CITY OF FAIRFAX, VIRGINIA**  
 DEPARTMENT OF PUBLIC WORKS

**UNIVERSITY DRIVE TRAFFIC CALMING**  
 KENMORE DRIVE TO STRATFORD AVENUE  
 CONSTRUCTION PLAN AND INTERIM PAVEMENT MARKINGS

UPC # 113121

SCALE  
 SEE GRAPHIC SCALE

SHEET  
 3F