

Residential Sidewalk Policy

CITY COUNCIL

JANUARY 8, 2019



Presentation Outline

Background

Proposed Policy Revisions

- Process
- Criteria

Next Steps



Residential Sidewalk Policy Background

Timeline:

- 1967: Original policy adopted
- 2001: Current policy adopted
- November 27, 2018: Council work session on residential sidewalk policy and program

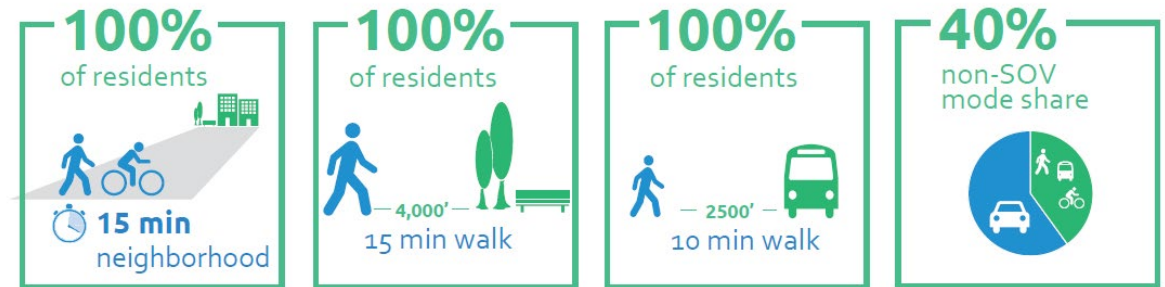
City Pedestrian Goals:

- Provide viable and attractive mobility choices
- Fill gaps in and expand the sidewalk network

Sidewalk Policy Recommendations:

- Clarify and standardize petition process
- Update evaluation criteria
- Clarify process and timeline for evaluation, selection, and implementation of sidewalk projects

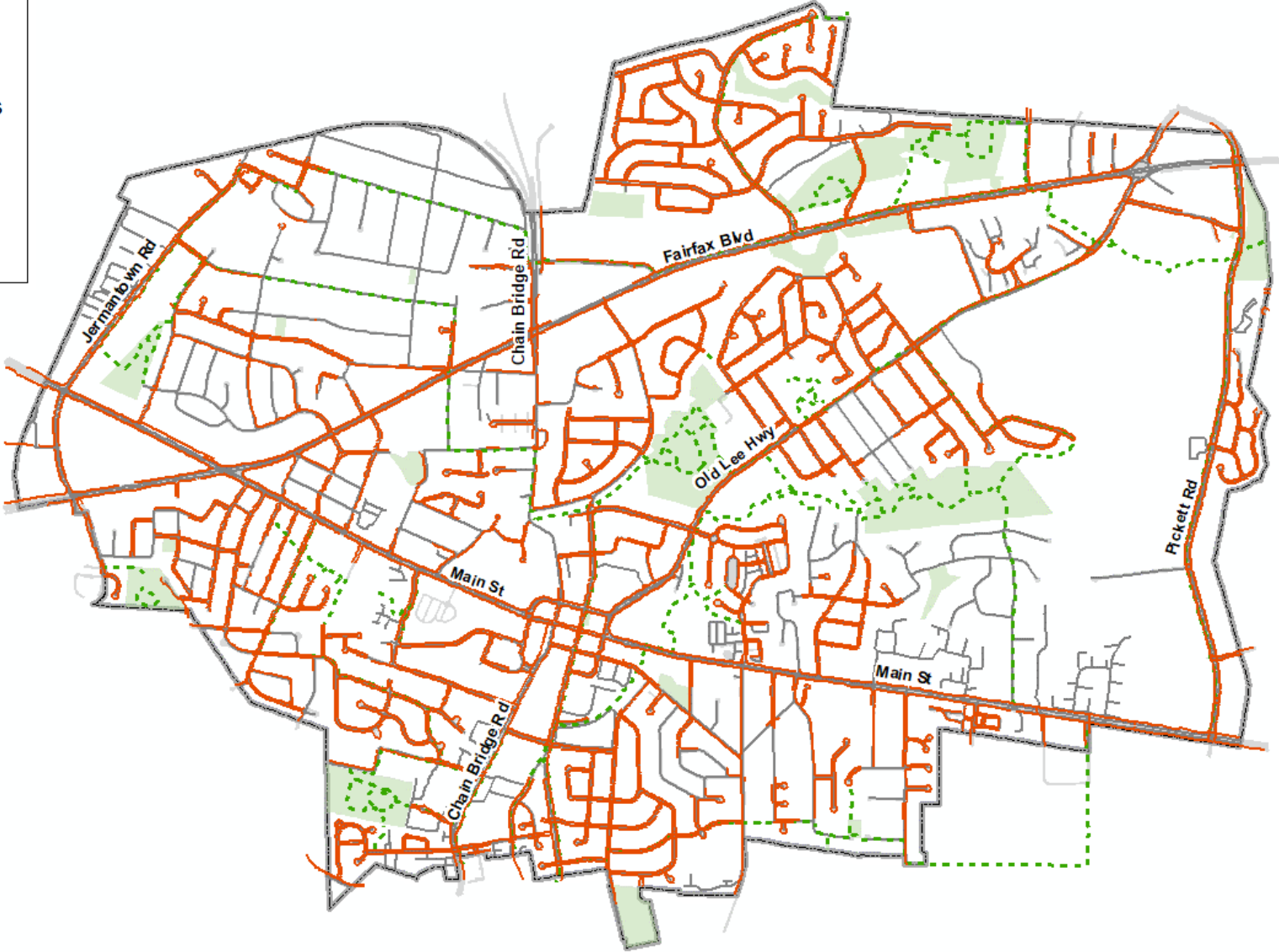
In 2035, Fairfax is a City with... options for residents to easily, safely and efficiently move within and between neighborhoods either by walking, bicycling, taking public transportation or driving.



Existing Sidewalk Network

Legend

- Existing Sidewalks
- Sidewalk Requests
- Trails
- Parks
- City Boundary



Existing Residential Sidewalk Policy

Policy describes:

- Purpose
- Process for initiating a project
- Criteria for evaluating potential projects
- Process for approving and adopting projects

Policy only pertains to new residential sidewalks in front of existing residences

Policy issues:

- No standard process or format for submitting requests
- Unclear how evaluation criteria relate to city's walkability goals
- Limited guidance to interpret and apply evaluation criteria
- Timeline and expectations for project approval not connected to funding feasibility

Residential New Concrete Sidewalk Policy

Font Size: [+](#) [-](#) [+](#) [Share & Bookmark](#) [Feedback](#) [Print](#)

I. PURPOSE

This policy covers the procedure for initiating and designating a project to install new residential concrete sidewalks.



Recommended Policy Updates: Process

Clarify petition process

- Develop standardized resident petition
- Establish timeline for submitting and evaluating requests aligned with the annual budget process

Refine process for recommending projects in the CIP

- Update expectations for annual sidewalk program recommendations

Simplify process for project implementation

- Public hearing and resident notification incorporated in CIP hearings



Recommended Policy Updates: Criteria

Eligibility:

- Restrict requests in this policy to local, residential streets
- Sidewalk requests on other streets to be considered separately

Evaluation Framework:

- Outline criteria tied to City's walkability goals
- Develop framework with objective measures to evaluate project benefits and costs

Criteria are not weighted: framework aims to aid Council's consideration of the relative benefits and costs of various requests and discuss priorities

Evaluation process and criteria are high level: aiming to objectively compare projects with efficient and transparent criteria



Proposed Categories of Evaluation Criteria

Recommended Evaluation Criteria

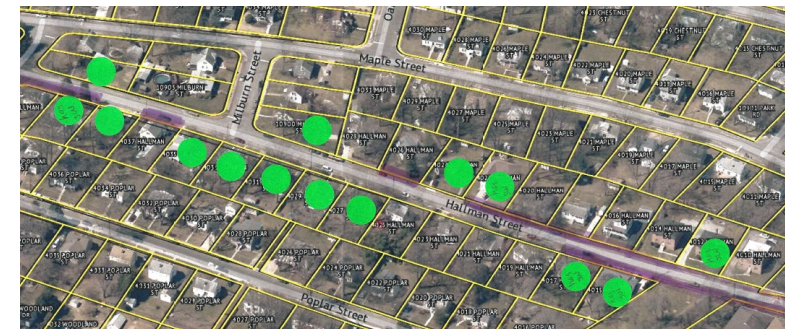
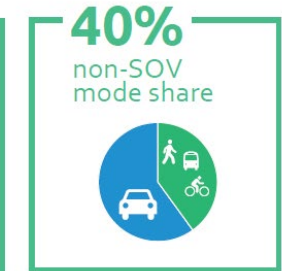
Neighborhood Connectivity (access to transit, bike routes, trails, other sidewalks; completion of missing links)

Access to Destinations (proximity to activity centers or other commercial areas; proximity to schools, parks, community centers)

Safety Considerations (traffic volumes and speeds, roadway width, topographic or geometric conditions)

Resident Support (support from directly impacted and nearby residents)

Constructability and Cost (requirements for ROW, drainage improvements, curb and gutter, utility relocation, retaining walls)



Proposed Residential Sidewalk Evaluation Criteria: Connectivity and Access

Neighborhood Connectivity	Measurements:
<input type="checkbox"/> Improves access to transit	Creates a continuous path within ¼ mile transit buffer (10 min walk)
<input type="checkbox"/> Improves access to trails	Creates a continuous path within ½ mile of a trail (15 min walk)
<input type="checkbox"/> Completes missing link on block	Completes a gap on a block with partial sidewalks
<input type="checkbox"/> Completes missing link in neighborhood	Adds sidewalk on block where none exists with connection to sidewalk on adjacent blocks

Access to Destinations	Measurements:
<input type="checkbox"/> Improves access to activity centers / commercial areas	Creates a continuous path within ½ mile of AC/commercial area
<input type="checkbox"/> Improves access to schools / school bus stops	Creates a continuous path within ½ -1 mile of a school
<input type="checkbox"/> Improves access to parks	Creates a continuous path within ½ mile of a park (15 min walk)
<input type="checkbox"/> Improves access to other community destinations	Creates a continuous path within ½ mile of a community destination (e.g. community center, community pool)



Proposed Residential Sidewalk Evaluation Criteria: Safety, Resident Support, Cost and Constructability

Safety Considerations	Measurements:
<input type="checkbox"/> Traffic volumes constrain pedestrian safety	Average daily traffic volumes
<input type="checkbox"/> Traffic speeds constrain pedestrian safety	85 th percentile traffic speeds
<input type="checkbox"/> Wide roadway constrains pedestrian safety	Paved roadway width
<input type="checkbox"/> Topographic, geometric or other conditions constrain pedestrian safety	Presence of hills, curves, or other conditions that impede visibility or increase potential conflicts with vehicles
Resident Support	Measurements:
<input type="checkbox"/> Majority of residents on block support	HHs on the block(s) who signed the petition (more than 66%)
Cost and Constructability	Measurements:
<input type="checkbox"/> No right of way required	Sufficient existing public right of way to construct sidewalk
<input type="checkbox"/> Opportunities to coordinate with other improvements for increased efficiency and reduced construction impacts	Opportunities exist to coordinate sidewalk construction with other improvements (e.g. drainage, utility, etc.)
<input type="checkbox"/> Overall cost of design and construction	Overall cost – high level estimates considering need for curb and gutter, grading, vegetation removal, etc.



Next Steps

Requested action today: adopt revised policy

This spring:

- Evaluate current sidewalk requests using the revised policy
- Review evaluation results and consider approval of recommended sidewalk program
- Discuss regular annual sidewalk program and funding for future years

Residential sidewalk program recommendations to be proposed as part of the Capital Improvement Program





Questions?

