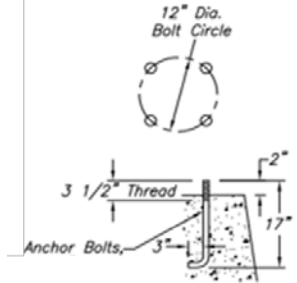


## Decorative Fluted Tapered Aluminum for Post Top Luminaires

Fluted tapered pole with structural Arlen style base constructed of aluminum alloy for single or twin post top luminaires. Poles are available directly embedded or base mounted for use with underground supplied conductors only. Anchor base poles require customer-installed and maintained concrete pole foundations and anchor-bolts.

Light fixtures that match well with this pole include:

- All LED Acorn styles
- All LED Colonial styles
- Premium LED Cutoff styles
- Premium LED Lantern styles

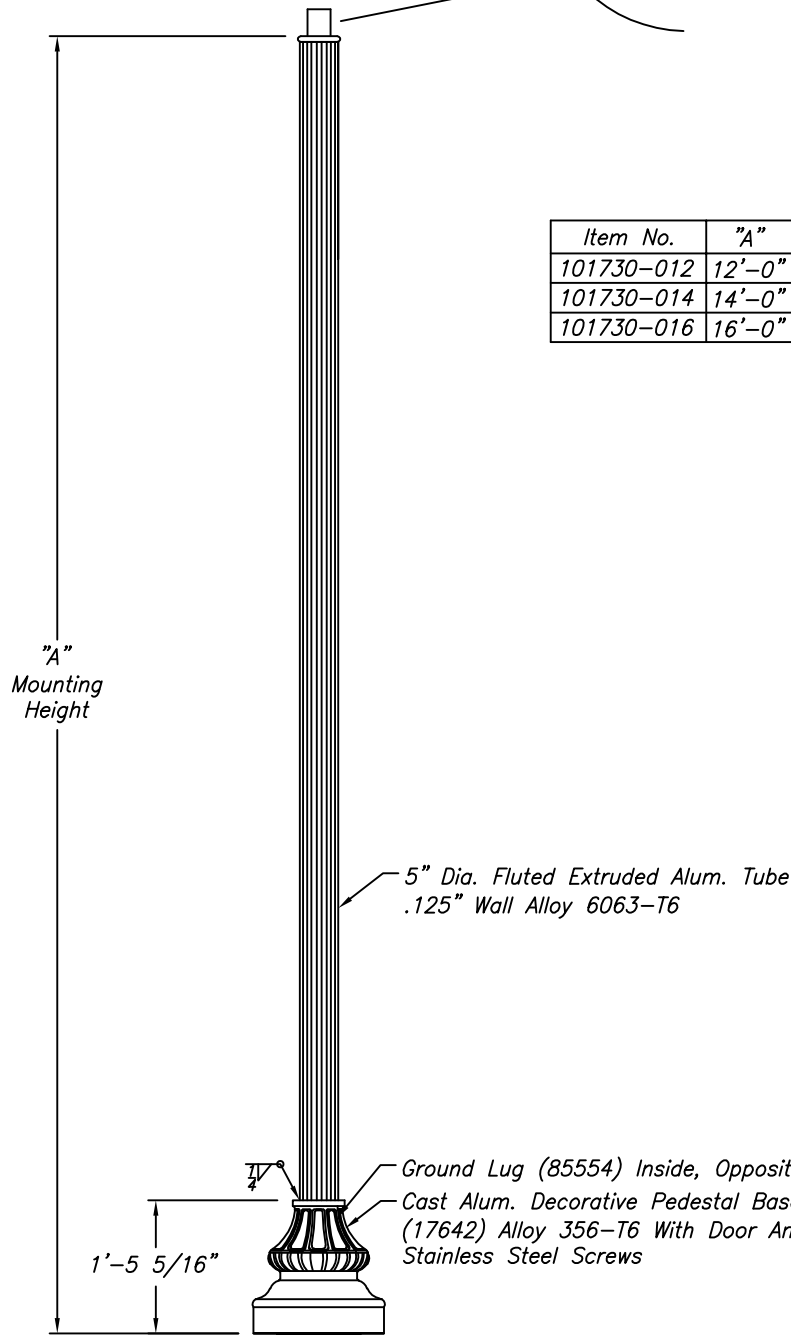
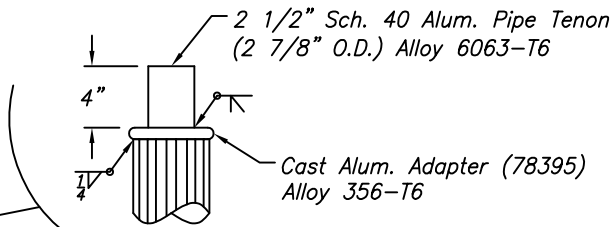


### POLE SPECIFICATIONS

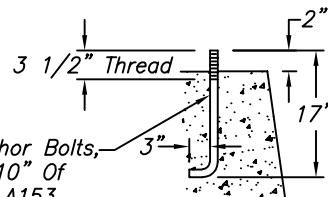
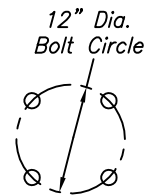
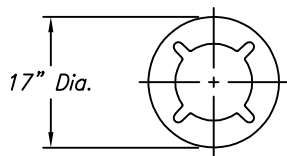
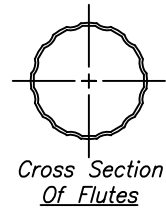
FIXTURE MOUNTING HEIGHT (ft)	TOTAL POLE LENGTH (ft)	BASE DIAMETER (in)	BASE HEIGHT (in)	EMBED or ANCHOR BASE	FINISH COLOR	WMIS CU	POLE ONLY STOCK #
12.0	16.0	17.0	17.0	Embed	Black RAL-9017	PA16ARB	42337639
12.0	16.0	17.0	17.0	Embed	Green RAL-6009	PA16ARM	42337642
14.0	18.0	17.0	17.0	Embed	Black RAL-9005	PA18ARB	42337640
14.0	18.0	17.0	17.0	Embed	Green RAL-6009	PA18ARM	42337643
16.0	20.0	17.0	17.0	Embed	Black RAL-9005	PA20ARB	42337641
16.0	20.0	17.0	17.0	Embed	Green RAL-6009	PA20ARM	42337644
12.0*	12.0	12 inch bolt circle		Anchor	Black RAL-9017	PA12ABAB	42337782
12.0*	12.0	12 inch bolt circle		Anchor	Green RAL-6009	PA12ABAM	42337785
14.0*	14.0	12 inch bolt circle		Anchor	Black RAL-9005	PA14ABAB	42337783
14.0*	14.0	12 inch bolt circle		Anchor	Green RAL-6009	PA14ABAM	42337786
16.0*	16.0	12 inch bolt circle		Anchor	Black RAL-9005	PA16ABAB	42337784
16.0*	16.0	12 inch bolt circle		Anchor	Green RAL-6009	PA16ABAM	42337887

\* Approximate based on height above grade to top of anchor base





Item No.	"A"
101730-012	12'-0"
101730-014	14'-0"
101730-016	16'-0"



- (4) 3/4"-10NC Galv. Stl. Anchor Bolts, AASHTO M314-90 Grade 55, 10" Of Threaded End Galv. Per ASTM A153.
- (4) 3/4"-10NC Galv. Stl. Hex. Nuts
- (4) 3/4" Galv. Stl. Lockwashers
- (4) 3/4" Galv. Stl. Flatwashers

Ref: 26973

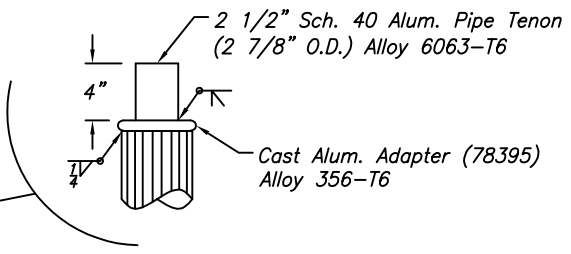
**WARNING: DO NOT INSTALL LIGHTING POLES WITHOUT LUMINAIRES**

NO.	REVISIONS	DATE
1	Was Clamshell Base (tnb)	4/19

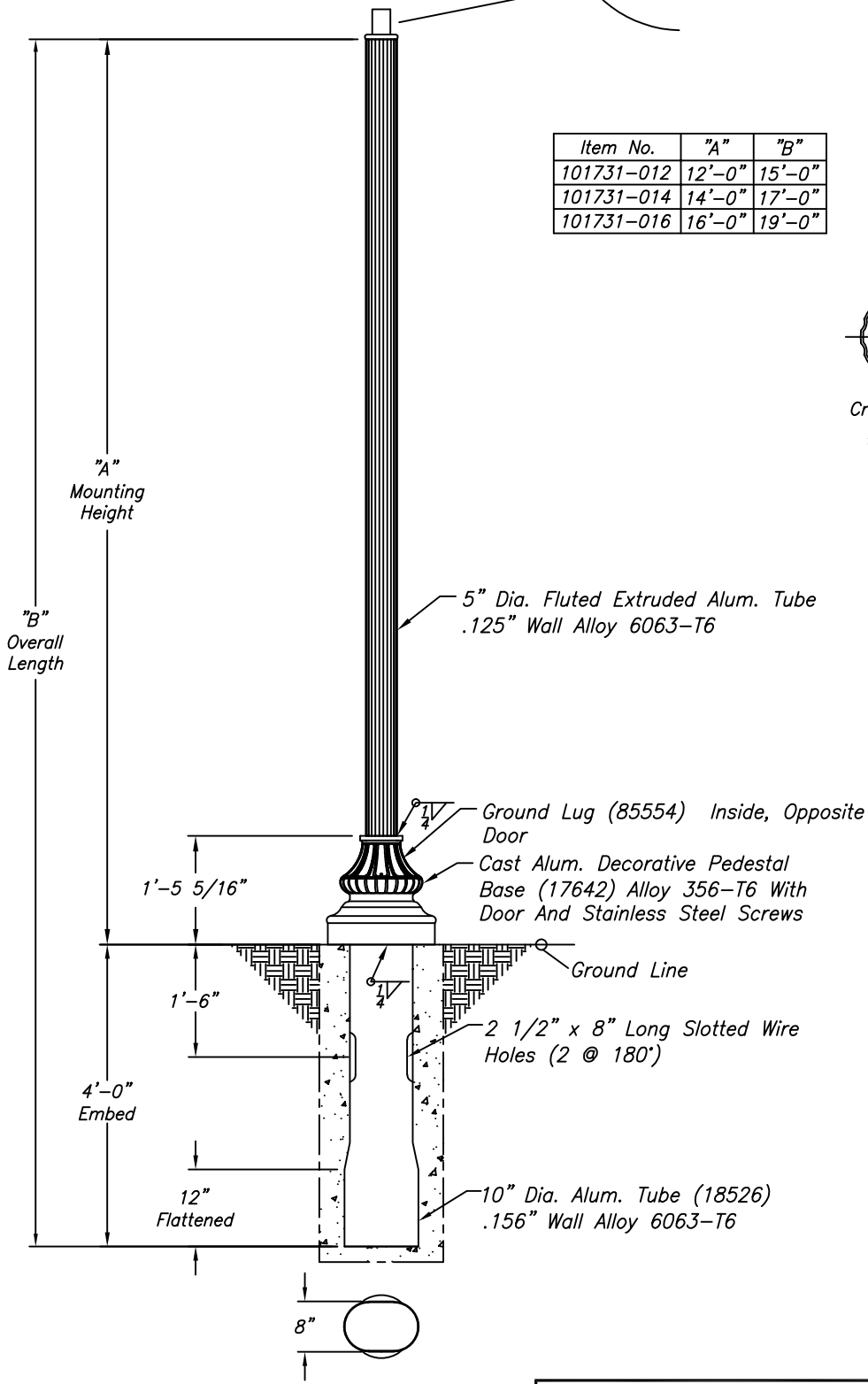
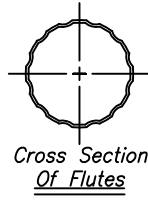
**hapco**  
Abingdon, Va.

TITLE ARLEN SERIES LIGHT POLES	
CUSTOMER Dominion Power	
SCALE 16	DATE 02/08/2019
BY TNB	DWG. NO.
CHK'D	B101730

B101730



Item No.	"A"	"B"
101731-012	12'-0"	15'-0"
101731-014	14'-0"	17'-0"
101731-016	16'-0"	19'-0"



B101731

WARNING: DO NOT INSTALL LIGHTING POLES WITHOUT LUMINAIRES

NO.	REVISIONS	DATE
1	Was Clamshell Base (tnb)	4/19

**hapco**  
Abingdon, Va.

TITLE ARLEN SERIES LIGHT POLES	
CUSTOMER Dominion Power	
SCALE 16	DATE 02/08/2019
BY TNB	DWG. NO.
CHK'D	B101731