

SIGN KEY

- (A) MARQUEE
- (B) STREET SIGN
- (C) STOP SIGN
- (D) NO PARKING - SUNDAY ONLY
- (E) NO PARKING
- (F) ENTRANCE MONUMENT
- (G) DIRECTIONAL SIGN
- (H) HANDICAP PARKING
- (I) FAIRFAX NURSING CENTER EMPLOYEE PARKING ONLY MON-FRI 6AM-7PM

LEGEND

- 70 PARKING SPACES SHARED WITH FAIRFAX NURSING CENTER
- EXISTING PARKING AREA TO BE REMOVED OR REGRADED WITH TOWNHOME CONSTRUCTION (PHASE ONE)

PARKING TABULATION

	MINIMUM REQUIREMENT	REQUIRED NO. OF SPACES	PROVIDED NO. OF SPACES		
			EXISTING	WITH PHASE 1	WITH PHASE 2
EXISTING USES:					
CHURCH	404 Seats 1 Space / 4 Seats	101	182	107 (1)	145 (3)
DAY CARE	8,500 SF 5 Spaces / 1,000 SF	43	43	43	43
TOTAL		144	225	150	188
PROPOSED USE:					
TOWNHOMES	10 Units 2 Spaces / Unit	20	N/A	30 (2)	30 (2)
TOTAL		164	225	180	218

NOTES:
 (1) 75 Spaces removed with Phase One Townhome development
 (2) 10 Garage Spaces + 10 Driveway Spaces + 10 Parking Bay Spaces added
 (3) 38 Spaces added with Phase Two parking lot on west side of Church

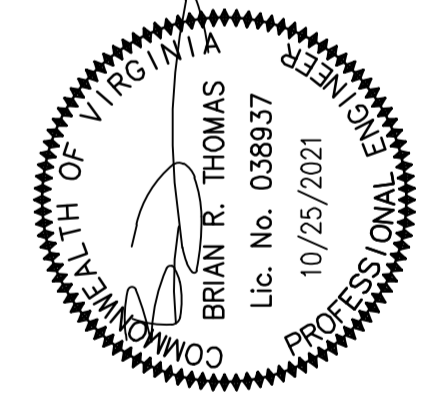
ADA PARKING SPACE TABULATION

	TOTAL # OF PKG SPACES	REQUIRED NO. OF ADA SPACES		PROVIDED NO. OF ADA SPACES	
		TOTAL	VAN-ACCESSIBLE	TOTAL	VAN-ACCESSIBLE
EXISTING	225	7	2	7	2
AFTER PHASE 1	180	6	1	6	1
WITH PHASE 2	38	2	1	2	1
AFTER ALL PHASES	218	8	3	8	3

PARKING LAYOUT, TABULATIONS & SIGN LOCATIONS

FAIRFAX PRESBYTERIAN CHURCH

CITY OF FAIRFAX, VIRGINIA



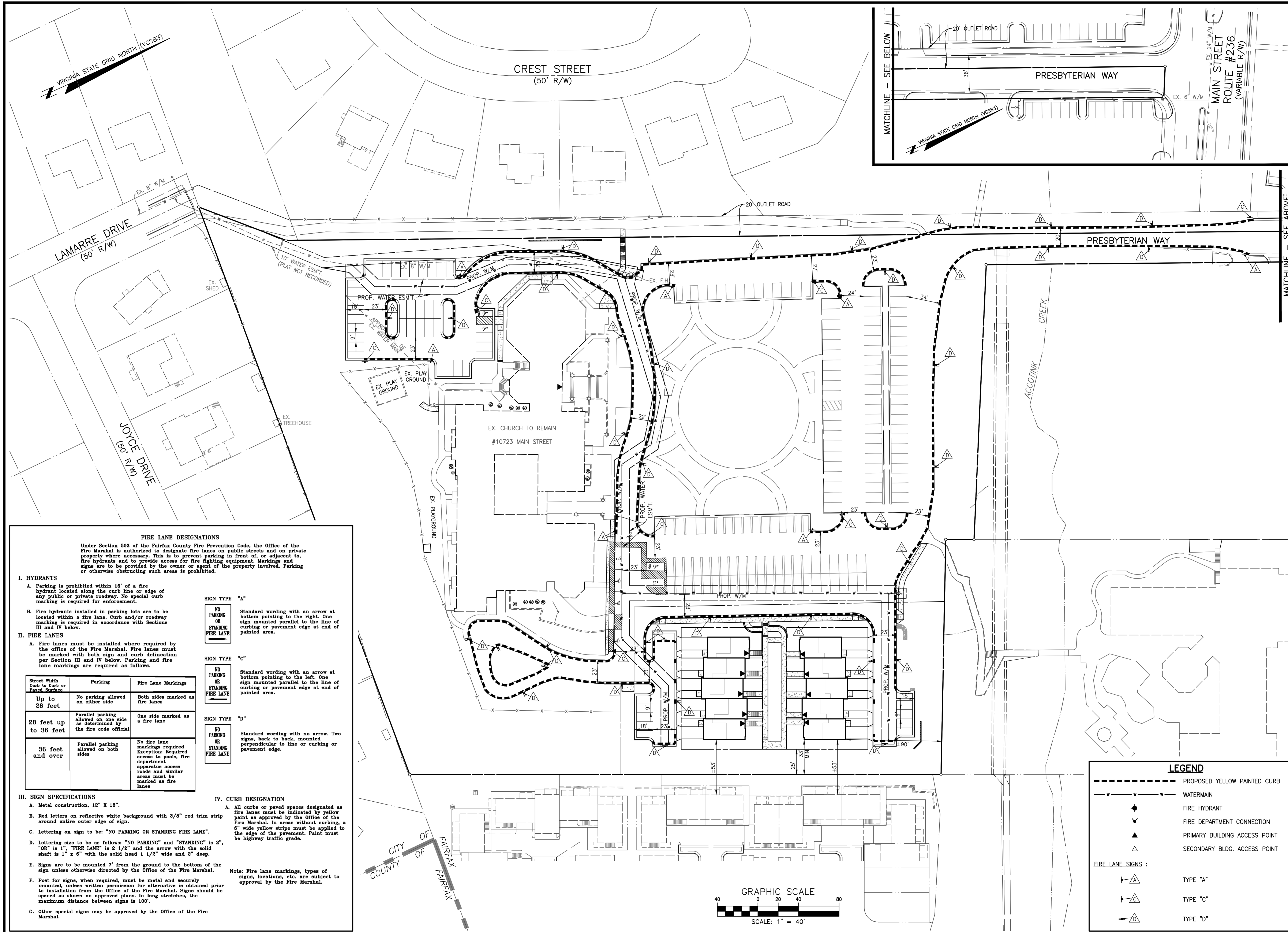
NO.	DATE	REVISION	BY

DESIGN: KJV
 DRAFT: KJV
 APPROVED: HMF
 DATE: JAN. 2021
 SCALE: HORIZ: 1" = 40'
 VERT: ---

SHEET 12 OF 46
 PRJ NO: 2017-2570
 TYPE: MDP

NO. DATE REVISION PRIOR TO APPROVAL

CPJ Charles P. Johnson & Associates, Inc.
 Civil and Environmental Engineers • Planners • Landscape Architects • Surveyors
 ASSOCIATES
 9909 Pender Dr., Ste. 210 Fairfax, VA 22030 703-585-7555 FAX: 703-273-8995
 www.cpj.com • Chantilly, VA • Annapolis, MD • Greenbelt, MD • Frederick, MD • Fairfax, VA



FIRE LANE DESIGNATIONS

Under Section 603 of the Fairfax County Fire Prevention Code, the Office of the Fire Marshal is authorized to designate fire lanes on public streets and on private property where necessary. This is to prevent parking in front of, or adjacent to, fire hydrants and to provide access for fire fighting equipment. Markings and signs are to be provided by the owner or agent of the property involved. Parking or otherwise obstructing such areas is prohibited.

I. HYDRANTS

- A. Parking is prohibited within 15' of a fire hydrant located along the curb line or special curb marking is required for enforcement.
- B. Fire hydrants installed in parking lots are to be located within a fire lane. Curb and/or roadway marking is required in accordance with Sections III and IV below.

II. FIRE LANES

- A. Fire lanes must be installed where required by the office of the Fire Marshal. Fire lanes must be marked with both sign and curb delineation per Section III and IV below. Parking and fire lane markings are required as follows.

Street Width Curb to Curb or Paved Surface	Parking	Fire Lane Markings
Up to 28 feet	No parking allowed on either side	Both sides marked as fire lanes
28 feet up to 36 feet	Parallel parking allowed on one side as determined by the fire code official	One side marked as a fire lane
36 feet and over	Parallel parking allowed on both sides	No fire lane markings required Exception: Required access to pools, fire department apparatus access roads and similar areas must be marked as fire lanes

SIGN TYPE "A"



Standard wording with an arrow at bottom pointing to the right. One sign mounted parallel to the line of curbing or pavement edge at end of painted area.

SIGN TYPE "C"



Standard wording with an arrow at bottom pointing to the left. One sign mounted parallel to the line of curbing or pavement edge at end of painted area.

SIGN TYPE "D"



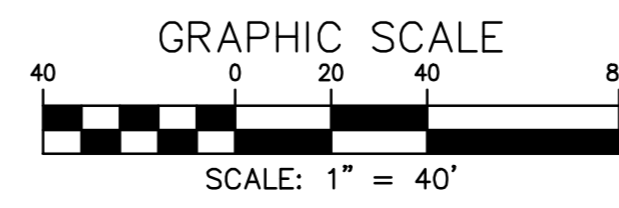
Standard wording with no arrow. Two signs, back to back, mounted perpendicular to line or curbing or pavement edge.

III. SIGN SPECIFICATIONS

- A. Metal construction, 12" X 18".
- B. Red letters on reflective white background with 3/8" red trim strip around entire outer edge of sign.
- C. Lettering on sign to be: "NO PARKING OR STANDING FIRE LANE".
- D. Lettering size to be as follows: "NO PARKING" is 2", "OR" is 1", "FIRE LANE" is 2 1/2" and the arrow with the solid shaft is 1" x 6" with the solid head 1 1/2" wide and 2" deep.
- E. Signs are to be mounted 7' from the ground to the bottom of the sign unless otherwise directed by the Office of the Fire Marshal.
- F. Post for signs, when required, must be metal and securely mounted, unless written permission for alternative is obtained prior to installation from the Office of the Fire Marshal. Signs should be spaced as shown on approved plans. In long stretches, the maximum distance between signs is 100'.
- G. Other special signs may be approved by the Office of the Fire Marshal.

IV. CURB DESIGNATION

- A. All curbs or paved spaces designated as fire lanes must be indicated by yellow paint as approved by the Office of the Fire Marshal. In areas without curbing, a 6" wide yellow stripe must be applied to the edge of the pavement. Paint must be highway traffic grade.
- Note: Fire lane markings, types of signs, locations, etc. are subject to approval by the Fire Marshal.



LEGEND

- PROPOSED YELLOW PAINTED CURB
 - WATERMAIN
 - ◆ FIRE HYDRANT
 - ▽ FIRE DEPARTMENT CONNECTION
 - ▲ PRIMARY BUILDING ACCESS POINT
 - △ SECONDARY BLDG. ACCESS POINT
- FIRE LANE SIGNS :**
- ⊠ TYPE "A"
 - ⊠ TYPE "C"
 - ⊠ TYPE "D"

FIRE PROTECTION PLAN
FAIRFAX PRESBYTERIAN CHURCH
CITY OF FAIRFAX, VIRGINIA

NO. DATE REVISION PRIOR TO APPROVAL

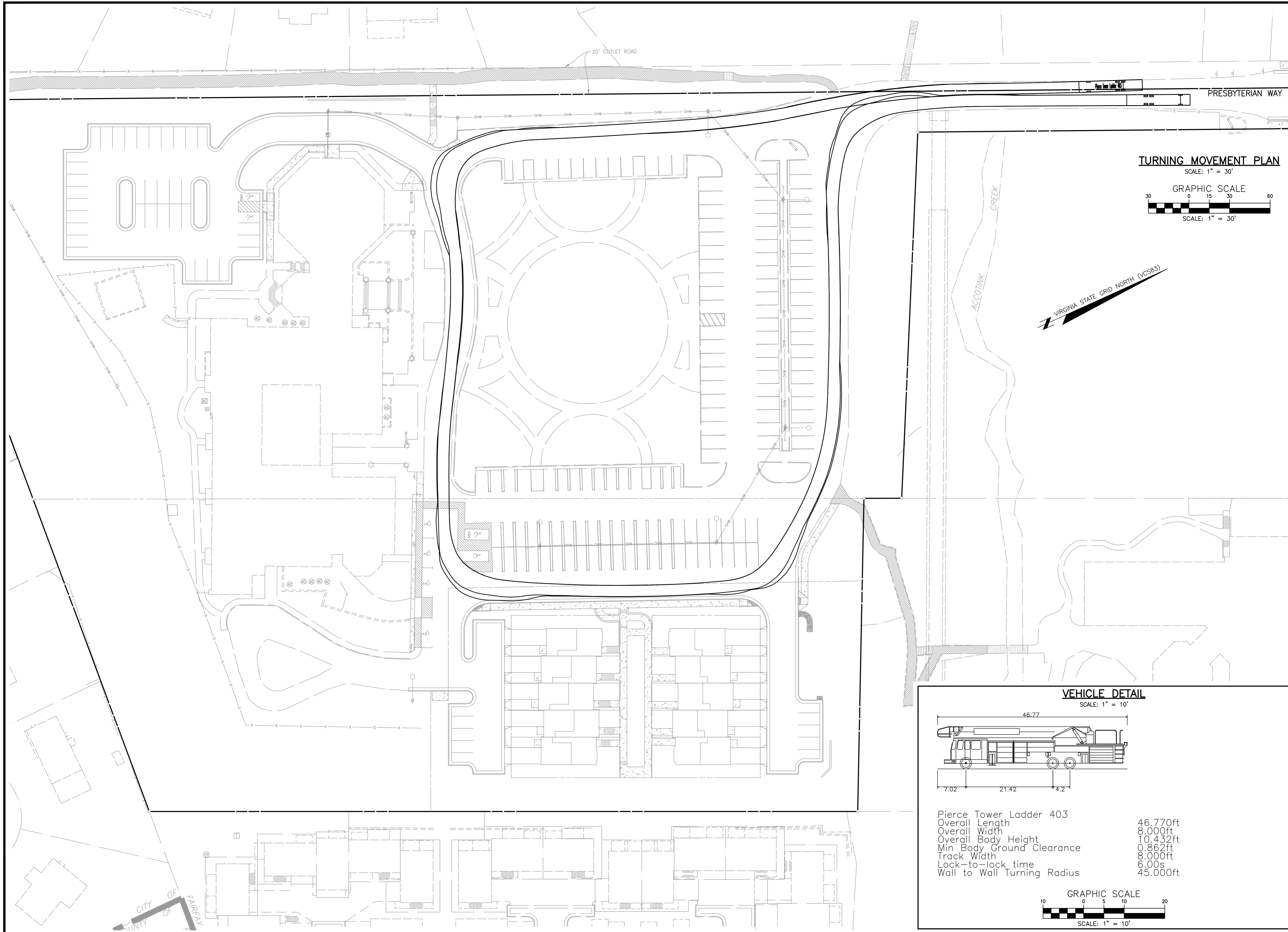
Charles P. Johnson & Associates, Inc.
Civil and Environmental Engineers • Planners • Landscape Architects • Surveyors
9909 Pender Dr., Ste. 210 Fairfax, VA 22030 703-585-7555 FAX: 703-273-8095
www.cpa-engineers.com • Charlottesville, VA • Alexandria, VA • Fredericksburg, VA • Fairfax, VA

PROFESSIONAL ENGINEER
BRIAN R. THOMAS
Lic. No. 038937
10/25/2021

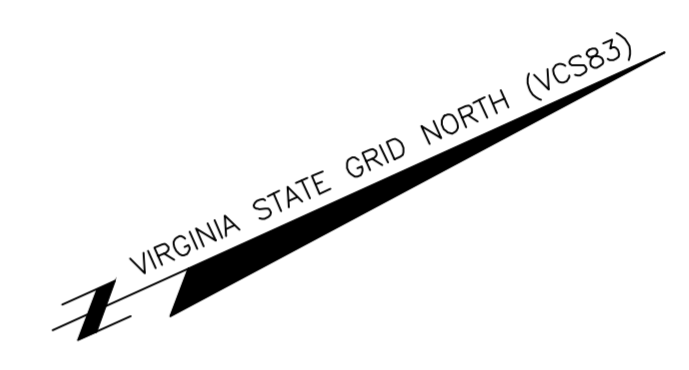
DESIGN	DRAWN	CHECKED	DATE	SCALE	APPROVED	DATE	REVISIONS	REVIEW	APPROVED	DATE
			JULY 2021	1" = 40'						

SHEET 15 OF 46
PRJ NO: 2017-2570
TYPE: MDP

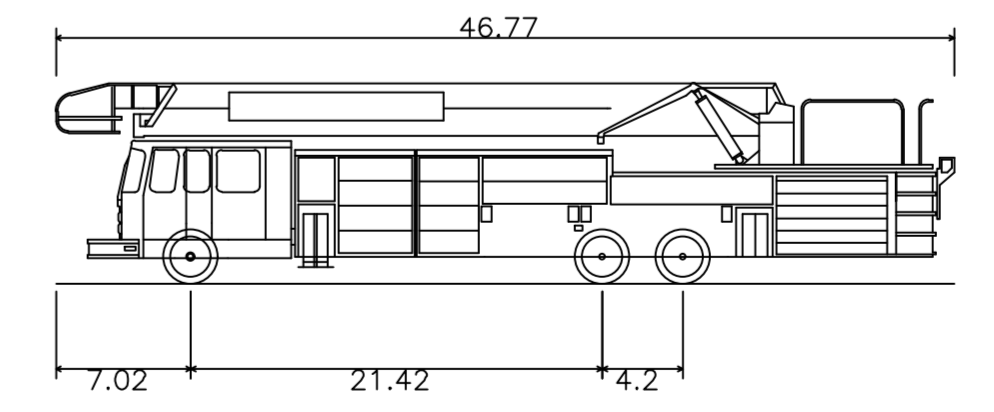
Attached Xrefs: 00-60700/00-60600/XREF-00301/XREF-00401/XREF-00402/XREF-00403/XREF-00404/XREF-00405/XREF-00406/XREF-00407/XREF-00408/XREF-00409/XREF-00410/XREF-00411/XREF-00412/XREF-00413/XREF-00414/XREF-00415/XREF-00416/XREF-00417/XREF-00418/XREF-00419/XREF-00420/XREF-00421/XREF-00422/XREF-00423/XREF-00424/XREF-00425/XREF-00426/XREF-00427/XREF-00428/XREF-00429/XREF-00430/XREF-00431/XREF-00432/XREF-00433/XREF-00434/XREF-00435/XREF-00436/XREF-00437/XREF-00438/XREF-00439/XREF-00440/XREF-00441/XREF-00442/XREF-00443/XREF-00444/XREF-00445/XREF-00446/XREF-00447/XREF-00448/XREF-00449/XREF-00450/XREF-00451/XREF-00452/XREF-00453/XREF-00454/XREF-00455/XREF-00456/XREF-00457/XREF-00458/XREF-00459/XREF-00460/XREF-00461/XREF-00462/XREF-00463/XREF-00464/XREF-00465/XREF-00466/XREF-00467/XREF-00468/XREF-00469/XREF-00470/XREF-00471/XREF-00472/XREF-00473/XREF-00474/XREF-00475/XREF-00476/XREF-00477/XREF-00478/XREF-00479/XREF-00480/XREF-00481/XREF-00482/XREF-00483/XREF-00484/XREF-00485/XREF-00486/XREF-00487/XREF-00488/XREF-00489/XREF-00490/XREF-00491/XREF-00492/XREF-00493/XREF-00494/XREF-00495/XREF-00496/XREF-00497/XREF-00498/XREF-00499/XREF-00500/XREF-00501/XREF-00502/XREF-00503/XREF-00504/XREF-00505/XREF-00506/XREF-00507/XREF-00508/XREF-00509/XREF-00510/XREF-00511/XREF-00512/XREF-00513/XREF-00514/XREF-00515/XREF-00516/XREF-00517/XREF-00518/XREF-00519/XREF-00520/XREF-00521/XREF-00522/XREF-00523/XREF-00524/XREF-00525/XREF-00526/XREF-00527/XREF-00528/XREF-00529/XREF-00530/XREF-00531/XREF-00532/XREF-00533/XREF-00534/XREF-00535/XREF-00536/XREF-00537/XREF-00538/XREF-00539/XREF-00540/XREF-00541/XREF-00542/XREF-00543/XREF-00544/XREF-00545/XREF-00546/XREF-00547/XREF-00548/XREF-00549/XREF-00550/XREF-00551/XREF-00552/XREF-00553/XREF-00554/XREF-00555/XREF-00556/XREF-00557/XREF-00558/XREF-00559/XREF-00560/XREF-00561/XREF-00562/XREF-00563/XREF-00564/XREF-00565/XREF-00566/XREF-00567/XREF-00568/XREF-00569/XREF-00570/XREF-00571/XREF-00572/XREF-00573/XREF-00574/XREF-00575/XREF-00576/XREF-00577/XREF-00578/XREF-00579/XREF-00580/XREF-00581/XREF-00582/XREF-00583/XREF-00584/XREF-00585/XREF-00586/XREF-00587/XREF-00588/XREF-00589/XREF-00590/XREF-00591/XREF-00592/XREF-00593/XREF-00594/XREF-00595/XREF-00596/XREF-00597/XREF-00598/XREF-00599/XREF-00600/XREF-00601/XREF-00602/XREF-00603/XREF-00604/XREF-00605/XREF-00606/XREF-00607/XREF-00608/XREF-00609/XREF-00610/XREF-00611/XREF-00612/XREF-00613/XREF-00614/XREF-00615/XREF-00616/XREF-00617/XREF-00618/XREF-00619/XREF-00620/XREF-00621/XREF-00622/XREF-00623/XREF-00624/XREF-00625/XREF-00626/XREF-00627/XREF-00628/XREF-00629/XREF-00630/XREF-00631/XREF-00632/XREF-00633/XREF-00634/XREF-00635/XREF-00636/XREF-00637/XREF-00638/XREF-00639/XREF-00640/XREF-00641/XREF-00642/XREF-00643/XREF-00644/XREF-00645/XREF-00646/XREF-00647/XREF-00648/XREF-00649/XREF-00650/XREF-00651/XREF-00652/XREF-00653/XREF-00654/XREF-00655/XREF-00656/XREF-00657/XREF-00658/XREF-00659/XREF-00660/XREF-00661/XREF-00662/XREF-00663/XREF-00664/XREF-00665/XREF-00666/XREF-00667/XREF-00668/XREF-00669/XREF-00670/XREF-00671/XREF-00672/XREF-00673/XREF-00674/XREF-00675/XREF-00676/XREF-00677/XREF-00678/XREF-00679/XREF-00680/XREF-00681/XREF-00682/XREF-00683/XREF-00684/XREF-00685/XREF-00686/XREF-00687/XREF-00688/XREF-00689/XREF-00690/XREF-00691/XREF-00692/XREF-00693/XREF-00694/XREF-00695/XREF-00696/XREF-00697/XREF-00698/XREF-00699/XREF-00700/XREF-00701/XREF-00702/XREF-00703/XREF-00704/XREF-00705/XREF-00706/XREF-00707/XREF-00708/XREF-00709/XREF-00710/XREF-00711/XREF-00712/XREF-00713/XREF-00714/XREF-00715/XREF-00716/XREF-00717/XREF-00718/XREF-00719/XREF-00720/XREF-00721/XREF-00722/XREF-00723/XREF-00724/XREF-00725/XREF-00726/XREF-00727/XREF-00728/XREF-00729/XREF-00730/XREF-00731/XREF-00732/XREF-00733/XREF-00734/XREF-00735/XREF-00736/XREF-00737/XREF-00738/XREF-00739/XREF-00740/XREF-00741/XREF-00742/XREF-00743/XREF-00744/XREF-00745/XREF-00746/XREF-00747/XREF-00748/XREF-00749/XREF-00750/XREF-00751/XREF-00752/XREF-00753/XREF-00754/XREF-00755/XREF-00756/XREF-00757/XREF-00758/XREF-00759/XREF-00760/XREF-00761/XREF-00762/XREF-00763/XREF-00764/XREF-00765/XREF-00766/XREF-00767/XREF-00768/XREF-00769/XREF-00770/XREF-00771/XREF-00772/XREF-00773/XREF-00774/XREF-00775/XREF-00776/XREF-00777/XREF-00778/XREF-00779/XREF-00780/XREF-00781/XREF-00782/XREF-00783/XREF-00784/XREF-00785/XREF-00786/XREF-00787/XREF-00788/XREF-00789/XREF-00790/XREF-00791/XREF-00792/XREF-00793/XREF-00794/XREF-00795/XREF-00796/XREF-00797/XREF-00798/XREF-00799/XREF-00800/XREF-00801/XREF-00802/XREF-00803/XREF-00804/XREF-00805/XREF-00806/XREF-00807/XREF-00808/XREF-00809/XREF-00810/XREF-00811/XREF-00812/XREF-00813/XREF-00814/XREF-00815/XREF-00816/XREF-00817/XREF-00818/XREF-00819/XREF-00820/XREF-00821/XREF-00822/XREF-00823/XREF-00824/XREF-00825/XREF-00826/XREF-00827/XREF-00828/XREF-00829/XREF-00830/XREF-00831/XREF-00832/XREF-00833/XREF-00834/XREF-00835/XREF-00836/XREF-00837/XREF-00838/XREF-00839/XREF-00840/XREF-00841/XREF-00842/XREF-00843/XREF-00844/XREF-00845/XREF-00846/XREF-00847/XREF-00848/XREF-00849/XREF-00850/XREF-00851/XREF-00852/XREF-00853/XREF-00854/XREF-00855/XREF-00856/XREF-00857/XREF-00858/XREF-00859/XREF-00860/XREF-00861/XREF-00862/XREF-00863/XREF-00864/XREF-00865/XREF-00866/XREF-00867/XREF-00868/XREF-00869/XREF-00870/XREF-00871/XREF-00872/XREF-00873/XREF-00874/XREF-00875/XREF-00876/XREF-00877/XREF-00878/XREF-00879/XREF-00880/XREF-00881/XREF-00882/XREF-00883/XREF-00884/XREF-00885/XREF-00886/XREF-00887/XREF-00888/XREF-00889/XREF-00890/XREF-00891/XREF-00892/XREF-00893/XREF-00894/XREF-00895/XREF-00896/XREF-00897/XREF-00898/XREF-00899/XREF-00900/XREF-00901/XREF-00902/XREF-00903/XREF-00904/XREF-00905/XREF-00906/XREF-00907/XREF-00908/XREF-00909/XREF-00910/XREF-00911/XREF-00912/XREF-00913/XREF-00914/XREF-00915/XREF-00916/XREF-00917/XREF-00918/XREF-00919/XREF-00920/XREF-00921/XREF-00922/XREF-00923/XREF-00924/XREF-00925/XREF-00926/XREF-00927/XREF-00928/XREF-00929/XREF-00930/XREF-00931/XREF-00932/XREF-00933/XREF-00934/XREF-00935/XREF-00936/XREF-00937/XREF-00938/XREF-00939/XREF-00940/XREF-00941/XREF-00942/XREF-00943/XREF-00944/XREF-00945/XREF-00946/XREF-00947/XREF-00948/XREF-00949/XREF-00950/XREF-00951/XREF-00952/XREF-00953/XREF-00954/XREF-00955/XREF-00956/XREF-00957/XREF-00958/XREF-00959/XREF-00960/XREF-00961/XREF-00962/XREF-00963/XREF-00964/XREF-00965/XREF-00966/XREF-00967/XREF-00968/XREF-00969/XREF-00970/XREF-00971/XREF-00972/XREF-00973/XREF-00974/XREF-00975/XREF-00976/XREF-00977/XREF-00978/XREF-00979/XREF-00980/XREF-00981/XREF-00982/XREF-00983/XREF-00984/XREF-00985/XREF-00986/XREF-00987/XREF-00988/XREF-00989/XREF-00990/XREF-00991/XREF-00992/XREF-00993/XREF-00994/XREF-00995/XREF-00996/XREF-00997/XREF-00998/XREF-00999/XREF-01000



TURNING MOVEMENT PLAN
 SCALE: 1" = 30'
 GRAPHIC SCALE
 SCALE: 1" = 30'



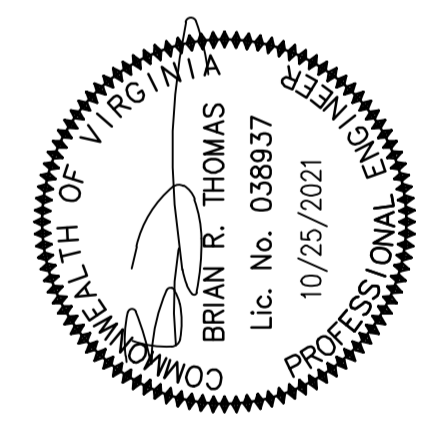
VEHICLE DETAIL
 SCALE: 1" = 10'



Pierce Tower Ladder 403
 Overall Length 46.770ft
 Overall Width 8.000ft
 Overall Body Height 10.432ft
 Min Body Ground Clearance 0.862ft
 Track Width 8.000ft
 Lock-to-lock time 6.00s
 Wall to Wall Turning Radius 45.000ft

GRAPHIC SCALE
 SCALE: 1" = 10'

TURNING MOVEMENTS: FIRE TRUCK
FAIRFAX PRESBYTERIAN CHURCH
 CITY OF FAIRFAX, VIRGINIA

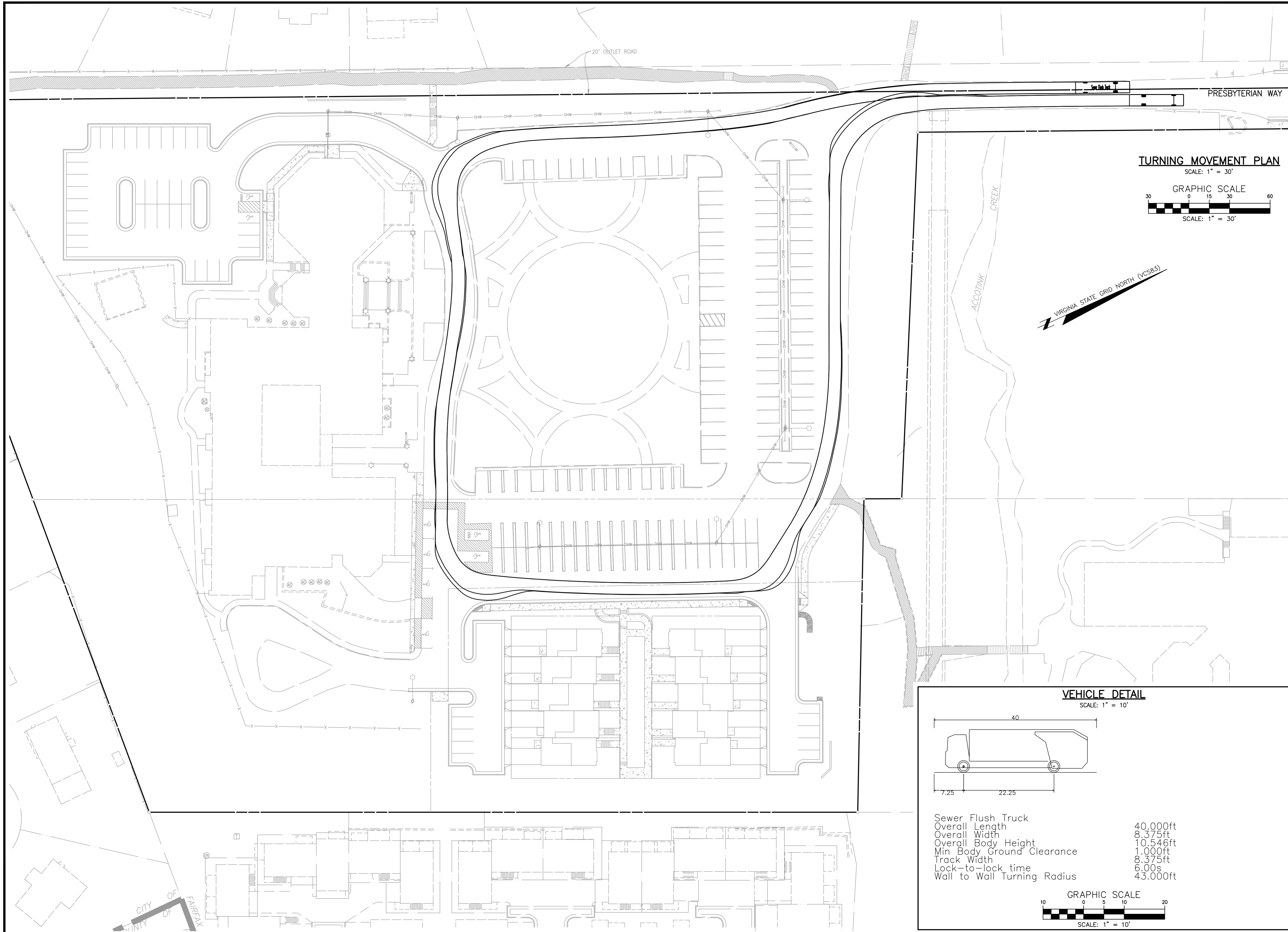


NO.	DATE	REVISION	APPROVED	DATE

DESIGN	DRAFT	JURS	DATE	SCALE

SHEET 16 OF 46
 PRJ NO: 2017-2570
 TYPE: MDP

CPJ Charles P. Johnson & Associates, Inc.
 Associates
 www.cpjva.com
 9999 Pender Dr., Ste. 210 Fairfax, VA 22030 703-585-7555 Fax: 703-273-8995
 www.cpjva.com
 Charlottesville, VA • Charlottesville, VA • Annapolis, MD • Greenbelt, MD • Frederick, MD • Fairfax, VA



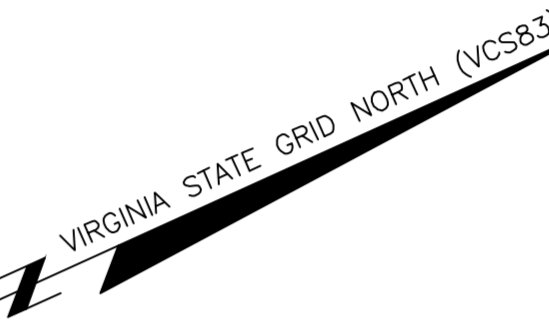
TURNING MOVEMENT PLAN

SCALE: 1" = 30'

GRAPHIC SCALE

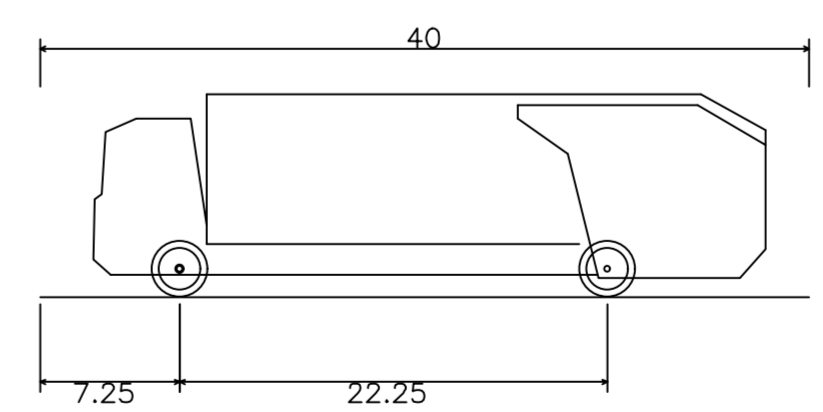


SCALE: 1" = 30'



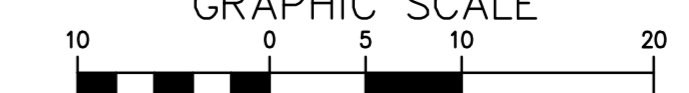
VEHICLE DETAIL

SCALE: 1" = 10'



Sewer Flush Truck	
Overall Length	40.000ft
Overall Width	8.375ft
Overall Body Height	10.546ft
Min Body Ground Clearance	1.000ft
Track Width	8.375ft
Lock-to-lock time	6.00s
Wall to Wall Turning Radius	43.000ft

GRAPHIC SCALE

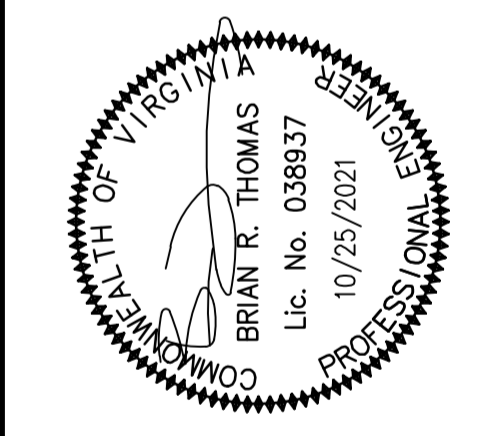


SCALE: 1" = 10'

TURNING MOVEMENTS: SEWER FLUSH TRUCK

FAIRFAX PRESBYTERIAN CHURCH

CITY OF FAIRFAX, VIRGINIA



DESIGN	DATE	SCALE
DRAFT	JUNE 2021	AS SHOWN
JURS	DATE	SCALE
APPROVED	JUNE 2021	AS SHOWN
HMF		

SHEET	OF
21	46
PRJ NO: 2017-2570	
TYPE: MDP	

NO. DATE REVISION PRIOR TO APPROVAL

CPJ Charles P. Johnson & Associates, Inc.
 Associates
 civil and environmental Engineers • Planners • Landscape Architects • Surveyors
 9909 Pender Dr., Ste. 210 Fairfax, VA 22030 703-585-7555 FAX: 703-273-8995
 www.cpj-engineers.com • Chantilly, VA • Alexandria, VA • Fairfax, VA