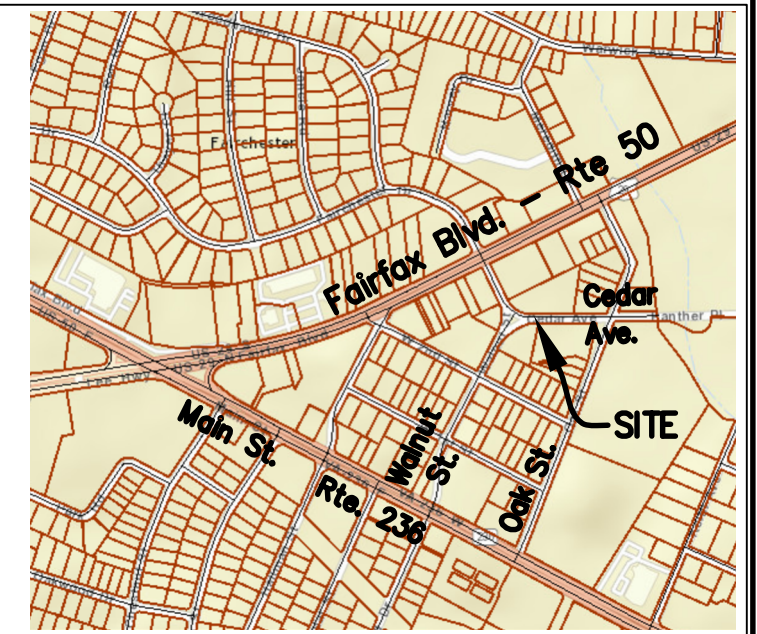


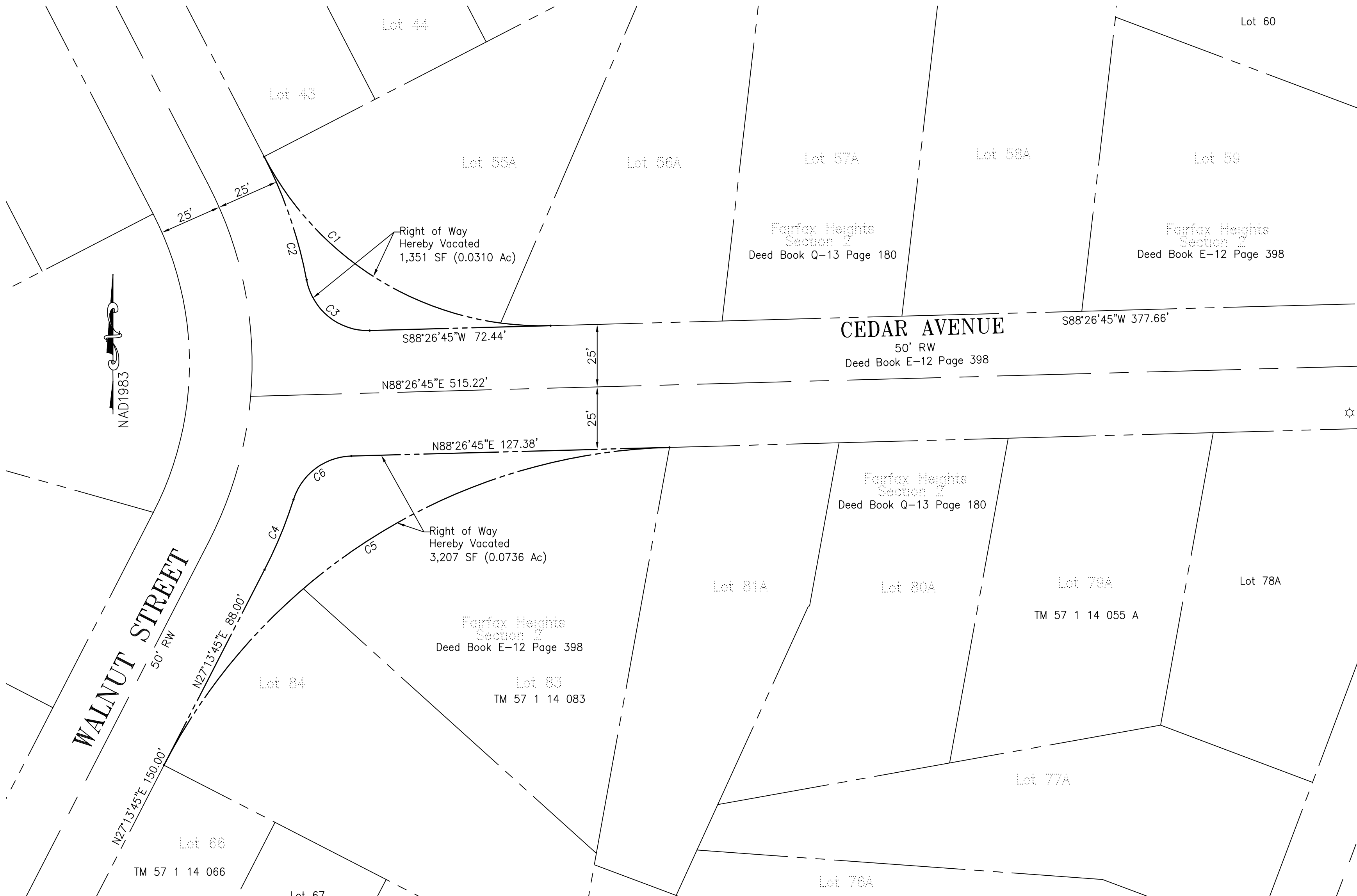
NOTES

1- THE PROPERTY SHOWN HERON IS LOCATED ON TM 057-1.
 2- THE BOUNDARY INFORMATION SHOWN HEREON IS TAKEN FROM AN ALTA SURVEY PERFORMED BY ATCS, PLC DATED JULY, 2015

CURVE TABLE					
CURVE	LENGTH	RADIUS	CHORD BEARING	CHORD	DELTA
C1	140.37'	125.20'	S59°26'09"E	133.13'	064°14'12"
C2	52.33'	180.35'	N19°00'00"W	52.15'	016°37'31"
C3	35.28'	25.00'	S51°07'15"E	32.43'	080°52'01"
C4	30.40'	180.35'	N22°24'01"E	30.36'	009°39'29"
C5	250.74'	234.69'	S57°50'11"W	238.98'	061°13'08"
C6	30.92'	25.00'	S53°00'31"W	28.99'	070°52'29"



VICINITY MAP
 SCALE 1"=2000'



PLAT SHOWING THE VACATION OF
 A PORTION OF
**WALNUT STREET &
 CEDAR AVENUE**
 Deed Book E-12 Page 398
 FAIRFAX CITY

Scale: 1" = 30' OCTOBER 2021

ATCS, P.L.C.

ENGINEERING • PLANNING • SURVEYING
 2553 Sunrise Valley Drive, Suite 200
 Herndon VA 20171
 (703) 430-7500 FAX (703) 430-0889

