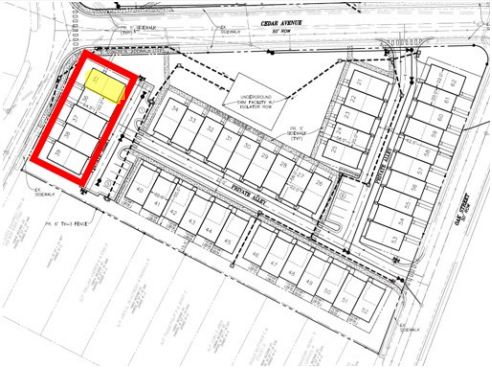




**22' (5-UNIT) BUILDING STREETSCAPE**  
 PULTE - NORTHEAST (BREEZEWAY)  
 (2466 - HALSTON)



# Lot 35



Lot 35

**BRICK VENEER**  
HAMILTON



**FRONT DOOR/SHUTTERS**  
SW6994 GREENBLACK



**BRICK MORTAR**  
ARCTIC WHITE



**HARDIE SIDING**  
GREY SLATE



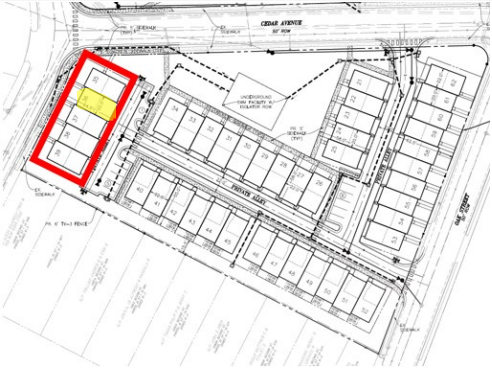
**BRICK ACCENT**  
BLUE RIDGE REGENT



**VINYL WINDOWS**  
WHITE

**SYNTHETIC PANEL & TRIM**  
WHITE

# Lot 36



Lot 36

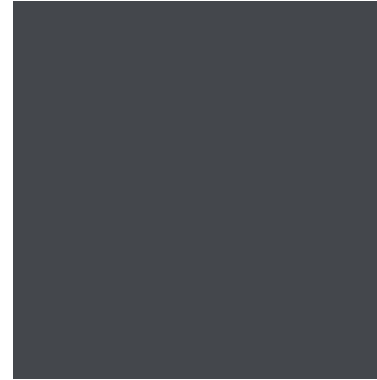
**STONE VENEER**  
YORK LIMESTONE



**HARDIE SIDING**  
BOOTHBAY BLUE



**FRONT DOOR/SHUTTERS**  
SW7076 CYBER SPACE



**STONE MORTAR**  
TO MATCH STONE

**PRE-CAST**  
RAWHIDE REGENCY

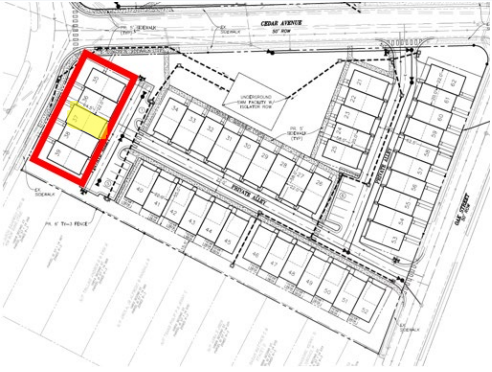


TUMBLED AT STONE  
SMOOTH FACE AT BRICK

**VINYL WINDOWS**  
WHITE

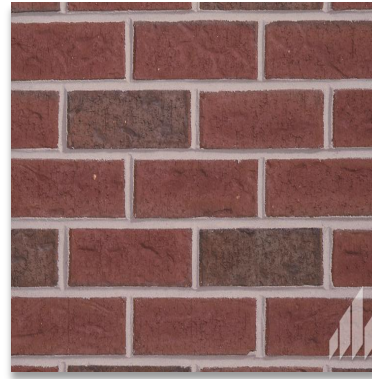
**SYNTHETIC PANEL & TRIM**  
WHITE

# Lot 37



Lot 37

**BRICK VENEER**  
VIRGINIA HIGHLANDS



**FRONT DOOR**  
SW7075 WEB GRAY



**BRICK MORTAR**  
ROANOKE STRAW



**HARDIE SIDING**  
PEARL GREY



**BRICK ACCENT**  
SPALDING TUDOR

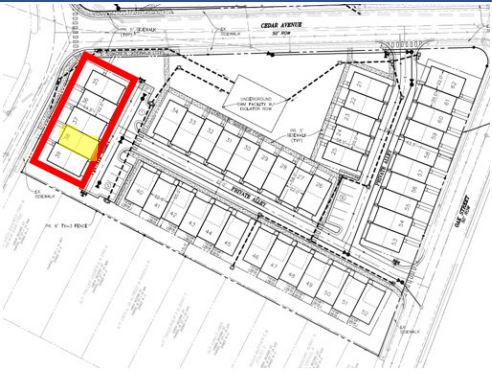


**VINYL WINDOWS**  
WHITE

**SYNTHETIC PANEL & TRIM**  
WHITE



# Lot 38



lot 38

**BRICK VENEER**  
SPALDING TUDOR



**HARDIE SIDING**  
KHAKI BROWN



**FRONT DOOR**  
SW6222 RIVERWAY



**PRE-CAST**  
RAWHIDE REGENCY



TUMBLER AT STONE  
SMOOTH FACE AT BRICK

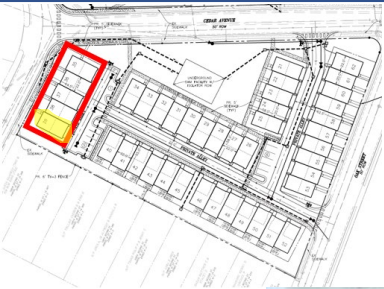
**VINYL WINDOWS**  
WHITE

**SYNTHETIC PANEL & TRIM**  
WHITE

**BRICK MORTAR**  
ROANOKE STRAW



# Lot 39

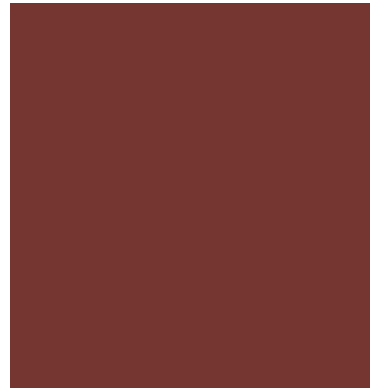


lot 39

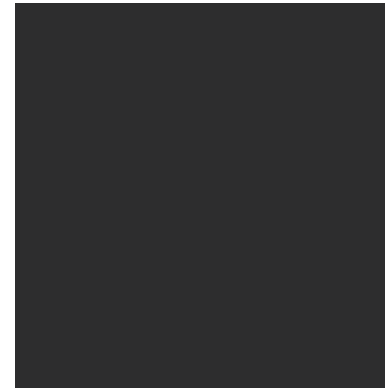
**BRICK VENEER**  
SPALDING TUDOR



**FRONT DOOR**  
SW7592 CRABBY APPLE



**SHUTTERS**  
SW6258 TRICON BLACK



**BRICK MORTAR**  
ROANOKE STRAW



**HARDIE SIDING**  
IRON GREY



**BRICK ACCENT**  
DUTCH CHOCOLATE



**VINYL WINDOWS**  
WHITE

**SYNTHETIC PANEL & TRIM**  
WHITE





lot 45

lot 44

lot 43

lot 42

lot 41

lot 40

22' (6-UNIT) BUILDING STREETSAPE  
 PULTE - NORTHEAST (BREEZEWAY)  
 (2405 - GRANTON)





lot 40      lot 41      lot 42      lot 43      lot 44      lot 45  
 REAR ELEVATION



45'-0" +/-

40'-0" +/-

10'-0"

4'-8"

9'-2"

lot 40 (HIGH VIS END CAPTION) ← 40'-8"

22' (6-UNIT) BUILDING STREETSAPE

PULTE - NORTHEAST (BREEZEWAY)  
 (2465 - GRANTON)



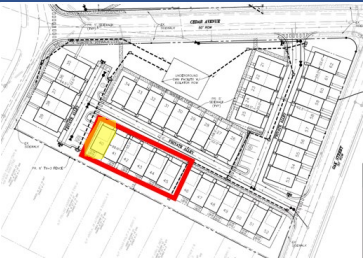
(c) Copyright 2019 PulteGroup, Inc. SCALE: 1/16" = 1'-0"

DATE: 11/30/2021

NOTE: Final details and detail dimensions are subject to change based on final construction documents at time of permit submission



# Lot 40

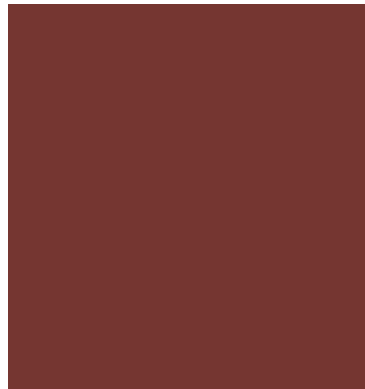


Lot 40

**BRICK VENEER**  
SPALDING TUDOR



**FRONT DOOR**  
SW7592 CRABBY APPLE



**SHUTTERS**  
SW6258 TRICON BLACK



**HARDIE SIDING**  
IRON GREY



**PRE-CAST**  
RAWHIDE REGENCY



TUMBLED AT STONE  
SMOOTH FACE AT BRICK

**VINYL WINDOWS**  
WHITE

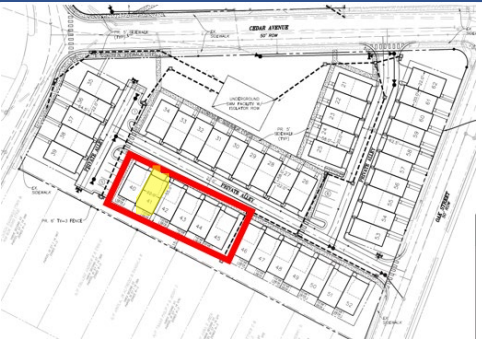
**SYNTHETIC PANEL & TRIM**  
WHITE

**BRICK MORTAR**  
ROANOKE STRAW





# Lot 41

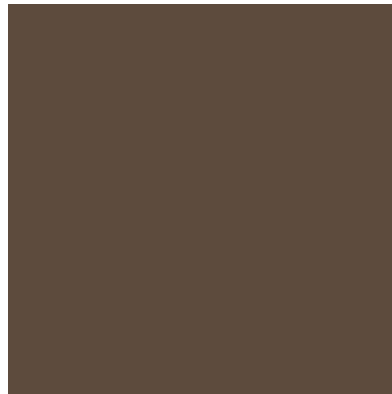


Lot 41

**BRICK VENEER**  
VIRGINIA HIGHLANDS



**FRONT DOOR**  
SW6083 SABLE



**BRICK MORTAR**  
ROANOKE STRAW



**HARDIE SIDING**  
BOOTHBAY BLUE



**BRICK ACCENT**  
SPALDING TUDOR

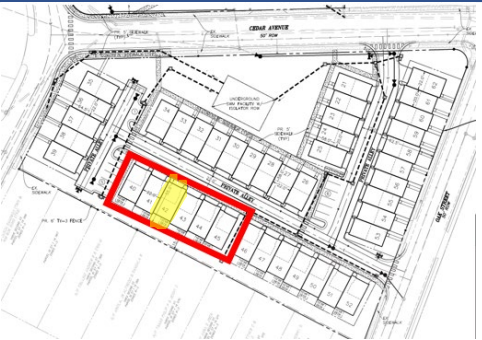


**VINYL WINDOWS**  
WHITE

**SYNTHETIC PANEL & TRIM**  
WHITE



# Lot 42



Lot 42

**STONE VENEER**  
YORK LIMESTONE



**HARDIE SIDING**  
NAVAJO BEIGE



**FRONT DOOR**  
SW7048 URBAN BRONZE



**STONE MORTAR**  
TO MATCH STONE

**PRE-CAST**  
RAWHIDE REGENCY



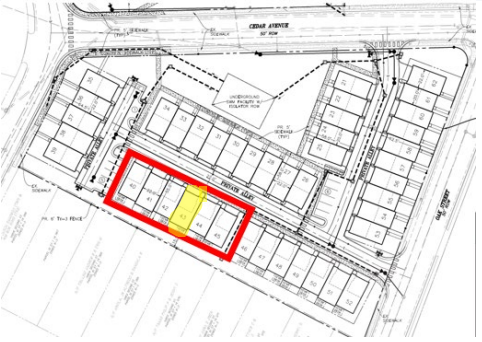
TUMBLED AT STONE  
SMOOTH FACE AT BRICK

**VINYL WINDOWS**  
WHITE

**SYNTHETIC PANEL & TRIM**  
WHITE



# Lot 43

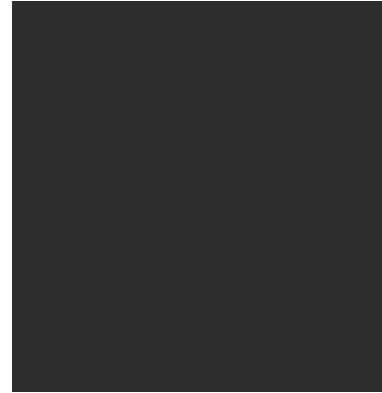


Lot 43

**BRICK VENEER**  
VIRGINIA HIGHLANDS



**FRONT DOOR/SHUTTERS**  
SW6258 TRICON BLACK



**BRICK MORTAR**  
ROANOKE STRAW



**HARDIE SIDING**  
MONTEREY TAUPE



**BRICK ACCENT**  
SPALDING TUDOR

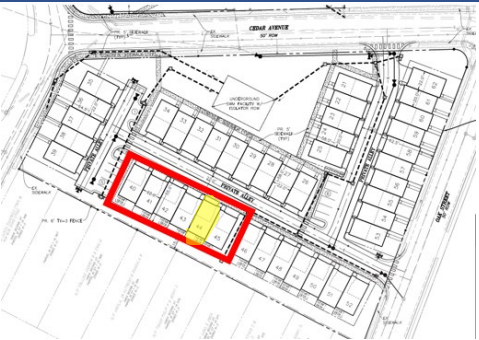


**VINYL WINDOWS**  
WHITE

**SYNTHETIC PANEL & TRIM**  
WHITE



# Lot 44

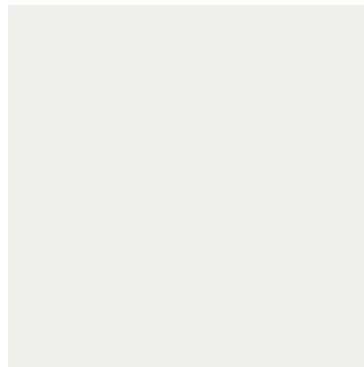


lot 44

**STONE VENEER**  
BRIDGEPORT LIMESTONE



**FRONT DOOR/SHUTTERS**  
SW7006 EXTRA WHITE



**STONE MORTAR**  
TO MATCH STONE

**HARDIE SIDING**  
GREY SLATE



**PRE-CAST**  
RAWHIDE REGENCY



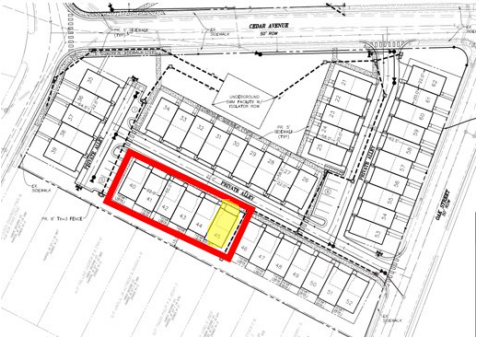
TUMBLED AT STONE  
SMOOTH FACE AT BRICK

**VINYL WINDOWS**  
WHITE

**SYNTHETIC PANEL & TRIM**  
WHITE



# Lot 45



Lot 45

**BRICK VENEER**  
SPALDING TUDOR



**FRONT DOOR/SHUTTERS**  
SW6174 ANDIRON



**BRICK MORTAR**  
ROANOKE STRAW



**HARDIE SIDING**  
KHAKI BROWN



**BRICK ACCENT**  
DUTCH CHOCOLATE



**VINYL WINDOWS**  
WHITE

**SYNTHETIC PANEL & TRIM**  
WHITE