

**FY 21 /22 Transportation Funding  
Application Overview  
&  
Transportation Alternatives Public  
Hearing**

**September 10, 2019**

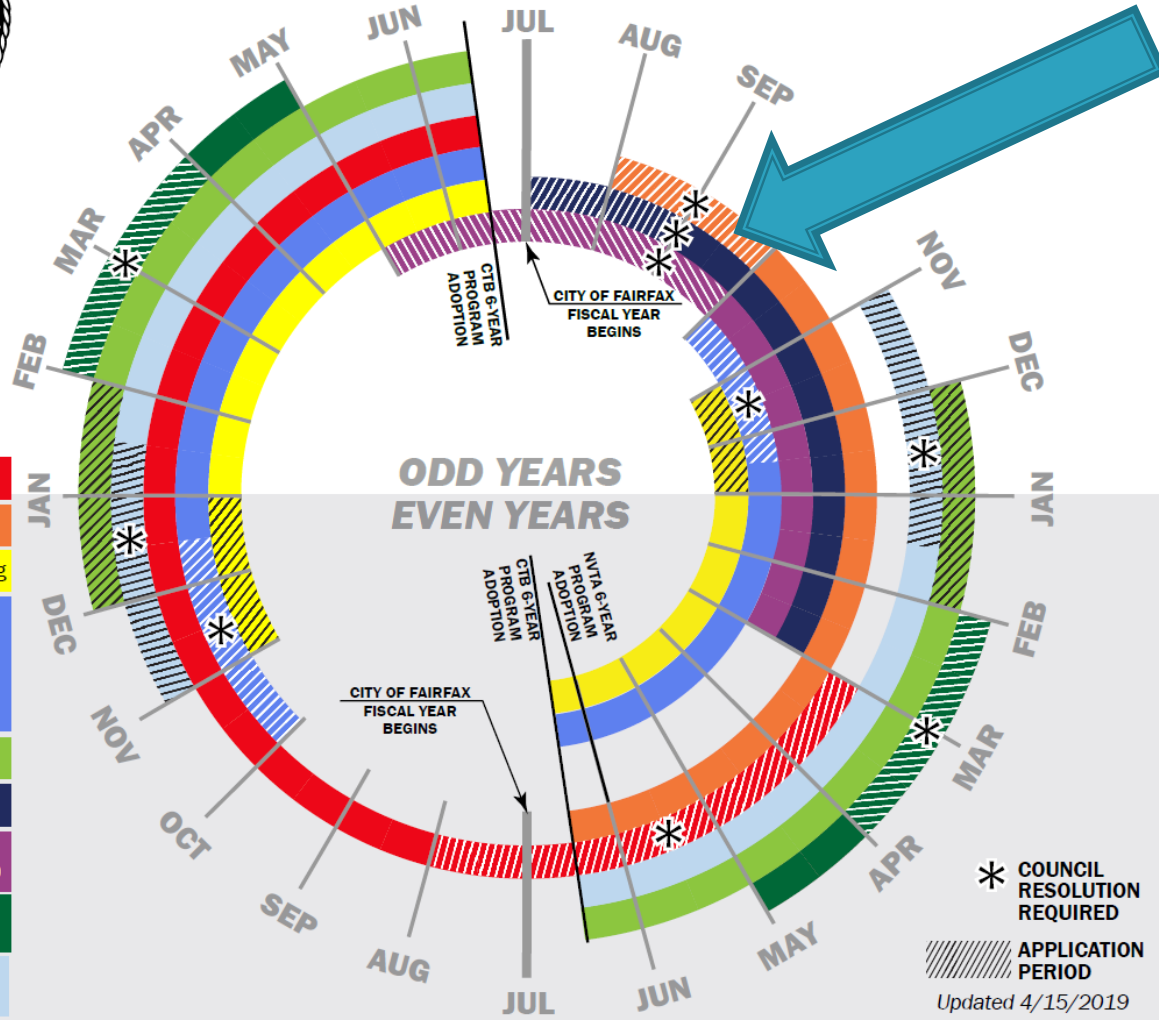




# 2-YEAR TRANSPORTATION FUNDING TIMELINE

## LEGEND

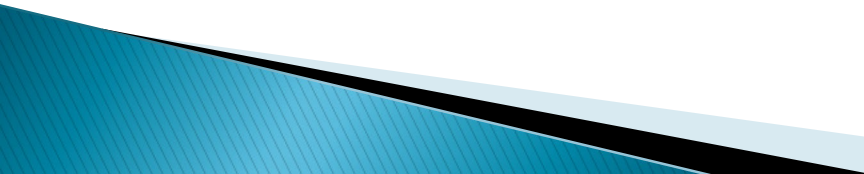
Smart Scale
Revenue Sharing
Primary Extension Paving
Congestion Mitigation and Air Quality (CMAQ)
Regional Surface Transportation Program (RSTP)
Transit Assistance
NVTA 70% Funds
Transportation Alternatives Program (TAP)
Transportation/Land-Use Connections (TLC)
I-66 Inside the Beltway Toll Revenue



# Fall Funding Applications

- ▶ NVRTA 70% Regional Funds
  - ▶ Revenue Sharing (VDOT 50%, local 50%)
  - ▶ Transportation Alternatives (Federal 80%, local 20%)
- 


# NVTA 70% Funding

- ▶ Applications open for FY 24 and 25
  - ▶ Applications due September 27
  - ▶ Focus on regional projects with congestion mitigation impact
    - The Authority must give priority to projects with the highest Congestion Relative to Cost (CRRC)
- 

# FY 24/25 NVRTA 70% Applications

1. Eaton Place/Chain Bridge Road Intersection Improvements \$11.6M
  2. Old Lee Highway Multimodal Improvements: \$8M
  3. Government Center Parkway Extension: not to exceed \$3.6M
  4. Roadway Network in Northfax West: not to exceed \$2.4M
  5. Jermantown Road/Route 29 Intersection Improvements: not to exceed \$1.3M
- Total of approximately \$27M in funding
  - No local match required
  - For projects noted with \*, funding may serve as local match to Revenue Sharing funding, if received

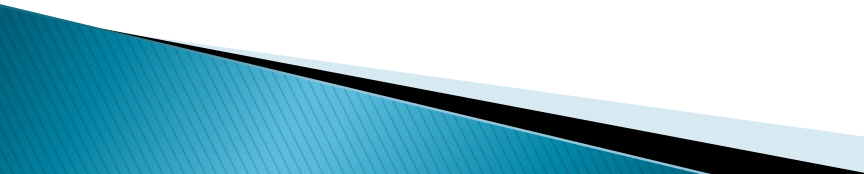
# Revenue Sharing Program

- ▶ Applications open for FY 21 and FY 22
  - ▶ Pre-applications due July 1; applications due Oct 1
  - ▶ \$5M maximum per fiscal year (\$10M total)
  - ▶ Requires 50% local match
    - C&I
    - 30% NVTA
    - 70% NVTA
- 

# FY 21 /22 Revenue Sharing Applications

1. Old Lee Highway\*: \$3M
  2. Government Center Parkway Extension\*: \$1.8M
  3. University Drive Extension: \$0.8M
  4. Roadway Network in Northfax West\*: \$2.4M
  5. Jermantown Road/Route 29 Intersection Improvements\*: \$0.65M
  6. Sager Avenue Culvert and Pedestrian Improvements: \$0.9M
- Total of approximately \$10M in funding
  - 50% match required
  - For projects noted with \*, funding to be matched by NVTAs 70% funds, if received.
  - Total of \$7.7M potentially matched by outside funding

# Transportation Alternatives

- ▶ Federal Funding, requires a 20% local match
  - ▶ Funding provided on a reimbursement basis
  - ▶ Biennial Call for Projects, odd-numbered calendar years
  - ▶ Allocations made for the two subsequent fiscal years (FY 21 and FY 22)
  - ▶ Maximum request of \$1M per project per year
- 



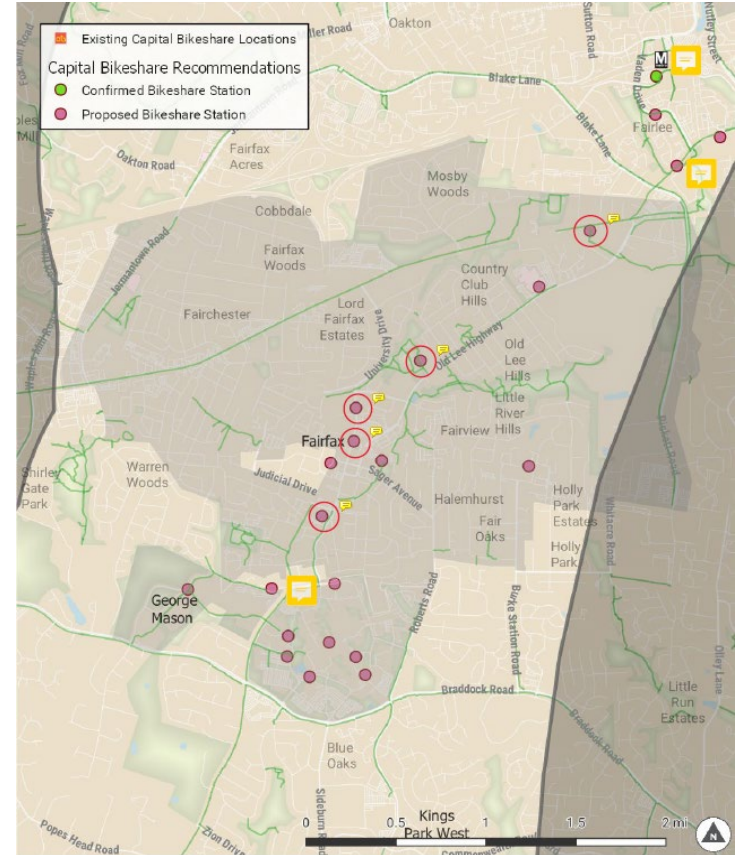
# Sager Ave Sidewalk Project Cost



- ▶ 2020 Project Cost of \$530,000
  - Applying in FY 19, but anticipated CN in FY 21
  - TA request for \$424,000
  - Local match requirement of \$106,000
  - Cost includes remaining engineering cost, contingency, construction, inspection and oversight

# Bike Share Project Cost

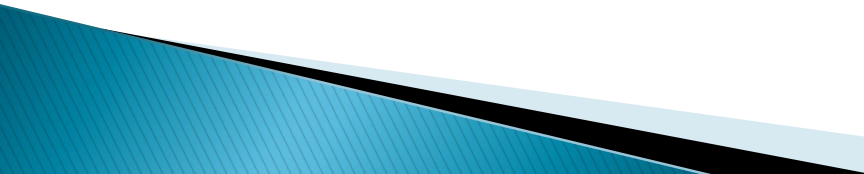
- ▶ 2020 Project Cost of \$421,000
  - Applying in FY 19, but anticipated CN in FY 22
  - TA request for \$336,800
  - Local match requirement of \$84,200
  - Cost includes engineering cost, right of way, acquisition and installation of 5 stations, bikes, and spare parts



# Bike Share Project Ongoing Costs

- ▶ Bike Share system requires additional funds for operation and maintenance (O&M)
- ▶ O&M costs based on system size and are offset by user revenues
- ▶ Estimated net annual O&M costs to City of \$40,000–\$50,000 (total O&M minus user revenues)
  - City costs may be further reduced with sponsorships
  - Revenues may vary with seasonal and regional factors

# Application Submittal

- ▶ Required public information meeting
  - ▶ Resolution of support including commitment to provide the 20% match and provide for future maintenance of the project
  - ▶ Project must be under construction within four years of initial funding allocation
  - ▶ Awards will be made in June 2020
- 

# Fall Funding Applications

- ▶ NVRTA 70% Regional Funds – Sept 27
  - ▶ Revenue Sharing (VDOT 50%, local 50%) – Oct 1
  - ▶ Transportation Alternatives (Federal 80%, local 20%) – Oct 1
- 

**Questions / Comments?**

