
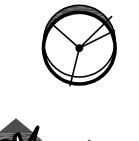
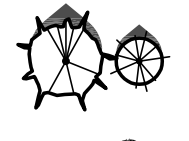


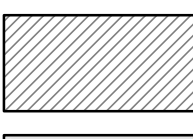



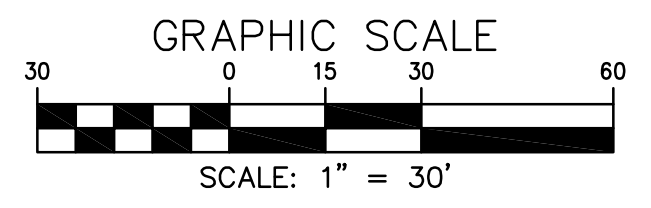
**LEGEND**

-  SHADE TREE
-  ORNAMENTAL/UNDERSTORY TREE
-  EVERGREEN TREE
-  DECIDUOUS SHRUB
-  EVERGREEN SHRUB
-  TREE SAVE AREA
-  TRANSITIONAL YARD

LANDSCAPE EXHIBIT  
**FAIRFAX PRESBYTERIAN CHURCH**  
 CITY OF FAIRFAX, VIRGINIA

SCALE : 1" = 10'  
 DATE : JANUARY 2022

**CPJ** Charles P. Johnson & Associates, Inc.  
 Civil and Environmental Engineers - Planners - Landscape Architects - Surveyors  
 3959 Pender Dr., Ste. 210 Fairfax, VA 22030 703-385-7555 Fax: 703-273-8595  
 www.cpj.com Silver Spring, MD • Gaithersburg, MD • Annapolis, MD • College Park, MD • Frederick, MD • Fairfax, VA

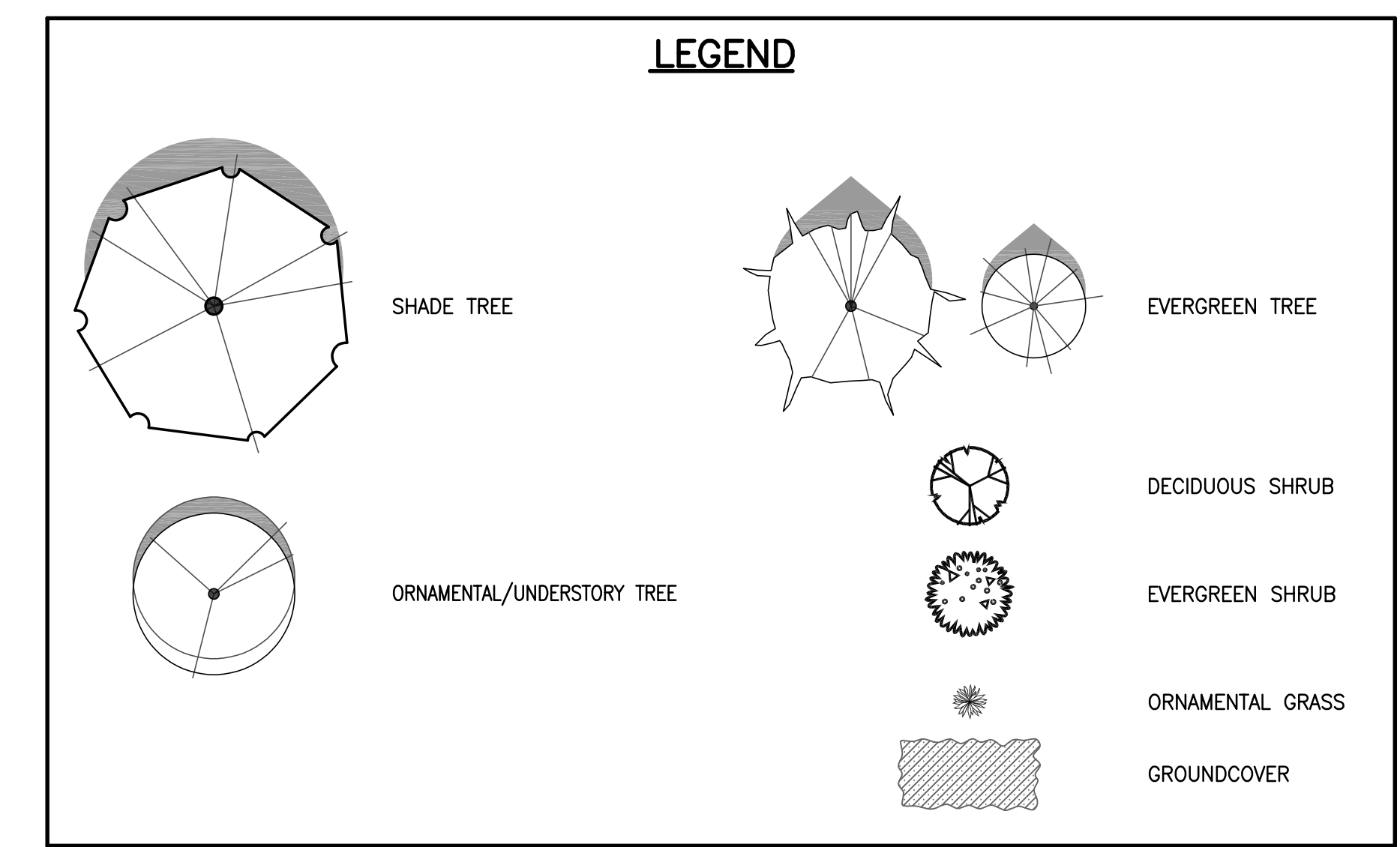
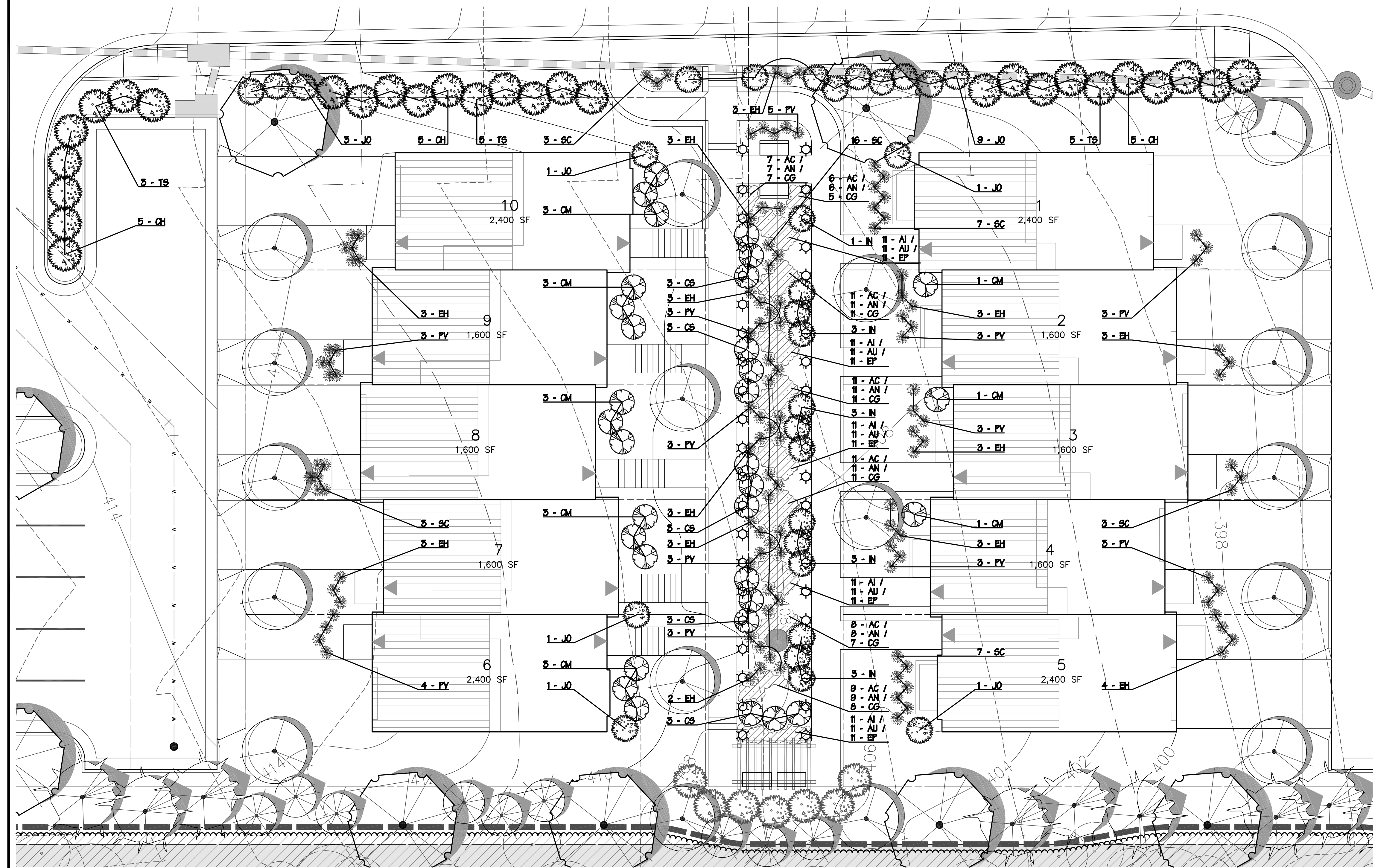


Last Saved 2/7/2022 1:39 PM Sheet: N:\2017-2510\VMC\00-EG601

### 10-YEAR TREE COVER CALCULATIONS

<b>TREE COVER REQUIRED</b>	
TOTAL SITE AREA	359,435 S.F.
PERCENTAGE OF TREE COVER REQUIRED	10%
TOTAL TREE COVER REQUIRED	35,944 S.F.
<b>TREE COVER PROVIDED</b>	
AREA OF EXISTING TREES TO BE PRESERVED	138,450 S.F.±
AREA OF TREES TO BE PLANTED	11,050 S.F.±
TOTAL TREE COVER PROVIDED (±41% OF SITE AREA)	149,500 S.F.±

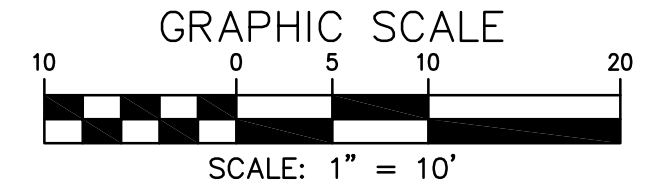
PLANT SCHEDULE						
SYMBOL	QTY.	BOTANICAL NAME	COMMON NAME	SIZE	ROOT	TOTAL CANOPY (SF)
<b>SHADE TREES</b>						
AR	7	ACER RUBRUM	RED MAPLE	3.5" CAL.	B&B	1,750
GB	5	GINKGO BILOBA (MALE ONLY)	GINKGO	3.5" CAL.	B&B	1,250
QC	8	QUERCUS COCCINEA	SCARLET OAK	3.5" CAL.	B&B	2,000
TA	5	TILIA AMERICANA	BASSWOOD	3.5" CAL.	B&B	1,250
<b>ORNAMENTAL TREES</b>						
AL	6	AMELANCHIER LAEVIS	ALLEGHENY SERVICEBERRY	2" CAL.	B&B	600
CA	5	CARPINUS CAROLINIANA	AMERICAN HORNBEAM	2" CAL.	B&B	500
CC	6	CERCIS CANADENSIS	EASTERN REDBUD	2" CAL.	B&B	600
CV	6	CHIONANTHUS VIRGINICUS	FRINGETREE	2" CAL.	B&B	600
OA	5	OXYDENDRUM ARBOREUM	SOURWOOD	2" CAL.	B&B	500
<b>EVERGREEN TREES</b>						
IO	8	ILEX OPACA	AMERICAN HOLLY	8' HGT.	B&B	800
JV	8	JUNIPERUS VIRGINIANA	EASTERN REDCEDAR	8' HGT.	B&B	800
TO	10	THUJA OCCIDENTALIS 'NIGRA'	DARK GREEN AMERICAN ARBORVITAE	6' HGT.	B&B	400
<b>SHRUBS &amp; GRASSES</b>						
CM	18	CALLICARPA AMERICANA	AMERICAN BEAUTYBERRY	24-30" HGT.	CONT.	
CH	15	CHAMAECYPARIS THYOIDES 'HEATHERBUN'	HEATHERBUN ATLANTIC WHITE CYPRESS	30-36" HGT.	CONT.	
CS	15	CORNUS SERICEA 'ALLEMAN'S COMPACT'	DWARF RED TWIG DOGWOOD	24-30" HGT.	CONT.	
EH	39	ELYMUS HYSTRIX	BOTTLEBRUSH GRASS	18-24" HGT.	CONT.	
IA	8	ILEX VERTICILLATA 'AFTERGLOW'	AFTERGLOW WINTERBERRY	24-30" HGT.	CONT.	
IN	13	ILEX VOMITORIA 'NANA'	DWARF YAUPON HOLLY	24-30" HGT.	CONT.	
JO	17	JUNIPERUS VIRGINIANA 'GREY OWL'	GREY OWL JUNIPER	24-30" HGT.	CONT.	
PV	39	PANICUM VIRGATUM	SWITCH GRASS	18-24" HGT.	CONT.	
RC	7	RHODODENDRON CATAWBIENSE	CATAWBA RHODODENDRON	24-30" HGT.	CONT.	
SC	39	SCHIZACHYRIUM SCOPARUM	LITTLE BLUESTEM	18-24" HGT.	CONT.	
TS	13	THUJA OCCIDENTALIS 'SMARAGD'	EMERALD GREEN ARBORVITAE	30-36" HGT.	CONT.	
VS	10	VIBURNUM TRILOBUM 'SPRING GREEN'	SPRING GREEN AMERICAN CRANBERRYBUSH	24-30" HGT.	CONT.	
<b>PERENNIALS/GROUND COVER</b>						
AC	63	AQUILEGIA CANADENSIS	EASTERN COLUMBINE	12" O.C.	FLATS	
AU	55	ARCTOSTAPHYLOS UVA-UNI	BEARBERRY	12" O.C.	FLATS	
AI	55	ASCLEPIAS INCARNATA	SWAMP MILKWEED	12" O.C.	FLATS	
AN	63	ASTER NOVAE-ANGLIAE	NEW ENGLAND ASTER	12" O.C.	FLATS	
CG	60	CHRYSOGONUM VIRGINIANUM	GREEN-AND-GOLD	12" O.C.	FLATS	
EP	55	ECHINACEA PURPUREA	CONEFLOWER	12" O.C.	FLATS	
<b>TOTAL 10-YEAR CANOPY</b>						<b>11,050</b>



LANDSCAPE EXHIBIT  
**FAIRFAX PRESBYTERIAN CHURCH**  
 CITY OF FAIRFAX, VIRGINIA

SCALE : 1" = 10'  
 DATE : JANUARY 2022

**CPJ** Charles P. Johnson & Associates, Inc.  
 Civil and Environmental Engineers - Planners - Landscape Architects - Surveyors  
 3959 Pender Dr., Ste. 210 Fairfax, VA 22030 703-385-7555 Fax: 703-273-8595  
 www.cpj.com • Silver Spring, MD • Gaithersburg, MD • Annapolis, MD • College Park, MD • Frederick, MD • Fairfax, VA



SHEET	OF
2	2

Last Saved: 2/7/2022 1:41 PM Sheet: N:\2017-2570\DWG\00-EG601