

**LEGEND:**

BUS STOP	
BUS STOP W/ SHELTER	
PROPOSED CROSSWALK	
EXISTING CROSSWALK	
PROPOSED STOP BAR	

**EARTH TECH**  
 675 N. Washington St., Ste. 300  
 Alexandria, VA 22314

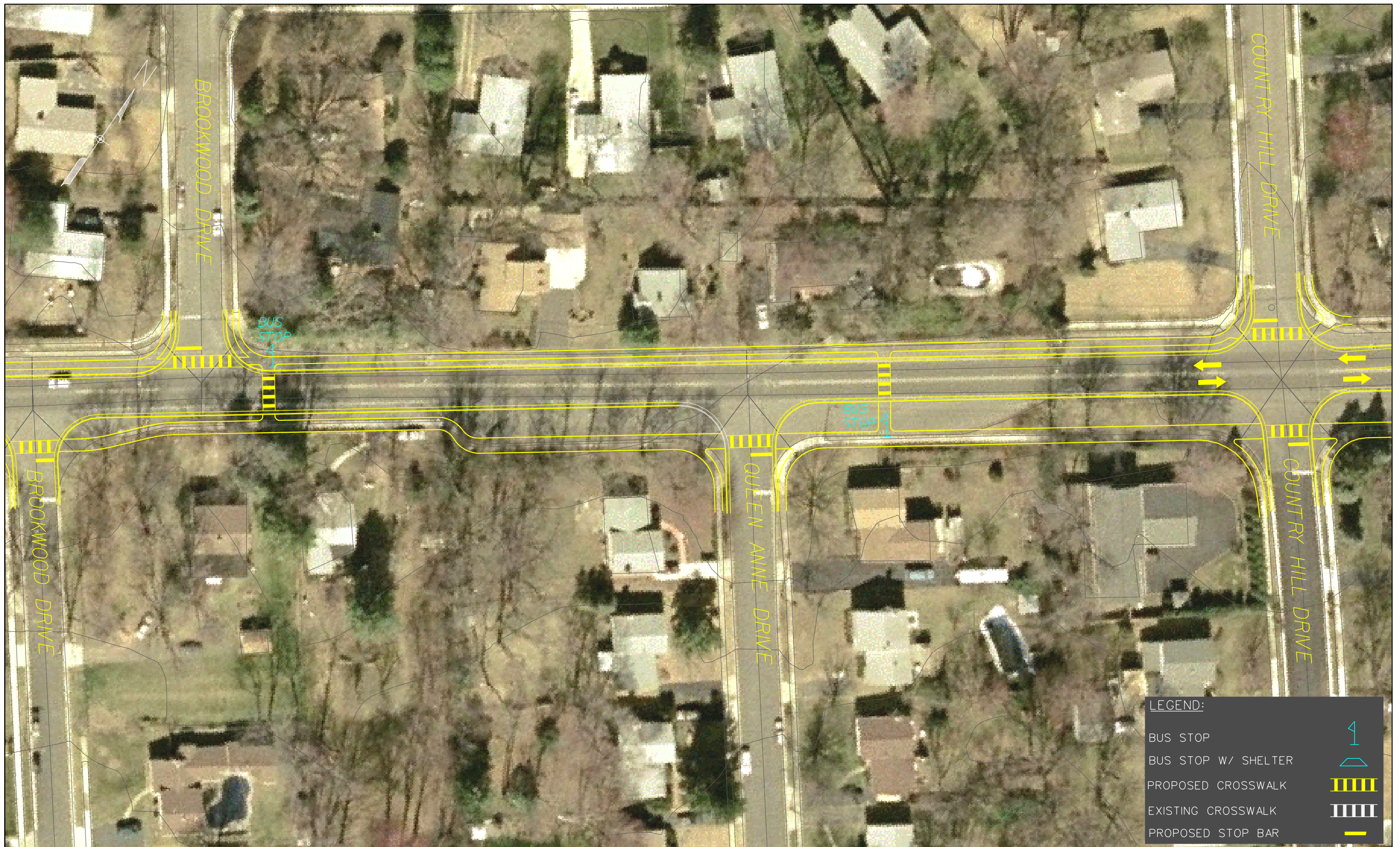
**OLD LEE HIGHWAY  
 TRANSPORTATION STUDY**

Scale: 1" = 60'

April, 2005

**RECOMMENDED SCENARIO**

Sheet 4 of 9





**LEGEND:**

BUS STOP	
BUS STOP W/ SHELTER	
PROPOSED CROSSWALK	
EXISTING CROSSWALK	
PROPOSED STOP BAR	

**EARTH TECH**  
 675 N. Washington St., Ste. 300  
 Alexandria, VA 22314

**OLD LEE HIGHWAY  
 TRANSPORTATION STUDY**

Scale: 1" = 60'

April, 2005

**RECOMMENDED SCENARIO**

Sheet 6 of 9