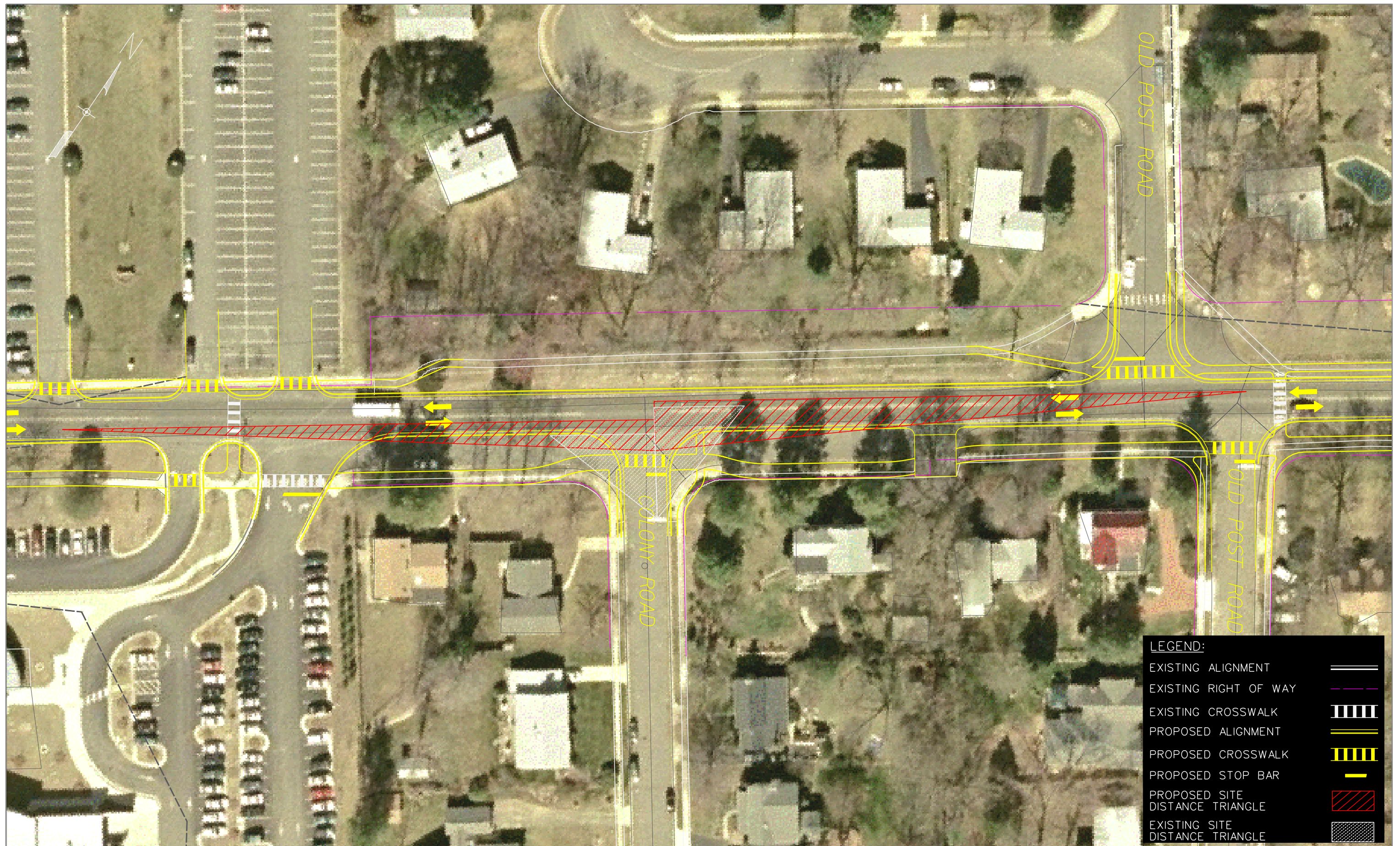




OLD LEE HIGHWAY TRANSPORTATION STUDY CITY OF FAIRFAX

APPENDIX C – SIGHT DISTANCE ANALYSIS



LEGEND:

EXISTING ALIGNMENT	==
EXISTING RIGHT OF WAY	---
EXISTING CROSSWALK	
PROPOSED ALIGNMENT	==
PROPOSED CROSSWALK	
PROPOSED STOP BAR	—
PROPOSED SITE DISTANCE TRIANGLE	▨
EXISTING SITE DISTANCE TRIANGLE	▨

EARTH  TECH

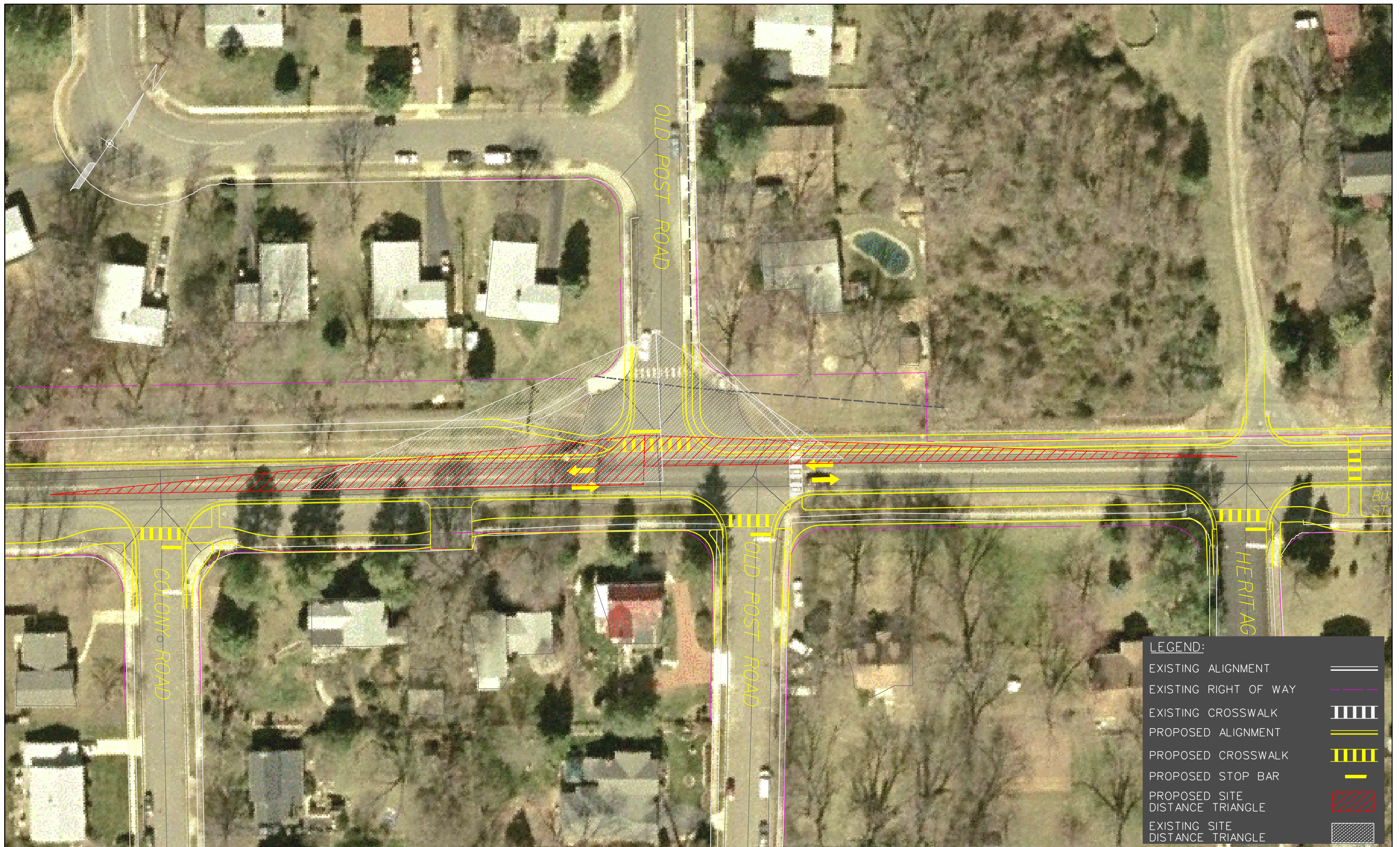
675 N. Washington St., Ste. 300
Alexandria, VA 22314

**OLD LEE HIGHWAY
TRANSPORTATION STUDY**

Scale: 1" = 60'

April, 2005

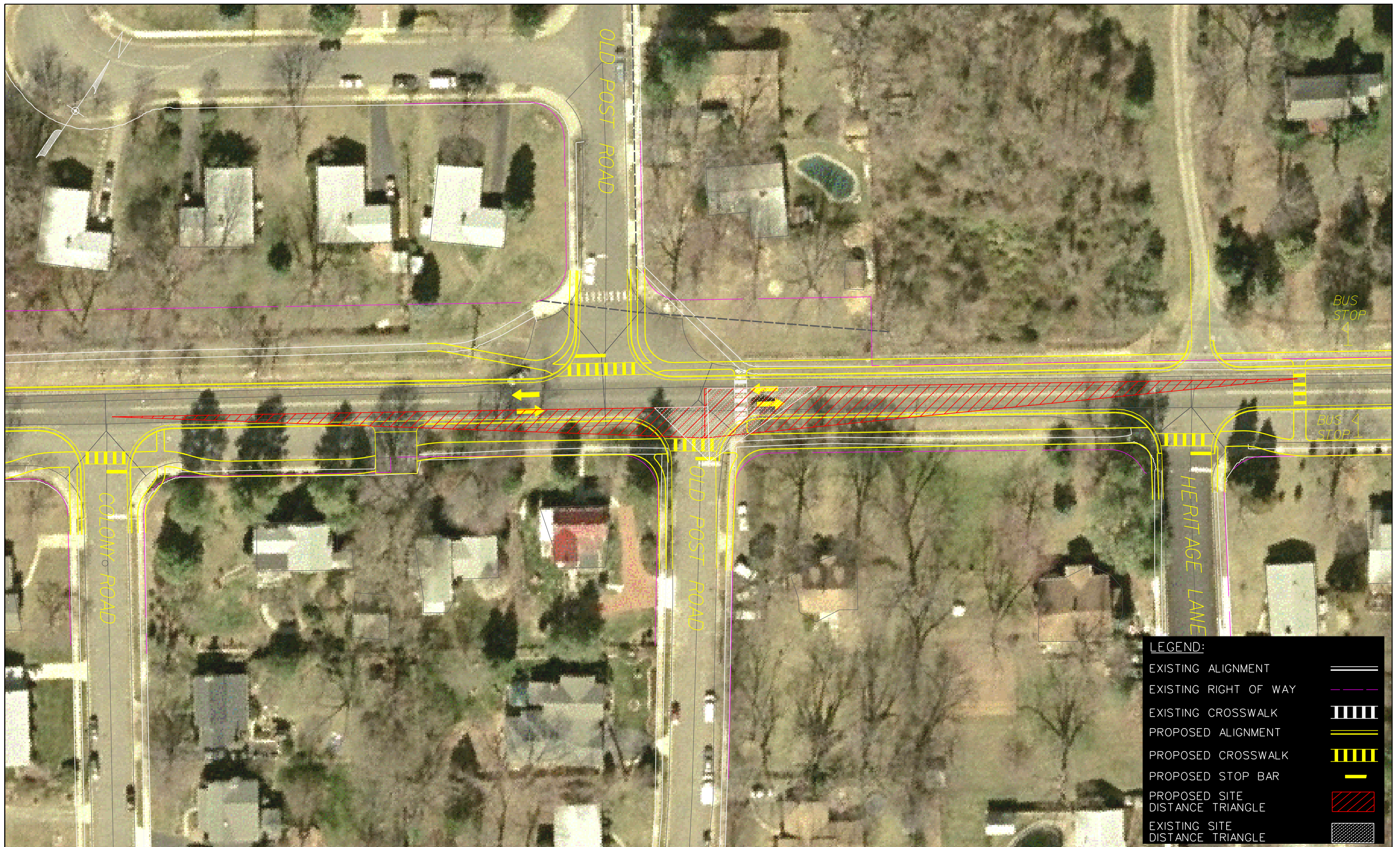
**COLONY ROAD
SITE DISTANCE ISSUES**



EARTH  TECH
 675 N. Washington St., Ste. 300
 Alexandria, VA 22314

**OLD LEE HIGHWAY
 TRANSPORTATION STUDY**
 Scale: 1" = 60' April, 2005

**OLD POST ROAD (N.)
 SITE DISTANCE ISSUES**



LEGEND:

EXISTING ALIGNMENT	==
EXISTING RIGHT OF WAY	---
EXISTING CROSSWALK	
PROPOSED ALIGNMENT	==
PROPOSED CROSSWALK	
PROPOSED STOP BAR	—
PROPOSED SITE DISTANCE TRIANGLE	▨
EXISTING SITE DISTANCE TRIANGLE	▩

EARTH  TECH
 675 N. Washington St., Ste. 300
 Alexandria, VA 22314

**OLD LEE HIGHWAY
 TRANSPORTATION STUDY**

Scale: 1" = 60'

April, 2005

**OLD POST ROAD (S.)
 SITE DISTANCE ISSUES**