

# Chain Bridge Road – Eaton Place Intersection Improvements

Community Meetings  
May 2022



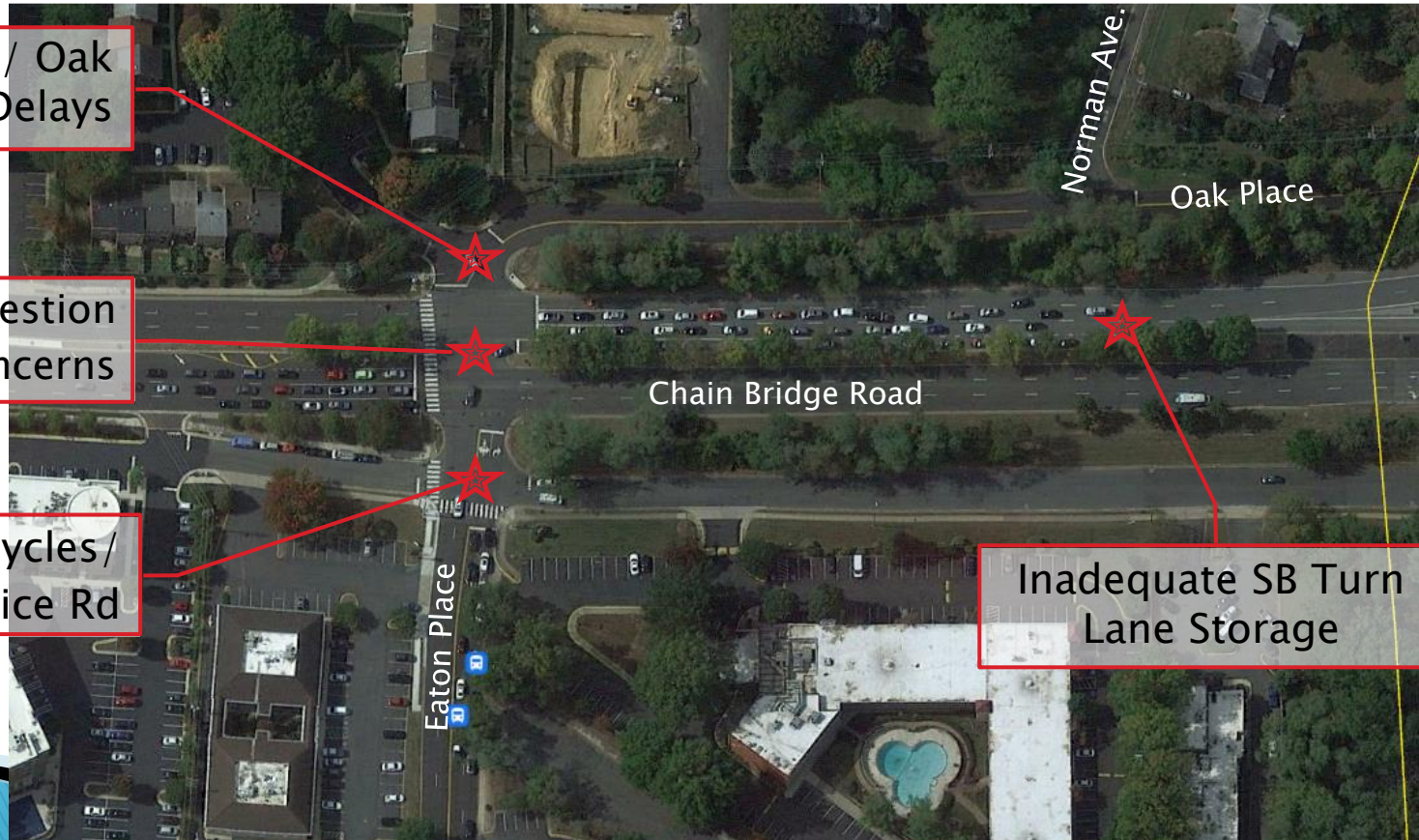
# Current Challenges

Assembly / Oak  
Conflicts & Delays

Overall Congestion  
& Safety Concerns

Long Signal Cycles/  
Delay for Service Rd

Inadequate SB Turn  
Lane Storage





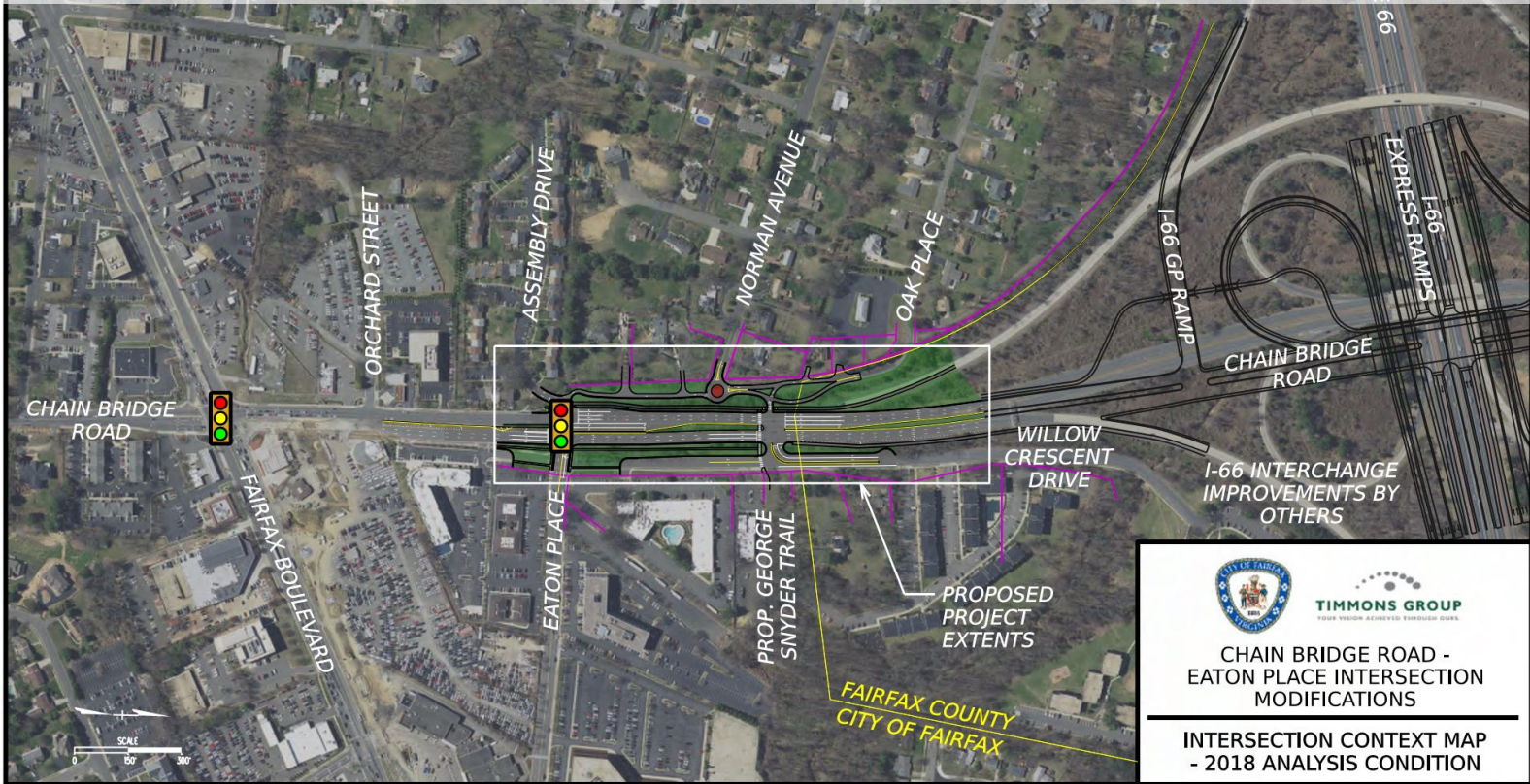
# Two-Lane Roundabout Concept

## Eaton Place/Chain Bridge Road Intersection Improvements



# 2018 Roundabout Plan

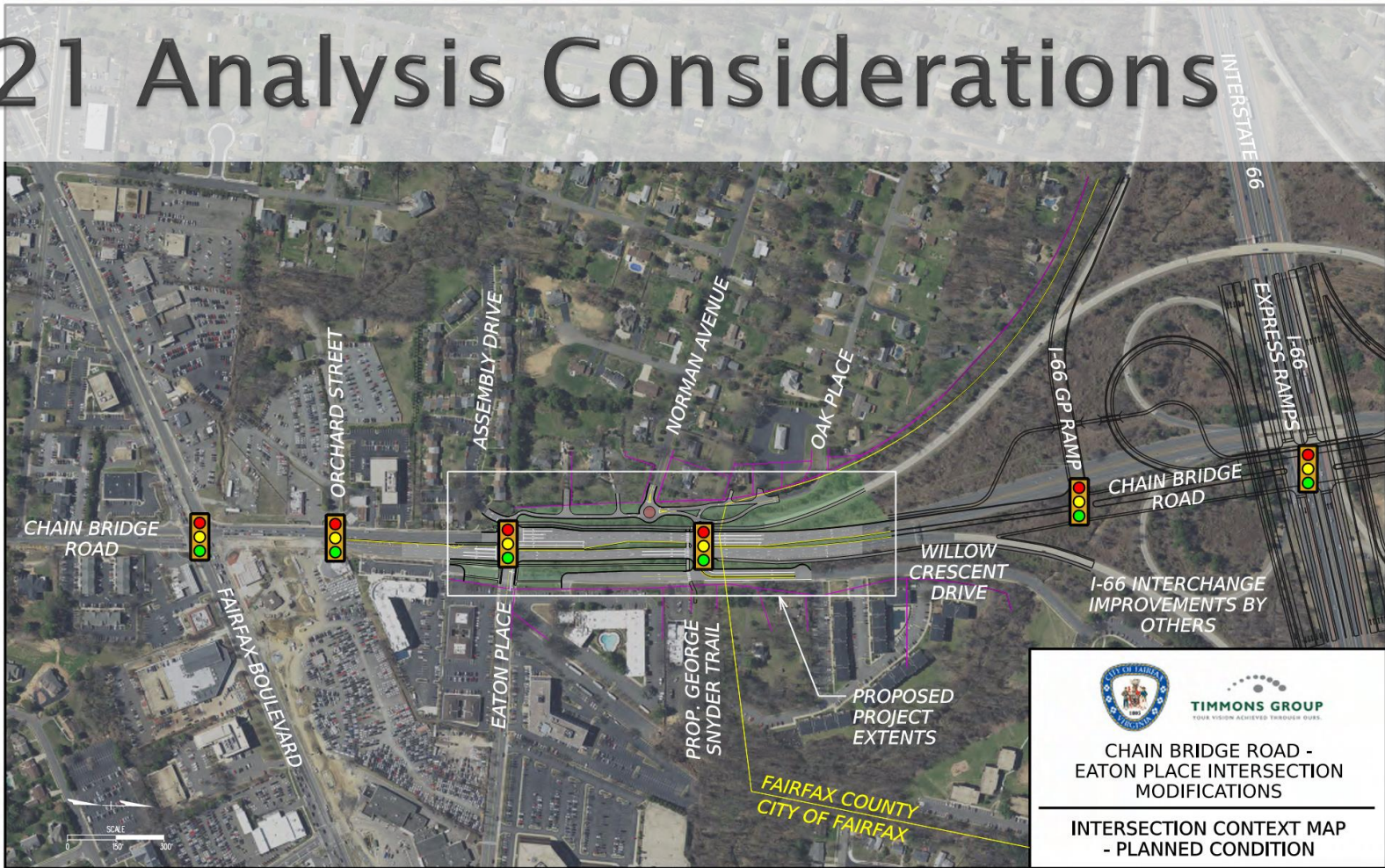
# 2018 Analysis Considerations



CHAIN BRIDGE ROAD - EATON PLACE INTERSECTION MODIFICATIONS

INTERSECTION CONTEXT MAP - 2018 ANALYSIS CONDITION

# 2021 Analysis Considerations



# 2022 Proposed Condition

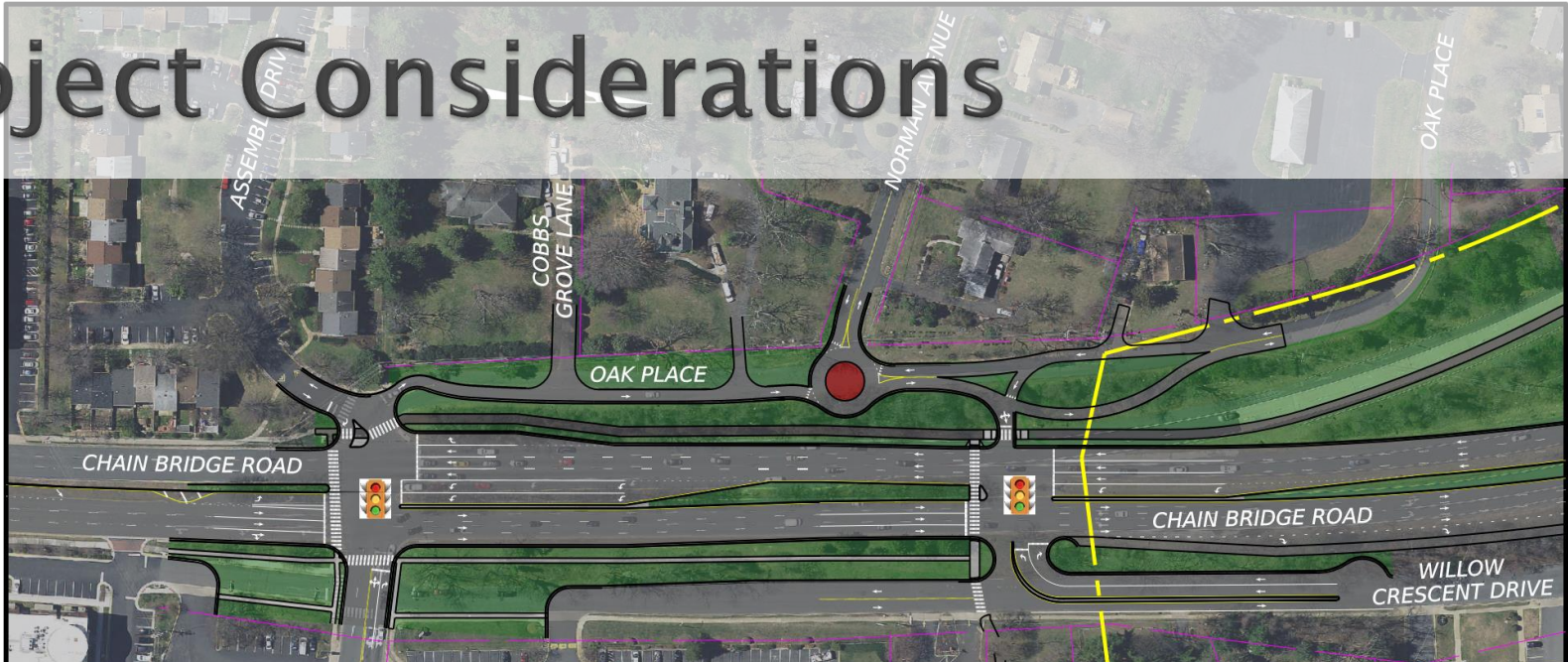


**TIMMONS GROUP**  
YOUR VISION. ACHIEVED THROUGH OURS.

**CHAIN BRIDGE ROAD -  
EATON PLACE INTERSECTION  
MODIFICATIONS**

**PUBLIC ENGAGEMENT  
SPRING 2022**

# Project Considerations



- ▶ Significant operational/safety improvements and congestion reduction
  - Redistribution of traffic between Eaton & new intersection at Norman/Willow Cres.
  - Eliminates service road signal phases at Eaton, streamlining operations
- ▶ Significant reduction of property impacts (relative to prior designs)
- ▶ Significant reduction of utility impacts & relocation requirements
- ▶ Expanded pedestrian facilities & enhanced crossing safety
- ▶ Introduces mini-roundabout at Norman Ave for traffic calming
- ▶ \$10.5M estimated project cost (\$10.7M NVTA Funds allocated & immediately available)

FUTURE GEORGE T. SNYDER TRAIL

FAIRFAX COUNTY

CITY OF FAIRFAX

SCALE  
0 50 100

**TIMMONS GROUP**  
YOUR VISION. ACHIEVED THROUGH Ours.

**CHAIN BRIDGE ROAD -  
EATON PLACE INTERSECTION  
MODIFICATIONS**

**PUBLIC ENGAGEMENT  
SPRING 2022**

# Project Considerations

- ▶ Significant operational improvements & congestion reduction
  - Redistribution of traffic between Eaton & new intersection at Norman/Willow Cres.
  - Eliminates service road signal phases at Eaton, streamlining operations
- ▶ Significant reduction of property impacts (relative to prior designs)
- ▶ Significant reduction of utility impacts & relocation requirements
- ▶ Expanded pedestrian facilities & enhanced crossing safety
- ▶ Introduces mini-roundabout at Norman Ave for traffic calming
- ▶ \$10.5M estimated project cost
  - \$10.7M NVTA Funds – allocated & immediately available to advance project



# Community Concerns

## ▶ Traffic & Congestion

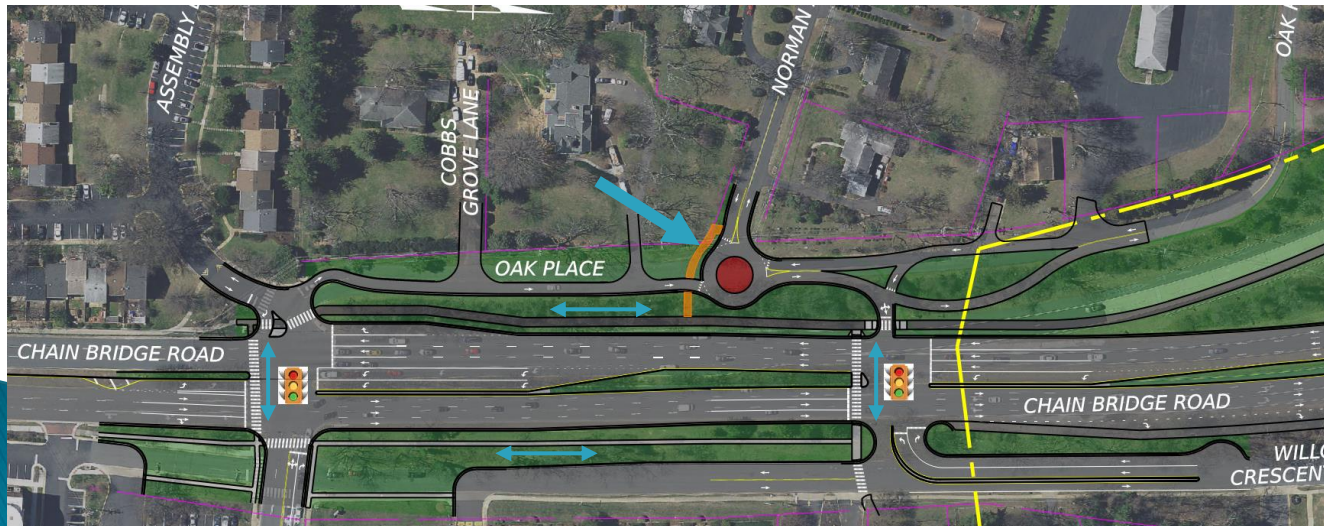
- Potential for mini-roundabout backups due to proximity to signal
- Single lane egress, compared to existing wide approach at Eaton
- Desire for two-way traffic between Norman / Eaton

- ❖ Redistribution of traffic fundamental to operational improvement
- ❖ Option for dedicated right turn lane – highlighted red



# Community Concerns

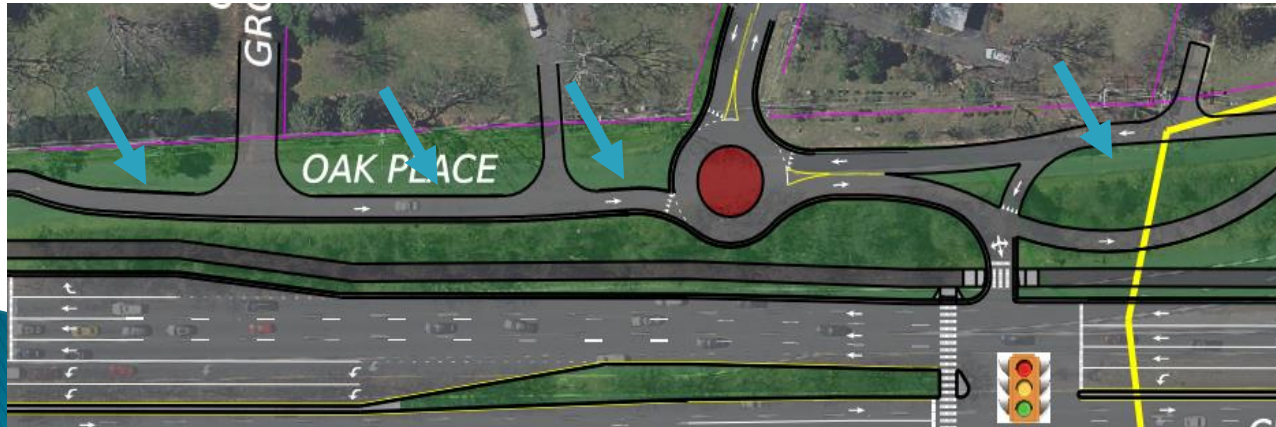
- ▶ Pedestrian Access and Connections
  - Expect increased walking from community which lacks sidewalks
  - Pedestrian safety through new intersection & mini-roundabout
  - Propose sidewalks from Norman to Eaton & new intersection



- ❖ Project to provide connection from Norman to proposed shared-use path & sidewalks
- ❖ Extensive Pedestrian Amenity Improvement

# Community Concerns

- ▶ Preservation & Enhancement of Green Space
  - Existing green space between “Oak Place” & Chain Bridge Rd (Rte. 123)
  - Plans to minimize tree loss, evergreen trees in place of impacted areas
  - Potential for plantings within mini-roundabout



- ❖ Detailed tree inventory & study to be completed
- ❖ Potential for reclaiming roadway area for green space

# Next Steps

- ▶ Project is fully funded, ready to advance as follows:
  - May 11: Assembly & Cobbdale community-wide meeting(s)
  - June 7: City Council work session, presentation of community feedback & discussions of next steps
  - Fall – Winter 2022: Begin field survey and detailed project design
  - 2023 – 2024: Right of way acquisition and utility relocations (as required), road construction to follow

# 2022 Proposed Condition



**TIMMONS GROUP**  
YOUR VISION. ACHIEVED THROUGH OURS.

**CHAIN BRIDGE ROAD -  
EATON PLACE INTERSECTION  
MODIFICATIONS**

**PUBLIC ENGAGEMENT  
SPRING 2022**