



RIGHT ENTRY ELEVATION



REAR ELEVATION



FRONT ENTRY ELEVATION



DRIVE THRU ELEVATION

01.26.23

TACO BELL - BOULEVARD MARKETPLACE - FAIRFAX, VA



FRONT ENTRY ELEVATION



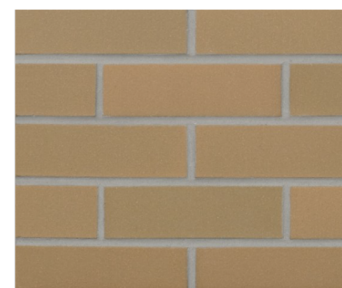
RIGHT ENTRY ELEVATION



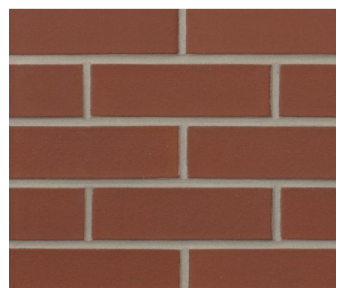
DRIVE THRU ELEVATION



REAR ELEVATION



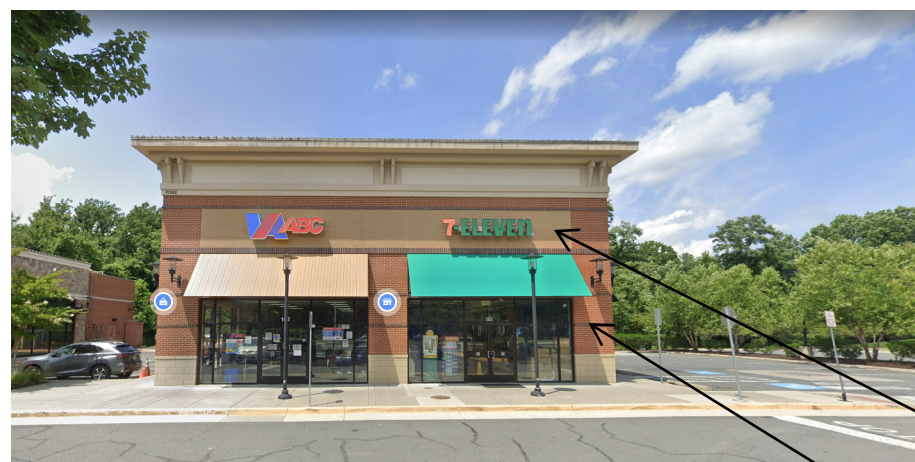
B1 - GLEN GERY
BURNT ALMOND



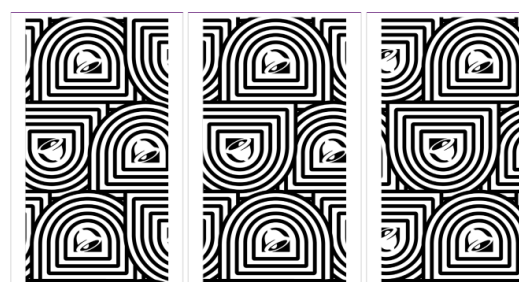
B2 - GLEN GERY
RED CLIFF



B3 - TAYLOR
ROYAL SALISBURY



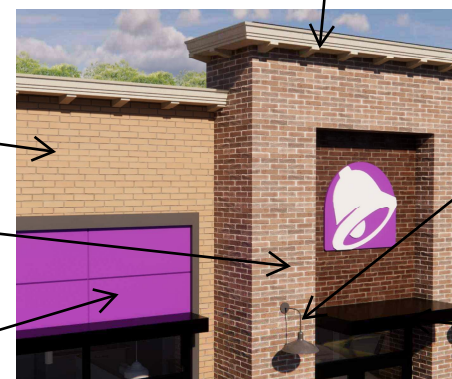
P-1 TACO BELL
PURPLE
(PROPRIETARY COLOR)



EXTERIOR ARTWORK PANELS



CORNICE DETAIL



B-1

B-2

P-1



DESCRIPTION
Exterior Wall Sconce

MATERIALS/FINISHES
Wrought Iron and Aluminum
Old Silver Finish

SIZE
Width: 14"
Height: 17.25"
P: 12.75"
TDC: 3"

BACKPLATE
Width: 6"
Depth: 1.25"

LOCATION
Exterior

EXTERIOR WALL
SCONCE



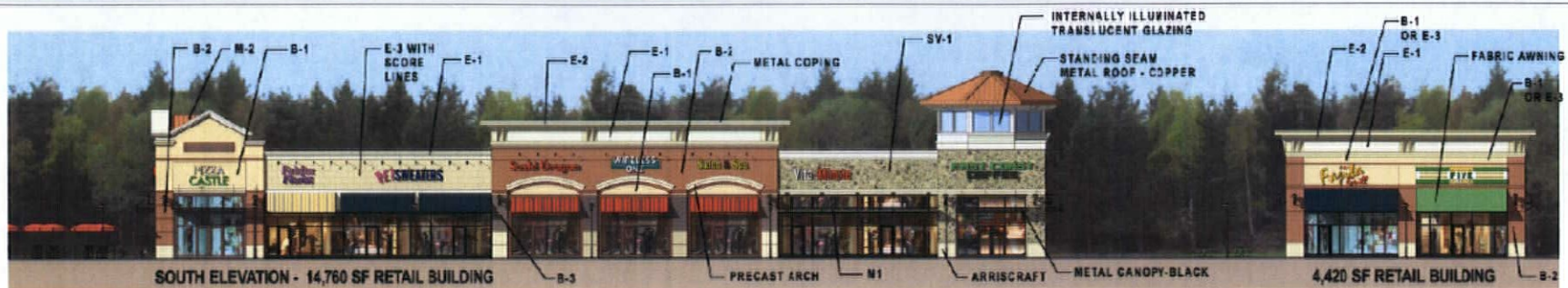
METAL EYEBROW
CANOPY
6" HIGH



42" BELL
14" LETTERS
SIGN AREA: 24.4 SF
PROPOSED SIGNAGE



PATIO EQUIPMENT



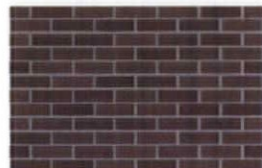
MATERIAL SELECTION



B-1 BRICK
GLEN GERY BRICK - BURNT ALMOND

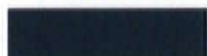


B-2 BRICK
GLEN GERY BRICK - RED CLIFF



B-3 BRICK
TAYLOR - ROYAL SALISBURY

MORTAR - BUFF - LEHIGH #4734
COLORS MAY NOT REPRODUCE ACCURATELY.
REFER TO SAMPLES PROVIDED.



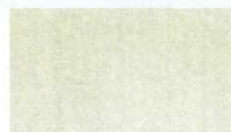
FABRIC AWNINGS - VARIOUS
COLORS AND PATTERNING ARE FOR ILLUSTRATION
ONLY AND ARE SUBJECT TO CHANGE



PRECAST CONCRETE - LIMESTONE



ARRISCRAFT RENAISSANCE - WHEAT



E-1 EIFS
DRYVIT #442 COTTON



E-2 EIFS
DRYVIT #109 MANOR WHITE



E-3 EIFS
DRYVIT #112 SANDWOOD BEIGE



EIFS SCORING DETAIL



C-1 SPLIT FACE CMU
BETCO SUPREME
BUFF # 5246



C-2 GROUND FACE CMU
BETCO SUPREME CMU
BUFF # 5246



C-3 SPLIT FACE CMU
BETCO SUPREME
WILLIAMSBURG RED



C-4 GROUND FACE CMU
BETCO SUPREME
WILLIAMSBURG RED



M-1 METAL - GREEN
COLOR TO MATCH
DREXMET
EVERGLADE MOSS



M-2 STANDING
SEAM METAL ROOF
COPPER METALLIC



M-3 STOREFRONT/
CANOPY
BLACK



M-4 STOREFRONT/
COPING
TO MATCH KAWNEER
CHAMPAGNE #18



SY-1 ELDERADO STONE VENEER
FIELDSTONE





TACO
BELL



TACO
BELL