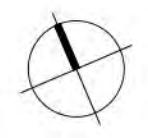
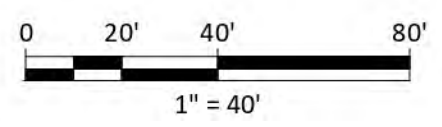
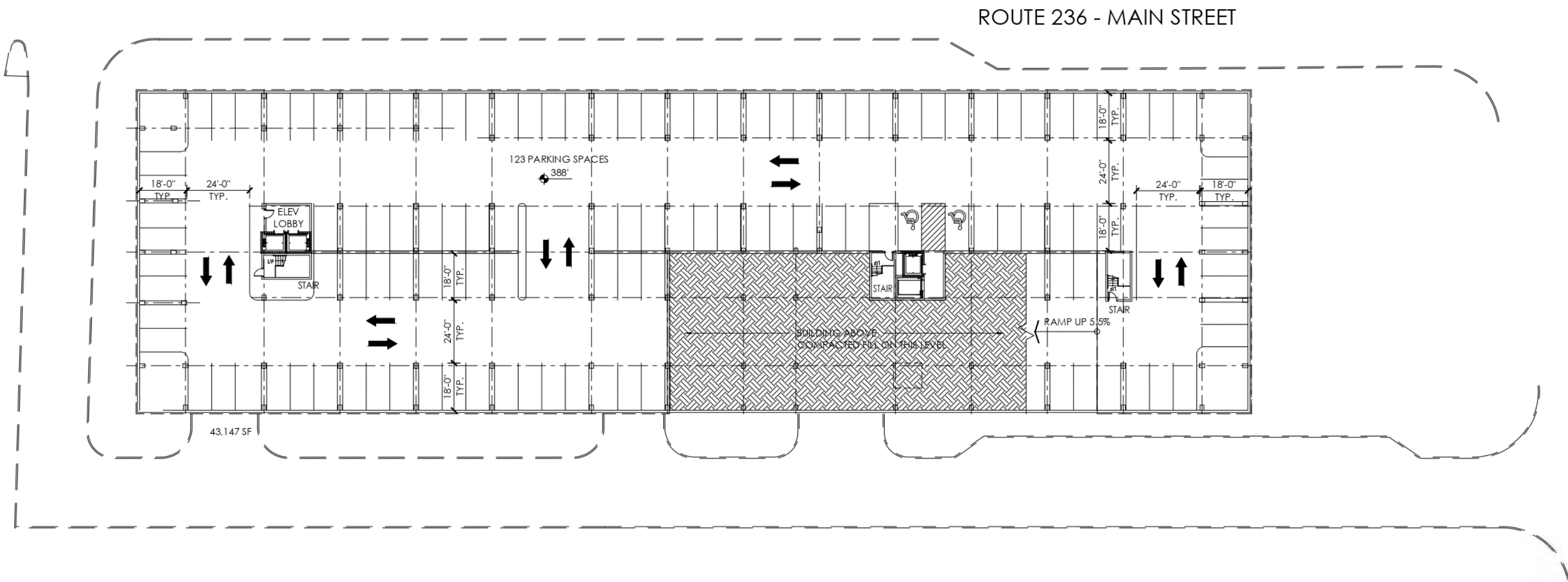


# CITY CENTRE WEST

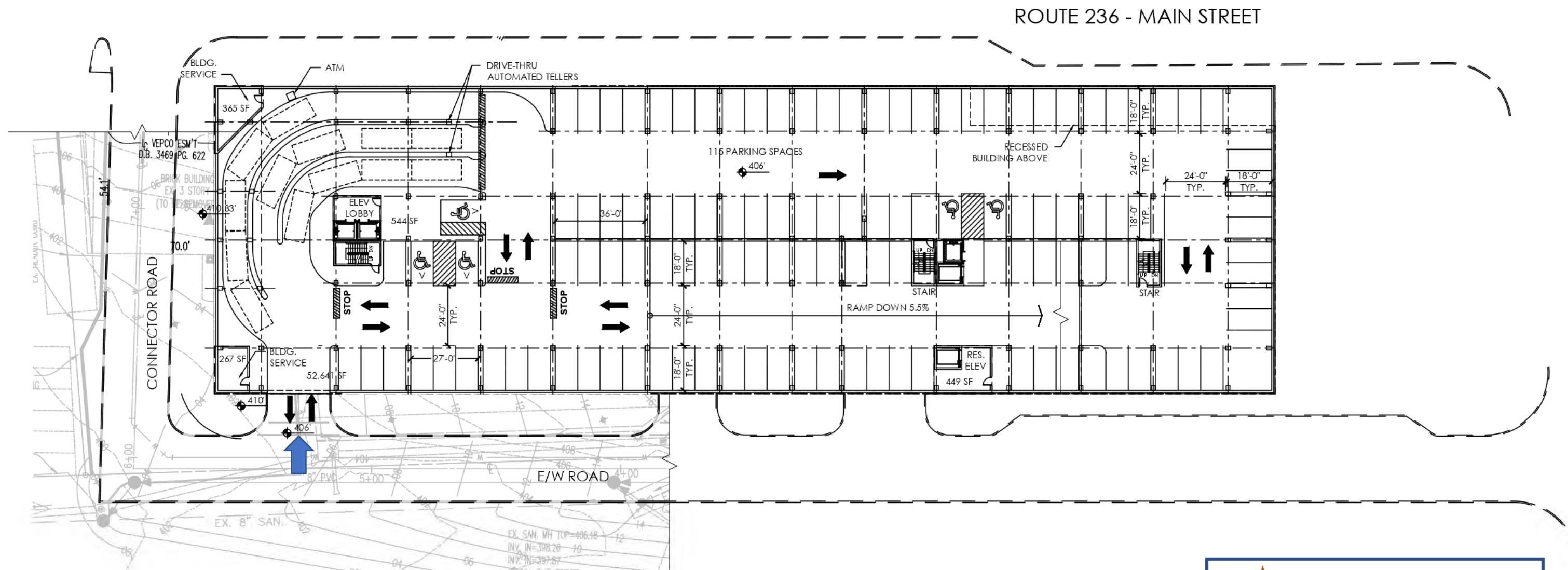
BAR SUBMISSION #1

M:\F31862\001\_Drawings\05\_CAD\06\_Plans\Record\321862\_CCW-Site\_Planning\_10/4/2022 12:33:10 PM\_DWG To PDF.plt

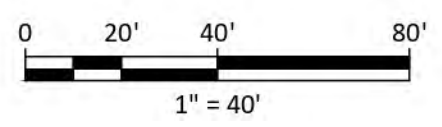


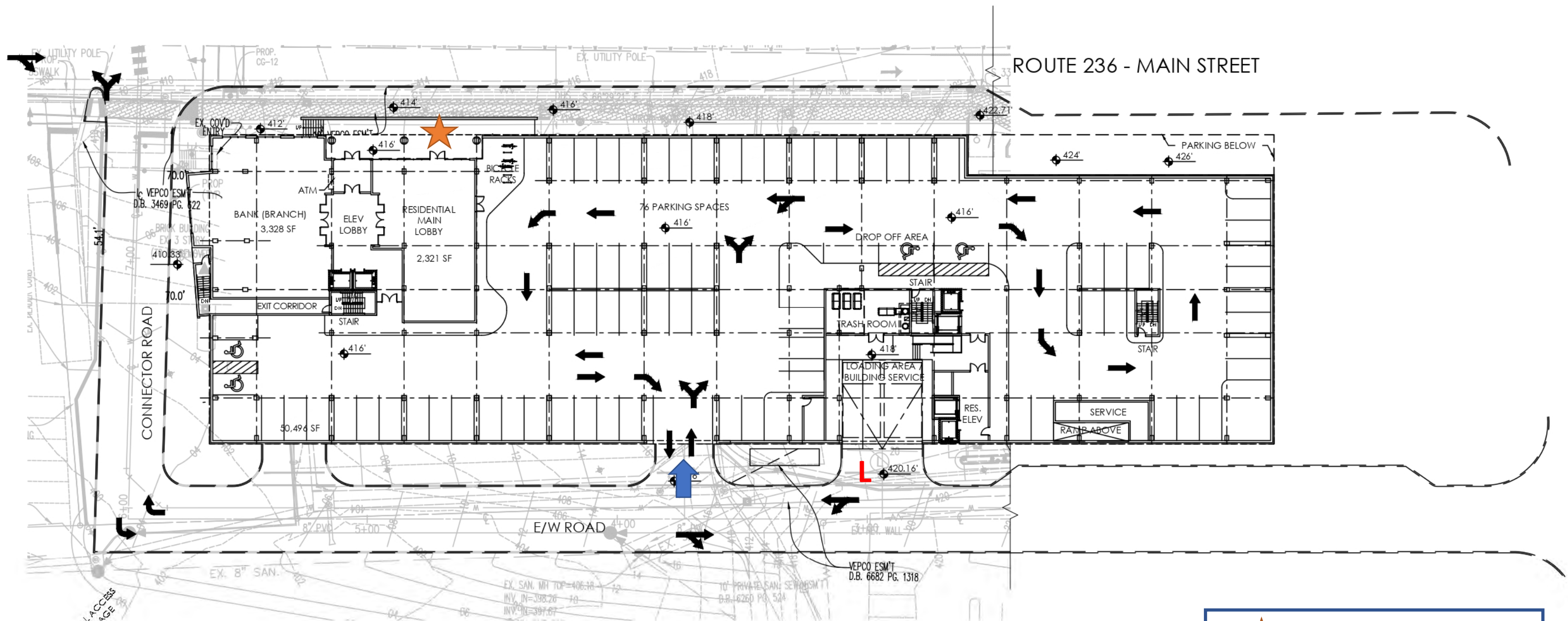


M:\F\321862\001\_Drawings\05\_CAD\06\_Plans\Record\321862\_CCW-Site\_Planning\_10/4/2022 12:33:18 PM\_DWG To PDF.plt

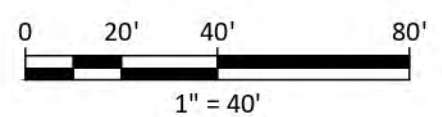


	<b>BUILDING ENTRANCE</b>
	<b>GARAGE ENTRANCE</b>
	<b>LOADING / SERVICE</b>

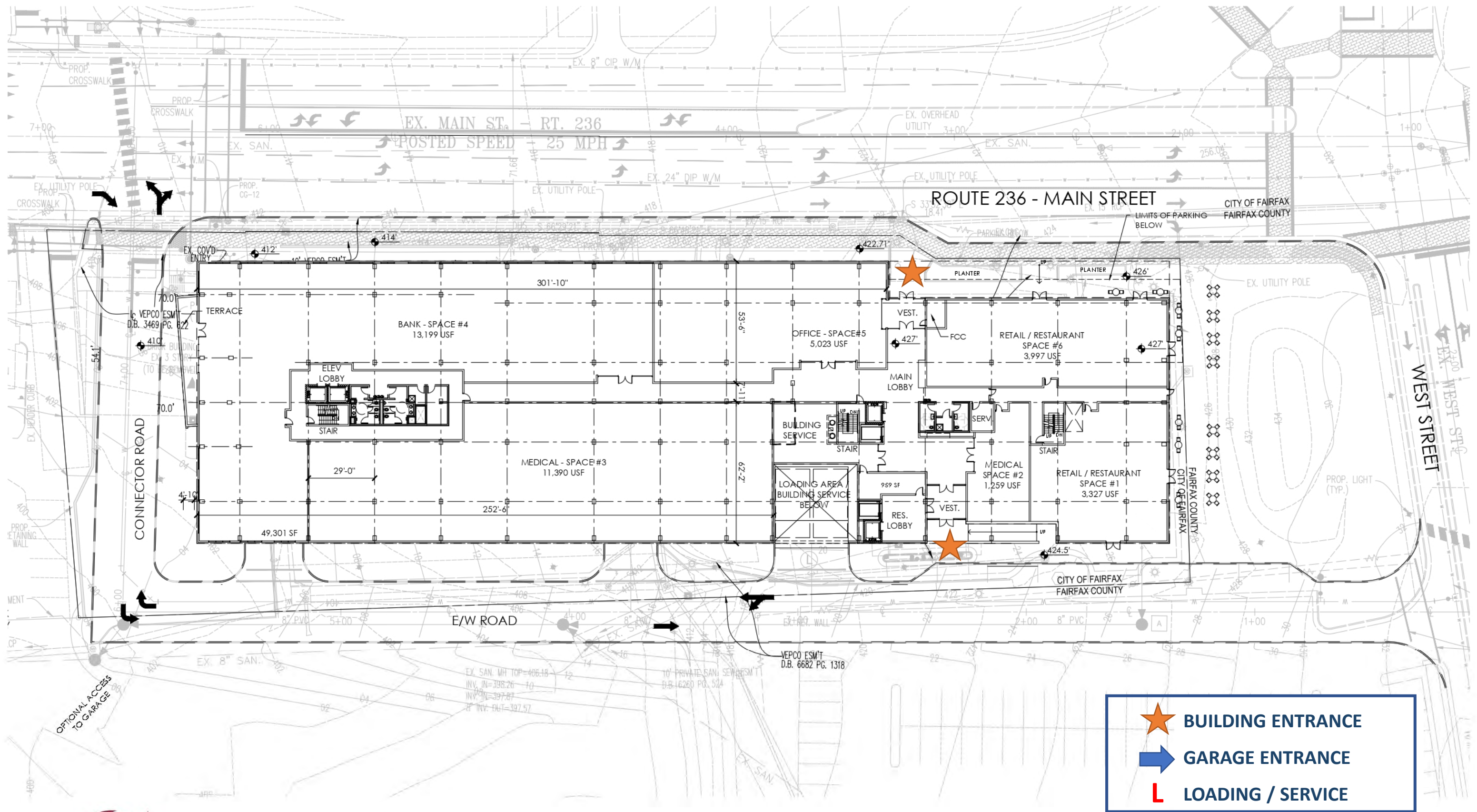


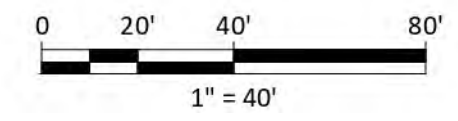
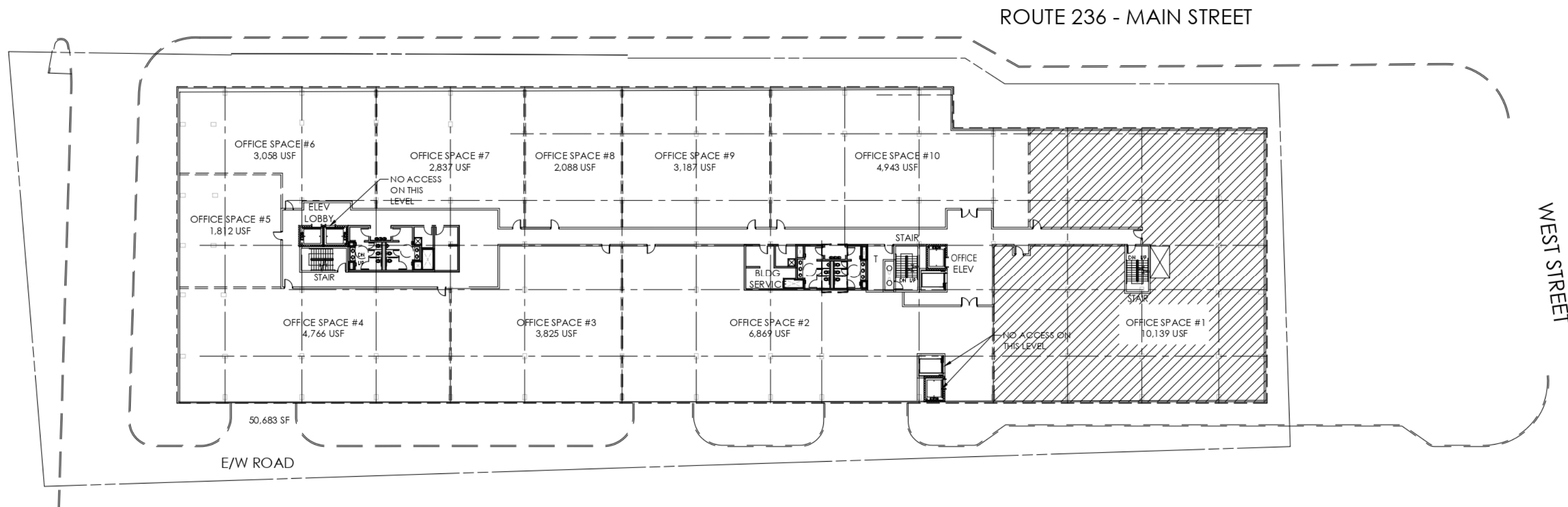


- BUILDING ENTRANCE**
- GARAGE ENTRANCE**
- LOADING / SERVICE**



M:\JF321862\00\01\_Drawings\05\_CAD\06\_Plans\Record\321862\_CCW\_Site\_Planning\_10/4/2022\_12:33:06 PM\_DWG To PDF.plt



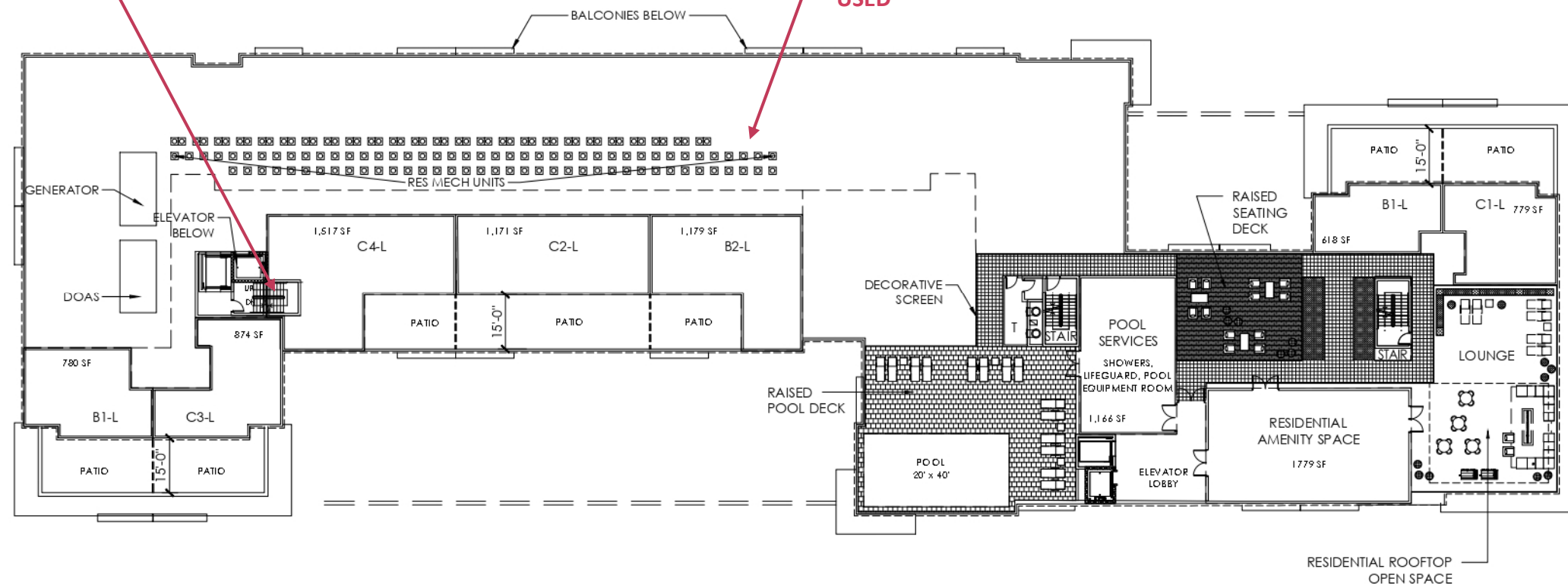




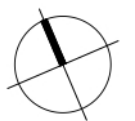
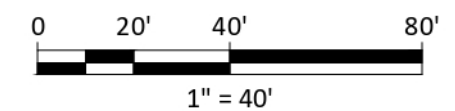


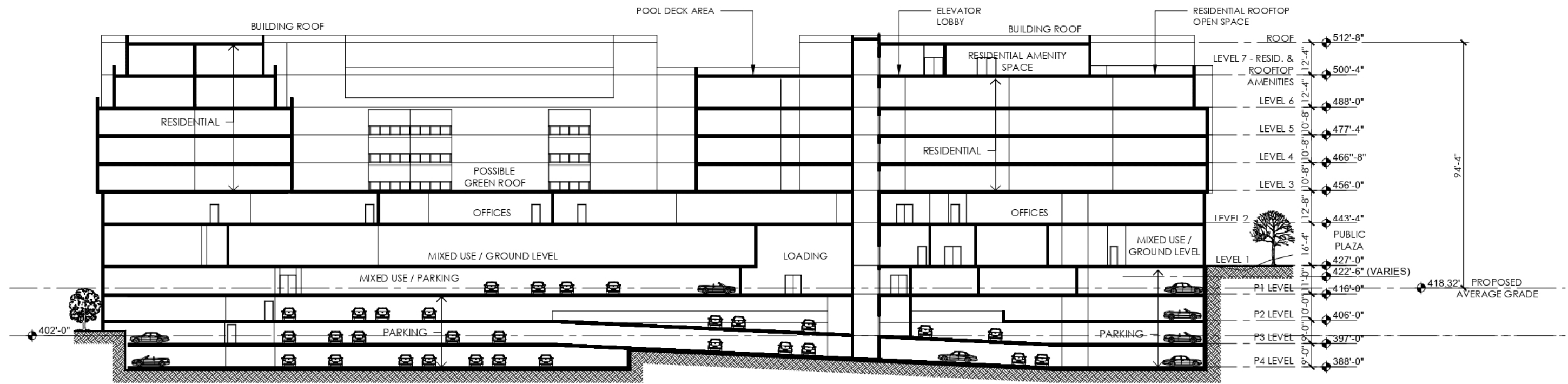
STAIR / ELEVATOR ROOFS MAY BE DRAINED BY SCUPPER AND DOWNSPOUTS, NO GUTTERS WILL BE USED

MAIN ROOF WILL HAVE ROOF DRAINS, NO GUTTERS WILL BE USED

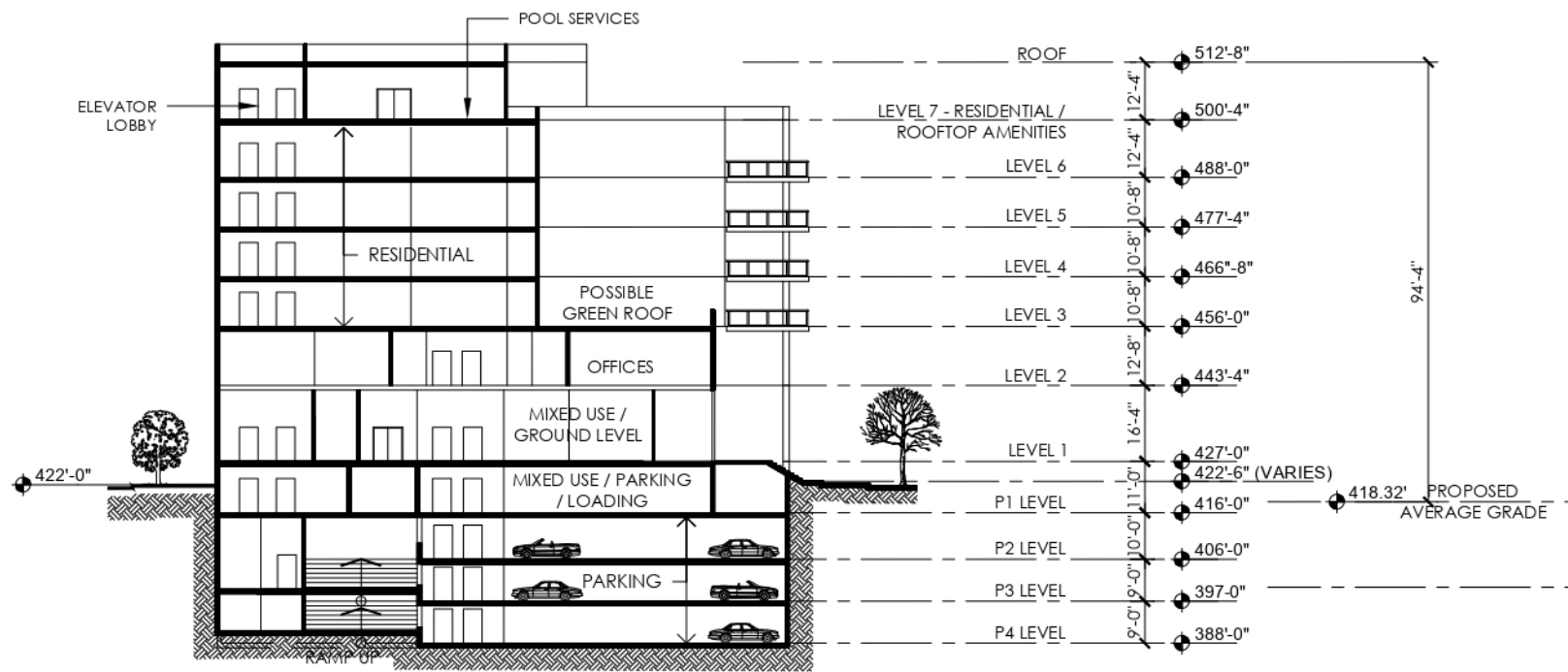


**L7 - LOFT LEVEL (RESIDENTIAL UNITS & AMENITIES)**

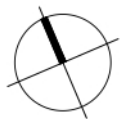
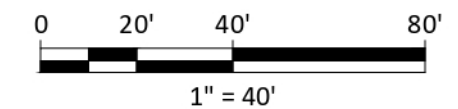
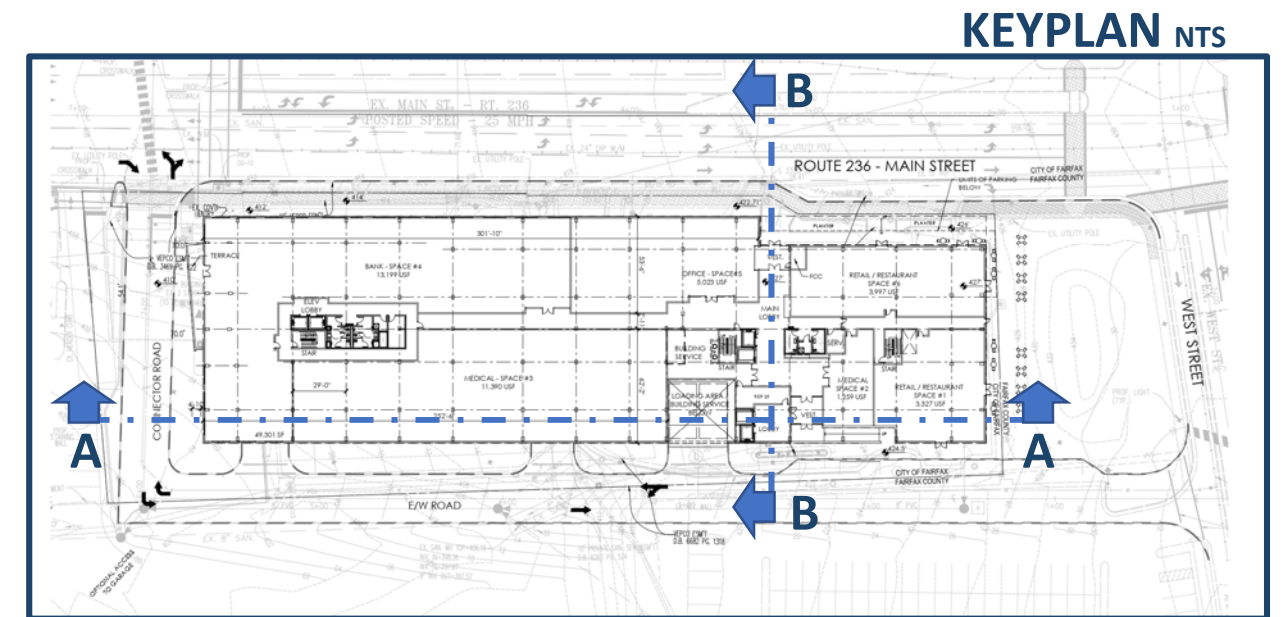


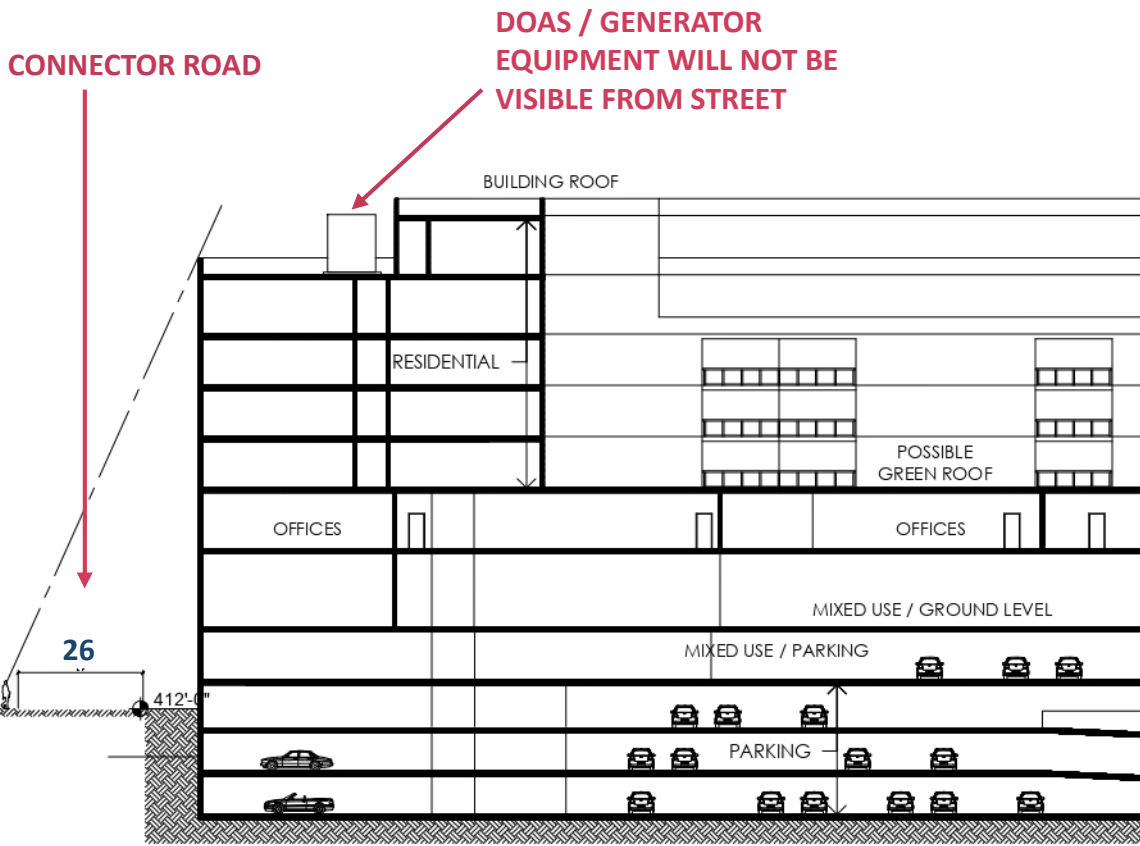


**A** BUILDING SECTION A - A  
1" = 40'-0"



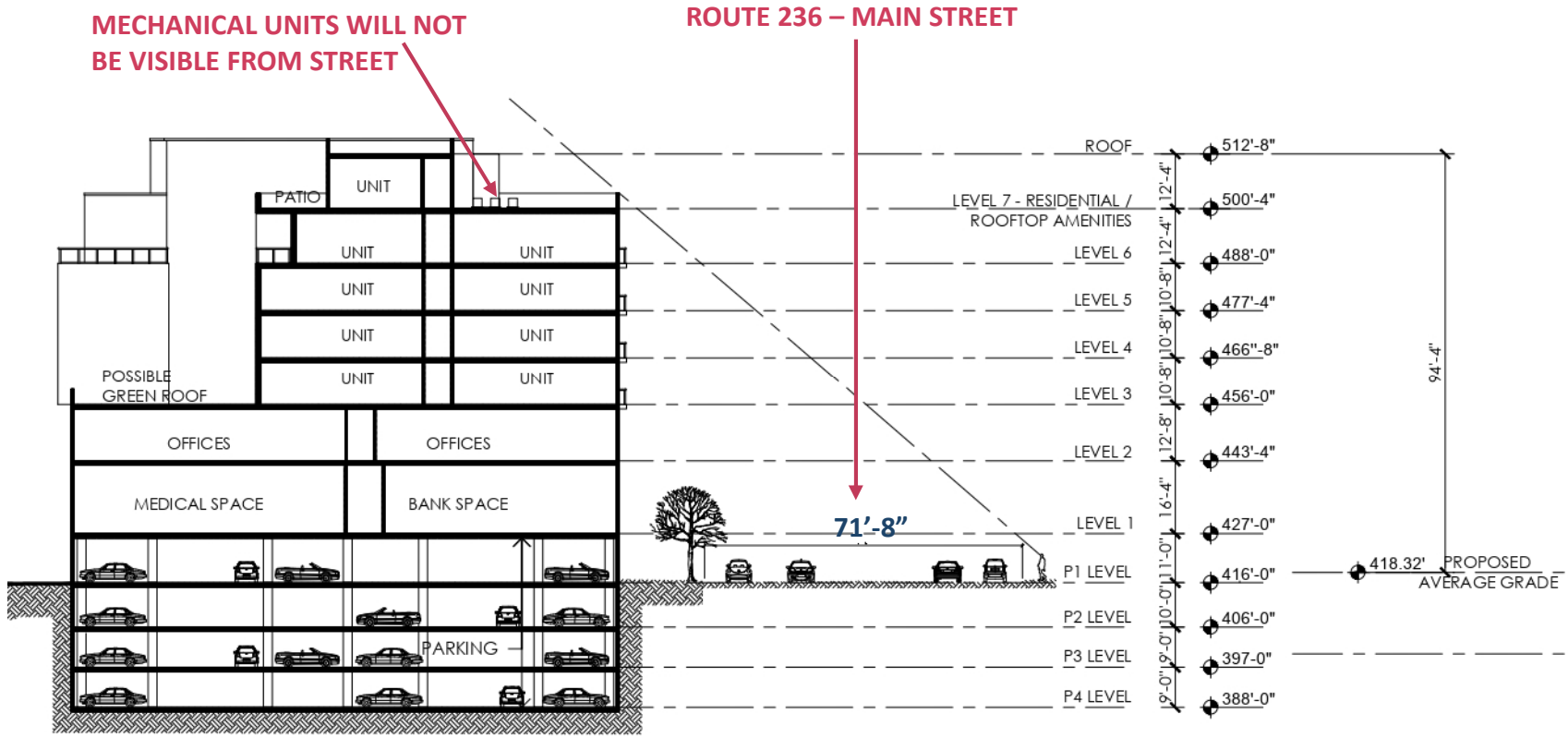
**B** BUILDING SECTION B - B  
1" = 40'-0"





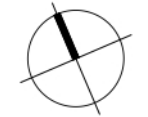
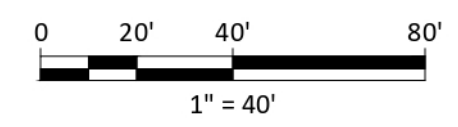
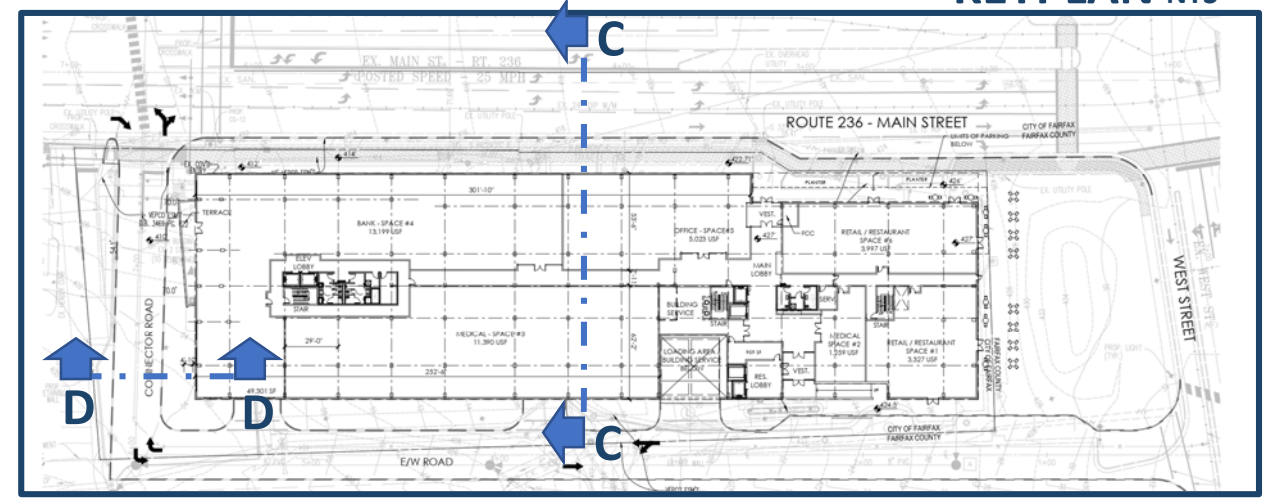
**BUILDING SECTION D - D**  
1" = 40'-0"

ROOF - RESID. & ROOFTOP AMENITIES	512'-8"
LEVEL 6	500'-4"
LEVEL 5	488'-0"
LEVEL 4	477'-4"
LEVEL 3	466'-8"
LEVEL 2	456'-0"
PUBLIC PLAZA	443'-4"
MIXED USE / GROUND LEVEL	427'-0"
MIXED USE / PARKING	422'-6" (VARIES)
P1 LEVEL	416'-0"
P2 LEVEL	406'-0"
P3 LEVEL	397'-0"
P4 LEVEL	388'-0"



**BUILDING SECTION C - C**  
1" = 40'-0"

**KEYPLAN NTS**



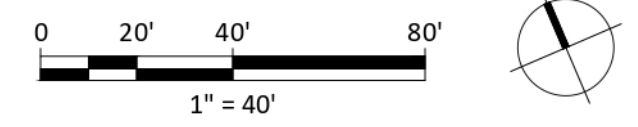
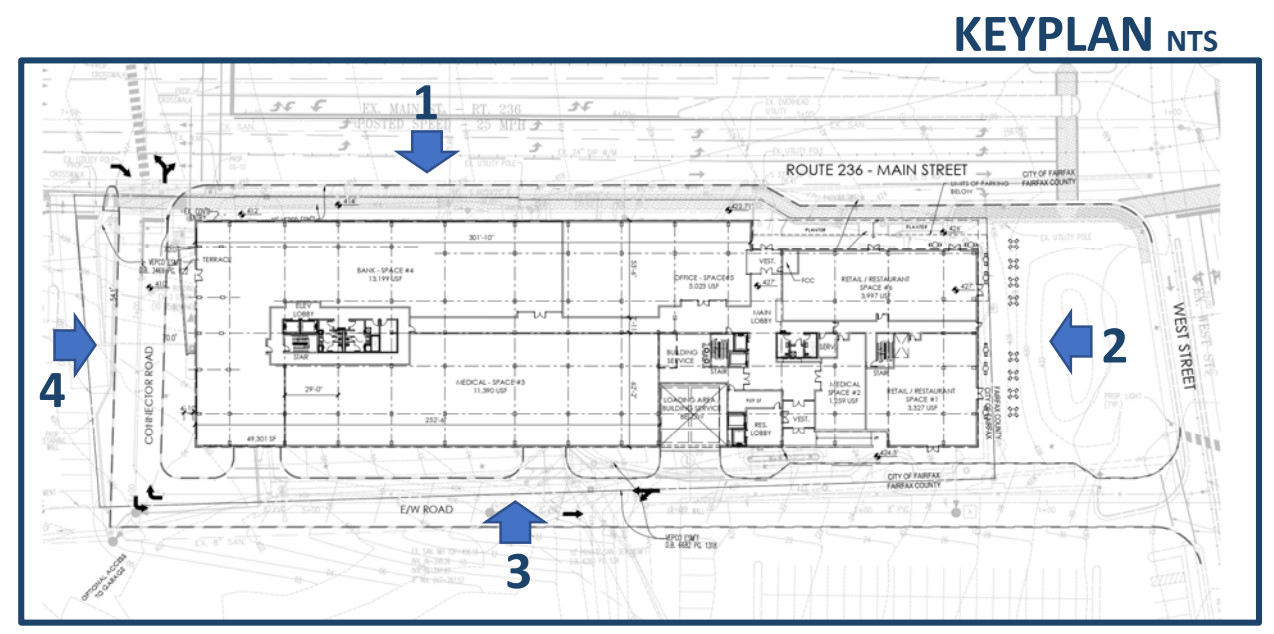


**1 NORTH ELEVATION (MAIN STREET)**  
1" = 40'-0"



**2 EAST ELEVATION (PARK)**  
1" = 40'-0"

**NOTE:** ELEVATIONS ON THIS SHEET ARE ILLUSTRATIVE IN NATURE AND ARE INTENDED TO DEMONSTRATE THE HEIGHT AND GENERAL ARCHITECTURAL CHARACTER OF THE PROPOSED BUILDING. FINAL ARCHITECTURAL DETAILS AND LANDSCAPING ARE SUBJECT TO CONFORMANCE WITH THE CERTIFICATE OF APPROPRIATENESS TO BE SUBMITTED UNDER SEPARATE COVER.



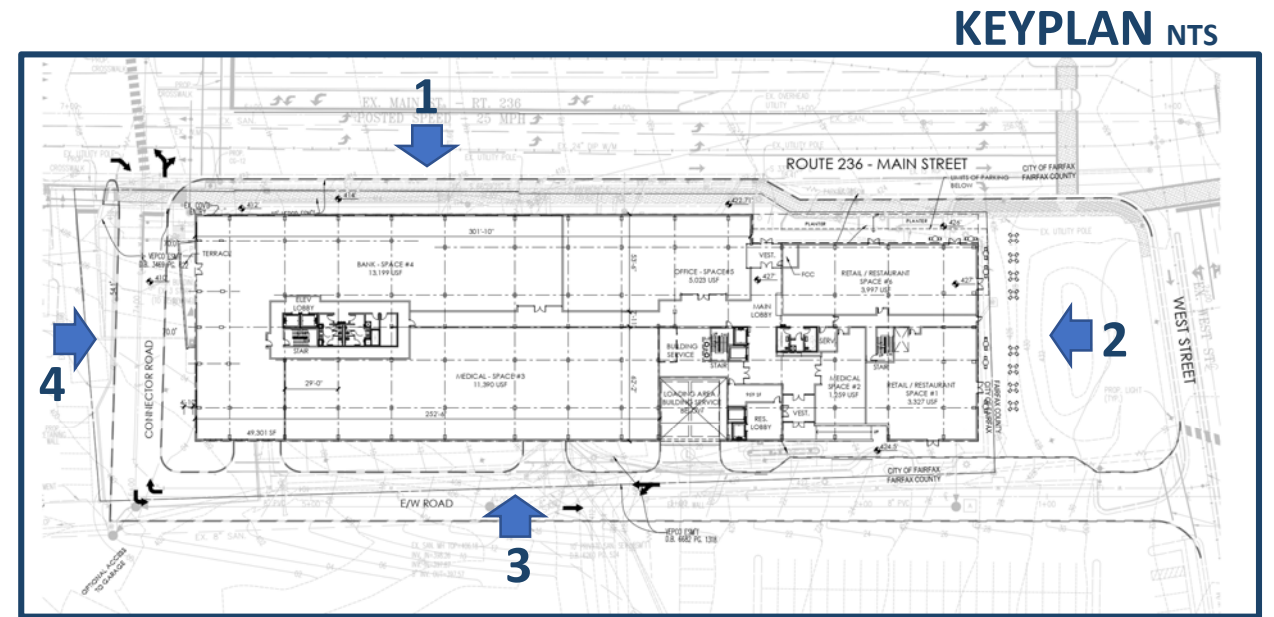


**3 SOUTH ELEVATION**  
1" = 40'-0"

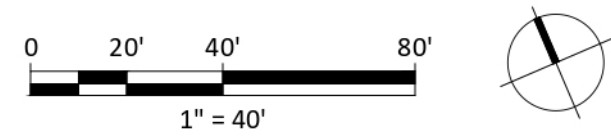


**4 WEST ELEVATION**  
1" = 40'-0"

**NOTE:** ELEVATIONS ON THIS SHEET ARE ILLUSTRATIVE IN NATURE AND ARE INTENDED TO DEMONSTRATE THE HEIGHT AND GENERAL ARCHITECTURAL CHARACTER OF THE PROPOSED BUILDING. FINAL ARCHITECTURAL DETAILS AND LANDSCAPING ARE SUBJECT TO CONFORMANCE WITH THE CERTIFICATE OF APPROPRIATENESS TO BE SUBMITTED UNDER SEPARATE COVER.



**KEYPLAN** NTS





**BRICK 1**



**BRICK 2**



**BRICK 3**



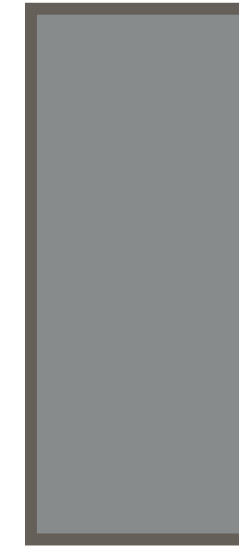
**FIBER CEMENT PANEL (FC)**



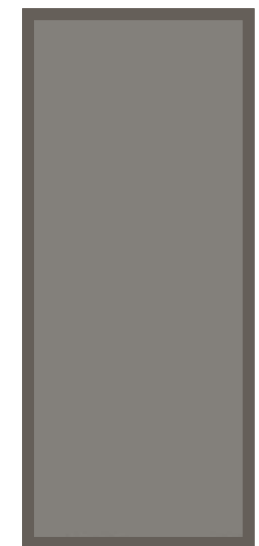
**ARCHITECTURAL  
PRECAST / MASONRY**



**ALUMINUM  
STOREFRONT  
SYSTEM**



**METAL PANEL  
#1 – (MP#1)**



**METAL PANEL  
#2**



*NOTE: PHYSICAL SAMPLES DELIVERED TO BAR ON SEPTEMBER 23, 2022.*

**ALTERNATE OPTION**



**BRICK 1**



**BRICK 2**



**BRICK 3**



**FIBER CEMENT PANEL (FC)**



**ARCHITECTURAL  
PRECAST / MASONRY**



**ALUMINUM  
STOREFRONT  
SYSTEM**



**METAL PANEL  
#1 – (MP#1)**

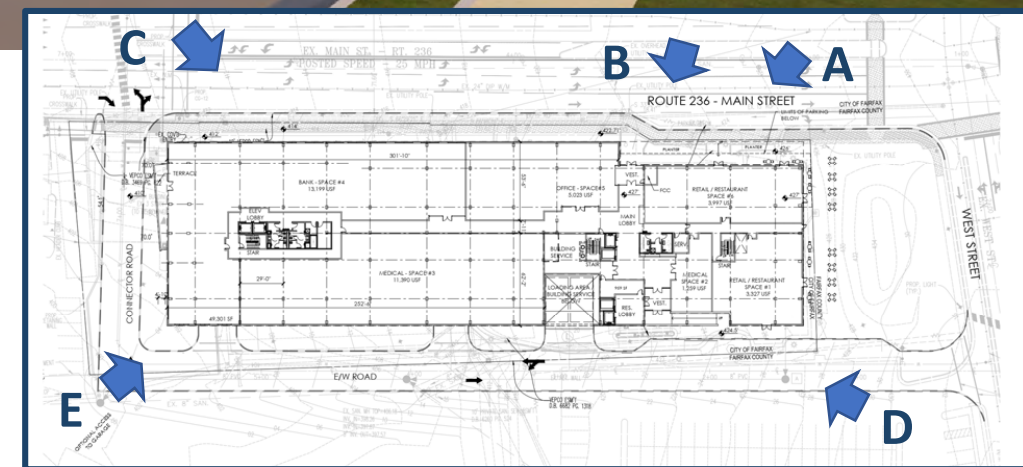
**METAL PANEL  
#2**



NOTE: PHYSICAL SAMPLES AVAILABLE UPON REQUEST.



VIEW A



KEYPLAN NTS

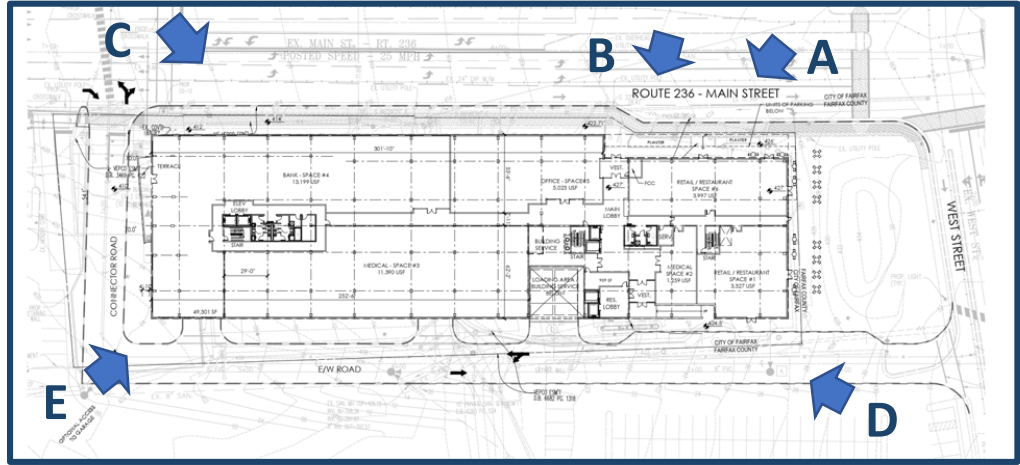


CITY CENTRE WEST CITY OF FAIRFAX

3D VIEWS



VIEW B

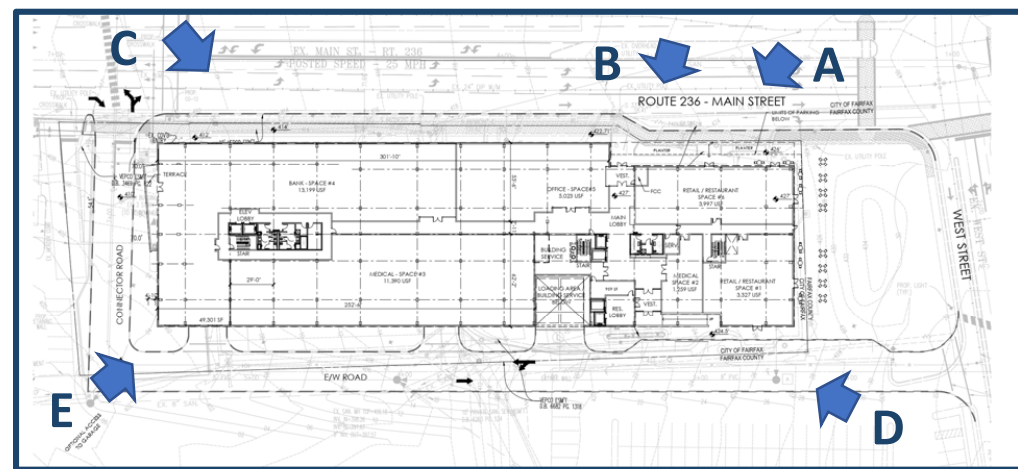


KEYPLAN NTS



VIEW C

CITY CENTRE WEST CITY OF FAIRFAX



KEYPLAN NTS



VIEW E



CITY CENTRE WEST CITY OF FAIRFAX



**PROGRESS LIGHTING**

**Progress Lighting 5" LED Recessed Trim - 3000K - 700 Lumens - Triac Dimming**  
 Model: P8061-20-30K  
**\$42.48** ★★★★★ 1 Review  
 Finish: Antique Bronze - 103 In Stock

Free Shipping on orders over \$49.00!  
 Leaves the Warehouse Tomorrow, October 13th - Shipping to 20164

1

**Key Specifications**

- Trim Size: 5 in.
- Bulb Base: Integrated LED
- Trim Style: Open Trims, Shower Trims, Reflector Trims
- Watts Per Bulb: 10
- Location Rating: Wet Location

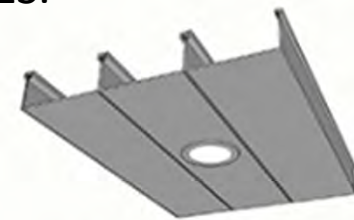
**Recommended for You**



**SURFACE MOUNT LIGHT FIXTURES.**

\$58.59	\$17.60	\$10.17	\$219.69	\$45.81	\$46.00

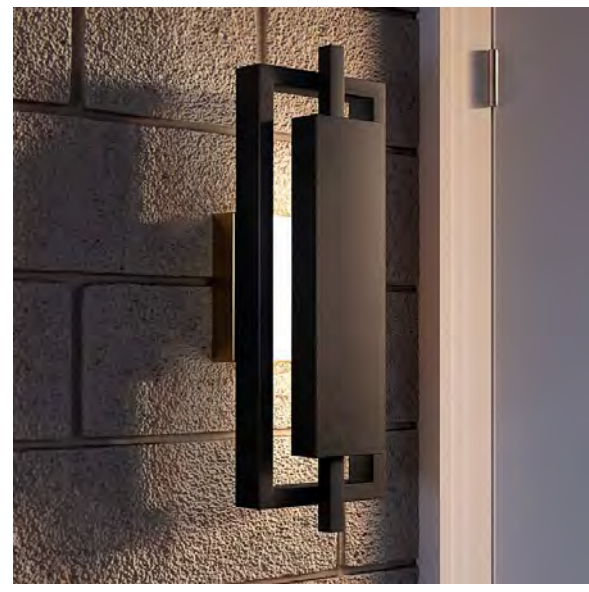
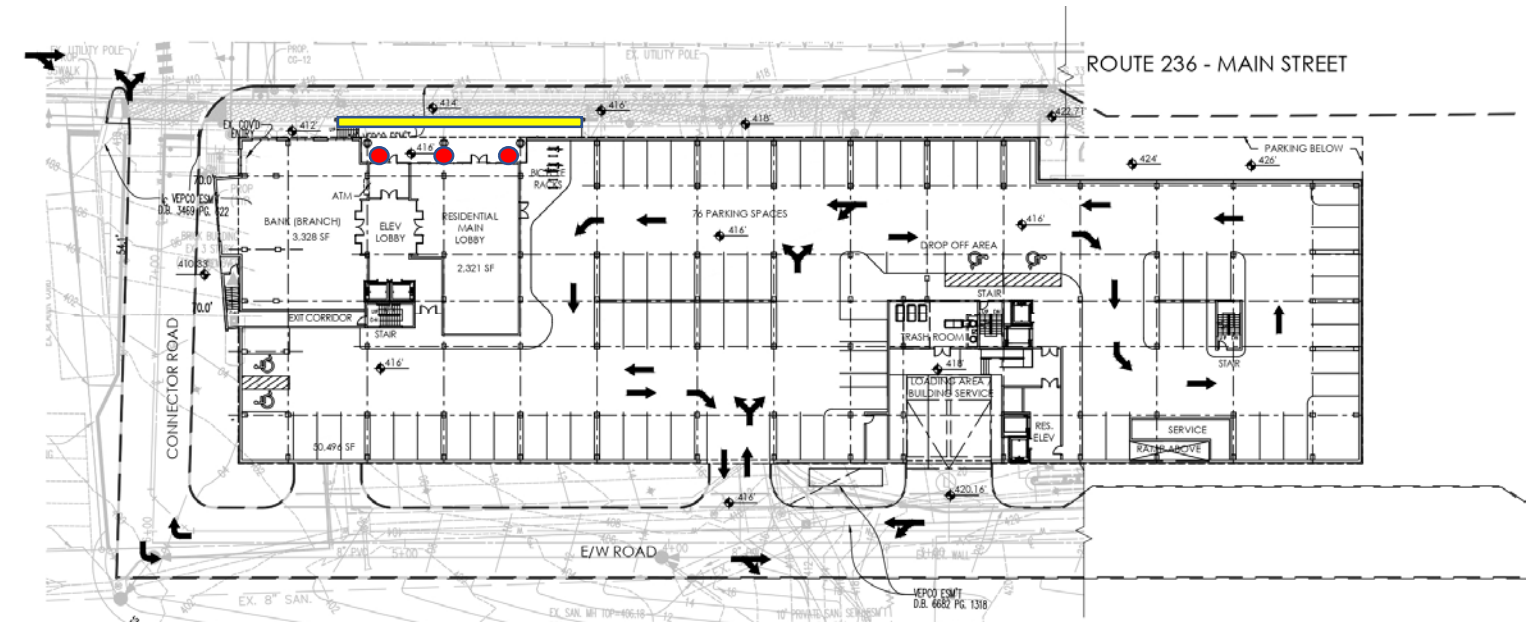
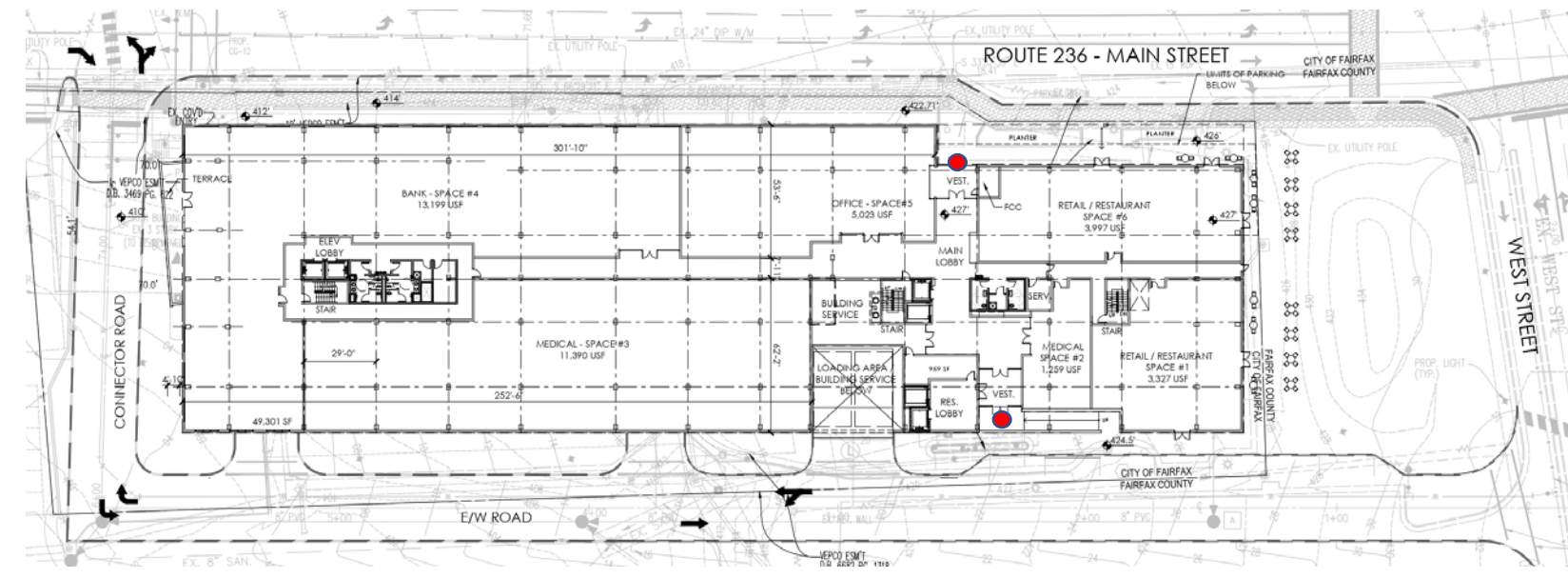
**RECESSED LIGHT FIXTURES.**



**Light Box Round**

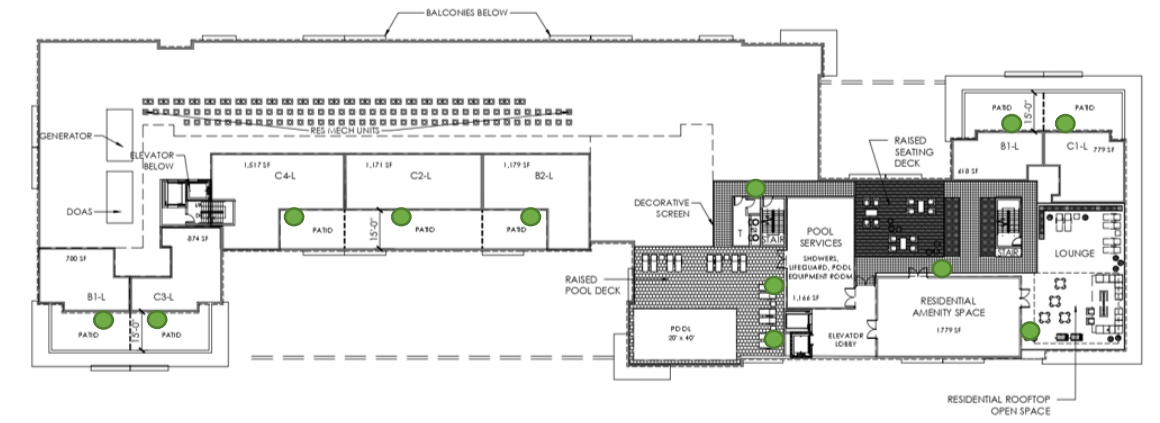


RECESSED OR SURFACE MOUNTED EXTERIOR LIGHT FIXTURES FOR CANOPIES.



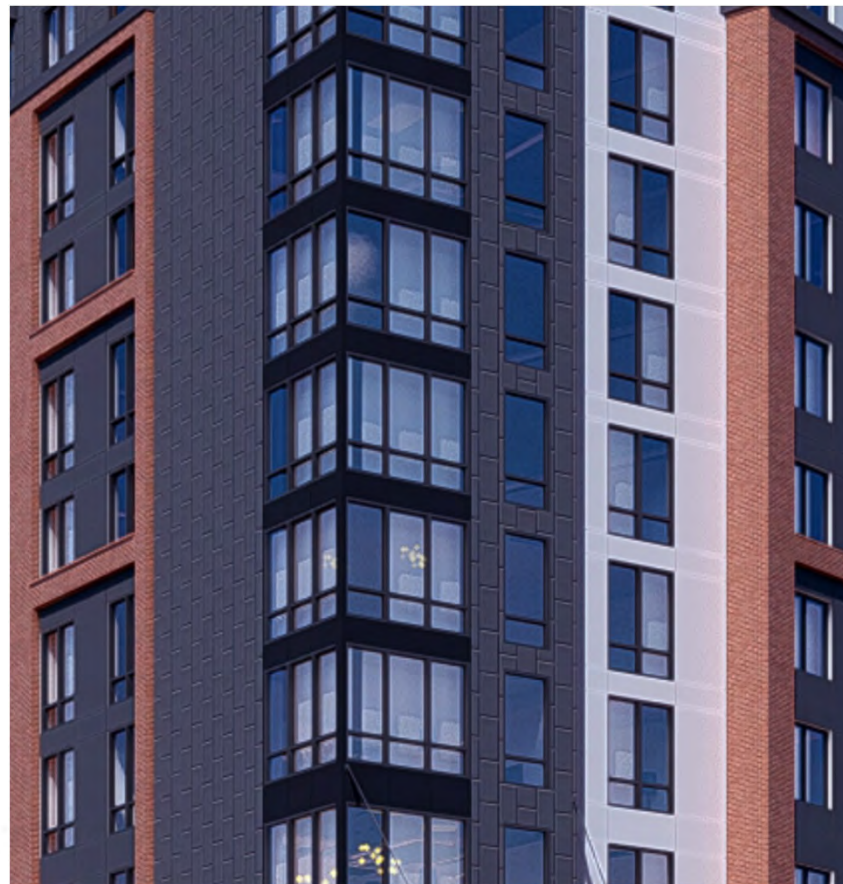
**BUILDING EXTERIOR LIGHT FIXTURE**  
**HIGH MATTE BLACK OUTDOOR LED**  
**LIGHT FIXTURE**

**PATIO EXTERIOR LIGHT FIXTURE**  
**HIGH MATTE BLACK OUTDOOR LED**  
**LIGHT FIXTURE**





Black



FIBERGLASS WINDOWS BLACK COLOR.  
MANUFACTURER: PELLA IMPERVIA WINDOWS OR  
SIMILAR.



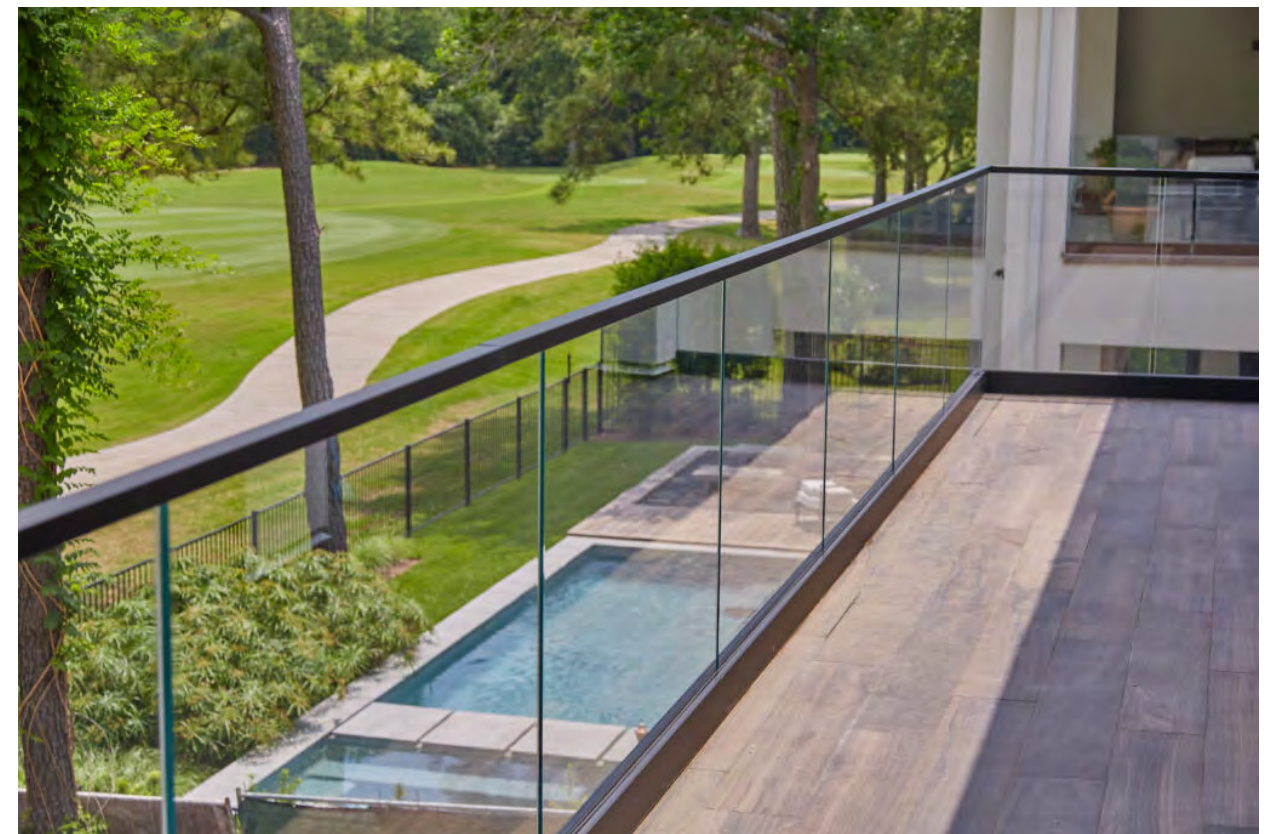


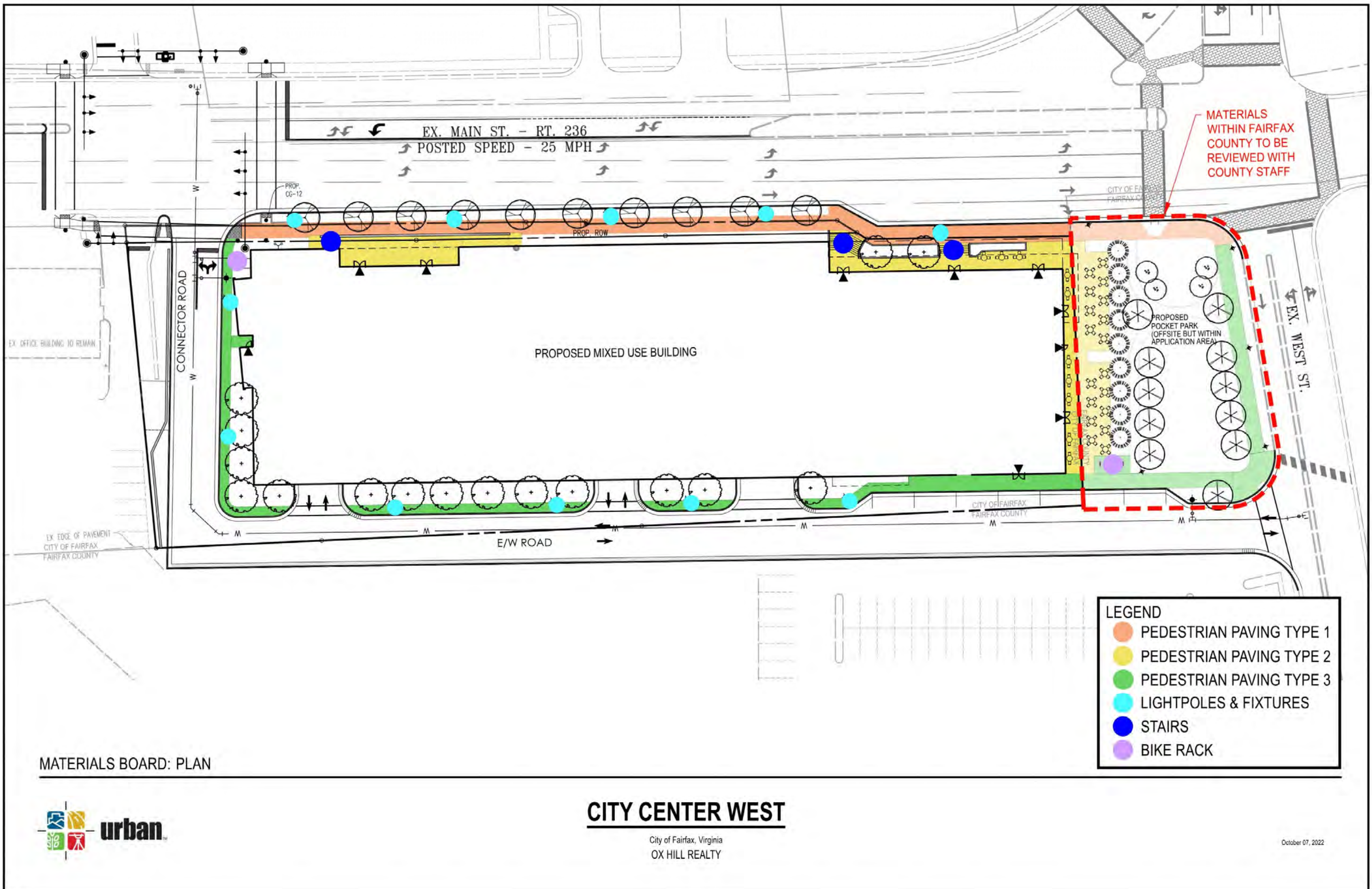
ALUMINUM STOREFRONT, COLOR BRONZE.  
MANUFACTURER: KAWNEER STOREFRONTS OR SIMILAR.





BALCONY GLASS RAILING WITH LOW PROFILE HANDRAIL.  
MANUFACTURER: VIEWRAIL OR ARCHITECTURAL RAILING  
SYSTEM OR GLASS RAILING OR SIMILAR.







PEDESTRIAN PAVING



Pedestrian Paving Type 1



Pedestrian Paving Type 2



Pedestrian Paving Type 3

LIGHTPOLES & FIXTURES



Hanging Basket



Light Pole Fixture



Hayrack Basket



Light Pole Base

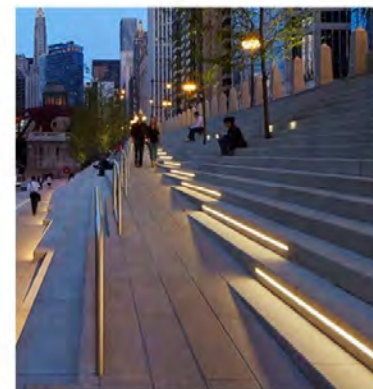


Banner Arm

STAIRS



Handrail



Step Lights

ADDITIONAL FEATURES



Bullet Light



Planter Pot



Bollard Lights



Trash Receptacle



Bike Rack



Bench

MATERIALS BOARD: GROUND LEVEL



**CITY CENTER WEST**

City of Fairfax, Virginia  
OX HILL REALTY

October 07, 2022

### STREET TREES



October Glory  
Red Maple



American Hornbeam



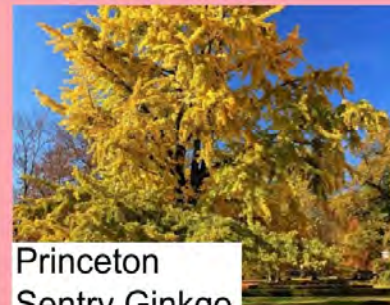
Blackgum



Hophornbeam



Sourwood



Princeton  
Sentry Ginkgo



Valley Forge Elm



London Planetree

### GROUNDCOVERS



Snow-in-Summer



Wild Ginger



Sweet Woodruff



Creeping  
St. John's Wort

### SHRUBS



Summersweet



Winterberry



Virginia Sweetspire



Dwarf Fothergilla

### PLANTS FOR PLANTER POTS



Crocus



Persian Shield



Ornamental Kale



Aromatic Aster

### PLANTS FOR HANGING/HAYRACK BASKETS



Pansies



Chrysanthemum



Lantana



Petunia

MATERIALS BOARD: PLANT PALETTE



## CITY CENTER WEST

City of Fairfax, Virginia  
OX HILL REALTY

October 07, 2022



**dcs**

D E S I G N

8614 Westwood Center Drive  
Tysons, VA 22182  
+1 703 556 9275

[dcsdesign.com](http://dcsdesign.com)