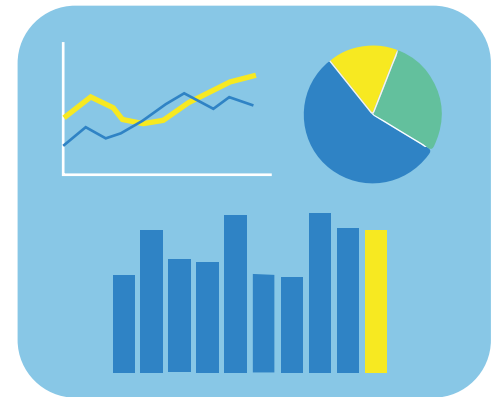


Kamp Washington

FACT BOOK



Kamp Washington Fact Book Table of Contents

Economic Vitality

Kamp Washington Offices and Retail Establishments Included in Office and Retail Lease Analyses (2011-2020).....	1
Kamp Washington Office Lease Analysis.....	2
Kamp Washington Retail Lease Analysis.....	3
Taxable Sales as a Percentage of Consumer Goods and Service Sales, 2018.....	4
Kamp Washington and Nearby Commercial Building Value to Land Value Ratio.....	5
Kamp Washington Proposed and Planned Development Projects and Transportation Improvements.....	6

Multimodal Transportation

Transportation Network.....	7
Kamp Washington Annual Average Daily Traffic Volume Estimates, 2019.....	8
Annual Traffic Trends.....	9
Kamp Washington Posted Speed Limits.....	10
Transit Coverage.....	11
Transit Frequency and Span.....	12
Bus Ridership.....	13
Kamp Washington Sidewalk Network.....	14
Kamp Washington 15 Minute Walkshed.....	15
Concentration of Community Amenities and Walkable Infrastructure.....	16
Bicycle Activity.....	17
Regional Bicycle Routes.....	18

Commercial Corridors and Activity Centers

Kamp Washington Public Right-of-Way Widths and Building Footprints.....	19
Building Age In and Near Kamp Washington.....	20

Environment and Sustainability

Kamp Washington Land Constraints and Environmental Features.....	21
Kamp Washington Building Footprints and Impervious Surface.....	22

Kamp Washington Fact Book Table of Contents

Public Works

Kamp Washington Water and Sewer Infrastructure.....	23
Kamp Washington Street Lights and Traffic Lights.....	24

Parks and Recreation

Kamp Washington Parks.....	25
----------------------------	----

Education

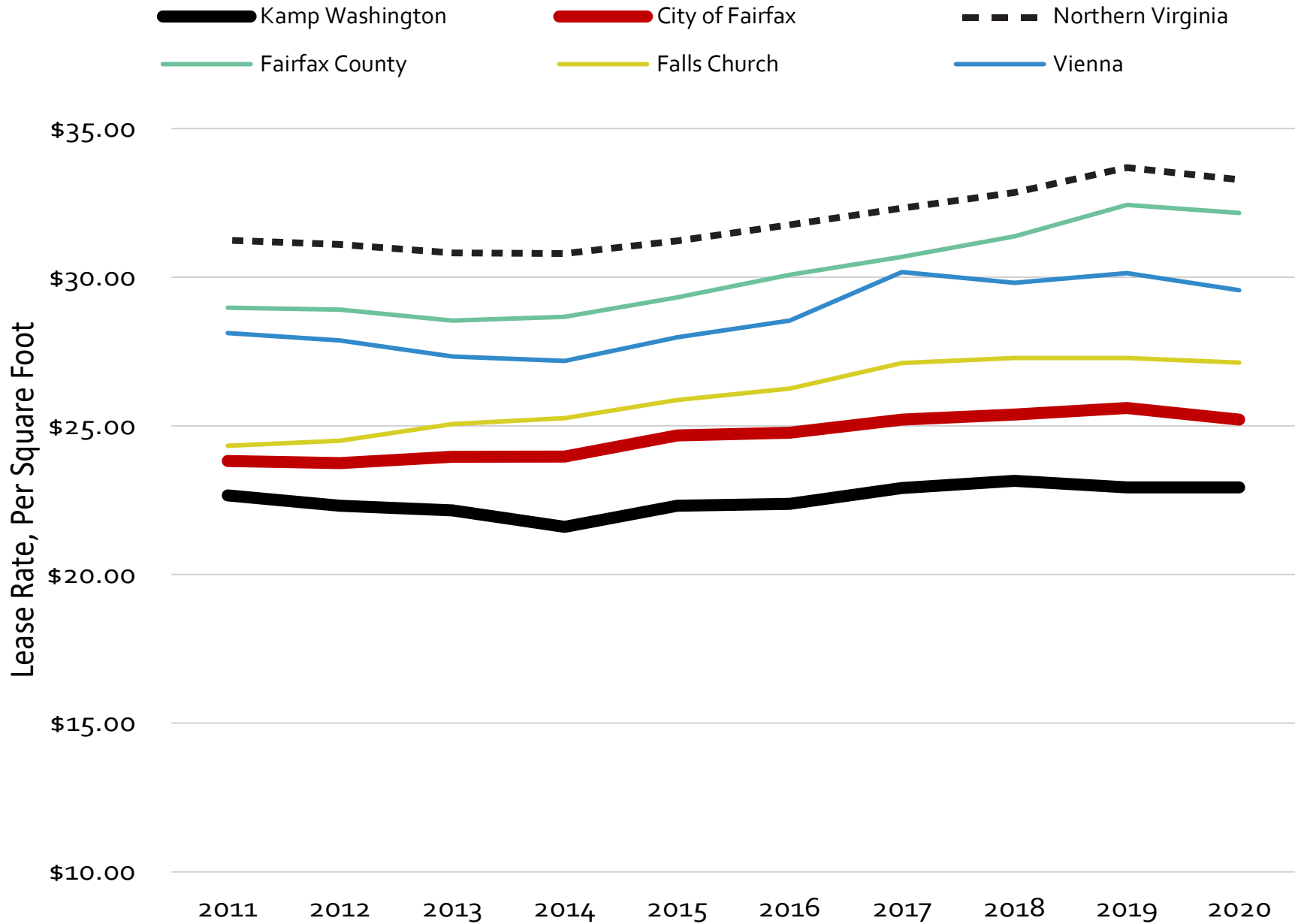
School Enrollment by Students' Place of Residence and Program Capacity.....	26
Student Yield Ratios.....	27
School Attendance Areas.....	28

Kamp Washington Offices and Retail Establishments Included in Office and Retail Lease Analyses (2011-2020)



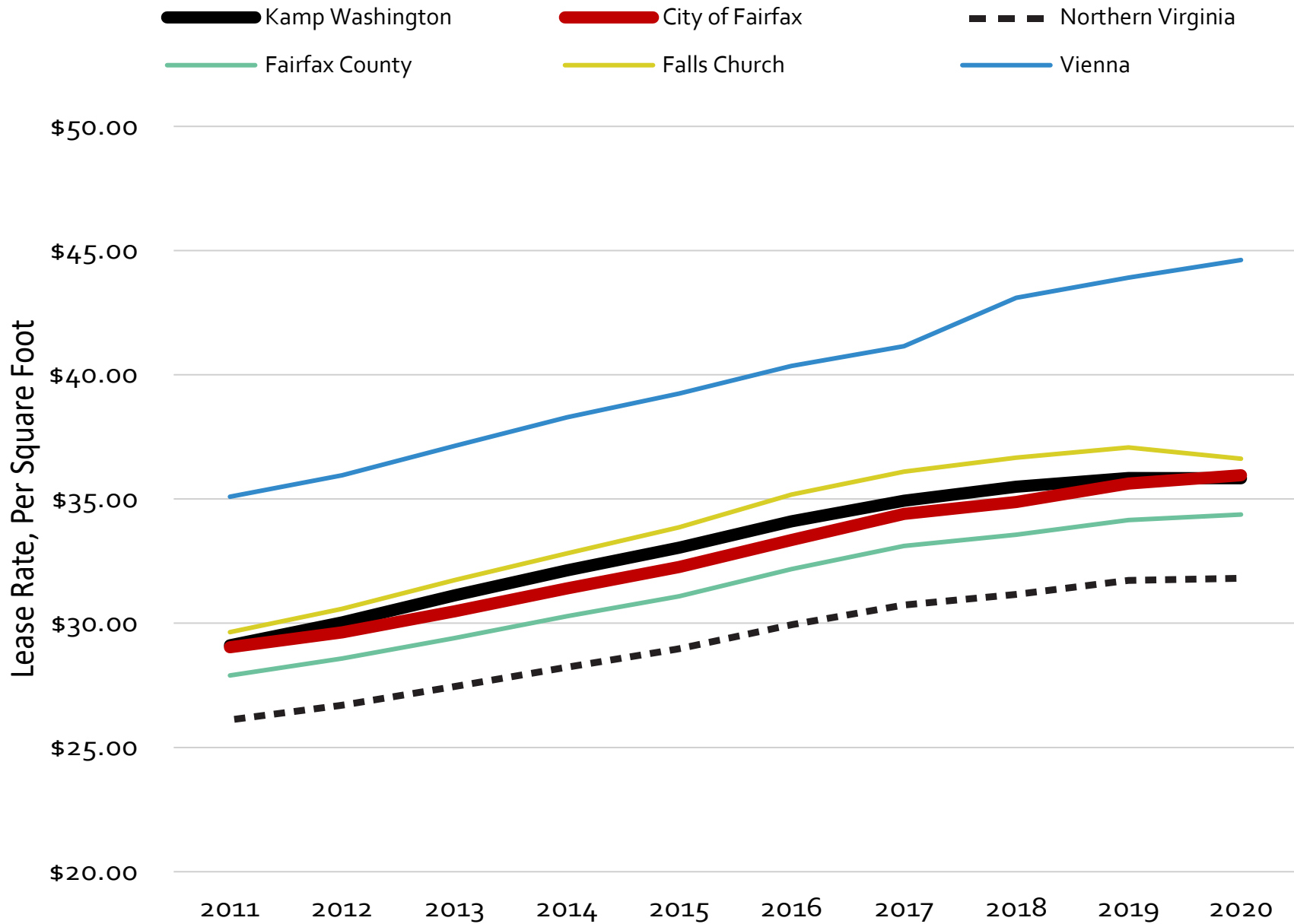
Office Lease Analysis

Kamp Washington, City of Fairfax, and Select Northern Virginia Areas, 2011-2020



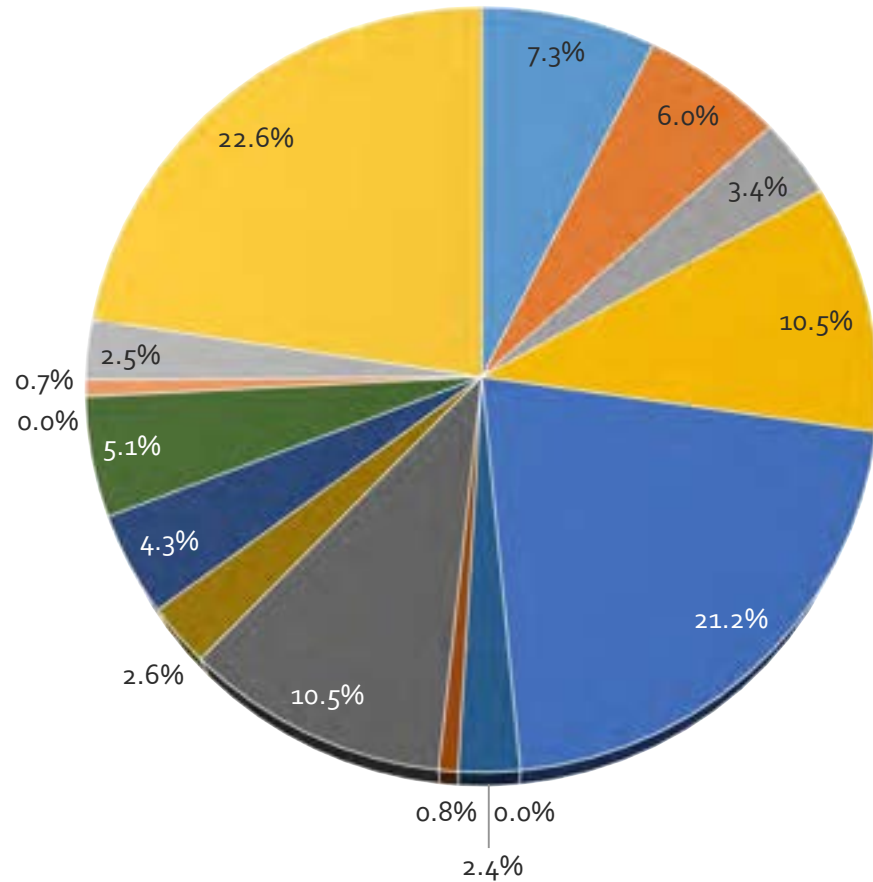
Retail Lease Analysis

Kamp Washington, City of Fairfax, and Select Northern Virginia Areas, 2011-2020

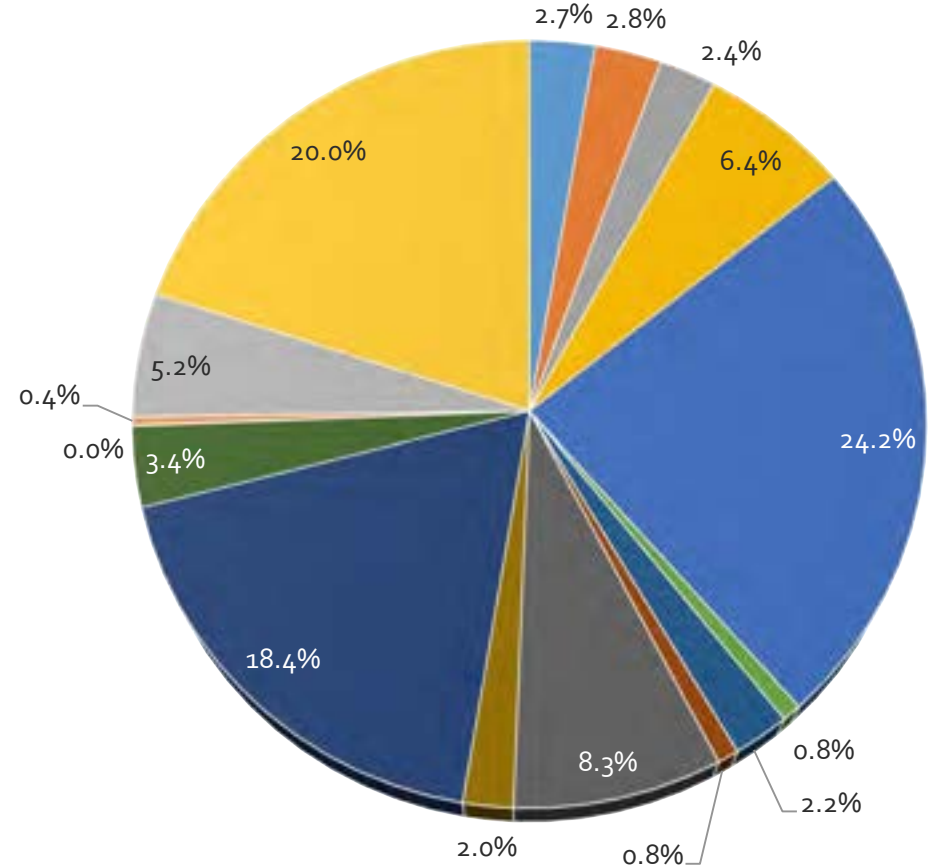


Taxable Sales as a Percentage of Consumer Goods and Services Sales, 2018

Fairfax City



Fairfax County

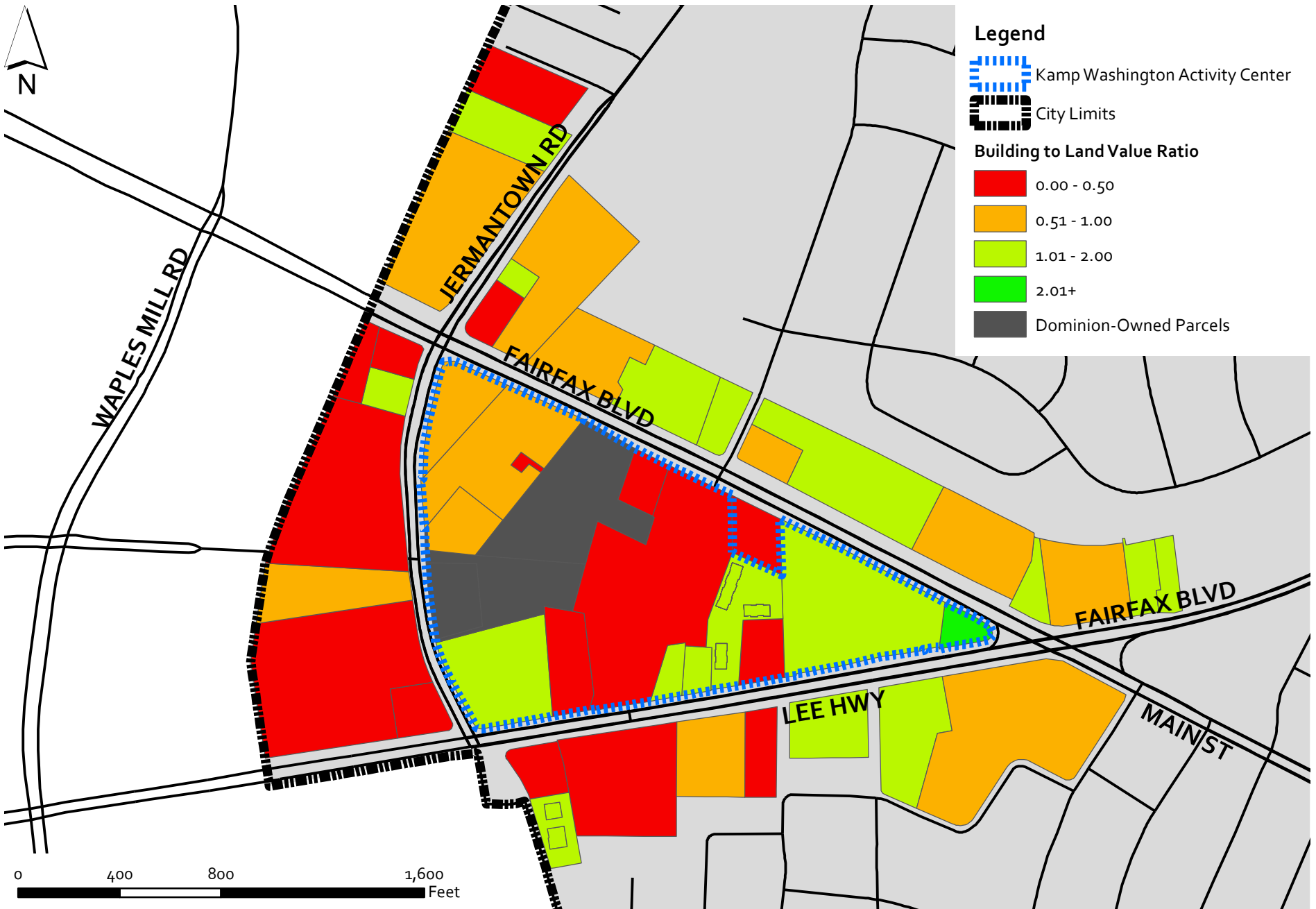


- Motor Vehicle and Parts Dealers
- Furniture and Home Furnishings Stores
- Electronics and Appliance Stores
- Building Material and Garden Equipment and Supplies Dealers
- Food and Beverage Stores
- VA ABC Stores
- Health and Personal Care Stores
- Gasoline Stations

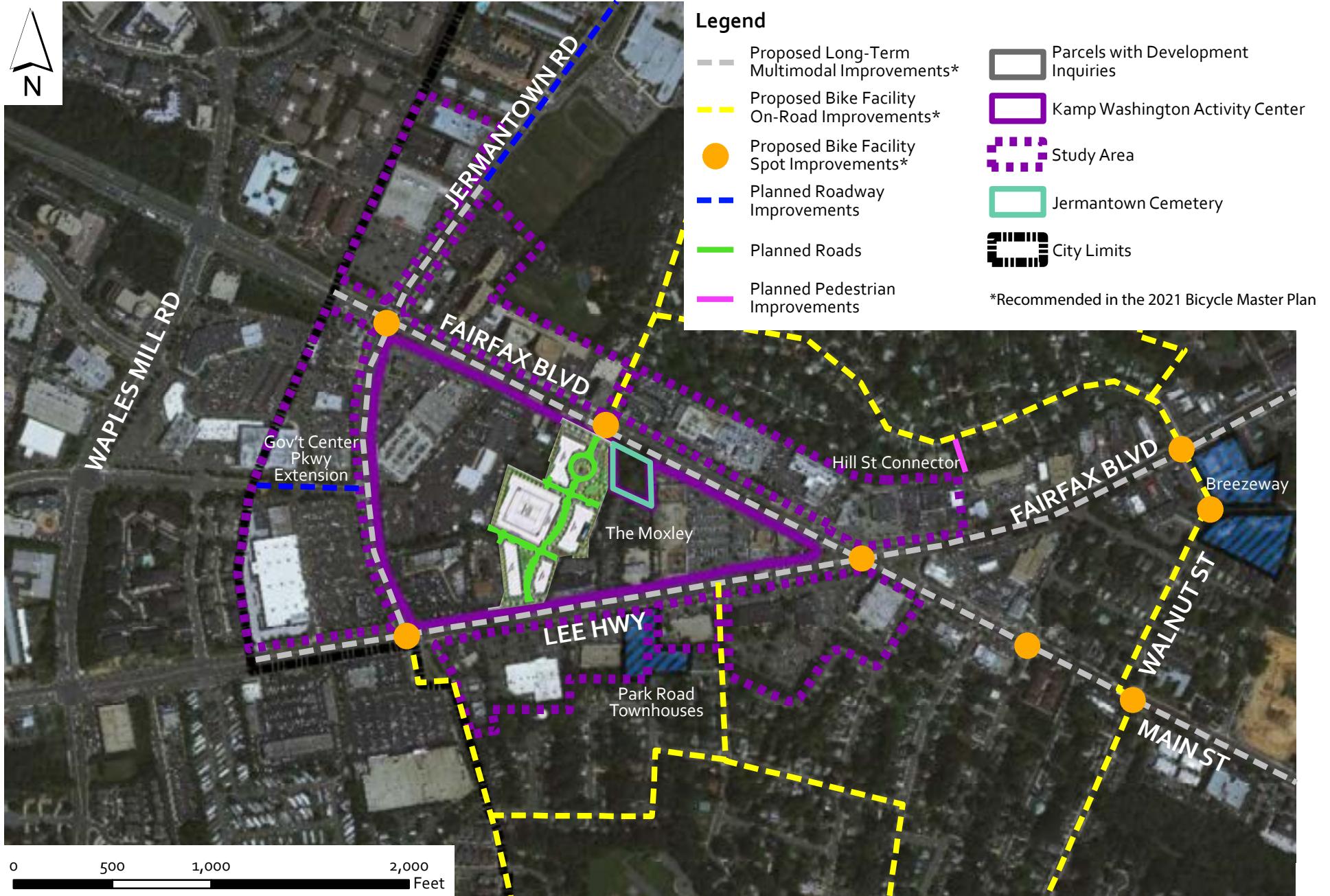
- Clothing and Clothing Accessories Stores
- Sporting Goods, Hobby, Book, and Music Stores
- General Merchandise Stores
- Miscellaneous Store Retailers
- Performing Arts, Spectator Sports, and Related Industries
- Amusement, Gambling, and Recreation Industries
- Accommodation
- Food Services and Drinking Places

Source: University of Virginia Weldon Cooper Center for Public Service, data collected March 2019

Kamp Washington and Study Area Building to Land Value Ratio

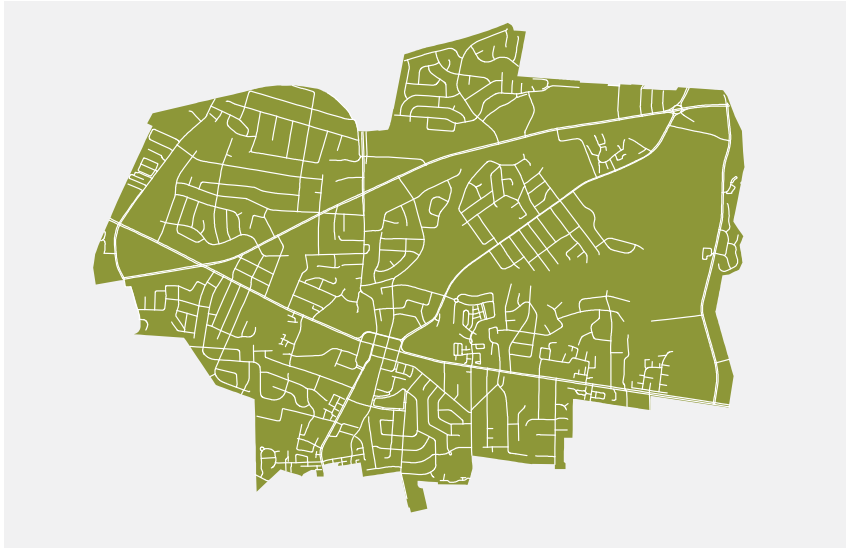


Kamp Washington Proposed and Planned Development Projects and Transportation Improvements



Transportation Network

TOTAL VEHICULAR NETWORK



FUNCTIONAL VEHICULAR NETWORK



A comparison of the entire City of Fairfax street grid to a functional grid, where all roads can be used to make connections to any other part of the city, paints a stark picture. The east side of the city almost entirely consists of neighborhoods isolated by physical barriers. The west side of the city is far more integrated with the city center and areas immediately northwest, southwest, and south of city boundaries. When the trail network and other non-motorized connections are introduced, the east side, as well as the city as a whole, sees much higher network connectivity.

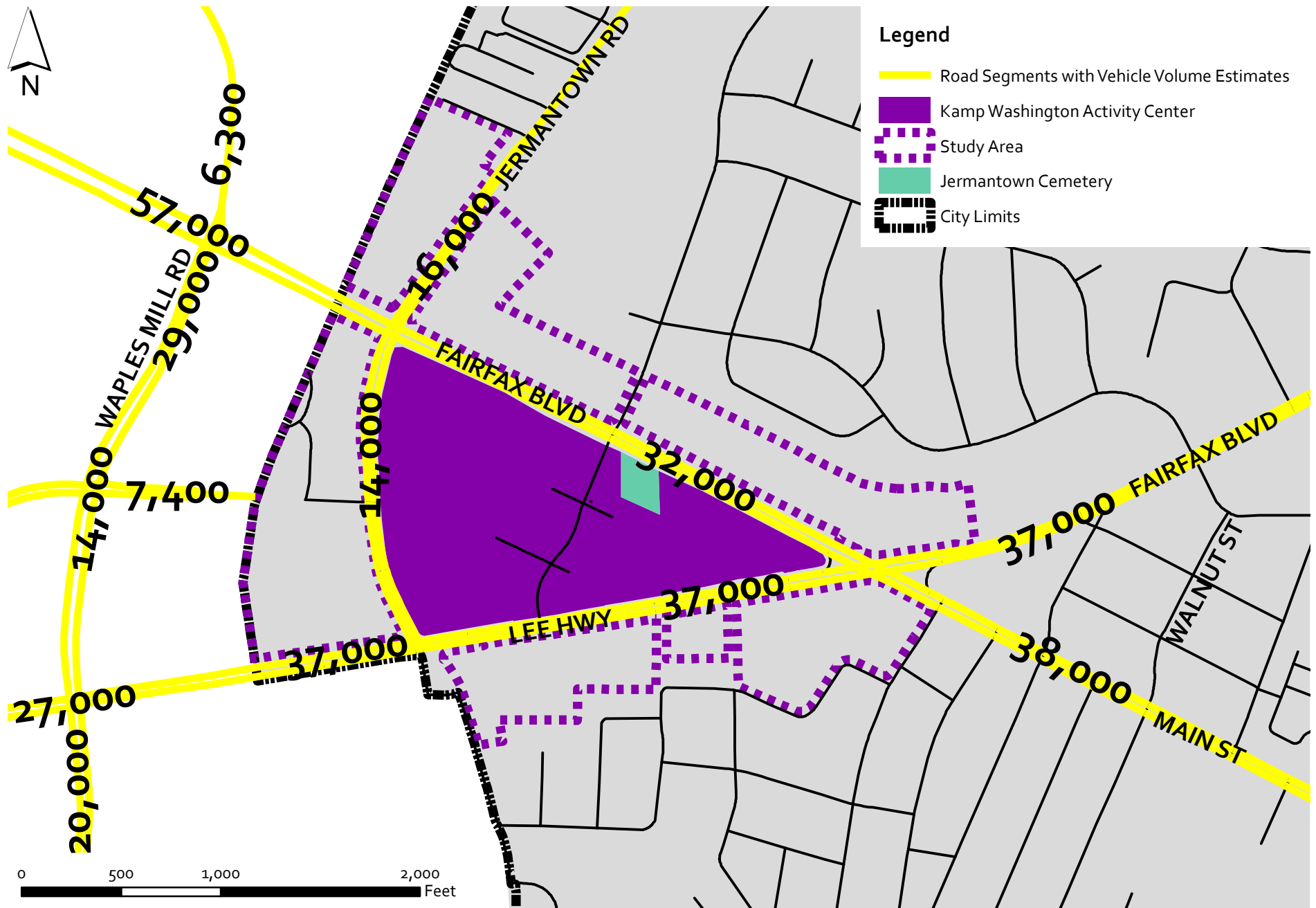
FUNCTIONAL NON-MOTORIZED NETWORK



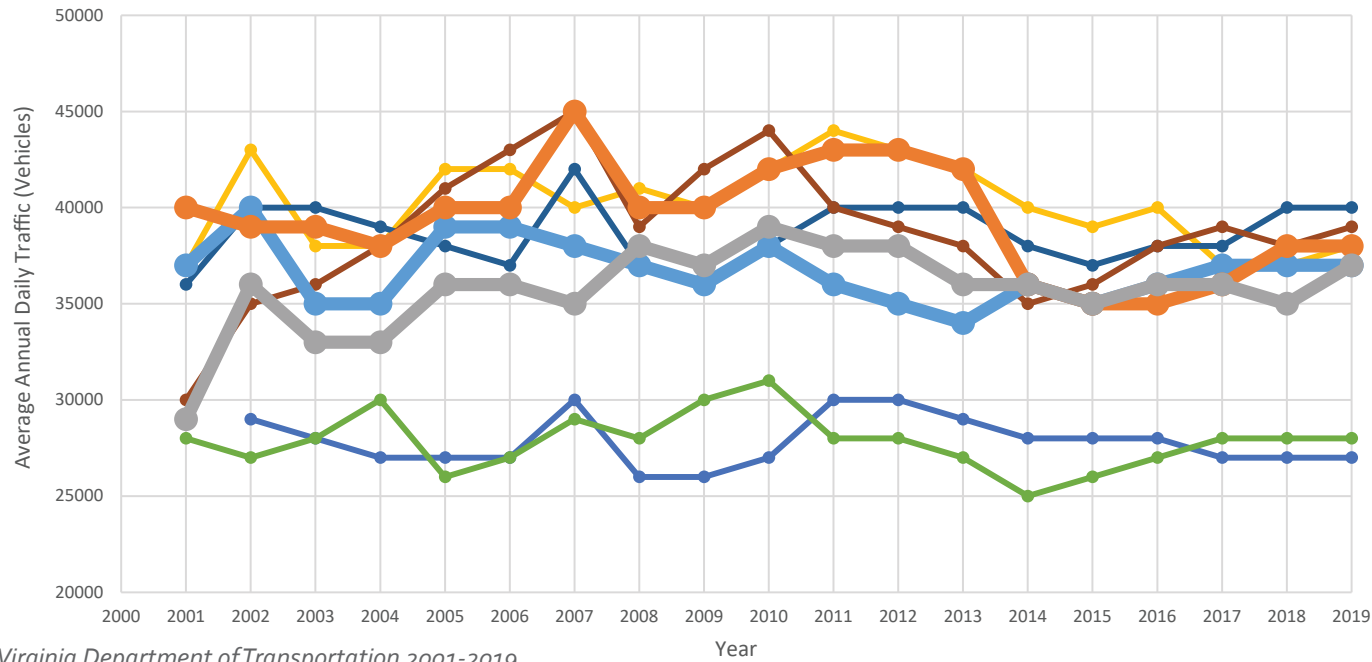
PREPARED BY NELSON\NYGAARD

SOURCE: Fairfax City, 2016

Kamp Washington Annual Average Daily Traffic Volume Estimates, 2019



Annual Traffic Trends



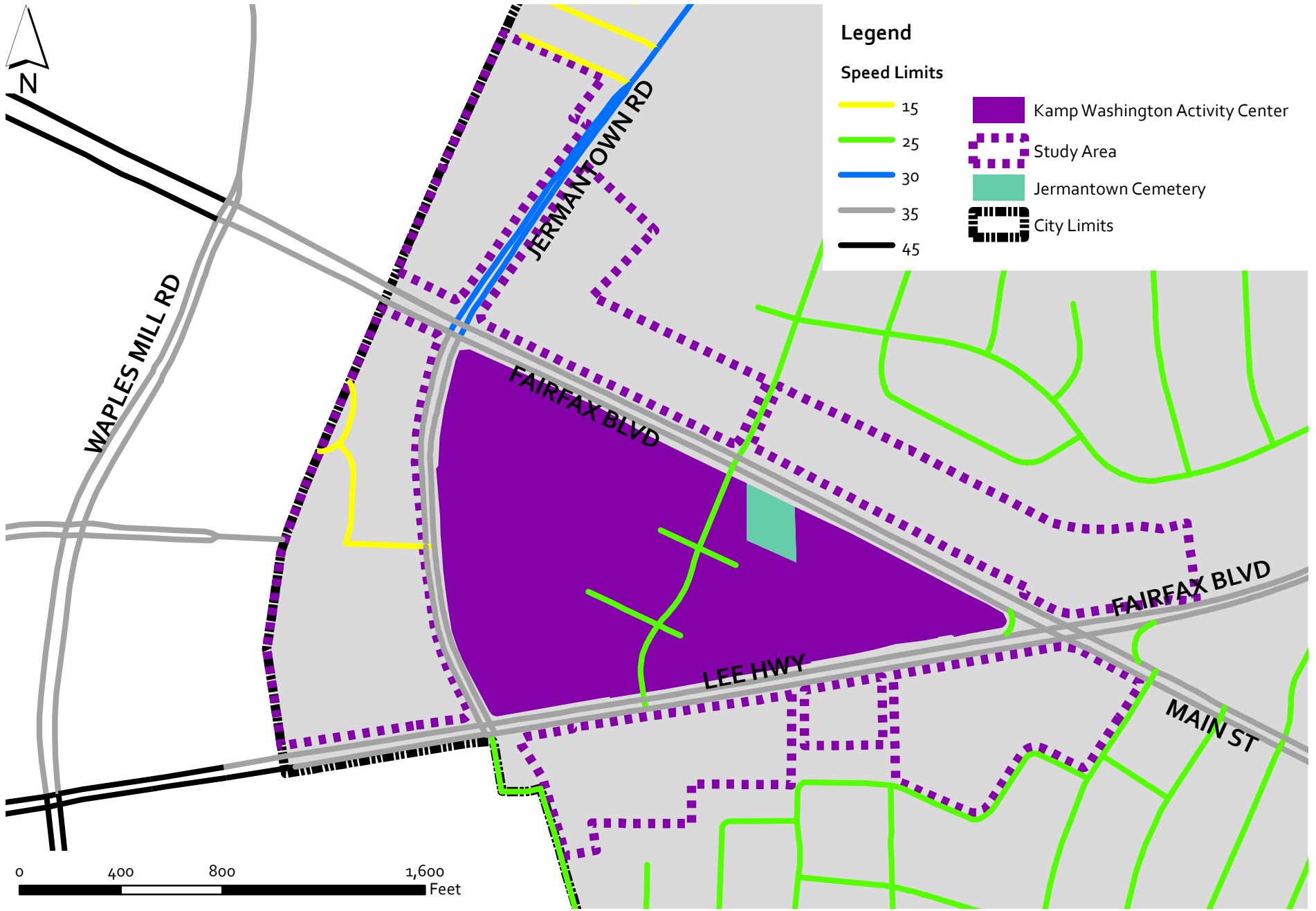
SOURCE: Virginia Department of Transportation 2001-2019
 PREPARED BY NELSON\NYGAARD



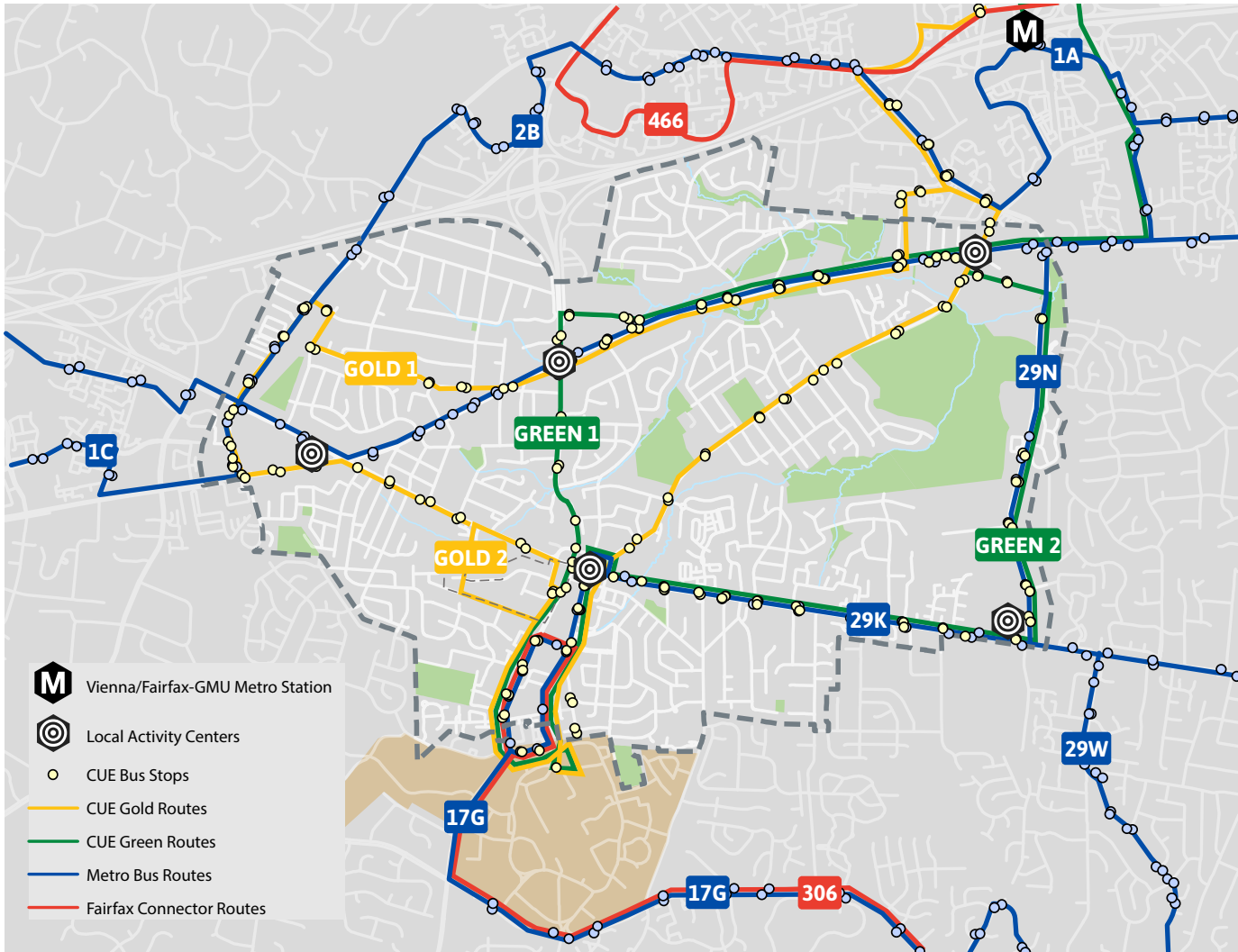
- (1) US 29 between Jermantown Road and US 50/Main Street
- (2) Main Street between US 29/50 and West Street
- (3) US 29/50 between 29/Lee Highway and Chain Bridge Road
- (4) US 29/50 between Plantation Parkway and Draper Drive
- (5) Pickett Road between Main Street and Colonial Avenue
- (6) Chain Bridge Road between City Line and Judicial Drive
- (7) Main Street between Old Lee Highway and Whitacre Road
- (8) Chain Bridge Road between US 29/50 and Interstate 66

Traffic on most arterials has remained relatively stable over the past 19 years, with some fluctuation from year to year.

Kamp Washington Posted Speed Limits



Transit Coverage

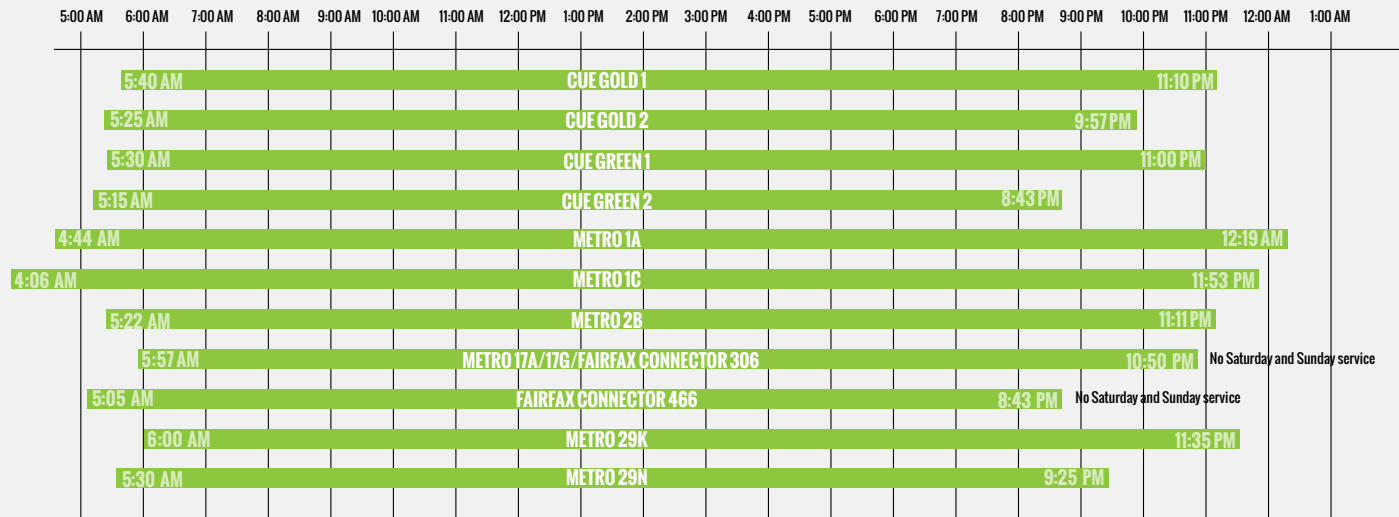


The City of Fairfax is crisscrossed by a mix of CUE, Metro, and Fairfax Connector bus service. Multiple routes serve each of the local activity centers, the Vienna/Fairfax Metro station, and George Mason University.

SOURCE: Washington Metropolitan Area Transit Authority, City-University Energysaver, Fairfax Connector, 2016
PREPARED BY NELSON\NYGAARD

Transit Frequency And Span

WEEKDAY START AND STOP TIMES

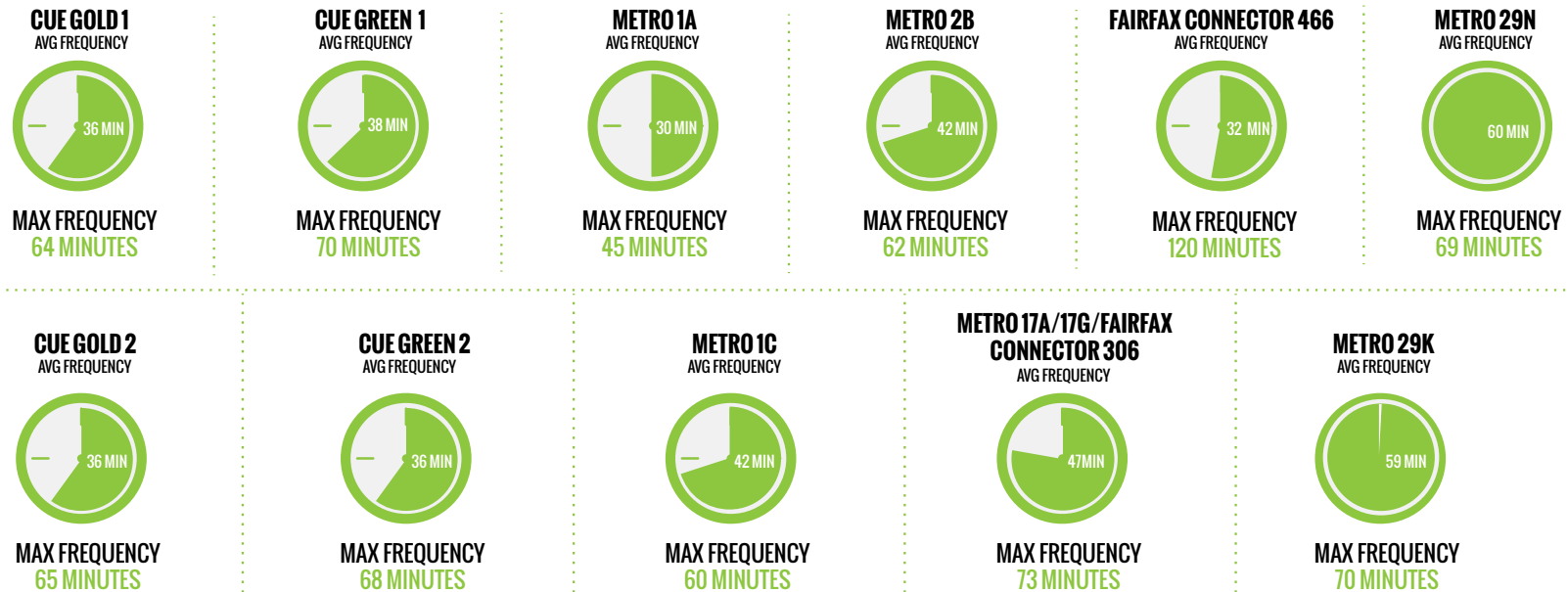


All routes run from early in the morning well into the evening on weekdays. There is Saturday and Sunday coverage on all but a pair of route groups.

SOURCE: Washington Metropolitan Area Transit Authority, City-University Energysaver, Fairfax Connector, 2016

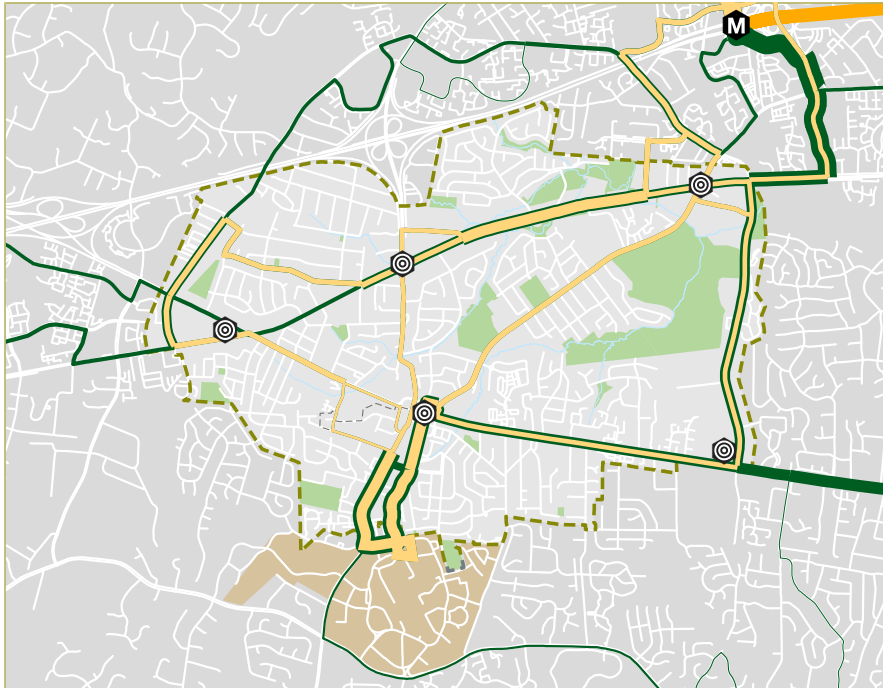
PREPARED BY NELSON\NYGAARD

AVERAGE TIME BETWEEN BUSES



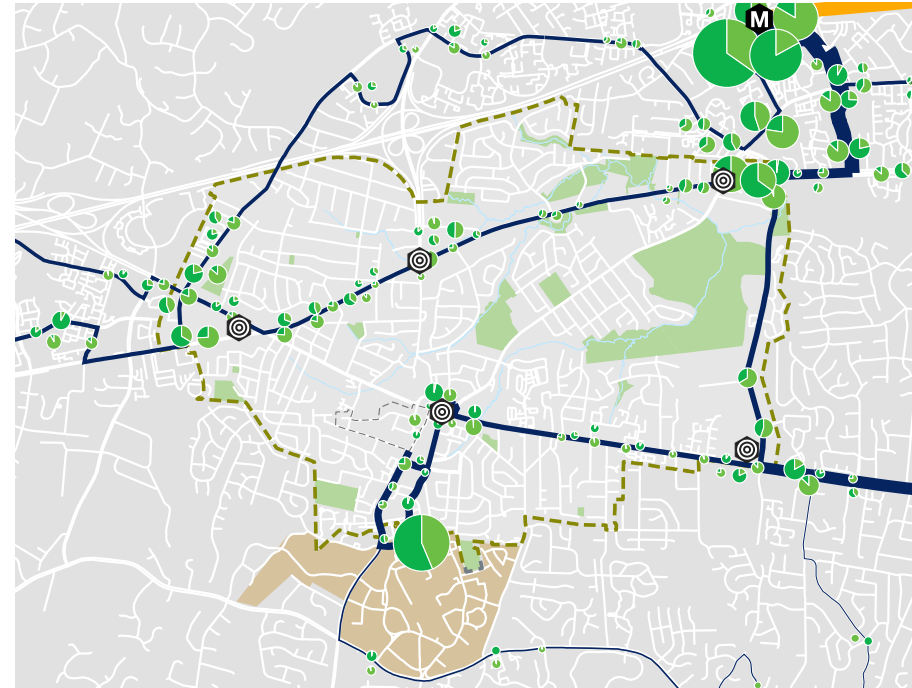
Bus Ridership

BUS RIDERSHIP - CUE, TOTAL SERVICE



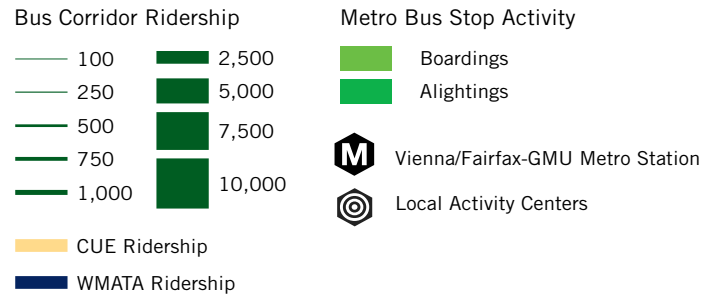
SOURCE: Metropolitan Washington Council of Governments, 2014

BUS RIDERSHIP + BOARDINGS/ALIGHTINGS - WMATA

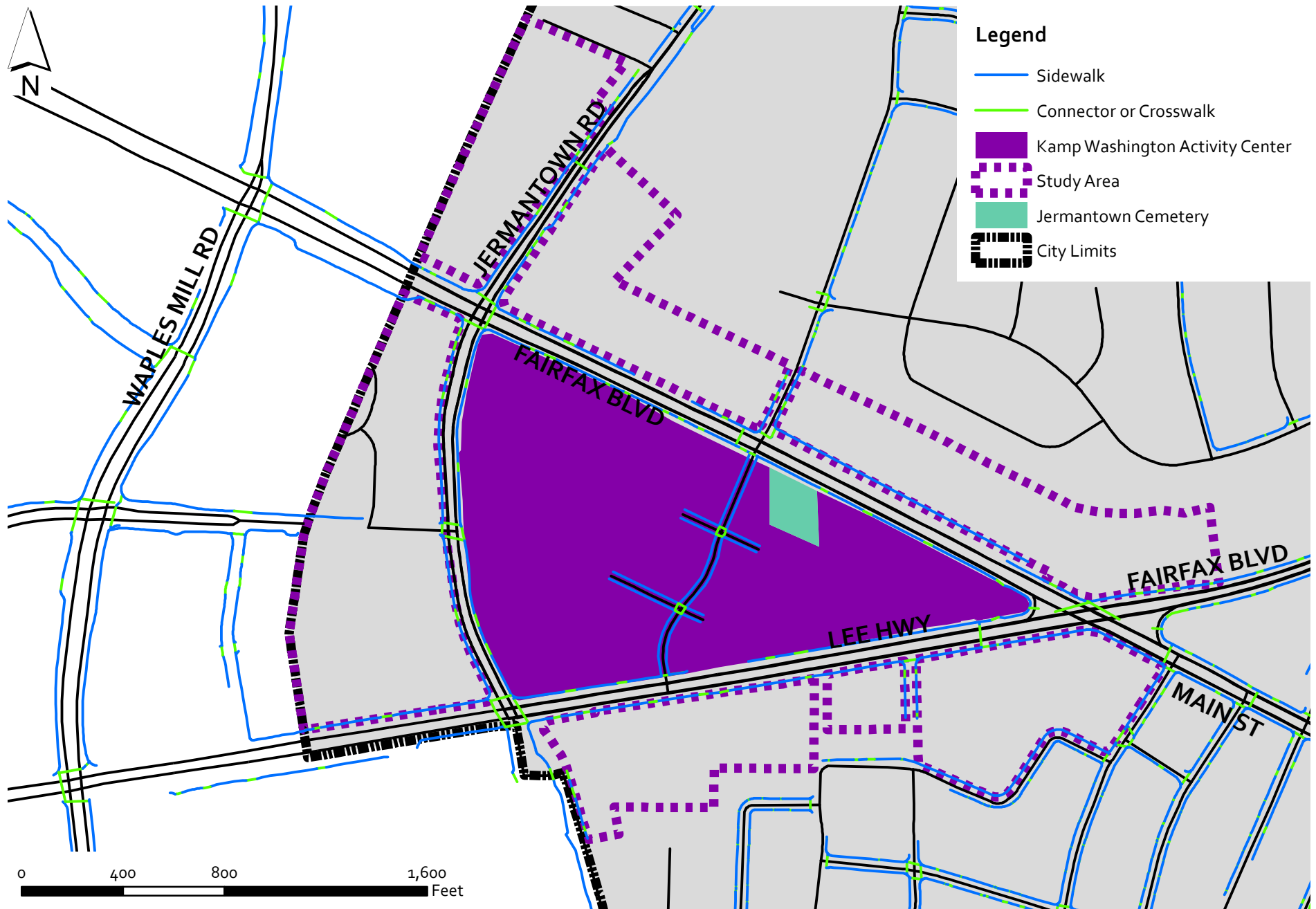


SOURCE: Washington Metropolitan Area Transit Authority, 2015

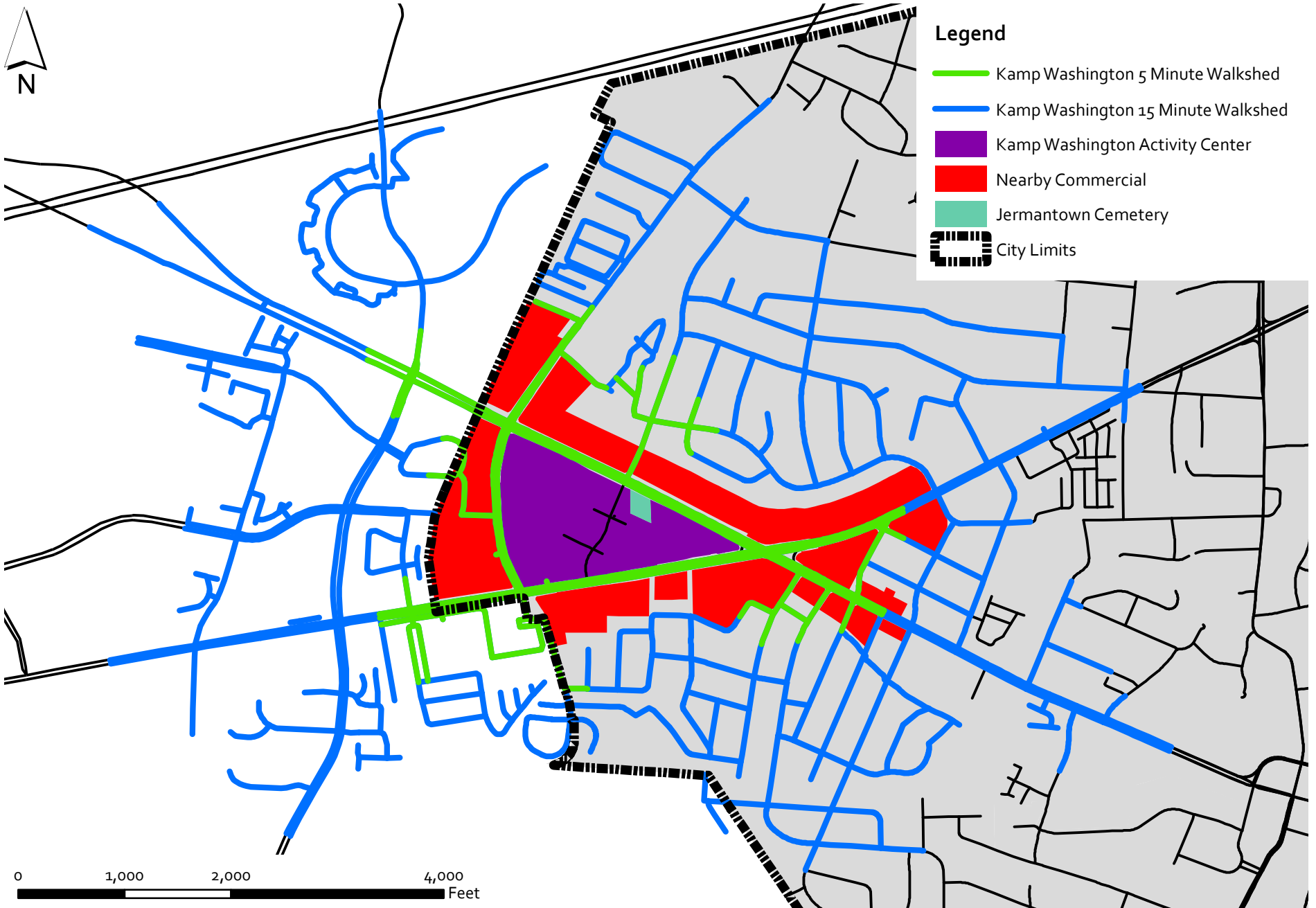
Metro bus stop activity and overall bus corridor activity shows that buses are overwhelmingly used to access the Vienna/Fairfax-GMU Metro station. George Mason University and the Fairfax Circle local activity center are secondary destinations routinely accessed by bus. CUE constitutes a large portion of ridership on transit corridors within the City of Fairfax.



Kamp Washington Sidewalk Network

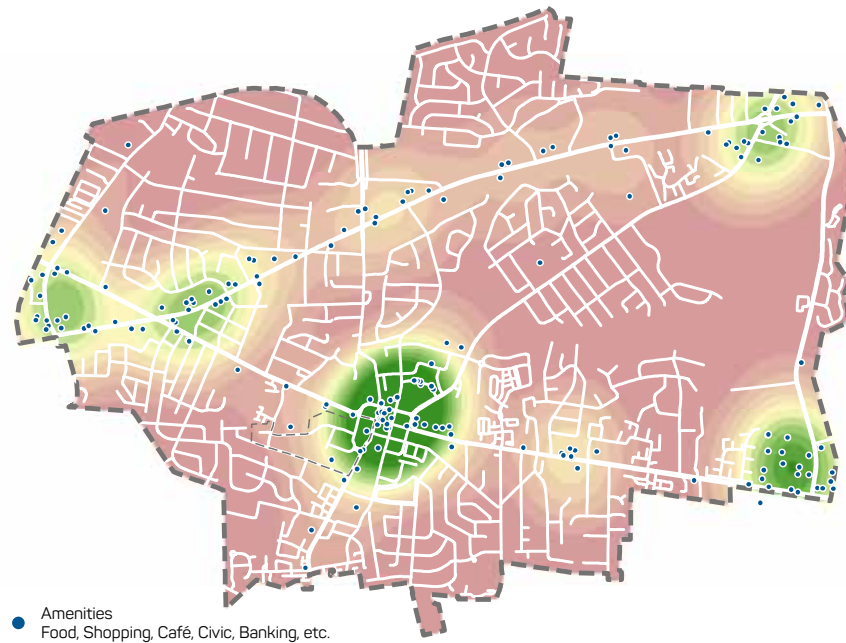


Kamp Washington 15 Minute Walkshed



Concentration of Community Amenities and Walkable Infrastructure

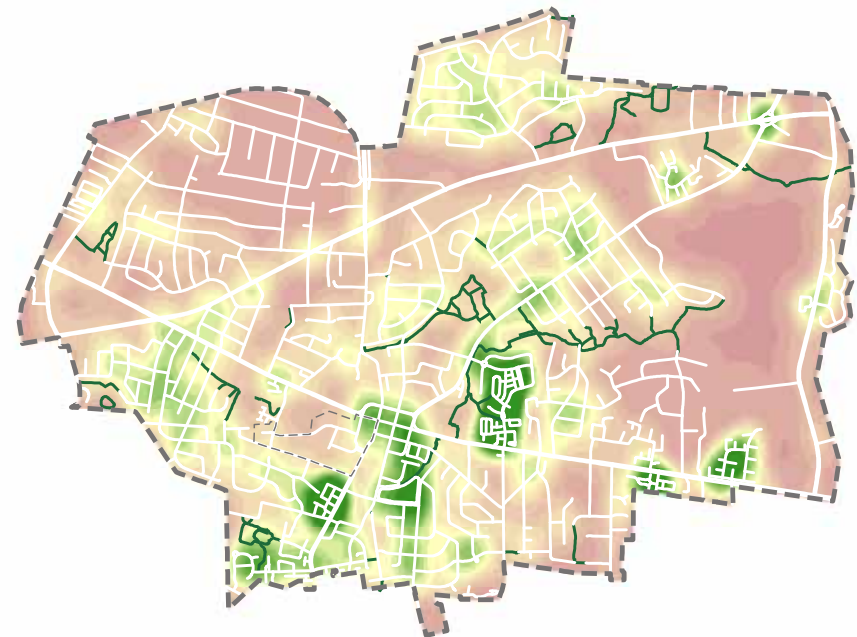
COMMUNITY AMENITY CONCENTRATION



SOURCE: Google Earth, 2016

PREPARED BY NELSON\NYGAARD

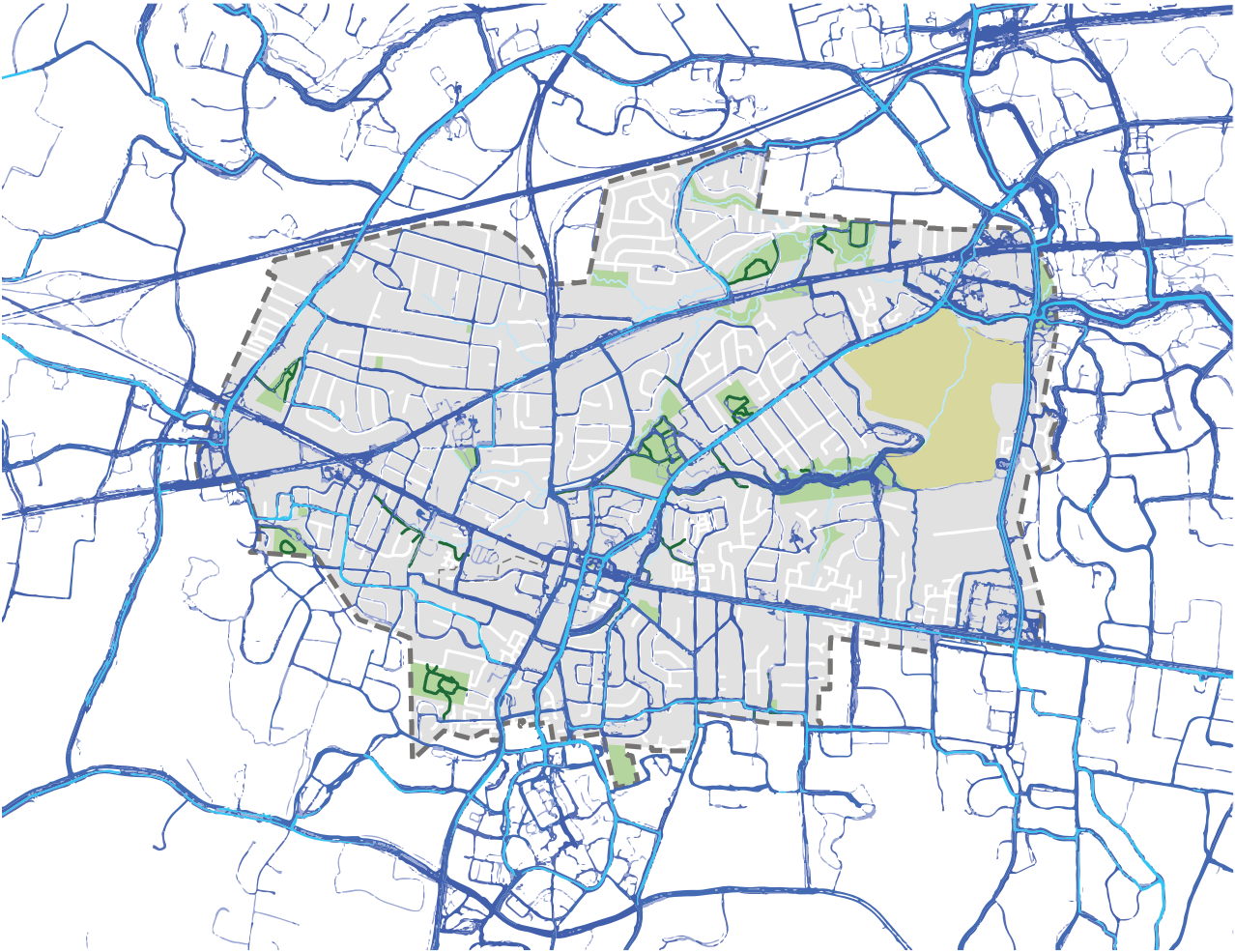
WALKABLE INFRASTRUCTURE CONCENTRATION



SOURCE: Fairfax City, 2016

Portions of the City of Fairfax could have excellent walkability based on proximity to amenities alone, however a mismatch between the location of those amenities/attractions (including restaurants, cafés, bars, both small and large format retail, pharmacies, banks, government offices, post offices, schools, and museums) and walkable infrastructure features (sidewalk coverage, high intersection density) reduces the overall attractiveness of walking in the city. While walkable areas are dispersed throughout the city, the Old Town local activity center uniquely combines a high destination count with a high concentration of walkable infrastructure. The Old Town infrastructure does come with some limitations however, sidewalks are narrow and lack a protective buffer or planting strip between the walkway and the curb.

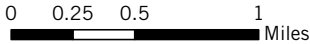
Bicycle Activity



Other than the city's impressive -street trail network, dedicated bicycle facilities are limited to a shared-use path along George Mason Boulevard, bicycle lanes on Breckinridge Drive, and recently installed bike lanes on Layton Hall Drive and University Drive. As a result, bicycle activity is drawn to major vehicular corridors and limits riders to those with high bicycle stress tolerance.

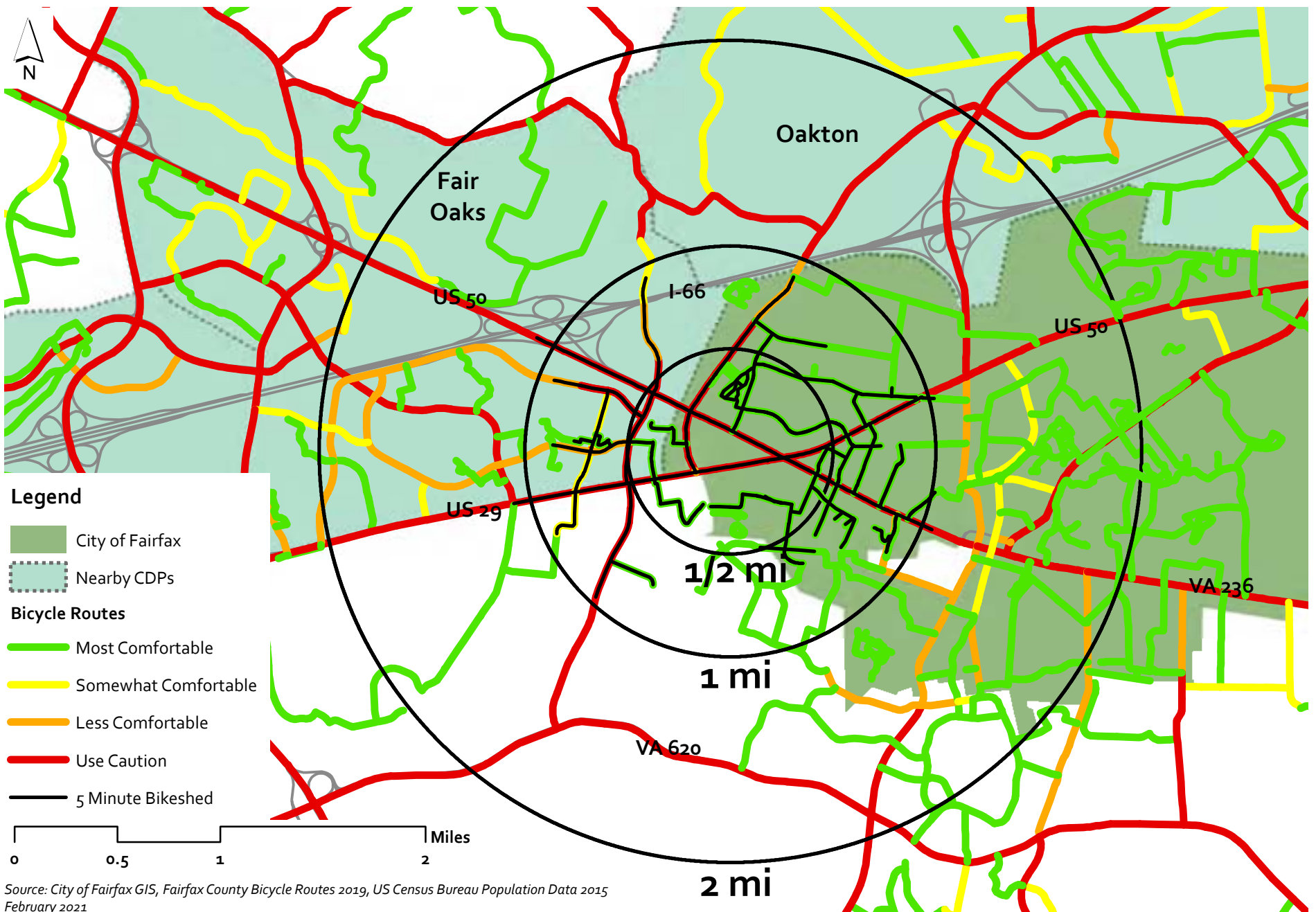
LEGEND

- Bicycle Facilities
- Off-Street Trails
- Low Activity
- High Activity



SOURCE: Quality Counts, 2012; Fairfax City, 2016
PREPARED BY NELSON\NYGAARD

Regional Bicycle Routes

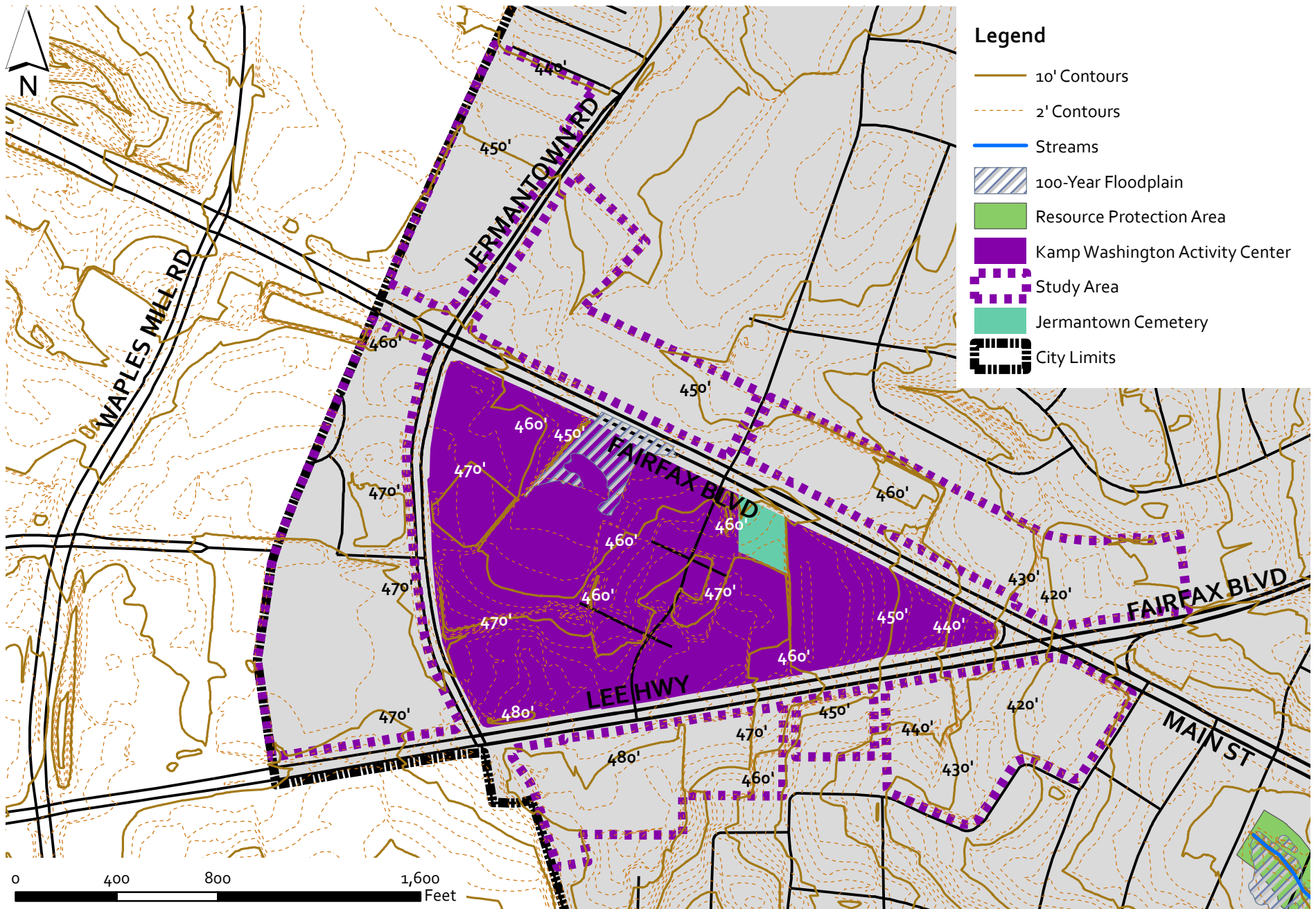


Source: City of Fairfax GIS, Fairfax County Bicycle Routes 2019, US Census Bureau Population Data 2015 February 2021

Building Age In and Near Kamp Washington



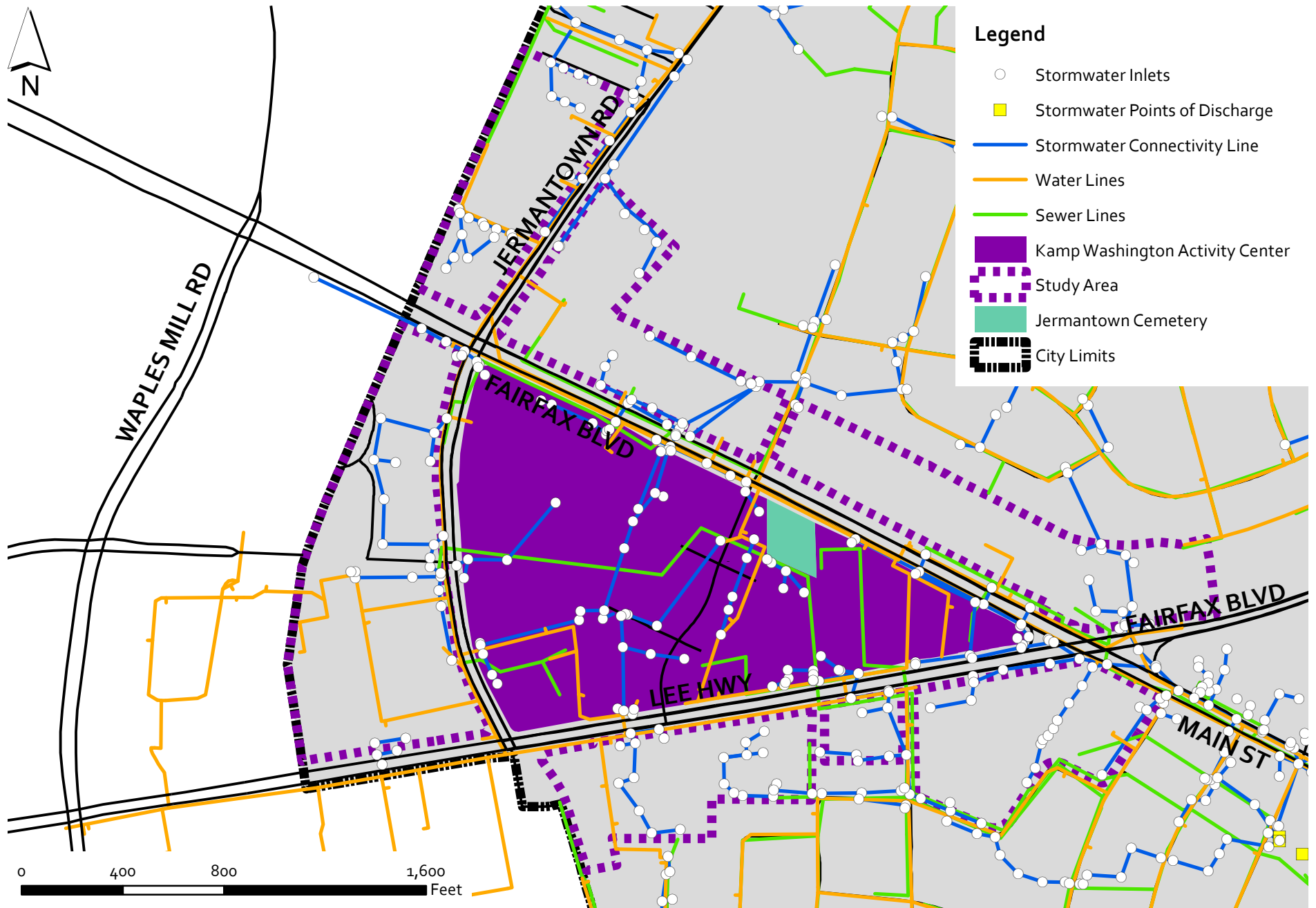
Kamp Washington Land Constraints and Environmental Features



Kamp Washington Building Footprints and Impervious Surface



Kamp Washington Water and Sewer Infrastructure



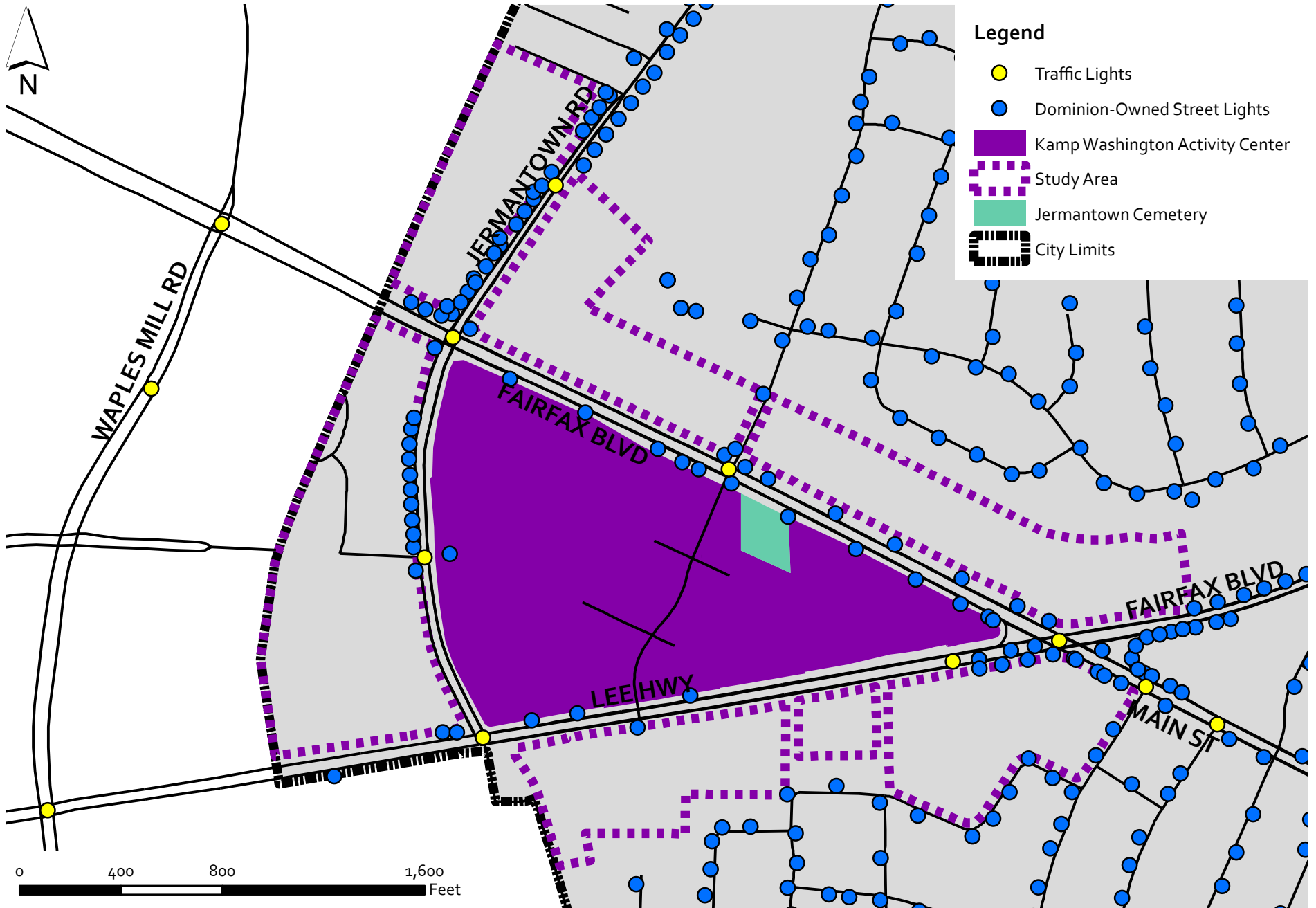
Legend

- Stormwater Inlets
- Stormwater Points of Discharge
- Stormwater Connectivity Line
- Water Lines
- Sewer Lines
- Kamp Washington Activity Center
- Study Area
- Jermantown Cemetery
- ▭ City Limits

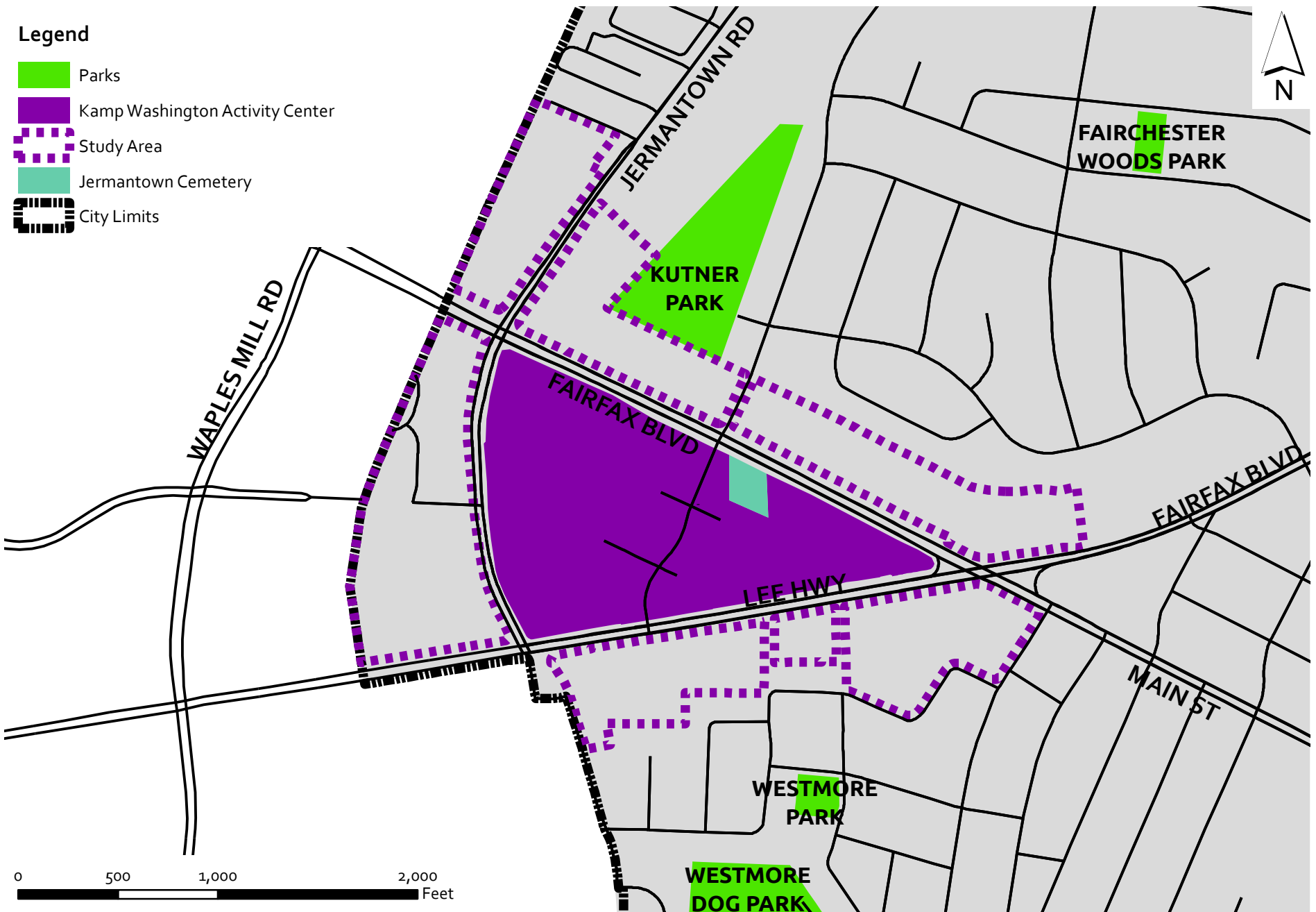
February 2021

Source: City of Fairfax GIS

Kamp Washington Street Lights and Traffic Lights



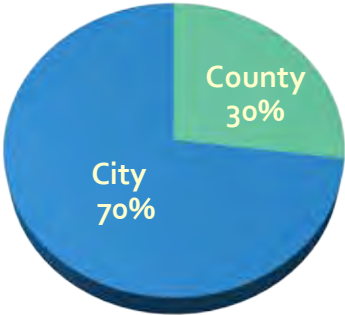
Kamp Washington Parks



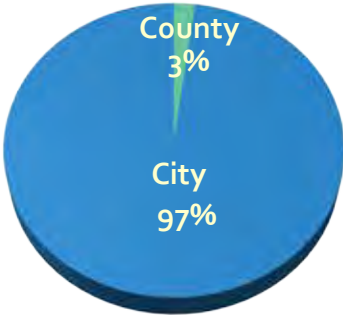
School Enrollment by Students Place of Residence and Program Capacity

Fairfax County Public Schools (FCPS) located in City of Fairfax, 2019-2020

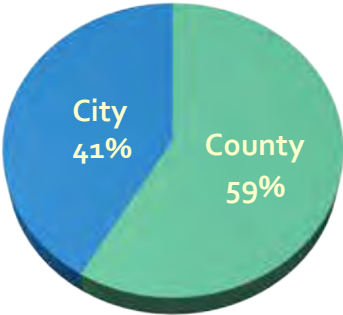
**PROVIDENCE
ELEMENTARY SCHOOL**



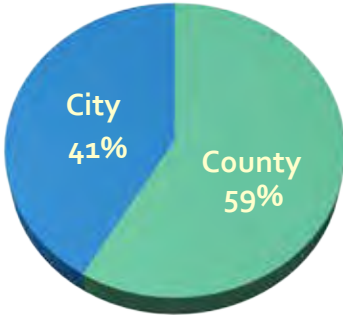
**DANIELS RUN
ELEMENTARY SCHOOL**



**LANIER
MIDDLE SCHOOL**



**FAIRFAX
HIGH SCHOOL**

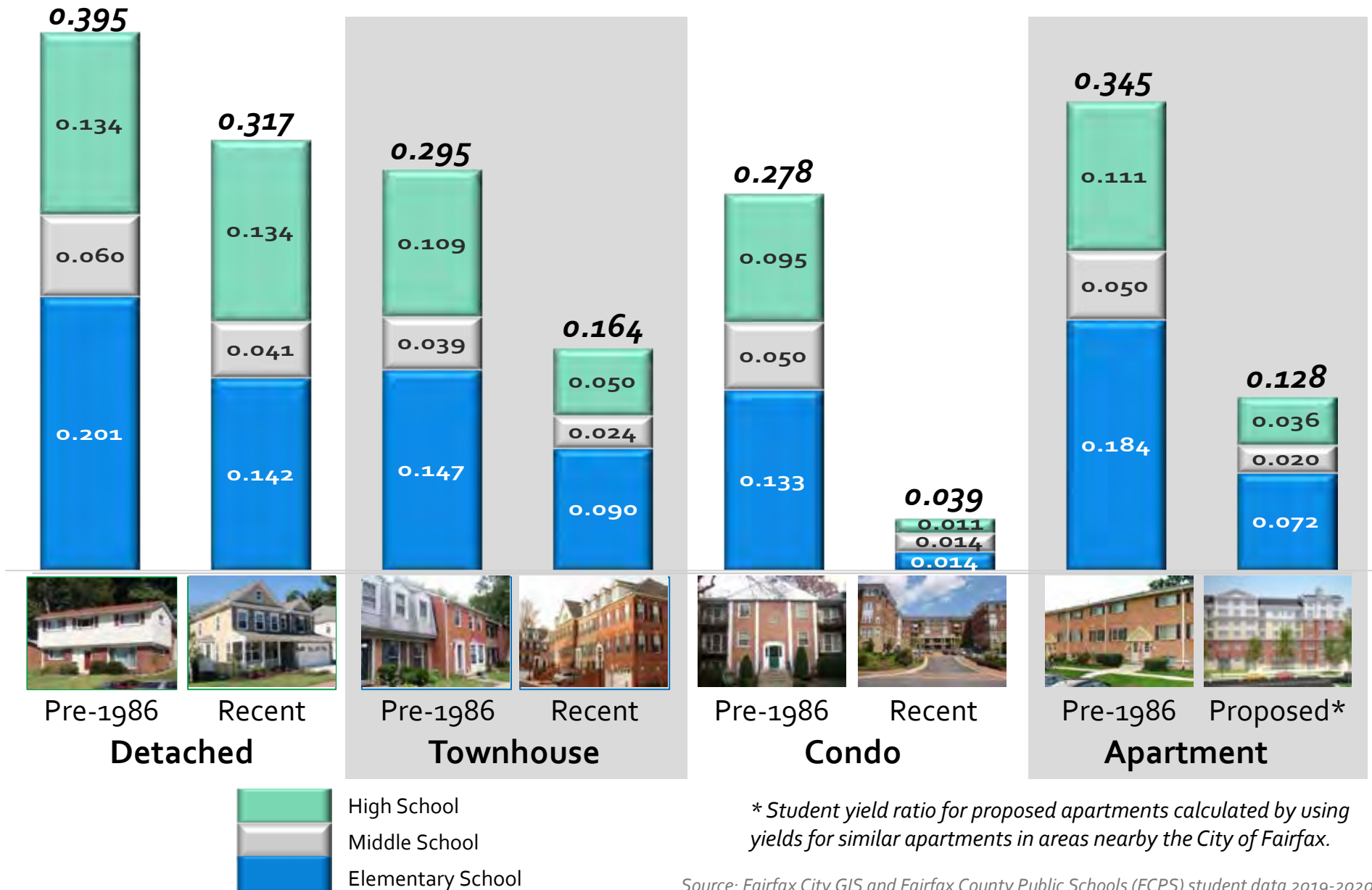


School	2019-2020 Program Capacity	2010-2011 Enrollment	2019-2020 Enrollment	2019-2020 % of Capacity	2024-2025 Projected Enrollment
Fairfax High	2,407	2,375	2,336	97%	2,403
Lanier Middle	1,222	1,236	1,055	86%	1,171
Daniels Run	786	783	758	96%	751
Providence	910	929	908	100%	961

Source: Fairfax County Public Schools (FCPS) student data 2019-2020

Student Yield Ratios

Fairfax City, 2019-2020

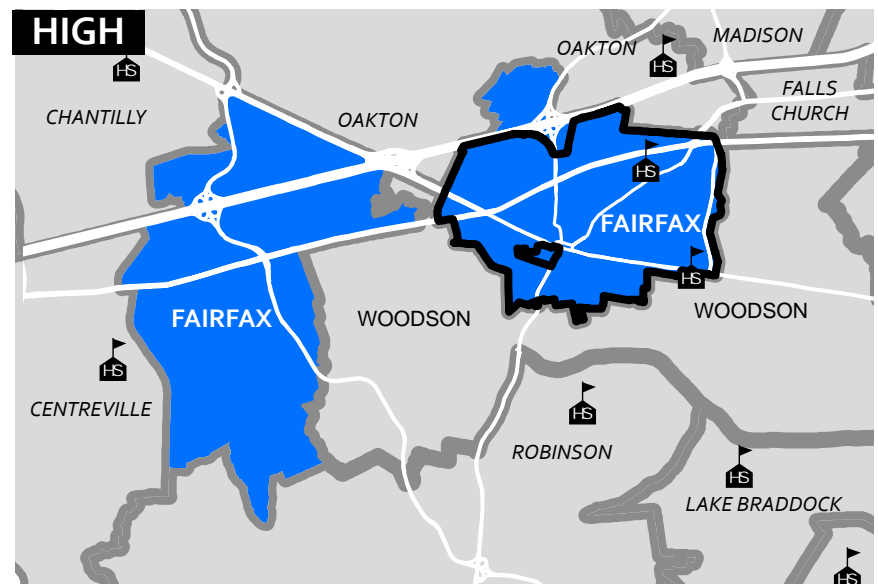
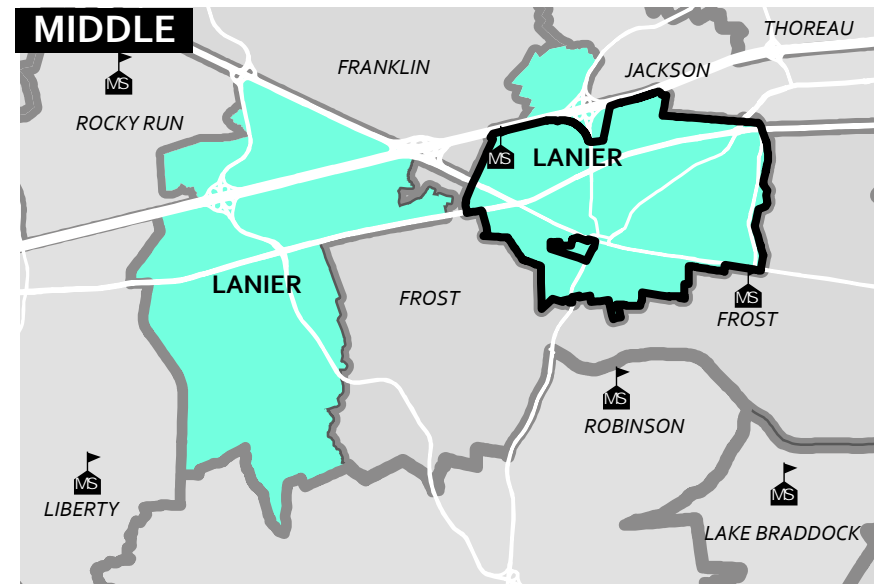
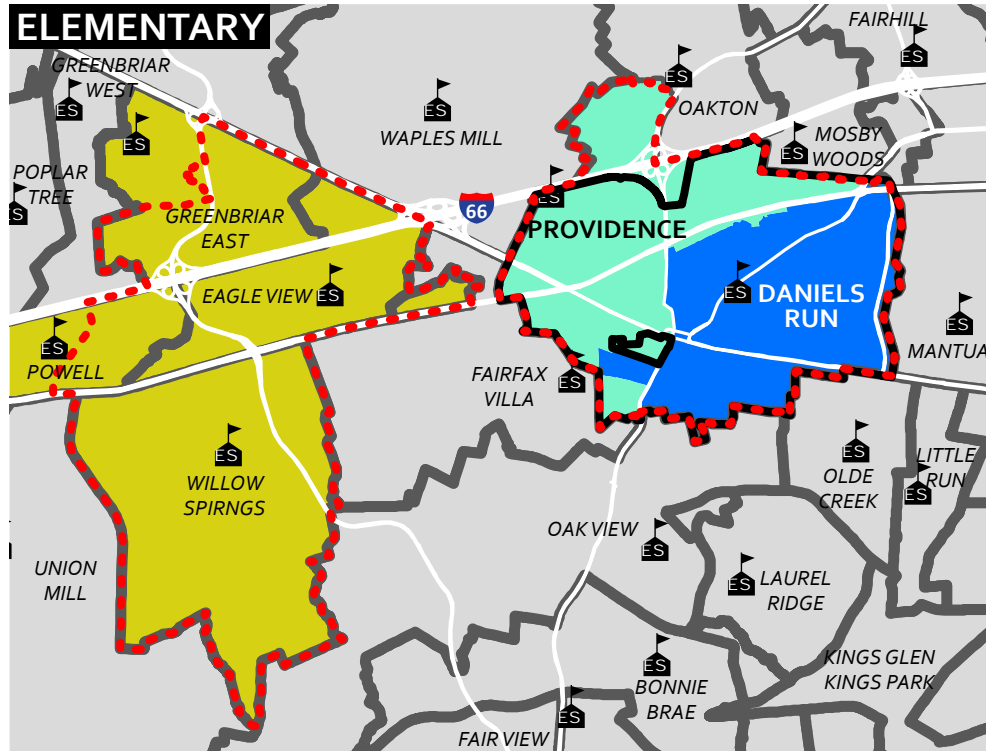


* Student yield ratio for proposed apartments calculated by using yields for similar apartments in areas nearby the City of Fairfax.

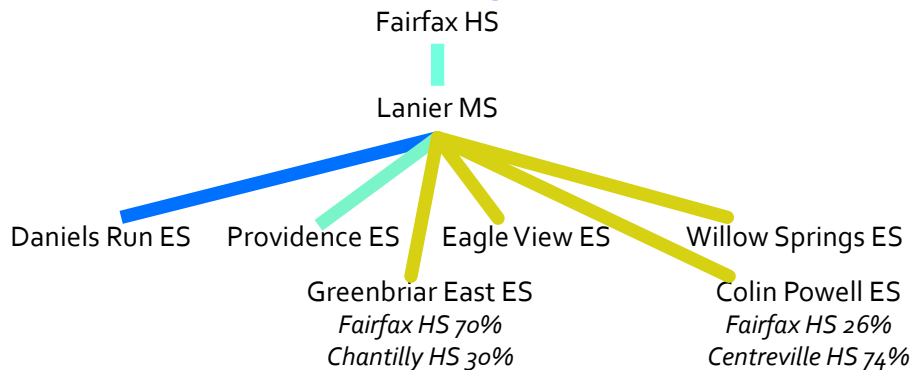
Source: Fairfax City GIS and Fairfax County Public Schools (FCPS) student data 2019-2020

School Attendance Areas

Fairfax County Public Schools, 2016-2017



Elementary and Middle School Feeders into Fairfax High School



Source: Fairfax City GIS and Fairfax County School Attendance Area data 2016-2017