

Streetscape Elements

TRASH CAN

Description

Trash can - black in color; style to match Old Town Square can or City Park can
Recycling can - blue in color; style to match Old Town Square can or City Park can

Style

- Side opening
- Logo banding optional

Size

- 24" diameter
- 39" height
- 36 gallon side-opening, stainless steel hinge and latch, surface mounted

Materials and Color

- Cast aluminum, spun aluminum top
- Cast iron base
- Stainless steel fasteners
- Matte Black for trash; blue for recycling
- Polyester powder-coat

Location and Setbacks

- Minimum 24 inches setback from face of curb
- Do not exceed 1 receptacle (or 2 if waste/recycling combination) per 300 linear feet (LF) of streetscape

Requirements

- Landscape Forms Chase Park Litter and Recycling Receptacles or equal
- Global Industries Outdoor Steel with Rain lid or equal

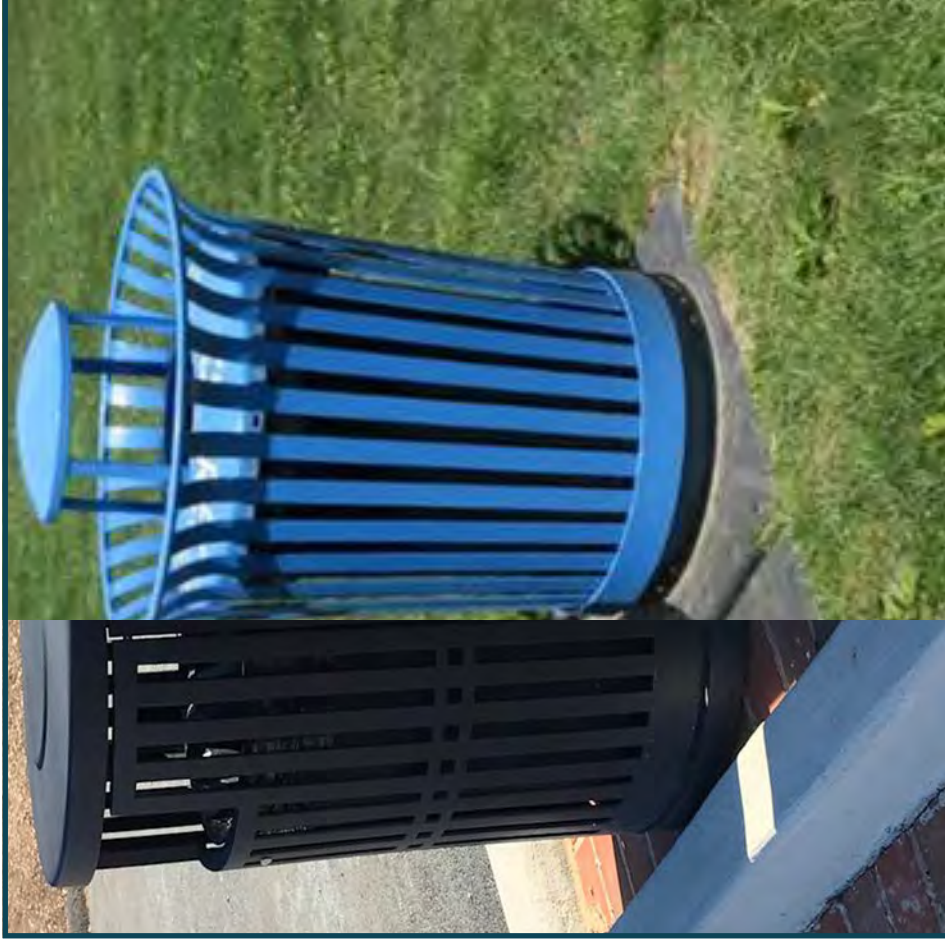
Sources

Landscape Forms, Inc.
7800 E. Michigan Ave.
Kalamazoo, MI 49048
www.landscapeforms.com

Keystone Ridge Designs, Inc.
670 Mercer Road
Butler, PA 16001
www.keystoneridgedesigns.com

Victor Stanley
PO Drawer 330
Dunkirk, MD 20754
www.victorstanley.com

Global Industrial
1.888.978.7759
www.globalindustrial.com



City of Fairfax trash can at Old Town Square, left and recycling trash can from City Park, right

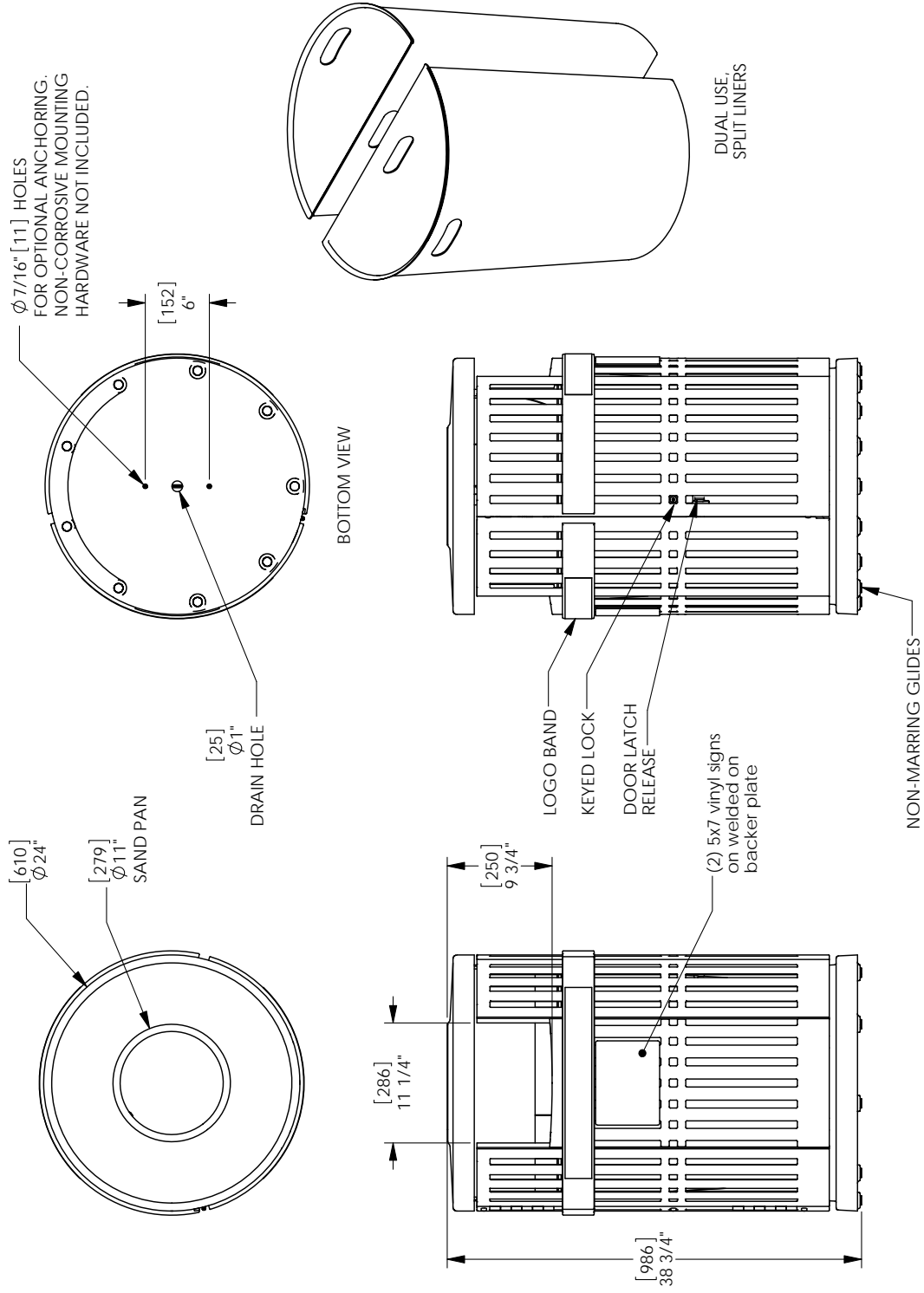
5

Streetscape Elements

Chase Park®
Product Drawing

Side Opening Litter Receptacle, Dual use, with sand pan, logo band, lock, 2 standard 5x7 signs

www.landscapiforms.com
Date: 7/17/2014
Ph: 800.521.2546



CONFIDENTIAL DRAWING INFORMATION CONTAINED HEREIN IS THE PROPERTY OF LANDSCAPE FORMS, INC. INTENDED USE IS LIMITED TO DESIGN PROFESSIONALS SPECIFYING LANDSCAPE FORMS, INC. PRODUCTS AND THEIR DIRECT CLIENTS. DRAWING IS NOT TO BE COPIED OR DISCLOSED TO OTHERS WITHOUT THE CONSENT OF LANDSCAPE FORMS, INC. © 2018 LANDSCAPE FORMS, INC. ALL RIGHTS RESERVED.

Drawing: CP362-16
Dimensions are in inches [mm]
U.S. Patent Nos.: D472,357; D481,507; D489,502



RETURN TO TOC

OLD TOWN FAIRFAX HISTORIC OVERLAY DISTRICT STREETScape STANDARDS

Streetscape Elements

BENCH

Description

Benches to match those located in Old Town Square

Style

- Slatted seat back and seat
- End armrests, optional center armrest,
- Plaque can be included

Size

- Six foot length

Materials and Color

- Powder-coated metal
- Black

Location and Setbacks

- 36" minimum setback from face of curb
- Minimum 1 bench per 350 linear feet (LF)/2 per block where space permits
- Bench face to be determined dependent upon site conditions

Requirements

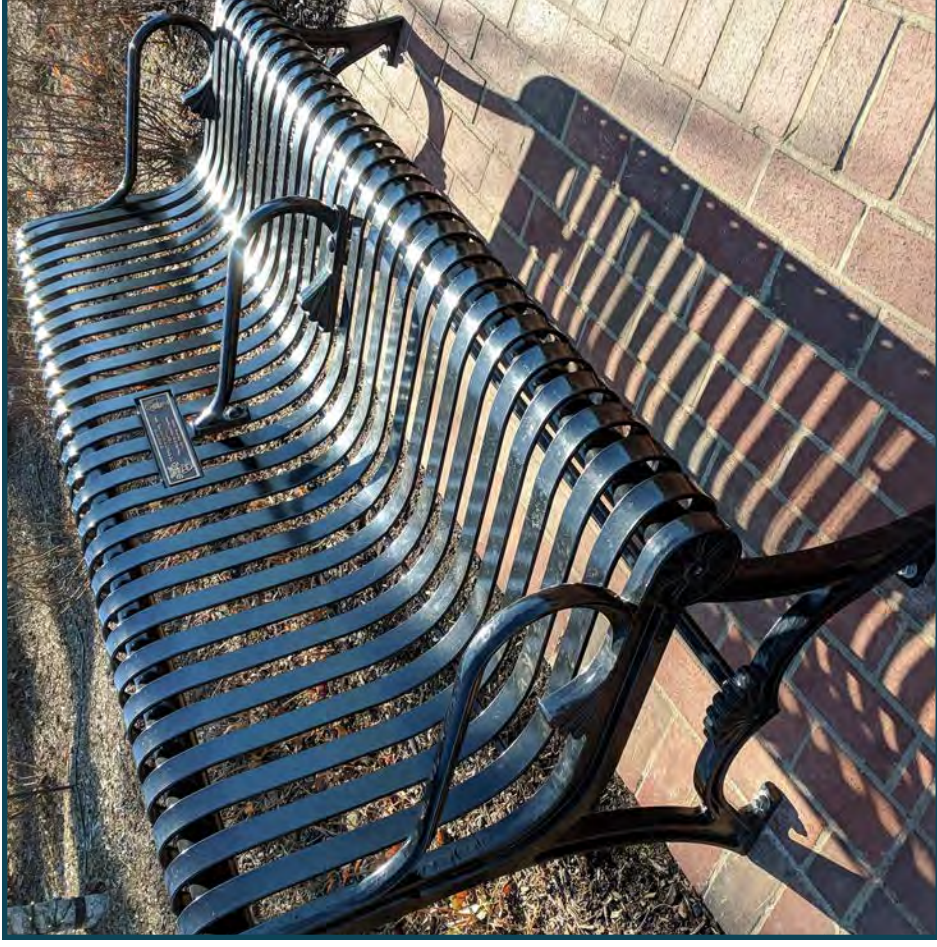
- DuMor Site Furnishings, Bench 58 or equal
- Anchor with pin in footer located beneath paving surface

Sources

DuMor Site Furnishings
Bench 58, with optional mid-arm
P.O. Box 142
Mifflintown, PA 17059
www.dumor.com

Landscape Forms, Inc.
Scarborough Bench
7800 E. Michigan Ave.
Kalamazoo, MI 49048
www.landscapeforms.com

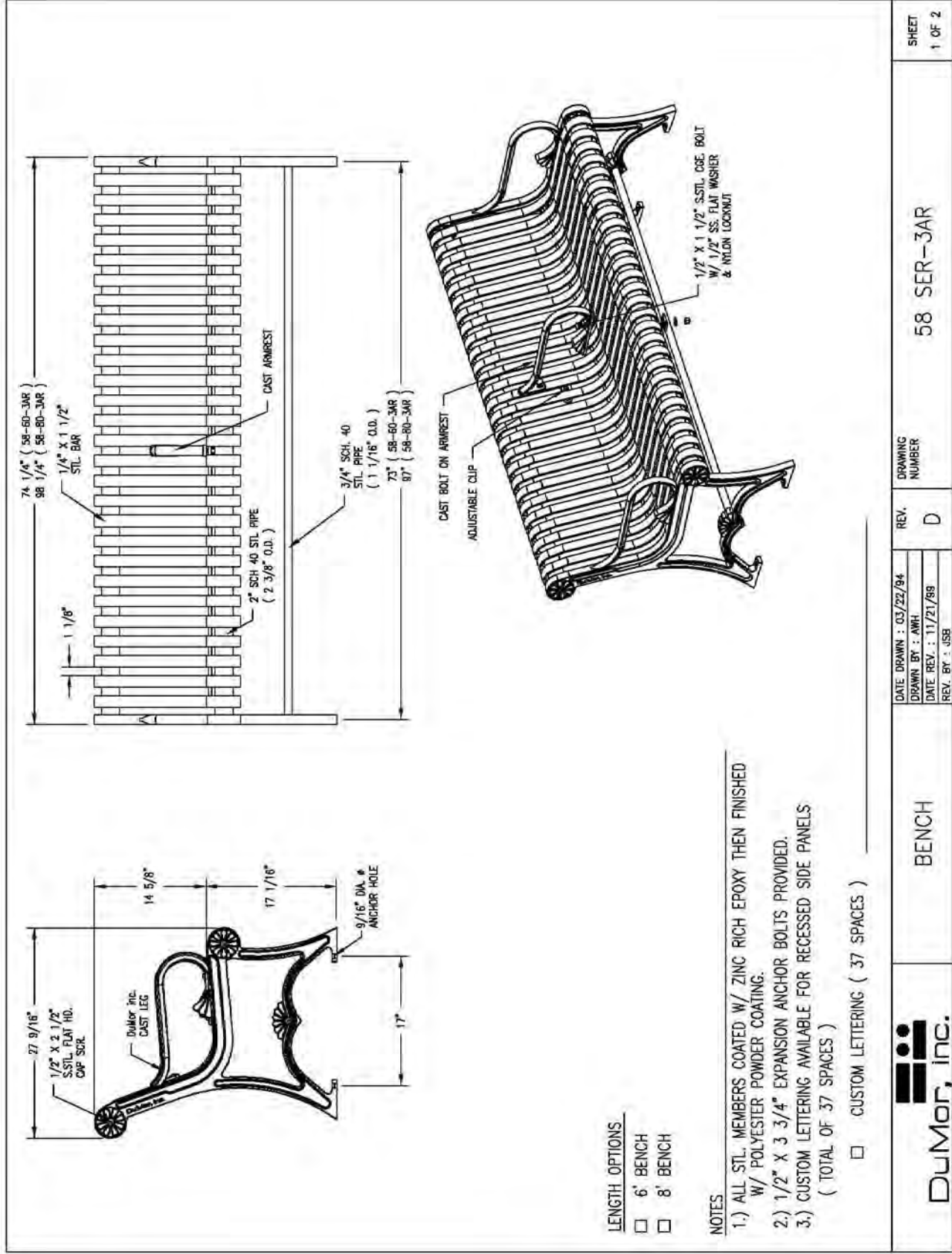
Keystone Ridge Designs, Inc.
Schenley Bench
670 Mercer Road
Butler, PA 16001
www.keystoneridgedesigns.com



City of Fairfax bench in Old Town Square

6

Streetscape Elements



LENGTH OPTIONS

- 6' BENCH
- 8' BENCH

NOTES

- 1.) ALL STL. MEMBERS COATED W/ ZINC RICH EPOXY THEN FINISHED W/ POLYESTER POWDER COATING.
- 2.) 1/2" X 3 3/4" EXPANSION ANCHOR BOLTS PROVIDED.
- 3.) CUSTOM LETTERING AVAILABLE FOR RECESSED SIDE PANELS (TOTAL OF 37 SPACES)

CUSTOM LETTERING (37 SPACES)



DuMor, Inc.

BENCH

DATE DRAWN : 03/22/94
 DRAWN BY : AMH
 DATE REV. : 11/21/89
 REV. BY : USB

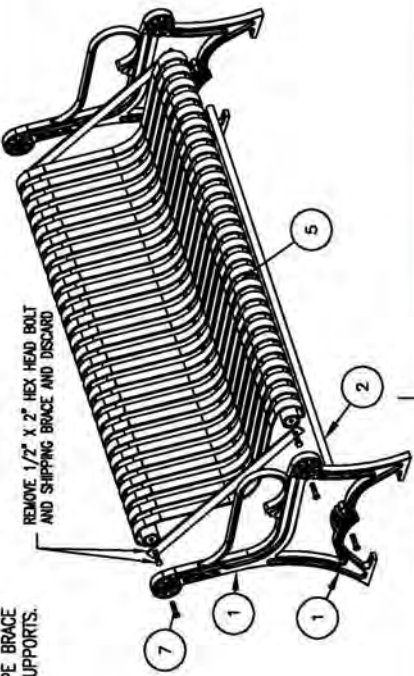


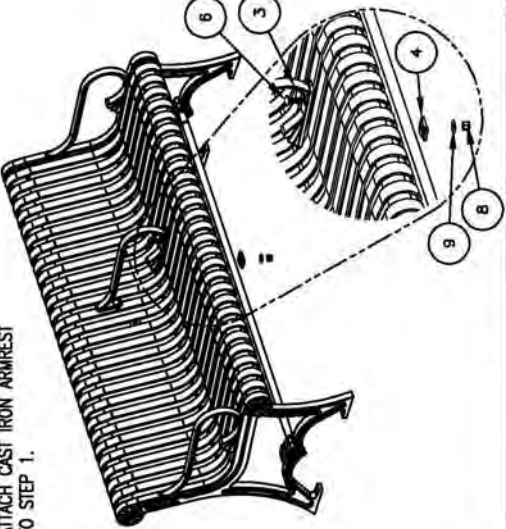

REV. D

DRAWING NUMBER

58 SER-3AR

SHEET 1 OF 2

Streetscape Elements

<p>1 ATTACH STL. SEAT & PIPE BRACE TO CAST IRON BENCH SUPPORTS.</p> 	<p>PARTS LIST</p> <table border="1"> <thead> <tr> <th>ITEM</th> <th>QTY</th> <th>PART NO</th> <th>DESCRIPTION</th> </tr> </thead> <tbody> <tr> <td>1</td> <td>2</td> <td>0-57-00-02</td> <td>CAST IRON BENCH SUPPORT</td> </tr> <tr> <td>2</td> <td>1</td> <td>0-57-60-04</td> <td>71 3/4" PIPE BRACE</td> </tr> <tr> <td>3</td> <td>1</td> <td>0-58-00AR-03</td> <td>CAST IRON BOLT ON ARMREST</td> </tr> <tr> <td>4</td> <td>2</td> <td>0-58-00AR-04</td> <td>ARMREST BOLT CLIP MACHINED</td> </tr> <tr> <td>5</td> <td>1</td> <td>0-58-60-01</td> <td>6" STL SEAT</td> </tr> <tr> <td>6</td> <td>2</td> <td>1-11-042</td> <td>1/2" X 1 1/2" SS COE BOLT</td> </tr> <tr> <td>7</td> <td>8</td> <td>1-12-065</td> <td>1/2" X 2 1/2" FLT SKT HD CAP SCR</td> </tr> <tr> <td>8</td> <td>2</td> <td>1-20-015</td> <td>1/2" SS NYLON LOCKNUT</td> </tr> <tr> <td>9</td> <td>2</td> <td>1-22-015</td> <td>1/2" SS FLAT WASHER</td> </tr> </tbody> </table> <p>KITS PROVIDED</p> <table border="1"> <thead> <tr> <th>ITEM</th> <th>QTY</th> <th>PART NO</th> <th>DESCRIPTION</th> </tr> </thead> <tbody> <tr> <td>10</td> <td>1</td> <td>K-ANCD860-4</td> <td>1/2" X 3 3/4" SS ANCHOR KIT (4PC)</td> </tr> <tr> <td>11</td> <td>1</td> <td>K-CO0824-2L</td> <td>1/2" COE BOLT HARDWARE KIT (2PC)</td> </tr> <tr> <td>12</td> <td>1</td> <td>K-FD0840-6</td> <td>1/2" CAP HARDWARE KIT (6PC)</td> </tr> </tbody> </table>	ITEM	QTY	PART NO	DESCRIPTION	1	2	0-57-00-02	CAST IRON BENCH SUPPORT	2	1	0-57-60-04	71 3/4" PIPE BRACE	3	1	0-58-00AR-03	CAST IRON BOLT ON ARMREST	4	2	0-58-00AR-04	ARMREST BOLT CLIP MACHINED	5	1	0-58-60-01	6" STL SEAT	6	2	1-11-042	1/2" X 1 1/2" SS COE BOLT	7	8	1-12-065	1/2" X 2 1/2" FLT SKT HD CAP SCR	8	2	1-20-015	1/2" SS NYLON LOCKNUT	9	2	1-22-015	1/2" SS FLAT WASHER	ITEM	QTY	PART NO	DESCRIPTION	10	1	K-ANCD860-4	1/2" X 3 3/4" SS ANCHOR KIT (4PC)	11	1	K-CO0824-2L	1/2" COE BOLT HARDWARE KIT (2PC)	12	1	K-FD0840-6	1/2" CAP HARDWARE KIT (6PC)
ITEM	QTY	PART NO	DESCRIPTION																																																						
1	2	0-57-00-02	CAST IRON BENCH SUPPORT																																																						
2	1	0-57-60-04	71 3/4" PIPE BRACE																																																						
3	1	0-58-00AR-03	CAST IRON BOLT ON ARMREST																																																						
4	2	0-58-00AR-04	ARMREST BOLT CLIP MACHINED																																																						
5	1	0-58-60-01	6" STL SEAT																																																						
6	2	1-11-042	1/2" X 1 1/2" SS COE BOLT																																																						
7	8	1-12-065	1/2" X 2 1/2" FLT SKT HD CAP SCR																																																						
8	2	1-20-015	1/2" SS NYLON LOCKNUT																																																						
9	2	1-22-015	1/2" SS FLAT WASHER																																																						
ITEM	QTY	PART NO	DESCRIPTION																																																						
10	1	K-ANCD860-4	1/2" X 3 3/4" SS ANCHOR KIT (4PC)																																																						
11	1	K-CO0824-2L	1/2" COE BOLT HARDWARE KIT (2PC)																																																						
12	1	K-FD0840-6	1/2" CAP HARDWARE KIT (6PC)																																																						
<p>1A</p>  <p>PLACE SEAT ASSEMBLY ON WORK SURFACE ALLOWING ACCESS TO ENDS. PLACE RATCHET STRAP AROUND SEAT ASSEMBLY AS SHOWN ABOVE.</p>	<p>NOTES:</p> <ol style="list-style-type: none"> DURING ASSEMBLY PROCEDURE, DO NOT COMPLETELY TIGHTEN HARDWARE. THE ACTUAL PARTS WILL NOT BE NUMBERED. NUMBERS ONLY APPLY TO DRAWING. UPON COMPLETION OF ASSEMBLY SQUARE ALL COMPONENTS THEN TIGHTEN ALL HARDWARE. MOUNT AND ANCHOR AS SPECIFIED. <p>TOOLS REQ'D</p> <p>3/4" WRENCH 5/16" ALLEN WRENCH 1/2" MASONRY DRILL BIT DRILL RATCHET STRAP (PROVIDED)</p>																																																								
<p>1B</p>  <p>TIGHTEN STRAP UNTIL SHIPPING BRACKET BECOMES LOOSE. THEN REMOVE AND DISCARD BOLTS & SHIPPING BRACKET.</p>	<p>2 ATTACH CAST IRON ARMREST TO STEP 1.</p> 																																																								
<p>1C</p>  <p>ATTACH CAST SUPPORT TO SEAT ASSEMBLY. IF HOLES IN CASTING DO NOT ALIGN WITH THE SEAT ASSEMBLY, ADJUST BY USING THE RATCHET STRAP.</p>	<p>ASSEMBLY INSTRUCTIONS</p> <p>DATE DRAWN : 11/21/99 DRAWN BY : JSB DATE REV. : 00/00/00 REV. BY : XXX</p> <p>REV. A</p>																																																								
<p>DuMor, inc.</p>		<p>DRIVING NUMBER</p> <p>58 SER-3AR</p> <p>SHEET 2 OF 2</p>																																																							

Streetscape Elements

BICYCLE RACK

Description

Simple bike rack, located parallel to curb or building face and suitable for supporting two bicycles

Style

- Simple hoop, minimum 2 bike capacity

Size

- Approximately 1'-8" high (above grade)
- Approximately 1'-2" wide

Installation

- In ground mount embedded in concrete base

Materials and Color

- Powder-coated metal
- Black or 304 grade stainless steel finish

Location and Setbacks

- Parallel to wall: 24" minimum setback from wall, 36" recommended
- Parallel to curb: 36" minimum setback from face of curb

Requirements

- Dero Hoop Bicycle Rack or equal; embedded mounting

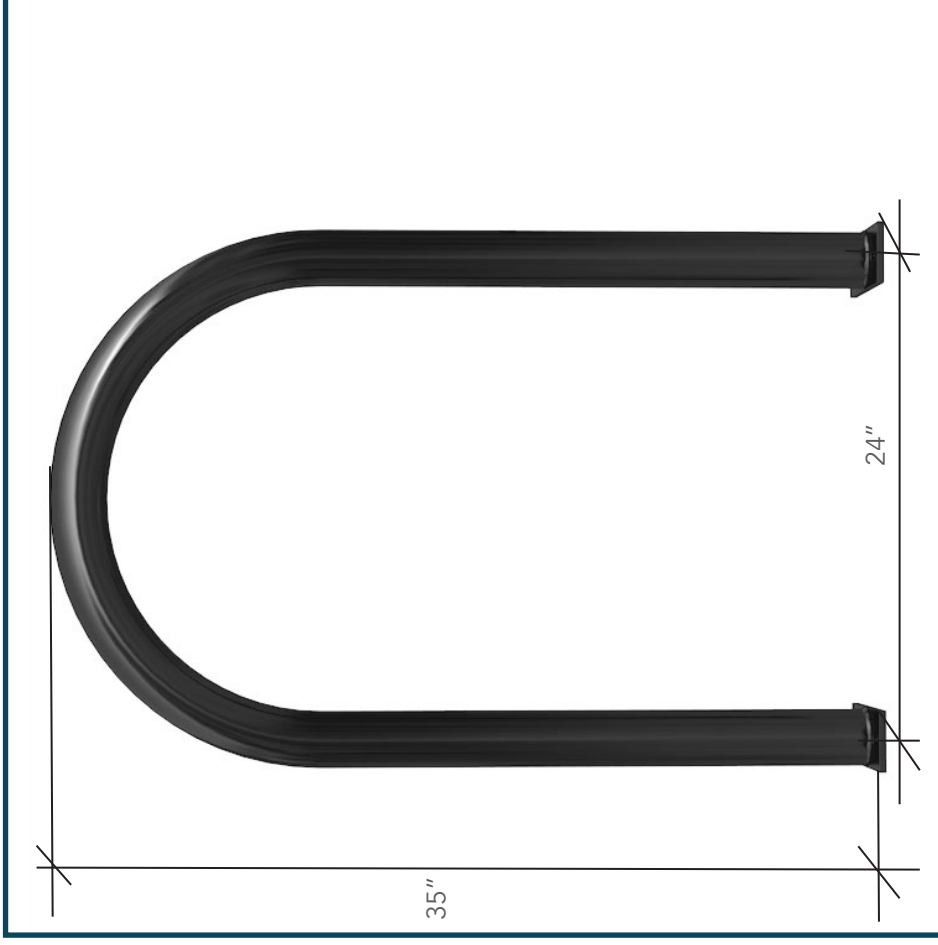
Sources

Dero
Hoop Bicycle Rack
52 Northern Stacks Drive
Minneapolis, MN 55421
www.dero.com

Landscape Forms, Inc.
Bolo Bicycle Rack, embedded mounting
431 Lawndale Ave.
Kalamazoo, MI 49048

The Park and Facilities
Catalog
www.parkcatalog.com

Belson Outdoors, LLC.
627 Amersale Dr.
Naperville, IL 60563



Streetscape Elements

GUIDE SPECIFICATIONS FOR THE DERO HOOP BIKE RACK

SECTION 02871 BIKE RACKS

These specifications were current at the time of publication but are subject to change at any time without notice. Please confirm the accuracy of these specifications with the manufacturer and/or distributor prior to installation.

PART 1 GENERAL

1.1 Summary

- A. This section includes specifications for the Hoop Bike Rack.

1. Bikes parked per unit: 2

1.2 Quality Assurance

- A. Installer Qualifications: An experienced installer who has completed installation of bicycle racks similar in material, design, and extent to that indicated for this project and whose work has resulted in construction with a record of successful in-service performance.
- B. Manufacturer Qualifications: A firm experienced in manufacturing bicycle racks similar to those required for this project and with a record of successful in-service performance.
- C. Source Limitations: Obtain each color, finish, shape and type of bicycle rack from a single source with resources to provide components of consistent quality in appearance and physical properties.
- D. Product Options: Drawings indicate size, shape and dimensional requirements of bicycle racks and are based on the specific system indicated.

1.3 Submittals

- A. Product Data: Include physical characteristics such as shape, dimensions, bicycle, material parking capacity and finish for each bicycle rack.
- B. Shop Drawings: Show installation details for each bicycle rack.
- C. Samples for Verification: Submit finish samples for review and verification.
- D. Maintenance Data: For each bicycle rack.
 1. Include recommended methods for repairing damage to the finish.

1.4 Delivery, Storage and Handling

- A. Upon delivery, before signing for shipment, inspect for any damages and notate on the B.O.L.
- B. Store bicycle racks in original undamaged packages and containers until ready for installation. Handle bicycle racks with sufficient care to prevent any scratches or damage to the finish.

PART 2 PRODUCTS

2.1 Acceptable Manufacturers

- A. Provide bicycle racks manufactured by DERO BIKE RACK CO., 42 Northern Stacks Drive, Suite 100, Minneapolis, MN 55421, 1-888-337-6729. Fax: 612-331-2731
Website: www.dero.com

2.2 Materials

- A. 1.5" schedule 40 uncoated pipe (1.90" OD)
- B. Installation Methods: In-ground mount is embedded into concrete base. Flange mount has two 2.5" x 6" x .25" feet - 4 anchors. In-ground mount, foot mount, and rail mount models are available.
- C. Rail Racks: Hoops are bolted to two parallel rails. Hoops can be left free standing or anchored to the ground. See Rail Racks section below. Rail material is AISI C3 x 4.1 steel channel.

2.3 Finishes

- A. A hot-dipped galvanized finish performed after fabrication is standard.
- B. Over 250 high quality TGIC powder-coated colors are available from Dero Bike Rack Co.
 1. A TGIC powder coat finish is available.
 2. For powder coated/ painted racks, the following specifications are required: Part is prepared for painting with hard sandblasting. An epoxy primer is electrostatically applied. A final TGIC, UV resistant polyester powder coat is applied. Final coating mil thickness shall be no less than 6 mils.
- C. A 304 grade stainless steel finish is also available. Either a satin #4 finish or high luster electropolish finish. Both finish options include the Spectra Shield finish for maximum corrosion protection.
- D. Six durable thermoplastic colors are available.
- E. A rubbery PVC dip is available in many colors. Black is standard.

2.4 Hoop Bike Rack

- A. Setbacks

1. Wall Setback: For Hoops set parallel to the wall, a minimum of 24" should be left between the wall and the rack. 36" is the recommended setback. For Hoops installed perpendicular to the wall, a 28" setback is the minimum distance. 36" is recommended.
2. Distance Between Racks: 24" is the minimum distance between racks. 36" is recommended.
3. Street Setback: 24" is the minimum distance between the street and the rack. 36" is recommended.
4. The foot-mounted Hoop Rack has a 2.5" x 6" x .25" foot which is installed onto a concrete base with 4 masonry anchors. The foot-mounted Hoop Rack is generally less expensive to install and easier to remove than the in-ground mount model, while still maintaining the same degree of security.

- C. Rail Racks

Streetscape Elements

1. Rail-mounted Hoops are standard foot-mounted Hoop Racks attached with bolts to a rail in the configurations from 3 to 7 Hoops. Rail racks provide more flexibility than mounted racks, but still provide the same degree of security.
2. Rail-mounted Hoops can be left either free-standing or can be anchored to the ground using several anchors. This portability allows for easy snow-removal or sweeping. It also means installation is much less expensive than imbedded bike racks.
3. The Advantages to rail-mounted racks are:
 1. Easier and inexpensive installation
 2. Can be left freestanding or anchored to the ground
 3. Can be easily removed
4. Rail Racks are commonly used where snow removal/sweeping is an issue, or when no suitable base material is available.

PART 3 EXECUTION

3.1 Installation

- A. Installation Method
 1. In ground mount
 2. Surface mount
 3. Rail-mounted (free standing)
 4. It is the responsibility of the installer to ensure that all base materials into which the rack will be installed can support the rack and will not be damaged by any required installation procedures.

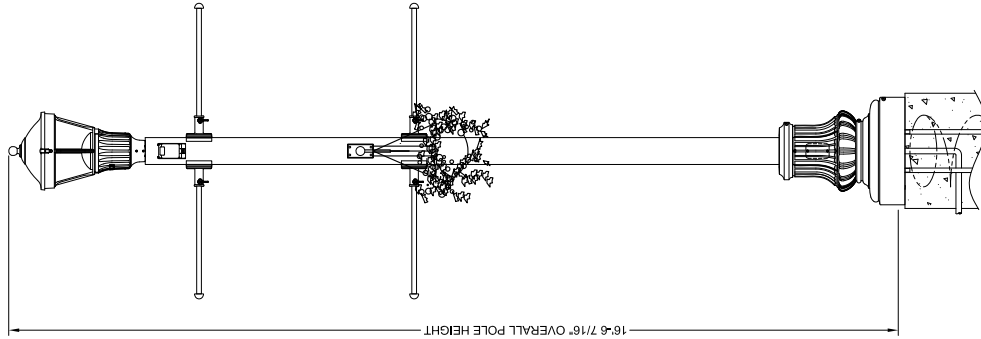
3.2 Ordering Information

- A. When ordering or specifying this rack, make sure the product type, finish and fastener type (if applicable) are included. Contact your Dero representative for a current price list or to place an order.
- B. Included in the price is either a hot-dipped galvanized finish, a TGIC powder coat finish, or a stainless steel finish. The foot-mounted and Rail Rack Hoops include 4 wedge anchors or concrete spikes.

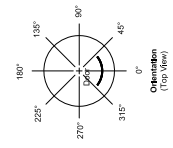
3.3 Freight

- A. Call 1-888-337-6729 for freight quotes.

Streetscape Elements



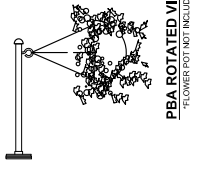
CUSTOMER NOTES:
 1. CUSTOMERS MUST VERIFY ACCESSORY HEIGHTS & ORIENTATIONS BELOW DURING APPROVAL AND MUST BE PROVIDED PRIOR TO PRODUCTION. MAY BE ROTATED IN DRAWING VIEW FOR CLIENT'S SUBMITTAL TO ACCOMPANY PO.
 2. APPROVED AND COMPLETED SUBMITTAL TO ACCOMPANY PO.



Accessory Mounting Detail

BANNER ARMS	Orientation	Height
BANNER ARMS	90°	9'-0" & 14'-0"
BANNER ARMS	270°	9'-0" & 14'-0"
PLANTER ARM	0°	10'-0"
RECEPTACLE	0°	13'-6"

NOTE: Confirm banner arm mounting height with City of Fairfax prior to production; current banner length is 48".



Customer #:
 Pkts: 1400505854-373-GFL-PROVS-WA24CSB-BK RFD296489
 Anchor Bolts: LEX1*ABSET RFD296489
 Banner Arms: (M)A24B0H-BK
 Planter Arm: PBA18B0H4BK-EB RFD296489
 Plants: P1UEZ. (Please see sales rep for standard luminaire cut sheet.)

Customer Signature & Date:

TITLE: S ASSEMBLY	QTY: 27
MODEL NO.: 1400505854H (A14336)	OWN BY: HJT/MAB
MATERIAL: ALUMINUM ALLOY	CHK'D BY:
FINISH: POWDER PAINT- HOLOPHANE BLACK LAVA	APPR BY:
PROJECT: CITY OF FAIRFAX - LARDNER KLEIN	DATE: 12/11/18
DRG NO.: RFD296489, DR16154	DWG NO.:
SHR TO: RFD296489	WAG: SQ011140
P.O. NO.: 2400-18-10030-4	MAS:
REP.: MEGAN FALCONE	PAGE:
REV DATE	REVISION DESCRIPTION
	BY 3 / 3

****CONFIDENTIAL****
 The information contained in this drawing is privileged and confidential. Its disclosure or dissemination of this drawing may be subject to legal restriction or sanction.

Maximum effective projected area - 38 lbs
 Maximum effective projected area - 1.38 sq. ft.

UTILITY POSTOP LED® Series Luminaire

DECORATIVE OUTDOOR

HOLOPHANE
 LEARN IN LIGHTING SOLUTIONS
 3825 COLUMBUS RD., GAITHERSBURG, MD 20878
 800.442.2800

ORDERING INFORMATION:

HOUSING STYLE: P10 = LED PERFORMANCE PACKAGE POSTOP LED POST TOP

COLOR TEMPERATURE: 27K = 2700 K CCT, 30K = 3000 K CCT, 40K = 4000 K CCT, 50K = 5000 K CCT

VOLTAGE: AS = AUTODIMMING (120-277V 50/60 HZ), PP = PRIME PAINT (247-480) 50/60 HZ

OPTICS: A3 = TYPE 3 ACRYLIC REFRACTOR, GL3 = TYPE 3 GLASS REFRACTOR, P15 = TYPE 5 POLYCARBONATE REFRACTOR

LED PERFORMANCE PACKAGE (SEE PERFORMANCE DATA TABLE FOR DETAILS - PAGE 2):
 P10 = LED PERFORMANCE PACKAGE
 P20 = LED PERFORMANCE PACKAGE
 P30 = LED PERFORMANCE PACKAGE
 P40 = LED PERFORMANCE PACKAGE
 P50 = LED PERFORMANCE PACKAGE

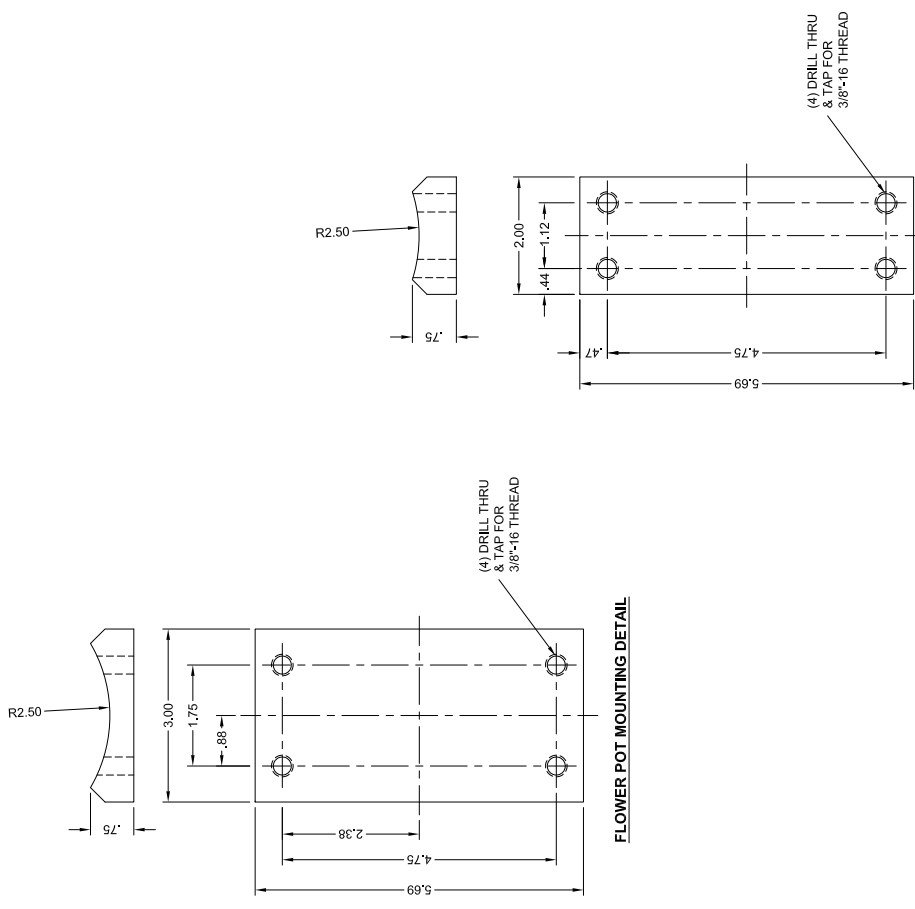
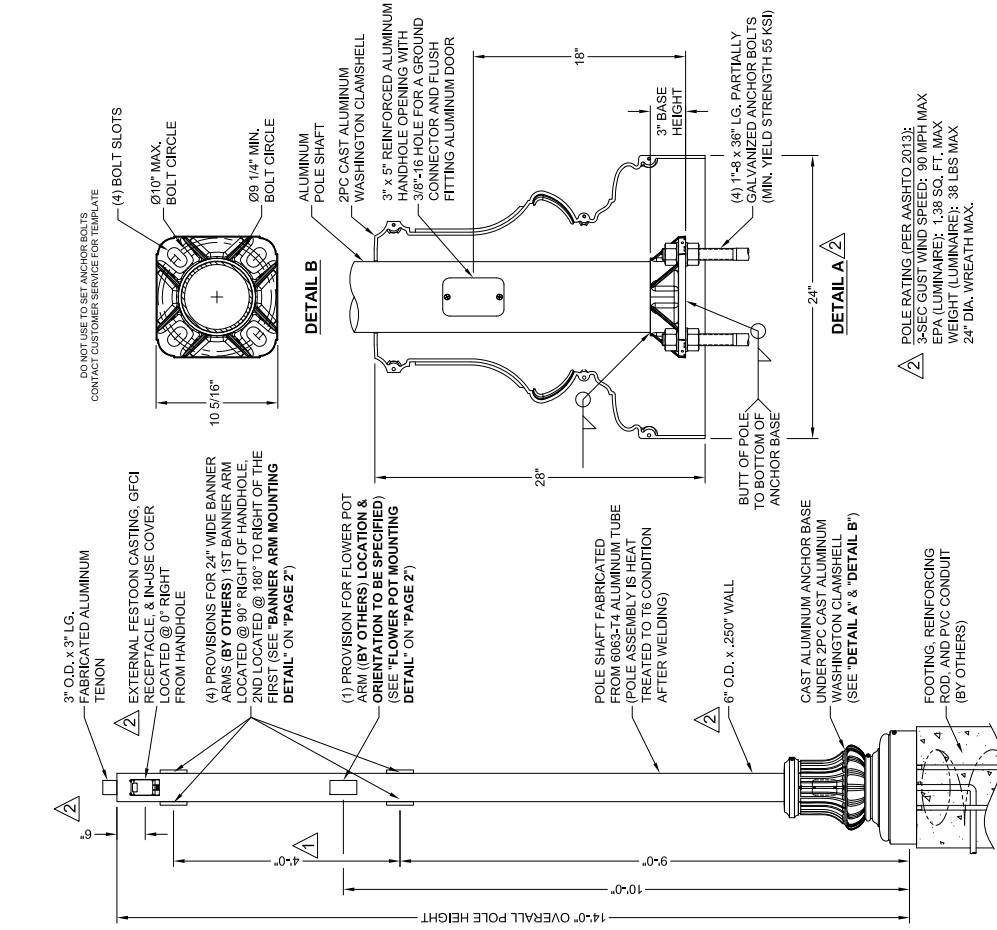
ACCESSORIES:
HOUSE SIDE SHIELD FIELD INSTALLED OPTIONS:
 PHSS12 = HOUSE SIDE SHIELD SOLID 120 DEGREE
 PHSS18 = HOUSE SIDE SHIELD SOLID 180 DEGREE
SURGE REPLACEMENT FIELD INSTALLED OPTIONS:
 SPDPLUG-IN-AH = REPLACEMENT FOR 347-480V
 SPDPLUG-IN-AS = REPLACEMENT FOR 347-480V
 SPDPLUG-IN-20KV = REPLACEMENT FOR 347-480V 20KV/100VA

OPTIONS:
CONTROL OPTIONS:
 DE = ROAM HARVARE AND DECO NODE
 FF03 = FACTORY PROGRAMMED DRIVER
 P3 = NEMA TWISTLOCK RECEPTACLE INTERNALLY MOUNTED - 3 PIN
 P7 = NEMA TWISTLOCK RECEPTACLE INTERNALLY MOUNTED - 7 PIN
 P4 = DTL TWISTLOCK PHOTOCONTROL
 P48 = DTL TWISTLOCK PHOTOCONTROL 480V
 PCLL = DTL LONG LIFE TWISTLOCK PHOTOCONTROL FOR SOLID STATE 'AS' & 'AH'
 PSC = SHORTING CAP
 PND = D10V PART NIGHT DIMMING
 PNE = ROAM NODE (120-277V) EXTERNALLY MOUNTED WITH 7 PIN
 PNR = ROAM NODE (120-277V) EXTERNALLY MOUNTED WITH 7 PIN
 PMS4 = ROAM NODE 480V EXTERNALLY MOUNTED WITH 7 PIN
NEMA LABEL OPTION:
 NL22 = 2" x 2" ANSI WATTAGE LABEL, 20W
 NL24 = 2" x 2" ANSI WATTAGE LABEL, 24W
SURGE PROTECTION OPTION:
 L20 = 20 FEET OF PREWIRED LEADS
 L26 = 26 FEET OF PREWIRED LEADS
 L30 = 30 FEET OF PREWIRED LEADS
 L36 = 36 FEET OF PREWIRED LEADS
 L40 = 40 FEET OF PREWIRED LEADS

COMPATIBLE OPTIONS, REFER TO THE OPTION MATRIX ON PAGE 3 OF 4



Streetscape Elements



TITLE: S ANCHOR BASE POLE		QTY: 27	DATE: 12/11/18
MODEL NO.: 1400505854H (A14338)		OWN BY: HJT/MAB	DWG NO.: TSG011140
MATERIAL: ALUMINUM ALLOY		CHKD BY:	PTG:
FINISH: POWDER PAINT- HOLOPHANE BLACK LAVA		APPR BY:	REV: 1/3
PROJECT: CITY OF FAIRFAX- LARDNER KLEIN		DATE: 12/11/18	REVISION DESCRIPTION
DRG NO.: RFD250446, DR 16154		REV:	
SHR NO.: 2400-18-10030-4			
P.O. NO.: 2400-18-10030-1			
REP.: MEGAN FALCONE			

TITLE: S MOUNTING PLATE DETAILS		QTY: 27	DATE: 12/11/18
MODEL NO.: (A14338)		OWN BY: HJT/MAB	DWG NO.: TSG011140
MATERIAL: ALUMINUM ALLOY		CHKD BY:	PTG:
FINISH: POWDER PAINT- HOLOPHANE BLACK LAVA		APPR BY:	REV: 2/3
PROJECT: CITY OF FAIRFAX- LARDNER KLEIN		DATE: 12/11/18	REVISION DESCRIPTION
DRG NO.: RFD250446, DR17564		REV:	
SHR NO.: 2400-18-10030-1			
P.O. NO.: 2400-18-10030-1			
REP.: MEGAN FALCONE			



****CONFIDENTIAL****
The information contained in this drawing is privileged and confidential. Its disclosure or dissemination of this drawing may be subject to legal restriction or sanction.



****CONFIDENTIAL****
The information contained in this drawing is privileged and confidential. Its disclosure or dissemination of this drawing may be subject to legal restriction or sanction.

Catalog Number	
Notes	Type

PTE3

Taft Postop LED



SPECIFICATIONS

General Description

The decorative post top lantern is ideal for lighting city streets, residential areas, campuses, parking lots, and walkways. The architectural luminaire consists of a luminaire housing, a prismatic optic, and a decorative cover.

Optical Assembly

The optical assembly consists of a prismatic glass or acrylic refractor to precisely distribute light with excellent visual comfort and reduced glare. Configurable with CCT options of 2700K, 3000K, and 4000K. CRI is 70 minimum. Available in symmetric and asymmetric distributions.

Electrical Assembly

The programmable LED driver includes 0-10V dimming with optional DALI dimming. Driver is available in 120-277V, 347-480V, and 277V-480V options (50/60 Hz). Driver life is rated to at least 100,000 hours. The 277V-480V (XVOLT) option includes enhanced power quality protection for maximum robustness against loss of neutral, voltage transients, harmonic disturbances, and other real-world power quality disturbances.

Finish

The luminaire housing is low copper cast aluminum and finished with corrosion resistant super durable powder coat paint for maximum durability. Rigorous multi-stage pre-treating and painting process yields a finish that achieves a scribe creepage rating of 8 (per ASTM D1654) after over 5,000 hours exposure to salt fog chamber (operated per ASTM B117)

Mounting

Luminaire includes an integral slipfitter that accepts a 3" tall by $\varnothing 2\text{-}7/8"$ - $3\text{-}1/8"$ O.D. tenon. Secured to the tenon by 6 set screws

Control Options

Optional controls include:

- Industry standard 3-pin and 7-pin NEMA photocontrols, mounted externally in place of the finial
- - "nLight AIR enabled" for connection to nLight AIR wireless control networks via internally mounted antenna (NLTAIR2)
- DALI compatible drivers. Contact factory for details.
- Customization of lumen packages is possible. Consult factory for details.

Listing

The luminaire is CSA certified to US and Canadian standards. 20kV/10kA extreme surge protection per ANSI/IEEE C136.2. Suitable for operation in ambient temperatures from -40°C to 40°C. Optical chamber is sealed to IP66. DesignLights Consortium® (DLC) Premium qualified product. Not all versions of this product may be DLC Premium qualified. Please check the DLC Qualified Products List at www.designlights.org/QPL to confirm which versions are qualified.

Buy American Act

This product is assembled in the USA and meets the Buy America(n) government procurement requirements under FAR, DFARS and DOT regulations. Please refer to www.acuitybrands.com/resources/buy-american for additional information.

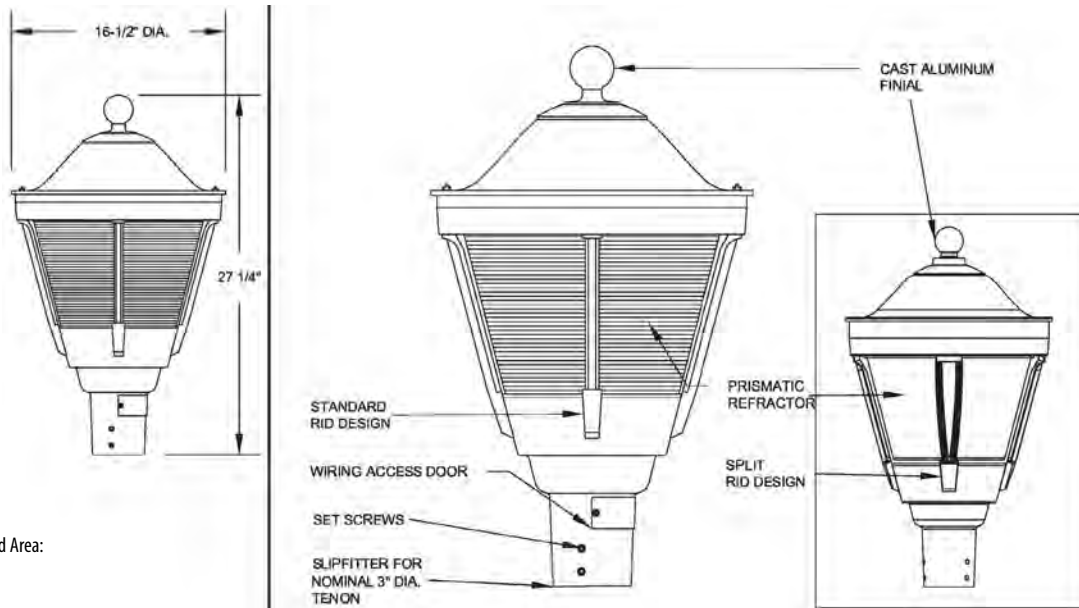
Warranty

5-year limited warranty. This is the only warranty provided and no other statements in this specification sheet create any warranty of any kind. All other express and implied warranties are disclaimed. Complete warranty terms located at: www.acuitybrands.com/support/warranty/terms-and-conditions

Note: Actual performance may differ as a result of end-user environment and application. All values are design or typical values, measured under laboratory conditions at 25 °C. Specifications subject to change without notice.



DIMENSIONAL DATA



Maximum Weight - 32 lbs
Maximum Effective Projected Area: 1.3 sq. ft.

ORDERING INFORMATION

EXAMPLE: PTE3 P30 30K MVOLT GL3 BK BL SR

Housing Style	LED Performance Package	Color Temperature	Voltage	Optics	Color	Finial	Ribs
PTE3 Taft LED Post Top	P10 30W nominal	27K 2700K CCT	MVOLT 120-277V	Acrylic Refractor	BK Black	BL Ball	SR Solid rib
	P20 40W nominal	30K 3000K CCT	HVOLT 347-480V	AL3 Acrylic refractor type 3	BZ Bronze	NF None	SRS Split rib
	P30 50W nominal	40K 4000K CCT	XVOLT 277-480V with enhanced power quality protection	AL5 Acrylic refractor type 5	CMC Custom Match Color		
	P40 60W nominal			Glass Refractor	GH Graphite		
	P50 70W nominal			GL3 Glass refractor type 3	GN Green		
	P60 80W nominal			GL5 Glass refractor type 5	GR Grey		
	P70 90W nominal				RALxxxxSDCR RAL Super Durable Corrosion Resistant, 80% Gloss Paint, replace xxxx with RAL number.		
	P80 100W nominal				WH White		

Options		
Control Options:	NEMA Label Options:	Prewire Lead Options:
NLTAIR2 nLight AIR rIO 2.0 antenna	NL1x1 1"x1" ANSI wattage label	L1H 1.5' of prewire leads
PR3E 3-pin NEMA twistlock receptacle, replaces finial	NL2x2 2"x2" ANSI wattage label	L03 3' of prewire leads
PR7E 7-pin NEMA twistlock receptacle, replaces finial		L10 10' of prewire leads
P34 Long Life DTL Twistlock Photocontrol for Solid State, 347V		L20 20' of prewire leads
P48 Long Life DTL Twistlock Photocontrol for Solid State, 480V		L25 25' of prewire leads
PCLL Long Life DTL Twistlock Photocontrol for Solid State, MVOLT		L30 30' of prewire leads
SH Shorting cap		
DALI DALI driver (RFD Required)		

Accessories: Order as separate catalog number.		
House Side Shield Field Installed Options:	Decorative field installed options	
PHSS90 House side shield solid 90 degree	RPCP** Decorative Cupola (** =select color)	
PHSS120 House side shield solid 120 degree	RPFG** Decorative filligree (** = select color)	
PHSS180 House side shield solid 180 degree	RPSC** Decorative cast scroll (** = select color)	
Surge Replacement Field Installed Options:	Photocontrol kit field installed options	
SPDPLUGIN-MVOLT-20KV Replacement for 120-277V 20KV/ 10KA	RPB12** Photocontrol kit for 120V (**=select color)	
SPDPLUGIN-HVOLT-20KV Replacement for 347-480V 20KV/ 10KA	RPB27** Photocontrol kit for 208-277V (** = select color)	
	RPB347** Photocontrol kit for 347V (**=select color)	

MARK APPROPRIATE BOX FOR FINIAL AND RIB OPTIONS

FINIALS

No Finial (NF)

Ball (BL)



RIB OPTIONS

Standard Ribs (SR)

Split Ribs (SRS)



PERFORMANCE DATA

Performance Package	System Watts	Optical Distribution	27K (2700K, 70 CRI)		30K (3000K, 70 CRI)		40K (4000K, 70 CRI)	
			Lumens	LPW	Lumens	LPW	Lumens	LPW
P10	31	GL3	3,526	113	3,806	122	3,876	125
		GL5	3,437	110	3,709	119	3,777	121
		AL3	3,542	114	3,823	123	3,893	125
		AL5	3,545	114	3,826	123	3,896	125
P20	40	GL3	4,617	114	4,983	123	5,075	125
		GL5	4,500	111	4,856	120	4,946	122
		AL3	4,638	115	5,006	124	5,098	126
		AL5	4,641	115	5,009	124	5,101	126
P30	51	GL3	5,692	112	6,144	121	6,257	124
		GL5	5,548	110	5,987	118	6,097	120
		AL3	5,718	113	6,171	122	6,285	124
		AL5	5,722	113	6,176	122	6,289	124
P40	59	GL3	6,869	116	7,413	125	7,550	127
		GL5	6,694	113	7,225	122	7,358	124
		AL3	6,900	116	7,447	126	7,584	128
		AL5	6,905	117	7,452	126	7,589	128
P50	70	GL3	7,873	113	8,497	122	8,653	124
		GL5	7,673	110	8,281	119	8,433	121
		AL3	7,909	113	8,535	122	8,692	125
		AL5	7,914	114	8,542	122	8,699	125
P60	80	GL3	8,811	111	9,509	119	9,684	122
		GL5	8,587	108	9,267	116	9,438	119
		AL3	8,851	111	9,552	120	9,728	122
		AL5	8,857	111	9,559	120	9,735	122
P70	90	GL3	9,730	108	10,501	117	10,694	119
		GL5	9,482	105	10,234	114	10,422	116
		AL3	9,774	108	10,549	117	10,743	119
		AL5	9,781	109	10,556	117	10,750	119
P80	100	GL3	10,504	105	11,337	113	11,545	115
		GL5	10,237	102	11,048	110	11,251	112
		AL3	10,551	105	11,388	114	11,597	116
		AL5	10,559	105	11,396	114	11,605	116

OPTIONS MATRIX

		Voltage			Optic				Finial		Control Options				Photocontrol				
		MVOLT	HVOLT	XVOLT	GL3	GL5	AL3	AL5	BL	NF	DALI	NLTAIR2	PR3E	PR7E	PCLL	P34	P48	SH	
Performance Package	P10	Y	Y	N	Y	Y	Y	Y	Y	Y	RFD	Y	Y	Y	Y	Y	Y	Y	
	P20	Y	Y	N	Y	Y	Y	Y	Y	Y	RFD	Y	Y	Y	Y	Y	Y	Y	
	P30	Y	Y	Y	Y	Y	Y	Y	Y	Y	RFD	Y	Y	Y	Y	Y	Y	Y	
	P40	Y	Y	Y	Y	Y	Y	Y	Y	Y	RFD	Y	Y	Y	Y	Y	Y	Y	
	P50	Y	Y	Y	Y	Y	Y	Y	Y	Y	RFD	Y	Y	Y	Y	Y	Y	Y	
	P60	Y	Y	Y	Y	Y	Y	Y	Y	Y	RFD	Y	Y	Y	Y	Y	Y	Y	
	P70	Y	Y	Y	Y	Y	Y	Y	Y	Y	RFD	Y	Y	Y	Y	Y	Y	Y	
	P80	Y	Y	Y	Y	Y	Y	N	N	Y	Y	RFD	Y	Y	Y	Y	Y	Y	
Voltage	MVOLT				Y	Y	Y	Y	Y	Y	RFD	Y	Y	Y	Y	N	N	Y	
	HVOLT				Y	Y	Y	Y	Y	Y	N	Y	Y	Y	N	Y	Y	Y	
	XVOLT				Y	Y	Y	Y	Y	Y	N	N	Y	Y	Y	Y	Y	Y	
Optic	GL3	Y	Y	Y					Y	Y	RFD	Y	Y	Y	Y	Y	Y	Y	
	GL5	Y	Y	Y					Y	Y	RFD	Y	Y	Y	Y	Y	Y	Y	
	AL3	Y	Y	N					Y	Y	RFD	Y	Y	Y	Y	Y	Y	Y	
	AL5	Y	Y	N					Y	Y	RFD	Y	Y	Y	Y	Y	Y	Y	
Finial	BL	Y	Y	Y	Y	Y	Y	Y			RFD	Y	N	N	Y	Y	Y	Y	
	NF	Y	Y	Y	Y	Y	Y	Y			RFD	Y	Y	Y	Y	Y	Y	Y	
Controls	DALI	RFD	N	N	RFD	RFD	RFD	RFD	RFD	RFD				RFD	RFD	RFD	RFD	RFD	
	NLTAIR2	Y	Y	N	Y	Y	Y	Y	Y	Y				N	N	N	N	N	
	PR3E	Y	Y	Y	Y	Y	Y	Y	N	Y	RFD	N				Y	Y	Y	Y
	PR7E	Y	Y	Y	Y	Y	Y	Y	N	Y	RFD	N				Y	Y	Y	Y
Photocontrol	PCLL	Y	N	Y	Y	Y	Y	Y	N	Y	RFD	N	Y	Y					
	P34	N	Y	Y	Y	Y	Y	Y	N	Y	RFD	N	Y	Y					
	P48	N	Y	Y	Y	Y	Y	Y	N	Y	RFD	N	Y	Y					
	SH	Y	Y	Y	Y	Y	Y	Y	N	Y	RFD	N	Y	Y					

OPTIONS MATRIX Legend

Y = Option combination is available
 N = Option combination is not available
 RFD = Additional information required, consult factory

Lumen Ambient Temperature (LAT) Multipliers

Use these factors to determine relative lumen output for average ambient temperatures from 0-40°C (32-104°F).

Luminaire Ambient Temperature (LAT) Factor		
Temperature (°C)	Temperature (°F)	Lumen Multiplier
0°C	32°F	1.04
5°C	41°F	1.03
10°C	50°F	1.02
15°C	59°F	1.01
20°C	68°F	1.01
25°C	77°F	1.00
30°C	86°F	0.99
35°C	95°F	0.98
40°C	104°F	0.98

Projected LED Lumen Maintenance

Data references the extrapolated performance projections for the platforms noted in a 25°C ambient, based on 9,000 hours of LED testing (tested per IESNA LM-80-08 and projected per IESNA TM-21-11).

To calculate LLF, use the lumen maintenance factor that corresponds to the desired number of operating hours below. For other lumen maintenance values, contact factory.

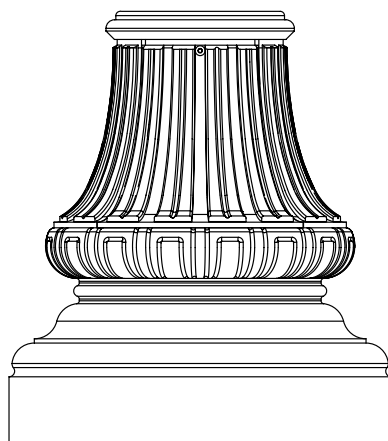
Performance Package	LED Lumen Maintenance						
	Initial	25,000 hours	36,000 hours	50,000 hours	60,000 hours	75,000 hours	100,000 hours
P10 thru P70	1.00	0.95	0.94	0.91	<i>0.90</i>	<i>0.88</i>	<i>0.84</i>
P80	1.00	0.94	0.91	0.89	<i>0.86</i>	<i>0.83</i>	<i>0.79</i>

The italicized data is extrapolated beyond the TM-21 standard.

Catalog Number	
Notes	Type

CLA

Columbia Aluminum Pole



17D

SPECIFICATIONS

General Description

The lighting post shall be all aluminum, one-piece construction, with a classic tapered and fluted base design.

Materials

- The base and fluted tapered cast shaft shall be heavy wall, cast aluminum produced from certified ASTM 356.1 ingot per ASTM B-179 or ASTM B26.
- The straight shafts shall be extruded from aluminum, ASTM 6061 alloy.
- The tapered shaft shall be extruded from aluminum, ASTM 6063 alloy, spun to a tapered shape.
- All hardware shall be temper resistant stainless steel.
- Anchor bolts to be completely hot dip galvanized.
- Utilize a polyester powder coat paint to ensure maximum durability.
- Rigorous multi-stage pre-treating and painting process yields a finish that achieves a scribe creepage rating of 8 (per ASTM D1654) after over 5,000 hours exposure to salt fog chamber (operated per ASTM B117) on standard and RAL finish options.
- RAL (RALxxxxSDCR) paint colors are Super Durable Corrosion Resistant, 80% gloss.

Construction

- The shaft shall be double welded to the base casting and shipped as one piece for maximum structural integrity.
- The shaft shall be welded inside the base casting at the top of the access door, and externally where the shaft exits the base.
- All welding shall be per ANSI/AWS.

Dimensions

- The post height shall range from 8' to 22' with a 17" diameter base.
- At the top of the post, an integral tenon with a transitional donut shall be provided for luminaire mounting.

Installation

- The post shall be provided with four, hot dip galvanized L-type anchor bolts.
- A door shall be provided in the base for anchorage and wiring access.
- A grounding screw shall be provided inside the base opposite the door.

Warranty

1-year limited warranty. This is the only warranty provided and no other statements in this specification sheet create any warranty of any kind. All other express and implied warranties are disclaimed. Complete warranty terms located at: www.acuitybrands.com/support/warranty/terms-and-conditions

IMPORTANT INSTALLATION NOTES:

- Do not erect poles without having fixtures installed.
- Factory-supplied templates must be used when setting anchor bolts. Acuity Brands Lighting will not accept claim for incorrect anchorage placement due to failure to use factory template.
- If poles are stored outside, all protective wrapping must be removed immediately upon delivery to prevent finish damage.
- Acuity Brands Lighting is not responsible for the foundation design.

Note: Actual performance may differ as a result of end-user environment and application.

Specifications subject to change without notice.

ORDERING INFORMATION

Example: CLA 16 SL5 17D C03 BK GRD

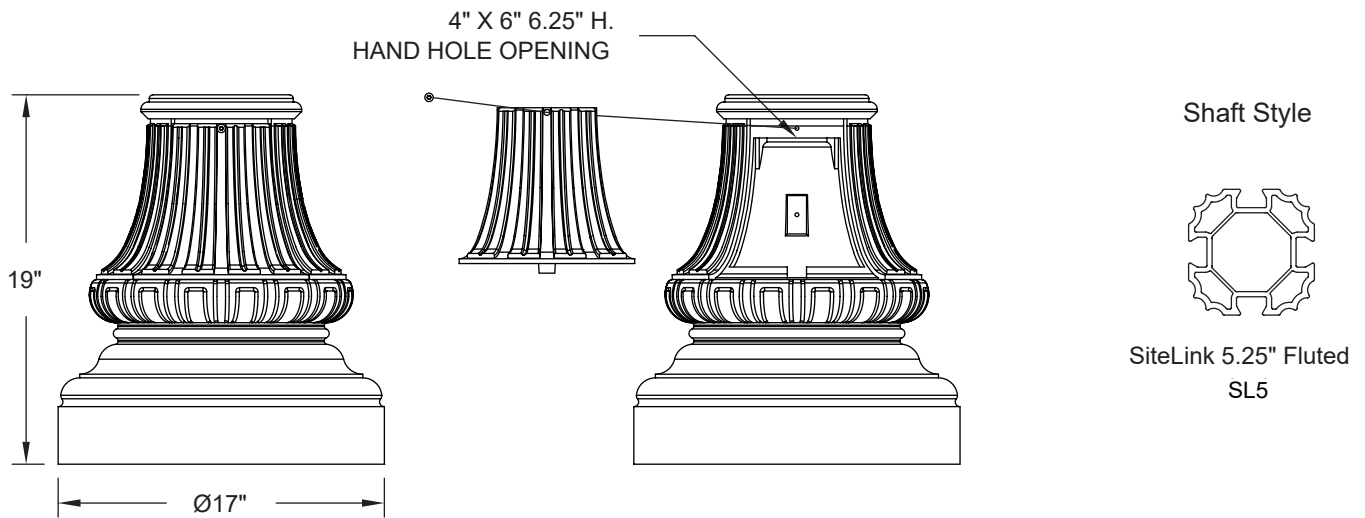
Post	Height	Shaft Style	Base	Tenon
CLA Columbia	08 8 Feet 16 16 Feet	SiteLink SL5 5.25" Fluted, .25 Wall	17D 17" Base, Diamond Pattern Bolt Circle	PLN Pole Cap
	09 9 Feet 17 17 Feet			C03 3X3 Tenon, (actual size 2.88 O.D. x 3" LG.)
	10 10 Feet 18 18 Feet			C04 3X4 Tenon, (actual size 2.88 O.D. X 4" LG.)
	11 11 Feet 19 19 Feet			C05 3X5 Tenon, (actual size 2.88 O.D. X 5" LG.)
	12 12 Feet 20 20 Feet			C06 3X6 Tenon, (actual size 2.88 O.D. X 6" LG.)
	13 13 Feet 21 21 Feet			C08 3X8 Tenon, (actual size 2.88 O.D. X 8" LG.)
	14 14 Feet 22 22 Feet			C09 3X9 Tenon, (actual size 2.88 O.D. X 9" LG.)
15 15 Feet	C12 3X12 Tenon, (actual size 2.88 O.D. X 12" LG.)			
				C14 3X14 Tenon, (actual size 2.88 O.D. X 14" LG.)

NOTE: Refer to Pole Guide on page 3 for height based on Shaft Style.

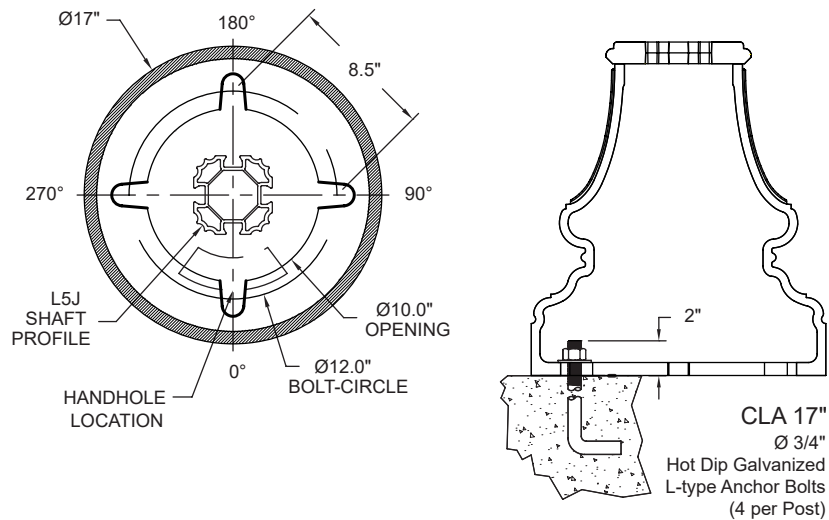
Finish	Options	Welded Provisions	Accessories: Order as separate catalog number
BK Black	GRD 1/2 Brass Grounding Lug	RPXXXY Receptacle provision	AB-31-4 3/4" Anchor bolt set, galvanized steel TMP40012 12" Bolt Circle; 17" Base SiteLink SL5
BZ Bronze			
CMC Customer matched color			
CTBS Standard color to be determined			
DB Dark Blue			
GH Graphite			
GN Green			
GR Gray			
PP Prime Painted			
RALxxxxSDCR RAL Super Durable Corrosion Resistant, 80% Gloss Paint, replace xxxx with RAL number.			
SL Silver			
WH White			

NOTE: Replace "XXX" with height from grade (inches), can be up to 3 digits. Must use whole numbers. Leading zeros are not used. Replace Y with orientation from hand hole (A=0, B=90, C=180, D=270). Add multiple provisions as necessary to cover each location. Must validate EPA restrictions for banners.

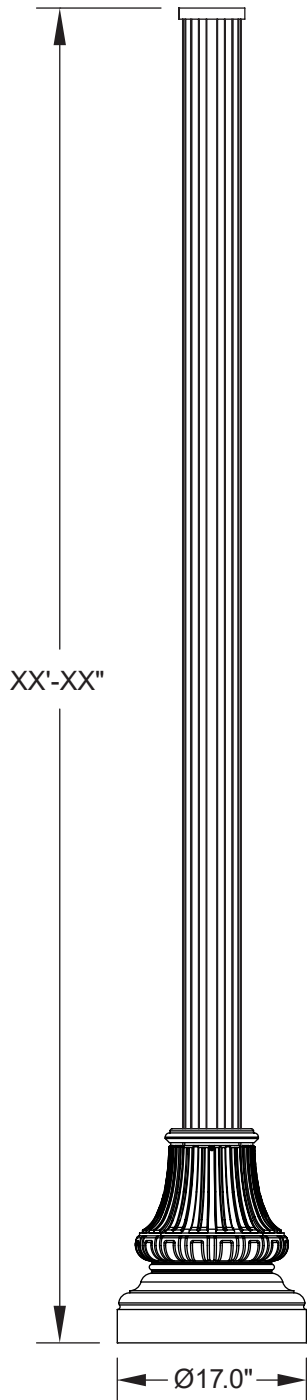
DIMENSIONAL DATA



ANCHORAGE GUIDE



POLE GUIDE



POLE HEIGHT RANGE (For 17" diameter base)

SL5
8' thru 22'

**12060-2
STARBURST
Tree Grate**

60" x 120" Tree grate in four sections for pedestrian loads only

3/8" Maximum slot opening for A.D.A. compliance and pedestrian safety

Cast from 100% recycled gray iron or Aluminum or Cast C854 Copper Alloy.

Tree opening: 16", 18", 28"

Grates can be ordered with or later expanded to these openings. Please specify when ordering.

Finish: Unfinished or Black Dip, or Enamel paint, or Polyurethane paint, or Powder coat. Zinc undercoat available.

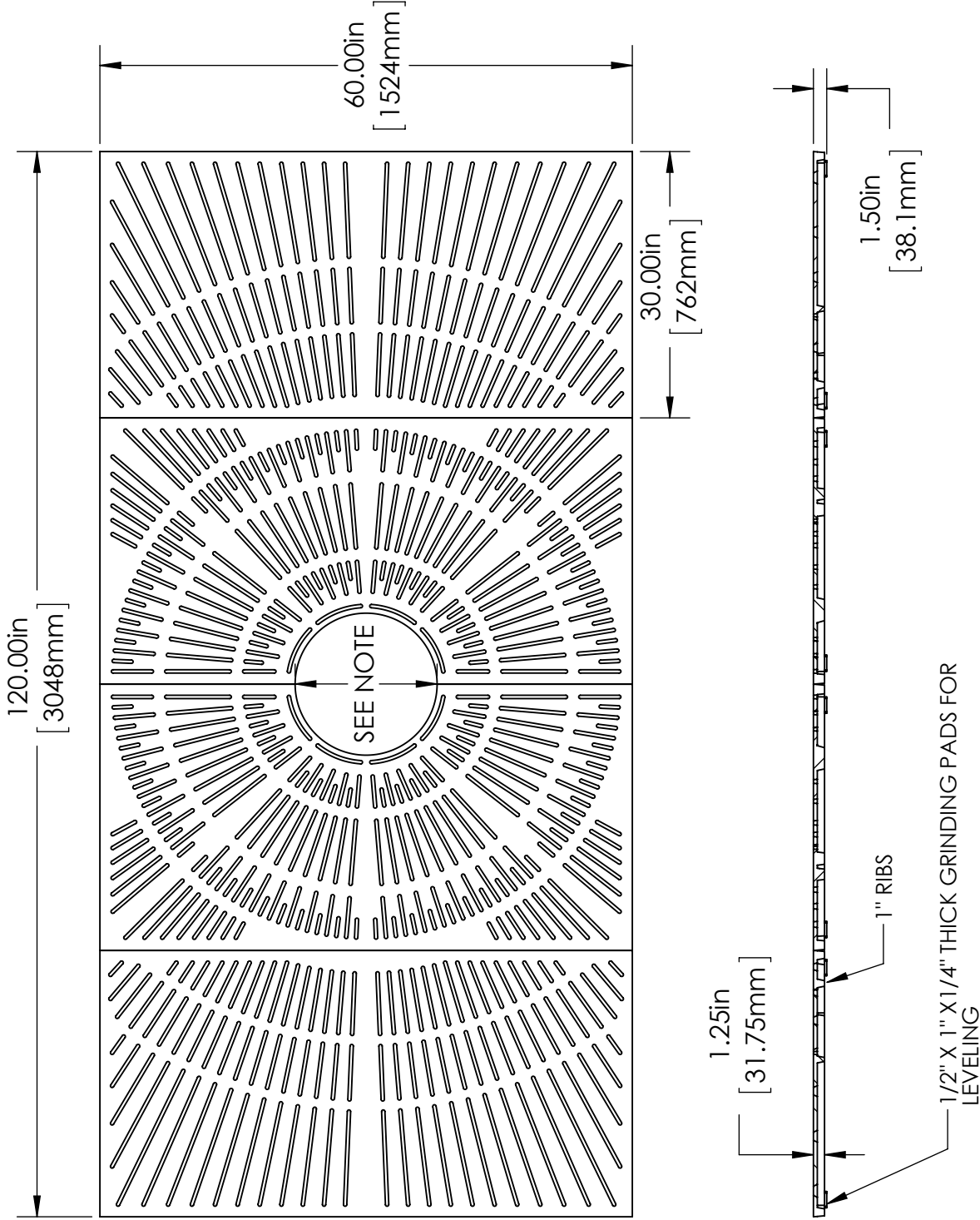
Specify finish and color

Use frame model: 60X120F

Weight: iron = 1000lb./454.5 Kg Aluminum: 334lb./151.8 Kg

DO NOT SCALE

IRONSMITH
41-701 Corporate
Palm Desert, CA
(800) 338-5959
(760) 776-5080 Fax



PROPRIETARY AND CONFIDENTIAL
This drawing embodies a confidential design of IRONSMITH, INC., Palm Desert, CA. All design, manufacturing, reproduction, use, sale, and other rights regarding the same are expressly reserved. This drawing is submitted under confidential relationship for a specific purpose and the recipient agrees by accepting this drawing not to supply or disclose any information regarding it to any unauthorized person or to incorporate any special feature peculiar to this design in other projects. The information in this drawing may be covered completely or in part by patents pending.

C-Series LED

16209

L10

120V-277V LED Small Accent, 5W & 10W



Select Models



PROJECT:

TYPE:

ORDERING:

COMMENTS:

APPLICATIONS

Kichler's 120V-277V LED accent lighting fixtures are designed for outdoor lighting applications requiring uniform light sources, with long life, and little maintenance requirements.

CONSTRUCTION

Die-cast aluminum construction with durable polyester powder coating. Vandal resistant hardware, reinforced knuckle design, a water draining front end with an integrated cowl. Accent fixtures accept various lens or louver accessories.

ELECTRICAL

ETL listed to UL and CSA Standards for 120V-277 VAC (50/60 Hz), and suitable for wet locations. Integrated surge protection (4kV) comes standard.

OPTICS

Utilizes a single LED chip-on-board light source that provides for center-to-edge uniformity and enhances beam control. Three-step binning for tight color consistency. Available in three standard beam angles: 15, 40 or 55 degrees.

LISTINGS

ETL wet label listed to UL and CSA Standards. IP66 rated. FCC compliant.

ORDERING MATRIX (Model # +Finish & CCT Codes) & LUMEN INFORMATION

Model #	Finish	CCT (30 / 40)	Wattage	CRI	Beam Angle	Lumen	Lm/W	L70 (hrs)
16209	AZT or BKT	3000K	5.2	80 (+)	15 Deg	473	91	60,000
16209	AZT or BKT	4000K	5.0	80 (+)	15 Deg	495	99	60,000
16210	AZT or BKT	3000K	5.2	80 (+)	40 Deg	478	93	60,000
16210	AZT or BKT	4000K	5.1	80 (+)	40 Deg	514	100	60,000
16211	AZT or BKT	3000K	5.3	80 (+)	55 Deg	478	91	60,000
16211	AZT or BKT	4000K	5.3	80 (+)	55 Deg	495	93	60,000
16212	AZT or BKT	3000K	9.9	80 (+)	15 Deg	831	84	60,000
*16212	AZT or BKT	4000K	10.0	80 (+)	15 Deg	914	91	60,000
16213	AZT or BKT	3000K	10.1	80 (+)	40 Deg	831	82	60,000
*16213	AZT or BKT	4000K	10.3	80 (+)	40 Deg	942	91	60,000
16214	AZT or BKT	3000K	9.9	80 (+)	55 Deg	807	82	60,000
*16214	AZT or BKT	4000K	10.2	80 (+)	55 Deg	934	91	60,000

Example: 16209BKT40 is model 16209 in Textured Black, 4000K

Each model is available with a finish in BKT - Textured Black or AZT - Textured Architectural Bronze

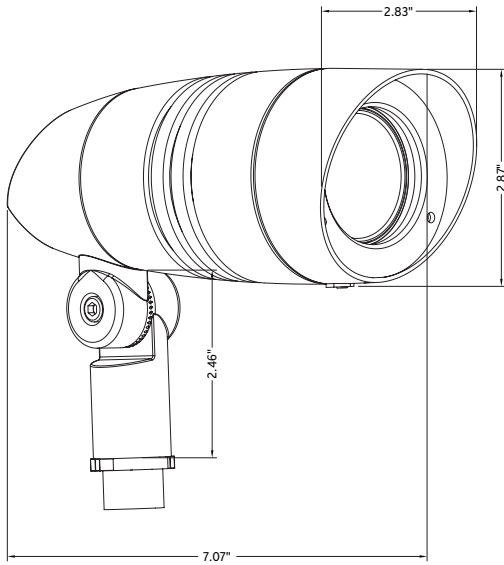
*DLC Qualified Products. For the most current listing, visit www.designlights.org

KICHLER

C-Series LED

120V-277V LED Small Accent, 5W & 10W

DIMENSIONS



INCLUDED ACCESSORIES

Three (3) King Innovation Gel-Filled twist-on wire connectors

ACCESSORIES

Ordered & shipped separately (for knuckle only)

- 15645 AZT, BKT** - 6" Stem Corrosion resistant
- 15656 AZT, BKT** - 12" Stem aluminum alloy with
- 15657 AZT, BKT** - 18" Stem baked thermoset
- 15658 AZT, BKT** - 24" Stem powder coating.

15276 BKT - Power Post: A Fast, One-Step Connector
 Made of Impact / Corrosion Resistant PVC
 2.25" Inside Diameter to Accommodate Conduits
 of Different Sizes
 Accepts .50 NPSM Thread
 Designed For 120V-277V Line Voltage Landscape Lighting,
 Eliminating Need For Above or Below Ground Boxes.
 Built-in Stabilizer Removes Need For Concrete

15601 AZT, BKT - Cast Aluminum Surface Mounting
 Flange with Bronze or Black Finish, Neoprene Gasket For
 Watertight Seal

15609 AZT, BKT - Junction Box Mounting Bracket
 Corrosion Resistant Cast Aluminum Alloy with Baked
 Thermoset Bronze or Black Powder Coat Finish

PHOTOMETRIC DIAGRAMS

