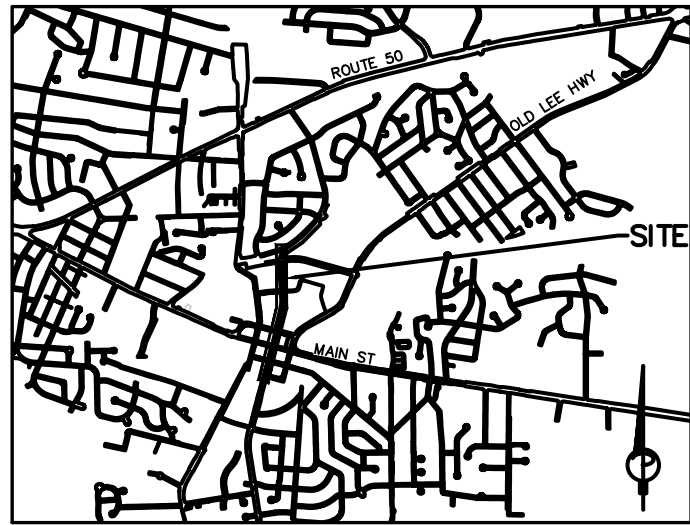


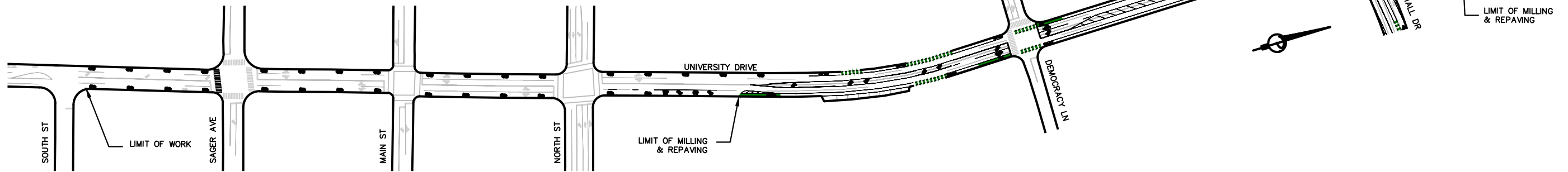
CITY OF FAIRFAX, VIRGINIA

UNIVERSITY DRIVE BIKE LANES

FROM SOUTH STREET TO KENMORE DRIVE



VICINITY MAP
SCALE 1" = 4000'



AREA MAP
SCALE 1" = 200'

PAVEMENT MARKINGS

- | | |
|---|---|
| (A) TYPE B, CLASS I, WHITE 4" LINE | (J) TYPE B, CLASS I, WHITE 4" LINE 45 DEGREES, 5' DISTANCE TO CENTER OF LINES |
| (B) TYPE B, CLASS I, YELLOW 4" LINE | (K) TYPE B, CLASS I, YELLOW 4" LINE 45 DEGREES, 20' DISTANCE TO CENTER OF LINES |
| (C) TYPE B, CLASS I, YELLOW 4" DOUBLE LINE | (L) TYPE B, CLASS I, WHITE SUPER SHARROW LANE BIKE MARKING SYMBOL |
| (D) TYPE B, CLASS I, YELLOW 4" TWO-WAY LEFT TURN LANE, SOLID LINE AND DASHED LINE, 10' LONG 30' SPACE | (M) TYPE B, CLASS I, WHITE SHARED LANE BIKE MARKING SYMBOL |
| (E) TYPE B, CLASS I, 24" STOP BAR | (N) TYPE B, CLASS I, WHITE BIKE LANE MARKING SYMBOL |
| (F) TYPE B, CLASS I, WHITE ARROW PAVEMENT MARKING SYMBOL | |
| (G) TYPE B, CLASS I, HIGH VISIBILITY CROSS WALK, 10 FT WIDTH | |
| (H) BIKE LANE CONFLICT ZONE STRIPING | |
| (I) BIKE WARNING BOX | |

NOTE: NEW LIGHTING ASSUMED EVERY 150' ON UNIVERSITY DRIVE FROM NORTH STREET TO LAYTON HALL DRIVE FOR BUDGETING PURPOSES

LEGEND

- | | |
|--|-------------------------------|
| | EXISTING ROW |
| | FLOODPLAIN |
| | STORMWATER CONNECTIVITY LINES |
| | STREAM |
| | 2-FT CONTOUR |
| | EXISTING BUILDING |
| | CURB EXTENSION |
| | MEDIAN AND CURB REMOVAL |
| | SIGN |

SHEET INDEX

- | | |
|-----|--------------------|
| 1 | COVER SHEET |
| 2-5 | SIGNING + STRIPING |

FOR INFORMATION ONLY

KITTELSON & ASSOCIATES
11480 COMMERCE PARK DRIVE, SUITE 450
RESTON, VA 20191
P 703.865.8870

#	DATE	REVISION	APPD.

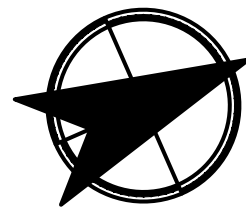
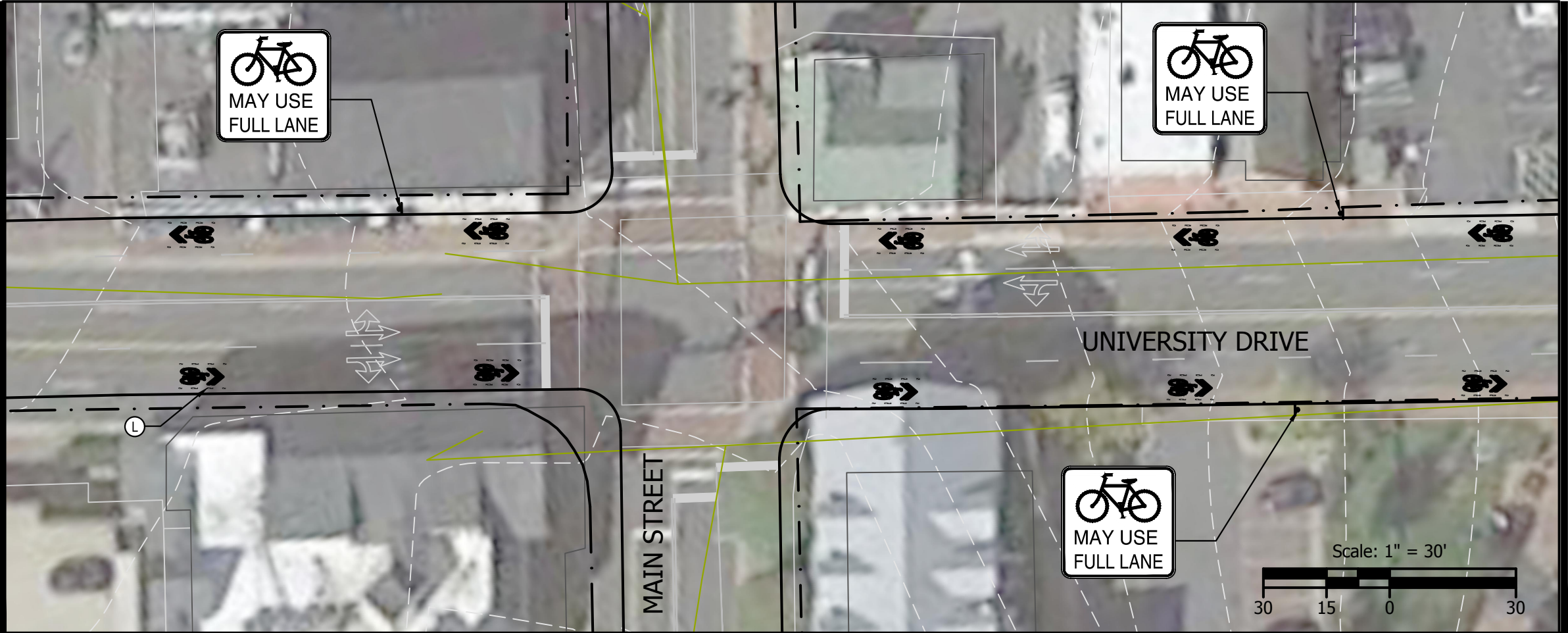
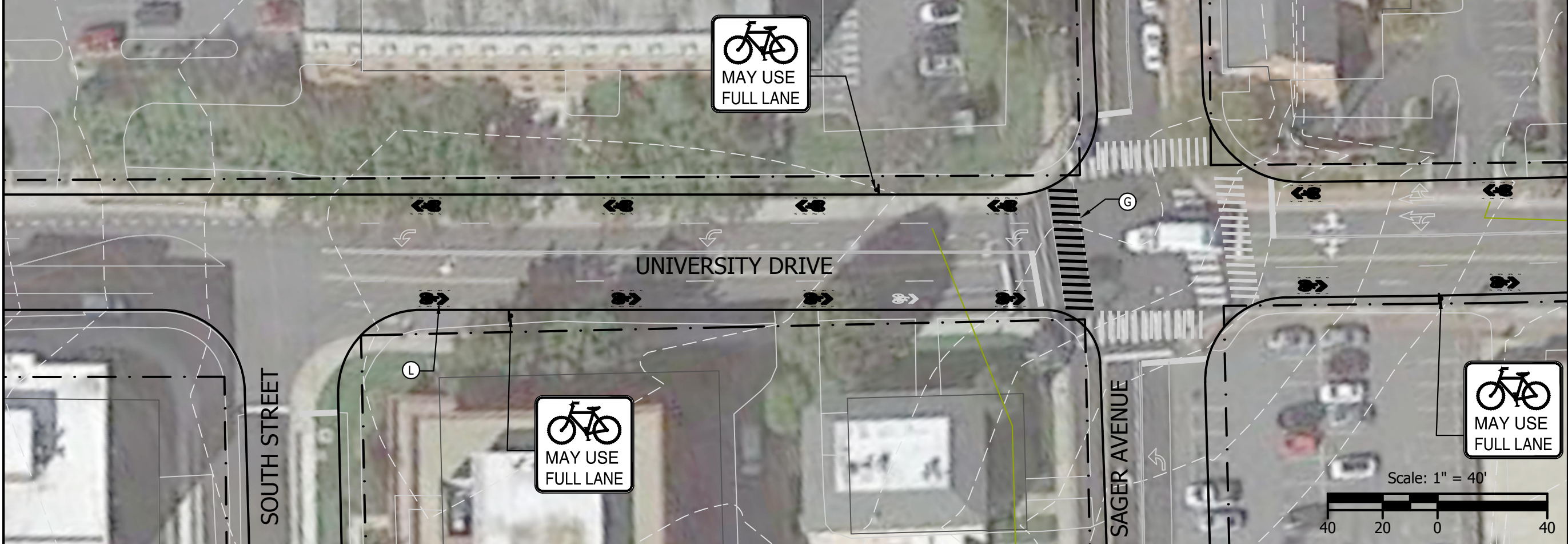
Submission Date: 08/20/2021
Drawn: KDC Designed: KDC Checked: WRW
PROJECT NO. 26497

University Drive Design Sheets
City of Fairfax, Virginia

SHEET NO. 1 of 5

Plot Stamp: 8/31/2021 11:31:17 AM - Kylie Caviness
File: H:\26\26497 - University Drive Bike Lanes\design\Models\University Drive Basemap without signal.dwg

Plot Stamp: 8/31/2021 11:31:23 AM - Kylie Caviness
 File: H:\26\26497 - University Drive Bike Lanes\design\Models\University Drive Basemap without signal.dwg



FOR INFORMATION ONLY

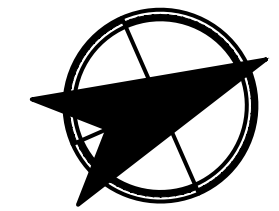
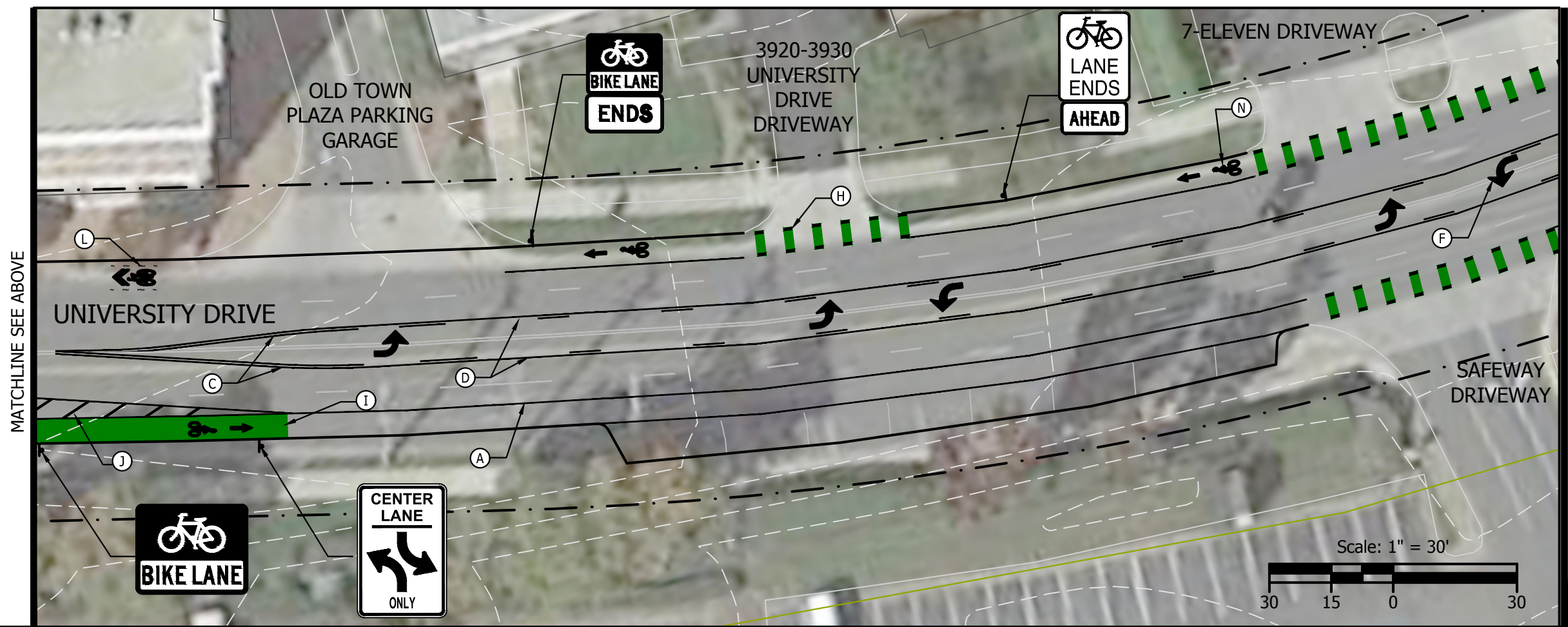
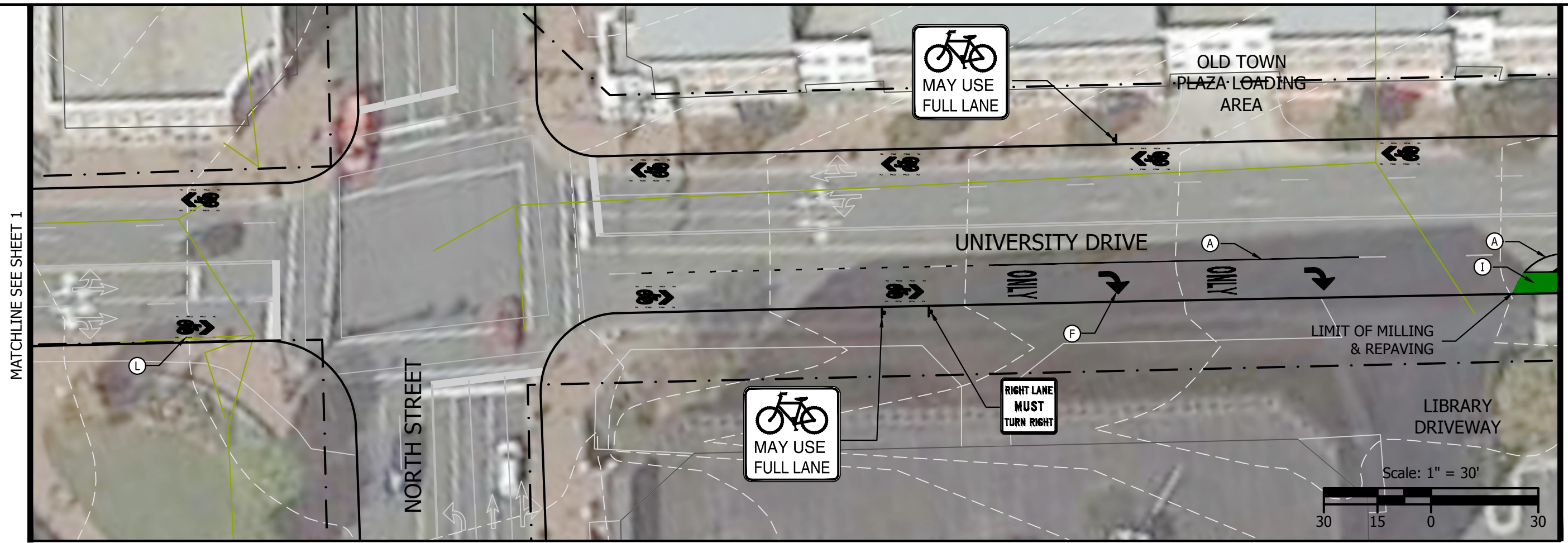
KITTELSON & ASSOCIATES
 11480 COMMERCE PARK DRIVE, SUITE 450
 RESTON, VA 20191
 P 703.865.8870

#	DATE	REVISION	APPD.

Submission Date: 08/20/2021
 Drawn: KDC
 Designed: KDC
 Checked: WRW
 PROJECT NO. 26497

University Drive Design Sheets
 City of Fairfax, Virginia

Plot Stamp: 8/31/2021 11:31:28 AM - Kyle Caviness
 File: H:\26\26497 - University Drive Bike Lanes\design\...Models\University Drive Basemap without signal.dwg



FOR INFORMATION ONLY

KITTELSON & ASSOCIATES
 11480 COMMERCE PARK DRIVE, SUITE 450
 RESTON, VA 20191
 P 703.885.8870

#	DATE	REVISION

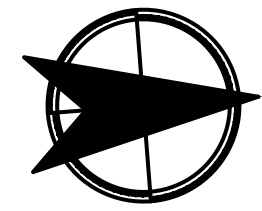
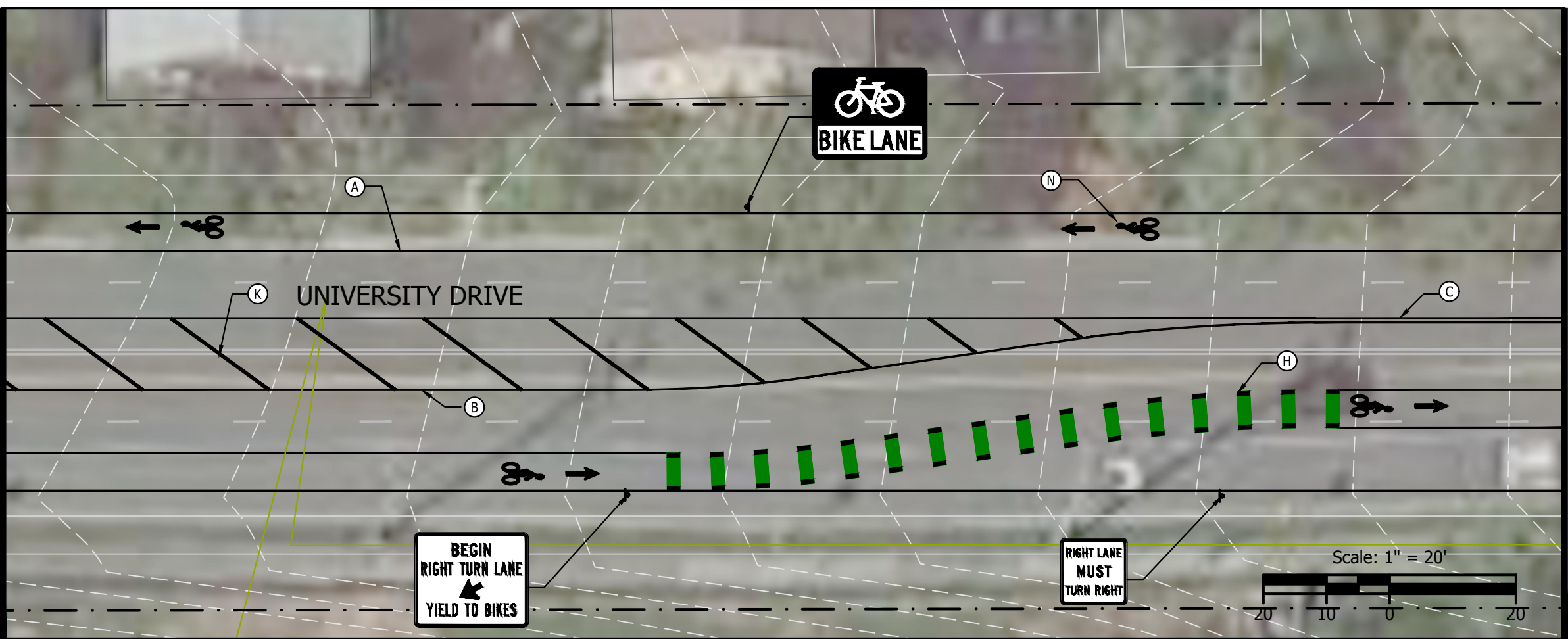
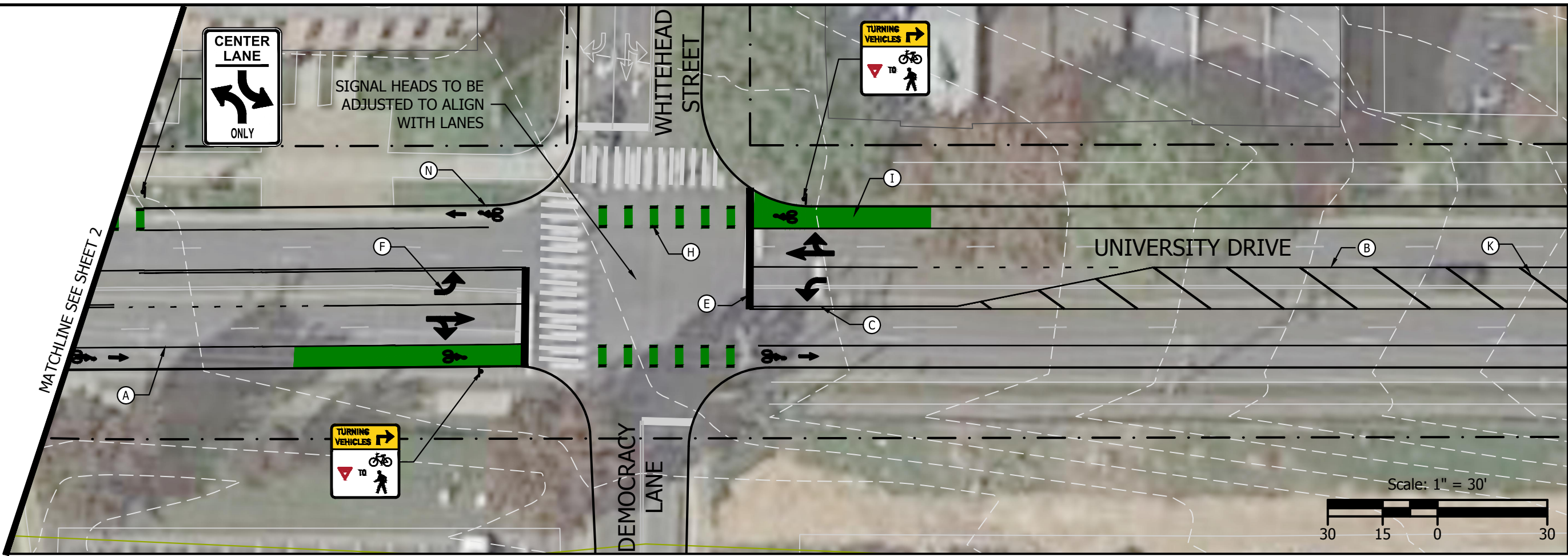
Submission Date: 08/20/2021
 Drawn: KDC Designed: KDC Checked: WRW

PROJECT NO. 26497

University Drive Design Sheets
 City of Fairfax, Virginia

SHEET NO. 3 of 5

Plot Stamp: 8/31/2021 11:31:32 AM - Kylie Caviness
 File: H:\26\26497 - University Drive Bike Lanes\design\...Models\University Drive Baseemap without signal.dwg



FOR INFORMATION ONLY

KITTELSON & ASSOCIATES
 11480 COMMERCE PARK DRIVE, SUITE 450
 RESTON, VA 20191
 P 703.865.8870

NO.	REVISION	DATE	APPD.

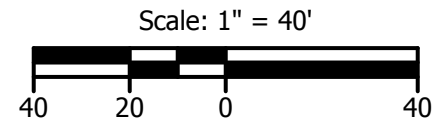
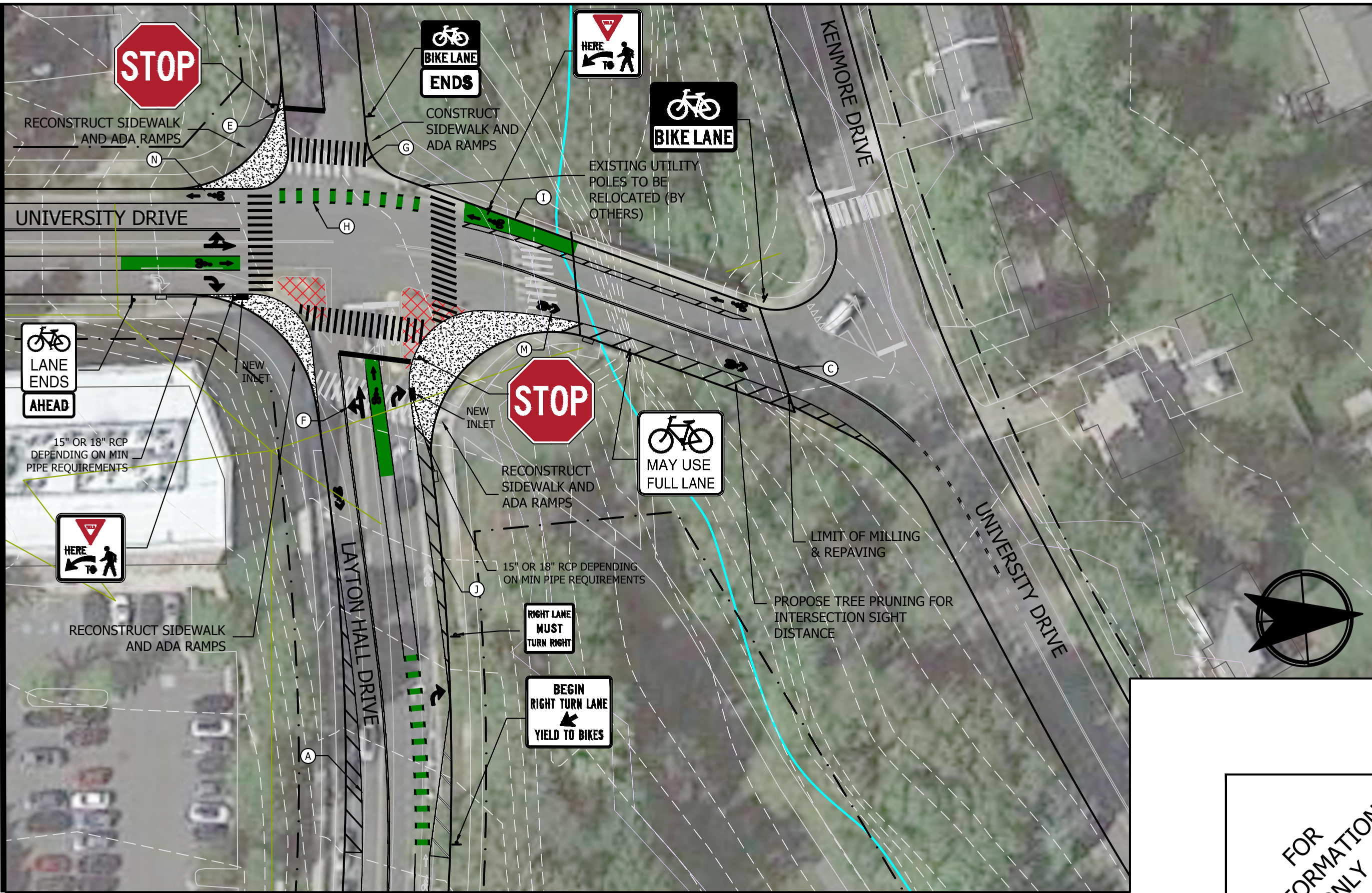
Submission Date: 08/20/2021
 Drawn: KDC Designed: KDC Checked: WRW
 PROJECT NO. 26497

University Drive Design Sheets
 City of Fairfax, Virginia

SHEET NO. 4 of 5

Plot Stamp: 8/31/2021 11:31:35 AM - Kylie Caviness
 File: H:\26\26497 - University Drive Bike Lanes\design\...Models\University Drive Basemap without signal.dwg

MATCHLINE SEE SHEET 3



FOR INFORMATION ONLY

 11480 COMMERCE PARK DRIVE, SUITE 450 RESTON, VA 20191 P 703.865.8870	
Submission Date:	08/20/2021
Drawn:	KDC
Designed:	KDC
Checked:	WRW
PROJECT NO.	26497
University Drive Design Sheets	City of Fairfax, Virginia
SHEET NO.	5 of 5