

OWNER
 OX HILL COMPANIES
 10523 MAIN ST. SUITE 200
 FAIRFAX, VA 22030

DESIGN ARCHITECT
 DAVID M. SCHWARZ ARCHITECTS, INC.
 1707 L ST. NW, SUITE 400
 WASHINGTON, D.C. 20036

ARCHITECT OF RECORD
 PAGE SOUTHERLAND PAGE, INC.
 1615 M ST. NW, SUITE 700
 WASHINGTON DC 20036

CIVIL ENGINEER:
 URBAN-LTD
 4200 D. TECHNOLOGY COURT
 CHANTILLY, VA 20151

TRAFFIC ENGINEER:
 GOROVE-SLADE ASSOCIATES INC.
 3914 CENTERVILLE RD. SUITE 300
 CHANTILLY, VA 20151

LANDSCAPE ARCHITECT:
 URBAN-LTD
 4200 D. TECHNOLOGY COURT
 CHANTILLY, VA 20151

STRUCTURAL ENGINEER:

MEP ENGINEER:

Design Documents have been prepared solely for the limited purpose of establishing the Project's aesthetic architectural design intent. The Design Documents shall not be used for construction, permitting, or any other use inconsistent with the limited purpose of establishing aesthetic architectural design intent. Any dimensional or technical information contained in the Design Documents is provided solely for illustrative purposes and shall not be relied upon. Any use of the Project's aesthetic architectural design intent shall be at user's sole risk and without liability to the Design Architect. Further, to the extent permitted by law, any use of these Design Documents constitutes an agreement by the user to indemnify and hold harmless the Design Architect and its officers, directors, employees and consultants from all damages, liability, costs and expenses, including the cost of defense, related to claims and causes of action asserted by any third parties or entity to the extent such damages, liability, costs and expenses arise from use of the Design Documents for purposes other than establishing the Project's aesthetic architectural design intent. Any use of these Design Documents for any purpose constitutes acceptance of the above terms and conditions by the user.

These drawings, specifications, and other documents, (the "Documents") including electronic versions thereof and the ideas, design and arrangements represented thereby, are and shall remain the property of David M. Schwarz Architects, Inc. as defined by applicable contractual agreements (the "Agreement") and as protected by the copyright statutes of the United States. Use of the Documents shall be strictly limited to the project for which they were prepared and developed. (The Project) per the terms of the Agreement. No part of the Documents shall be copied, disclosed to others, or used in connection with any other work or project, or by any other person for any other purpose, other than the completion of the Project without the specific written authorization of David M. Schwarz Architects, Inc. The downloading, printing, or viewing of electronic versions of the Documents or visual contact with any printed form thereof shall constitute conclusive evidence of acceptance of these restrictions.

REVISIONS

#	DATE	DESCRIPTION

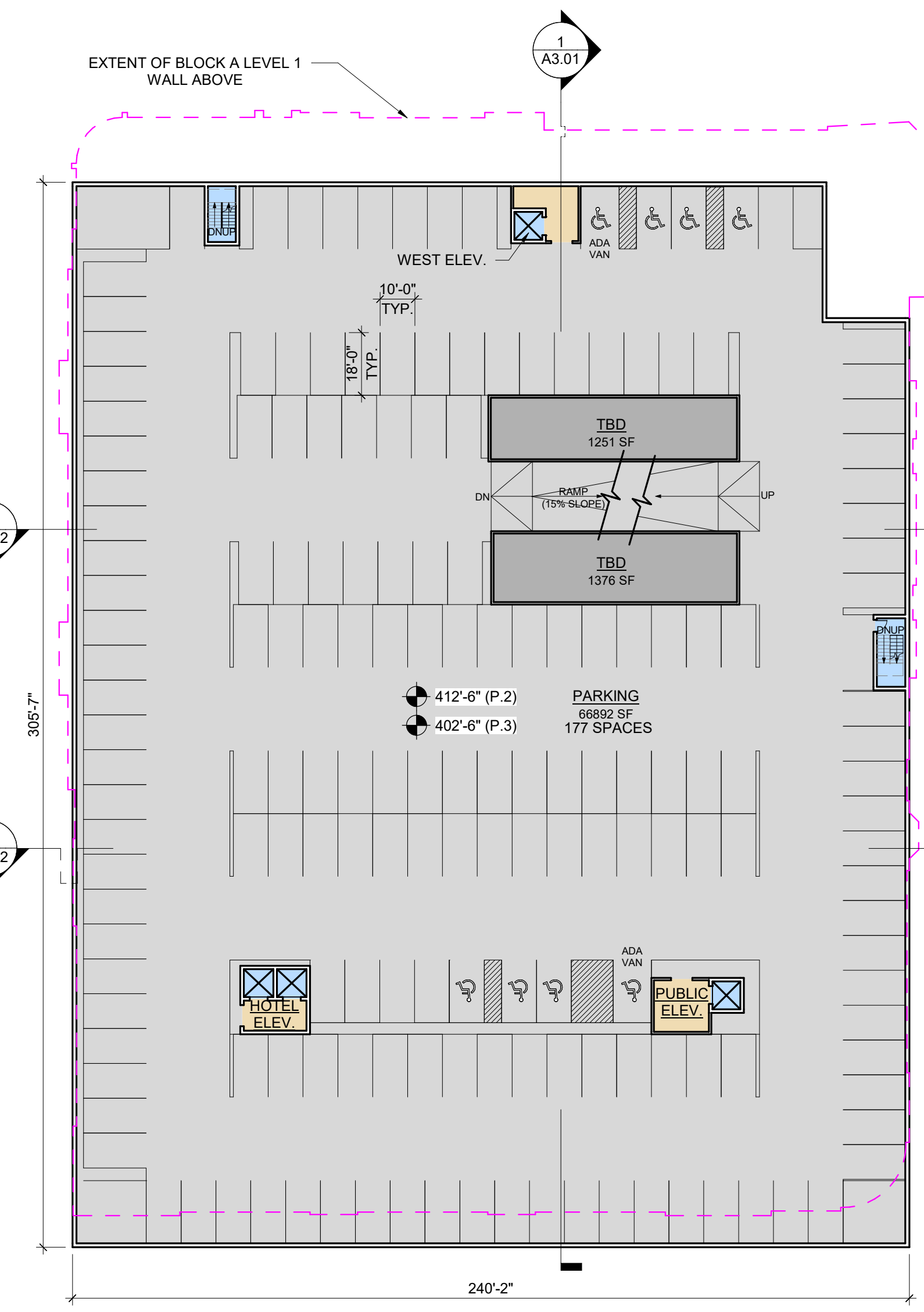
PRINTED: 1/5/2024 11:16:42 AM

ISSUED: 1/5/2024

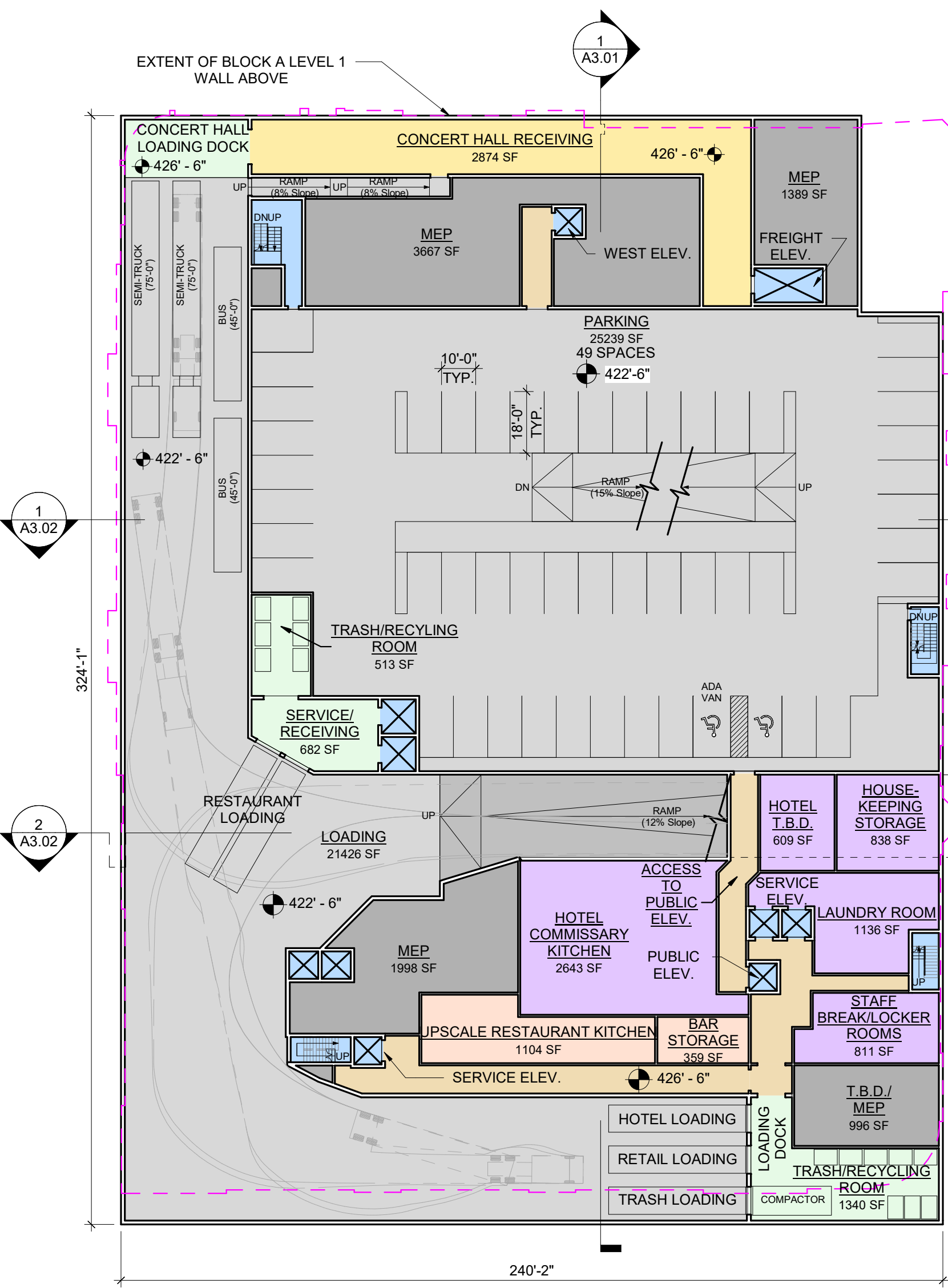
SHEET TITLE:
 LEVEL P2/3, P1, P0 - FLOOR PLANS

SHEET NO.:

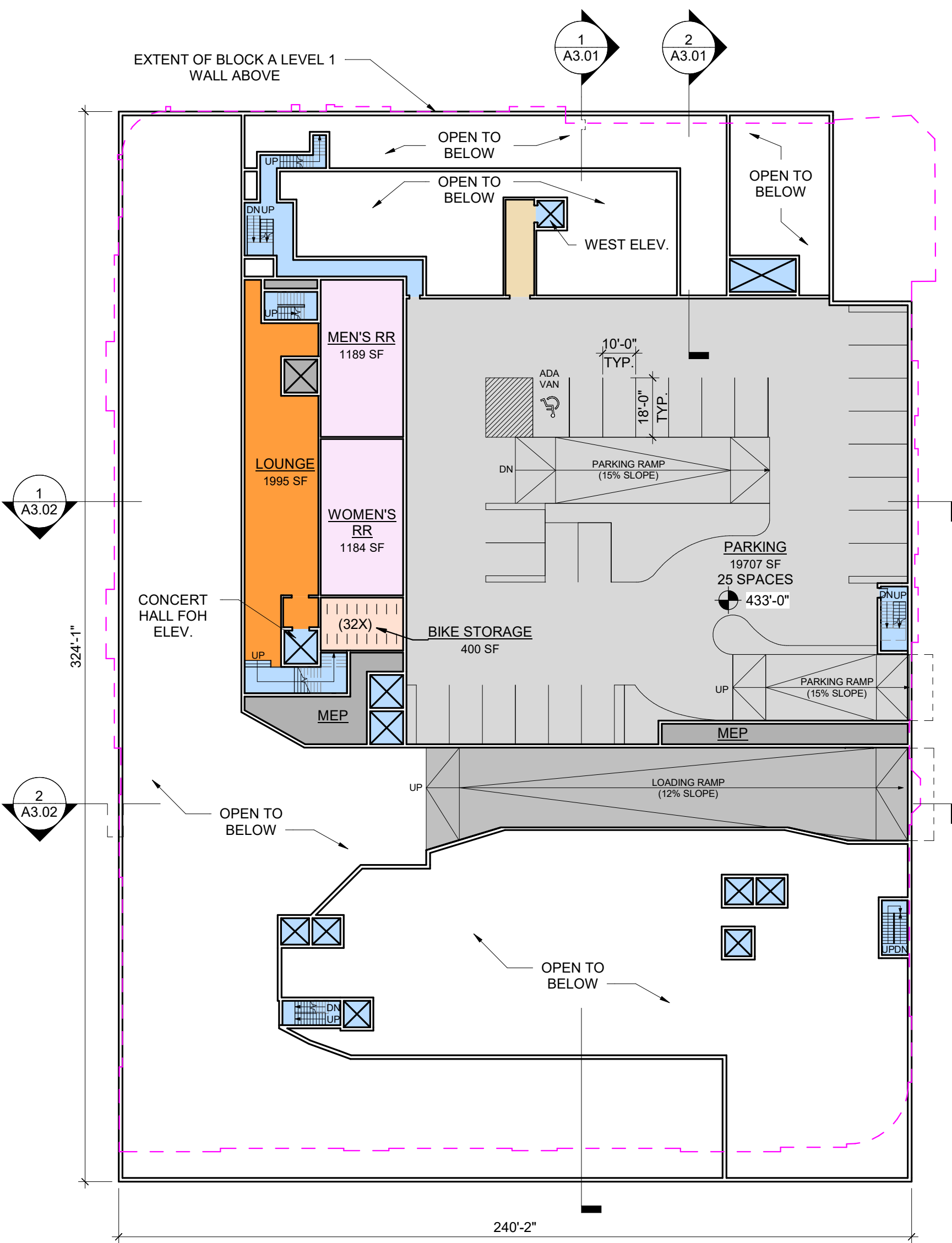
A1.00



1
A1.00 LEVEL P2/P3 - FLOOR PLAN
 SCALE: 1/32" = 1'-0"

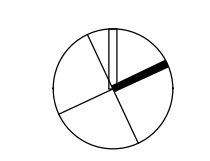


2
A1.00 LEVEL P1 - FLOOR PLAN
 SCALE: 1/32" = 1'-0"



3
A1.00 LEVEL P0 - FLOOR PLAN
 SCALE: 1/32" = 1'-0"

GENERAL NOTES:
 1) FLOOR PLANS ARE PROVIDED FOR INFORMATION ONLY. ALSO, THEY ARE PRELIMINARY AND ARE SUBJECT TO CHANGE BASED ON LEASING AND ARCHITECTURAL DEVELOPMENT.
 2) TURNING MOVEMENTS SHOWN FOR LARGEST VEHICLE TYPE @ P1 FLOOR PLAN.
 3) PROVIDED PARKING SPACE SIZE INCLUDES ADDED DIMENSION FOR FUTURE INCORPORATION + COORDINATION OF COLUMN GRID AND ADA VAN PARKING SPACES.



MEP ENGINEER:

Design Documents have been prepared solely for the limited purpose of establishing the Project's aesthetic architectural design intent. The Design Documents shall not be used for construction, permitting, or any other use inconsistent with the limited purpose of establishing aesthetic architectural design intent. Any dimensional or technical information contained in the Design Documents is provided solely for illustrative purposes and shall not be relied upon. Any use of the Project's aesthetic architectural design intent shall be at user's sole risk and without liability to the Design Architect. Further, to the extent permitted by law, any use of these Design Documents constitutes an agreement by the user to indemnify and hold harmless the Design Architect and its officers, directors, employees and consultants from all damages, liability, costs and expenses, including the cost of defense, related to claims and causes of action asserted by any third person or entity to the extent such damages, liability, costs and expenses arise from use of the Design Documents for purposes other than establishing the Project's aesthetic architectural design intent. Any use of these Design Documents for any purpose constitutes acceptance of the above terms and conditions by the user.

These drawings, specifications, and other documents, (the "Documents") including electronic versions thereof and the ideas, design and arrangements represented thereby, are and shall remain the property of David M. Schwarz Architects, Inc., as defined by applicable contractual agreements (the "Agreement") and as protected by the copyright statutes of the United States. Use of the Documents shall be strictly limited to the project for which they were prepared and developed. (The Project) per the terms of the Agreement. No part of the Documents shall be copied, disclosed to others, or used in connection with any other work or project, or by any other person for any other purpose, other than the completion of the Project without the specific written authorization of David M. Schwarz Architects, Inc. The downloading, copying, or viewing of electronic versions of the Documents or visual contact with any printed form thereof shall constitute conclusive evidence of acceptance of these restrictions.

REVISIONS

#	DATE	DESCRIPTION

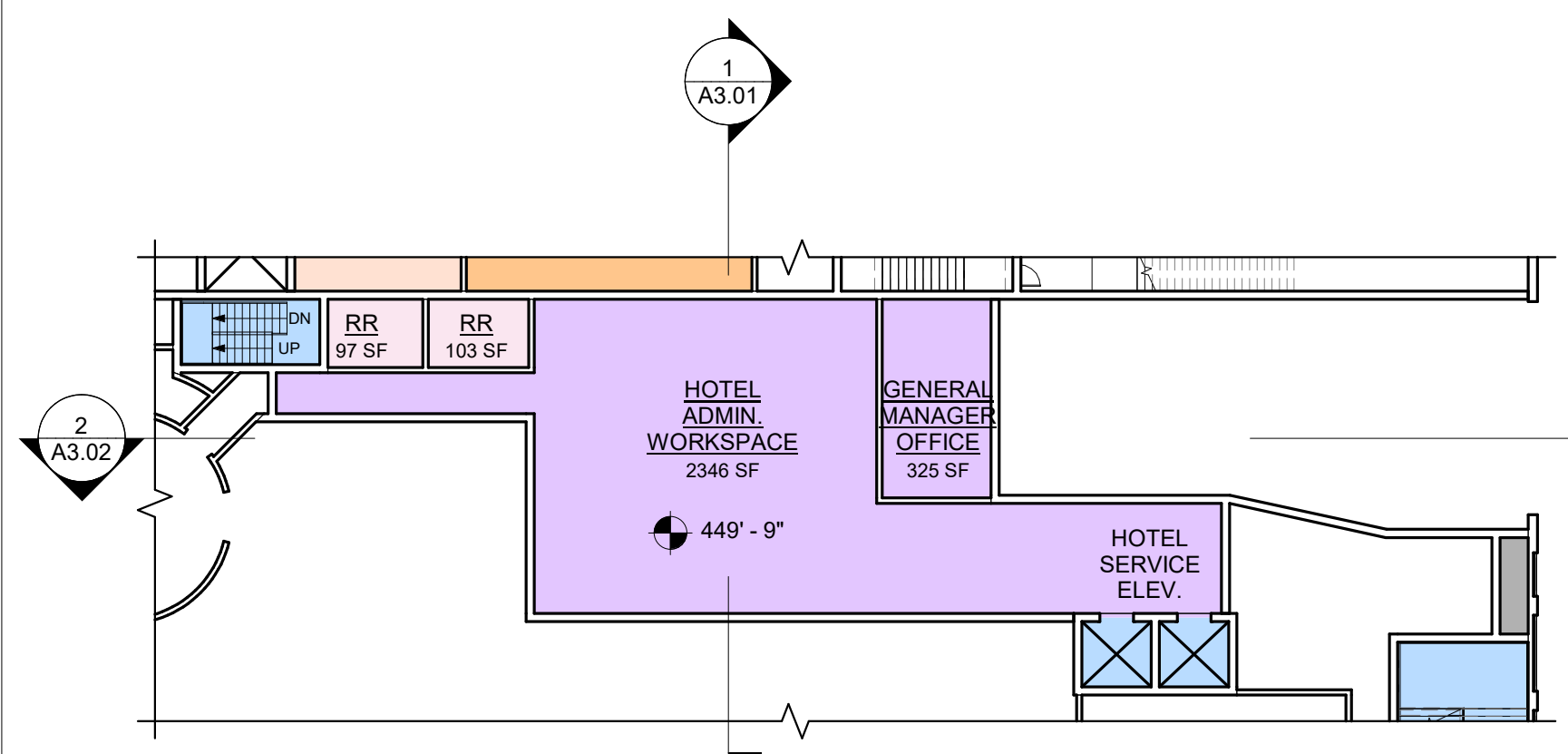
PRINTED: 1/5/2024 11:16:45 AM

ISSUED: 1/5/2024

SHEET TITLE:
 LEVEL 1 - FLOOR PLAN

SHEET NO.:

A1.01



2 LEVEL 1 - MEZZANINE OFFICES FLOOR PLAN
 SCALE: 3/64" = 1'-0"

1 LEVEL 1 - FLOOR PLAN
 SCALE: 3/64" = 1'-0"

GENERAL NOTE:
 1) FLOOR PLANS ARE PROVIDED FOR INFORMATION ONLY. ALSO, THEY ARE PRELIMINARY AND ARE SUBJECT TO CHANGE BASED ON LEASING AND ARCHITECTURAL DEVELOPMENT.



OWNER
 OX HILL COMPANIES
 10523 MAIN ST. SUITE 200
 FAIRFAX, VA 22030

DESIGN ARCHITECT
 DAVID M. SCHWARZ ARCHITECTS, INC.
 1707 L ST. NW, SUITE 400
 WASHINGTON, D.C. 20036

ARCHITECT OF RECORD
 PAGE SOUTHERLAND PAGE, INC.
 1615 M ST. NW, SUITE 700
 WASHINGTON DC 20036

CIVIL ENGINEER:
 URBAN-LTD
 4200 D, TECHNOLOGY COURT
 CHANTILLY, VA 20151

TRAFFIC ENGINEER:
 GOROVE-SLADE ASSOCIATES INC.
 3914 CENTERVILLE RD. SUITE 300
 CHANTILLY, VA 20151

LANDSCAPE ARCHITECT:
 URBAN-LTD
 4200 D, TECHNOLOGY COURT
 CHANTILLY, VA 20151

STRUCTURAL ENGINEER:

MEP ENGINEER:

Design Documents have been prepared solely for the limited purpose of establishing the Project's aesthetic architectural design intent. The Design Documents shall not be used for construction, permitting, or any other use inconsistent with the limited purpose of establishing aesthetic architectural design intent. Any dimensional or technical information contained in the Design Documents is provided solely for illustrative purposes and shall not be relied upon. Any use of the Design Documents for purposes other than establishing the Project's aesthetic architectural design intent shall be at user's sole risk and without liability to the Design Architect. Further, to the extent permitted by law, any use of these Design Documents constitutes an agreement by the user to indemnify and hold harmless the Design Architect and its officers, directors, employees and consultants from all damages, liability, costs and expenses, including the cost of defense, related to claims and causes of action asserted by any third person or entity to the extent such damages, liability, costs and expenses arise from use of the Design Documents for purposes other than establishing the Project's aesthetic architectural design intent. Any use of these Design Documents for any purpose constitutes acceptance of the above terms and conditions by the user.

REVISIONS

#	DATE	DESCRIPTION

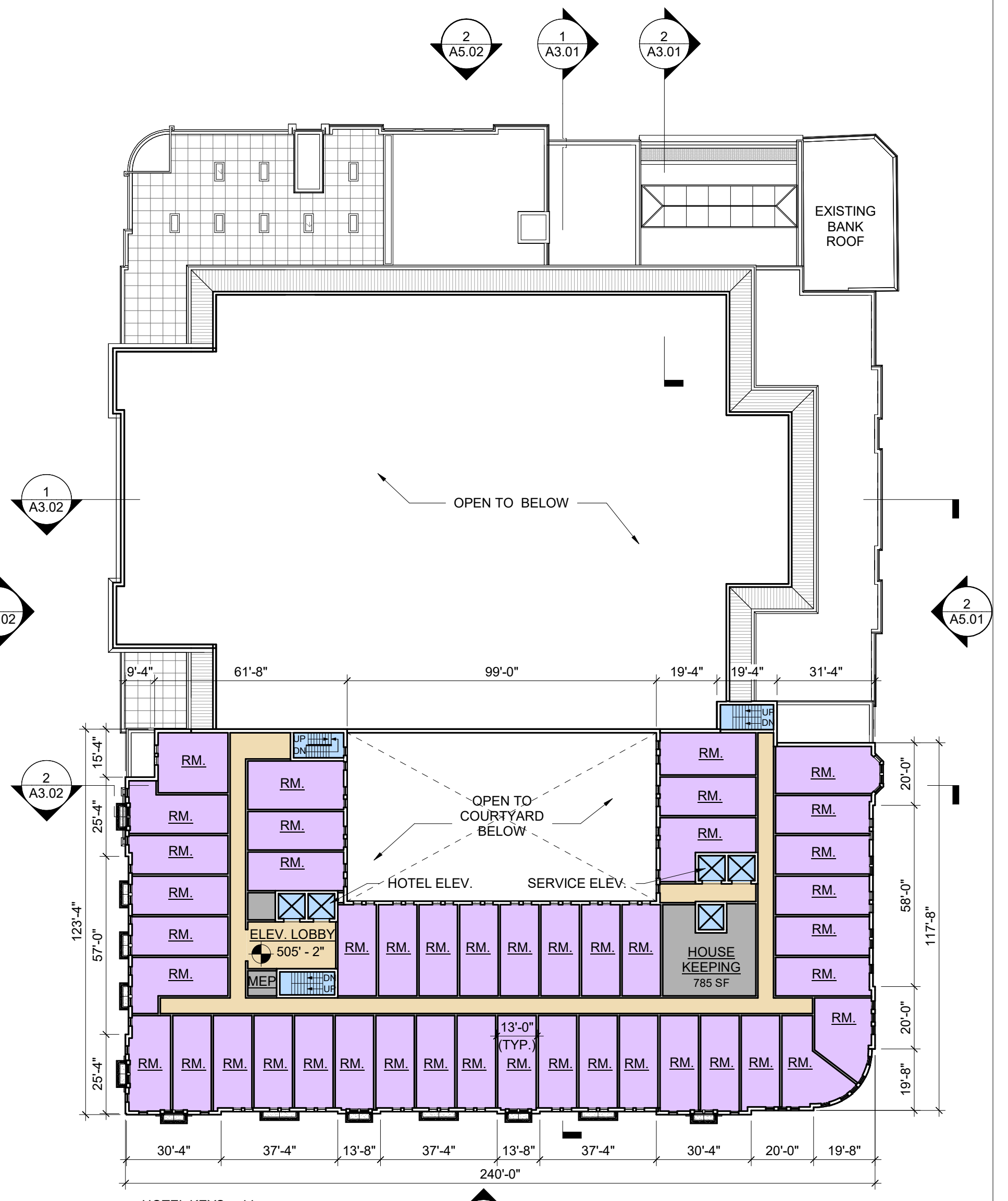
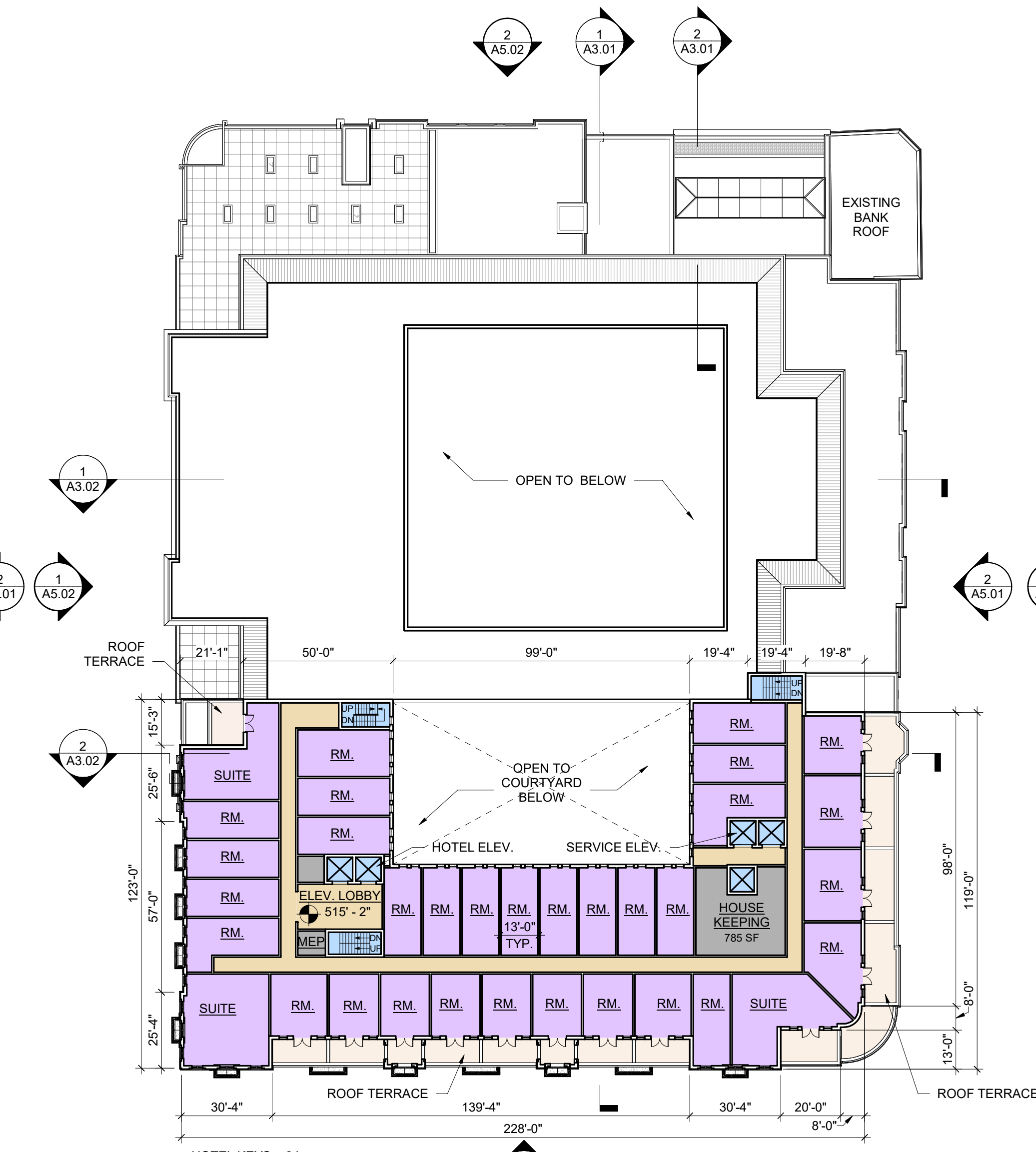
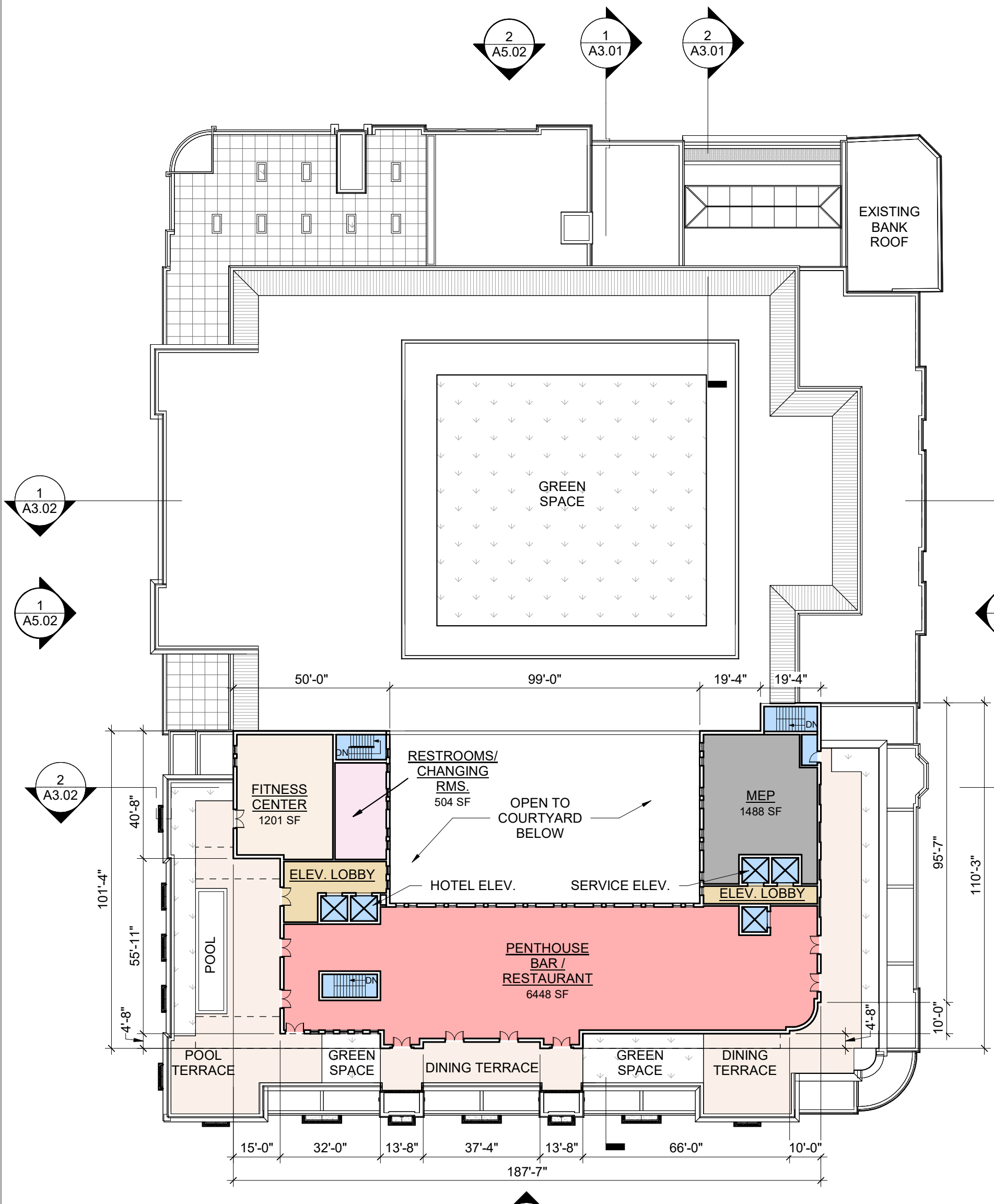
PRINTED: 1/5/2024 11:17:01 AM

ISSUED: 1/5/2024

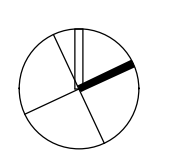
SHEET TITLE:
 LEVEL 5, 6, 7 - FLOOR PLANS

SHEET NO.:

A1.03



GENERAL NOTE:
 1) FLOOR PLANS ARE PROVIDED FOR INFORMATION ONLY. ALSO, THEY ARE PRELIMINARY AND ARE SUBJECT TO CHANGE BASED ON LEASING AND ARCHITECTURAL DEVELOPMENT.



OWNER
 OX HILL COMPANIES
 10523 MAIN ST. SUITE 200
 FAIRFAX, VA 22030

DESIGN ARCHITECT
 DAVID M. SCHWARZ ARCHITECTS, INC.
 1707 L ST. NW, SUITE 400
 WASHINGTON, D.C. 20036

ARCHITECT OF RECORD
 PAGE SOUTHERLAND PAGE, INC.
 1615 M ST. NW, SUITE 700
 WASHINGTON DC 20036

CIVIL ENGINEER:
 URBAN-LTD
 4200 D. TECHNOLOGY COURT
 CHANTILLY, VA 20151

TRAFFIC ENGINEER:
 GOROVE-SLADE ASSOCIATES INC.
 3914 CENTERVILLE RD. SUITE 300
 CHANTILLY, VA 20151

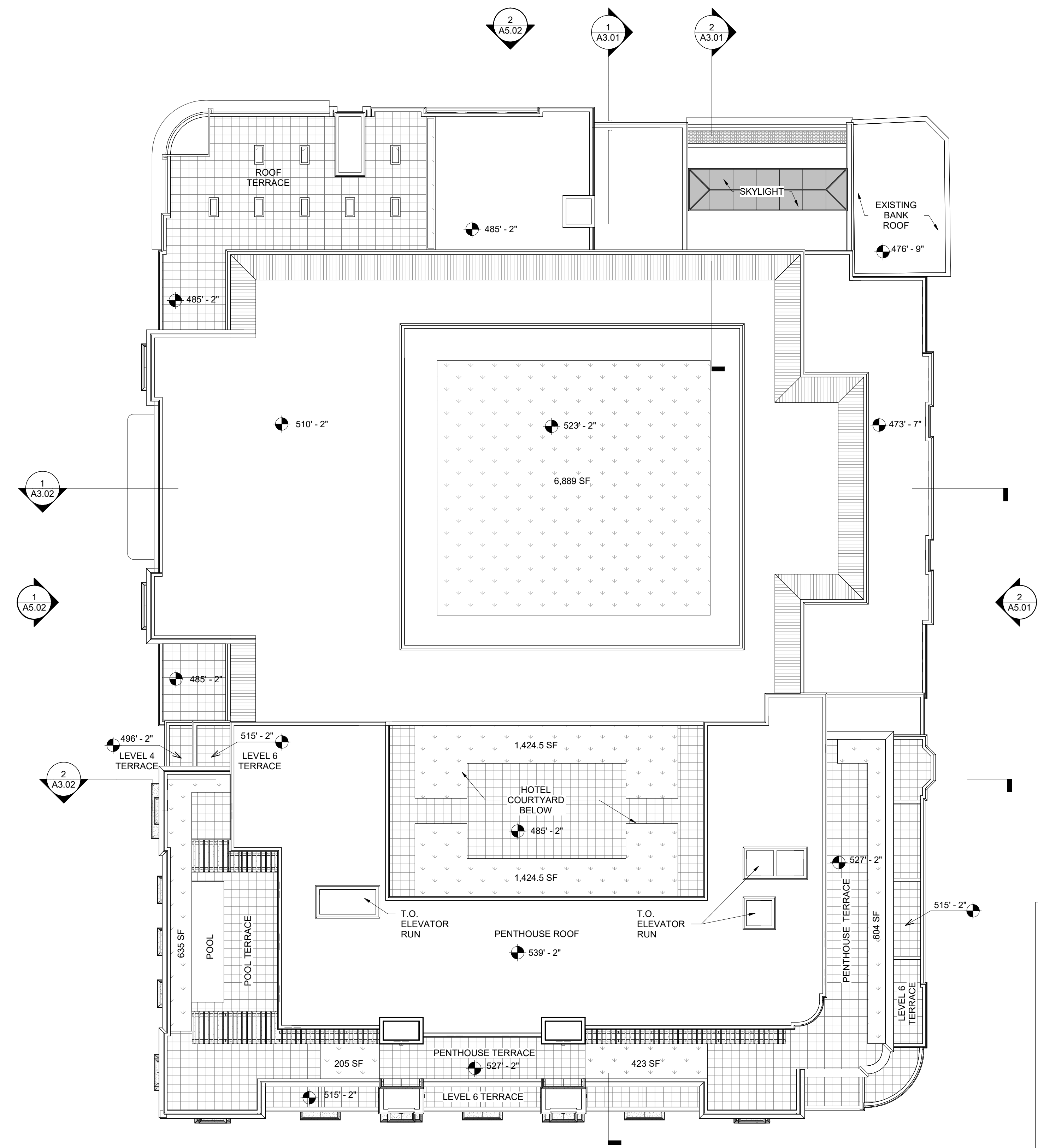
LANDSCAPE ARCHITECT:
 URBAN-LTD
 4200 D. TECHNOLOGY COURT
 CHANTILLY, VA 20151

STRUCTURAL ENGINEER:

MEP ENGINEER:

Design Documents have been prepared solely for the limited purpose of establishing the Project's aesthetic architectural design intent. The Design Documents shall not be used for construction, permitting, or any other use inconsistent with the limited purpose of establishing aesthetic architectural design intent. Any dimensional or technical information contained in the Design Documents is provided solely for illustrative purposes and shall not be relied upon. Any use of the Project's aesthetic architectural design intent shall be at user's sole risk and without liability to the Design Architect. Further, to the extent permitted by law, any use of these Design Documents constitutes an agreement by the user to indemnify and hold harmless the Design Architect and its officers, directors, employees and consultants from all damages, liability, costs and expenses, including the cost of defense, related to claims and causes of action asserted by any third person or entity to the extent such damages, liability, costs and expenses arise from use of the Design Documents for purposes other than establishing the Project's aesthetic architectural design intent. Any use of these Design Documents for any purpose constitutes acceptance of the above terms and conditions by the user.

These drawings, specifications, and other documents, (the "Documents") including electronic versions thereof and the ideas, design and arrangements represented hereby, are and shall remain the property of David M. Schwarz Architects, Inc. as defined by applicable contractual agreements (the "Agreement") and as protected by the copyright statutes of the United States. Use of the Documents shall be strictly limited to the project for which they were prepared and developed. (The Project) per the terms of the Agreement. No part of the Documents shall be copied, disclosed to others, or used in connection with any other work or project, or by any other person for any other purpose, other than the completion of the Project without the specific written authorization of David M. Schwarz Architects, Inc. The downloading, copying, or viewing of electronic versions of the Documents or visual contact with any printed form thereof shall constitute conclusive evidence of acceptance of these restrictions.



ROOF TOP GREEN ROOF TOTAL : 11,605 SF

ROOF MATERIAL KEY

- FLAT ROOF ASSEMBLY
- GREEN ROOF
- TERRACE
- MTL MANSARD ROOF
- CLAY ROOF TILE

GENERAL NOTE: GREEN ROOF LOCATIONS SHOWN ARE ILLUSTRATIVE

1
A1.04 ROOF PLAN
 SCALE: 3/64" = 1'-0"

GENERAL NOTE:
 1) FLOOR PLANS ARE PROVIDED FOR INFORMATION ONLY. ALSO, THEY ARE PRELIMINARY AND ARE SUBJECT TO CHANGE BASED ON LEASING AND ARCHITECTURAL DEVELOPMENT.

REVISIONS

#	DATE	DESCRIPTION

PRINTED: 1/5/2024 11:17:04 AM

ISSUED: 1/5/2024

SHEET TITLE:
 ROOF PLAN

SHEET NO.:

A1.04

OWNER
OX HILL COMPANIES
10523 MAIN ST. SUITE 200
FAIRFAX, VA 22030

DESIGN ARCHITECT
DAVID M. SCHWARZ ARCHITECTS, INC.
1707 L ST. NW, SUITE 400
WASHINGTON, D.C. 20036

ARCHITECT OF RECORD
PAGE SOUTHERLAND PAGE, INC.
1615 M ST. NW, SUITE 700
WASHINGTON DC 20036

CIVIL ENGINEER:
URBAN-LTD
4200 D. TECHNOLOGY COURT
CHANTILLY, VA 20151

TRAFFIC ENGINEER:
GOROVE-SLADE ASSOCIATES INC.
3914 CENTERVILLE RD. SUITE 300
CHANTILLY, VA 20151

LANDSCAPE ARCHITECT:
URBAN-LTD
4200 D. TECHNOLOGY COURT
CHANTILLY, VA 20151

STRUCTURAL ENGINEER:



MEP ENGINEER:

Design Documents have been prepared solely for the limited purpose of establishing the Project's aesthetic architectural design intent. The Design Documents shall not be used for construction, permitting, or any other use inconsistent with the limited purpose of establishing aesthetic architectural design intent. Any dimensional or technical information contained in the Design Documents is provided solely for illustrative purposes and shall not be relied upon. Any use of the Design Documents for purposes other than establishing the Project's aesthetic architectural design intent shall be at user's sole risk and without liability to the Design Architect. Further, to the extent permitted by law, any use of these Design Documents constitutes an agreement by the user to indemnify and hold harmless the Design Architect and its officers, directors, employees and consultants from all damages, liability, costs and expenses, including the cost of defense, related to claims and causes of action asserted by any third person or entity to the extent such damages, liability, costs and expenses arise from use of the Design Documents for purposes other than establishing the Project's aesthetic architectural design intent. Any use of these Design Documents for any purpose constitutes acceptance of the above terms and conditions by the user.

These drawings, specifications, and other documents, (the Documents) including electronic versions thereof and the ideas, designs and arrangements represented hereby, are and shall remain the property of David M. Schwarz Architects, Inc. as defined by applicable contractual agreements (the Agreements) and are protected by the copyright statutes of the United States. Use of the Documents shall be strictly limited to the project for which they were prepared and developed (the Project) per the terms of the Agreements. No part of the Documents shall be copied, disclosed to others, or used in connection with any other work or project, or by any other person for any other purpose, other than the completion of the Project without the specific written authorization of David M. Schwarz Architects, Inc. The downloading, opening, or viewing of electronic versions of the Documents or visual contact with any printed form thereof shall constitute conclusive evidence of acceptance of these restrictions.

1 W-E SITE SECTION
A3.00 SCALE: 1/32" = 1'-0"

REVISIONS

#	DATE	DESCRIPTION

PRINTED: 1/5/2024 11:17:06 AM

ISSUED: 1/5/2024

SHEET TITLE:
SITE SECTION

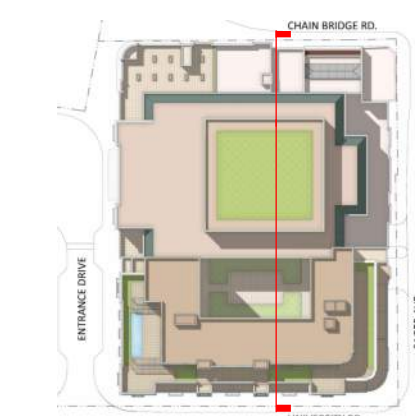
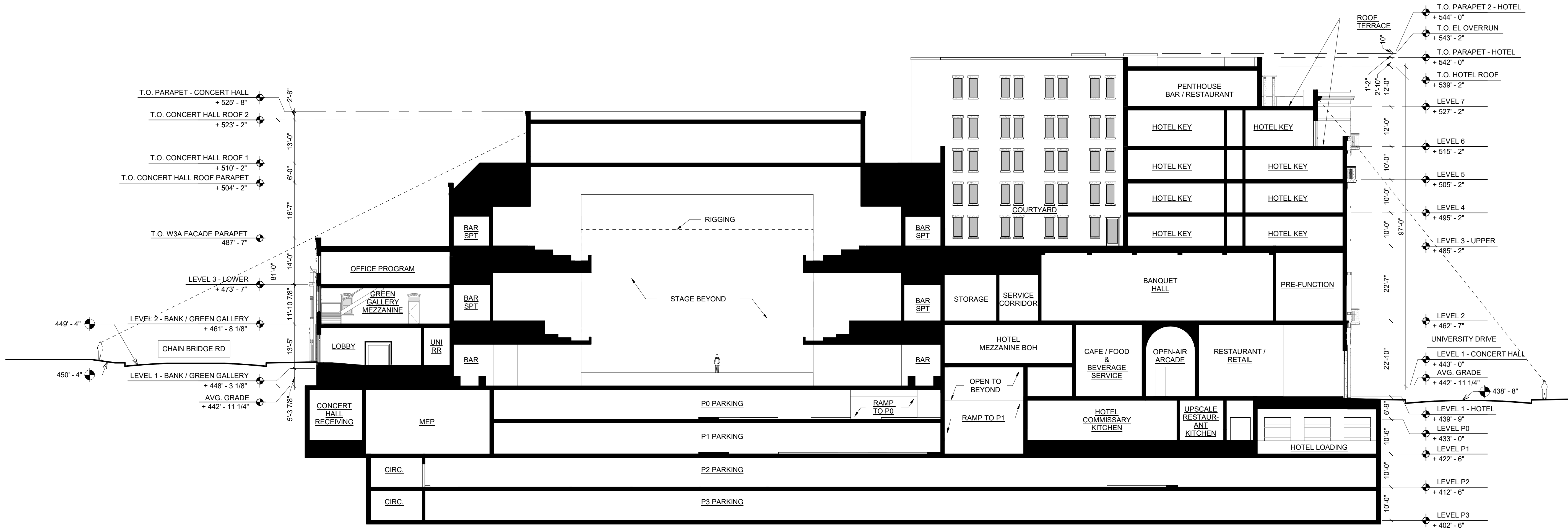
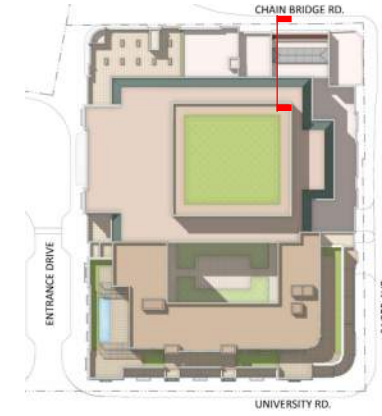
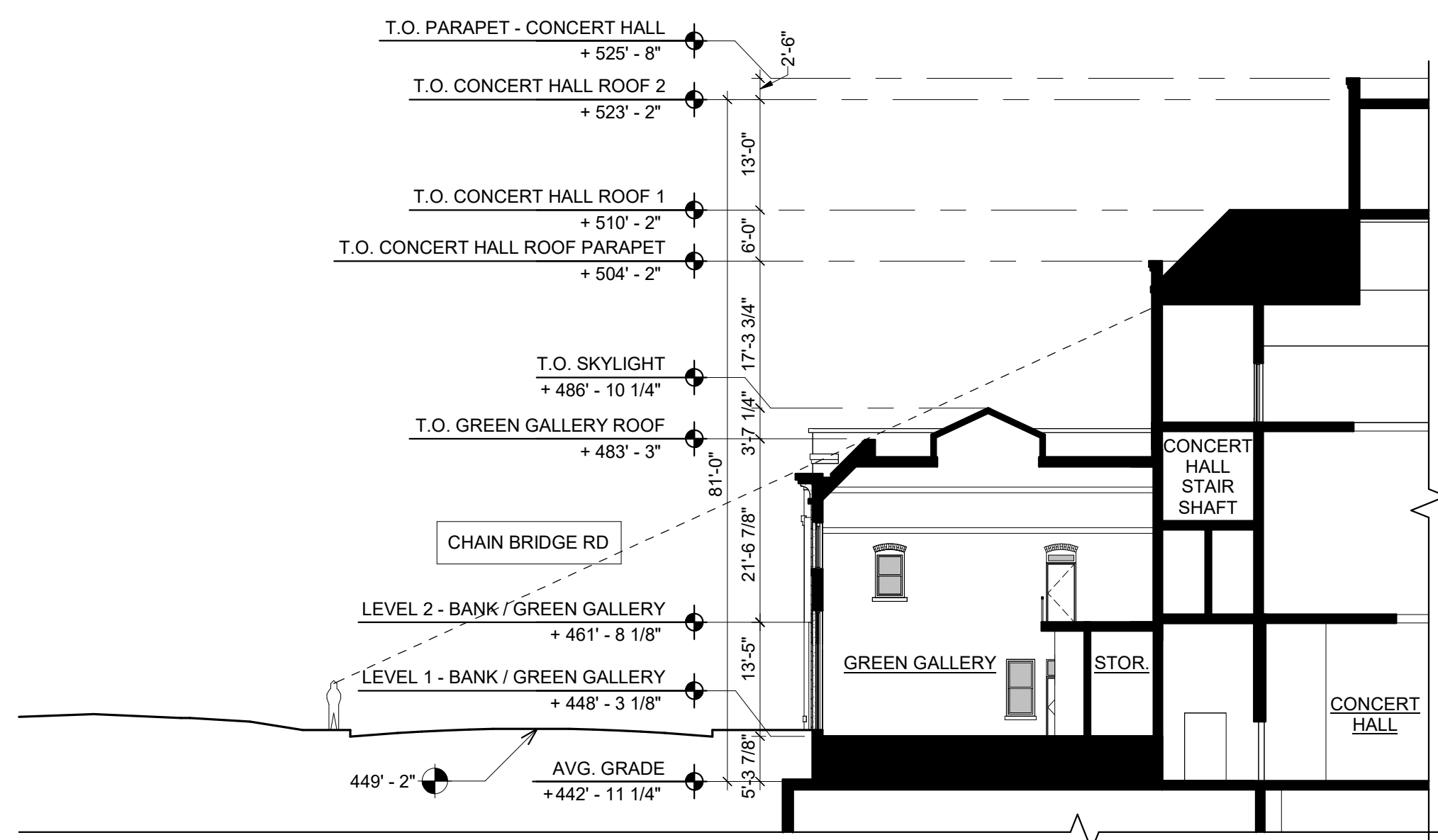
SHEET NO.:

A3.00

MEP ENGINEER:

Design Documents have been prepared solely for the limited purpose of establishing the Project's aesthetic architectural design intent. The Design Documents shall not be used for construction, permitting, or any other use inconsistent with the limited purpose of establishing aesthetic architectural design intent. Any dimensional or technical information contained in the Design Documents is provided solely for illustrative purposes and shall not be relied upon. Any use of the Design Documents for purposes other than establishing the Project's aesthetic architectural design intent shall be at user's sole risk and without liability to the Design Architect. Further, to the extent permitted by law, any use of these Design Documents constitutes an agreement by the user to indemnify and hold harmless the Design Architect and its officers, directors, employees and consultants from all damages, liability, costs and expenses, including the cost of defense, related to claims and causes of action asserted by any third person or entity to the extent such damages, liability, costs and expenses arise from use of the Design Documents for purposes other than establishing the Project's aesthetic architectural design intent. Any use of these Design Documents for any purpose constitutes acceptance of the above terms and conditions by the user.

These drawings, specifications, and other documents, (the Documents) including electronic versions thereof and the ideas, design and arrangements represented thereby, are and shall remain the property of David M. Schwarz Architects, Inc. as defined by applicable contractual agreements (the Agreement) and as protected by the copyright statutes of the United States. Use of the Documents shall be strictly limited to the project for which they were prepared and developed (the Project) per the terms of the Agreement. No part of the Documents shall be copied, disclosed to others, or used in connection with any other work or project, or by any other person for any other purpose, other than the completion of the Project without the specific written authorization of David M. Schwarz Architects, Inc. The downloading, copying, or viewing of electronic versions of the Documents or visual contact with any printed form thereof shall constitute conclusive evidence of acceptance of these restrictions.



REVISIONS

#	DATE	DESCRIPTION

PRINTED: 1/5/2024 11:17:08 AM

ISSUED: 1/5/2024

SHEET TITLE:
LONGITUDINAL SECTION

SHEET NO.:

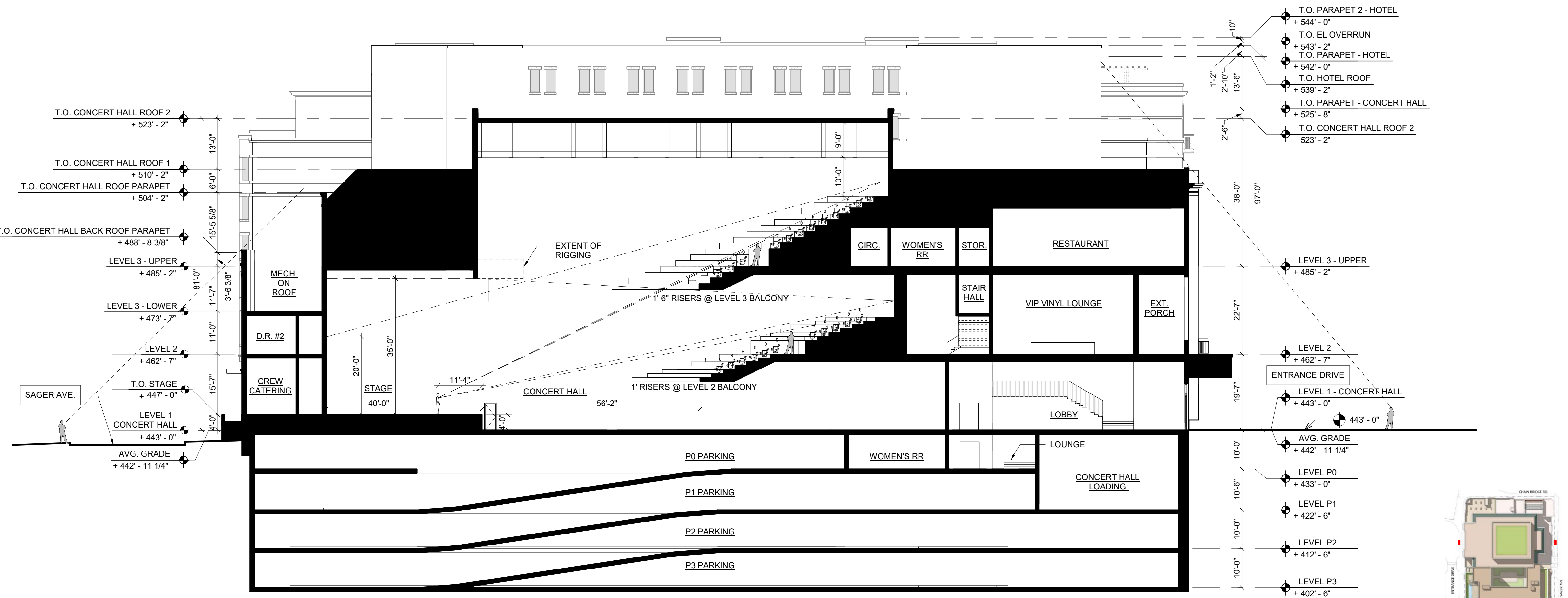
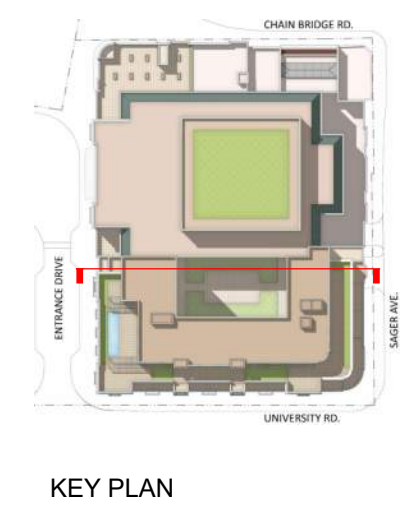
A3.01

Design Documents have been prepared solely for the limited purpose of establishing the Project's aesthetic architectural design intent. The Design Documents shall not be used for construction, permitting, or any other use inconsistent with the limited purpose of establishing aesthetic architectural design intent. Any dimensional or technical information contained in the Design Documents is provided solely for illustrative purposes and shall not be relied upon. Any use of the Design Documents for purposes other than establishing the Project's aesthetic architectural design intent shall be at user's sole risk and without liability to the Design Architect. Further, to the extent permitted by law, any use of these Design Documents constitutes an agreement by the user to indemnify and hold harmless the Design Architect and its officers, directors, employees and consultants from all damages, liability, costs and expenses, including the cost of defense, related to claims and causes of action asserted by any third person or entity to the extent such damages, liability, costs and expenses arise from use of the Design Documents for purposes other than establishing the Project's aesthetic architectural design intent. Any use of these Design Documents for any purpose constitutes acceptance of the above terms and conditions by the user.

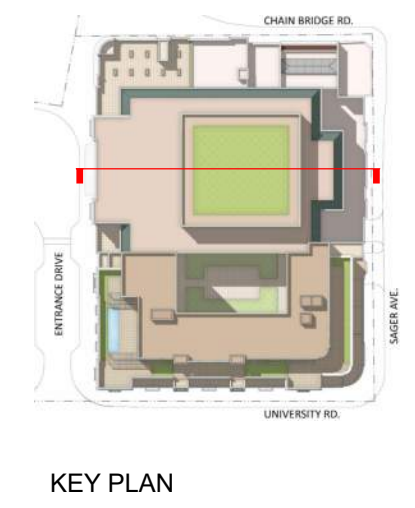
These drawings, specifications, and other documents, (the "Documents") including electronic versions thereof and the ideas, design and arrangements represented hereby, are and shall remain the property of David M. Schwarz Architects, Inc., as defined by applicable contractual agreements (the "Agreement") and as protected by the copyright statutes of the United States. Use of the Documents shall be strictly limited to the project for which they were prepared and developed. (The Project) per the terms of the Agreement. No part of the Documents shall be copied, disclosed to others, or used in connection with any other work or project, or by any other person for any other purpose, other than the completion of the Project without the specific written authorization of David M. Schwarz Architects, Inc. The downloading, copying, or viewing of electronic versions of the Documents or visual contact with any printed form thereof shall constitute conclusive evidence of acceptance of these restrictions.



2 TRANSVERSE SECTION B
SCALE: 1/16" = 1'-0"



1 TRANSVERSE SECTION A
SCALE: 1/16" = 1'-0"



REVISIONS

#	DATE	DESCRIPTION

PRINTED: 1/5/2024 11:17:11 AM

ISSUED: 1/5/2024

SHEET TITLE:
TRANSVERSE SECTIONS

SHEET NO.:

A3.02

OWNER:
 OX HILL COMPANIES
 10523 MAIN ST. SUITE 200
 FAIRFAX, VA 22030

DESIGN ARCHITECT:
 DAVID M. SCHWARZ ARCHITECTS, INC.
 1707 L ST. NW, SUITE 400
 WASHINGTON, D.C. 20036

ARCHITECT OF RECORD:
 PAGE SOUTHERLAND PAGE, INC.
 1615 M ST. NW, SUITE 700
 WASHINGTON DC 20036

CIVIL ENGINEER:
 URBAN-LTD
 4200 D. TECHNOLOGY COURT
 CHANTILLY, VA 20151

TRAFFIC ENGINEER:
 GOROVE-SLADE ASSOCIATES INC.
 3914 CENTERVILLE RD. SUITE 300
 CHANTILLY, VA 20151

LANDSCAPE ARCHITECT:
 URBAN-LTD
 4200 D. TECHNOLOGY COURT
 CHANTILLY, VA 20151

STRUCTURAL ENGINEER:

MEP ENGINEER:

Design Documents have been prepared solely for the limited purpose of establishing the Project's aesthetic architectural design intent. The Design Documents shall not be used for construction, permitting, or any other use inconsistent with the limited purpose of establishing aesthetic architectural design intent. Any dimensional or technical information contained in the Design Documents is provided solely for illustrative purposes and shall not be relied upon. Any use of the Project's aesthetic architectural design intent shall be at user's sole risk and without liability to the Design Architect. Further, to the extent permitted by law, any use of these Design Documents constitutes an agreement by the user to indemnify and hold harmless the Design Architect and its officers, directors, employees and consultants from all damages, liability, costs and expenses, including the cost of defense, related to claims and causes of action asserted by any third person or entity to the extent such damages, liability, costs and expenses arise from use of the Design Documents for purposes other than establishing the Project's aesthetic architectural design intent. Any use of these Design Documents for any purpose constitutes acceptance of the above terms and conditions by the user.

These drawings, specifications, and other documents, (the "Documents") including electronic versions thereof and the design and arrangements represented thereby, are and shall remain the property of David M. Schwarz Architects, Inc. as defined by applicable contractual agreements (the "Agreement") and as protected by the copyright statutes of the United States. Use of the Documents shall be strictly limited to the project for which they were prepared and developed. (The Project) per the terms of the Agreement. No part of the Documents shall be copied, disclosed to others, or used in connection with any other work or project, or by any other person for any other purpose, other than the completion of the Project without the specific written authorization of David M. Schwarz Architects, Inc. The downloading, printing, or viewing of electronic versions of the Documents or visual contact with any printed form thereof shall constitute conclusive evidence of acceptance of these restrictions.

REVISIONS

#	DATE	DESCRIPTION

PRINTED: 1/5/2024 11:57:39 AM

ISSUED: 1/5/2024

SHEET TITLE:
 Existing and Surrounding Structures Building Heights - NW Axonometric View

SHEET NO.:

A5.00



1 Existing and Surrounding Structures Building Heights - NW Axonometric View
 A5.00 SCALE:

Design Documents have been prepared solely for the limited purpose of establishing the Project's aesthetic architectural design intent. The Design Documents shall not be used for construction, permitting, or any other use inconsistent with the limited purpose of establishing aesthetic architectural design intent. Any dimensional or technical information contained in the Design Documents is provided solely for illustrative purposes and shall not be relied upon. Any use of the Project's aesthetic architectural design intent shall be at user's sole risk and without liability to the Design Architect. Further, to the extent permitted by law, any use of these Design Documents constitutes an agreement by the user to indemnify and hold harmless the Design Architect and its officers, directors, employees and consultants from all damages, liability, costs and expenses, including the cost of defense, related to claims and causes of action asserted by any third person or entity to the extent such damages, liability, costs and expenses arise from use of the Design Documents for purposes other than establishing the Project's aesthetic architectural design intent. Any use of these Design Documents for any purpose constitutes acceptance of the above terms and conditions by the user.

These drawings, specifications, and other documents, (the "Documents") including electronic versions thereof and the ideas, design and arrangements represented thereby, are and shall remain the property of David M. Schwarz Architects, Inc. as defined by applicable contractual agreements (the "Agreement") and as protected by the copyright statutes of the United States. Use of the Documents shall be strictly limited to the project for which they were prepared and developed. (The Project) per the terms of the Agreement. No part of the Documents shall be copied, disclosed to others, or used in connection with any other work or project, or by any other person for any other purpose, other than the completion of the Project without the specific written authorization of David M. Schwarz Architects, Inc. The downloading, copying, or viewing of electronic versions of the Documents or visual contact with any printed form thereof shall constitute conclusive evidence of acceptance of these restrictions.

REVISIONS

#	DATE	DESCRIPTION

PRINTED: 1/5/2024 11:50:39 AM

ISSUED: 1/5/2024

SHEET TITLE:
EXTERIOR NORTH & EAST ELEVATIONS - COLOR

SHEET NO.:

A5.01

MATERIAL KEY LEGEND

BR1	Brick - Type 1
BR2	Brick - Type 2
BR3	Brick - Type 3
BR4	Brick - Type 4
BR5	Brick - Type 5
BR6	Brick - Type 6
CS1	Cast Stone - Type 1*
CS2	Cast Stone - Type 2*
CS3	Cast Stone - Type 3*
DR1	Overhead Ceiling Mtl. Door Type 1
DR2	Overhead Ceiling Mtl. Door Type 2
DR3	Decorative Metal Gate
GL1	Glazing
GL2	Metal and Glass Skylight
MCP1	Metal Canopy - Type 1
MCP2	Metal Canopy - Type 2
MCP3	Metal Canopy - Type 3
MCP4	Metal Canopy - Type 4
MT1	Decorative Metal - Type 1
MT2	Decorative Metal - Type 2
MT3	Decorative Metal - Type 3
MT4	Decorative Metal - Type 4
MT5	Decorative Metal - Railing
RF1	Metal Roof - Standing Seam
RF2	Roof - Clay Tile
SC1	Stucco
ST1	Granite Base - Type 1
ST2	Granite Base - Type 2
ST3	Granite Base - Type 3
ST4	Granite Base - Type 4
ST5	Granite Base - Type 5
WN1A	Window - Type 1A
WN1B	Window - Type 1B
WN2	Window - Type 2
WN3	Window - Type 3
WN4	Window - Type 4
WN5	Window - Type 5

*Cast Stone or GFRC T.B.D.



1 EXTERIOR EAST ELEVATION
SCALE: 1/16" = 1'-0"



2 EXTERIOR NORTH ELEVATION
SCALE: 1/16" = 1'-0"

MATERIAL KEY LEGEND

BR1	Brick - Type 1
BR2	Brick - Type 2
BR3	Brick - Type 3
BR4	Brick - Type 4
BR5	Brick - Type 5
BR6	Brick - Type 6
CS1	Cast Stone - Type 1*
CS2	Cast Stone - Type 2*
CS3	Cast Stone - Type 3*
DR1	Overhead Ceiling Mt. Door Type 1
DR2	Overhead Ceiling Mt. Door Type 2
DR3	Decorative Metal Gate
GL1	Glazing
GL2	Metal and Glass Skylight
MCP1	Metal Canopy - Type 1
MCP2	Metal Canopy - Type 2
MCP3	Metal Canopy - Type 3
MCP4	Metal Canopy - Type 4
MT1	Decorative Metal - Type 1
MT2	Decorative Metal - Type 2
MT3	Decorative Metal - Type 3
MT4	Decorative Metal - Type 4
MT5	Decorative Metal - Railing
RF1	Metal Roof - Standing Seam
RF2	Roof - Clay Tile
SC1	Stucco
ST1	Granite Base - Type 1
ST2	Granite Base - Type 2
ST3	Granite Base - Type 3
ST4	Granite Base - Type 4
ST5	Granite Base - Type 5
WN1A	Window - Type 1A
WN1B	Window - Type 1B
WN2	Window - Type 2
WN3	Window - Type 3
WN4	Window - Type 4
WN5	Window - Type 5

*Cast Stone or GFRC T.B.D.



DAVID M. SCHWARZ ARCHITECTS

**THE OX FAIRFAX
BLOCK A**

DMSAS PROJECT #: P2102

OWNER

OX HILL COMPANIES
1707 L ST. NW, SUITE 200
FAIRFAX, VA 22030

DESIGN ARCHITECT

DAVID M. SCHWARZ ARCHITECTS, INC.
1707 L ST. NW, SUITE 400
WASHINGTON, D.C. 20036

ARCHITECT OF RECORD

PAGE SOUTHERLAND PAGE, INC.
1615 M ST. NW, SUITE 700
WASHINGTON DC 20036

CIVIL ENGINEER:

URBAN-LTD
4200 D. TECHNOLOGY COURT
CHANTILLY, VA 20151

TRAFFIC ENGINEER:

GOROVE-SLADE ASSOCIATES INC.
3914 CENTERVILLE RD. SUITE 300
CHANTILLY, VA 20151

LANDSCAPE ARCHITECT:

URBAN-LTD
4200 D. TECHNOLOGY COURT
CHANTILLY, VA 20151

STRUCTURAL ENGINEER:

URBAN-LTD
4200 D. TECHNOLOGY COURT
CHANTILLY, VA 20151

MEP ENGINEER:

Design Documents have been prepared solely for the limited purpose of establishing the Project's aesthetic architectural design intent. The Design Documents shall not be used for construction, permitting, or any other use inconsistent with the limited purpose of establishing aesthetic architectural design intent. Any dimensional or technical information contained in the Design Documents is provided solely for illustrative purposes and shall not be relied upon. Any use of the Project's aesthetic architectural design intent shall be at user's sole risk and without liability to the Design Architect. Further, to the extent permitted by law, any use of these Design Documents constitutes an agreement by the user to indemnify and hold harmless the Design Architect and its officers, directors, employees and consultants from all damages, liability, costs and expenses, including the cost of defense, related to claims and causes of action asserted by any third person or entity to the extent such damages, liability, costs and expenses arise from use of the Design Documents for purposes other than establishing the Project's aesthetic architectural design intent. Any use of these Design Documents for any purpose constitutes acceptance of the above terms and conditions by the user.

These drawings, specifications, and other documents, (the "Documents") including electronic versions thereof and the design and arrangements represented thereby, are and shall remain the property of David M. Schwarz Architects, Inc. as defined by applicable contractual agreements (the "Agreement") and as protected by the copyright statutes of the United States. Use of the Documents shall be strictly limited to the project for which they were prepared and developed. (The Project) per the terms of the Agreement. No part of the Documents shall be copied, disclosed to others, or used in connection with any other work or project, or by any other person for any other purpose, other than the completion of the Project without the specific written authorization of David M. Schwarz Architects, Inc. The downloading, copying, or viewing of electronic versions of the Documents or visual contact with any printed form thereof shall constitute conclusive evidence of acceptance of these restrictions.

REVISIONS

#	DATE	DESCRIPTION

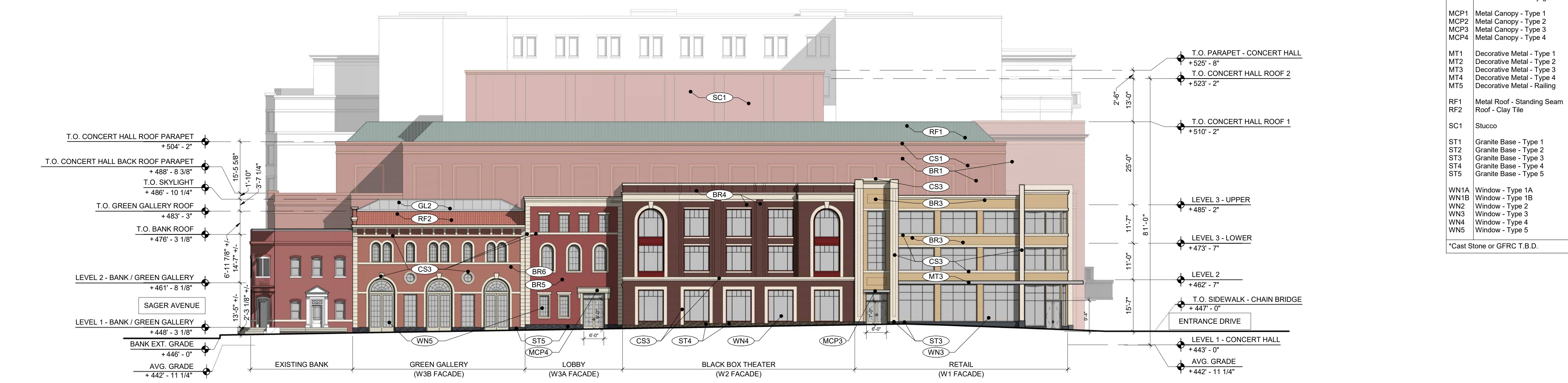
PRINTED: 1/5/2024 11:51:27 AM

ISSUED: 1/5/2024

SHEET TITLE:
EXTERIOR SOUTH & WEST ELEVATIONS - COLOR

SHEET NO.:

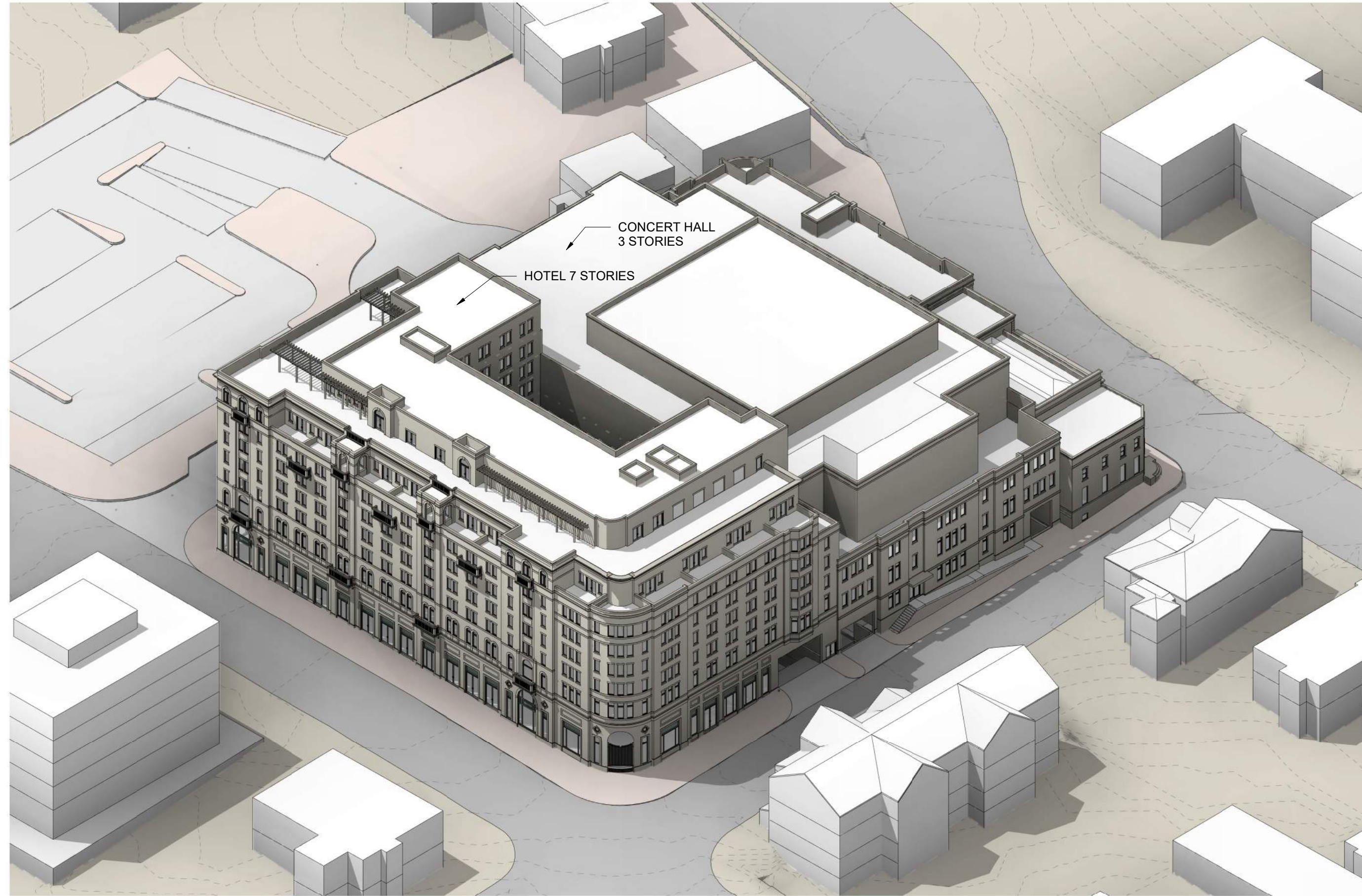
A5.02



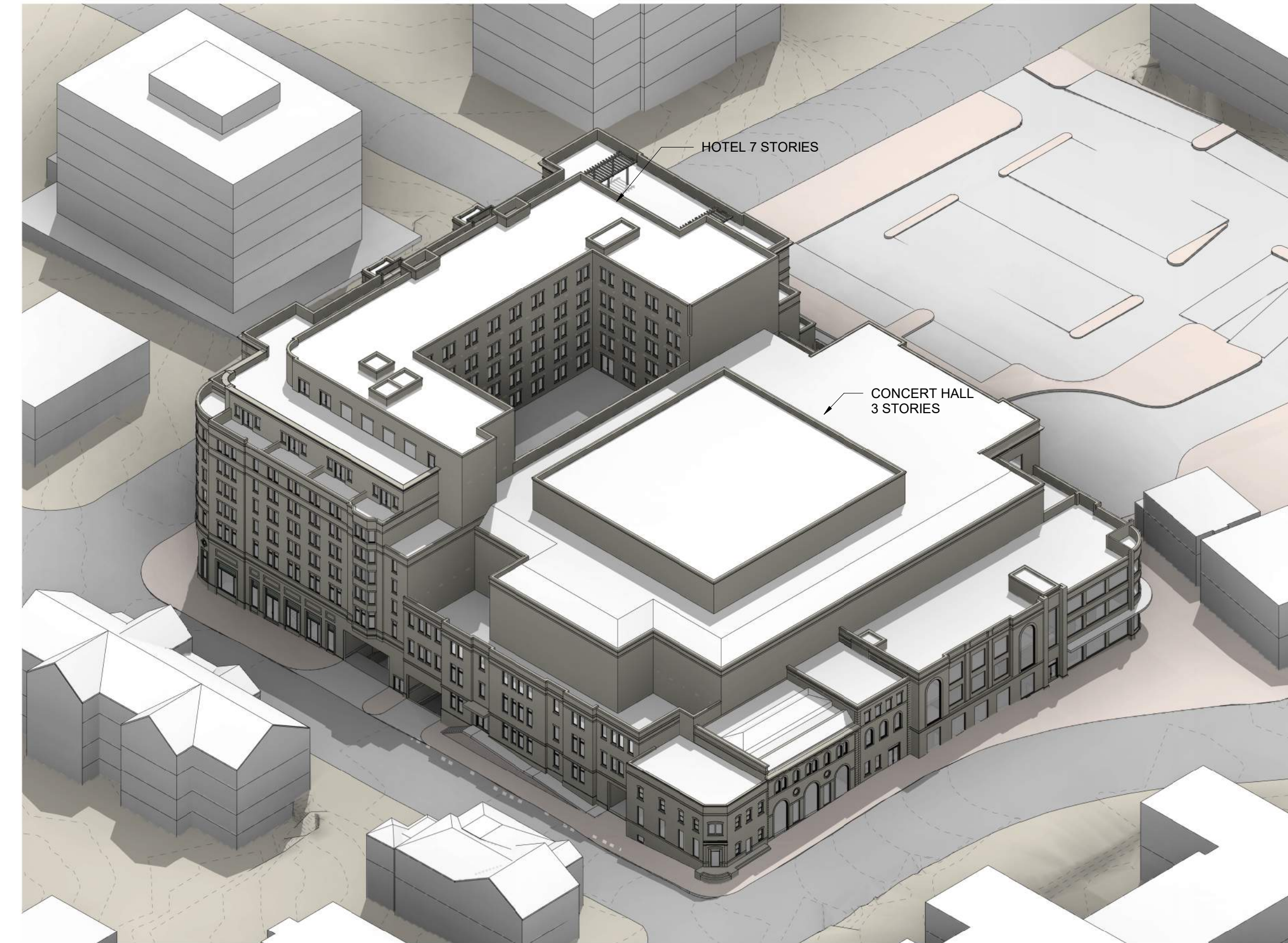
2 EXTERIOR WEST ELEVATION
SCALE: 1/16" = 1'-0"



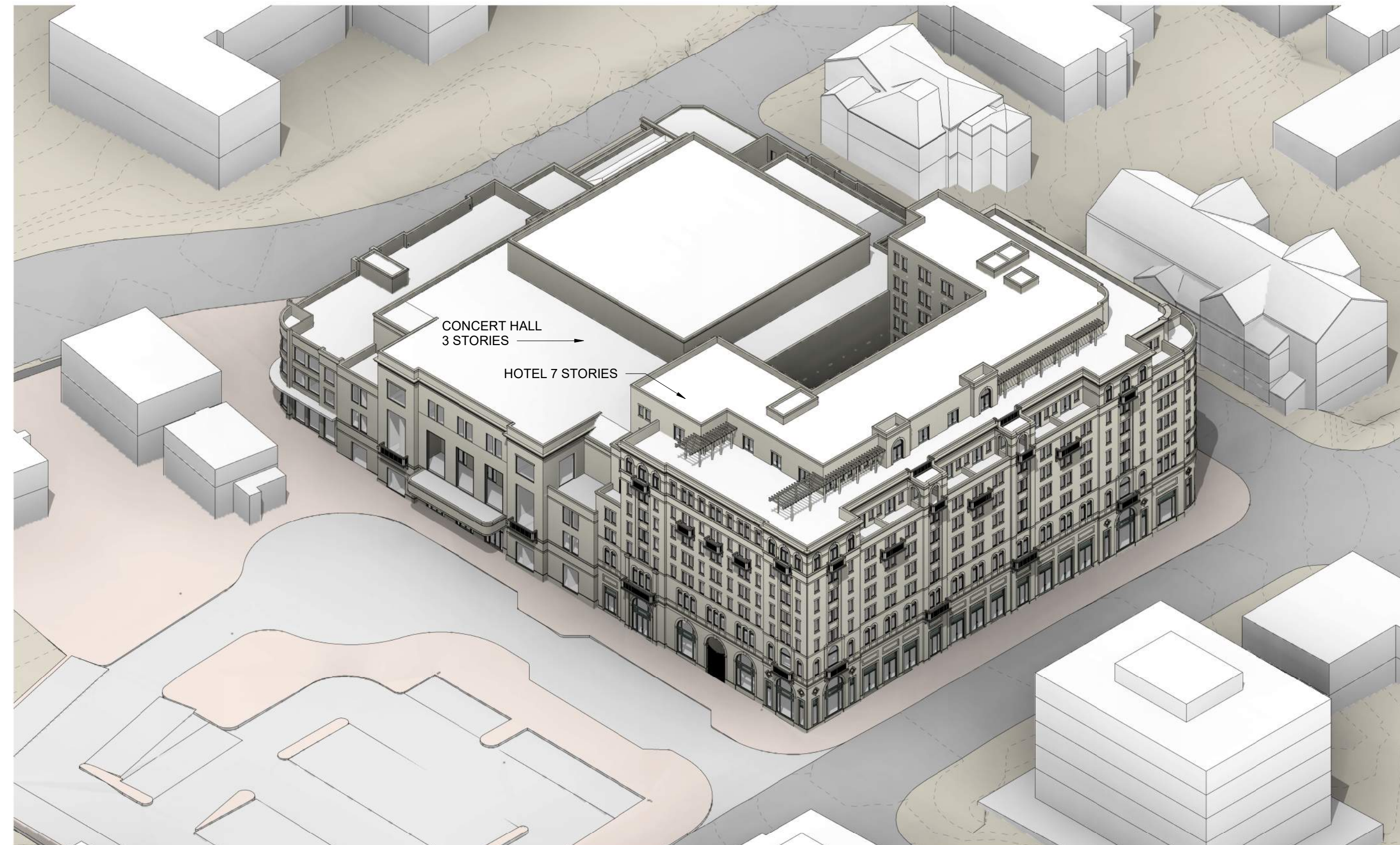
1 EXTERIOR SOUTH ELEVATION
SCALE: 1/16" = 1'-0"



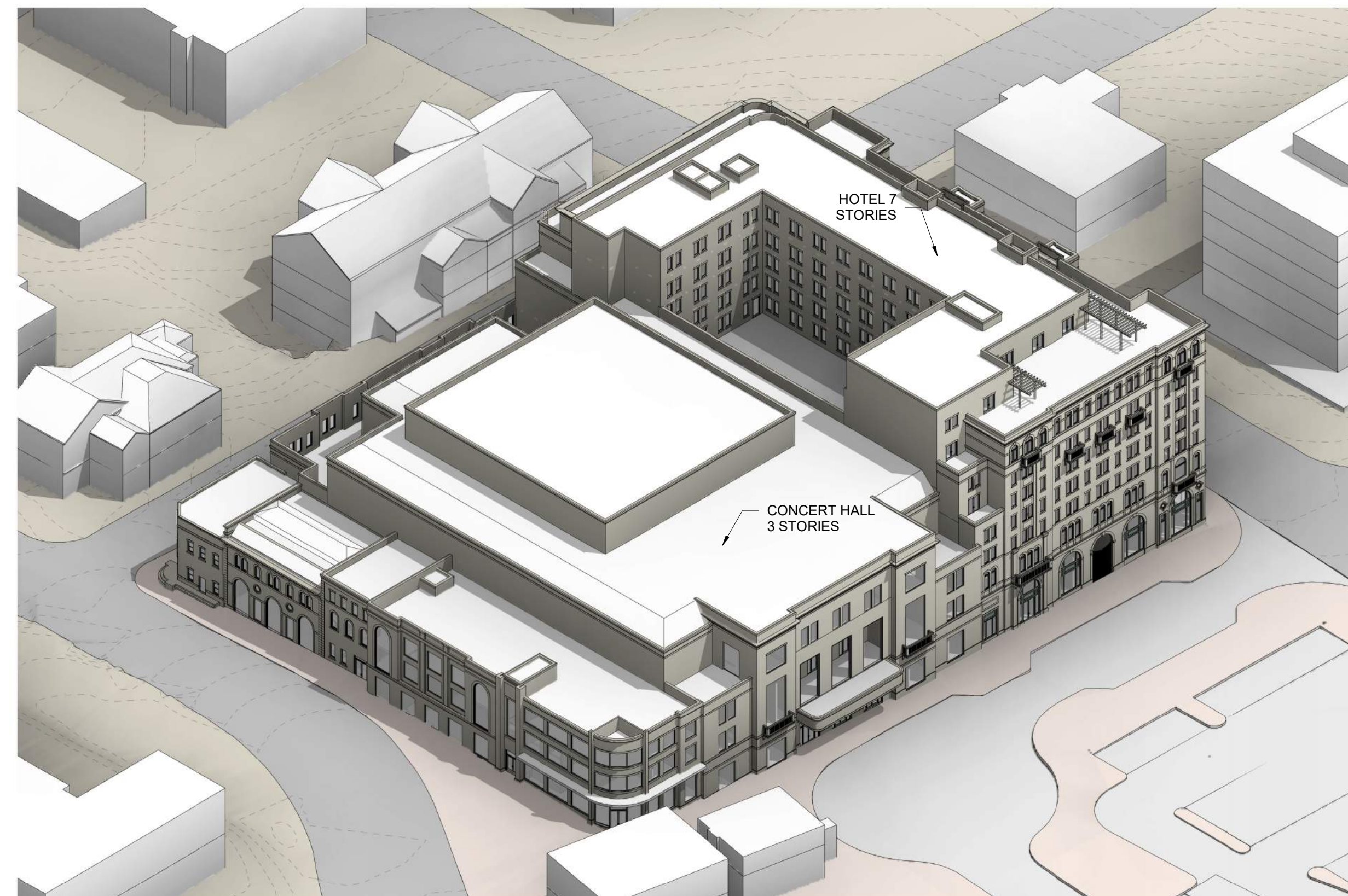
4 3D VIEW FROM NE
A10.01 SCALE:



2 3D VIEW FROM NW
A10.01 SCALE:



3 3D VIEW FROM SE
A10.01 SCALE:



1 3D VIEW FROM SW
A10.01 SCALE:

Design Documents have been prepared solely for the limited purpose of establishing the Project's aesthetic architectural design intent. The Design Documents shall not be used for construction, permitting, or any other use inconsistent with the limited purpose of establishing aesthetic architectural design intent. Any dimensional or technical information contained in the Design Documents is provided solely for illustrative purposes and shall not be relied upon. Any use of the Project's aesthetic architectural design intent shall be at user's sole risk and without liability to the Design Architect. Further, to the extent permitted by law, any use of these Design Documents constitutes an agreement by the user to indemnify and hold harmless the Design Architect and its officers, directors, employees and consultants from all damages, liability, costs and expenses, including the cost of defense, related to claims and causes of action asserted by any third person or entity to the extent such damages, liability, costs and expenses arise from use of the Design Documents for purposes other than establishing the Project's aesthetic architectural design intent. Any use of these Design Documents for any purpose constitutes acceptance of the above terms and conditions by the user.

These drawings, specifications, and other documents, (the "Documents") including electronic versions thereof and the design and arrangements represented hereby, are and shall remain the property of David M. Schwarz Architects, Inc. as defined by applicable contractual agreements (the "Agreement") and as protected by the copyright statutes of the United States. Use of the Documents shall be strictly limited to the project for which they were prepared and developed. (The Project) per the terms of the Agreement. No part of the Documents shall be copied, disclosed to others, or used in connection with any other work or project, or by any other person for any other purpose, other than the completion of the Project without the specific written authorization of David M. Schwarz Architects, Inc. The downloading, printing, or viewing of electronic versions of the Documents or visual contact with any printed form thereof shall constitute conclusive evidence of acceptance of these restrictions.

REVISIONS

#	DATE	DESCRIPTION

PRINTED: 1/5/2024 11:23:46 AM

ISSUED: 1/5/2024

SHEET TITLE:
AXON VIEWS

SHEET NO.:

A10.01