



Strategic Master Planning Process

*for City Parks, Recreation, Trails, Open Space, Events
and Cultural Activities*

Public Workshop #4: Facilities

Outdoor Spaces & the Future of Van Dyck Park

Sunday June 23, 2013 – 1:00 p.m. to 3:00p.m.



Agenda

- Welcome and Overview
- Inventory of Current Programs & Facilities
- Summary of Community Input Received To-Date
- Priority Programs & Services – Recreation Center, Senior Center, Indoor/Outdoor Aquatics
- Decision Making Criteria
- Future of Van Dyck Park
- Wrap-Up

Meeting Purpose and Outcomes

Collect more detailed community input on park and recreation facilities

- Identify **priority facilities and programs** offered in outdoor parks.
- Identify **decision making criteria** for determining where and how facilities are provided
- Generate specific ideas for the future of **Van Dyck Park**

What is the Strategic Plan?

- **What is it?**

A clear, concise and measurable set of goals, policies and objectives

- **For what purpose?**

To provide direction to the City Council, Staff, Parks and Recreation Advisory Board and Commission on the Arts

- **How will it be used?**

To inform decision making related to the future development, redevelopment and enhancement of the City's parks system, open space, recreation facilities, activities, events and services.

What will it include?

Development of a comprehensive **inventory**, an **analysis** of current and forecasted **needs** and **implementation** strategies

- Parks System, Open Space and Trails
- Recreation Facilities
- Recreational/Cultural Activities, Events and Services
- Capital Development
- Costs and Funding Sources

Why are we doing this now?

- Significant change in our City...our residents...our users' needs...the ways people recreate...and the requirements and impact to our natural environment
- Economic conditions forced deferral of capital maintenance and replacement...built up needs require comprehensive and objective evaluation

Strategic Plan will help identify trends and needs in the community and how we will meet them

What is the scope of this plan?

Two Phase Approach

- Phase I: Strategic Vision
 - ENGAGE the community in a variety of interactive public participation processes
 - Identify WHAT citizens and City Council want and will support
 - Establish clear and concise VISION, GOALS and OBJECTIVES
- Phase II: Strategic Action Plan
 - Action steps to answer WHO, WHERE, WHEN and HOW to implement the Vision

What are the Phase I deliverables?

- 4 public workshops
- 20 stakeholder meetings
- 3 reports
- Online civic engagement
- Statistically valid survey
- Preliminary park classification definitions
- Preliminary levels of service

Who is involved?

- Bottom line...EVERYONE in the community
- Led by PRAB and staff...advised by Steering Committee sounding board...facilitated by professional planning consultants
- Community-wide input process – residents, “users,” participants, business, special interest groups...etc.
- Partners – George Mason University, Fairfax County Park Authority, Northern Virginia Regional Park Authority

Current Inventory – Outdoor Parks

Park Type	Size Range	Fairfax Acres
Mini-Park	>1 acre	1.5 acres
Neighborhood Park	1-10 acres	17.9 acres
Community Park	5-20 acres	133.2 acres
Regional Park	100+ acres	0.1 acre
Natural Resource Area		51.4 acres
Linear Parks / Greenways		35.2 acres
Total		239.2 acres



Current Inventory – Outdoor Parks

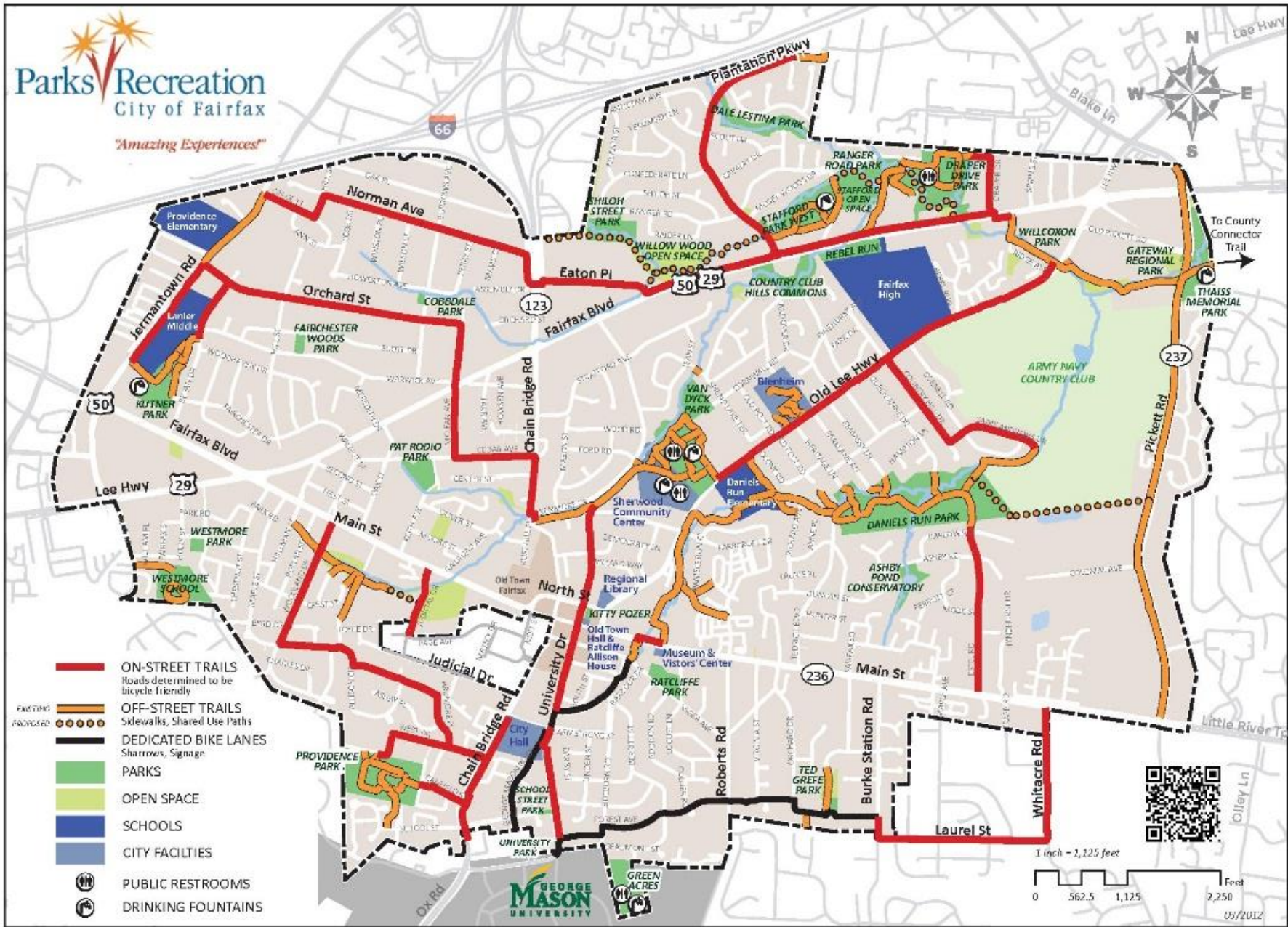
Vest Pocket/ Mini-Parks	Neighborhood Parks	Community Parks
<ul style="list-style-type: none">▪ Cobbdale Park▪ Fairchester Woods Park▪ Kitty Pozer Garden▪ School Street Park▪ University Park▪ Veterans Amphitheater▪ Westmore Park	<ul style="list-style-type: none">▪ Dale Lestina Park▪ Kutner Park▪ Pat Rodio Park▪ Ratcliffe Park▪ Shiloh Street Park	<ul style="list-style-type: none">▪ Daniels Run Park▪ Draper Drive Park▪ Green Acres▪ Providence Park▪ Ranger Road Park▪ Stafford Drive Park▪ Thaiss Memorial Park▪ Van Dyck Park▪ Westmore School Site



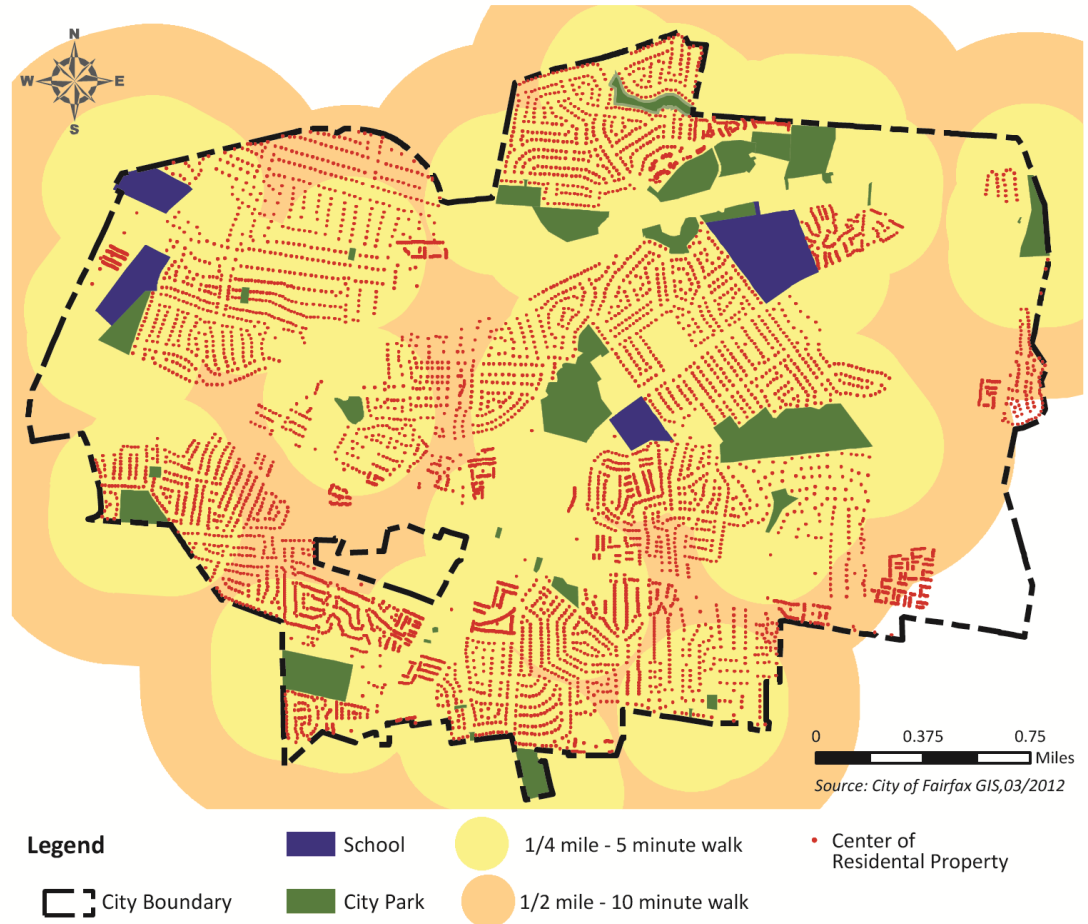
Current Inventory – Outdoor Parks

	Natural Resource Area	Undeveloped Open Space
	<ul style="list-style-type: none"> ▪ Ashby Pond Conservatory ▪ Daniels Run Park 	<ul style="list-style-type: none"> ▪ Stafford East ▪ Ted Grefe
School Parks	Nearby County Parks	Linear Parks / Greenways
<ul style="list-style-type: none"> ▪ Fairfax High School ▪ Lanier Middle ▪ Providence Elementary ▪ Daniels Run Elementary 	<ul style="list-style-type: none"> ▪ Annandale Park ▪ Braddock Park ▪ Burke Lake Park ▪ Royal Lake Park ▪ Oak Marr ▪ Wakefield Park 	<ul style="list-style-type: none"> ▪ Wilcoxon Park ▪ Willow Wood Open Space ▪ Sager Trail ▪ School Street Park ▪ Stafford Open Space ▪ Rebel Run ▪ Country Club Hills commons





82% of residents are within ¼ mile or 5 minute walk from a park or school.



Summary of Input Received

Input received through public workshops, stakeholder meetings, and Our Parks Our Future.com

- Outdoor Facilities
 - Athletics
 - Track and field (at Lanier)
 - More rectangular fields
 - More synthetic turf fields
 - Tented tennis courts
 - Providence as premier baseball complex
 - Improve/upgrade diamond fields
 - Green infrastructure
 - Invasive plant management
 - Storm water management
 - Vernal pools
 - Solar lights/electricity at shelters
 - Add recycling stations
 - Edible landscaping
 - Use recycled benches & trash receptacles
 - Native landscaping and displays

Summary of Input Received

Input received through public workshops, stakeholder meetings, and Our Parks Our Future.com

- Outdoor Facilities
 - New facilities
 - Dog park
 - More trails
 - Splash pads
 - STEM teen playground
 - Downtown central park
 - Amphitheater
 - Park in SE Fairfax
 - Pocket parks
 - Meditation space
 - Community gardens
 - Picnic pavilions
 - Fitness trails
 - Mini-golf
 - Large all access playground
 - Playgrounds near all athletic fields
 - Monarch Butterfly way stations
 - Fishing ponds
 - Arboretum/botanical garden
 - Aquatic center/pool

Summary of Input Received

Input received through public workshops, stakeholder meetings, and Our Parks, Our Future

- Outdoor Facilities
 - Improve parks
 - Shade at all parks
 - Better bathrooms
 - Parking at Thaiss
 - Better handicapped access
 - Expand skate park
 - Replace picnic tables and grills
 - More to do at Pat Rodio Park
 - Ashby Pond less stinky
- More funds for maintenance
- More parking at Kutner
- Upgrade ballfields

Public Workshop Priorities

- Voting with Dollars - \$1,000 each participant

Develop new or improved senior center facilities -	\$16,200
Improvements/maintenance of existing parks, playgrounds, game courts and picnic areas -	\$15,000
Development of a new outdoor family aquatic center -	\$13,000
Development of new walking and biking trails -	\$10,800
Improvements/construction of new athletic fields -	\$10,000
Development of new indoor recreation facilities -	\$8,400
Acquisition of land for open space/green space/future park land	\$7,850
Development of new outdoor Parks and Recreation Facilities -	\$5,550

Public Workshop Priorities

- Voting with Dollars - \$1,000 each participant

Other:

Bigger skate park -	\$2,150	Swings for adults -	\$150
Roller/hockey rink -	\$1,000	Nature Center -	\$150
Dog park -	\$1,000	Golf facility -	\$100
Blank -	\$850	Cultural events at	
Festival center -	\$450	Sherwood -	\$100
Edible landscape -	\$450	Good dance floors -	\$100
Community garden -	\$400	Control Invasive plants -	\$50
Programming -	\$350	Sidewalks -	\$50
Improve parking/access		I-66 Overpass -	\$50
to Thaiss Field -	\$200	Asphalt track -	\$50
More tennis courts -	\$200	Space for arts/City Band	
		office -	\$50

Decision Making Criteria

When planning for investments related to parks and recreation facilities, what decision making criteria should the City use?

Examples:

- How many of each park type should the City provide?
- What facilities should be in each park type?
- How long should the travel distance be to a park?
- How much time should it take to get to a park?

Priority Facilities and Services

Prepare a plan based upon your vision for the future of Van Dyck Park.



Van Dyck Park– Future Use

What are your ideas for the best use and future of Van Dyck Park?

- Soundproof and/or upgrade the skate park
- Better bathroom
- Accessible nature areas
- Real bike paths to the park
- Master Plan as a contemporary urban park
- Balance of active use and natural areas
- Dog park
- Improve tennis courts, lights
- Light volleyball courts
- Maintenance of wooded area
- Variable height basketball goals
- Ice rink
- Improve grasslands and forest
- Remove fit-trail stations
- Splash pad
- Food trucks

Van Dyck Park



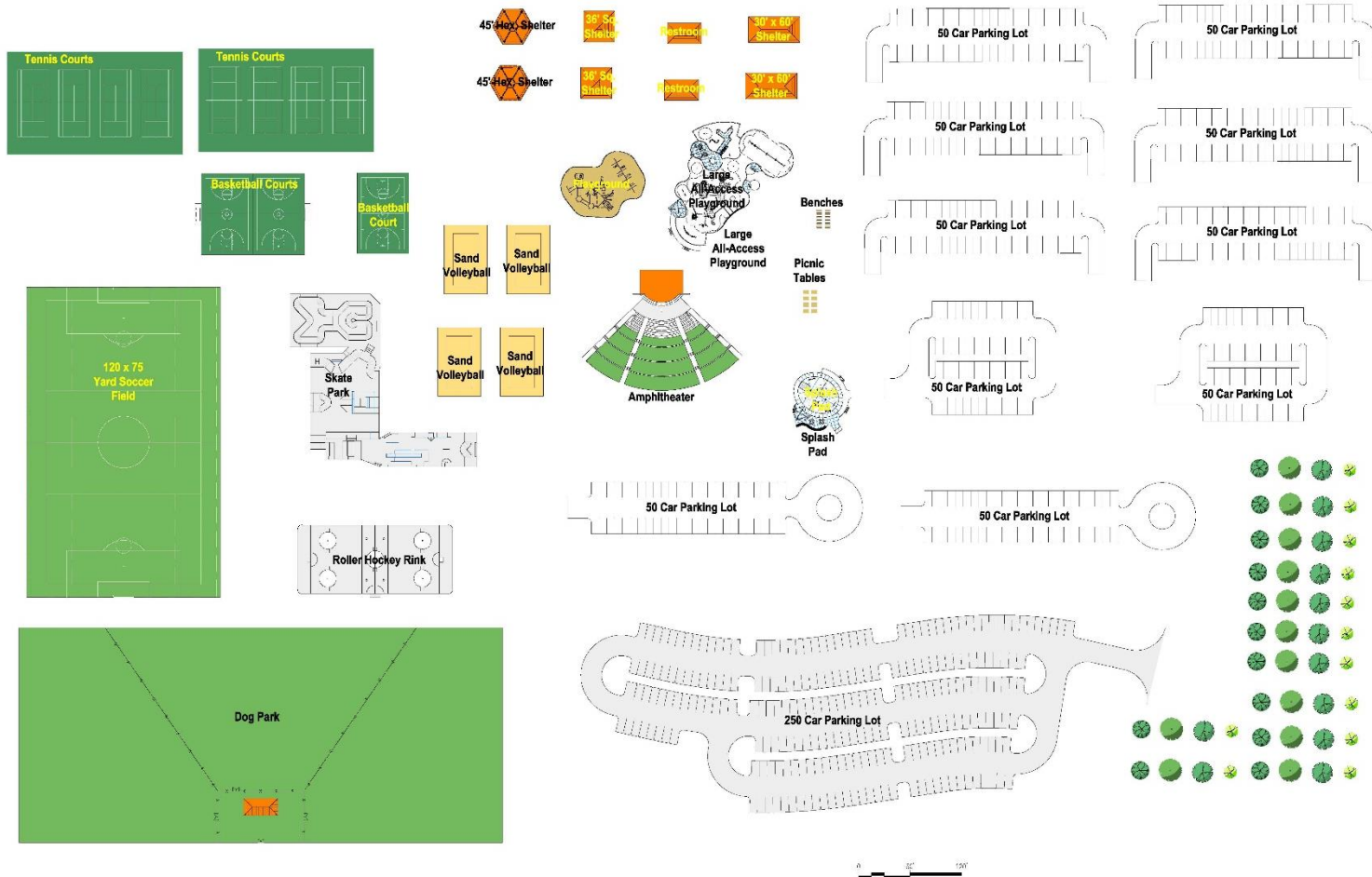
Van Dyck Park



VAN DYCK PARK



Templates




0 50 100


WESTMORE SCHOOL



1 Inch = 30 feet



0 30 60 90 120 Feet



Source: 2014 Orthophoto imagery for GIS 2118 (webglon).
Prepared by Community Development and Planning Department, June 2025



Phase I Timeline

	Mar	Apr	May	Jun	Jul	Aug	Sep	Oct
Steering Committee Meetings	3/20		★		★		★	
Mind Mixer Kick Off		4/1						
Public Workshops			5/2-3	6/22-23				
Prior Studies, Demographic, Inventory, and Trends								
Stakeholder Meetings			May	June				
Needs Assessment Survey			May	June	July			
Public Workshop						Aug		
Mission, Vision, Goals, Objectives						Aug		
Final Presentations							Sep	
Ongoing Public Review Comments								

Closing Thoughts/Comments