

# **Burke Station Road and Roberts Road Pedestrian and Roadway Improvements**

**City Council Work Session  
September 2, 2014**



**Bowman**  
CONSULTING

# Burke Station Road

## Project location:

- Burke Station Road between Main Street and Stoughton Road
- 1,100 linear feet



# Burke Station Road Existing Conditions

Existing Condition at North End



Narrow Street Section



# Burke Station Road Existing Conditions

Existing Condition at South end



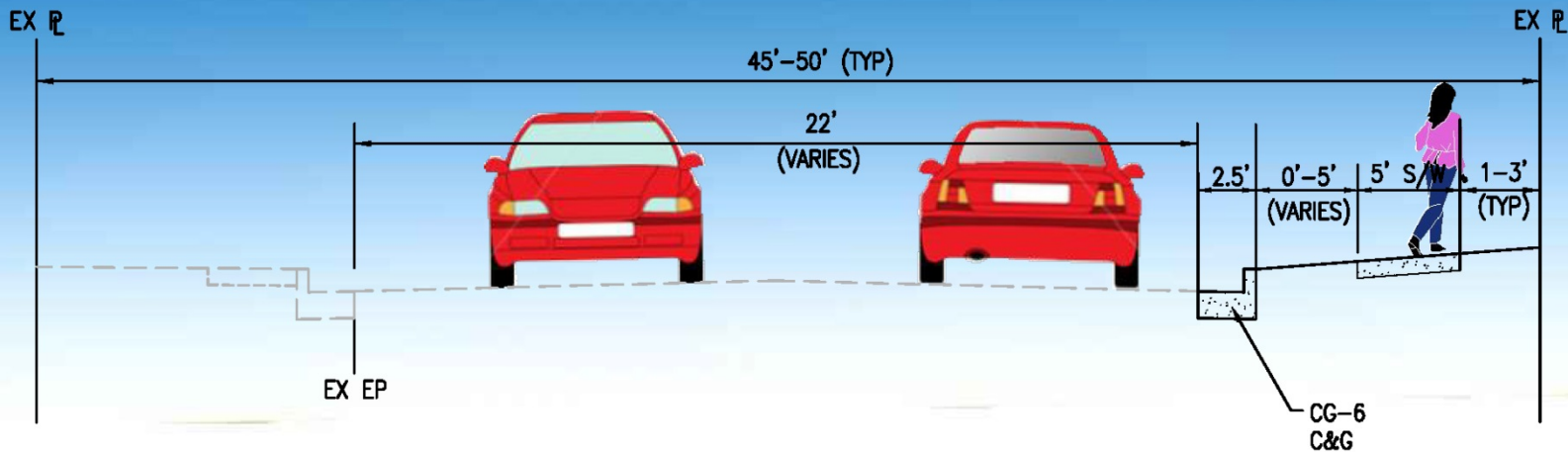
Narrow Street Section



# Burke Station Road Design Considerations

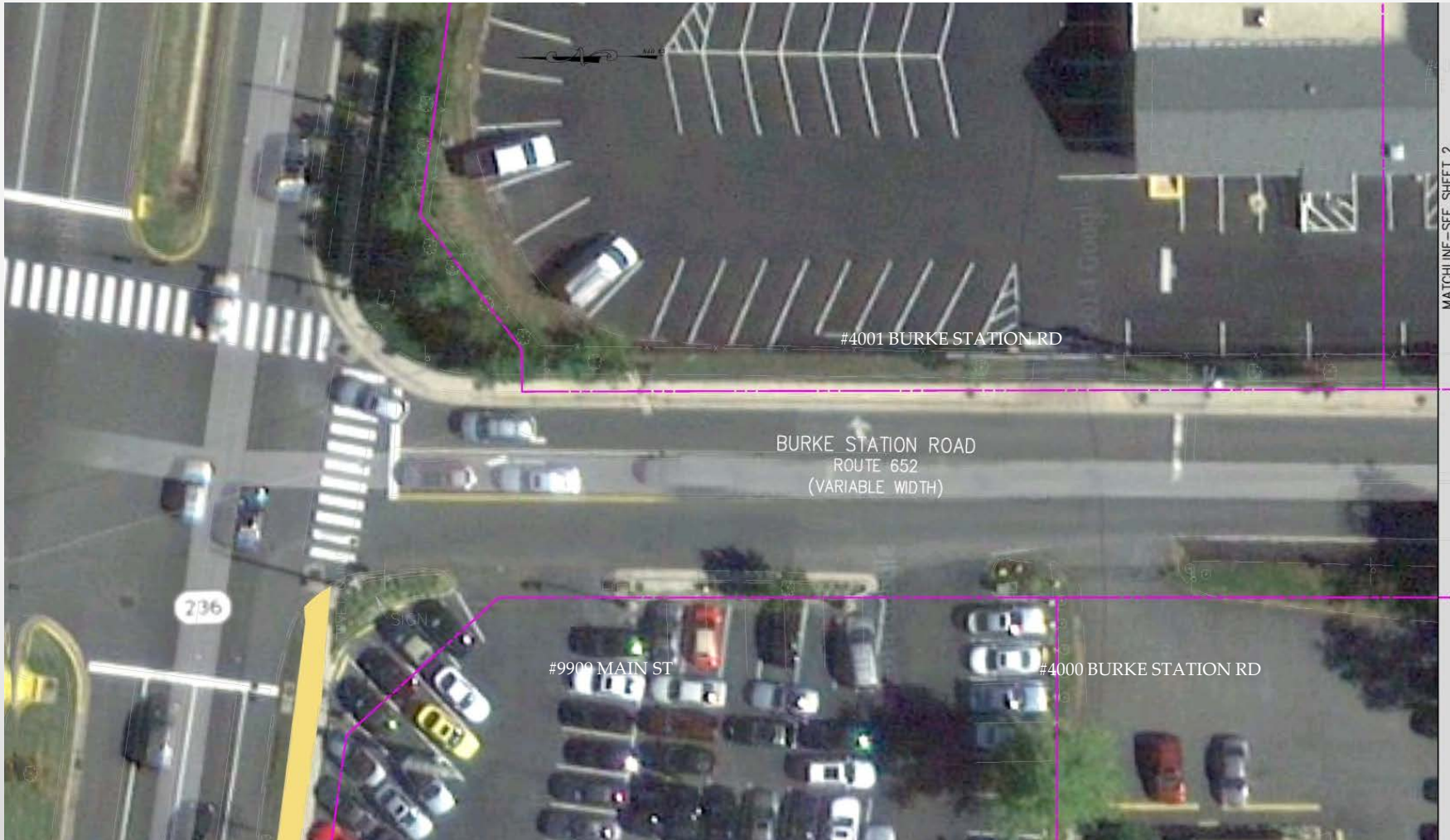
- Maintain travel lane widths
- Provide ADA compliant sidewalk (five feet wide) on west side of roadway
- Provide minimum two-foot buffer between sidewalk and travel way
- Accommodate drainage issues on west side of roadway
- Minimize tree impacts
- Minimize right of way needs

# Burke Station Road Proposed Typical Section



BURKE STATION ROAD TYPICAL STREET SECTION—IMPROVED CONDITION  
(NOT TO SCALE)

# Burke Station Road South End

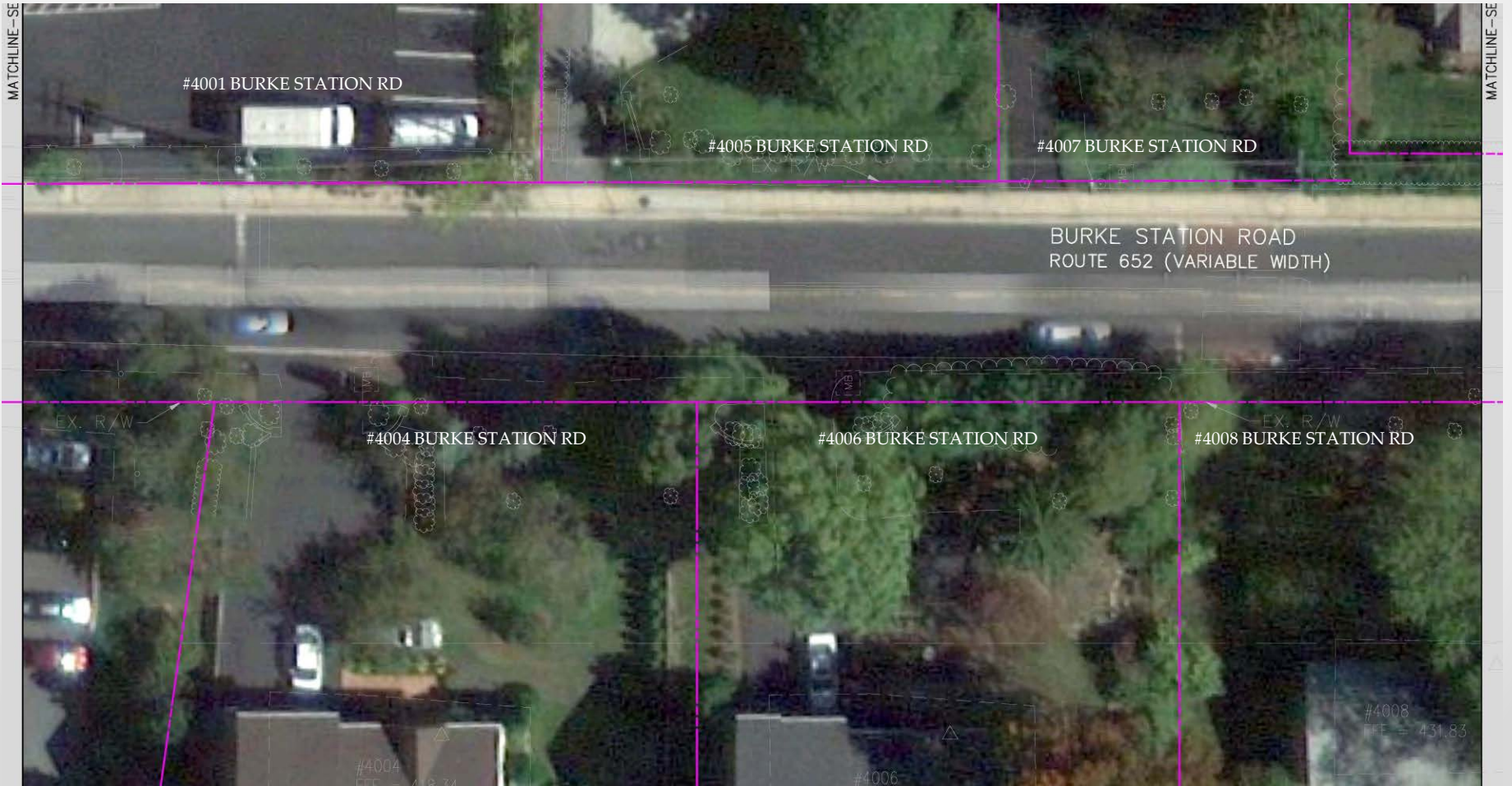


# Burke Station Road South End





# Burke Station Road South End



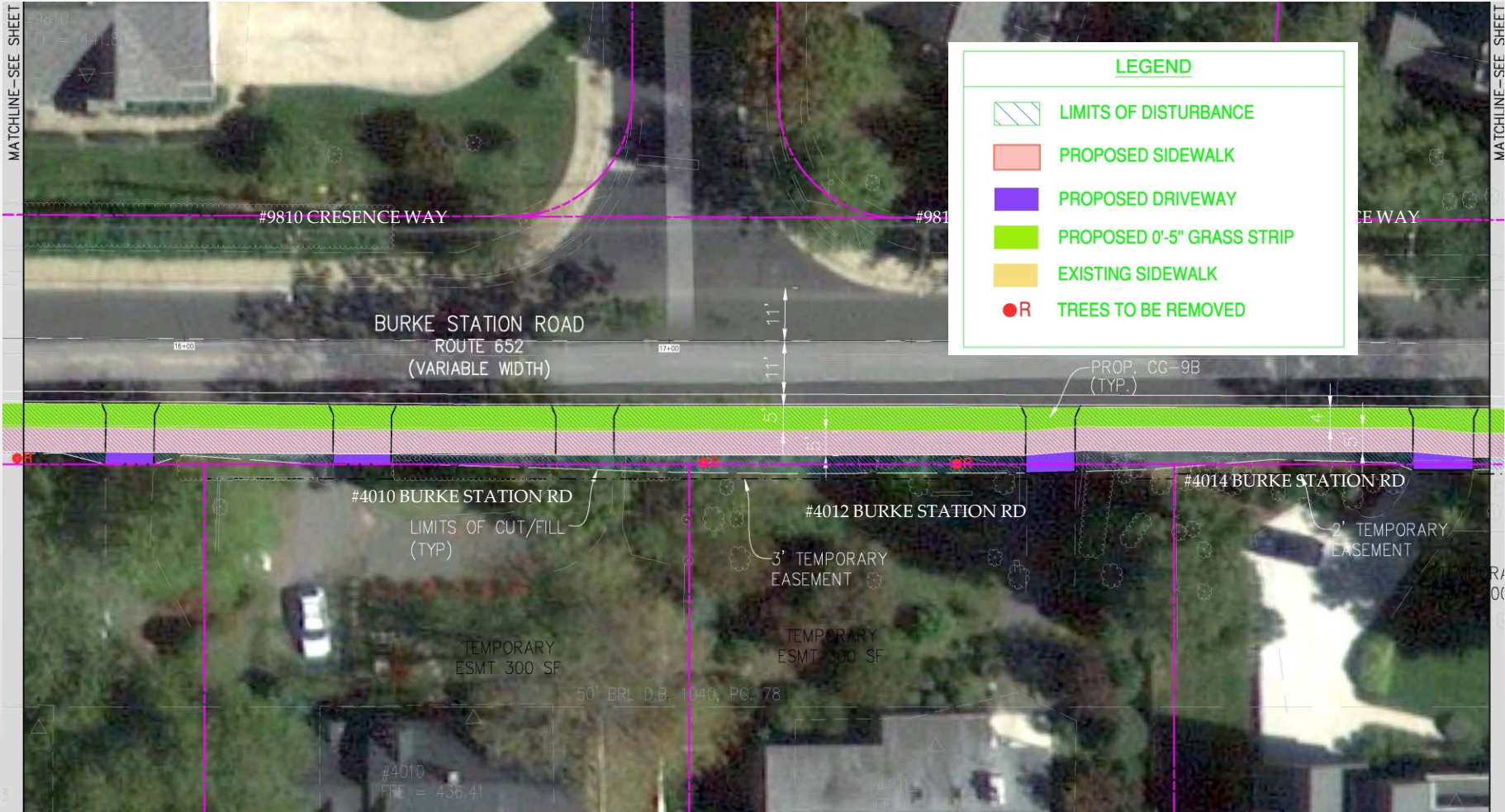
# Burke Station Road South End



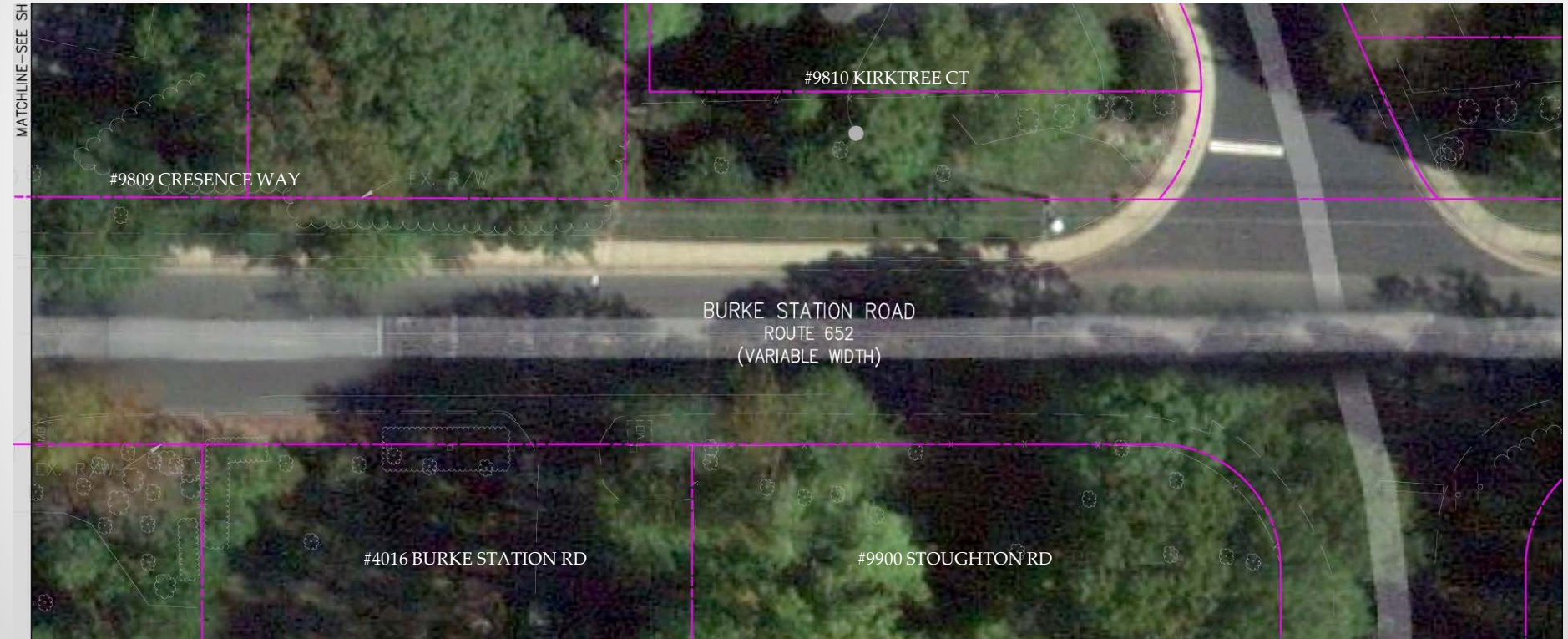
# Burke Station Road South End



# Burke Station Road South End



# Burke Station Road South End





# Burke Station Road Project Impacts

- Requires no additional right of way, only temporary construction easements
- Requires removal of 10 trees
  - Plan includes replacement of trees
  - Will work with individual property owners to develop a satisfactory landscape plan

# Roberts Road

## Project location:

- Roberts Road between Main Street and Sager Ave
- 1,100 linear feet





# Roberts Road Existing Conditions

Partial Sidewalk on North End



Narrow Street Section



# Roberts Road Existing Conditions

Existing Condition at South End



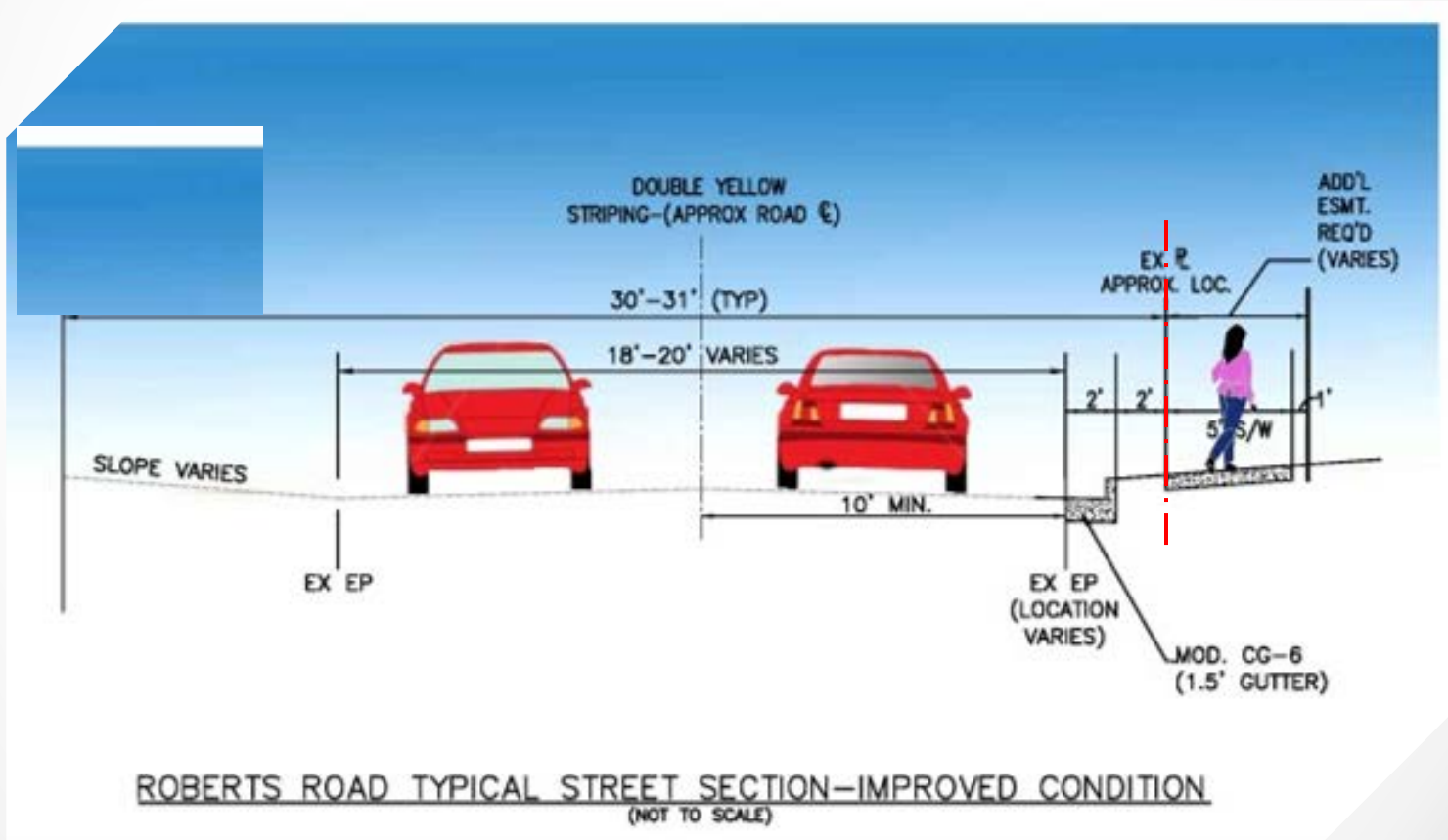
Narrow Street Section



# Roberts Road Design Considerations

- Avoid utility poles on East Side
- Extend existing sidewalk on West Side (north end)
- Maintain travel lane widths
- Provide ADA compliant sidewalk (five feet wide)
- Provide minimum two-foot buffer between sidewalk and travel way
- Accommodate drainage issues on west side of roadway
- Minimize tree and other property impacts

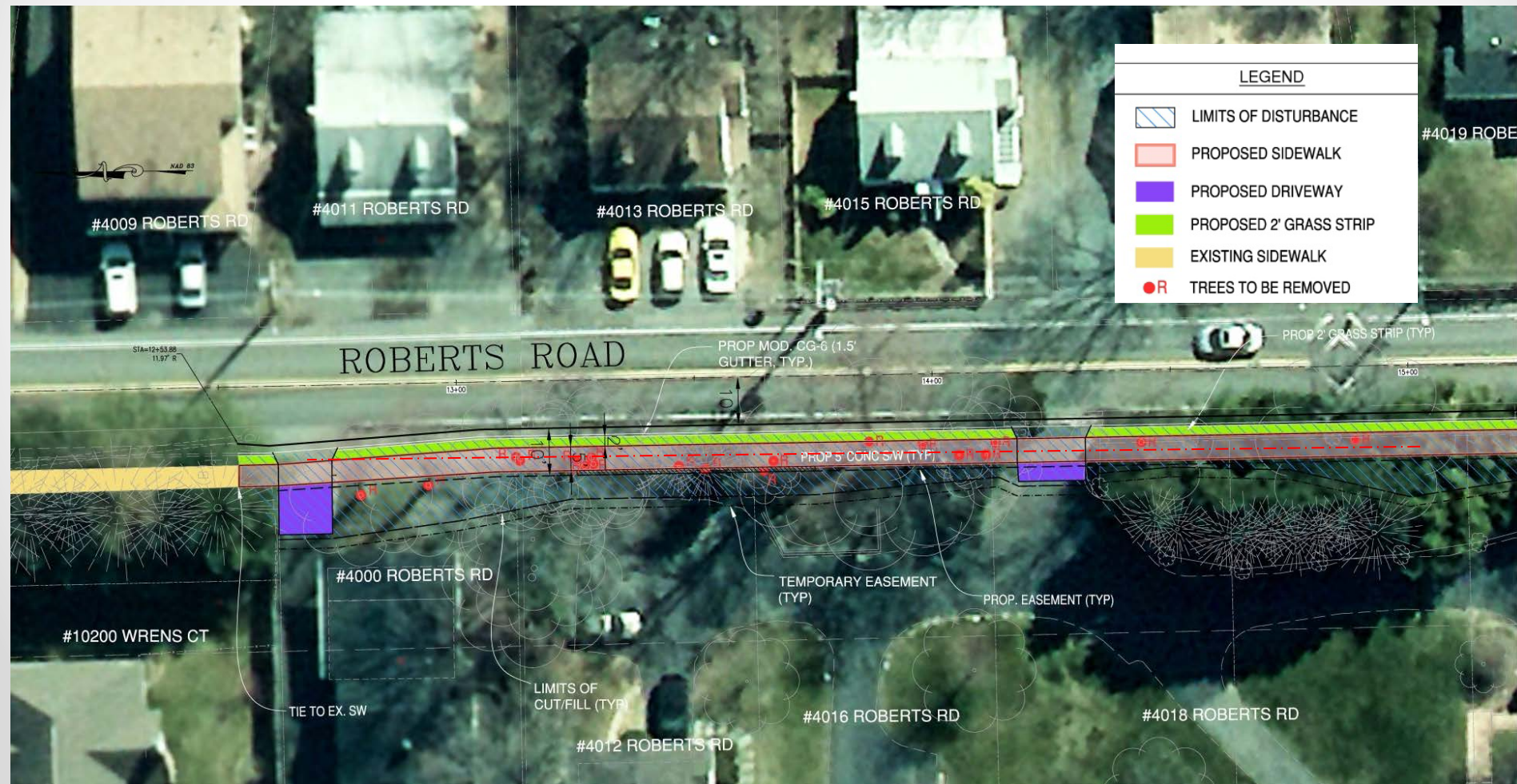
# Roberts Road Proposed Typical Section



# Roberts Road North End



# Roberts Road North End



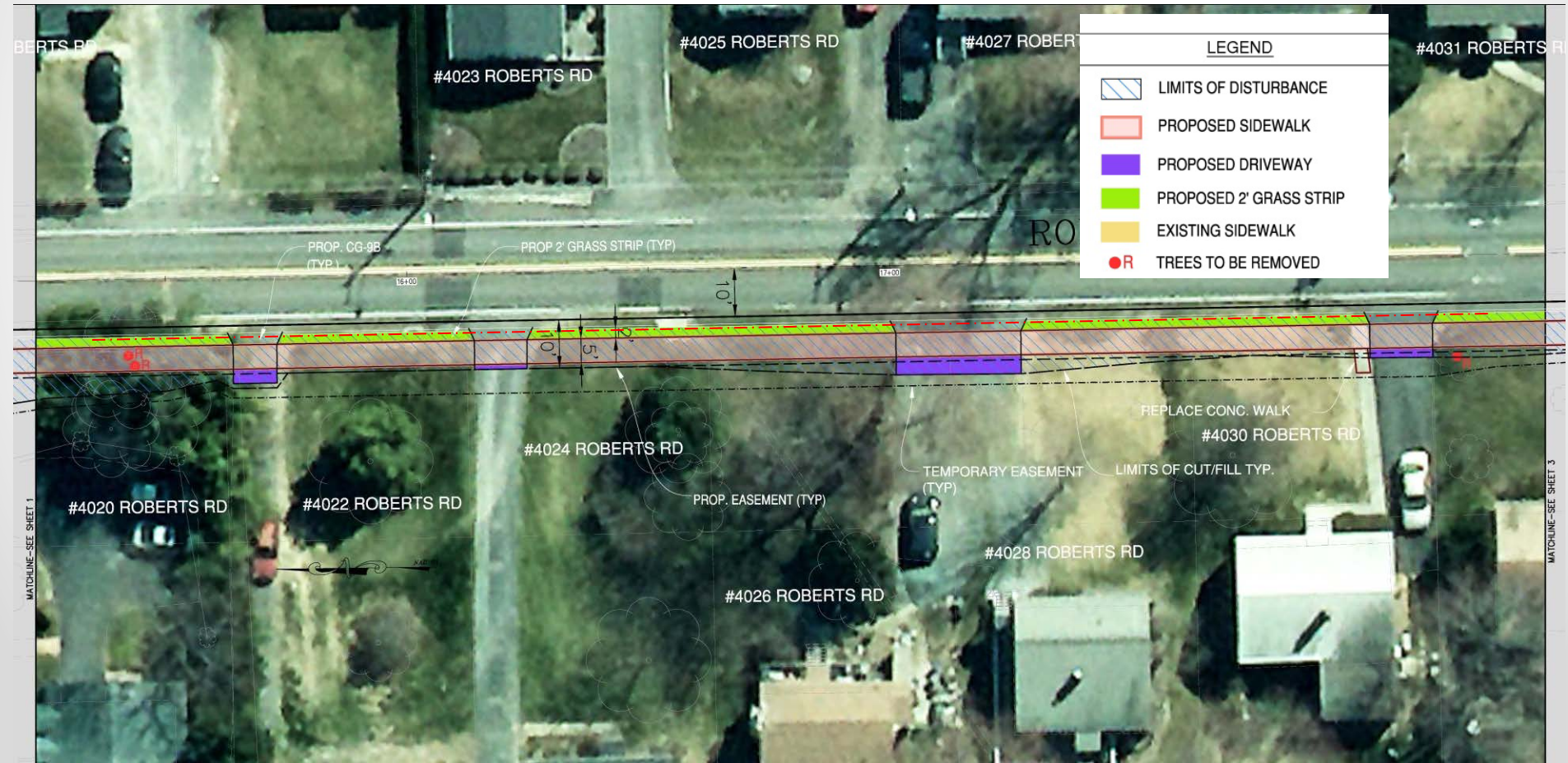
# Roberts Road North End



MATCHLINE-SEE SHEET 1

MATCHLINE-SEE SHEET 3

# Roberts Road North End





# Roberts Road South End



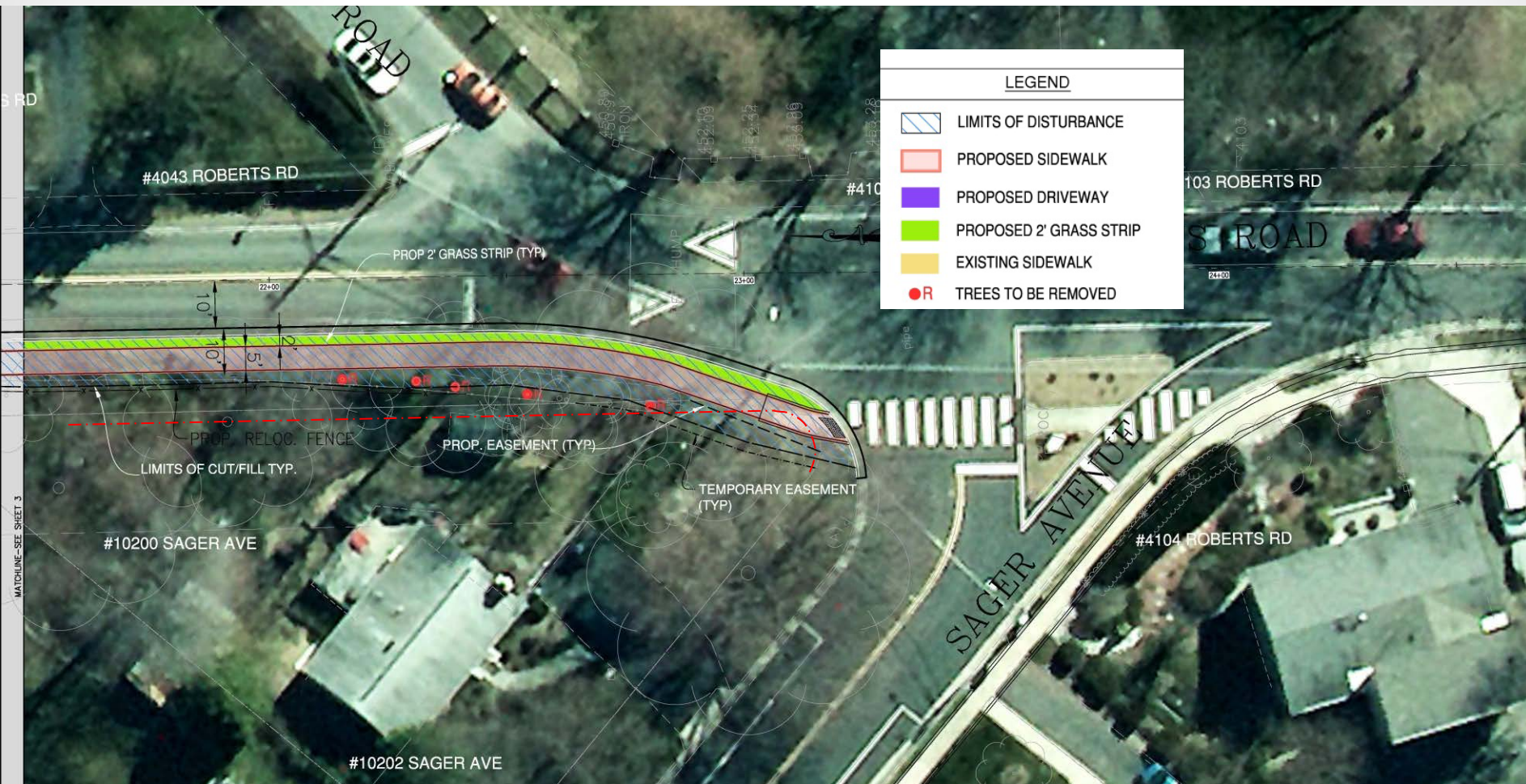
# Roberts Road South End



# Roberts Road South End



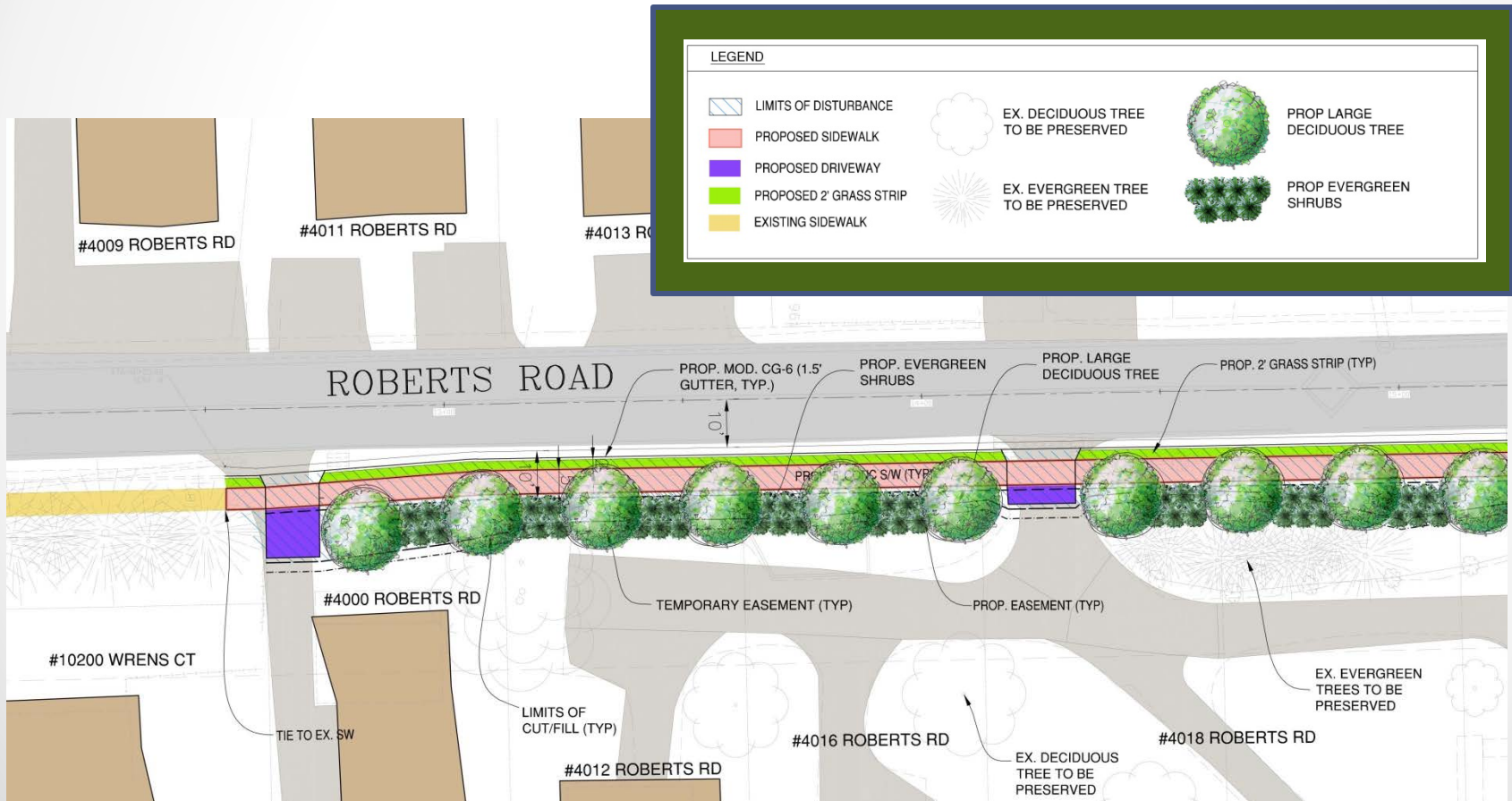
# Roberts Road South End



# Roberts Road Project Impacts

- Requires 350 square feet of right of way from 17 parcels
  - Approximately five feet back from current property line
  - Right of way can be acquired through permanent easement or land in fee
- Requires removal of 30 trees
  - Majority of removals are within a cluster at the north end
  - Plan includes replacement of trees
  - Will work with individual property owners to develop a satisfactory landscape plan

# Roberts Road Landscape Plan



# Roberts Road Cost Estimate

|                         |                  |
|-------------------------|------------------|
| Remaining Project Cost: | \$800,000        |
| Available Funding:      | \$180,000        |
| <b>Funding Needed:</b>  | <b>\$620,000</b> |

- Remaining project cost includes right of way acquisition, construction, construction inspection, VDOT expenses
- Proposed Funding Strategy
  - Apply for \$310,000 in FY 16 Revenue Sharing Funds
  - Provide \$310,000 in matching funds using 30% NVTA funds

# Burke Station Road Cost Estimate

Remaining Project Cost: \$670,000

Available Funding: \$560,000

**Funding Needed: \$110,000**

- Remaining project cost includes construction, construction inspection, VDOT expenses
- Proposed Funding Strategy
  - Apply for \$55,000 in FY 16 Revenue Sharing Funds
  - Provide \$55,000 in matching funds using 30% NVTA funds



# Next Steps

- Hold citizen information meetings to solicit feedback from impacted property owners
- Report back to City Council (worksession)
- Hold Public Hearing to receive formal public comment and endorse project design
- Apply for FY 16 Revenue Sharing Funds to fund remaining project costs
- Allocate FY 16 30% NVTAs funding to these projects as match to Revenue Sharing
- Construct projects (FY 16)

# Questions?







# Roberts Road Tree Inventory

| Plan Label | Botanic Name   | Common Name    | Caliper (DBH) | Condition Rating | Species Rating | Preserve/Remove |
|------------|----------------|----------------|---------------|------------------|----------------|-----------------|
| 1          | Acer rubrum    | Red Maple      | 11            | 0.76             | 0.70           | Remove          |
| 2          | Acer rubrum    | Red Maple      | 12            | 0.80             | 0.70           | Remove          |
| 3          | Acer rubrum    | Red Maple      | 10            | 0.60             | 0.70           | Preserve        |
| 4          | Acer rubrum    | Red Maple      | 10            | 0.60             | 0.70           | Preserve        |
| 5          | Acer rubrum    | Red Maple      | 15            | 0.60             | 0.70           | Preserve        |
| 6          | Acer rubrum    | Red Maple      | 8             | 0.60             | 0.70           | Preserve        |
| 7          | Acer rubrum    | Red Maple      | 10            | 0.48             | 0.70           | Remove          |
| 8          | Acer rubrum    | Red Maple      | 11            | 0.48             | 0.70           | Remove          |
| 9          | Acer rubrum    | Red Maple      | 18            | 0.72             | 0.70           | Remove          |
| 10         | Acer rubrum    | Red Maple      | 14            | 0.68             | 0.70           | Remove          |
| 11         | Acer rubrum    | Red Maple      | 12            | 0.68             | 0.70           | Remove          |
| 12         | Acer rubrum    | Red Maple      | 14            | 0.60             | 0.70           | Remove          |
| 13         | Acer rubrum    | Red Maple      | 21            | 0.68             | 0.70           | Preserve        |
| 14         | Acer rubrum    | Red Maple      | 26            | 0.60             | 0.70           | Remove          |
| 15         | Acer rubrum    | Red Maple      | 8             | 0.80             | 0.70           | Preserve        |
| 16         | Acer saccharum | Sugar Maple    | 13            | 0.80             | 0.70           | Preserve        |
| 17         | Acer rubrum    | Red Maple      | 30            | 0.72             | 0.70           | Remove          |
| 18         | Acer rubrum    | Red Maple      | 13            | 0.72             | 0.70           | Preserve        |
| 19         | Acer rubrum    | Red Maple      | 10            | 0.72             | 0.70           | Preserve        |
| 20         | Acer rubrum    | Red Maple      | 13            | 0.72             | 0.70           | Preserve        |
| 21         | Acer rubrum    | Red Maple      | 35            | 0.72             | 0.70           | Preserve        |
| 22         | Acer rubrum    | Red Maple      | 28            | 0.72             | 0.70           | Preserve        |
| 23         | Acer rubrum    | Red Maple      | 24            | 0.68             | 0.70           | Preserve        |
| 24         | Acer palmatum  | Japanese Maple | 7             | 0.72             | 0.80           | Preserve        |
| 25         | Pinus strobus  | White Pine     | 18            | 0.76             | 0.50           | Preserve        |
| 26         | Pinus strobus  | White Pine     | 9             | 0.60             | 0.50           | Preserve        |
| 27         | Pinus strobus  | White Pine     | 18            | 0.60             | 0.50           | Preserve        |
| 28         | Pinus strobus  | White Pine     | 10            | 0.60             | 0.50           | Preserve        |
| 29         | Pinus strobus  | White Pine     | 17            | 0.72             | 0.50           | Preserve        |

# Roberts Road Tree Inventory

| Plan Label | Botanic Name                        | Common Name     | Caliper (DBH) | Condition Rating | Species Rating | Preserve/Remove |
|------------|-------------------------------------|-----------------|---------------|------------------|----------------|-----------------|
| 30         | <i>Pinus strobus</i>                | White Pine      | 20            | 0.60             | 0.50           | Preserve        |
| 31         | <i>Liquidambar styraciflua</i>      | Sweet Gum       | 12            | 0.68             | 0.60           | Preserve        |
| 32         | <i>Liquidambar styraciflua</i>      | Sweet Gum       | 11            | 0.68             | 0.60           | Preserve        |
| 33         | <i>Liquidambar styraciflua</i>      | Sweet Gum       | 12            | 0.52             | 0.60           | Preserve        |
| 34         | <i>Liquidambar styraciflua</i>      | Sweet Gum       | 18            | 0.64             | 0.60           | Preserve        |
| 35         | <i>Liquidambar styraciflua</i>      | Sweet Gum       | 18            | 0.68             | 0.60           | Preserve        |
| 36         | <i>Liquidambar styraciflua</i>      | Sweet Gum       | 15            | 0.68             | 0.60           | Preserve        |
| 37         | <i>Liquidambar styraciflua</i>      | Sweet Gum       | 5             | 0.72             | 0.60           | Preserve        |
| 38         | <i>Liquidambar styraciflua</i>      | Sweet Gum       | 13            | 0.68             | 0.60           | Preserve        |
| 39         | <i>Liquidambar styraciflua</i>      | Sweet Gum       | 5             | 0.48             | 0.60           | Remove          |
| 40         | <i>Liquidambar styraciflua</i>      | Sweet Gum       | 10            | 0.48             | 0.60           | Preserve        |
| 41         | <i>Liquidambar styraciflua</i>      | Sweet Gum       | 15            | 0.60             | 0.60           | Preserve        |
| 42         | <i>Liquidambar styraciflua</i>      | Sweet Gum       | 19            | 0.60             | 0.60           | Preserve        |
| 43         | <i>Prunus serotina</i>              | Black Cherry    | 8             | 0.72             | 0.50           | Preserve        |
| 44         | <i>Prunus serotina</i>              | Black Cherry    | 5             | 0.48             | 0.50           | Remove          |
| 45         | <i>Prunus serotina</i>              | Black Cherry    | 21            | 0.60             | 0.50           | Remove          |
| 46         | <i>Prunus subhirtella</i> 'Pendula' | Weeping Cherry  | 9             | 0.80             | 0.50           | Preserve        |
| 47         | <i>Prunus serotina</i>              | Black Cherry    | 12            | 0.40             | 0.50           | Preserve        |
| 48         | <i>Prunus subhirtella</i> 'Pendula' | Weeping Cherry  | 11            | 0.80             | 0.50           | Preserve        |
| 49         | <i>Prunus subhirtella</i> 'Pendula' | Weeping Cherry  | 1             | 0.80             | 0.50           | Preserve        |
| 50         | <i>Prunus serotina</i>              | Black Cherry    | 38            | 0.48             | 0.50           | Remove          |
| 51         | <i>Prunus serotina</i>              | Black Cherry    | 10            | 0.64             | 0.50           | Remove          |
| 52         | <i>Platanus occidentalis</i>        | Sycamore        | 9             | 0.68             | 0.60           | Preserve        |
| 53         | <i>Platanus occidentalis</i>        | Sycamore        | 13            | 0.68             | 0.60           | Preserve        |
| 54         | <i>Ulmus americana</i>              | American Elm    | 8             | 0.68             | 0.60           | Preserve        |
| 55         | <i>Ulmus americana</i>              | American Elm    | 15            | 0.68             | 0.60           | Preserve        |
| 56         | <i>Ulmus americana</i>              | American Elm    | 15            | 0.72             | 0.60           | Preserve        |
| 57         | <i>Ulmus americana</i>              | American Elm    | 7             | 0.68             | 0.60           | Remove          |
| 58         | <i>Cupressocyparis leylandii</i>    | Leyland Cypress | 5             | 0.72             | 0.70           | Preserve        |
| 59         | <i>Cupressocyparis leylandii</i>    | Leyland Cypress | 6             | 0.80             | 0.70           | Preserve        |

# Roberts Road Tree Inventory

| Plan Label | Botanic Name              | Common Name       | Caliper (DBH) | Condition Rating | Species Rating | Preserve/Remove |
|------------|---------------------------|-------------------|---------------|------------------|----------------|-----------------|
| 60         | Cupressocyparis leylandii | Leyland Cypress   | 5             | 0.80             | 0.70           | Preserve        |
| 61         | Cupressocyparis leylandii | Leyland Cypress   | 6             | 0.76             | 0.70           | Remove          |
| 62         | Cupressocyparis leylandii | Leyland Cypress   | 8             | 0.80             | 0.70           | Remove          |
| 63         | Cupressocyparis leylandii | Leyland Cypress   | 6             | 0.72             | 0.70           | Preserve        |
| 64         | Cupressocyparis leylandii | Leyland Cypress   | 8             | 0.72             | 0.70           | Preserve        |
| 65         | Cupressocyparis leylandii | Leyland Cypress   | 9             | 0.72             | 0.70           | Preserve        |
| 66         | Cupressocyparis leylandii | Leyland Cypress   | 10            | 0.72             | 0.70           | Preserve        |
| 67         | Cupressocyparis leylandii | Leyland Cypress   | 8             | 0.72             | 0.70           | Preserve        |
| 68         | Cupressocyparis leylandii | Leyland Cypress   | 9             | 0.72             | 0.70           | Preserve        |
| 69         | Cupressocyparis leylandii | Leyland Cypress   | 8             | 0.72             | 0.70           | Preserve        |
| 70         | Cupressocyparis leylandii | Leyland Cypress   | 8             | 0.72             | 0.70           | Preserve        |
| 71         | Cupressocyparis leylandii | Leyland Cypress   | 11            | 0.72             | 0.70           | Preserve        |
| 72         | Nyssa sylvatica           | Black Gum         | 22            | 0.60             | 0.80           | Remove          |
| 73         | Castanea dentata          | American Chestnut | 7             | 0.68             | 0.10           | Remove          |
| 74         | Castanea dentata          | American Chestnut | 8             | 0.68             | 0.10           | Remove          |
| 75         | Cercis canadensis         | Redbud            | 7             | 0.24             | 0.60           | Preserve        |
| 76         | Albizia julibrissin       | Mimosa            | 12            | 0.80             | 0.30           | Preserve        |
| 77         | Magnolia stellata         | Star Magnolia     | 2             | 0.80             | 0.70           | Preserve        |
| 78         | Castanea dentata          | American Chestnut | 3             | 0.80             | 0.10           | Remove          |
| 79         | Juniperus virginiana      | Eastern Redcedar  | 6             | 0.48             | 0.70           | Remove          |
| 80         | Juniperus virginiana      | Eastern Redcedar  | 16            | 0.68             | 0.70           | Remove          |
| 81         | Quercus palustris         | Pin Oak           | 13            | 0.76             | 0.70           | Remove          |
| 82         | Quercus palustris         | Pin Oak           | 3             | 0.80             | 0.70           | Remove          |
| 83         | Cornus florida            | Flowering Dogwood | 6             | 0.80             | 0.6            | Preserve        |
| 84         | Cornus florida            | Flowering Dogwood | 6             | 0.60             | 0.6            | Preserve        |
| 85         | Cornus florida            | Flowering Dogwood | 6             | 0.68             | 0.6            | Preserve        |
| 86         | Cornus florida            | Flowering Dogwood | 6             | 0.76             | 0.6            | Preserve        |
| 87         | Cornus florida            | Flowering Dogwood | 6             | 0.80             | 0.6            | Preserve        |
| 88         | Cornus florida            | Flowering Dogwood | 10            | 0.80             | 0.6            | Preserve        |
| 89         | Cornus florida            | Flowering Dogwood | 8             | 0.24             | 0.6            | Preserve        |

# Roberts Road Tree Inventory

| Plan Label | Botanic Name                   | Common Name       | Caliper (DBH) | Condition Rating | Species Rating | Preserve/Remove |
|------------|--------------------------------|-------------------|---------------|------------------|----------------|-----------------|
| 90         | <i>Cornus florida</i>          | Flowering Dogwood | 7             | 0.80             | 0.6            | Preserve        |
| 91         | <i>Malus sp.</i>               | Crabapple         | 14            | 0.68             | 0.60           | Preserve        |
| 92         | <i>Ilex opaca</i>              | American Holly    | 12            | 0.80             | 0.70           | Preserve        |
| 93         | <i>Ilex opaca</i>              | American Holly    | 11            | 0.60             | 0.70           | Preserve        |
| 94         | <i>Ilex opaca</i>              | American Holly    | 6             | 0.72             | 0.70           | Preserve        |
| 95         | <i>Picea abies</i>             | Norway Spruce     | 10            | 0.72             | 0.70           | Preserve        |
| 96         | <i>Pyrus calleryana</i>        | Bradford Pear     | 13            | 0.80             | 0.30           | Preserve        |
| 97         | <i>Pyrus calleryana</i>        | Bradford Pear     | 3             | 0.80             | 0.30           | Preserve        |
| 98         | <i>Prunus cerasifera</i>       | Cherry Plum       | 10            | 0.76             | 0.50           | Preserve        |
| 99         | <i>Gleditsia triacanthos</i>   | Honey Locust      | 9             | 0.76             | 0.60           | Preserve        |
| 100        | <i>Liriodendron tulipifera</i> | Tulip Poplar      | 18            | 0.48             | 0.70           | Remove          |
| 101        | <i>Liriodendron tulipifera</i> | Tulip Poplar      | 18            | 0.60             | 0.70           | Remove          |
| 102        | <i>Morus alba</i>              | White Mulberry    | 10            | 0.40             | 0.40           | Remove          |
| 103        | <i>Morus alba</i>              | White Mulberry    | 30            | 0.60             | 0.40           | Remove          |



# Burke Station Road Tree Inventory

| Plan Label | Botanic Name                        | Common Name          | Caliper (DBH) | Condition Rating | Species Rating | Preserve/Remove |
|------------|-------------------------------------|----------------------|---------------|------------------|----------------|-----------------|
| 1          | <i>Acer campestre</i>               | Hedge Maple          | 6             | 0.76             | 0.80           | Remove          |
| 2          | <i>Pinus virginiana</i>             | Virginia Pine        | 16            | 0.60             | 0.50           | Remove          |
| 3          | <i>Pinus virginiana</i>             | Virginia Pine        | 16            | 0.68             | 0.50           | Preserve        |
| 4          | <i>Thuja occidentalis</i>           | Arborvitae           | 4             | 0.80             | 0.60           | Remove          |
| 5          | <i>Cornus florida</i>               | Flowering Dogwood    | 4             | 0.80             | 0.60           | Preserve        |
| 6          | <i>Thuja occidentalis</i>           | Arborvitae           | 12            | 0.80             | 0.60           | Remove          |
| 7          | <i>Prunus serrulata</i> 'Kwanzan'   | Kwanzan Cherry       | 12            | 0.68             | 0.50           | Preserve        |
| 8          | <i>Picea pungens</i>                | Colorado Blue Spruce | 8             | 0.80             | 0.70           | Preserve        |
| 9          | <i>Picea pungens</i>                | Colorado Blue Spruce | 10            | 0.80             | 0.70           | Preserve        |
| 10         | <i>Prunus</i> sp.                   | Cherry               | 12            | 0.80             | 0.50           | Preserve        |
| 11         | <i>Quercus alba</i>                 | White Oak            | 20            | 0.80             | 0.80           | Preserve        |
| 12         | <i>Prunus subhirtella</i> "Pendula" | Weeping Cherry       | 8             | 0.72             | 0.50           | Preserve        |
| 13         | <i>Cupressocyparis leylandii</i>    | Leyland Cypress      | 5             | 0.72             | 0.70           | Preserve        |
| 14         | <i>Cupressocyparis leylandii</i>    | Leyland Cypress      | 10            | 0.72             | 0.70           | Preserve        |
| 15         | <i>Cupressocyparis leylandii</i>    | Leyland Cypress      | 5             | 0.72             | 0.70           | Preserve        |
| 16         | <i>Cupressocyparis leylandii</i>    | Leyland Cypress      | 5             | 0.72             | 0.70           | Preserve        |
| 17         | <i>Cupressocyparis leylandii</i>    | Leyland Cypress      | 8             | 0.72             | 0.70           | Preserve        |
| 18         | <i>Cupressocyparis leylandii</i>    | Leyland Cypress      | 6             | 0.72             | 0.70           | Preserve        |
| 19         | <i>Cupressocyparis leylandii</i>    | Leyland Cypress      | 6             | 0.72             | 0.70           | Preserve        |
| 20         | <i>Cupressocyparis leylandii</i>    | Leyland Cypress      | 12            | 0.72             | 0.70           | Preserve        |
| 21         | <i>Cupressocyparis leylandii</i>    | Leyland Cypress      | 6             | 0.72             | 0.70           | Preserve        |
| 22         | <i>Cupressocyparis leylandii</i>    | Leyland Cypress      | 5             | 0.72             | 0.70           | Preserve        |
| 23         | <i>Cupressocyparis leylandii</i>    | Leyland Cypress      | 10            | 0.72             | 0.70           | Preserve        |
| 24         | <i>Cupressocyparis leylandii</i>    | Leyland Cypress      | 6             | 0.72             | 0.70           | Preserve        |
| 25         | <i>Cupressocyparis leylandii</i>    | Leyland Cypress      | 3             | 0.72             | 0.70           | Preserve        |
| 26         | <i>Cupressocyparis leylandii</i>    | Leyland Cypress      | 7             | 0.72             | 0.70           | Preserve        |
| 27         | <i>Ilex opaca</i>                   | American Holly       | 8             | 0.72             | 0.70           | Preserve        |

# Burke Station Road Tree Inventory

| Plan Label | Botanic Name              | Common Name       | Caliper (DBH) | Condition Rating | Species Rating | Preserve/Remove |
|------------|---------------------------|-------------------|---------------|------------------|----------------|-----------------|
| 28         | Castanea dentata          | American Chestnut | 12            | 0.72             | 0.10           | Preserve        |
| 29         | Ilex opaca                | American Holly    | 14            | 0.72             | 0.70           | Preserve        |
| 30         | Castanea dentata          | American Chestnut | 12            | 0.72             | 0.10           | Preserve        |
| 31         | Cornus florida            | Flowering Dogwood | 9             | 0.76             | 0.60           | Preserve        |
| 32         | Lagerstroemia indica      | Crape Myrtle      | 17            | 0.72             | 0.80           | Preserve        |
| 33         | Cornus florida            | Flowering Dogwood | 5             | 0.76             | 0.60           | Remove          |
| 34         | Acer rubrum               | Red Maple         | 30            | 0.76             | 0.70           | Preserve        |
| 35         | Quercus prinus            | Chestnut Oak      | 26            | 0.56             | 0.70           | Remove          |
| 36         | Acer rubrum               | Red Maple         | 14            | 0.68             | 0.70           | Preserve        |
| 37         | Picea abies               | Norway Spruce     | 5             | 0.80             | 0.70           | Preserve        |
| 38         | Acer palmatum             | Japanese Maple    | 9             | 0.80             | 0.70           | Preserve        |
| 39         | Magnolia soulangiana      | Saucer Magnolia   | 9             | 0.80             | 0.70           | Remove          |
| 40         | Cornus florida            | Flowering Dogwood | 5             | 0.80             | 0.60           | Preserve        |
| 41         | Acer rubrum               | Red Maple         | 8             | 0.68             | 0.70           | Preserve        |
| 42         | Castanea dentata          | American Chestnut | 3             | 0.68             | 0.10           | Preserve        |
| 43         | Tilia americana           | Basswood          | 20            | 0.80             | 0.70           | Preserve        |
| 44         | Ilex opaca                | American Holly    | 4             | 0.80             | 0.70           | Preserve        |
| 45         | Ilex x attenuata "Foster" | Foster Holly      | 3             | 0.80             | 0.70           | Preserve        |
| 46         | Ilex x attenuata "Foster" | Foster Holly      | 3             | 0.80             | 0.70           | Preserve        |
| 47         | Ilex x attenuata "Foster" | Foster Holly      | 3             | 0.80             | 0.70           | Preserve        |
| 48         | Lagerstroemia indica      | Crape Myrtle      | 6             | 0.80             | 0.80           | Preserve        |
| 49         | Betula nigra              | River Birch       | 13            | 0.80             | 0.70           | Preserve        |
| 50         | Picea abies               | Norway Spruce     | 3             | 0.48             | 0.70           | Preserve        |
| 51         | Acer rubrum               | Red Maple         | 8             | 0.60             | 0.70           | Preserve        |
| 52         | Acer rubrum               | Red Maple         | 8             | 0.72             | 0.70           | Preserve        |
| 53         | Acer rubrum               | Red Maple         | 18            | 0.68             | 0.70           | Preserve        |
| 54         | Picea abies               | Norway Spruce     | 3             | 0.60             | 0.70           | Preserve        |

# Burke Station Road Tree Inventory

| Plan Label | Botanic Name                      | Common Name       | Caliper (DBH) | Condition Rating | Species Rating | Preserve/Remove |
|------------|-----------------------------------|-------------------|---------------|------------------|----------------|-----------------|
| 55         | <i>Acer rubrum</i>                | Red Maple         | 12            | 0.72             | 0.70           | Preserve        |
| 56         | <i>Acer rubrum</i>                | Red Maple         | 18            | 0.76             | 0.70           | Remove          |
| 57         | <i>Acer rubrum</i>                | Red Maple         | 9             | 0.68             | 0.70           | Preserve        |
| 58         | <i>Acer rubrum</i>                | Red Maple         | 4             | 0.68             | 0.70           | Preserve        |
| 59         | <i>Prunus serrulata</i> 'Kwanzan' | Kwanzan Cherry    | 5             | 0.80             | 0.50           | Preserve        |
| 60         | <i>Magnolia grandiflora</i>       | Southern Magnolia | 10            | 0.68             | 0.70           | Preserve        |
| 61         | <i>Lagerstroemia indica</i>       | Crape Myrtle      | 8             | 0.80             | 0.80           | Preserve        |
| 62         | <i>Ilex x attenuata</i> "Foster"  | Foster Holly      | 3             | 0.80             | 0.70           | Preserve        |
| 63         | <i>Lagerstroemia indica</i>       | Crape Myrtle      | 10            | 0.80             | 0.80           | Preserve        |
| 64         | <i>Acer palmatum</i>              | Red Maple         | 3             | 0.76             | 0.70           | Preserve        |
| 65         | <i>Acer rubrum</i>                | Red Maple         | 13            | 0.76             | 0.70           | Preserve        |
| 66         | <i>Robinia psuedoacacia</i>       | Black Locust      | 18            | 0.48             | 0.50           | Remove          |
| 67         | <i>Acer rubrum</i>                | Red Maple         | 14            | 0.72             | 0.70           | Preserve        |
| 68         | <i>Liriodendron tulipifera</i>    | Tulip Poplar      | 16            | 0.68             | 0.70           | Preserve        |
| 69         | <i>Acer rubrum</i>                | Red Maple         | 16            | 0.72             | 0.70           | Preserve        |
| 70         | <i>Liriodendron tulipifera</i>    | Tulip Poplar      | 18            | 0.72             | 0.70           | Preserve        |
| 71         | <i>Acer rubrum</i>                | Red Maple         | 6             | 0.04             | 0.70           | Remove          |
| 72         | <i>Tsuga canadensis</i>           | Eastern Hemlock   | 6             | 0.80             | 0.60           | Preserve        |
| 73         | <i>Pinus strobus</i>              | White Pine        | 8             | 0.80             | 0.50           | Preserve        |
| 74         | <i>Quercus alba</i>               | White Oak         | 24            | 0.80             | 0.80           | Preserve        |
| 75         | <i>Quercus rubra</i>              | Red Oak           | 20            | 0.80             | 0.70           | Preserve        |
| 76         | <i>Pinus strobus</i>              | White Pine        | 8             | 0.76             | 0.50           | Preserve        |
| 77         | <i>Quercus falcata</i>            | Southern Red Oak  | 24            | 0.76             | 0.70           | Preserve        |
| 78         | <i>Pinus taeda</i>                | Loblolly Pine     | 16            | 0.72             | 0.50           | Preserve        |
| 79         | <i>Quercus alba</i>               | White Oak         | 18            | 0.76             | 0.80           | Preserve        |