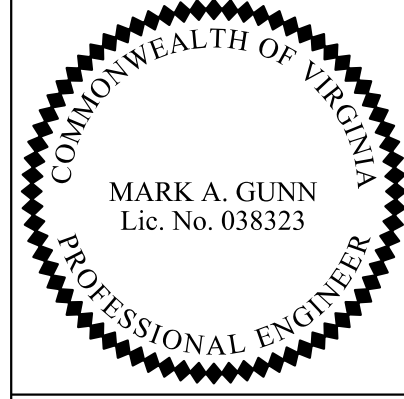


PROJECT MANAGER Wendy Block Sanford, City of Fairfax (703) 385-7889
SURVEYED BY Rinker Design Assoc., P.C. (703) 368-7373 (2011)
DESIGNED BY Adam D. Welschenbach, P.E., Rinker Design Assoc., P.C. (703) 368-7373
SUBSURFACE UTILITY PROVIDED BY Accumack (2011)

Grading Plan

THIS SHEET IS FOR GRADING INFORMATION ONLY



MARK A. GUNN
Lic. No. 038323
PROFESSIONAL ENGINEER

Rinker Design Associates, P.C.
Manassas, Virginia
PROFESSIONAL ENGINEER

REVISED	STATE	ROUTE	STATE PROJECT	SHEET NO.
	VA.	-	0029-151-105 P101, P102, R201, C501	16(3)

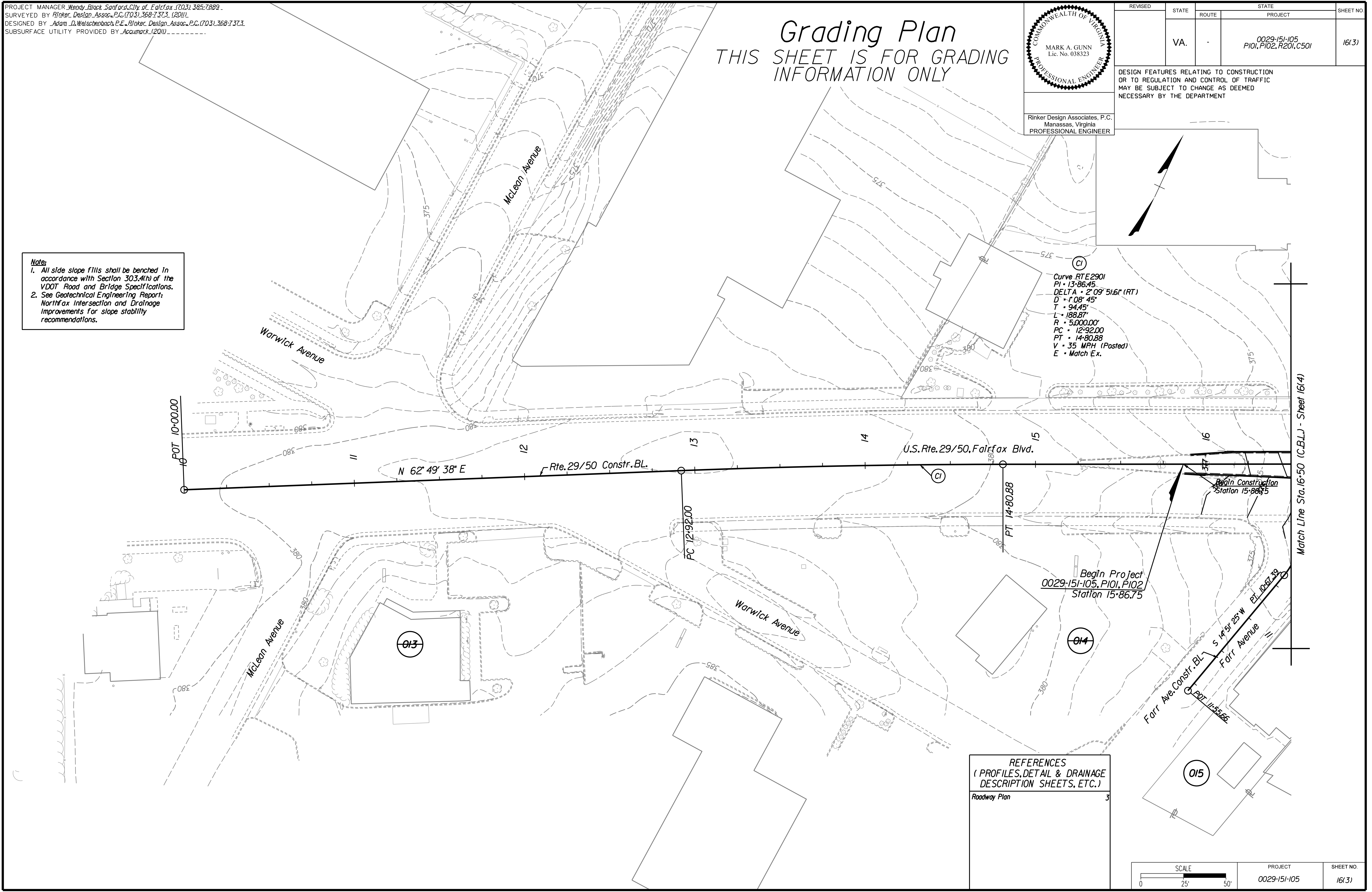
DESIGN FEATURES RELATING TO CONSTRUCTION OR TO REGULATION AND CONTROL OF TRAFFIC MAY BE SUBJECT TO CHANGE AS DEEMED NECESSARY BY THE DEPARTMENT

Office Locations
Manassas, VA
Manassas Park, VA
Reston, VA
Warrenton, OR

Rinker Design Associates, P.C.
Civil Engineering
Transportation - Environmental
Right of Way Services

Note:

- All side slope fills shall be benched in accordance with Section 303.4(h) of the VDOT Road and Bridge Specifications.
- See Geotechnical Engineering Report: Northfax Intersection and Drainage Improvements for slope stability recommendations.



REFERENCES
(PROFILES, DETAIL & DRAINAGE DESCRIPTION SHEETS, ETC.)

Roadway Plan	3
--------------	---

SCALE 0 25' 50'

PROJECT	0029-151-105	SHEET NO.	16(3)
---------	--------------	-----------	-------

PROJECT MANAGER Wendy Block Sanford, City of Fairfax
SURVEYED BY Rinker Design Assoc., P.C. (703) 368-7373
DESIGN SUPERVISED BY Mark Gunn, P.E. Rinker Design Assoc., P.C. (703) 368-7373
DESIGNED BY Adam D. Welschenbach, P.E. Rinker Design Assoc., P.C. (703) 368-7373



Rinker Design Associates, P.C.
Manassas, Virginia
PROFESSIONAL ENGINEER

Grading Plan

THIS SHEET IS FOR GRADING INFORMATION ONLY

REVISED	STATE	ROUTE	STATE	PROJECT	SHEET NO.
	VA.			0029-151-105 P101, P102, R201, C501	16(4)

DESIGN FEATURES RELATING TO CONSTRUCTION OR TO REGULATION AND CONTROL OF TRAFFIC MAY BE SUBJECT TO CHANGE AS DEEMED NECESSARY BY THE DEPARTMENT

4A POI Fairfax Blvd. (U.S. Route 29/50) Sta. 16+55.25
POI Farr Avenue Sta. 10+00.00

C --- Denotes Construction Limits in Cut
F --- Denotes Construction Limits in Fill

C7
Curve FARROW
PI - 10+54.06
DELTA - 39° 51' 55.48" (RT)
D - 143' 14" 22"
T - 14.51'
L - 27.83'
R - 40.00'
PC - 10+39.56
PT - 10+67.39
V - Match Ex.
E - Match Ex.

Begin Project
0029-151-105, C501
Station 16+73.15

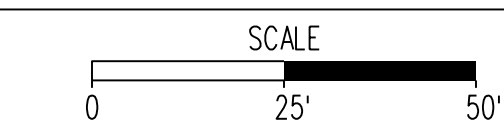
Begin Project
0029-151-105, R201
Station 16+83.54

U.S. Rte. 29/50
Fairfax Blvd.

U.S. Rte. 29/50,
Fairfax Blvd.

REFERENCES
(PROFILES, DETAIL & DRAINAGE
DESCRIPTION SHEETS, ETC.)
Roadway Plan 4

Notes:
1. All side slope fills shall be benched in accordance with Section 303.4(h) of the VDOT Road and Bridge Specifications.
2. See Geotechnical Engineering Report, Northfax Intersection and Drainage Improvements for slope stability recommendations.



PROJECT
0029-151-105
SHEET NO.
16(4)

PROJECT MANAGER Wendy Block Sanford, City of Fairfax (703) 385-7889
SURVEYED BY Rinker Design Assoc., P.C. (703) 368-7373 (2011)
DESIGNED BY Adam D. Welschenbach, P.E., Rinker Design Assoc., P.C. (703) 368-7373
SUBSURFACE UTILITY PROVIDED BY AccuMark (2011)

Grading Plan

THIS SHEET IS FOR GRADING INFORMATION ONLY

REVISED	STATE	ROUTE	STATE	PROJECT	SHEET NO.
	VA.			0029-151-105 P101, P102, R201, C501, D601	16(5)

DESIGN FEATURES RELATING TO CONSTRUCTION OR TO REGULATION AND CONTROL OF TRAFFIC MAY BE SUBJECT TO CHANGE AS DEEMED NECESSARY BY THE DEPARTMENT

Note:

- All side slope fills shall be benched in accordance with Section 303.4(h) of the VDOT Road and Bridge Specifications.
- See Geotechnical Engineering Report: Northfax Intersection and Drainage Improvements for slope stability recommendations.

Curve RTE12303
 PI • 69-14.65
 DELTA • 2° 17' 01.27" (RT)
 D • 102' 30"
 T • 109.62'
 L • 219.22'
 R • 5,500.00'
 PC • 68-05.03
 PT • 70-24.24
 V • 30 MPH (Posted)
 E • -2.0% (U.L.S.)

Begin Project
 0029-151-105, D601
 Station 69+98.23

End Project
 0029-151-105, D601
 Station 70+6.85



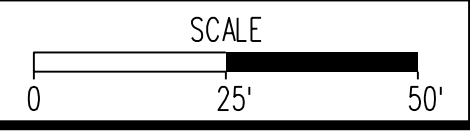
Rinker Design Associates, P.C.
 Manassas, Virginia
 PROFESSIONAL ENGINEER

5A POI Fairfax Blvd./U.S. Route 29/50 Sta. 25+00.74
C POI Chain Bridge Rd./Route 123 Sta. 67+38.45

D Denotes Construction Limits In Cut
F Denotes Construction Limits In Fill

REFERENCES
 (PROFILES, DETAIL & DRAINAGE DESCRIPTION SHEETS, ETC.)
 Roadway Plan 5

C4
 Curve RTE12302
 PI • 65+17.94
 DELTA • 3° 42' 30.21" (RT)
 D • 102' 30"
 T • 178.05'
 L • 355.98'
 R • 5,500.00'
 PC • 63+39.89
 PT • 66+95.87
 V • 30 MPH (Posted)
 E • -2.0% (U.L.S.)



PROJECT	SHEET NO.
0029-151-105	16(5)

Rinker Design Associates, P.C.
 Civil Engineers
 Transportation - Environmental
 Right of Way Services
 Office Locations:
 Manassas, VA
 Reston, VA
 Fairfax, VA
 Falls Church, VA
 Herndon, VA
 Leesville, VA
 Loudoun, VA
 Northern Virginia
 Potomac, MD
 Washington, DC

PROJECT MANAGER Wendy Block Sanford, City of Fairfax
 SURVEYED BY Rinker Design Assoc., P.C. (703) 368-7373
 DESIGN SUPERVISED BY Mark Gunn, P.E., Rinker Design Assoc., P.C. (703) 368-7373
 DESIGNED BY Adam D. Welschenbach, P.E., Rinker Design Assoc., P.C. (703) 368-7373



Rinker Design Associates, P.C.
 Manassas, Virginia
 PROFESSIONAL ENGINEER

Grading Plan

THIS SHEET IS FOR GRADING INFORMATION ONLY

REVISED	STATE	ROUTE	STATE	PROJECT	SHEET NO.
	VA.	-		0029-151-105 P101, P102, R201, C501	1615C1

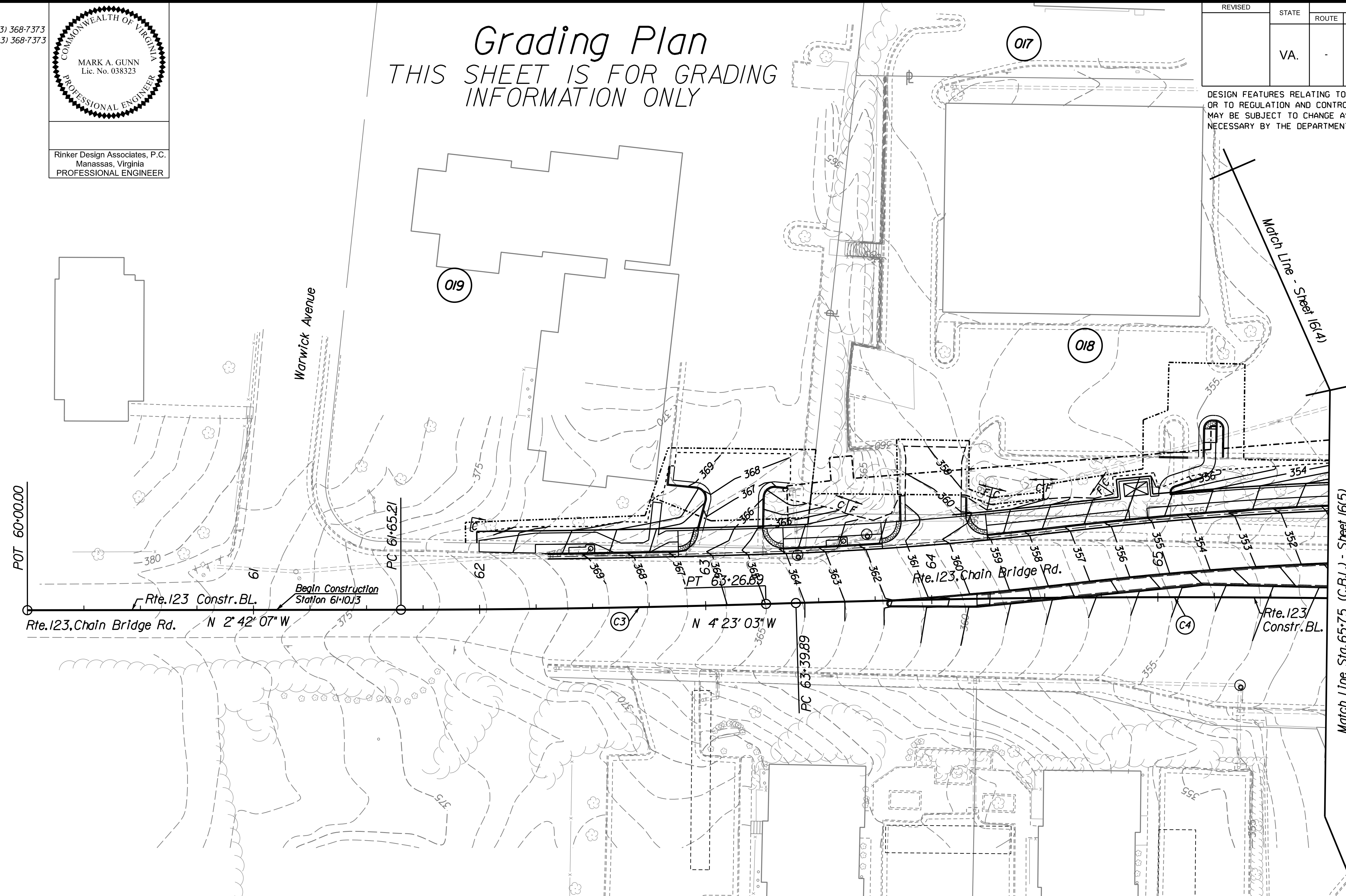
DESIGN FEATURES RELATING TO CONSTRUCTION OR TO REGULATION AND CONTROL OF TRAFFIC MAY BE SUBJECT TO CHANGE AS DEEMED NECESSARY BY THE DEPARTMENT

Office Locations
 Manassas, VA
 Falls Church, VA
 Fairfax, VA
 Herndon, VA
 Reston, VA
 Springfield, VA

Design Associates, P.C.
 Civil Engineers
 Transportation - Environmental
 Right of Way Services



Note:
 1. All side slope fills shall be benched in accordance with Section 303.4(h) of the VDOT Road and Bridge Specifications.
 2. See Geotechnical Engineering Report: Northfax Intersection and Drainage Improvements for slope stability recommendations.



<p>C3 Curve RTE12301 PI • 62+45.95 DELTA • 1° 40' 56.14" (LT) D • 1° 02' 30" T • 80.75' L • 161.49' R • 5,500.00' PC • 61+65.21 PT • 63+26.69 V • 30 MPH (Posted) E • -2.0% (U.L.S.)</p>	<p>C4 Curve RTE12302 PI • 65+17.94 DELTA • 3° 42' 30.21" (RT) D • 1° 02' 30" T • 178.05' L • 355.98' R • 5,500.00' PC • 63+39.89 PT • 66+95.87 V • 30 MPH (Posted) E • -2.0% (U.L.S.)</p>
--	---

C --- Denotes Construction Limits In Cut
F --- Denotes Construction Limits In Fill

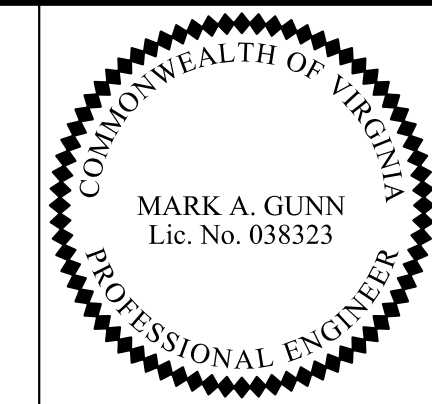
REFERENCES
 (PROFILES, DETAIL & DRAINAGE DESCRIPTION SHEETS, ETC.)
 Roadway Plan 5C

SCALE 0 25' 50'	PROJECT 0029-151-105	SHEET NO. 1615C1
--------------------	-------------------------	---------------------

PROJECT MANAGER Wendy Block Sanford, City of Fairfax (703) 385-7889
SURVEYED BY Rinker Design Assoc., P.C. (703) 368-7373 (2011)
DESIGNED BY Adam D. Welschenbach, P.E., Rinker Design Assoc., P.C. (703) 368-7373.
SUBSURFACE UTILITY PROVIDED BY AccuMark (2011)

Grading Plan

THIS SHEET IS FOR GRADING INFORMATION ONLY



Rinker Design Associates, P.C.
Manassas, Virginia
PROFESSIONAL ENGINEER

REVISED	STATE	ROUTE	PROJECT	SHEET NO.
	VA.	-	0029-151-105 P101, P102, R201, C501	16(5E)

DESIGN FEATURES RELATING TO CONSTRUCTION OR TO REGULATION AND CONTROL OF TRAFFIC MAY BE SUBJECT TO CHANGE AS DEEMED NECESSARY BY THE DEPARTMENT

(C6)
Curve RTE12304
PI • 75+27.82
DELTA • 3° 37' 50.05" (LT)
D • 0° 44' 26"
T • 245.18'
L • 490.19'
R • 7.736.00'
PC • 72+82.64
PT • 77+72.84
V • 30 MPH (Posted)
E • -2.0% (U.L.S.)

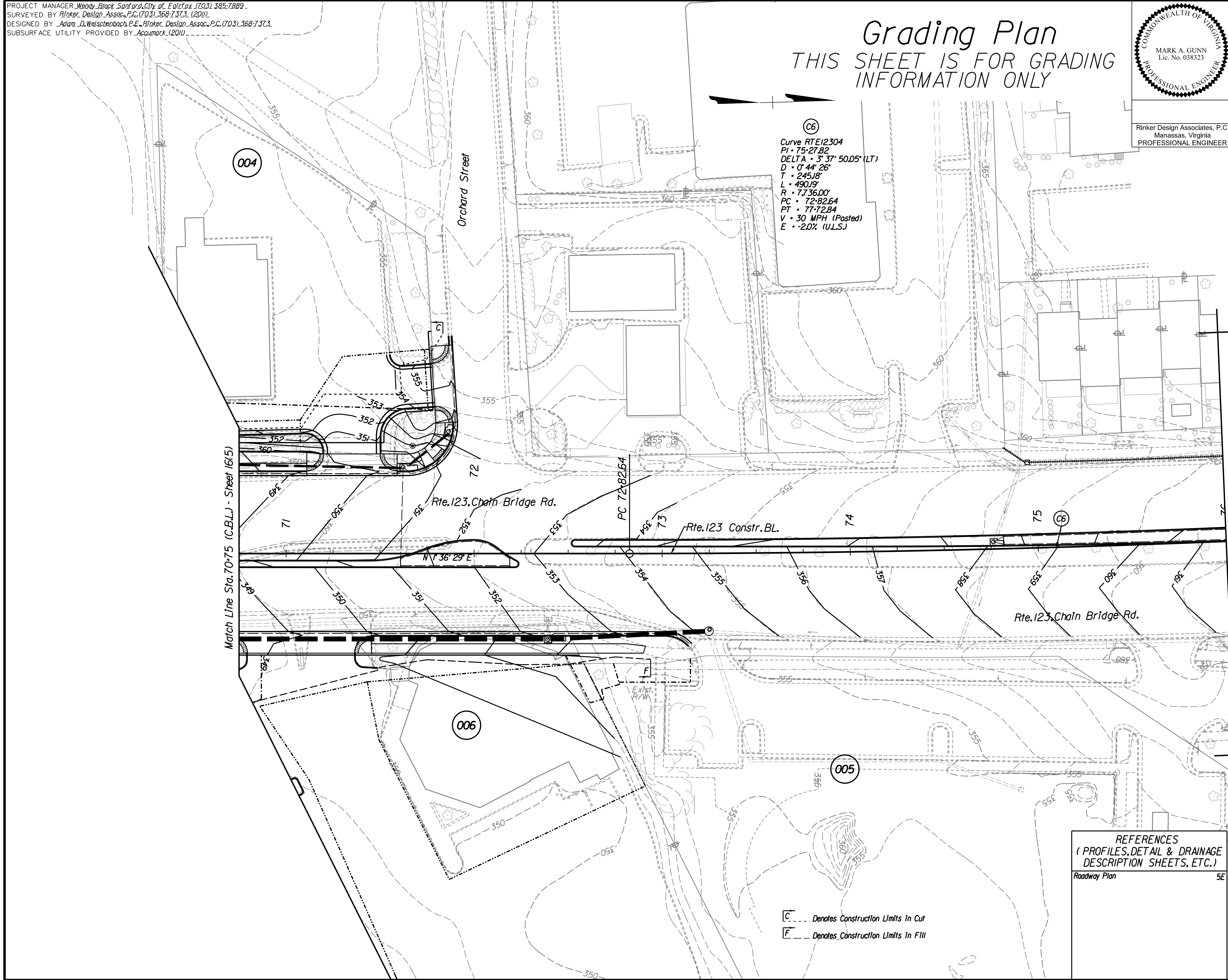
Office Locations
Manassas, VA
Falls Church, VA
Farmingdale, VA
Ferry Farm, VA
Ferry Farm, VA
Ferry Farm, VA

Design Associates, P.C.
Civil Engineering
Transportation
Right of Way Services



Match Line Sta. 70+75 (C.B.L.) - Sheet 16(5)

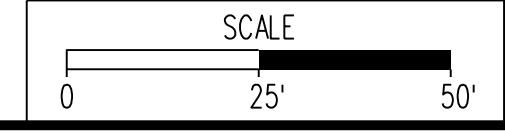
Match Line Sta. 76+00 (C.B.L.) - Sheet 16(5G)



REFERENCES
(PROFILES, DETAIL & DRAINAGE DESCRIPTION SHEETS, ETC.)
Roadway Plan 5E

Note:
1. All side slope fills shall be benched in accordance with Section 303.4(h) of the VDOT Road and Bridge Specifications.
2. See Geotechnical Engineering Report: Northfax Intersection and Drainage Improvements for slope stability recommendations.

C --- Denotes Construction Limits in Cut
F --- Denotes Construction Limits in Fill



PROJECT	SHEET NO.
0029-151-105	16(5E)

PROJECT MANAGER Wendy Block Sanford, City of Fairfax (703) 385-7889
 SURVEYED BY Rinker Design Assoc., P.C. (703) 368-7373 (2011)
 DESIGNED BY Adam D. Welschenbach, P.E., Rinker Design Assoc., P.C. (703) 368-7373
 SUBSURFACE UTILITY PROVIDED BY Accumark (2011)

Grading Plan

THIS SHEET IS FOR GRADING INFORMATION ONLY

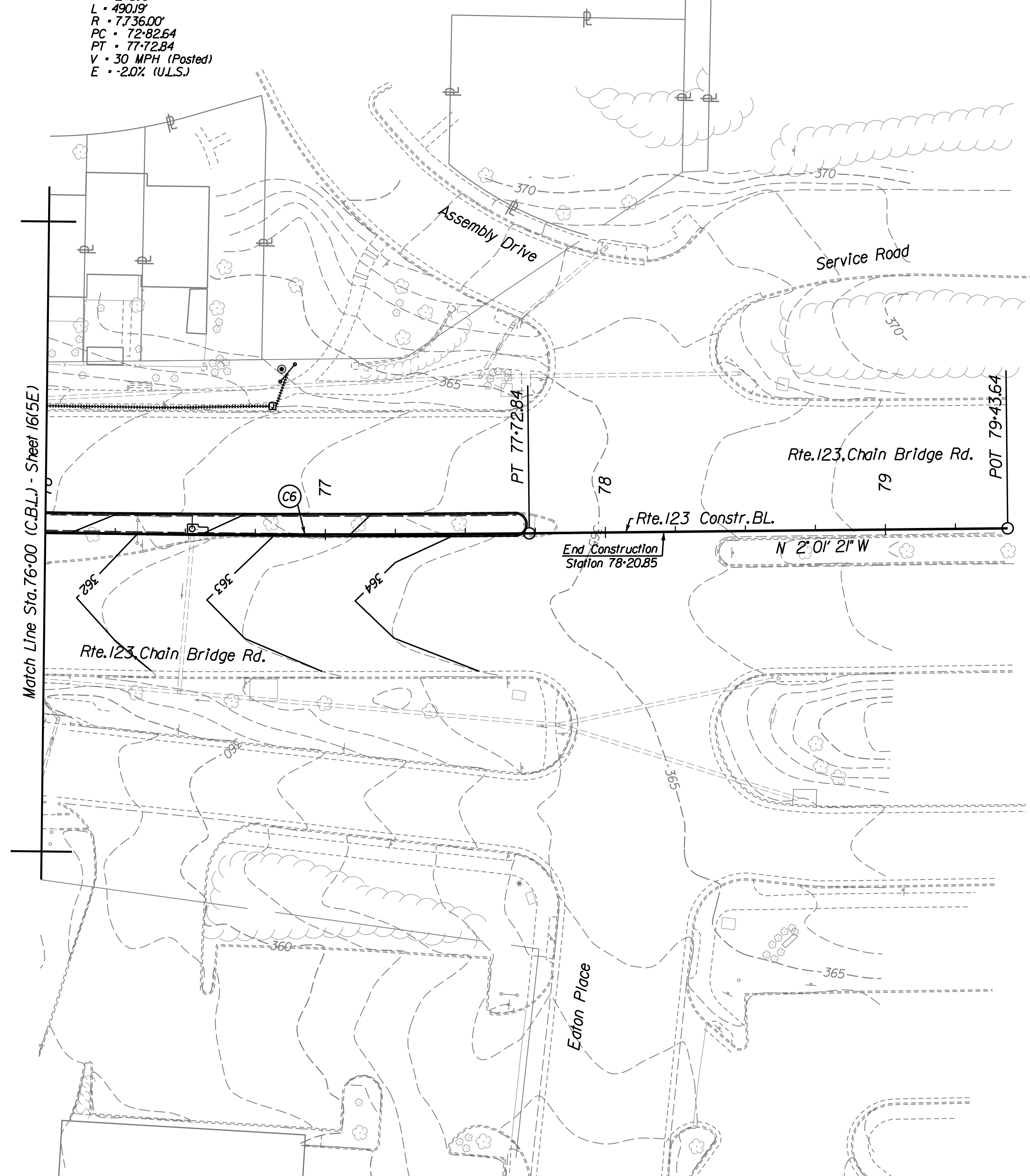
MARK A. GUNN
Lic. No. 038323
PROFESSIONAL ENGINEER

Rinker Design Associates, P.C.
Manassas, Virginia
PROFESSIONAL ENGINEER

REVISED	STATE	ROUTE	STATE PROJECT	SHEET NO.
	VA.	-	0029-151-105 P101, P102, R201, C501	16(56)

DESIGN FEATURES RELATING TO CONSTRUCTION OR TO REGULATION AND CONTROL OF TRAFFIC MAY BE SUBJECT TO CHANGE AS DEEMED NECESSARY BY THE DEPARTMENT

①
 Curve RTE12304
 PI = 75+27.82
 DELTA = 3° 37' 50.05" (LT)
 D = 0° 44' 26"
 T = 245.18'
 L = 490.19'
 R = 7736.00'
 PC = 72+82.64
 PT = 77+72.84
 V = 30 MPH (Posted)
 E = -2.0% (U.L.S.)



Note:
 1. All side slope fills shall be benched in accordance with Section 303.4(h) of the VDOT Road and Bridge Specifications.
 2. See Geotechnical Engineering Report: Northfax Intersection and Drainage Improvements for slope stability recommendations.

REFERENCES
 (PROFILES, DETAIL & DRAINAGE DESCRIPTION SHEETS, ETC.)
 Roadway Plan 56

⌈ --- Denotes Construction Limits In Cut
 ⌋ --- Denotes Construction Limits In Fill

SCALE 0 25' 50'	PROJECT 0029-151-105	SHEET NO. 16(56)
--------------------	-------------------------	---------------------

Rinker Design Associates, P.C.
 Civil Engineers, Surveyors, Environmental Planners, Transportation Engineers, Right of Way Services
 11000 Lee Highway, Suite 1000, Manassas, VA 20108
 Phone: (703) 368-7373
 Fax: (703) 368-7373
 www.rinker.com

PROJECT MANAGER Wendy Block Sanford, City of Fairfax (703) 385-7889
SURVEYED BY Rinker Design Assoc., P.C. (703) 368-7373 (2011)
DESIGNED BY Adam D. Welschenbach, P.E., Rinker Design Assoc., P.C. (703) 368-7373
SUBSURFACE UTILITY PROVIDED BY AccuMark (2011)

Grading Plan

THIS SHEET IS FOR GRADING INFORMATION ONLY

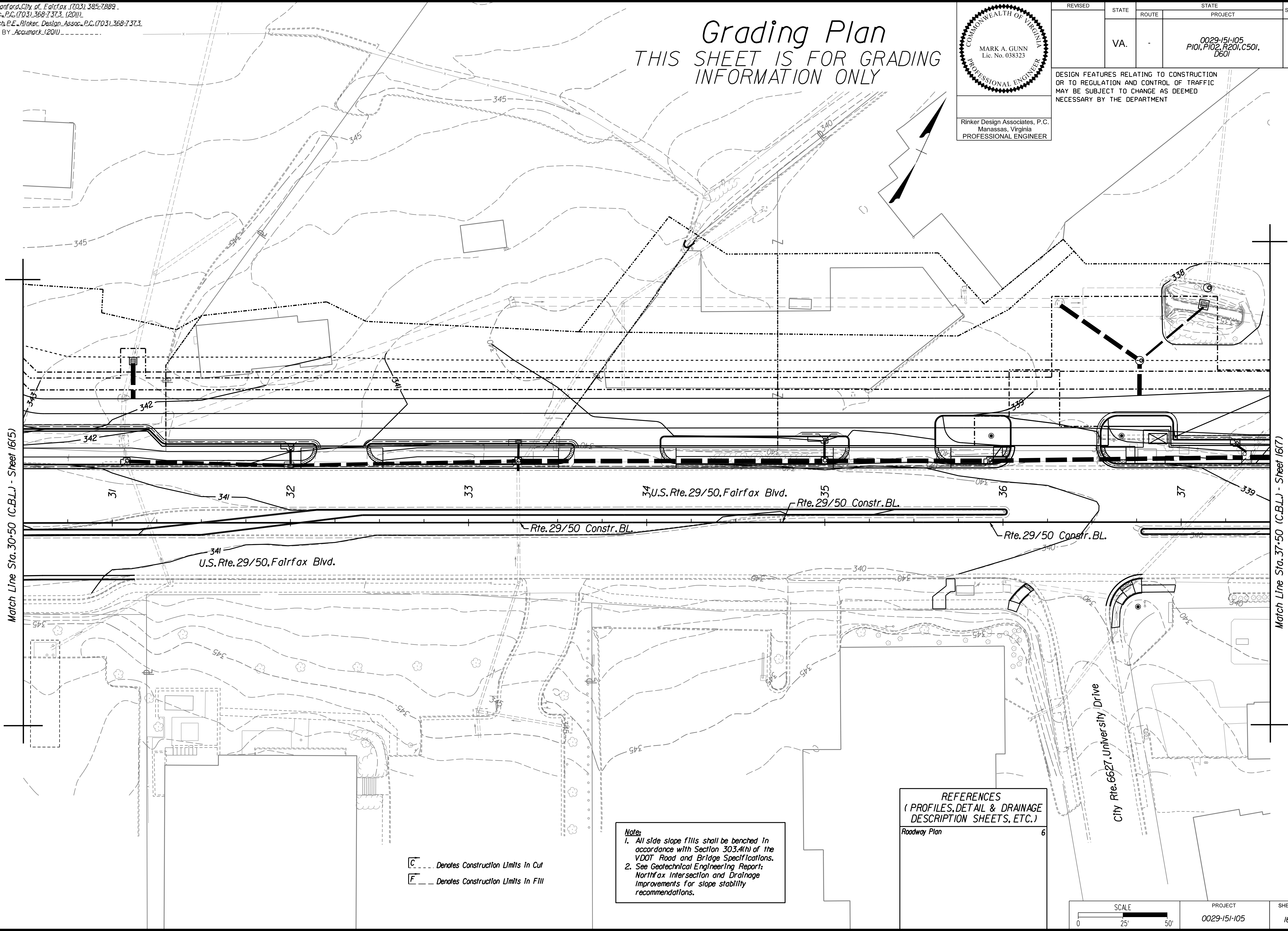


Rinker Design Associates, P.C.
Manassas, Virginia
PROFESSIONAL ENGINEER

REVISED	STATE	ROUTE	STATE	PROJECT	SHEET NO.
	VA.			0029-151-105 P101, P102, R201, C501, D601	16(6)

DESIGN FEATURES RELATING TO CONSTRUCTION OR TO REGULATION AND CONTROL OF TRAFFIC MAY BE SUBJECT TO CHANGE AS DEEMED NECESSARY BY THE DEPARTMENT

Rinker
Design Associates, P.C.
Civil Engineers, Surveyors, Environmental Planners, Transportation Engineers, Right-of-Way Services



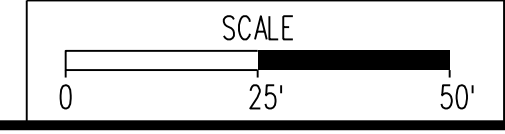
Match Line Sta. 30+50 (C.B.L.) - Street 16(5)

Match Line Sta. 37+50 (C.B.L.) - Street 16(7)

C --- Denotes Construction Limits In Cut
F --- Denotes Construction Limits In Fill

Note:
1. All side slope fills shall be benched in accordance with Section 303.4(h) of the VDOT Road and Bridge Specifications.
2. See Geotechnical Engineering Report: Northfax Intersection and Drainage Improvements for slope stability recommendations.

REFERENCES
(PROFILES, DETAIL & DRAINAGE DESCRIPTION SHEETS, ETC.)
Roadway Plan 6

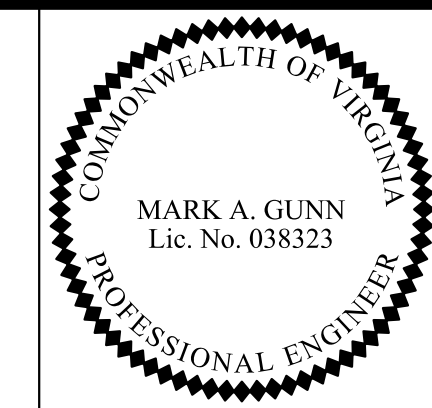


PROJECT	SHEET NO.
0029-151-105	16(6)

PROJECT MANAGER Wendy Block Sanford, City of Fairfax (703) 385-7889
SURVEYED BY Rinker Design Assoc., P.C. (703) 368-7373 (2011)
DESIGNED BY Adam D. Welschenbach, P.E., Rinker Design Assoc., P.C. (703) 368-7373
SUBSURFACE UTILITY PROVIDED BY AccuMark (2011)

Grading Plan

THIS SHEET IS FOR GRADING INFORMATION ONLY



Rinker Design Associates, P.C.
Manassas, Virginia
PROFESSIONAL ENGINEER

REVISED	STATE	ROUTE	PROJECT	SHEET NO.
	VA.	-	0029-151-105 P101, P102, R201, C501, D601	16(7)

DESIGN FEATURES RELATING TO CONSTRUCTION OR TO REGULATION AND CONTROL OF TRAFFIC MAY BE SUBJECT TO CHANGE AS DEEMED NECESSARY BY THE DEPARTMENT

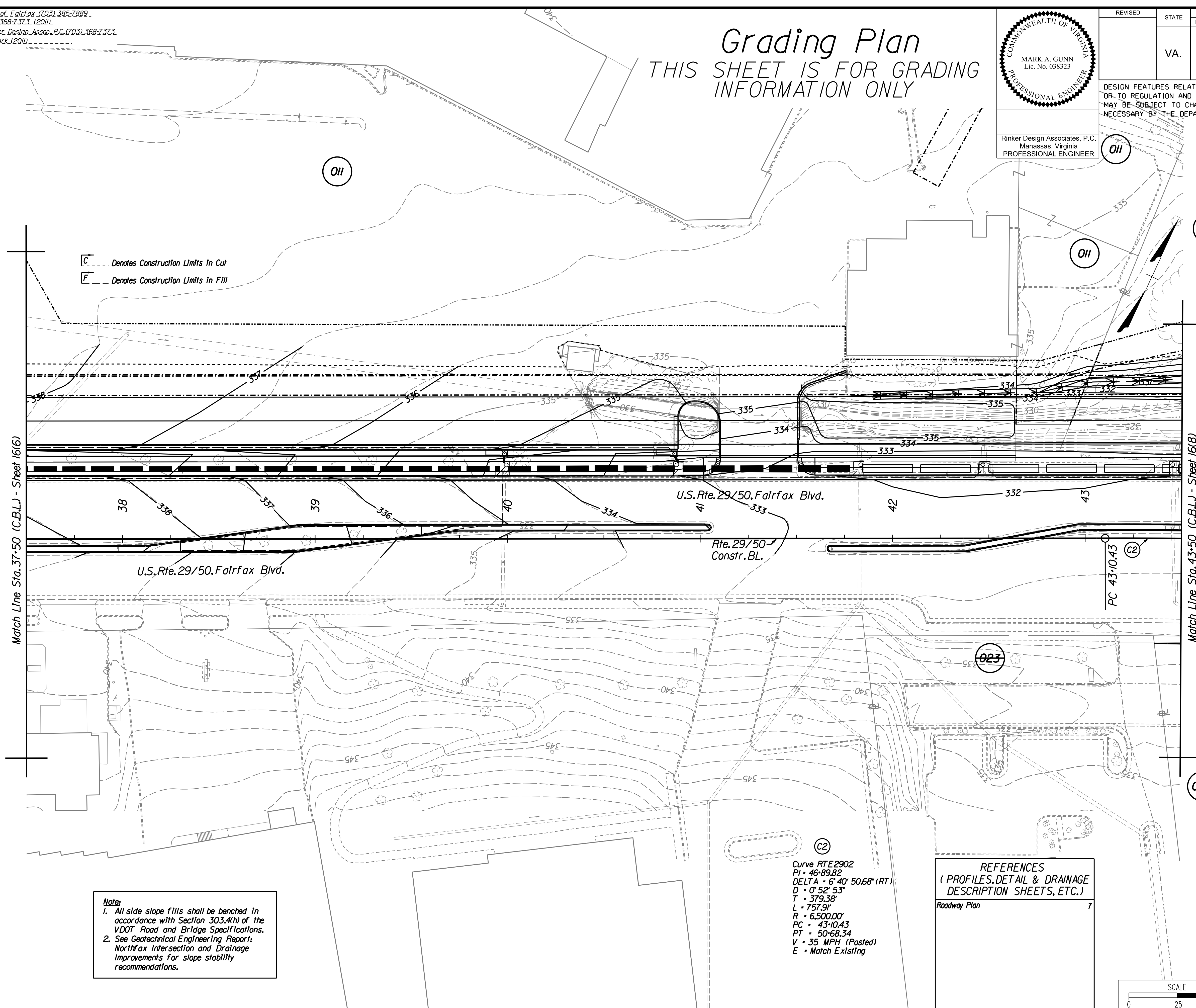
Office Locations
Manassas, VA
Falls Church, VA
Farmingdale, VA
Ferry Station, VA
Frying Pan, VA



C --- Denotes Construction Limits In Cut
F --- Denotes Construction Limits In Fill

Match Line Sta. 37+50 (C.B.L.) - Sheet 16(6)

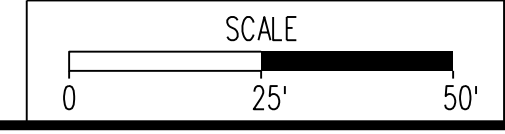
Match Line Sta. 43+50 (C.B.L.) - Sheet 16(8)



Note:
1. All side slope fills shall be benched in accordance with Section 303.4(h) of the VDOT Road and Bridge Specifications.
2. See Geotechnical Engineering Report: Northfax Intersection and Drainage Improvements for slope stability recommendations.

Curve RTE2902
PI • 46+89.82
DELTA • 6° 40' 50.68" (RT)
D • 0° 52' 53"
T • 379.38'
L • 757.91'
R • 6,500.00'
PC • 43+10.43
PT • 50+68.34
V • 35 MPH (Posted)
E • Match Existing

REFERENCES
(PROFILES, DETAIL & DRAINAGE DESCRIPTION SHEETS, ETC.)
Roadway Plan 7

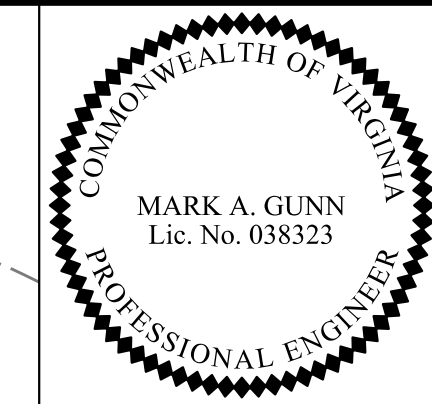


PROJECT	SHEET NO.
0029-151-105	16(7)

PROJECT MANAGER Wendy Block Sanford, City of Fairfax (703) 385-7889
SURVEYED BY Rinker Design Assoc., P.C. (703) 368-7373 (2011)
DESIGNED BY Adam D. Welschenbach, P.E., Rinker Design Assoc., P.C. (703) 368-7373
SUBSURFACE UTILITY PROVIDED BY AccuTrack (2011)

Grading Plan

THIS SHEET IS FOR GRADING INFORMATION ONLY



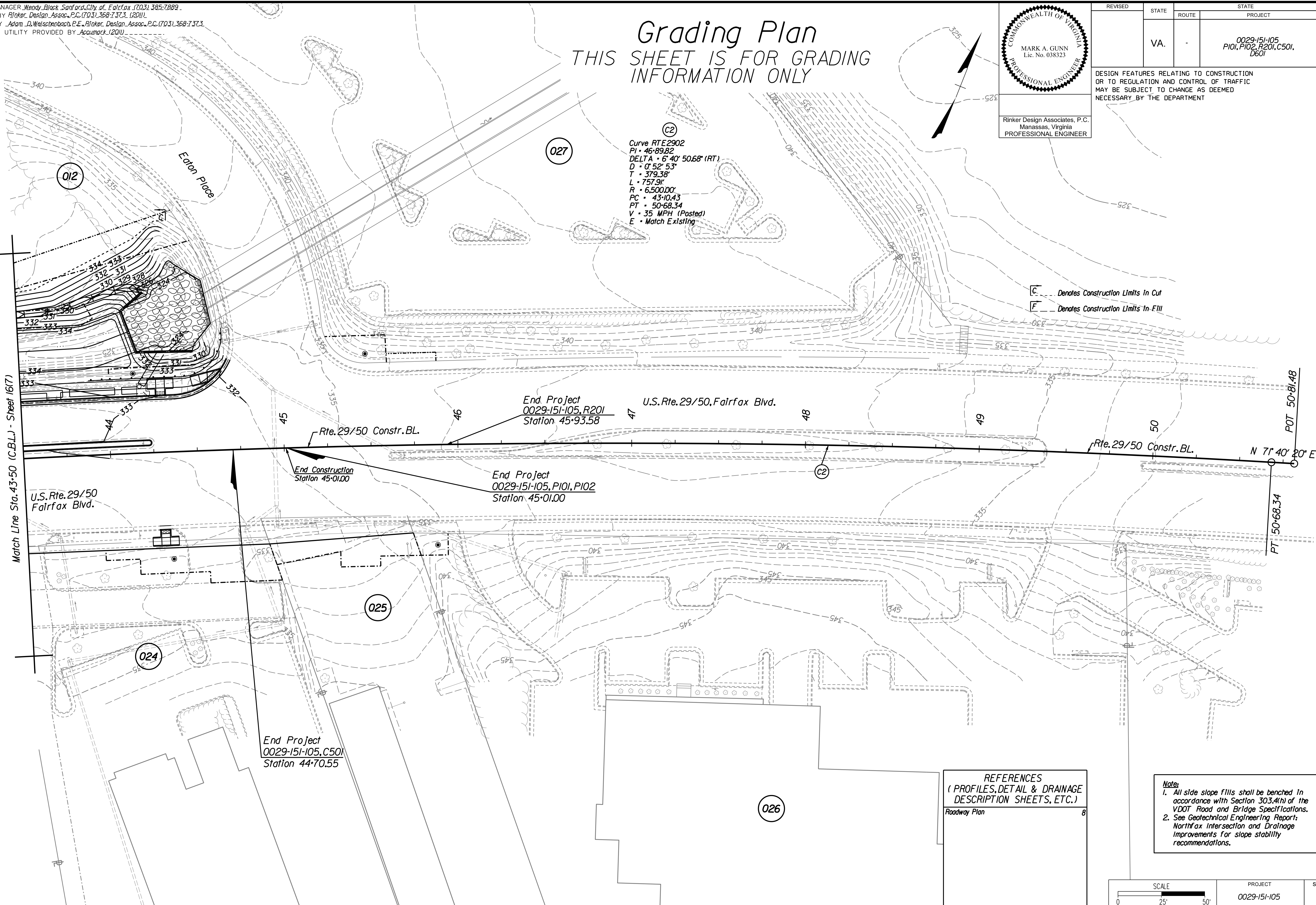
Rinker Design Associates, P.C.
Manassas, Virginia
PROFESSIONAL ENGINEER

REVISED	STATE	ROUTE	STATE PROJECT	SHEET NO.
	VA.	-	0029-151-105 P101, P102, R201, C501, D601	16(8)

DESIGN FEATURES RELATING TO CONSTRUCTION OR TO REGULATION AND CONTROL OF TRAFFIC MAY BE SUBJECT TO CHANGE AS DEEMED NECESSARY BY THE DEPARTMENT

C2
 Curve RTE2902
 PI • 46+89.82
 DELTA • 6° 40' 50.68" (RT)
 D • 0' 52' 53"
 T • 379.38'
 L • 757.91'
 R • 6,500.00'
 PC • 43+10.43
 PT • 50+68.34
 V • 35 MPH (Posted)
 E • Match Existing

C Denotes Construction Limits In Cut
F Denotes Construction Limits In Fill



Rinker Design Associates, P.C.
 Civil Engineers, Surveyors, Environmental Engineers, and Planners
 11000 Lee Highway, Suite 1000, Manassas, VA 20108
 Phone: (703) 368-7373
 Fax: (703) 368-7374
 www.rinker.com

REFERENCES
 (PROFILES, DETAIL & DRAINAGE DESCRIPTION SHEETS, ETC.)
 Roadway Plan 8

Notes:
 1. All side slope fills shall be benched in accordance with Section 303.4(h) of the VDOT Road and Bridge Specifications.
 2. See Geotechnical Engineering Report: Northfax Intersection and Drainage Improvements for slope stability recommendations.

SCALE	PROJECT	SHEET NO.
0 25' 50'	0029-151-105	16(8)