



Government Center Parkway Extension
(Stevenson Street to Jermantown Road)

Conceptual Plan & Estimate

City Council Work Session

September 18, 2015

Scope & Intent of Study

- Study Developed to Support Funding Application to VDOT
- Preliminary Traffic Analysis to Determine Effects of Constructing Gov. Center Pkwy Extension
- Preliminary Plan Development to Evaluate Impacts & Enable Project Estimate Preparation

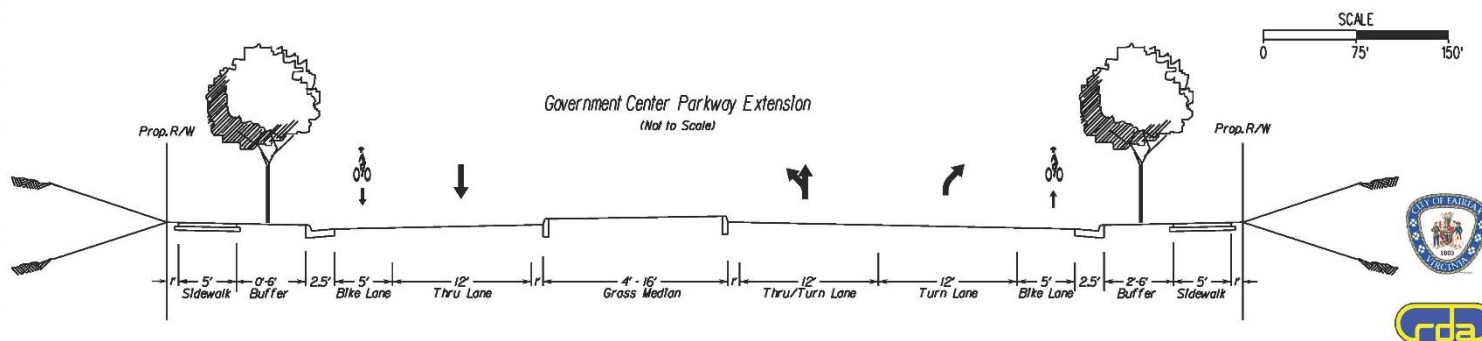
Project Location



Conceptual Design

Government Center Parkway Extension

September 2015



Project Description

■ Project Scope

- Construct “Missing Link” of Government Center Parkway from Stevenson Street to Jermantown Road
- Two Eastbound Thru Lanes to Provide Right and Left Turn Lanes to Jermantown Road
- One Westbound Thru Lane
- Turn Lanes to Stevenson Street and Shopping Center
- Sidewalk, Pedestrian Crossings, On-Road Bike Lanes, Lighting & Landscaping
- Retaining Wall Adjacent to McDonald’s Drive Thru
- Traffic Signal Reconstruction at Jermantown Road/Government Center Parkway

Project Description

- Project Impacts

- Majority of Project Contained Within Existing Right of Way
- 2 Impacted Properties (Shopping Centers to North & South)
 - Additional Right of Way & Easements Needed for Construction

Preliminary Traffic Analysis

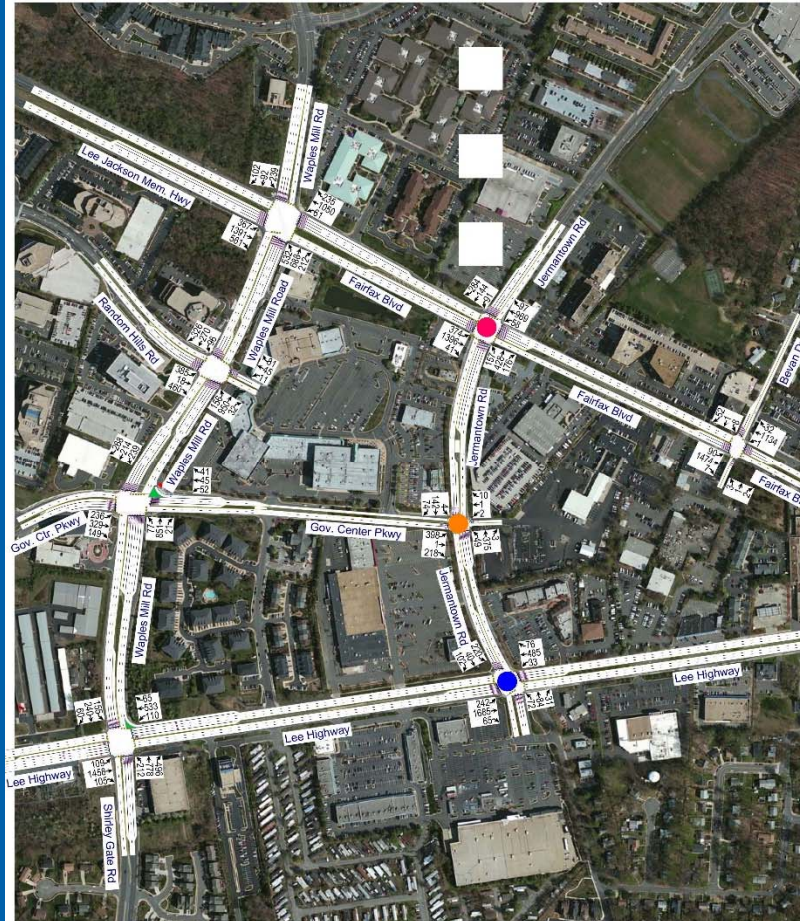
■ AM Travel Patterns

- Majority of traffic entering City uses Lee Highway & Fairfax Boulevard (originating west of Waples Mill)
- Majority of traffic from Random Hills Road and Gov. Center Parkway heads north (Waples Mill) or west (Route 50)
- Some existing traffic (approx. 200 vehicles) uses shopping center as cut-through in AM peak



Preliminary Traffic Analysis

- AM Operations
 - Minor Degradation of signal operations at Jermantown/Lee Highway
 - Increased congestion on Jermantown Road



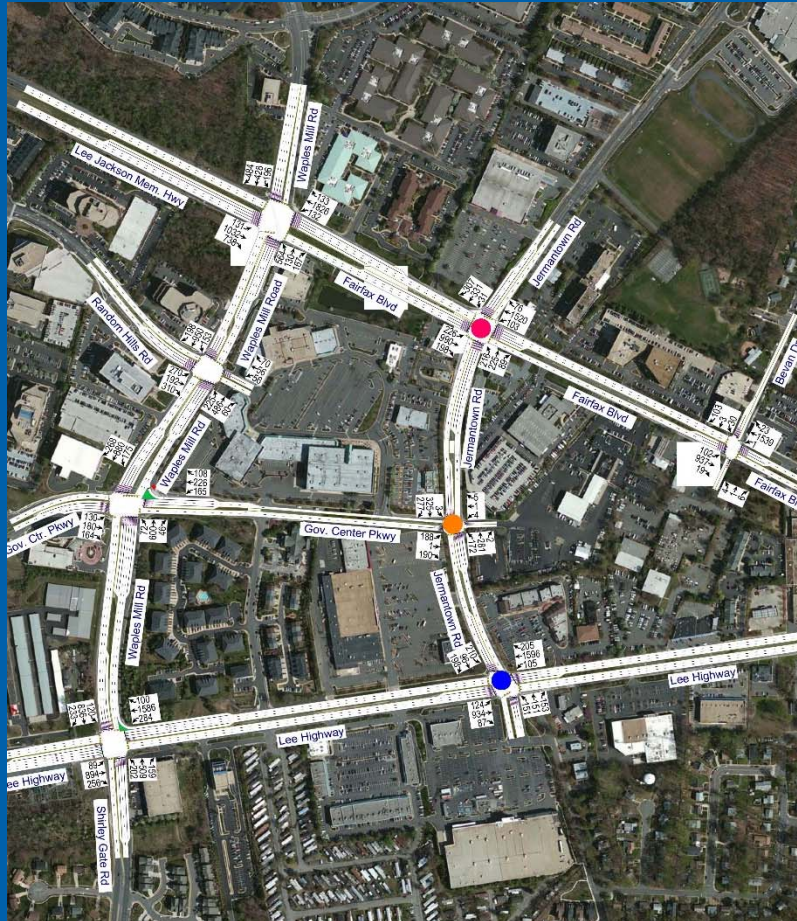
AM Peak Hour Level Of Service

- Intersection LOS with Existing Network = D
Intersection LOS with Future Network = D
- Intersection LOS with Existing Network = B
Intersection LOS with Future Network = C
- Intersection LOS with Existing Network = C
Intersection LOS with Future Network = D

In Urban Areas, "LOS D" is Acceptable For Peak Periods. (See AASHTO)

Preliminary Traffic Analysis

- PM Operations
 - Minor improvement to signal operations at Jermantown/ Lee Highway & Jermantown/ Fairfax Boulevard



PM Peak Hour Level of Service

- Intersection LOS with Existing Network = E
Intersection LOS with Future Network = D
- Intersection LOS with Existing Network = B
Intersection LOS with Future Network = B
- Intersection LOS with Existing Network = E
Intersection LOS with Future Network = D

In Urban Areas, "LOS D" is Acceptable For Peak Periods. (See AASHTO)

Project Description

■ Traffic Impacts

- Government Center Parkway Completes the Roadway Network “Grid” at the Western City Limit
- Provides Alternative Route for East-West Travel
- Minor Redistribution of Traffic Anticipated
- Additional Traffic via VDOT-Operated Intersection (Gov. Center Parkway/Waples Mill)
- Additional Congestion Anticipated on Jermantown Road Between Fairfax Boulevard & Lee Highway
- Traffic Signal Network Continues to Operate at Acceptable Levels

Project Cost Estimate

Preliminary Project Estimate:

Engineering (PE) :	\$300,000
R/W & Utilities (RW):	\$550,000
<u>Construction (CN):</u>	<u>\$2,300,000</u>
Project Total:	\$3,150,000

Questions & Comments

Questions & Comments