



Recommended Phase I Wastewater
Lateral Repair and Replacement Program
City Council Work Session
July 13, 2016

City of Fairfax
Department of Public Works

City Council Legislative Goal



“Build strong, safe, and secure neighborhoods, and improve residential quality of life through active community participation; improved connectivity through enhanced and inclusive communication; provide a safety net for those in need; well-funded renovation programs; a culture of shared accountability; and robust city services.”

Adopted by City Council on July 22, 2014

AGENDA

- A. Purpose of Work Session Item
- B. The Business Case
- C. The Recommended Phase I Program

A. Purpose of Work Session Item

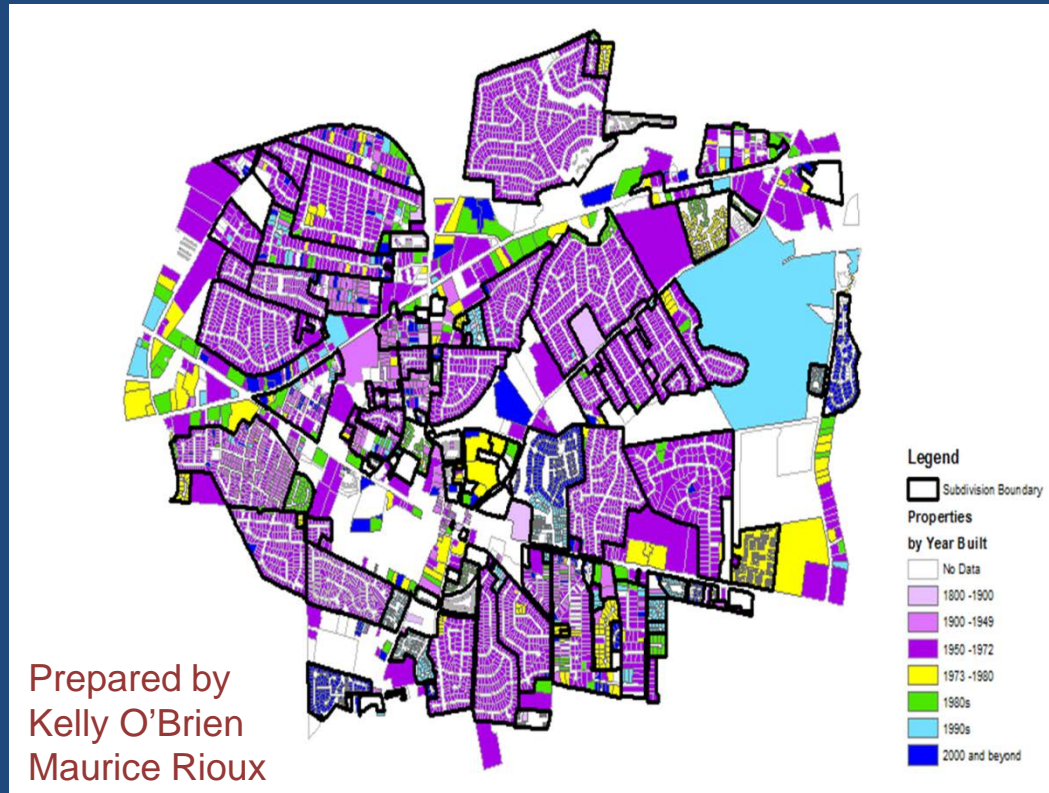
1. Understand the Business Case for a Phase I Program
2. Review the Recommended Reimbursement Alternatives for the Phase I and the Business Conditions
3. Provide approval for a Public Hearing

B. The Business Case



There are 76 million wastewater laterals in the United States and 56% have full responsibility to the main.

B. The Business Case



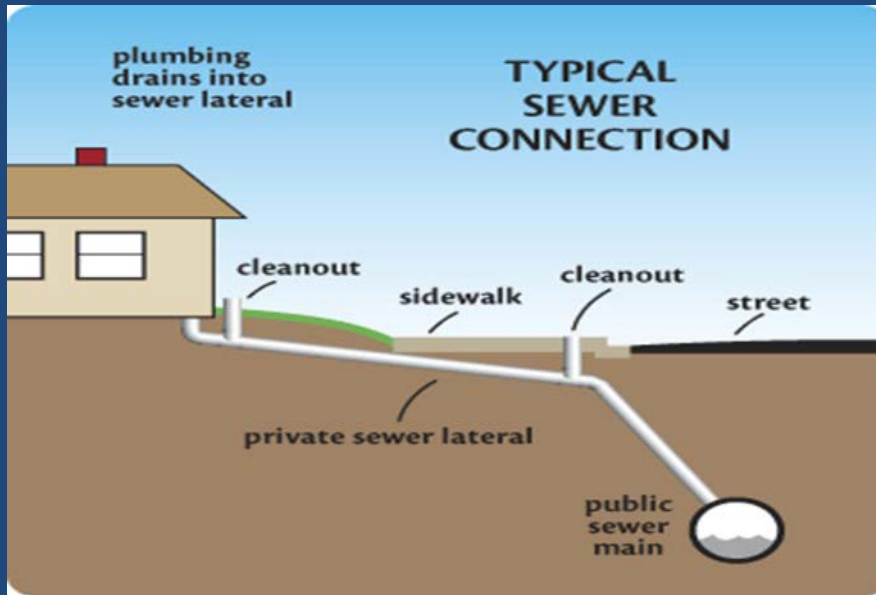
The majority of laterals in the City are aged and many of these were constructed using Orangeburg Pipe, a compressed composite manufactured until 1972.

B. The Business Case



The majority of laterals in the City were constructed using Orangeburg Pipe, a coal tar-impregnated wood fibre composite. Orangeburg Pipe is subject to cave-ins today.

B. The Business Case



Customers are responsible for their laterals all the way to the main.

In many cases wastewater mains are deep in the street.

Conventional excavation to repair or replace is very expensive.

Failures require immediate action.

B. The Business Case



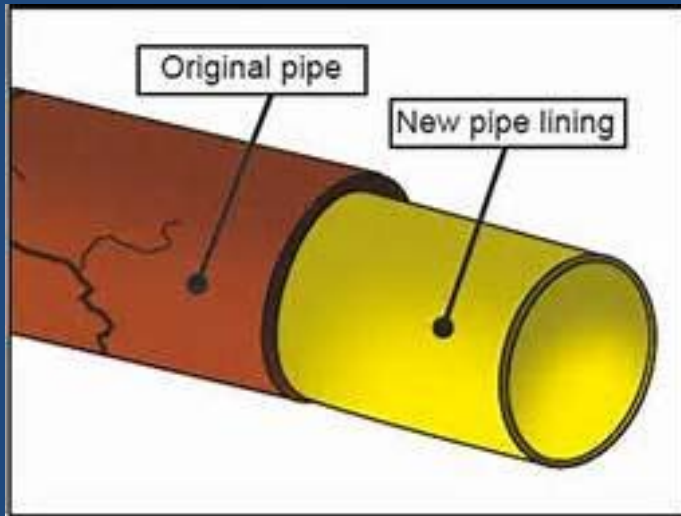
Private Insurance by Virginia Dominion Power or American Water are limited.

Once a pipe caves in only conventional methods can be utilized.

A preventive approach using modern cured-in-place pipe can be very cost effective.

The Phase 1 Program will encourage preventive replacements.

B. The Business Case



Cured-in-Place lining of laterals is proven new technology.

It is less expensive than open excavation.

It can save destruction of hardscape and landscape.

The Phase 1 Program will encourage this proactive investment.

C.The Recommended Phase I Program

MAJOR BUSINESS CONDITIONS

Phase I is a reimbursement program only.

Repairs do not include root or clog removal and must not be the result of property owner's abuse or fault.

Reimbursement for replacement is a one-time obligation of the City Wastewater Utility.

City will not be the Responsible Management Entity.

Participants must follow Program Requirements:

- Demonstrate the existing condition and Verify the Work.

- Provide at least two private contractor proposals or quotations.

- Obtain necessary City Permits.

City will provide Program Description to local Contractors, Applicants and post on web.

C.The Recommended Phase I Program

Reimbursement Allowances:

Condition	%City/ %Owner	Maximum Reimbursement
1. From the Main to the Building	100%	\$5,000
2. In the ROW Only	50%/50%	\$5,000
3. For Entire Length on Private Property Only	25%/75%	\$2,500

Note: Public Works Director will decide if extenuating circumstances warrant different reimbursement percentages on a case-by-case basis.

C.The Recommended Phase I Program

Wastewater Lateral Charge (new):

Customer	Fee	Payment Period
Residential; per lateral	\$4.50	Per Quarter
Commercial; per lateral	\$3.00	Per Month

Questions ?

Changes?

Course of Action ?